

# How to setup repeater mode on A1004

How to setup repeater mode on A1004?

It is suitable for: **A1004 A3**

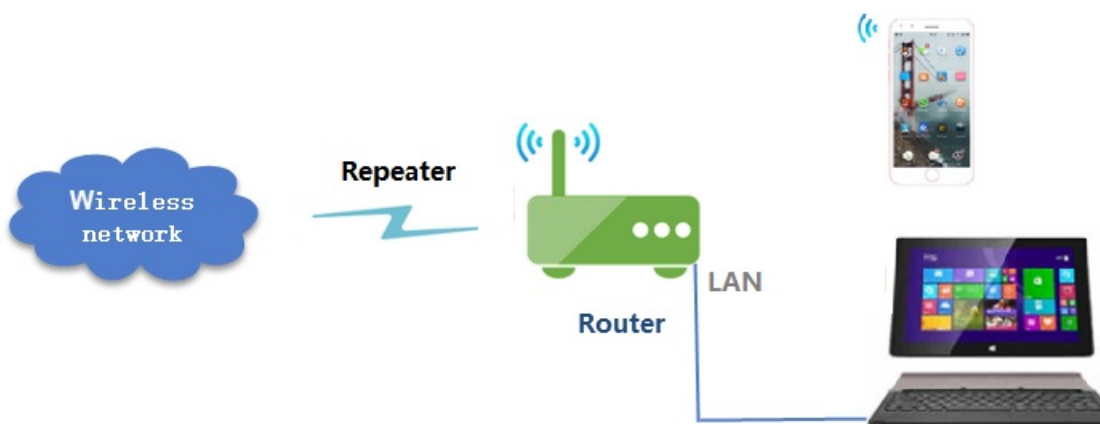
## Contents

- [1 Application introduction:](#)
- [2 Diagram](#)
- [3 Set up steps](#)
- [4 FAQ Common problem](#)
- [5 DOWNLOAD](#)
- [6 Related Posts](#)

## Application introduction:

Repeater mode expands the upper-level wireless signal by wireless to extend the wireless signal to a farther distance. Here is an example of A1004.

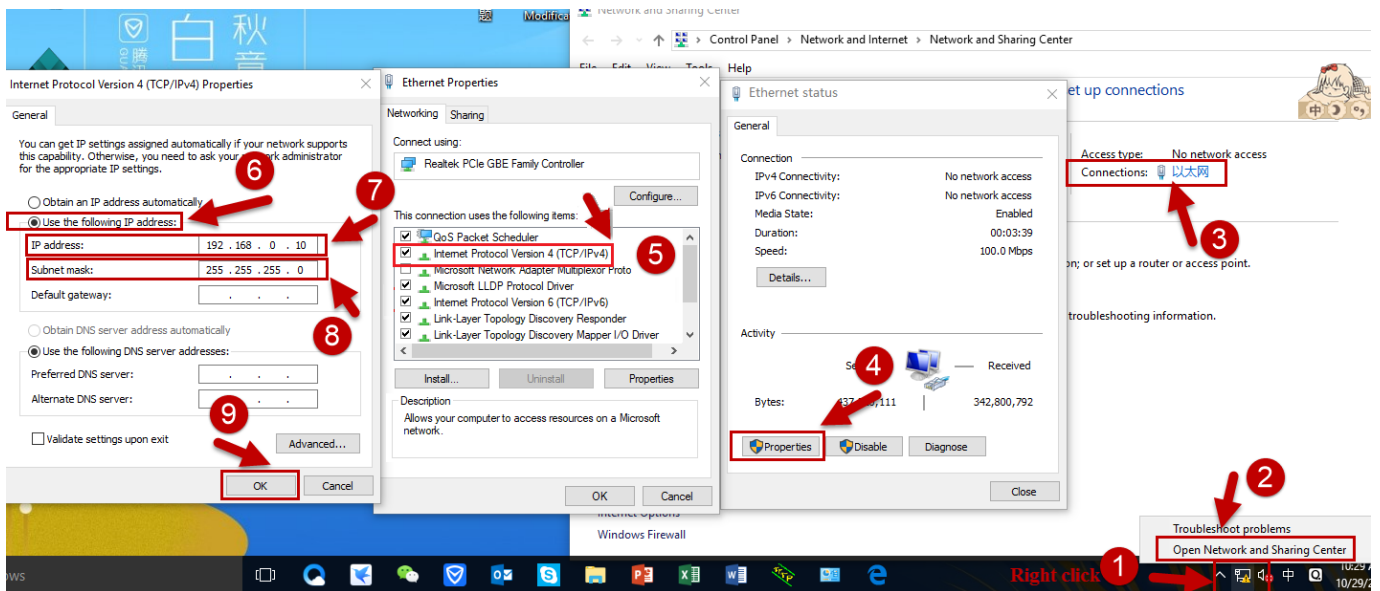
## Diagram



## Set up steps

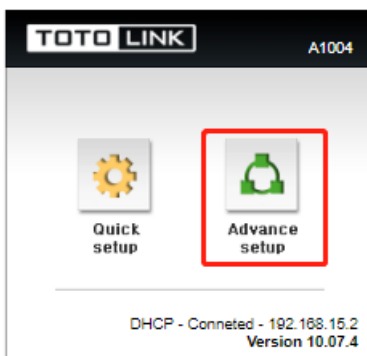
### STEP-1 Assigned manually IP address

A1004 LAN IP address is 192.168.0.1, please type in IP address 192.168.0.x "x" range from 2 to 254 , the Subnet Mask is 255.255.255.0 and Gateway is 192.168.0.1.



## STEP-2 Login to the management page

Open the browser, clear the address bar, enter **192.168.0.1** to the management page click **Advance setup**.



The repeater mode supports both 2.4G and 5G. Here's how to set up 2.4G first, then set 5G.

## STEP-3 2.4G repeater settings

### 3-1. 2.4GHz wireless setting

- ❶ Click Wireless Setup -> ❷ Select 2.4GH Basic network -> ❸ Set Wireless SSID -> ❹ Set Wireless Password -> ❺ Click Apply.

The Smartest Network Device  
A1004

Refresh
 Save

Config Explorer

- Basic Setup
  - Status Summary
  - Internet Setup
  - Wireless Setup
  - Firmware Upgrade
- Advanced Setup
  - Network
  - Wireless
    - Wireless Setup **1**
    - Wireless Multibridge
    - MAC Authentication
  - NAT/Routing
  - Firewall
  - Utility
  - Traffic
  - System

Wireless Setup

5 GHz Basic network
TOTOLINK\_A1004\_5G
on

2.4 GHz Basic network
TOTOLINK\_A1004 **2**
on

Select guest network ▼

2.4 GHz Default wireless network

Network SSID
TOTOLINK\_A1004 **3**

Channel
11 [ 2.462 GHz,UPPER ]
Channel Search

Auth
WPA2PSK + AES (Recommend) **4**

Password
\*\*\*\*\* **4**

2.4 GHz Wireless advance setup ▼

5 GHz WPS

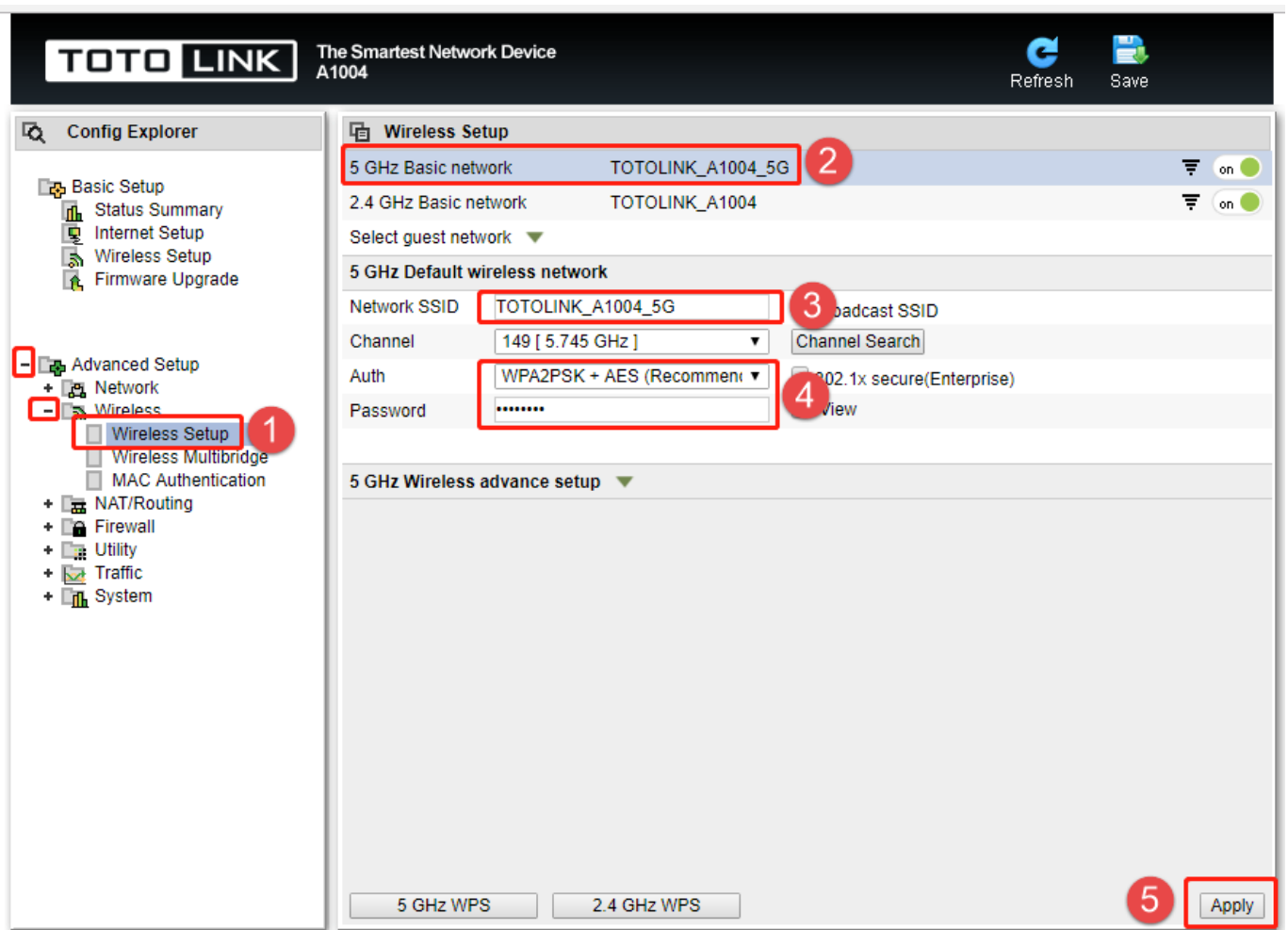
2.4 GHz WPS

**5** **Apply**

### 3-2. 2.4 GHz extension setting

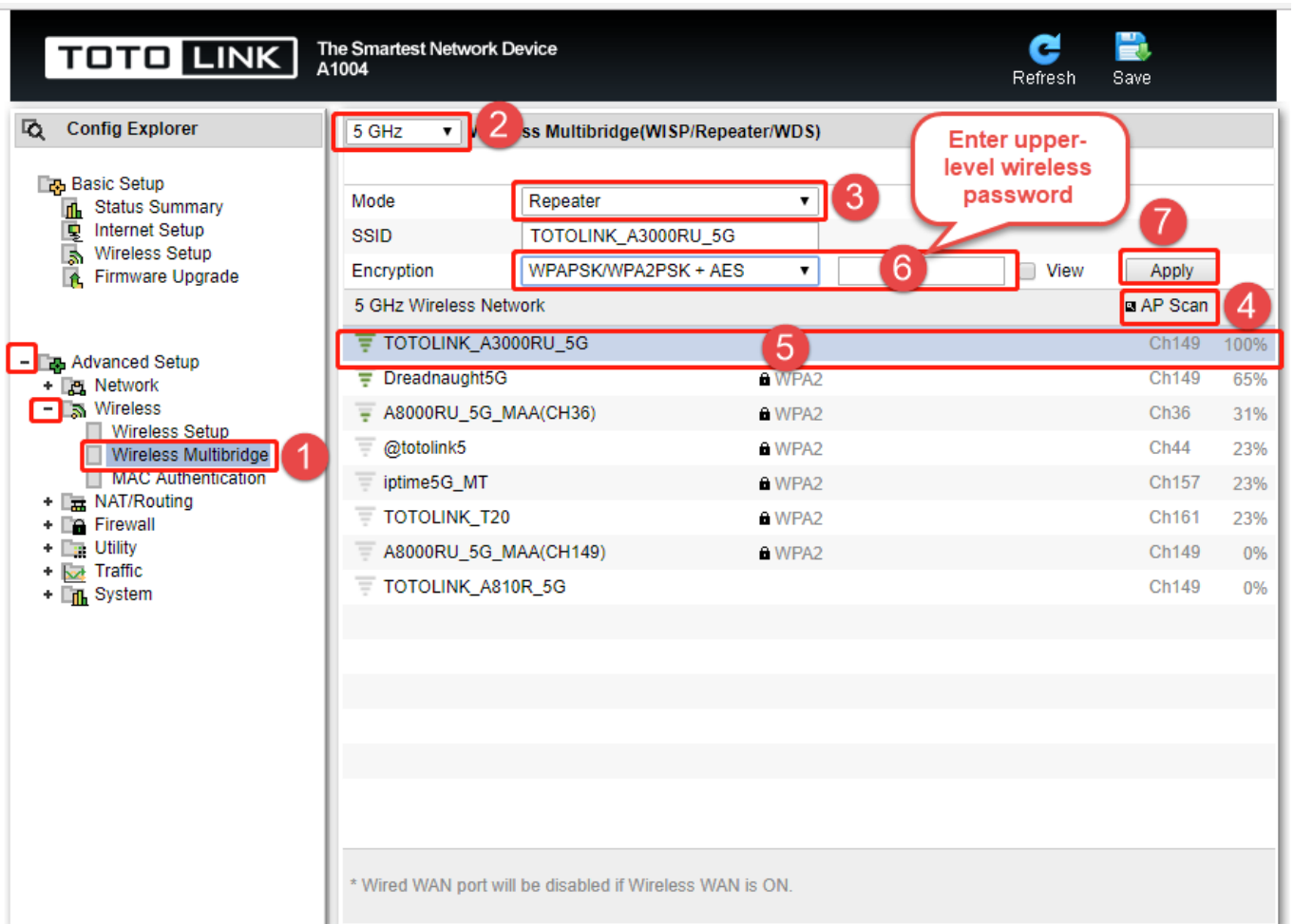
❶ Click Wireless Multibridge -> ❷ Select 2.4GHz -> ❸ Select Repeater -> ❹ Click AP Scan -> ❺ Select the wireless you need to expand -> ❻ Enter the upper-level wireless password, and finally ❼ click Apply.





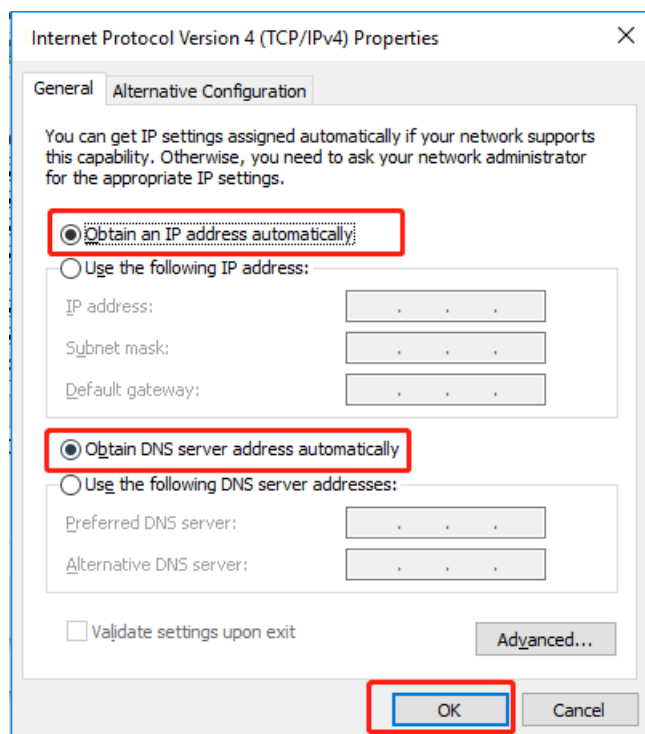
#### 4-2. 5GHz extension setting

① Click Wireless Multibridge -> ② Select 5GHz -> ③ Select Repeater -> ④ Click AP Scan -> ⑤ Select the wireless you need to expand -> ⑥ Enter the upper-level wireless password, and finally ⑦ click Apply.



## STEP-5

After the setting is successful, please obtain the IP setting automatically, and the computer can connect to the network.



## STEP-6

Now all Wi-Fi enabled devices can connect to a custom wireless network.

## FAQ Common problem

**Q1: After the bridge mode is set successfully, you will not be able to access the router. If you need to revisit, there are two ways!**

1. Press the reset button/hole on the router to restore the router to factory settings;
2. Log in to the router management page by setting a fixed IP (refer to STEP-1).

---

## DOWNLOAD

How to setup repeater mode on A1004 – [[Download PDF](#)]

---