

How to set up Port Forwarding on New User Interface

Contents

- [1 How to set up Port Forwarding on New User Interface?](#)
- [2 Set up steps](#)
- [3 DOWNLOAD](#)
- [4 Related Posts](#)

How to set up Port Forwarding on New User Interface?

It is suitable for: **N100RE**, **N150RT** , **N200RE**, **N210RE**, **N300RT**, **N302R Plus**, **A3002RU**

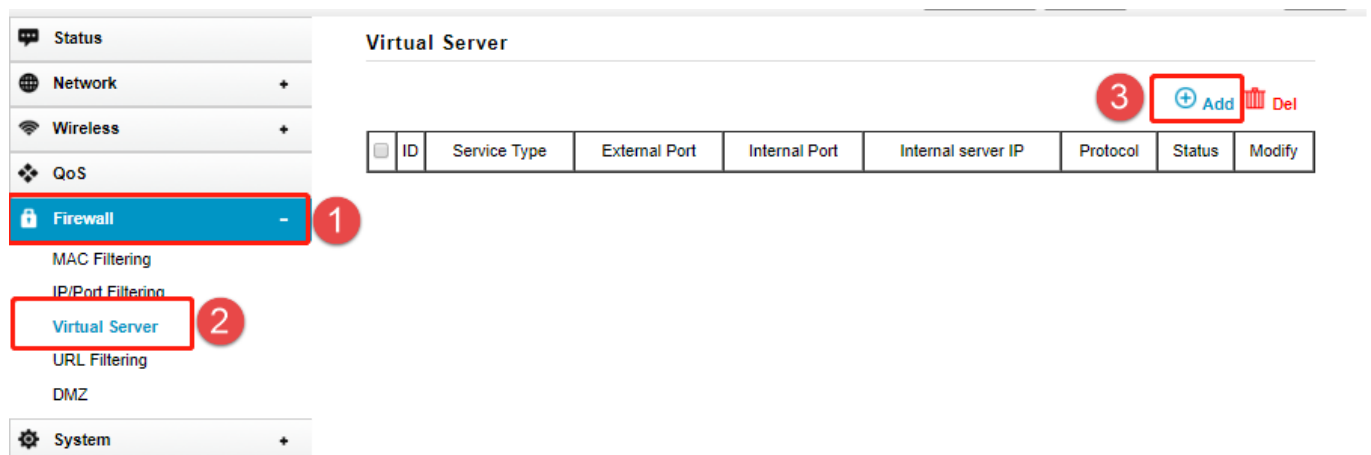
Application introduction:

By port forwarding, the data for Internet applications can pass through the firewall of the router or gateway. This article will show you how to forward ports on your router, take N100RE as an example.

Set up steps

STEP-1:

In the left menu of the web interface, click **Firewall ->Virtual Server ->Add**.



STEP-2:

Choose the Rule Type from the drop-down list, and then fill in the blank as below, and then click **Apply**.

–Service Type: Click **View Existing Services**

–External Port: Port to access the server

–Internal Port: Actual port of the server

–Protocol: IP address of the server

–Service Type: Selectable by TCP, UDP, ALL

The screenshot shows a configuration window for port forwarding. It includes fields for Service Type, External Port, Internal Port, Protocol, and Service Type. A 'View Existing Services' button is next to the Service Type field. The Protocol field is set to '192.168.0.' and '(2-253)'. The Service Type dropdown is set to 'TCP'. At the bottom are 'Cancel' and 'Apply' buttons. Red boxes and numbers 1 through 6 highlight specific elements: 1 points to the 'View Existing Services' button, 2 points to the External Port field, 3 points to the Internal Port field, 4 points to the Protocol field, 5 points to the Service Type dropdown, and 6 points to the 'Apply' button.

STEP-3:

Ensure that the port successfully added to the Current Port Forwarding List.

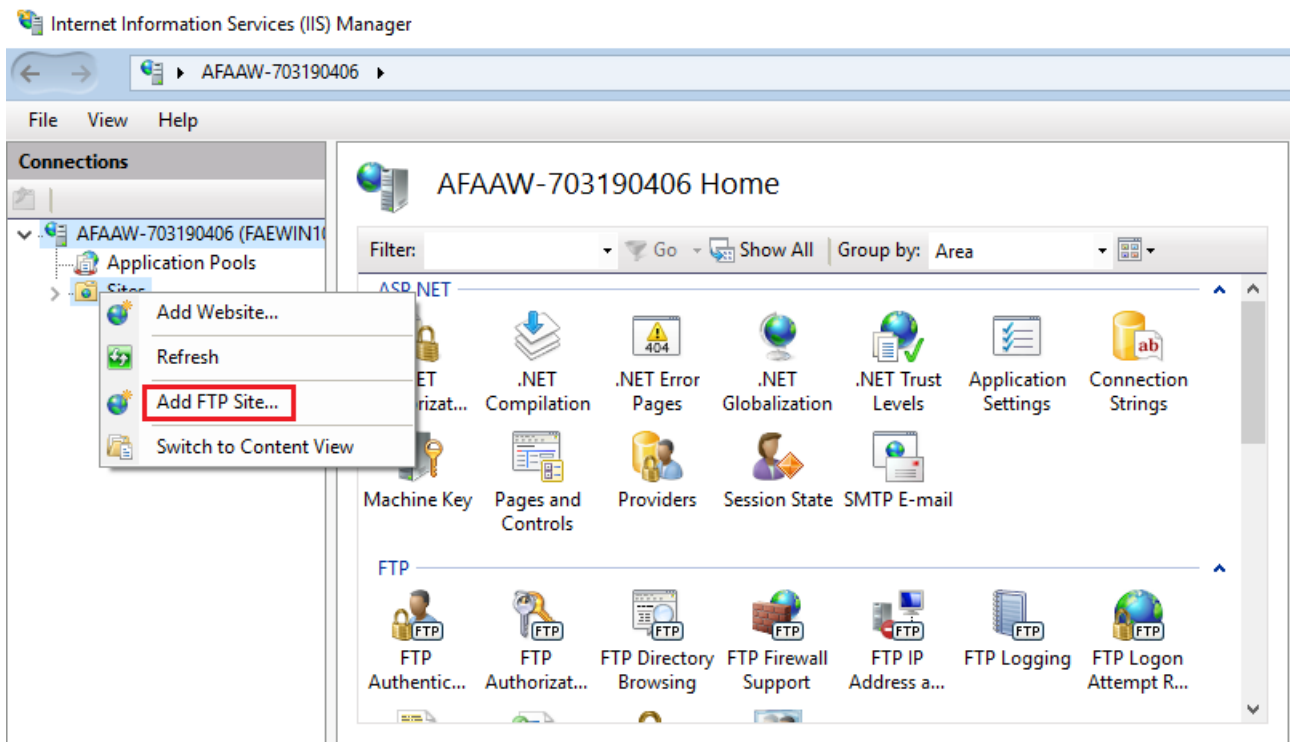
Virtual Server								
<div><input type="checkbox"/></div> <div>+ Add Del</div>								
<input type="checkbox"/>	ID	Service Type	External Port	Internal Port	Internal server IP	Protocol	Status	Modify
<input type="checkbox"/>	1	FTP	21	21	192.168.0.242	TCP		

< 1 >

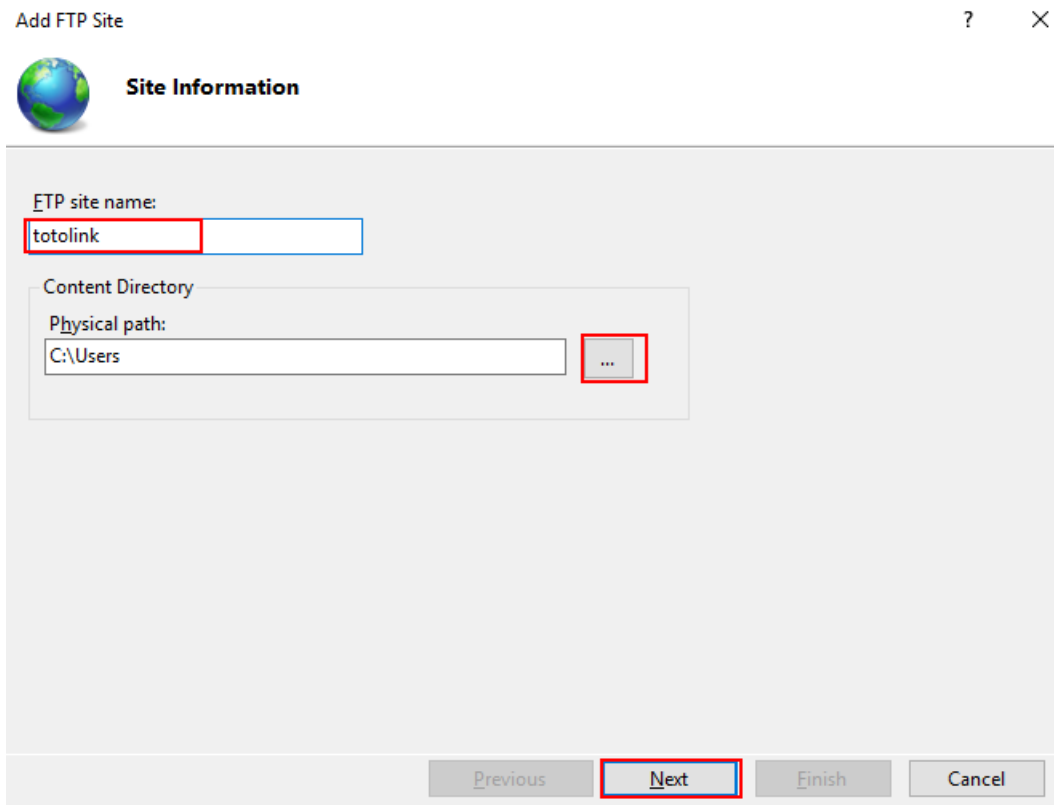
The router's port forwarding settings are complete

Here with FTP server as an example (WIN10), check that the port forwarding is successfully.

1. Open the **Control Panel\All Control Panel Items\Administrative Tools\Add FTP Server**



2. Input the ftp site name, Select the path; Click next



3. Select the target PC address Sets the port, Click Next;

**Binding and SSL Settings**

Binding

IP Address: Port:

Virtual Host (example: ftp.contoso.com):

☒ Start FTP site automatically

SSL

☒ No SSL

☐ Allow SSL

☐ Require SSL

SSL Certificate:

4. Define users and permissions, Click Finish.

**Authentication and Authorization Information**

Authentication

☒ Anonymous

☒ Basic

Authorization

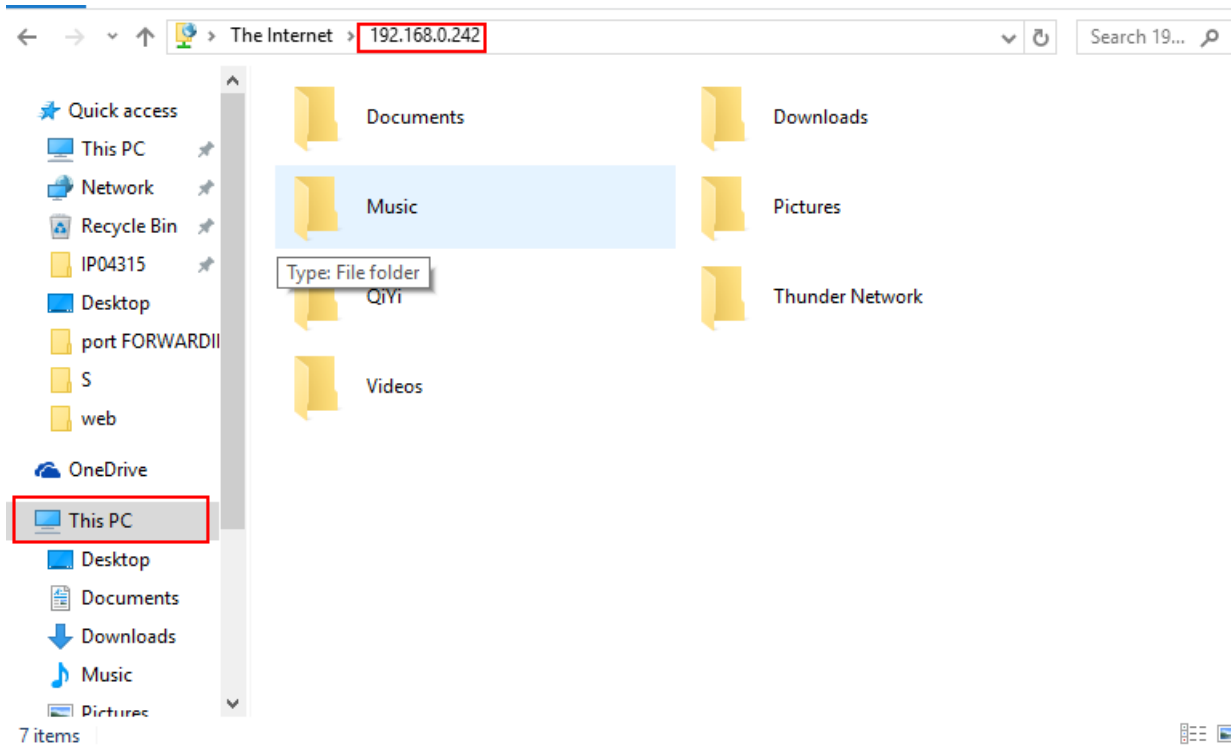
Allow access to:

Permissions

☒ Read

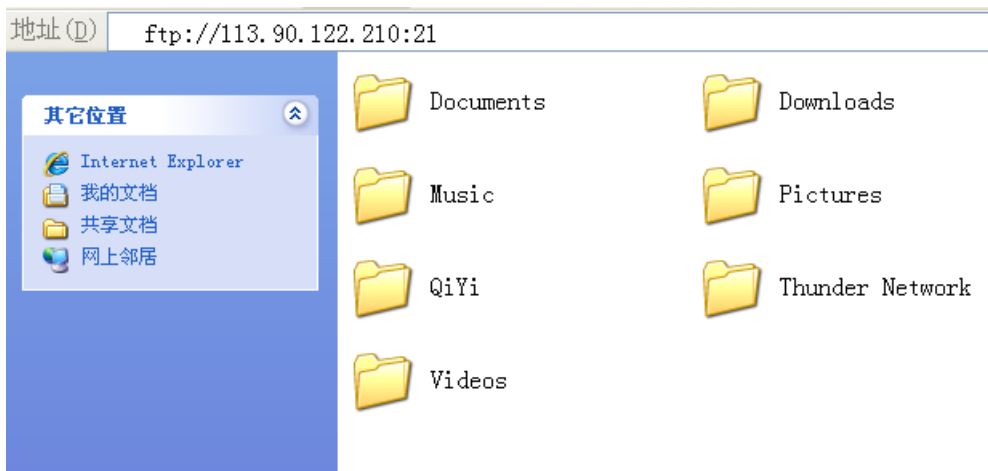
☒ Write

5. Now, you can access FTP over a LAN, Login Address: <ftp://192.168.0.242;>



6. Check ROUTER WAN IP, in the public network use it to log into the FTP Server;

E. g <ftp://113.90.122.205:21>;



Normal visit, verify that the port forwarding OK

DOWNLOAD

How to set up Port Forwarding on New User Interface – [[Download PDF](#)]
