

How to Set DDNS Function on TOTOLINK Router

Contents

- [1 How to Set DDNS Function on TOTOLINK Router?](#)
- [2 Related Posts](#)

How to Set DDNS Function on TOTOLINK Router?

It is suitable for: **X6000R X5000R A3300R A720R N350RT N200RE_V5 T6 T8 X18 X30 X60**

Background Introduction:

The purpose of setting up DDNS is: under broadband dial-up internet access, the WAN port IP usually changes after 24 hours.

When the IP changes, it cannot be accessed through the previous IP address.

Therefore, setting up DDNS involves binding the WAN port IP through a domain name.

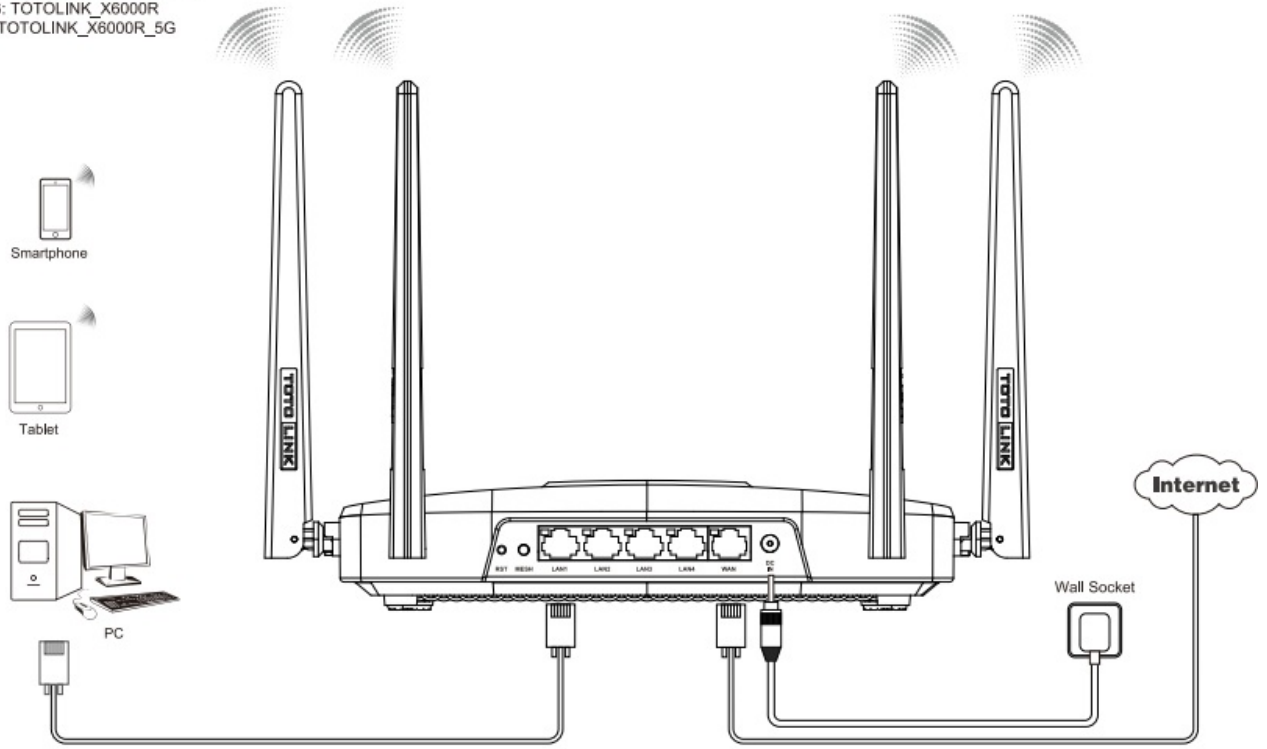
When the IP changes, it can be accessed directly through the domain name.

Set up steps

STEP 1:

Follow the steps below to connect your router.

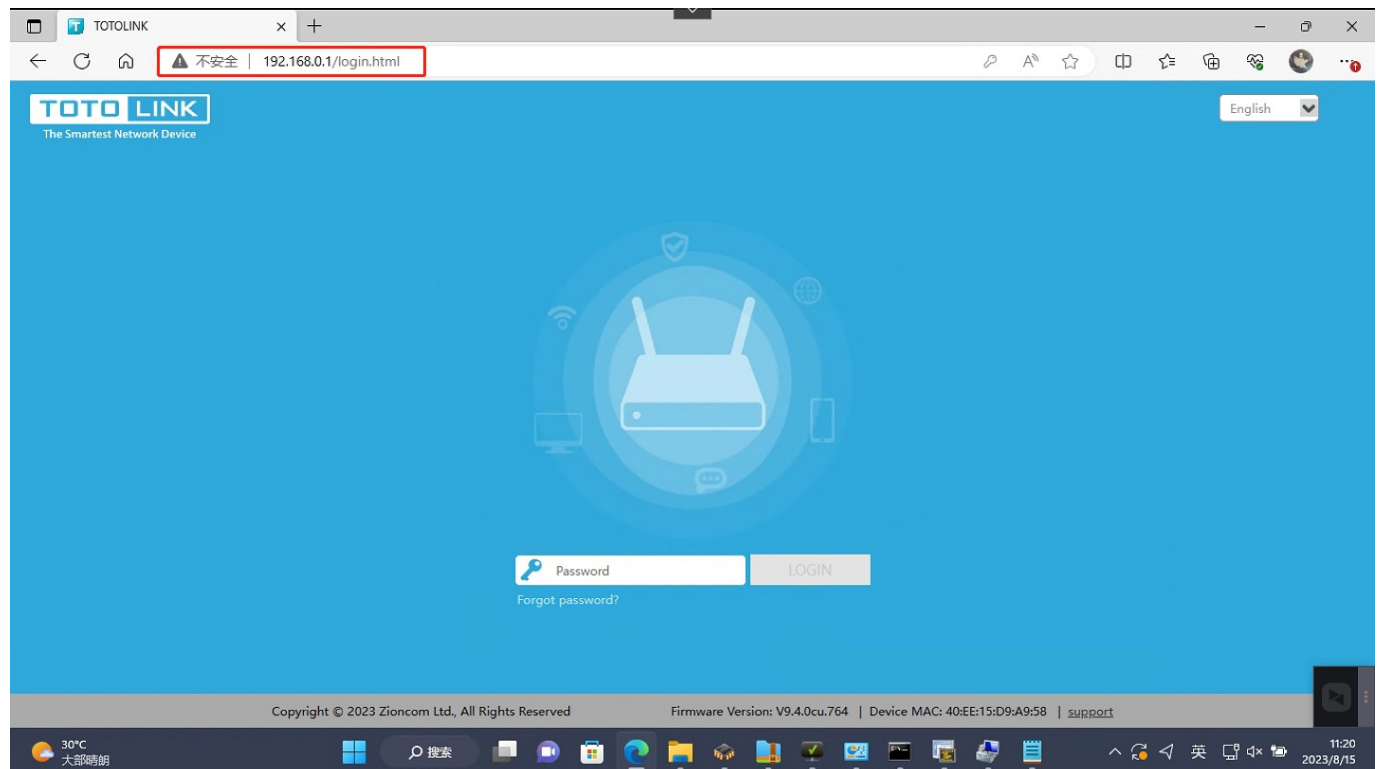
(1) Default Wi-Fi Name (SSIDs):
2.4G: TOTOLINK_X6000R
5G: TOTOLINK_X6000R_5G



STEP 2 :

Connect the computer to the router WiFi and enter “192.168.0.1” in the PC browser to log in to the web management interface.

The default login password is: admin



STEP 3 :

Set the network connection type to PPPoE, this step is to enable the router to obtain a public IP address

TOTO LINK
The Smartest Network Device

EasyMesh Basic Advanced Operation Mode

LED Logout Reboot English

Internet Settings

Connection Type: **PPPoE** [Auto Detect](#)

Connection Status: **Connected** [Connect](#) [Disconnect](#)

User Name: sz...

Password:

Server Name:

AC Name:

MTU: 1492 (range:576~1492)

LCP echo Enabled: ☒

TTL Way: ☒

DNS Mode: [Attain DNS automatically](#)

☒ Use default MAC address
☐ Clone PC's MAC address

MAC Address: 40:EE:15:D9:A9:59

[Apply](#)

Copyright © 2023 Zioncom Ltd., All Rights Reserved | Firmware Version: V9.4.0cu.764 | Device MAC: 40:EE:15:D9:A9:58 | [support](#)

TOTO LINK
The Smartest Network Device

EasyMesh Basic Advanced Operation Mode

LED Logout Reboot English

Connection Status: PPPoE/Connected (113.116.227.192) [Connect](#) [Disconnect](#)

Online Time: 0 d, 0 h, 21 m, 41 s

public ip address

X6000R

LAN1 LAN2 LAN3 LAN4 WAN

System Status

Firmware Version:	V9.4.0cu.764	MAC Address:	40:EE:15:D9:A9:58
Up Time:	12 d, 19 h, 19 m, 58 s	Build Time:	2023-6-7 18:8:3
S N:	X6000RKGHD4SQ	Working Mode:	Gateway Mode
Radio On/Off 2.4G :	Off	Radio On/Off 5G :	On
Network name(SSID) :	499-2.4g	Network name(SSID) :	499-5g
Encryption :	WPA/WPA2-PSK	Encryption :	WPA/WPA2-PSK
Password :	Password :

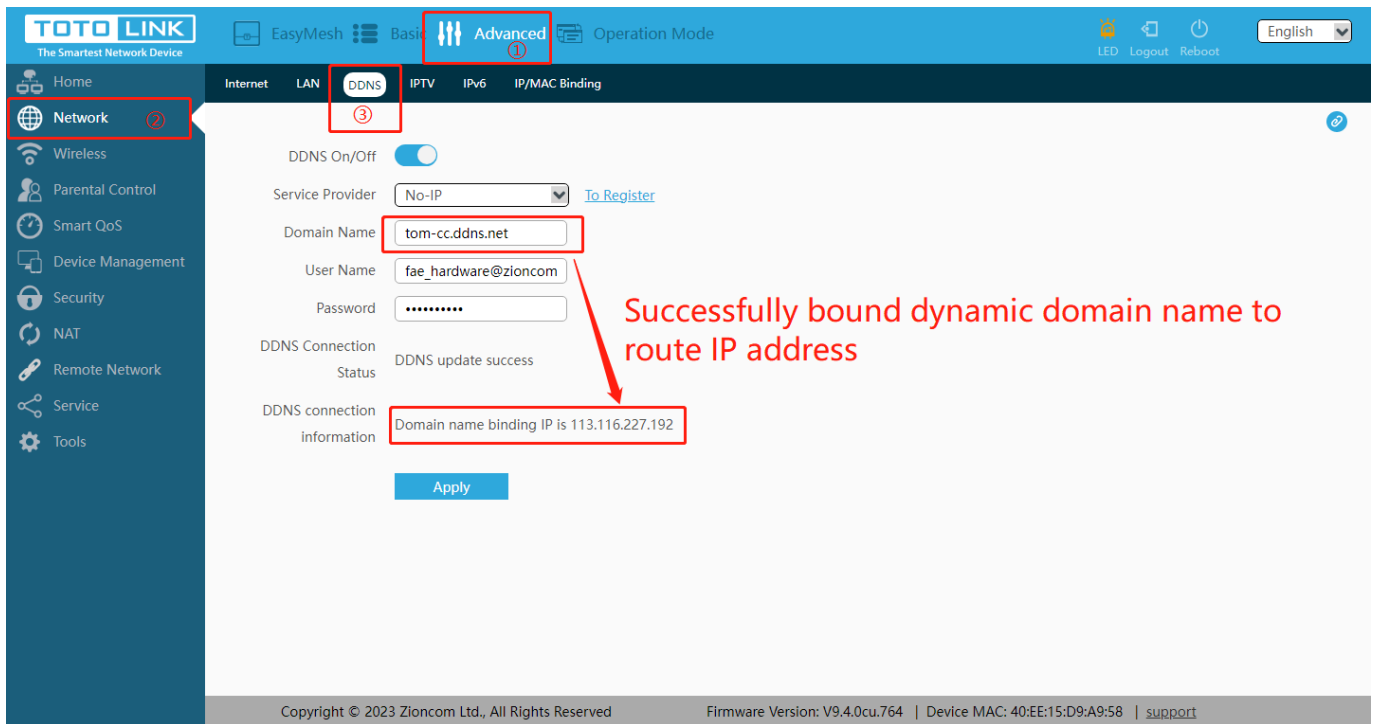
Copyright © 2023 Zioncom Ltd., All Rights Reserved | Firmware Version: V9.4.0cu.764 | Device MAC: 40:EE:15:D9:A9:58 | [support](#)

STEP 4 :

Select Advanced Settings ->Network ->DDNS, enable the ddns function, then select your ddns service provider

(support: DynDNS, No IP, WWW.3322. org), and enter the corresponding service provider's username and password.

After saving, the domain name will automatically bind to your public IP address.

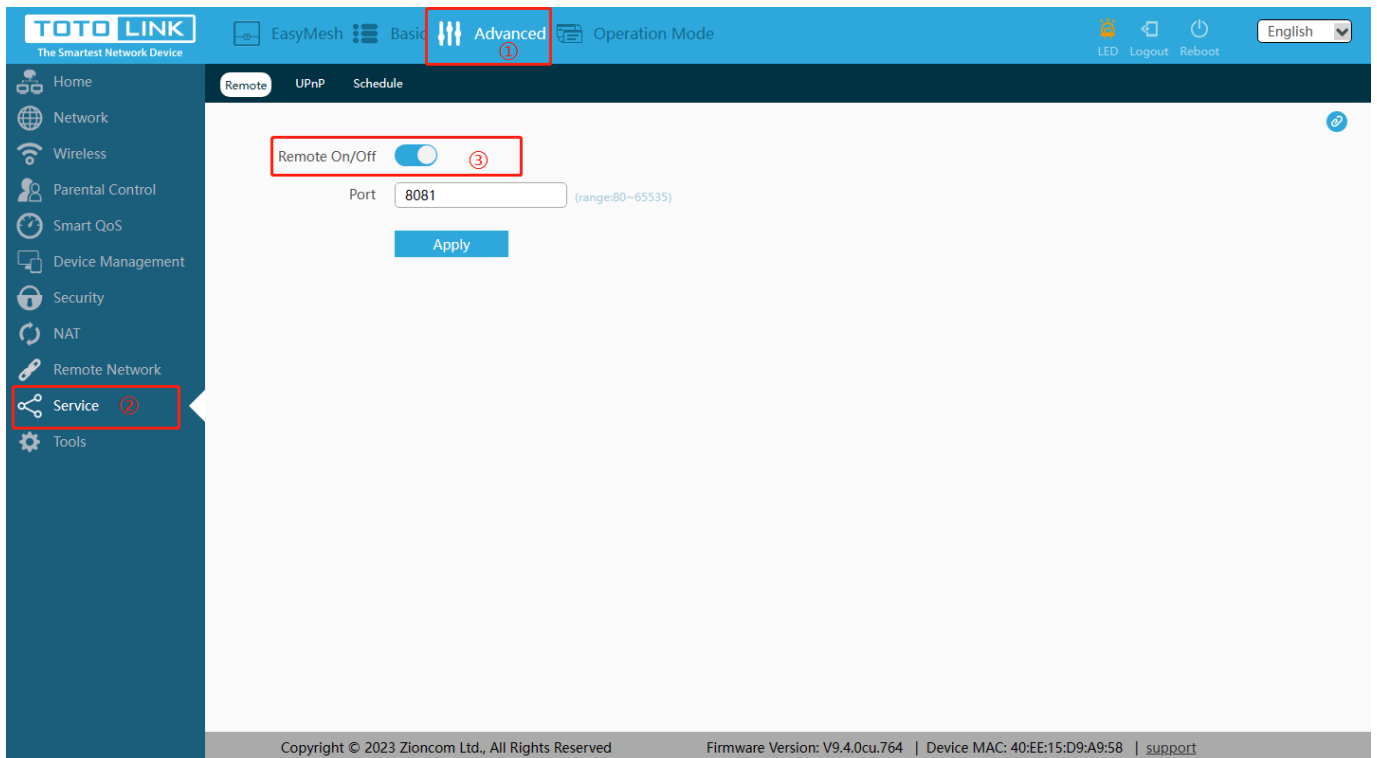


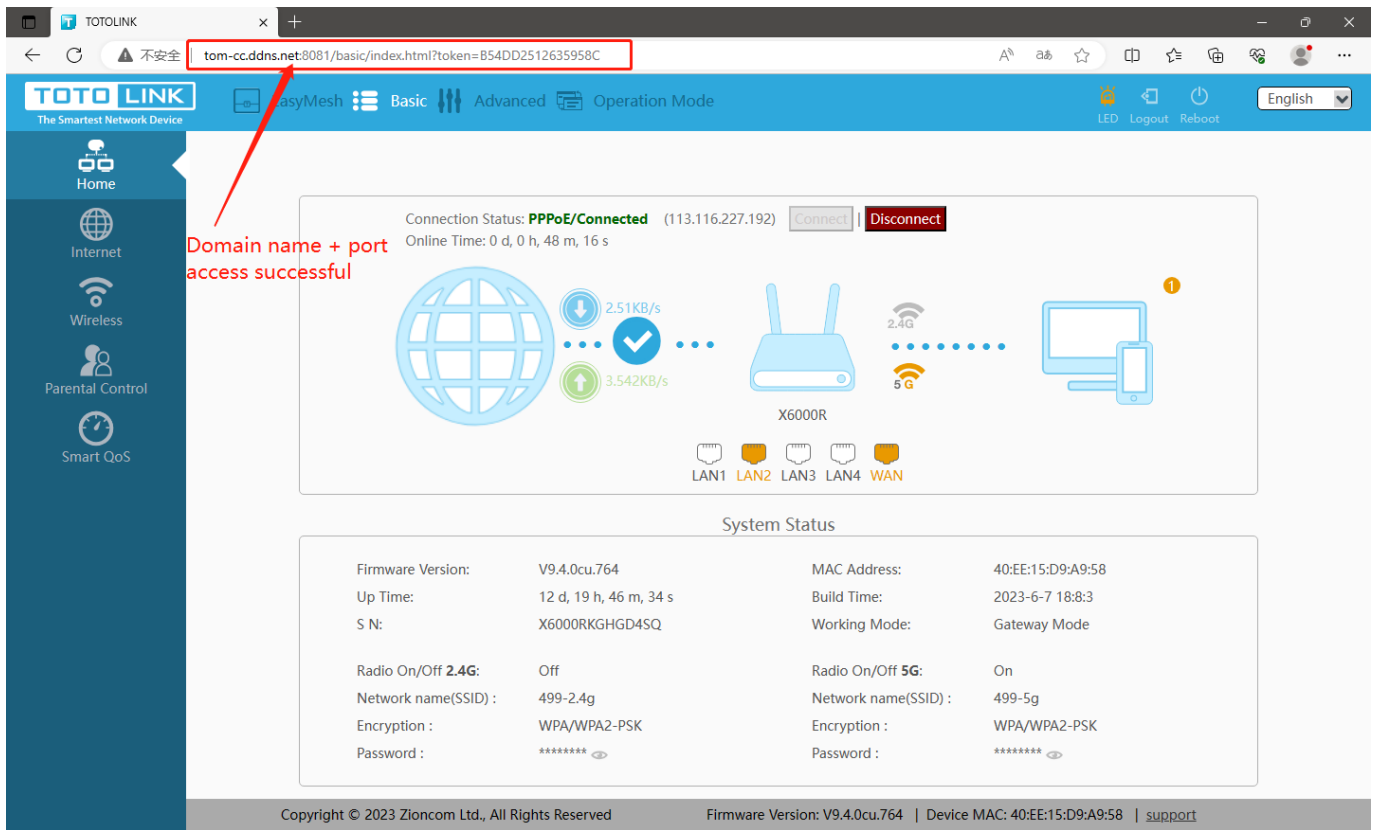
STEP 5:

After everything is set up, you can open the remote management function for testing.

By using a dynamic domain name and port, you can access the router management page even if it is not within the same local area network.

If the access is successful, it indicates that your DDNS settings are successful.





You can also ping the domain name through the CMD of the PC, and if the returned IP is a WAN port IP address, it indicates successful binding.

```
C:\WINDOWS\system32\cmd.exe
Microsoft Windows [版本 10.0.19045.3391]
(c) Microsoft Corporation。保留所有权利。

C:\Users\GuoJie>ping www.baidu.com

正在 Ping www.a.shifen.com [14.119.104.189] 具有 32 字节的数据:
来自 14.119.104.189 的回复: 字节=32 时间=13ms TTL=56
来自 14.119.104.189 的回复: 字节=32 时间=331ms TTL=56
来自 14.119.104.189 的回复: 字节=32 时间=17ms TTL=56
来自 14.119.104.189 的回复: 字节=32 时间=224ms TTL=56

14.119.104.189 的 Ping 统计信息:
    数据包: 已发送 = 4, 已接收 = 4, 丢失 = 0 (0% 丢失),
    往返行程的估计时间(以毫秒为单位):
        最短 = 13ms, 最长 = 331ms, 平均 = 146ms

C:\Users\GuoJie>
```