

How to manually set an IP address

Contents

- [1 How to manually set an IP address?](#)
- [2 Manually set IP address on Windows 10](#)
- [3 Set up steps](#)
- [4 Set up steps](#)
- [5 DOWNLOAD](#)
- [6 Related Posts](#)

How to manually set an IP address?

It is suitable for: **All TOTOLINK routers**

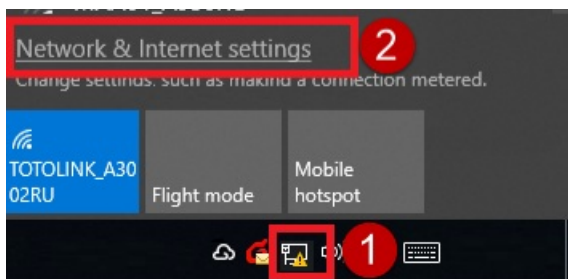
Application introduction: This article will illustrate way to manually set an IP address on Windows 10/Mobile phone.

Manually set IP address on Windows 10

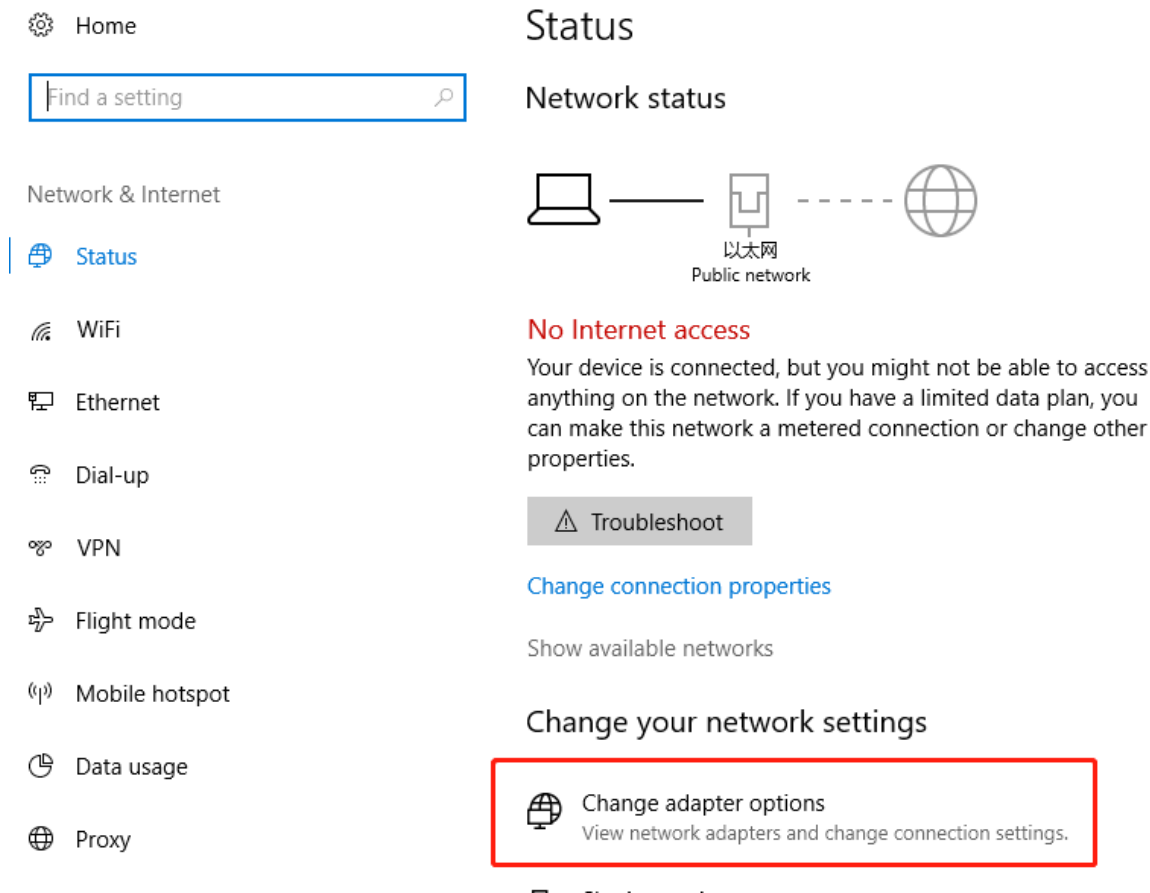
Set up steps

1-1. Find the small computer icon in the lower right corner of your computer desktop click on “**Network & Internet settings**”.

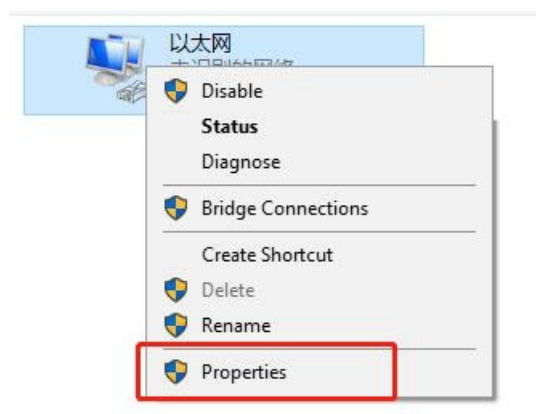
5bdc16095deac.png



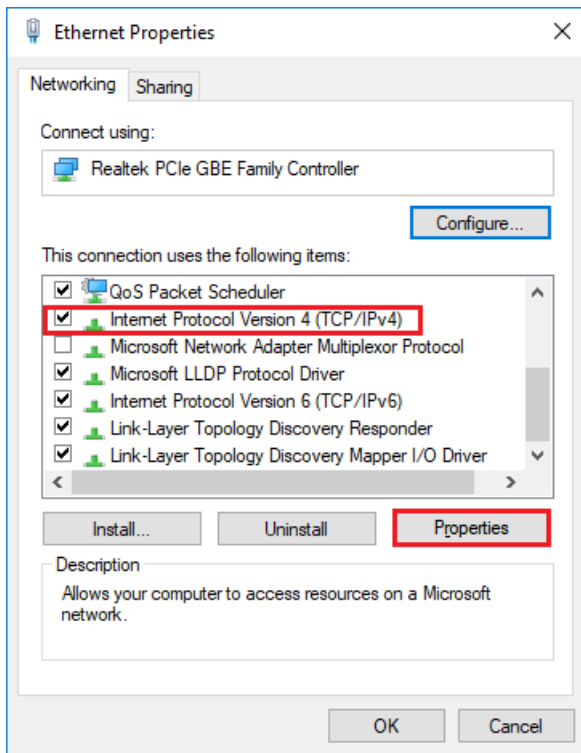
1-2. Pop up the Network & Internet Center interface, click on “**Change adapter options**” under Related settings.



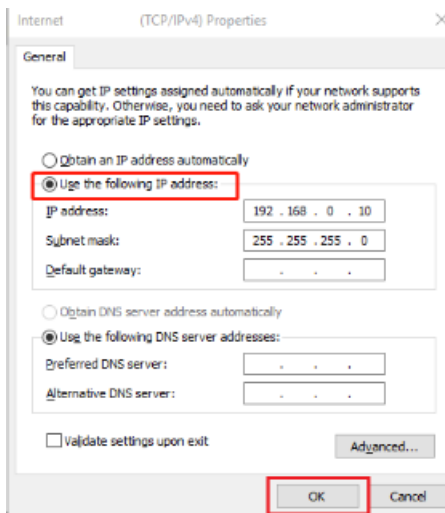
1-3. After open changing adapter options,find **Ethernet**,click and select **Properties**.(If you want to check the wireless IP address, find **WLAN**)



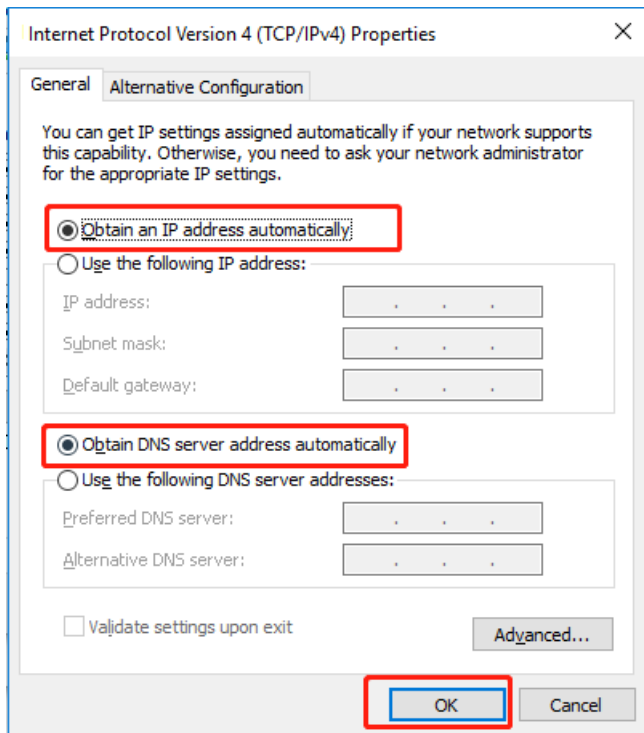
1-4. Select “**Internet Protocol Version 4 (TCP/IPv4)**”,click on “**Properties**”.



1-5. To manually set IP address, select “**Use the following IP address**”, set the IP address and subnet mask; Finally click on“**ok**”.Take the IP address 192.168.0.10 as an example



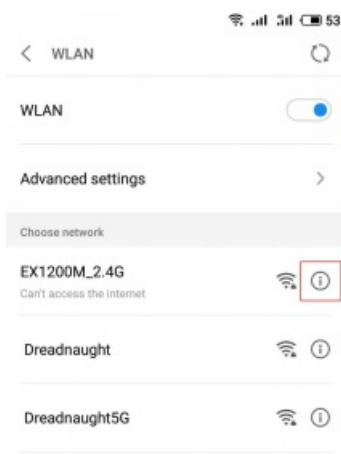
1-6. When you don't need to set the IP address manually, Please select Obtain an IP address automatically and Obtain DNS Server address automatically.



Manually set IP address on Mobile phone

Set up steps

1-1. Click **Settings** on the screen-> **Wireless Network (or Wi-Fi)**, click on the exclamation mark behind the wireless signal.



Note: Before manually set IP address , make sure the wireless terminal is currently connected or is connecting to the wireless signal.

1-2. Click **Static**, enter the corresponding parameters in the IP address, gateway, and network mask positions, and click Save. Take the IP address 192.168.0.10 as an example.

Static IP

Static IP
EX1200M_2.4G

IP settings

IP address 192.168.0.10

Gateway 192.168.0.1

Netmask 255.255.255.0

DNS 1

DNS 2

1-3. When you don't need to set the IP address manually, Please turn off **static** IP.

Static IP

Static IP
EX1200M 2.4G

IP settings

IP address 0.0.0.0

Gateway 0.0.0.0

Netmask 255.255.255.0

DNS 1 0.0.0.0

DNS 2 0.0.0.0

DOWNLOAD

How to manually set an IP address – [[Download PDF](#)]



Manuals+