

How to login to router by manually configuring IP

Contents

- [1 How to login to router by manually configuring IP?](#)
- [2 Set up steps](#)
- [3 DOWNLOAD](#)
- [4 Related Posts](#)

How to login to router by manually configuring IP?

It is suitable for: **All TOTOLINK routers**

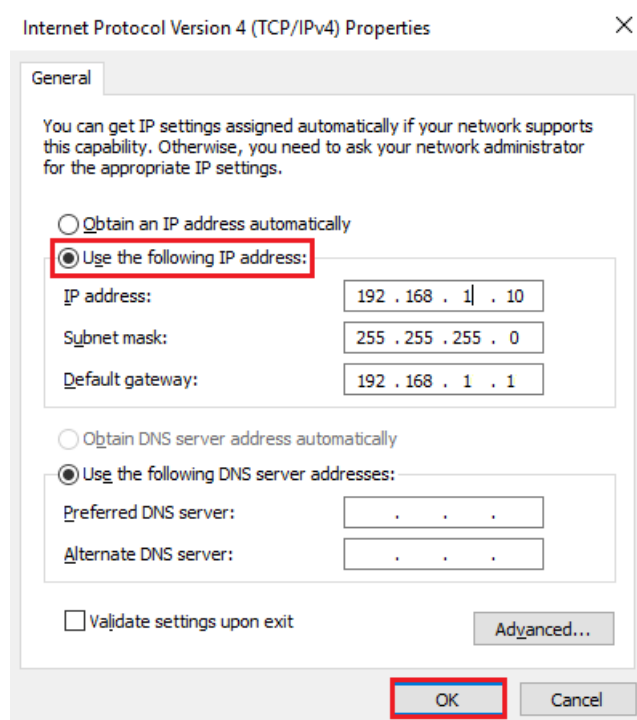
Set up steps

STEP-1: Connect your computer

Connect to the router's LAN port with a network cable from a computer network port (or to search for and connect the router's wireless signal).

STEP-2: Assigned manually IP Address

2-1. If the router's LAN IP address is 192.168.1.1, please type in IP address 192.168.1.x "x" range from 2 to 254 , the Subnet Mask is 255.255.255.0 and Gateway is 192.168.1.1.



Internet Protocol Version 4 (TCP/IPv4) Properties

General

You can get IP settings assigned automatically if your network supports this capability. Otherwise, you need to ask your network administrator for the appropriate IP settings.

☐ Obtain an IP address automatically

☒ Use the following IP address:

IP address: 192 . 168 . 1 | . 10

Subnet mask: 255 . 255 . 255 . 0

Default gateway: 192 . 168 . 1 . 1

☐ Obtain DNS server address automatically

☒ Use the following DNS server addresses:

Preferred DNS server: . . .

Alternate DNS server: . . .

☐ Validate settings upon exit

Advanced...

OK Cancel

2-2. If the router's LAN IP address is 192.168.0.1, please type in IP address 192.168.0.x "x" range from 2 to 254 , the Subnet Mask is 255.255.255.0 and Gateway is 192.168.0.1.

Internet Protocol Version 4 (TCP/IPv4) Properties

General

You can get IP settings assigned automatically if your network supports this capability. Otherwise, you need to ask your network administrator for the appropriate IP settings.

☐ Obtain an IP address automatically

☒ Use the following IP address:

IP address: 192 . 168 . 0 . 10

Subnet mask: 255 . 255 . 255 . 0

Default gateway: 192 . 168 . 0 . 1

☐ Obtain DNS server address automatically

☒ Use the following DNS server addresses:

Preferred DNS server: . . .

Alternative DNS server: . . .

☐ Validate settings upon exit

Advanced...

OK Cancel

STEP-3: Login to the TOTOLINK router in your browser. Take 192.168.0.1 as an example.

TOTOLINK

Not secure | 192.168.0.1/login.htm

Apps For quick access, place your bookmarks here on the bookmarks bar. Import bookmarks now...

USER LOGIN

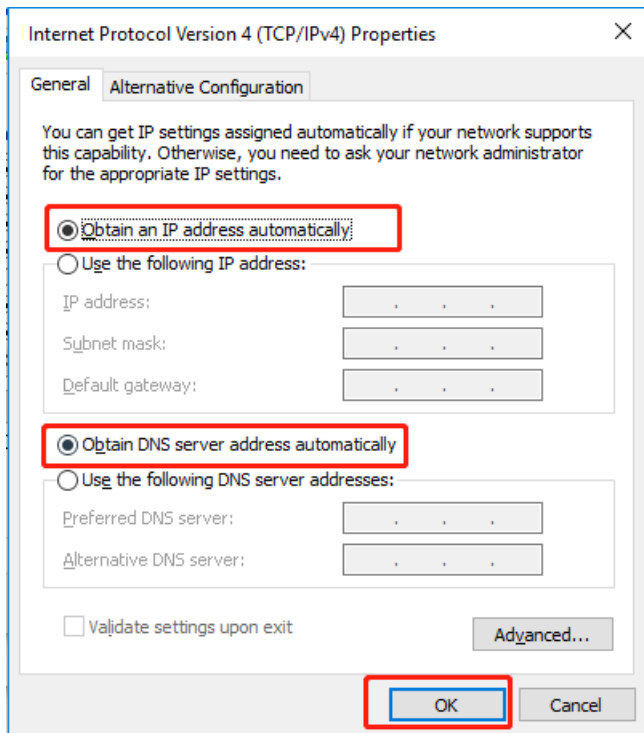
Forget Password?

User Name

Password

LOGIN

STEP-4: After setting up the router successfully, please select Obtain an IP address automatically and Obtain DNS Server address automatically.



Note: Your terminal device must choose to obtain an IP address automatically to access the network.

DOWNLOAD

How to login to router by manually configuring IP – [[Download PDF](#)]
