

# How to log into the Web page of EX300 using Mac OS

## Contents

- [1 How to log into the Web page of EX300 using Mac OS?](#)
- [2 Application introduction:](#)
- [3 Mac Settings](#)
- [4 EX300 Web Log in](#)
- [5 DOWNLOAD](#)
- [6 Related Posts](#)

## How to log into the Web page of EX300 using Mac OS?

It is suitable for: **EX300**

### Application introduction:

Since some Mac users got a router without WPS button, and they need to extend WiFi by EX300, what they need to do is to setup the IP address on Mac OS first.

### Mac Settings

1. Search for SSID 'TOTOLINK EX300', click connect.
2. After connected successfully, please launch 'System Preferences' from the Apple menu.
3. Click on the "Network" icon.
4. In the lower right, click on the 'Advanced' button.
5. Choose 'TCP/IP', in the pulldown menu next to "Configure IPv4" select "Manually"
6. Fill in the IP address: **192.168.1.100**  
  
subnet mask: **255.25.255.0**  
  
router: **192.168.1.254.**
7. Click 'OK'.
8. Click 'Apply'.

### EX300 Web Log in

## Open any browser

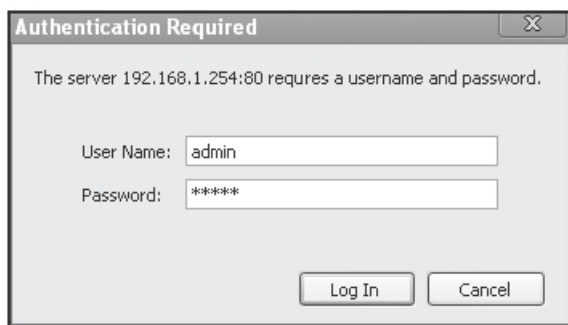
1. Type in 192.168.1.254 in the address field of Web Browser. Then press Enter key.



2. Click Setup Tool:



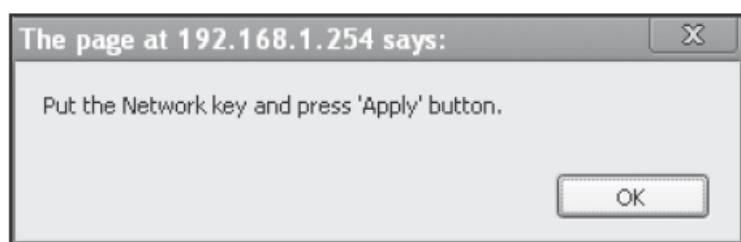
3. Enter User Name and Password.Both are admin in lower case letters.



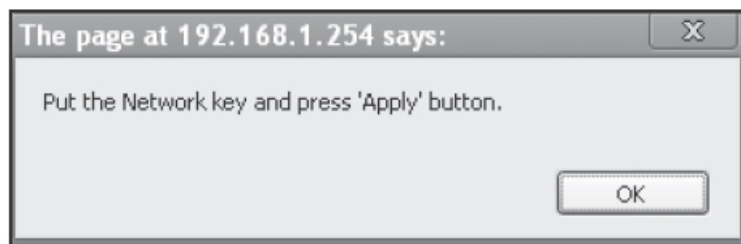
4. Click Extender Serup, choose Start to enable repeater function. Click Search AP.



5. Choose the one you would like to connect, and click Select AP.



6. If the SSID you selected is encrypted, it will pop up below window reminding you to input the network key to connect. Click OK.



7. Enter the right Encryption key to connect. Then click Apply.

Operation	<input checked="" type="radio"/> Start <input type="radio"/> Stop
Status	Stopped
SSID of upper AP	TOTOLINK N150RS <input type="button" value="Search AP"/>
Authentication	WPAPSK
Encryption	<input type="radio"/> Disable <input type="radio"/> WEP64 <input type="radio"/> WEP128 <input checked="" type="radio"/> TKIP <input type="radio"/> AES
Encryption key	<input type="text"/>
<input type="button" value="Apply"/>	

The Status line will show you if connected successfully.

---

## DOWNLOAD

How to log into the Web page of EX300 using Mac OS – [ [Download PDF](#) ]

---