

# How to log in to extender by manually configuring IP

## Contents

- [1 How to log in to extender by manually configuring IP?](#)
- [2 Set up steps](#)
- [3 DOWNLOAD](#)
- [4 Related Posts](#)

## How to log in to extender by manually configuring IP?

It is suitable for: **EX200, EX201, EX1200M, EX1200T**

### Set up steps

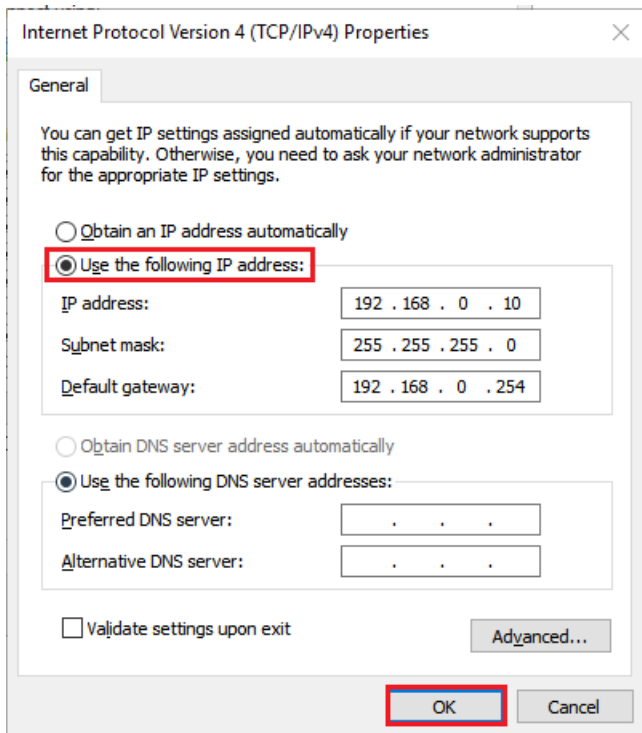
#### STEP-1:

Connect to the extender's LAN port with a network cable from a computer network port (or to search for and connect the expander's wireless signal)

Note: The name of the wireless password after successful expansion is either the same as the upper level signal, or it is a custom modification of the extension process.

#### STEP-2:

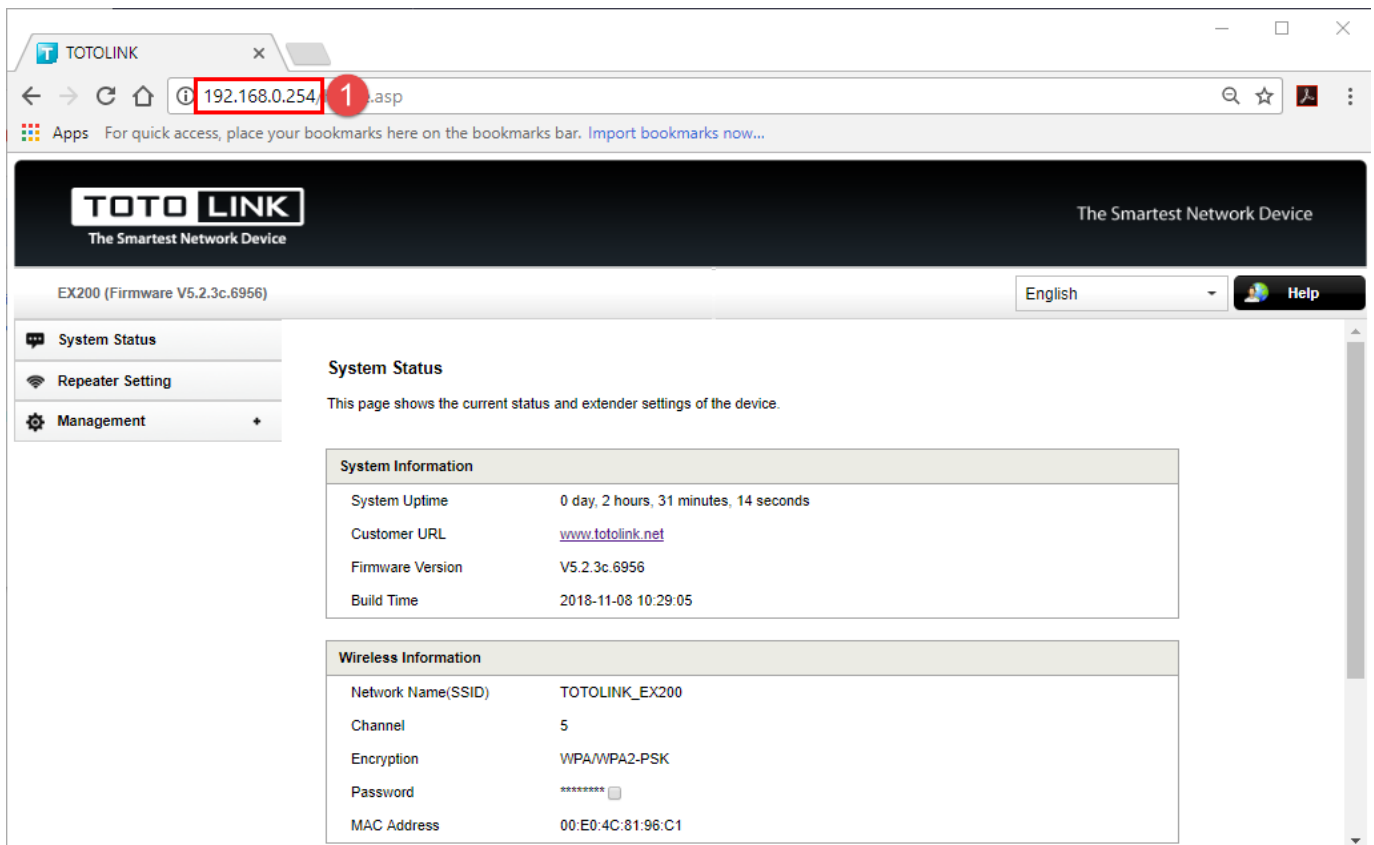
Extender LAN IP address is 192.168.0.254, please type in IP address 192.168.0.x "x" range from 2 to 254 , the Subnet Mask is 255.255.255.0 and Gateway is 192.168.0.254.



**Note:** How to manually assign an IP address, please click the FAQ# (How to manually set an IP address)

### STEP-3:

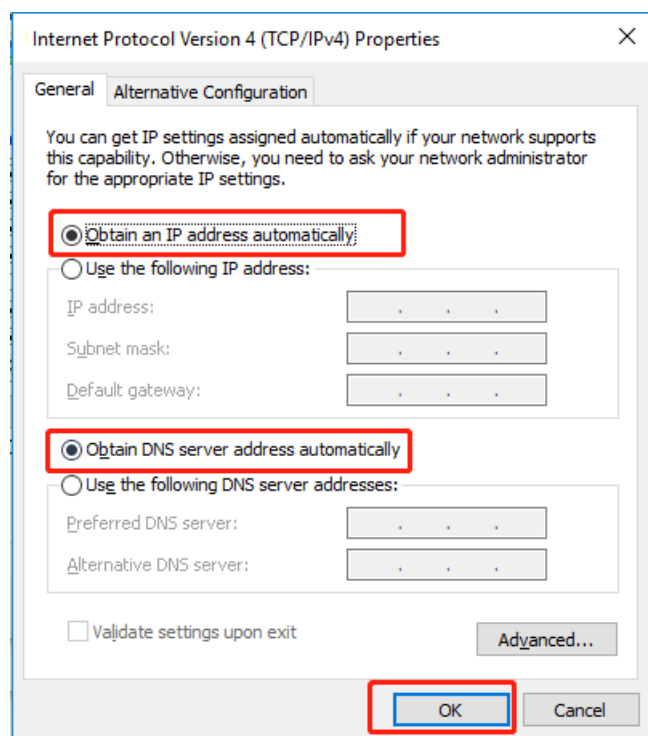
Open the browser, clear the address bar, enter 192.168.0.254 to the management page.



### STEP-4:

After the extender is successfully set up, please select Obtain an IP address automatically and Obtain DNS Server

address automatically.



**Note:** Your terminal device must choose to obtain an IP address automatically to access the network.

---

## DOWNLOAD

How to log in to extender by manually configuring IP – [[Download PDF](#)]

---