

How to log in CP900's setting interface?

Contents

- [1 How to log in CP900's setting interface?](#)
- [2 Application introduction:](#)
- [3 DOWNLOAD](#)
- [4 Related Posts](#)

How to log in CP900's setting interface?

It is suitable for: CP900_V1

Application introduction:

If you want to login to CP900's setting interface to configure some settings, please follow the steps below.

STEP-1: Client mode

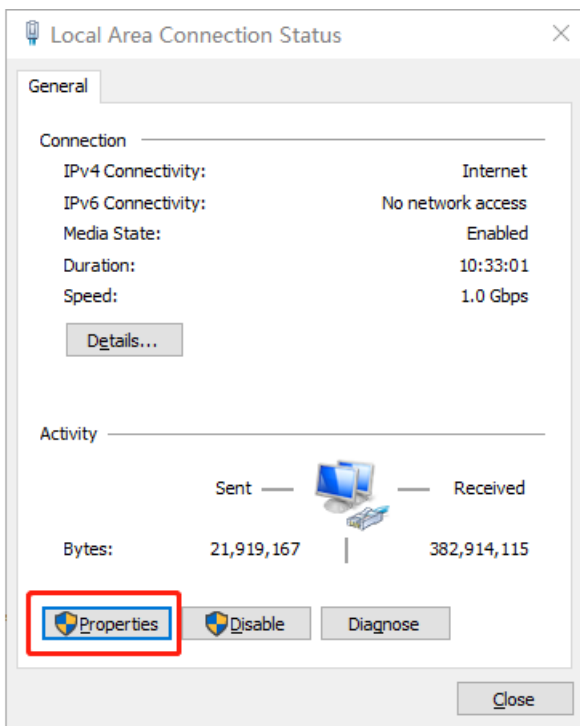
1-1. Connect your computer to the router by cable or wireless

1-2. Setup you PC to get the IP automatically (Here I take system W10 for example)

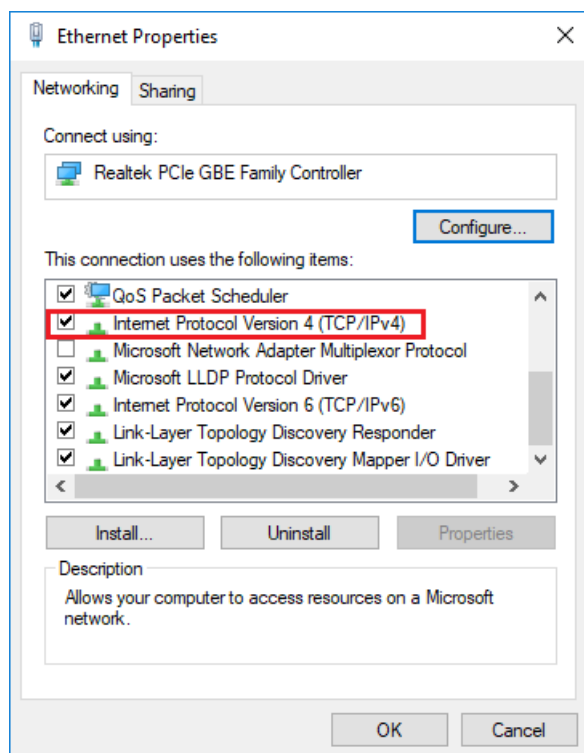
1-3. Click on  at the bottom right corner on the screen



1-4. Click **[Properties]** button in the lower left corner



1-5. Double click on “Internet Protocol (TCP/IP)”.

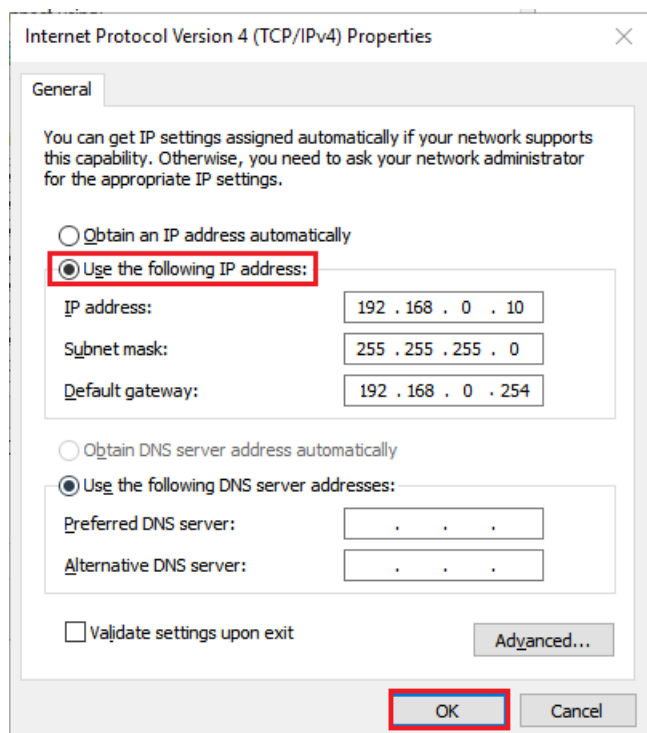


STEP-2:

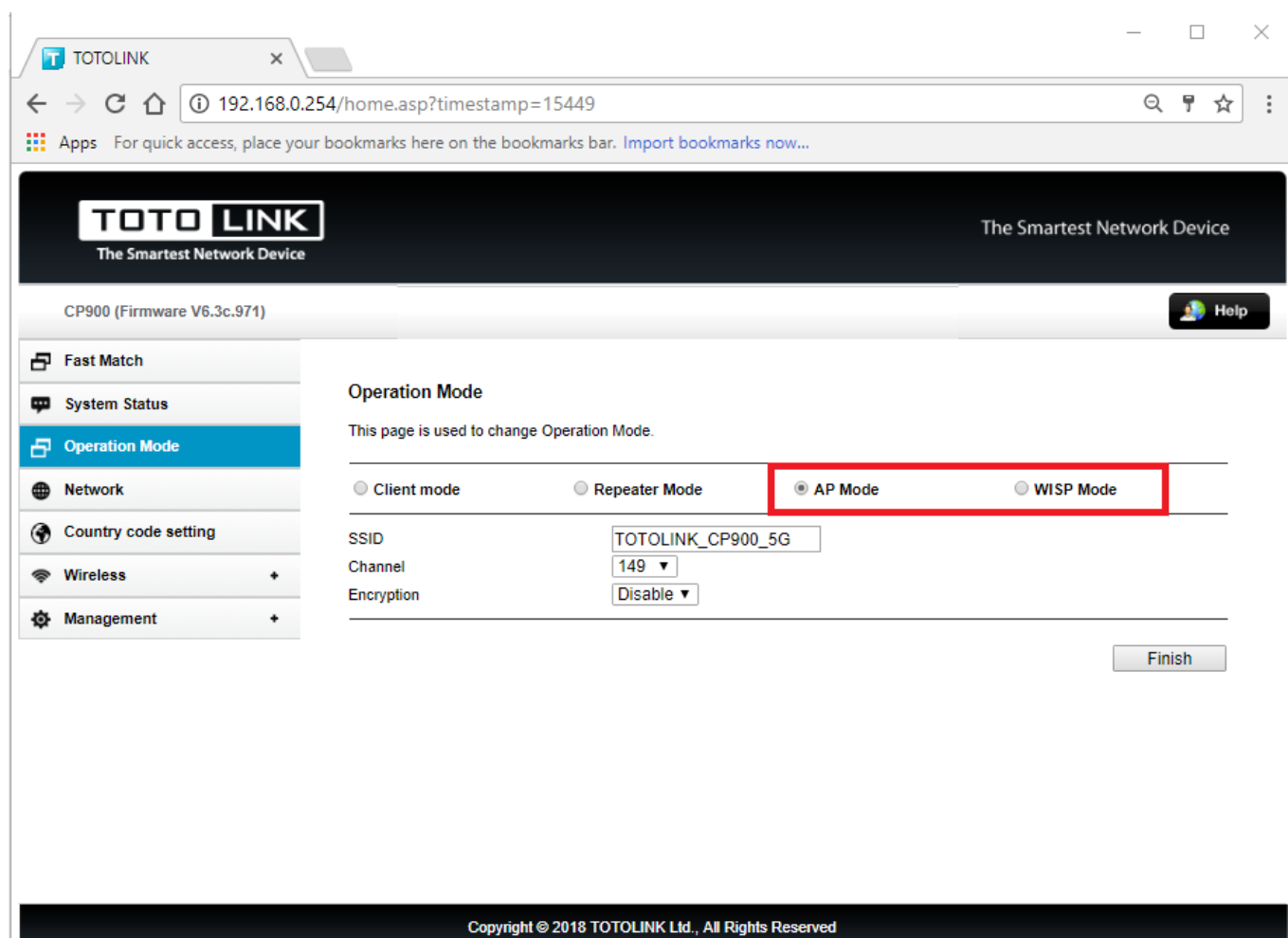
Now you have two ways to configure the TCP/IP protocol below

2-1. Use the first default IP address 192.168.0.254:

Assigned manually IP address 192.168.0.x “x” range from 2 to 253 , the Subnet Mask is 255.255.255.0 and Gateway is 192.168.0.254.



Enter **192.168.0.254** into the address bar of your browser. Log in the settings interface.

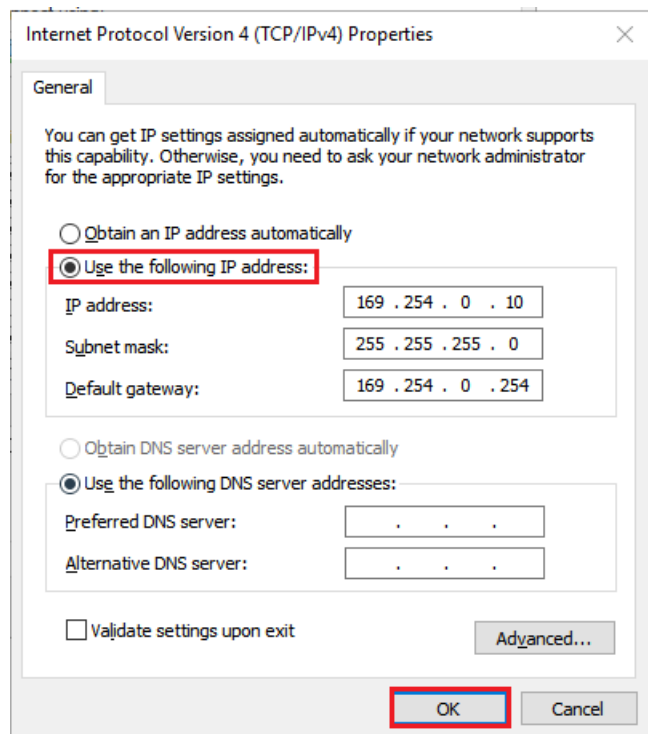


[Note]:

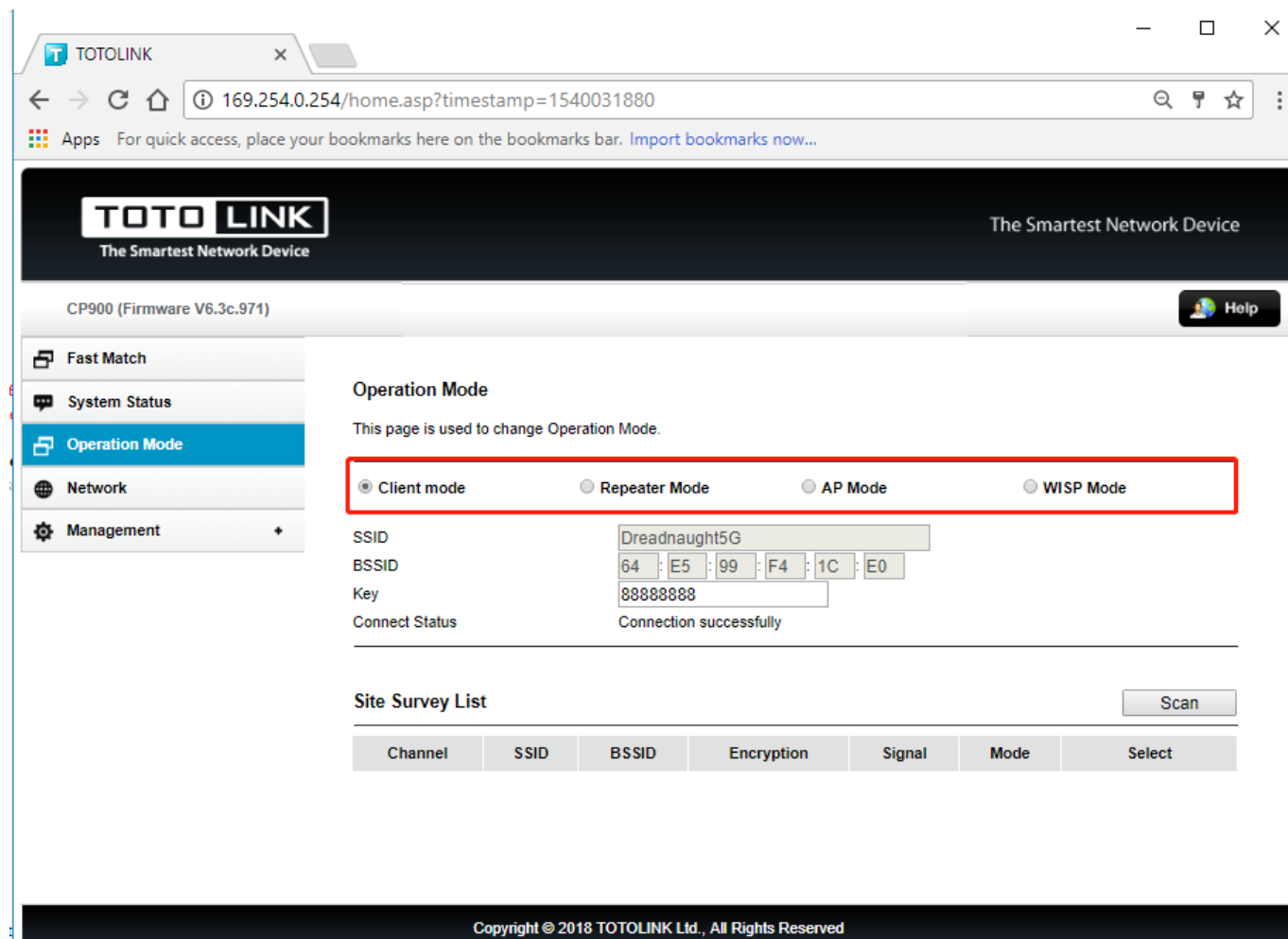
192.168.0.254 can only be used in AP mode and WISP mode; Client mode and Repeater mode please use his second IP address 169.254.0.254.

2-2. Use the second IP address 169.254.0.254:

Assigned manually IP address 169.254.0.x “x” range from 2 to 253 , the Subnet Mask is 255.255.255.0 and Gateway is 169.254.0.254.



Enter **169.254.0.254** into the address bar of your browser. Log in the settings interface.

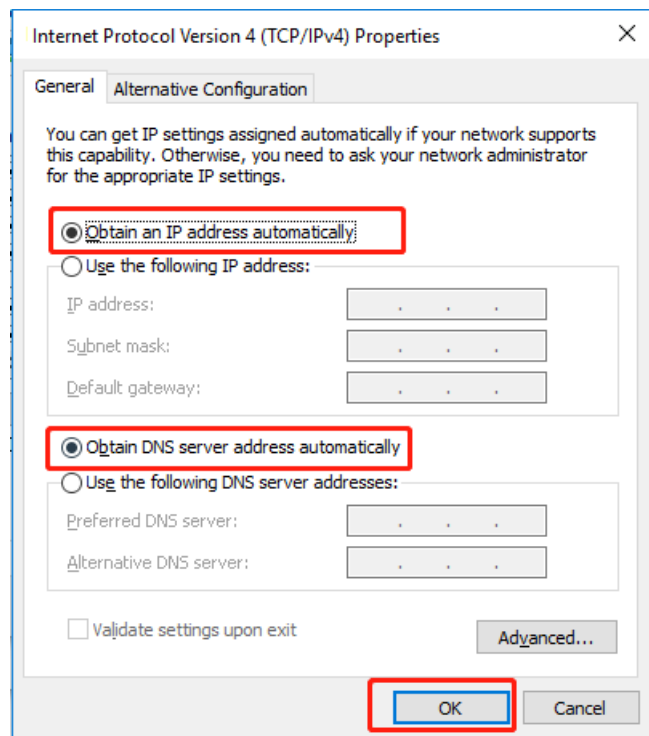


[Note]:

169.254.0.254 supports login in Client mode, Repeater mode, AP mode and WISP mode.

STEP-3:

After the setup is successful, your computer must choose to obtain an IP address automatically to access the network. As the picture shows.



DOWNLOAD

How to log in CP900's setting interface – [[Download PDF](#)]
