

# How to configure port forwarding

## Contents

- [1 How to configure port forwarding](#)
- [2 DOWNLOAD](#)
- [3 Related Posts](#)

## How to configure port forwarding

It is suitable for: **N600R, A800R, A810R, A3100R, T10, A950RG, A3000RU**

**Application introduction:** By port forwarding, the data for Internet applications can pass through the firewall of the router or gateway. This article will show you how to forward ports on your router, take A3000RU as an example.

### STEP-1:

In the left menu of the web interface, click **Firewall ->Port Forwarding ->Enable**

A3000RU (Firmware V5.9c.680)

System Status

Operation Mode

Network

5G Wireless

2.4G Wireless

QoS

Firewall

Firewall Type

IP/Port Filtering

MAC Filtering

URL Filtering

Port Forwarding

VPN Passthrough

DMZ

Rule Schedule Setting

USB Storage

Management

Port Forwarding

You may set Port Forwarding to provide services on Internet.

On/Off

Enable

Add a rule

Protocol

TCP+UDP

IP Address

192.168.0.

Scan

Internal Port

(1-65535)

External Port

(1-65535)

Comment

Add

Current Port Forwarding List (The maximum entry count is 10)

ID	IP Address	Protocol	Internal Port	External Port	Comment	Select
----	------------	----------	---------------	---------------	---------	--------

Delete

Reset

### STEP-2:

Select the port protocol; Click **Scan**

On/Off

Enable ▾

#### Add a rule

Protocol

TCP+UDP

IP Address

TCP

UDP

0

Scan

Internal Port

(1-65535)

External Port

(1-65535)

Comment

Add

### STEP-3:

Select the PC IP address;

192.168.0.1/firewall/arpinfo.asp#flag=3 - Chromium

192.168.0.1/firewall/arpinfo.asp#flag=3

#### MAC List

You could show this current MAC clients list.

IP Address	MAC Address	Select
192.168.0.242	90:9f:33:e8:59:22	<input checked="" type="radio"/>
192.168.0.4	bc:3d:85:66:a6:53	<input type="radio"/>

Refresh Close

### STEP-4:

Input the port you need and note; Then click **Add**.

#### Add a rule

Protocol

TCP

IP Address

192

168

0

242

Scan

Internal Port

21

(1-65535)

External Port

21

(1-65535)

Comment

ftpserv

Add

## STEP-5:

Ensure that the port successfully added to the **Current Port Forwarding List**.

Current Port Forwarding List (The maximum entry count is 10)

ID	IP Address	Protocol	Internal Port	External Port	Comment	Select
1	192.168.0.242	TCP	21	21	ftpserver	<input type="checkbox"/>

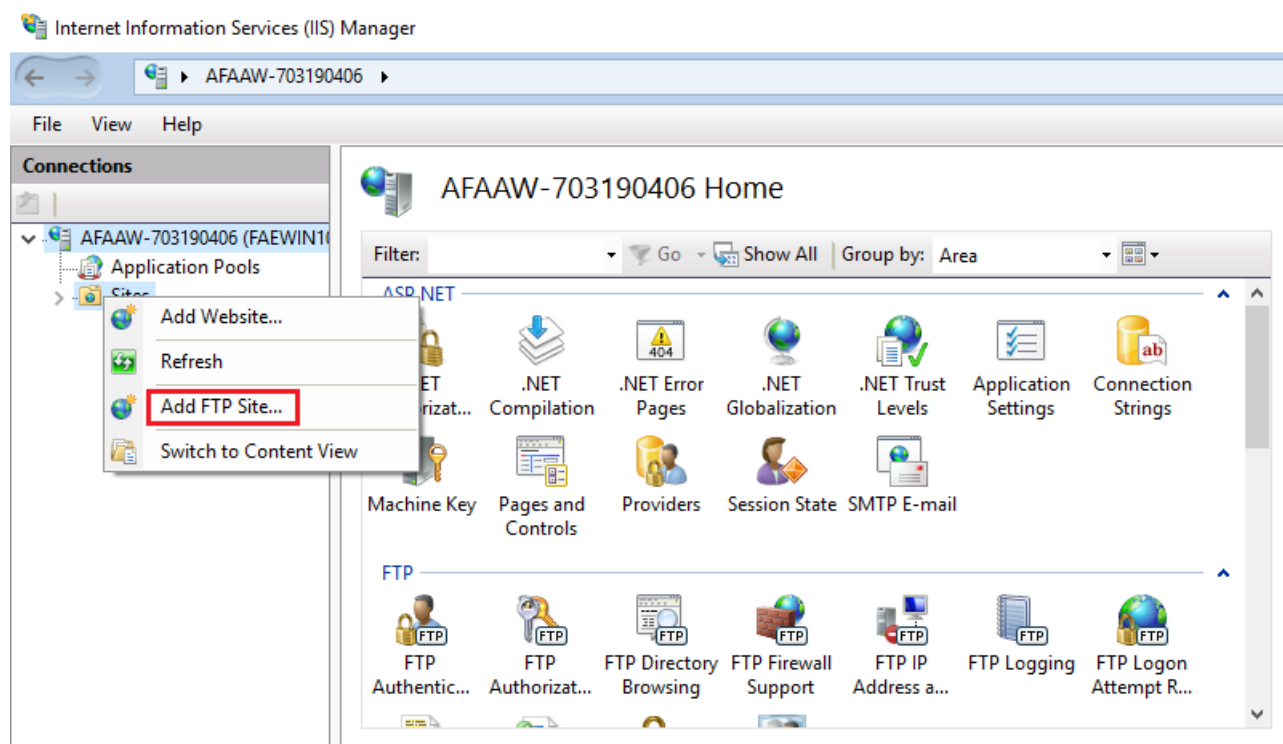
Delete

Reset

**The router's port forwarding settings are complete**

Here with FTP server as an example (WIN10), check that the port forwarding is successfully.

1. Open the **Control Panel\All Control Panel Items\Administrative Tools\Add FTP Server**.



2. Input the ftp site name, Select the path; Click next.

**Site Information**

FTP site name:

totolink

Content Directory

Physical path:

C:\Users



Previous

Next

Finish

Cancel

3. Select the target PC address Sets the port, Click Next;

**Binding and SSL Settings**

Binding

IP Address:

192.168.0.242

Port:

21

All Unassigned

192.168.0.242

Virtual Host (example: ftp.contoso.com):

☒ Start FTP site automatically

SSL

☒ No SSL☐ Allow SSL☐ Require SSL

SSL Certificate:

Not Selected

Select...

View...

Previous

Next

Finish

Cancel

4. Define users and permissions, Click Finish.

**Authentication and Authorization Information**

Authentication

☒ Anonymous

☒ Basic

Authorization

Allow access to:

All users

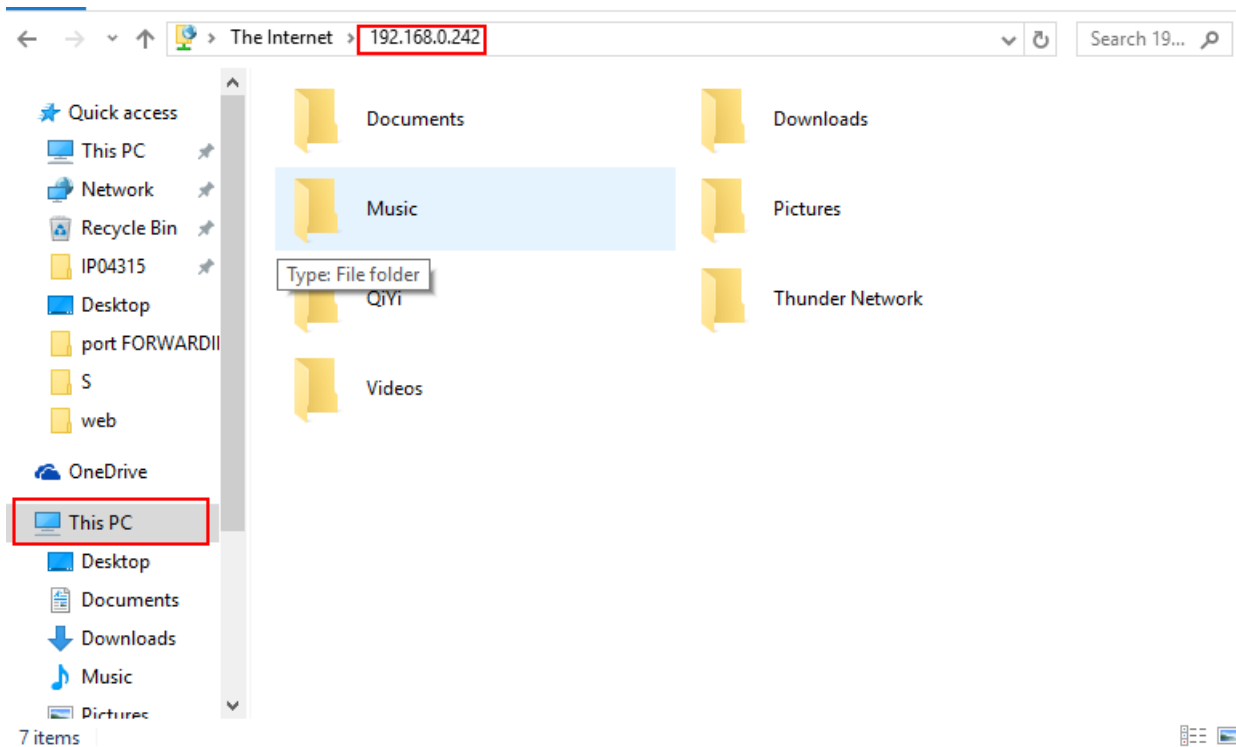
Permissions

☒ Read

☒ Write

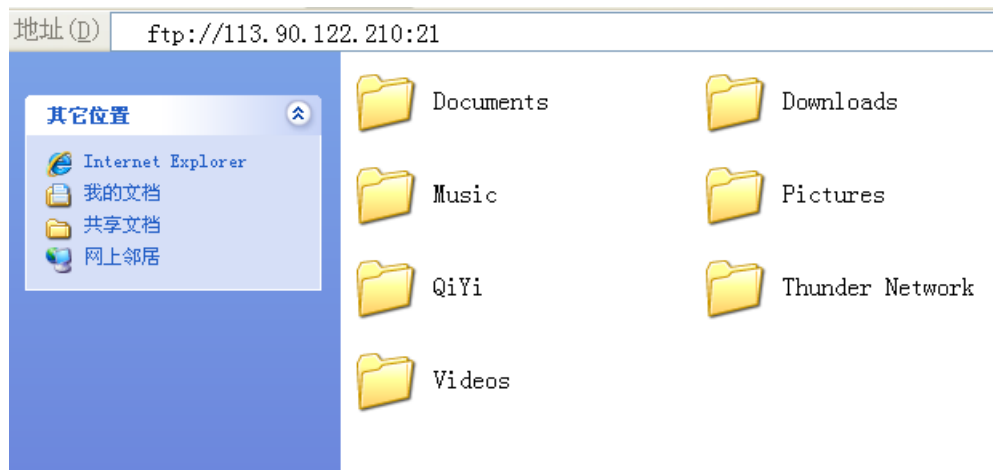
Previous Next Finish Cancel

5. Now, you can access FTP over a LAN, Login Address: **ftp://192.168.0.242;**



6. Check ROUTER WAN IP, in the public network use it to log into the FTP Server;

E.g **ftp://113.90.122.205:21;**



Normal visit, verify that the port forwarding OK

---

## DOWNLOAD

How to configure port forwarding – [[Download PDF](#)]

---