

How to change SSID of extender

Contents

- [1 How to change SSID of extender?](#)
- [2 Diagram](#)
- [3 DOWNLOAD](#)
- [4 Related Posts](#)

How to change SSID of extender?

It is suitable for: **EX1200M**

Application introduction: The wireless extender is a repeater (Wi-Fi signal amplifier), which relays a WiFi signal, expands the original wireless signal, and extends the WiFi signal to other places where there is no wireless coverage or where the signal is weak.

Diagram



Set up steps

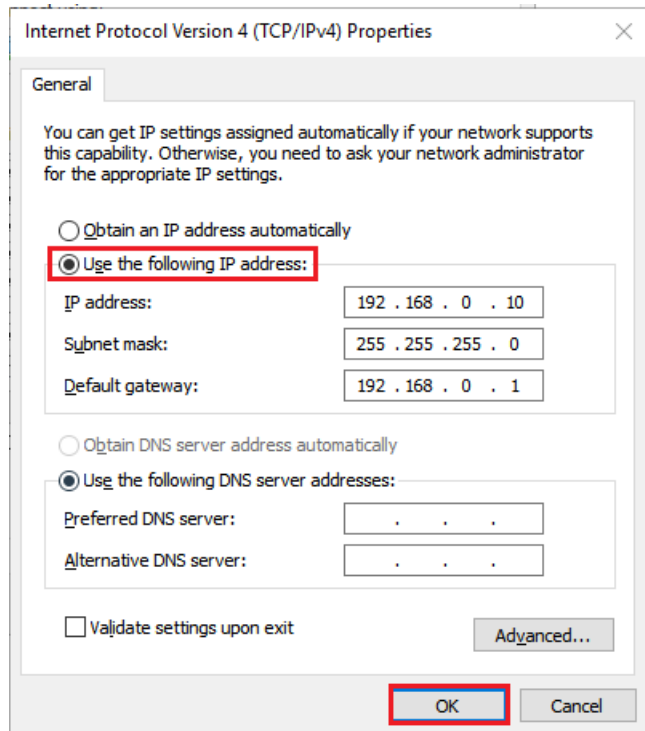
STEP-1 Configure the extension

- First, make sure the extender has successfully extended the main router. If no Settings have been set, click the reference instruction manual.
- Connect to the extender's LAN port with a network cable from a computer network port (or use a cell phone to search for and connect the expander's wireless signal)

Note: The name of the wireless password after successful expansion is either the same as the upper level signal, or it is a custom modification of the extension process.

STEP-2 Assigned manually IP address

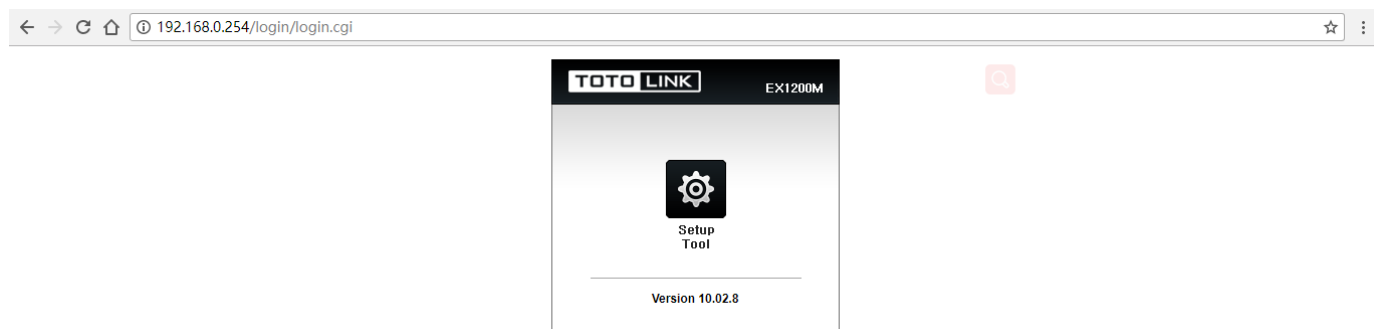
Extender LAN IP address is 192.168.0.254, please type in IP address 192.168.0.x “x” range from 2 to 254 , the Subnet Mask is 255.255.255.0 and Gateway is 192.168.0.1.



Note: How to manually assign an IP address, please click the FAQ# (How to manually set an IP address)

STEP-3 Login to the management page

Open the browser,clear the address bar,enter **192.168.0.254** to the management page click **Setup Tool**.



STEP-4 View or modify the wireless parameters

4-1. View the 2.4G wireless SSID and password

Click **1 Advanced Setup**-> **2 wireless(2.4GHz)**-> **3 Extender Setup**, **4** Select the SSID configuration type, **5** Modify the SSID, If you need to see the password, **6** check **Show**, Finally **7** click **Apply**.

Note: The password cannot be modified. It is the password for connecting to the upper router.

TOTO LINK The Smartest Network Device EX1200M

Refresh Save Help

Config Explorer

- Basic Setup
 - Status Summary
 - 2.4GHz Extender Setup
 - 5GHz Extender Setup
 - Firmware Upgrade
- Advanced Setup** (1)
 - Wireless(2.4GHz)** (2)
 - Extender Status
 - Extender Setup** (3)
 - MAC Authentication
 - Wireless Scheduler
 - Advanced Setup
 - Wireless(5GHz)
 - Extender Status
 - Extender Setup
 - MAC Authentication
 - Wireless Scheduler
 - Advanced Setup
- System

2.4GHz Extender Setup AP Scan

TOTOLINK_T10_2.4G (F4-28-53-BC-90-7C) **Extender / Connected** Channel number 11 100 %

My Wireless Network : TOTOLINK_EX1200M_2.4G

Wireless network with security (WPA2)

Dreadnaught (64-E5-99-F5-1C-E0) Channel number 10 100 %

Wireless network with security (WPA2)

@PHICOMM24 (00-6B-8E-FA-54-80) Channel number 2 55 %

Wireless network with security (WPA2)

Broadcom (00-90-4C-18-C0-64) Channel number 13 65 %

Wireless network without security

Hylon (EC-26-CA-CE-A0-EE) Channel

TOTOLINK_T10_2.4G

Mode ☒ Extender(AP+Client) ☐ Client ☐ AP ☐ Off

SSID of upper AP TOTOLINK_T10_2.4G

My SSID (4) Defined by user (5) EX1200M_2.4G ☒ SSID Broadcast

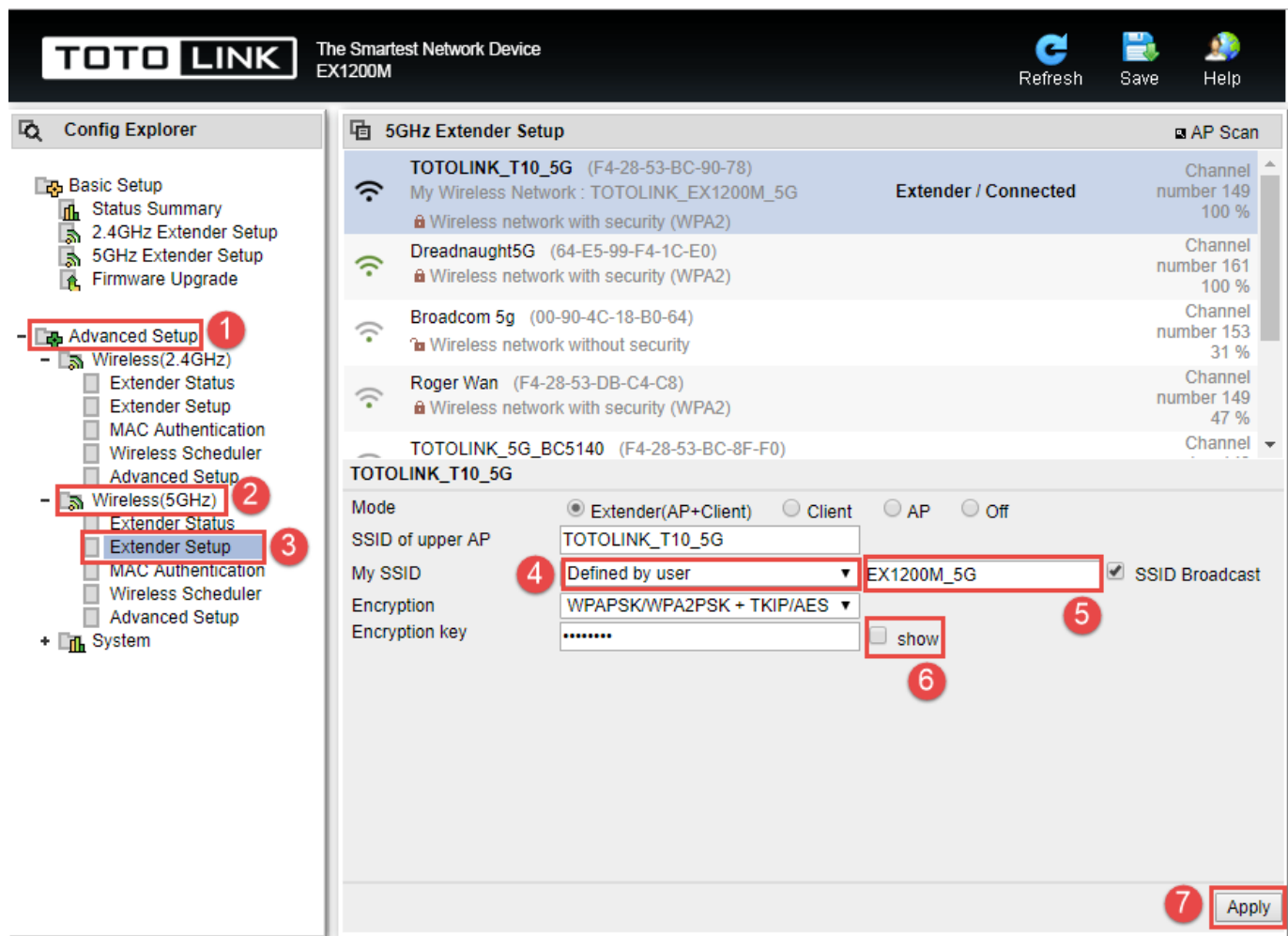
Encryption WPAPSK/WPA2PSK + TKIP/AES

Encryption key ☐ show (6)

(7) **Apply**

4-2. View the 5G wireless SSID and password

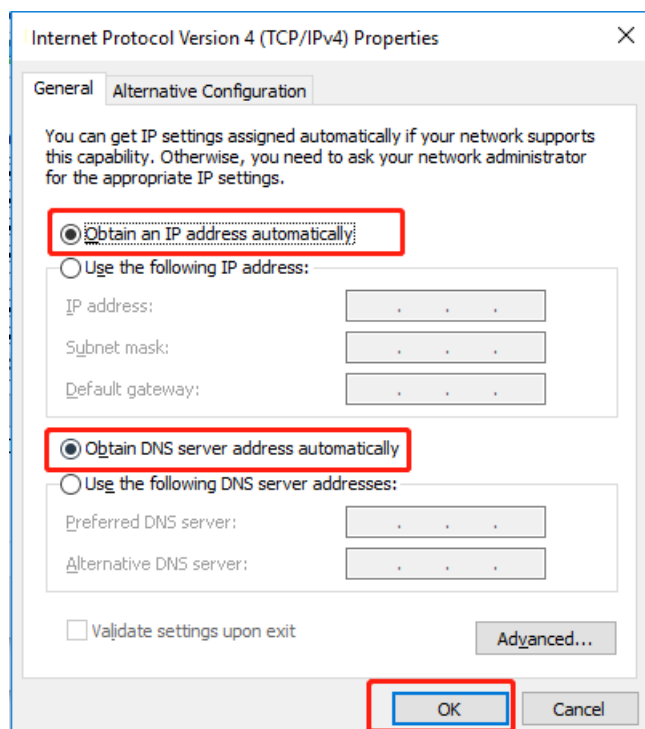
Click **1 Advanced Setup**-> **2 wireless(5GHz)**-> **3 Extender Setup**, **4** Select the SSID configuration type, **5** Modify the SSID, If you need to see the password, **6** check **Show**, Finally **7** click **Apply**.



Note: The password cannot be modified. It is the password for connecting to the upper router.

STEP-5 Assigned by DHCP Sever

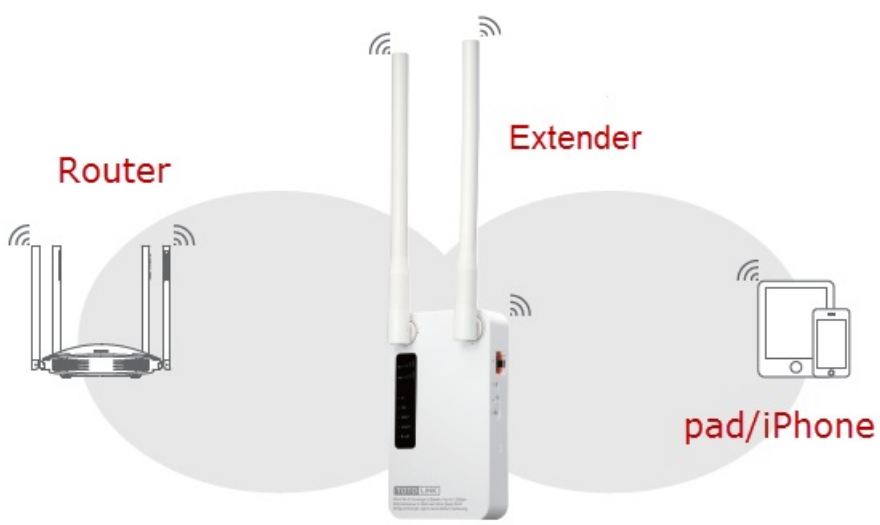
After you have successfully changed the expander's SSID, Please select Obtain an IP address automatically and Obtain DNS Server address automatically.



Note: After the extender is successfully set up, Your terminal device must choose to obtain an IP address automatically to access the network.

STEP-6 Extender position display

Move the Extender to a different location for a best Wi-Fi access.



DOWNLOAD

How to change SSID of extender – [[Download PDF](#)]
