

TOTOLINK EX300 Wireless N Range Extender



TOTOLINK EX300 Wireless N Range Extender Installation Guide

[Home](#) » [TOTOLINK](#) » TOTOLINK EX300 Wireless N Range Extender Installation Guide 

Contents

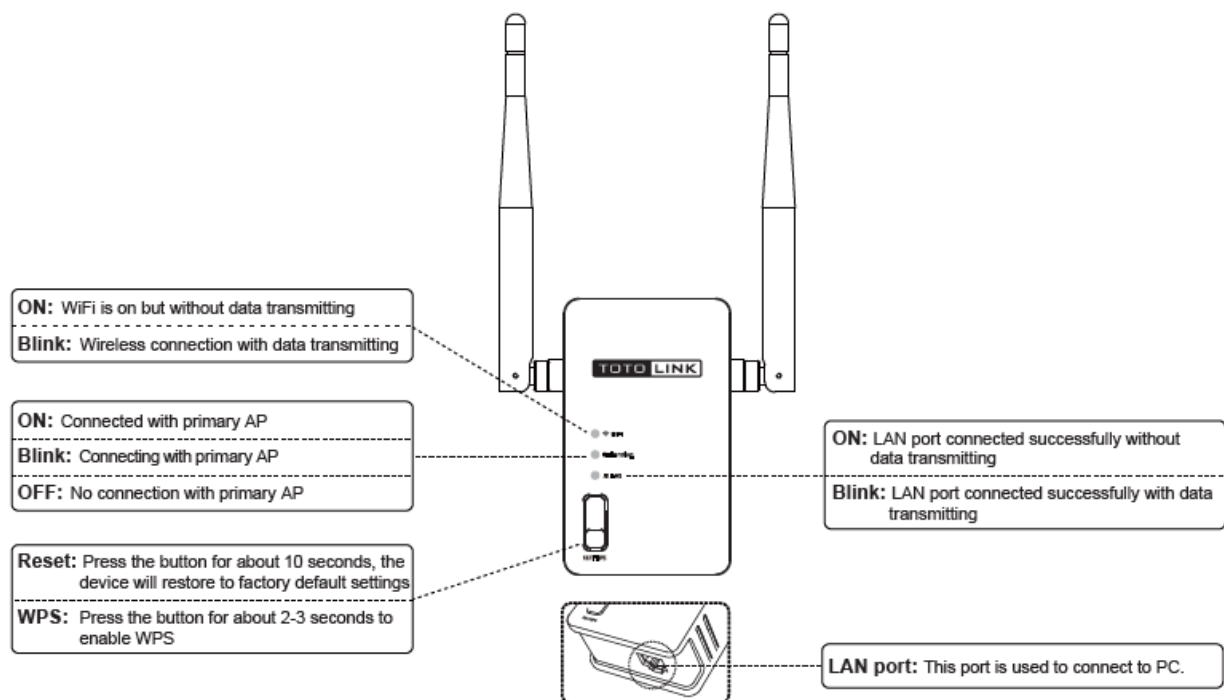
- 1 TOTOLINK EX300 Wireless N Range Extender
- 2 Product Introduction
- 3 Method One Easy Setup by WPS Button
- 4 Method Two: Setup via Web Interface
 - 4.1 Connect your PC to EX300
 - 4.2 Setup via Web Browser
- 5 Documents / Resources
 - 5.1 References

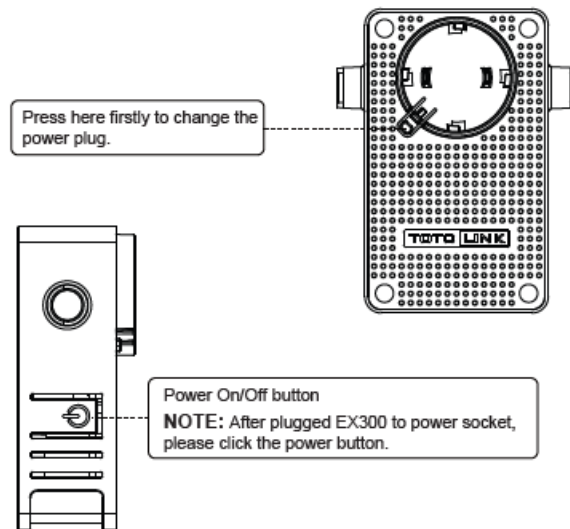


TOTOLINK EX300 Wireless N Range Extender



Product Introduction





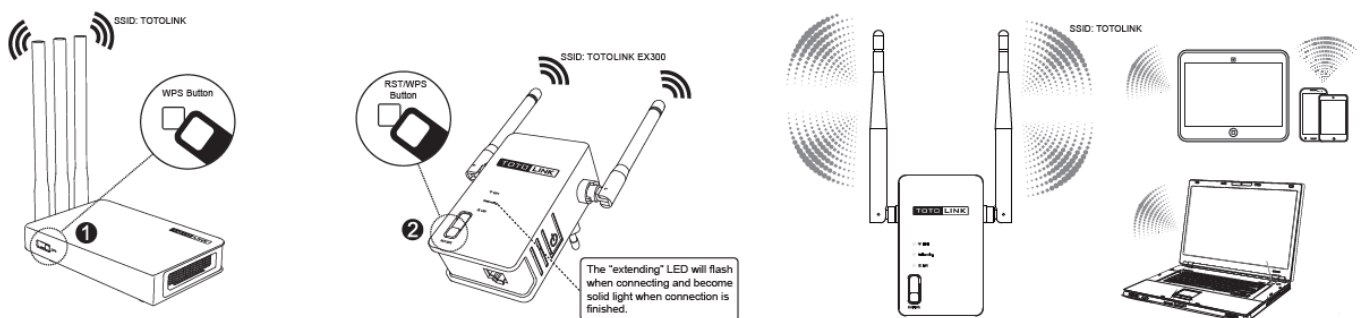
NOTE

EX300's default Network Name (SSID) is TOTOLINK EX300 (no encryption). It is for setup use only. With a successful repeater connection, this SSID (TOTOLINK EX300) disappears and is converted into the same SSID (with the same encryption) of Router/AP with which you connect EX300. After deployment, connect to this Router/AP's SSID, congratulation, you have extended your WiFi coverage s successfully

Method One Easy Setup by WPS Button

One-click WPS connection makes it easy to extend the coverage of your existing wireless network.

1. Press the WPS button on the router.
2. Press the RST/WPS button on EX300 for about 2~3s (not more than 5s) within 2 minutes
3. A wireless connection is established, and the SSID of EX300 will change into the upper router's SSID (TOTOLINK).



TIPS

You can put EX300 close the router to set up a WPS connection, then unplug it and place it anywhere within the WiFi coverage. EX300 can remember the last connected AP and first connect to it when powered on.

Method Two: Setup via Web Interface

Before following an operation, please make sure you have the SSID and password of the router/AP you need this extender to connect

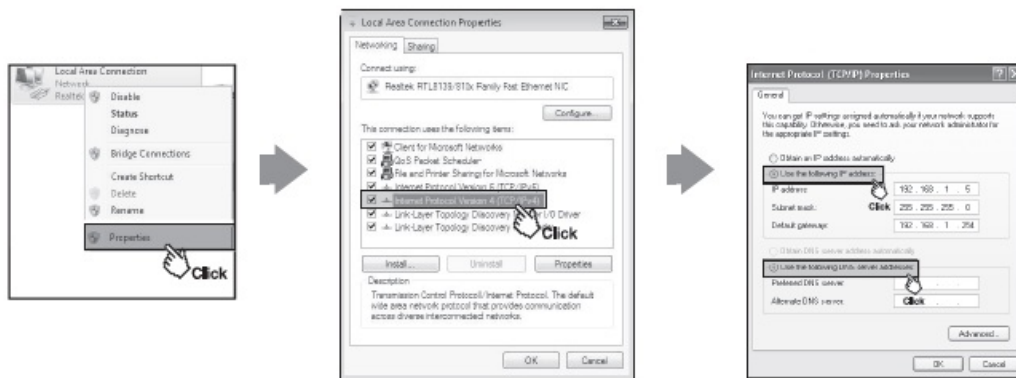
Connect your PC to EX300

Connect to EX300 by Ethernet Cable. Please connect your PC to EX300 by Ethernet cable and then setup the TCP/IP properties.



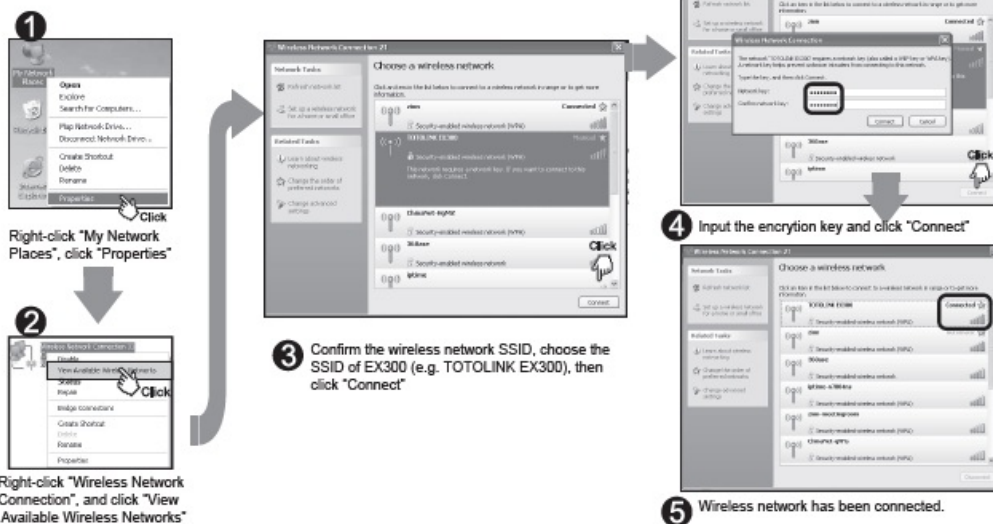
The procedures in Windows 7/ Vista/ XP are similar. Here take the procedures in Windows 7 for example.

1. Click “Start— Control Panel— Network and Internet— Network Connection”, right-click “Local Area Connection”, and choose “Properties”.
2. Double-click “Internet Protocol Version 4 (TCP/IPv4)”
3. Configure the IP address manually:
IP Address: 192.168.1. x (x ranges from 1~253) **Subnet mask:** 255.255.255.0 **Default gateway:** 192.168.1.254
Click OK.



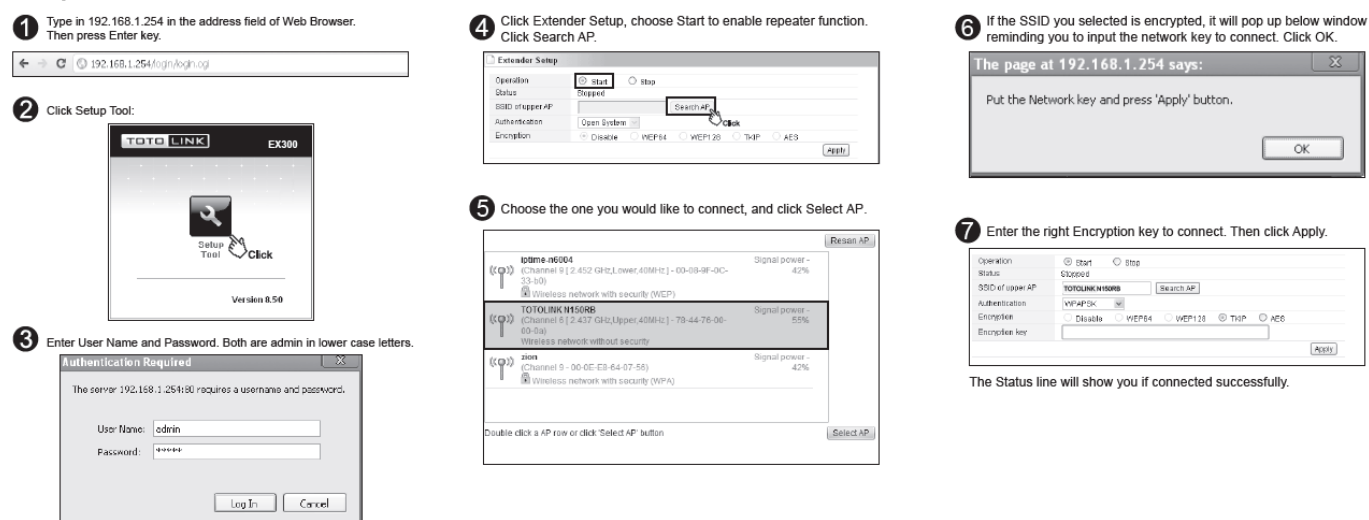
Connect to EX300 by Wireless.

1. Setup the TCP/IP properties on your PC, please configure these parameters follow Part A.
2. Connect to EX300 by your PC's WLAN utility



1. Right-click "My Network Places", click "Properties"
2. Right-click "Wireless Network Connection", and click "View Available Wireless Networks"
3. Confirm the wireless network SSID, choose the SSID of EX300 (e.g. TOTOLINK EX300), then click "Connect"
4. Input the encryption key and click "Connect"
5. The wireless network has been connected.

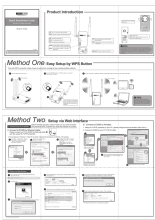
Setup via Web Browser



1. Type in 192.168.1.254 in the address field of Web Browser. Then press Enter key.
2. Click Setup Tool:
3. Enter User Name and Password. Both are admin in lowercase letters.
4. Click Extender Setup, and choose Start to enable the repeater function. Click Search AP.
5. Choose the one you would like to connect, and click Select AP.
6. If the SSID you selected is encrypted, it will pop up below the window reminding you to input the network key to connect. Click OK.
7. Enter the right Encryption key to connect. Then click Apply.

The Status line will show you if connected successfully.

Documents / Resources

	<p>TOTOLINK EX300 Wireless N Range Extender [pdf] Installation Guide EX300 Wireless N Range Extender, EX300, Wireless N Range Extender, Range Extender, Extender</p>
---	--

References

- [User Manual](#)

[Manuals+](#), [Privacy Policy](#)

This website is an independent publication and is neither affiliated with nor endorsed by any of the trademark owners. The "Bluetooth®" word mark and logos are registered trademarks owned by Bluetooth SIG, Inc. The "Wi-Fi®" word mark and logos are registered trademarks owned by the Wi-Fi Alliance. Any use of these marks on this website does not imply any affiliation with or endorsement.