

# A3000RU Samba server instal

## Contents

- [1 A3000RU Samba server instal](#)
- [2 Application introduction:](#)
- [3 Diagram](#)
- [4 Set up steps](#)
- [5 DOWNLOAD](#)
- [6 Related Posts](#)

## A3000RU Samba server instal

It is suitable for: A3000RU

### Application introduction:

A3000RU support file sharing function, the mobile storage devices (such as U disk, mobile hard disk, etc.) connected to the router's USB interface, LAN terminal equipment can access the resources of mobile storage devices, easy file sharing

### Diagram



## Set up steps

### STEP-1

Stores the resource you want to share with others into the USB flash disk or hard drive before you plug it into the USB port of the router.

### STEP-2

2-1. Connect your computer to the router by cable or wireless, then login the router by entering <http://192.168.0.1> into the address bar of your browser.





**Note:** The default access address varies depending on the actual situation. Please find it on the bottom label of the product.

2-2. User Name and Password are required, by default both are **admin** in lowercase letter. Click **LOGIN**.

# USER LOGIN

[Forget Password?](#)

 User Name

 Password

LOGIN

## STEP-3:

Enable the SAMBA Server. Default account password **samba**.

TOTO LINK

The Smartest Network Device

A3000RU (Firmware V5.9c.680)

Easy Setup

Language

Help

System Status

Operation Mode

Network

5G Wireless

2.4G Wireless

QoS

Firewall

USB Storage

Management

USB Storage

This page is used to set DLNA and SAMBA Server.

DLNA Server

Enable

SAMBA Server

Enable

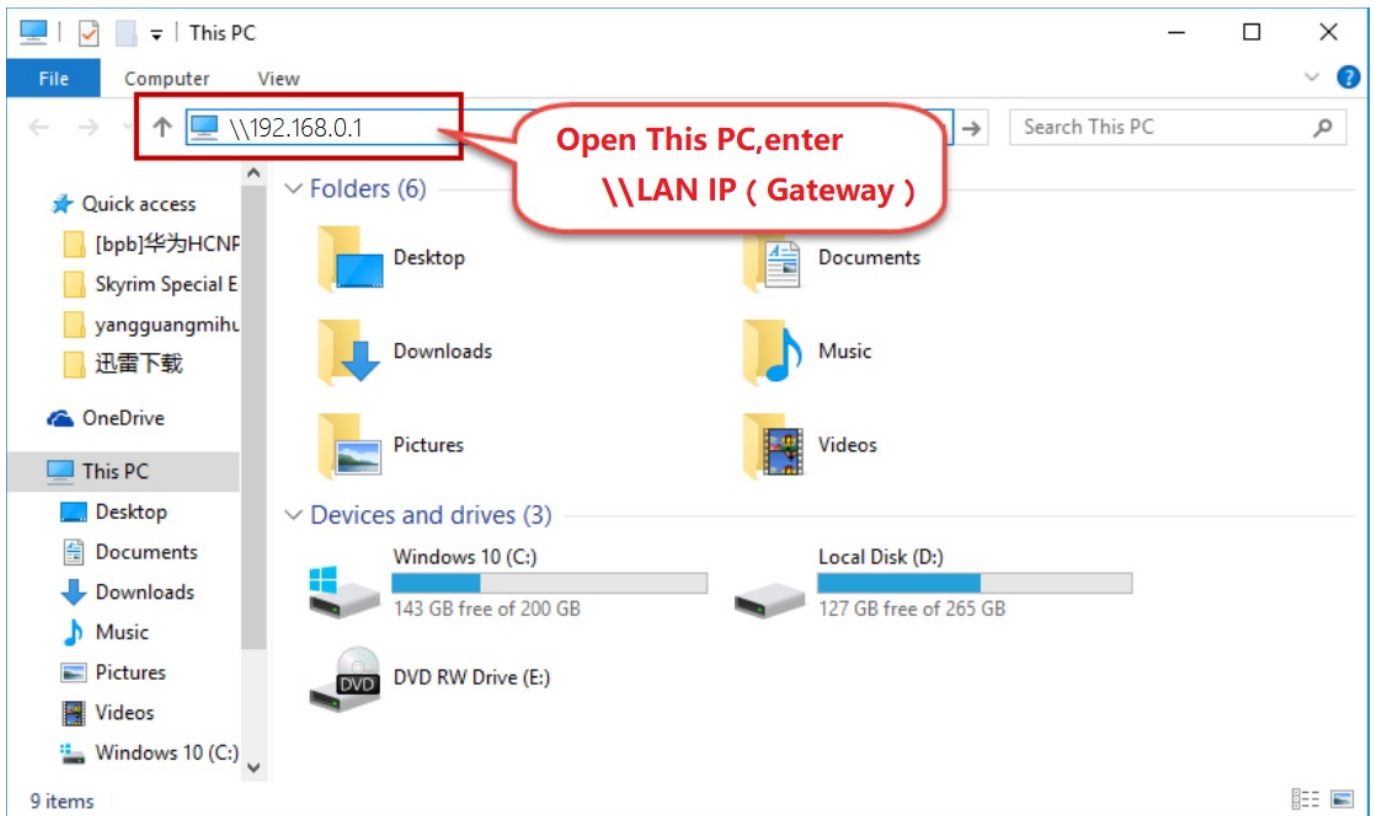
Default account password,samba

Apply

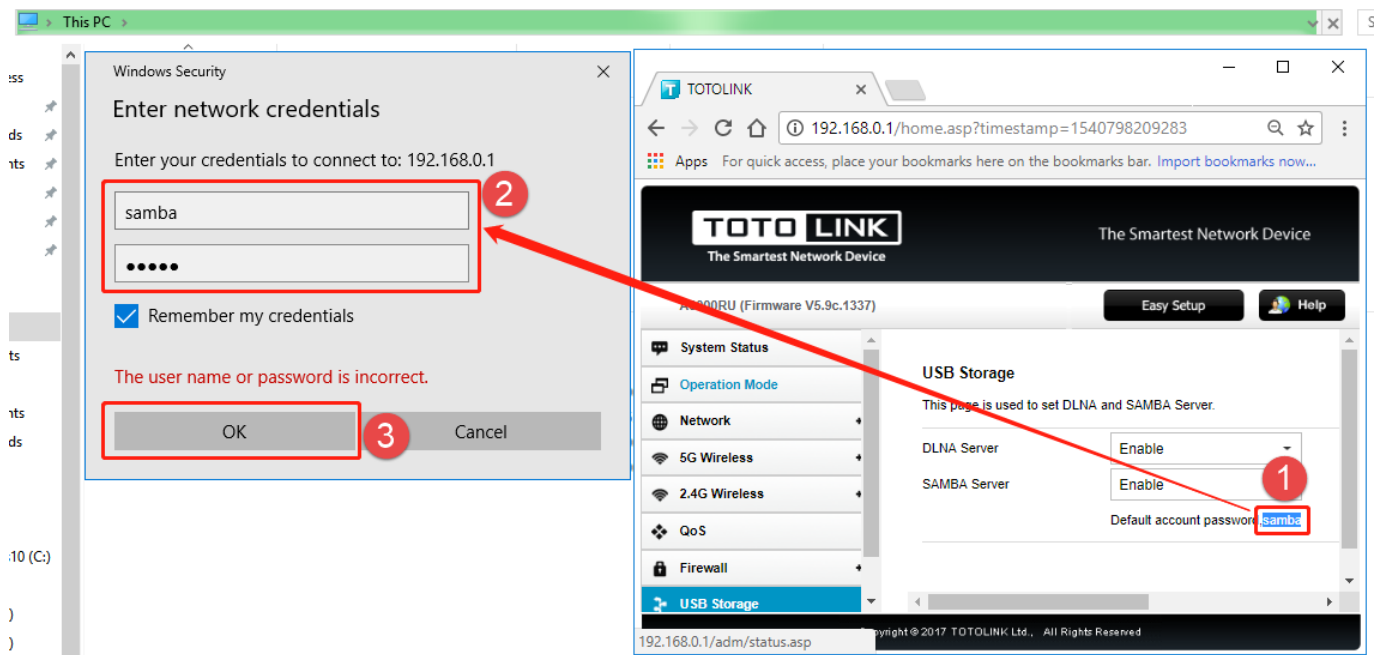
Copyright © 2017 TOTOLINK Ltd., All Rights Reserved

## STEP-4: Access the Samba server from the client.

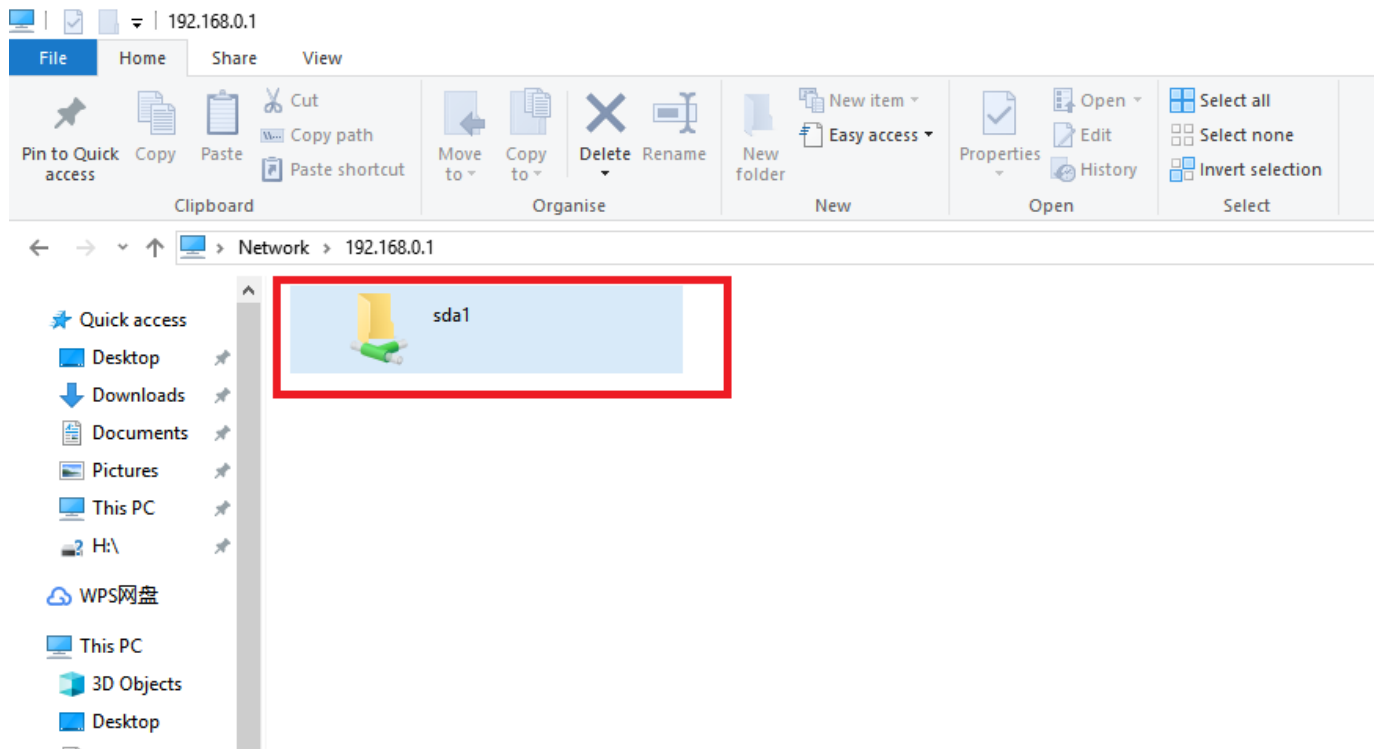
4-1. Open This PC and type \\192.168.0.1 in the input box. And press the Enter key



4-2. In this page will pop up a certification box, enter the default name and password that you have set before, and then click **OK**.



4-3. On this page, you will see the attached hard disk information. Click on this hard drive.



4-4. you can and good friends to share the resources inside the hard disk.

**Notes:**

If the Samba server can't take effect immediately, please wait a few minutes. Or restart the service by clicking stop/start button.

**DOWNLOAD**

A3000RU Samba server instal – [[Download PDF](#)]

