

# A2004NS Samba server instal

## Contents

- [1 A2004NS Samba server instal](#)
- [2 Diagram](#)
- [3 DOWNLOAD](#)
- [4 Related Posts](#)

## A2004NS Samba server instal

It is suitable for: **A2004NS** / **A5004NS** / **A6004NS**

### How to access A2004NS USB shared U disk video, pictures?

**Application introduction:** A2004NS support file sharing function, the mobile storage devices (such as U disk, mobile hard disk, etc.) connected to the router's USB interface, LAN terminal equipment can access the resources of mobile storage devices, easy file sharing.

### Diagram



### Set up steps

**STEP-1: Check if the hard disk has a successful access router**

TOTOLINK A2004NS x

192.168.1.1/cgi-bin/timepro.cgi?tmnu=main\_frame&smenu=main\_frame

**TOTO LINK** The Smartest Network Device A2004NS Refresh Save

**Config Explorer**

- Basic Setup
  - Status Summary
  - Internet Setup
  - Wireless Setup(2.4GHz)
  - Wireless Setup(5GHz)
  - Firmware Upgrade
- Advanced Setup
  - Network
    - Wireless(2.4GHz)
    - Wireless(5GHz)
  - NAT/Routing
  - Firewall
  - Utility
  - Traffic
  - System
  - USB Storage
    - Device Mgmt**
  - Basic App
    - Service Setup
    - Connected User

**Device Mgmt**

**USB Status**

Device Name	Class	Status
USB Device1	Storage Device	Connected Remove

**USB Storage Information**

Device Name	Directory	File System	Total	Free
USB Device1	/HDD1	VFAT	14.4 GB	9.4 GB

Check if the hard disk has a successful access router

## STEP-2: Samba server build

2-1. Go to the router interface and select **Basic App—Service Setup — Windows File Sharing (SAMBA)**.

TOTOLINK A2004NS x

不安全 | 192.168.1.1/cgi-bin/timepro.cgi?tmnu=main\_frame&smenu=main\_frame

**TOTO LINK** The Smartest Network Device A2004NS Refresh Save

**Config Explorer**

- Basic Setup
  - Status Summary
  - Internet Setup
  - Wireless Setup(2.4GHz)
  - Wireless Setup(5GHz)
  - Firmware Upgrade
- Advanced Setup
  - Network
    - Wireless(2.4GHz)
    - Wireless(5GHz)
  - NAT/Routing
  - Firewall
  - Utility
  - Traffic
  - System
  - USB Storage
    - Device Mgmt
  - Basic App**
    - Service Setup**
    - Connected User

**Service Setup**

Service	Status	Address
FTP Service	Running	ftp://192.168.1.1
<b>Windows File Sharing(SAMBA)</b>	<b>Stopped</b>	
URL Service	Stopped	
Network Printer Server	Stopped(No Printer)	http://192.168.1.1:631/printers/TOTOLINK_Printer

**Windows File Sharing(SAMBA)**

Service ☐ Start ☒ Stop

Server Name  Workgroup

Property  User ID  Password  ☐ Unhide

User Configuration    ☐ Unhide

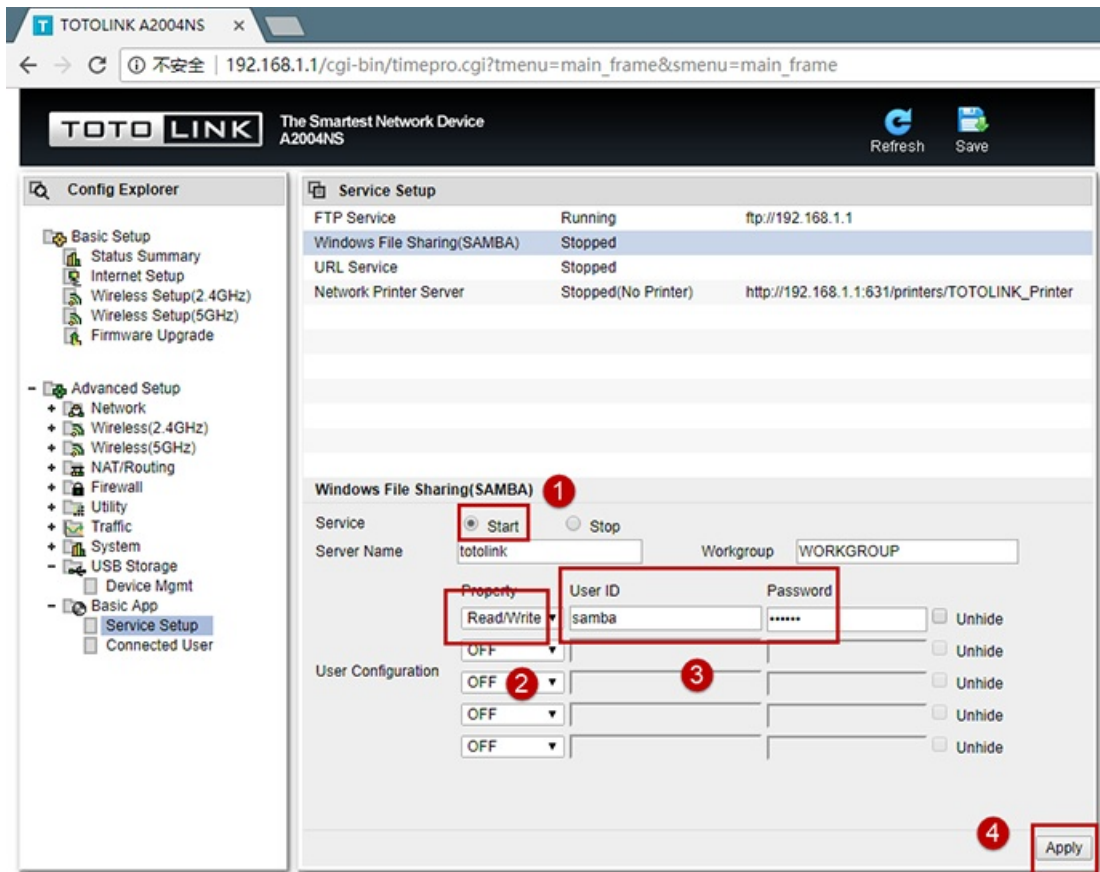
☐ Unhide

☐ Unhide

☐ Unhide

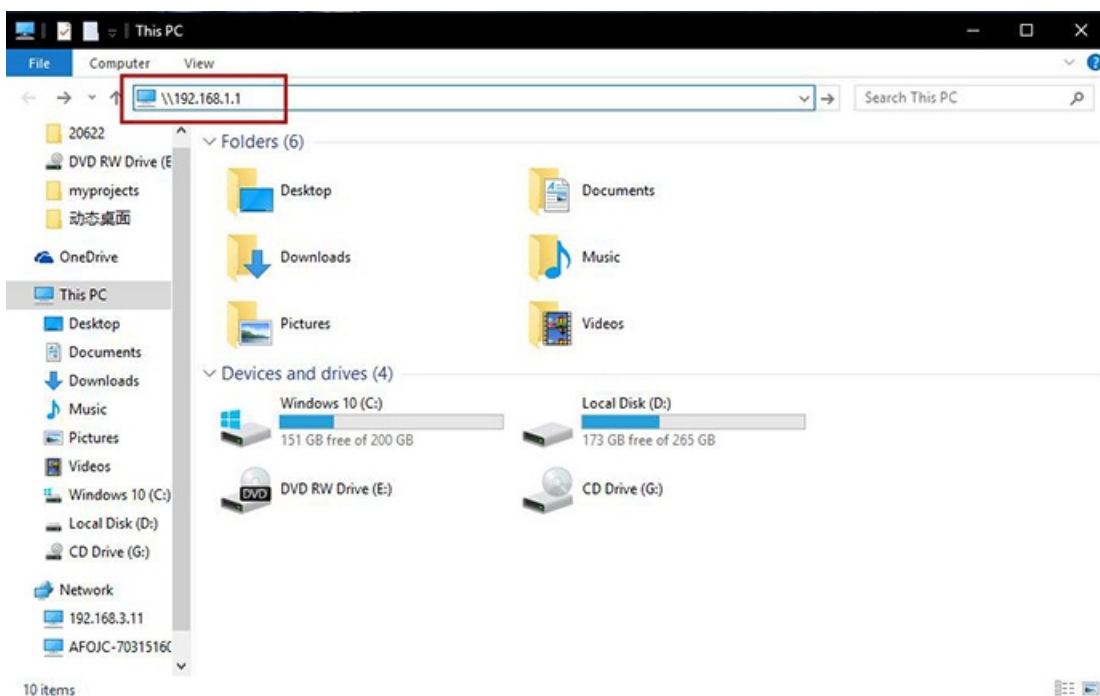
Apply

**2-2. Start the server, select **Read / Write**, enter the **user ID** and **Password**. click **Apply**.** The Samba server has been built.

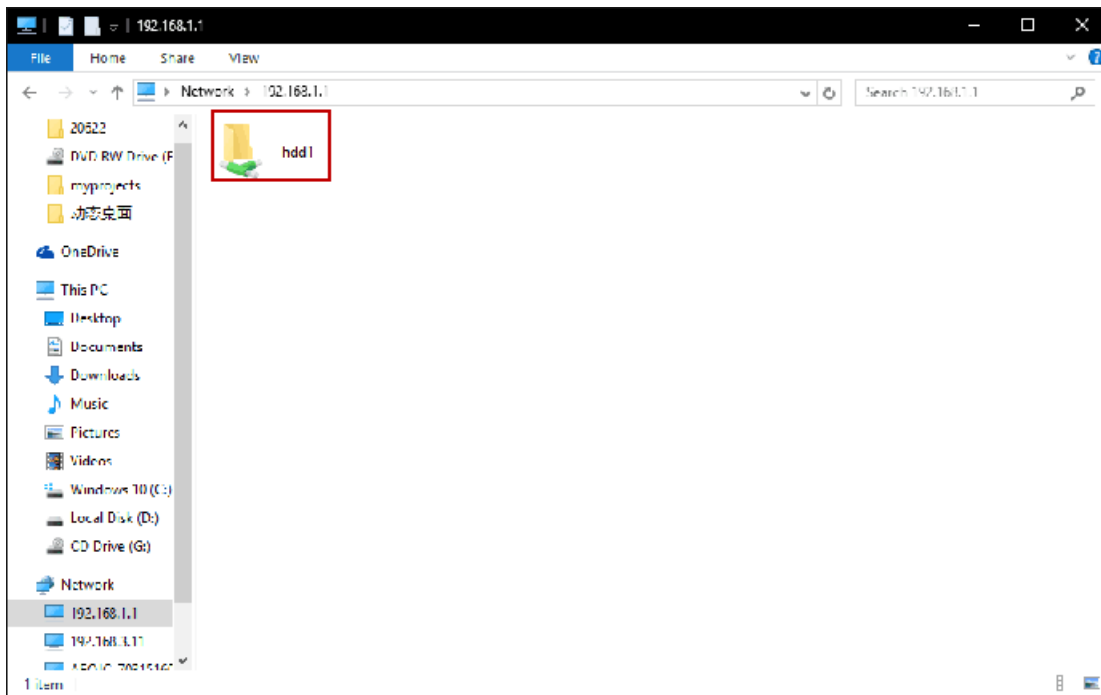


**STEP-3: Access the Samba server from the client.**

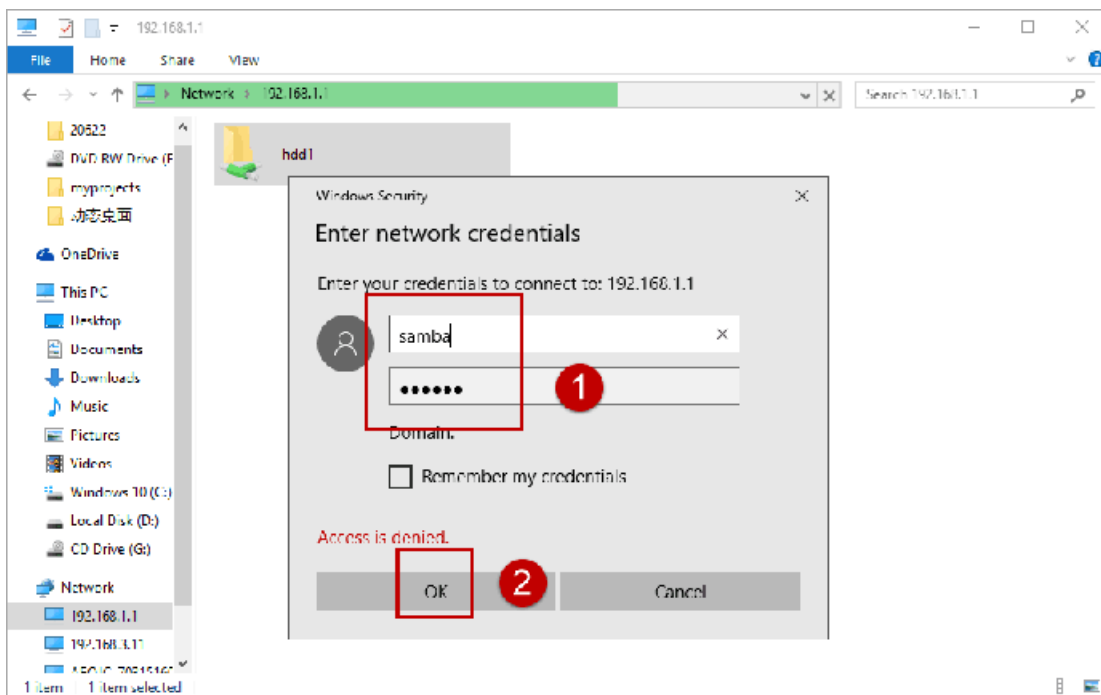
3-1. Open This PC and type \\ 192.168.1.1 in the input box. And press the Enter key



3-2. On this page, you will see the attached hard disk information. Click on this hard drive.



3-3. In this page will pop up a certification box, you need to enter the samba server set up, **user ID** and **Password**. At this point, you can and good friends to share the resources inside the hard disk.



---

## DOWNLOAD

A2004NS Samba server instal -[ [Download PDF](#) ]

---

---

Manuals+.