

[Home](#) » [Support](#) » [A1004, A2004NS, A5004NS, A6004NS wireless SSID password modification setting](#) 

# A1004, A2004NS, A5004NS, A6004NS wireless SSID password modification setting

## Contents

- [1 A1004, A2004NS, A5004NS, A6004NS wireless SSID password modification setting](#)
- [2 Set up steps](#)
- [3 Questions and Answers](#)
- [4 DOWNLOAD](#)
- [5 Related Posts](#)

## A1004, A2004NS, A5004NS, A6004NS wireless SSID password modification setting

It is suitable for: **A1004 / A2004NS / A5004NS / A6004NS**

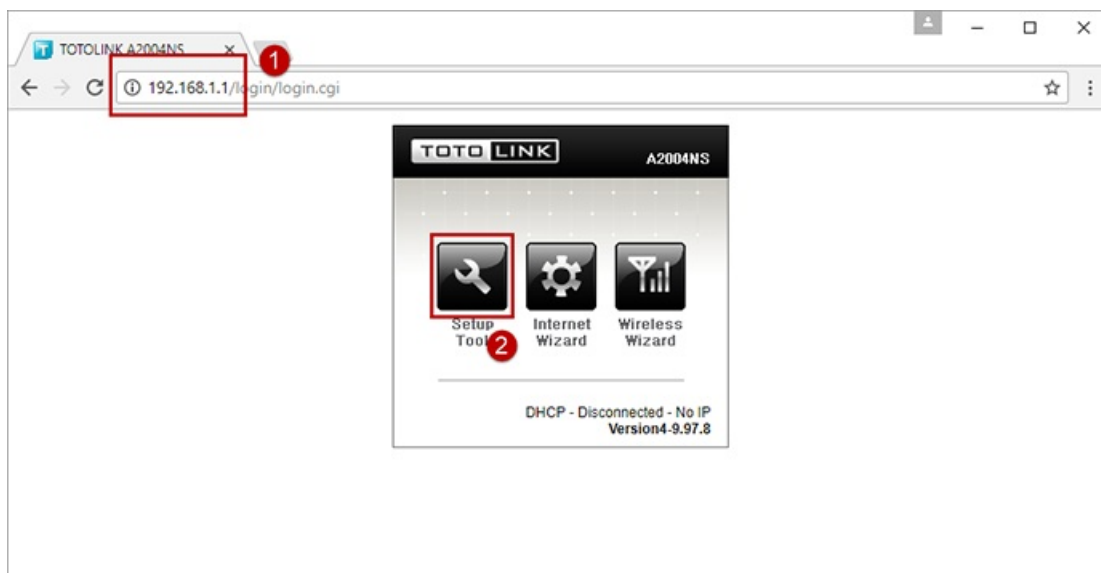
**Application introduction** Wireless signals generally refer to Wi-Fi, wireless SSID and wireless password is the wireless terminal to connect the router to the Internet the most important two information. The actual use of the process, if there is no connection on the wireless, forget the wireless password, you need to view or modify the signal SSID and password.

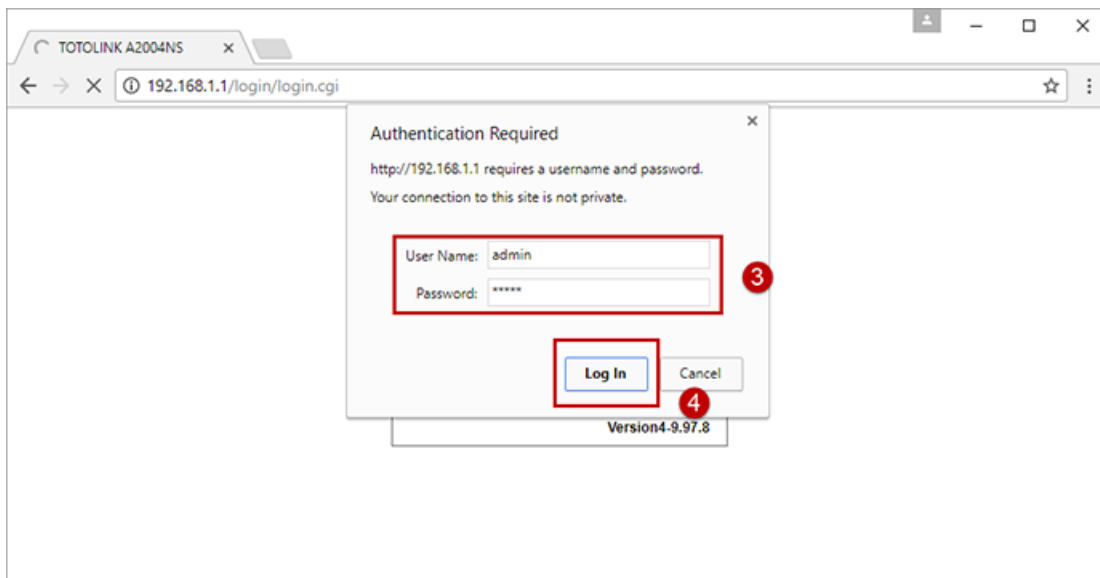
## Set up steps

### STEP-1: Enter the setup interface

Open the browser, clear the address bar, enter **192.168.1.1**, select Setup Tool.fill in the administrator account and password (default **admin admin**), click Login, as follows:

**Note:** The default access address varies depending on the actual situation. Please find it on the bottom label of the product.

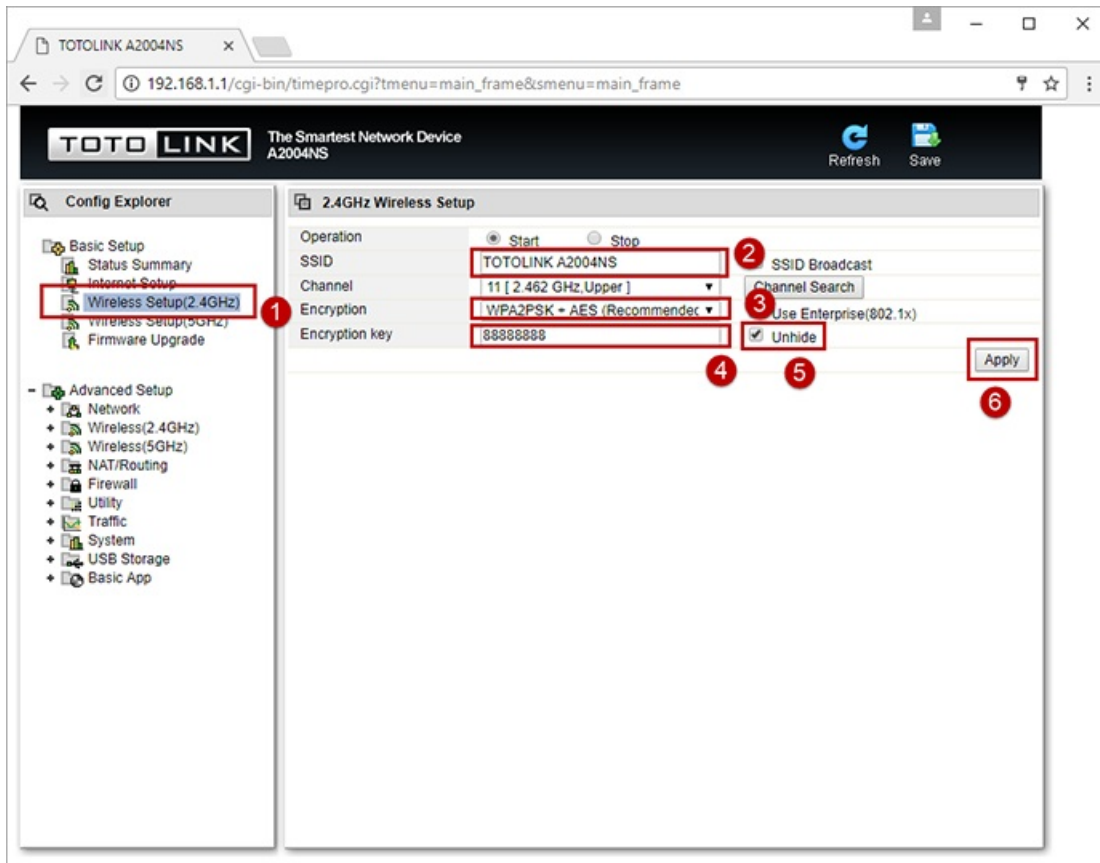




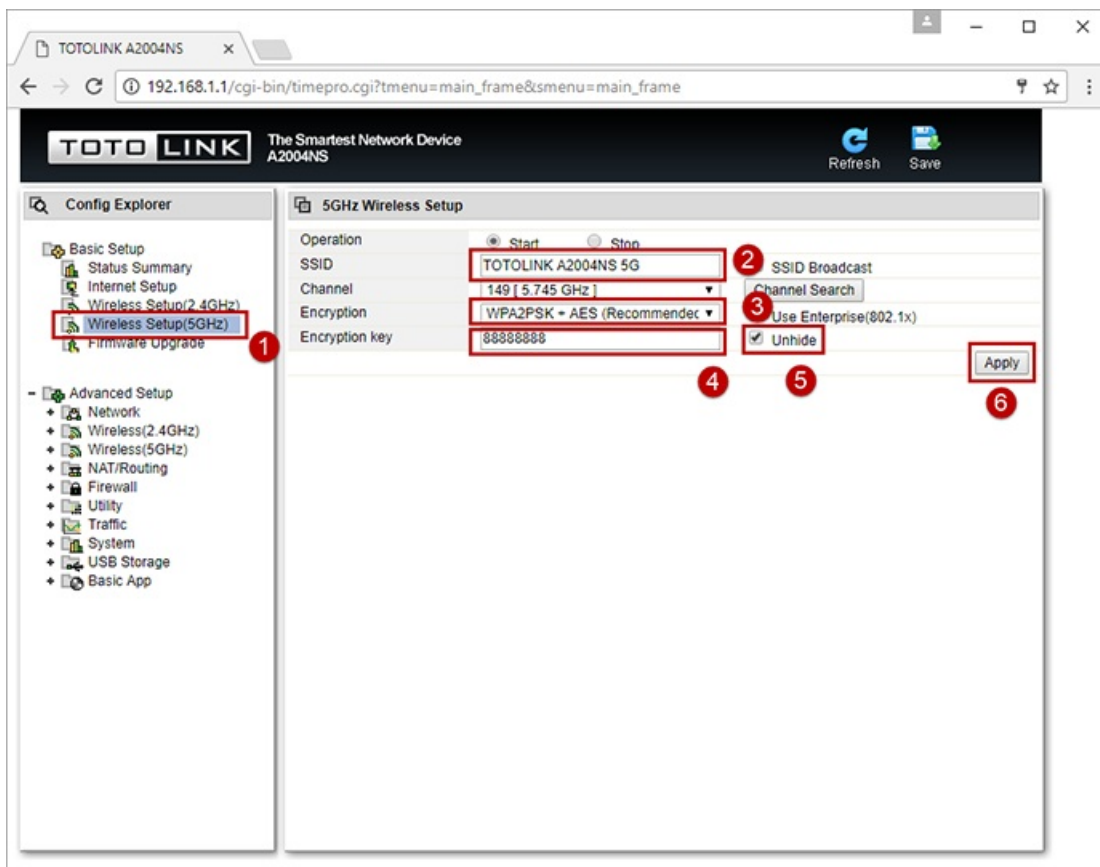
## STEP-2: View or modify the wireless parameters

### 2-1. Check or modify in Easy Setup page

Click **Wireless Setup(2.4GHz)**, Modify the SSID according to your preference. Select encryption method (default encryption is recommended) Enter the password, if you need to clear the password, you can choose **Unhide** click **Apply**.

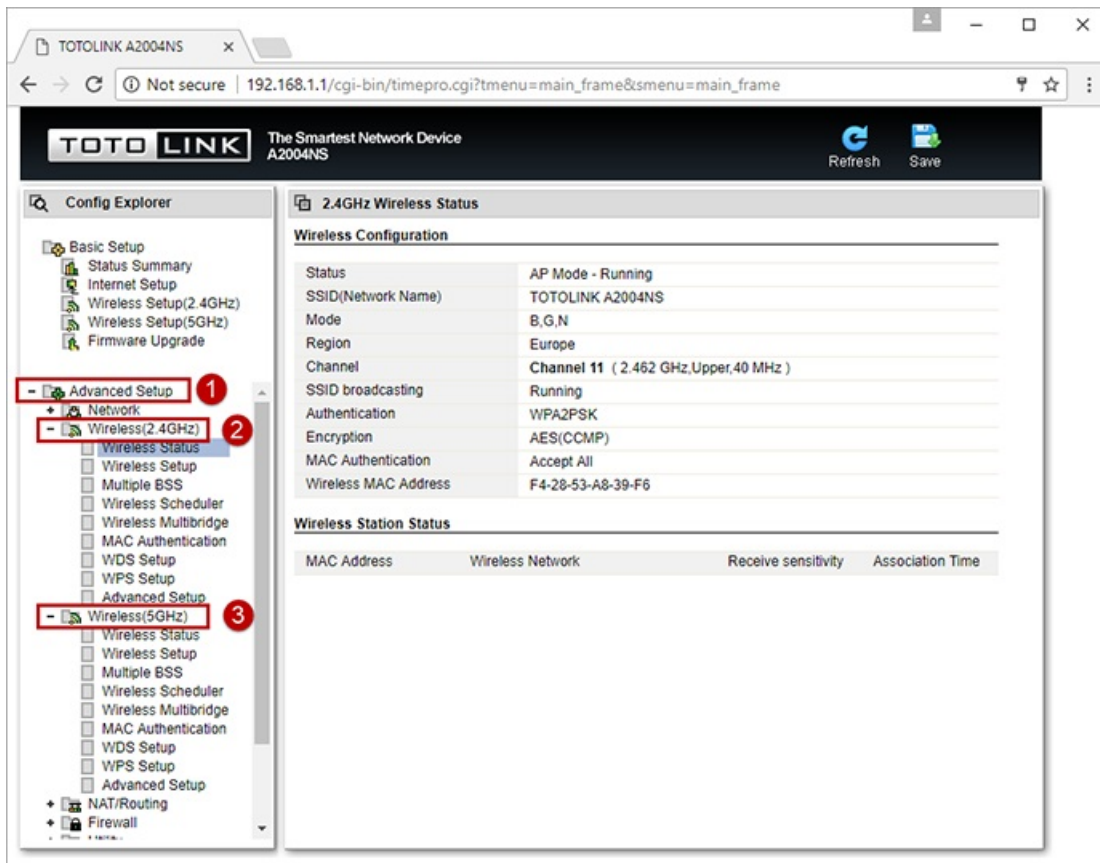


Click **Wireless Setup(5GHz)**, Modify the SSID according to your preference. Select encryption method (default encryption is recommended) Enter the password, if you need to clear the password, you can choose **Unhide** click **Apply**.



## 2-2. Check and modify In the Advanced Setup.

If you need to set more wireless parameters, you need to enter Advanced Setup — **Wireless (2.4GHz)** or **Advanced Setup — Wireless (5GHz)**. And then select the parameters you need to change in the pop-up submenu.



## Questions and Answers

**Q1: After setting up the wireless signal, need to restart the router?**

A: No need. After setting the parameters, wait a few seconds for the configuration to take effect.

---

## DOWNLOAD

A1004, A2004NS, A5004NS, A6004NS wireless SSID password modification setting – [[Download PDF](#)]

---