



TotalPond 36138 Color Changing Light Set With Remote Control User Manual

[Home](#) » [TotalPond](#) » TotalPond 36138 Color Changing Light Set With Remote Control User Manual 



COLOR CHANGING
LIGHT SET
WITH REMOTE CONTROL





Thank you for choosing TotalPond® BEFORE RETURNING TO the STORE
Contact Customer Care: 1-888-412-6001

Questions, problems, missing parts?



1-888-412-6001



customercare@totalpond.com



Monday – Friday

Visit totalpond.com for a step by step guide and videos

Contents

- [1 WARNINGS AND CAUTIONS](#)
- [2 PACKAGE CONTENTS](#)
- [3 PREPARATION](#)
- [4 OPERATION INSTRUCTIONS](#)
- [5 LIGHT PERFORMANCE](#)
- [6 MAINTENANCE](#)
- [7 TROUBLESHOOTING](#)
- [8 REPLACEMENT PARTS](#)
- [9 Documents / Resources](#)
 - [9.1 References](#)
- [10 Related Posts](#)

WARNINGS AND CAUTIONS

IMPORTANT SAFETY INFORMATION

Please read these instructions carefully prior to starting up the unit! The water system on which the operation of this product is based requires utmost care and maintenance, possibly also the use of chemicals, in order to prevent and keep the occurrence of micro-organisms and harmful bacteria, especially legionellae that are responsible for legionnaire's disease, under control. Non-observance of this information about correct maintenance and care can entail the spreading of harmful bacteria. Due to the fact that for decorative purposes, water nozzles distribute water in the air, water droplets containing harmful bacteria can enter your lungs and cause life-threatening diseases.

It is the responsibility of the owner of the water system and its attendant units to ensure their maintenance and care in compliance with the laws, directives, and instructions laid down for this purpose. In order to avert harmful contamination, we urgently recommend the user to ensure cleaning and care of the water system and the water feature including the nozzle, and to take all necessary measures to maintain the technical units, such as pumps,

tubing, connectors, underwater lighting, and nozzles to keep them in functional order in line with safety aspects. However, the maintenance and care obligation is not limited to the technical products supplied but encompasses the entire system.

PLEASE CALL CUSTOMER CARE BEFORE RETURNING THE ITEM TO THE STORE: 1-888-412-6001

We also recommend the owner to keep records of the dates when maintenance and care were carried out and to document all water tests made in conjunction with the water feature. The owner is solely responsible for guaranteeing the safety of the water feature. Use or maintenance of the units sold and the system are beyond GeoGlobal Partner's influence. GeoGlobal Partners can only be held liable for manufacturing faults of TotalPond® units.

WARNING

- To reduce the risk of electrical shock, connect only to a properly grounded, grounding-type receptacle.
- Do not exceed the voltage shown on the transformer.
- Do not submerge the transformer, sensor, and control box.
- To reduce the risk of fire or injury, keep the lamp away from materials that may burn.
- Always disconnect the light from the power source before beginning any maintenance or work on the light.
- Inspect the cord for damage before installation and/or maintenance. Replace the entire light/transformer assembly if the damage is found.

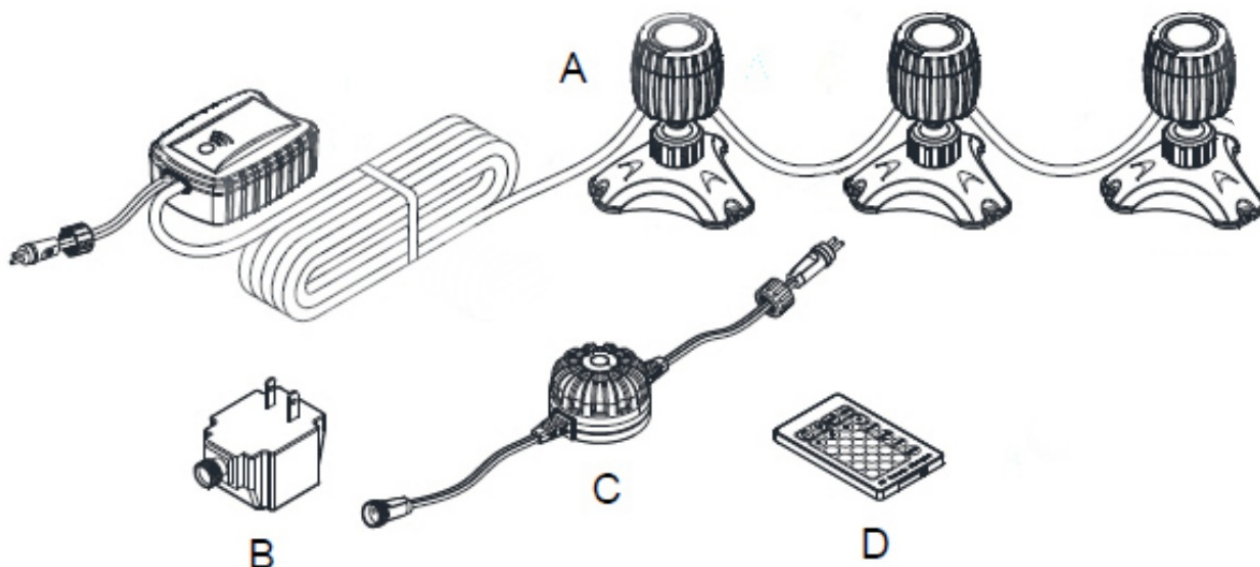
CAUTION

- Use a proper power source as indicated on the transformer label.
- Keep the cord away from high temperatures or other heat sources.
- Do not lift the light or the transformer by its power cord.
- This light assembly is not intended for use in swimming pools or hot tubs.

PACKAGE CONTENTS

Part	Description	Qty
A	Lights with control box	1
B	Transformer	1
C	Dawn to Dusk Sensor	1
D	Remote*	1

*Requires 1 CR2025 Battery (included)



VISIT WWW.TOTALPOND.COM FOR INFORMATION AND TIPS.

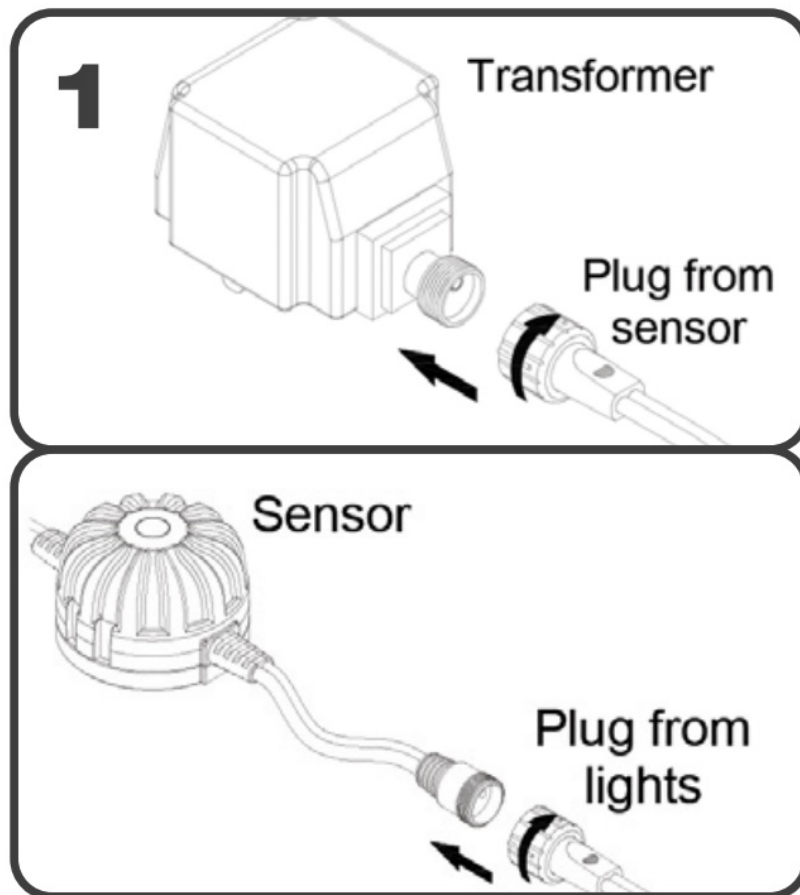
PREPARATION

Before beginning the assembly or operation of the product, make sure all parts are present. Compare parts with package contents list and diagram. If any part is missing or damaged, do not attempt to assemble, install or operate the product. Contact Customer Care for replacement parts.

- Estimated assembly time: 5 minutes.
- No tools are required for assembly.

OPERATION INSTRUCTIONS

Step 1. Connect the sensor to the transformer and the sensor to the lights by pushing the plug into the sensor socket and hand tightening the nut around the plug and socket to secure.



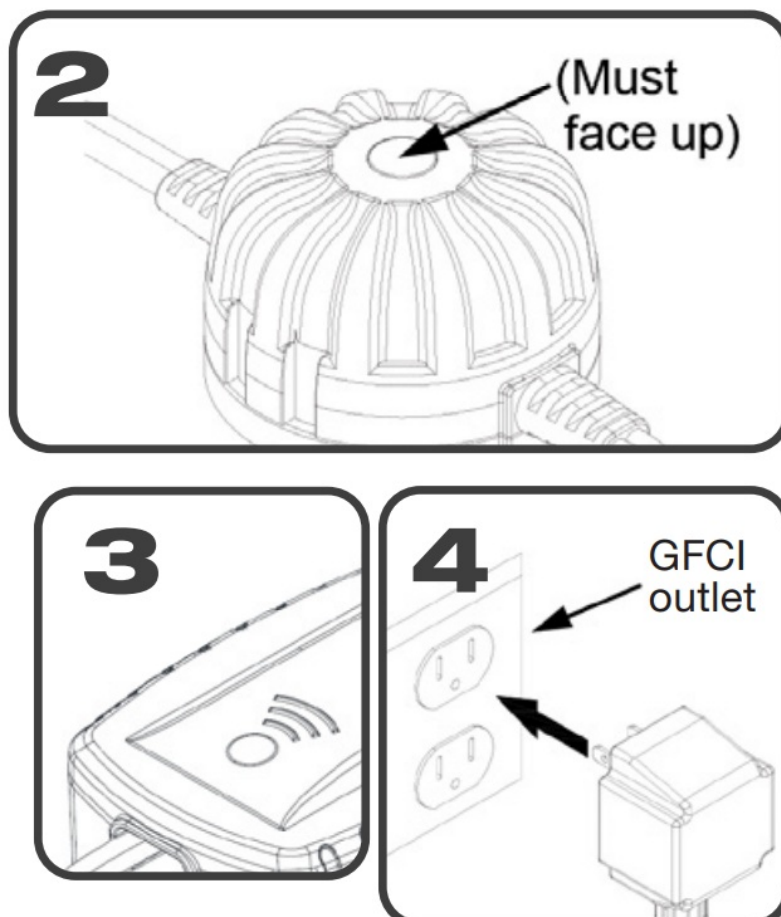
Step 2. Place the lights in or out of the water. Make sure that the transformer and sensor are not submerged and the sensor is facing up.

NOTE: At night, the lights will automatically turn on. At sunrise, they will automatically turn off.

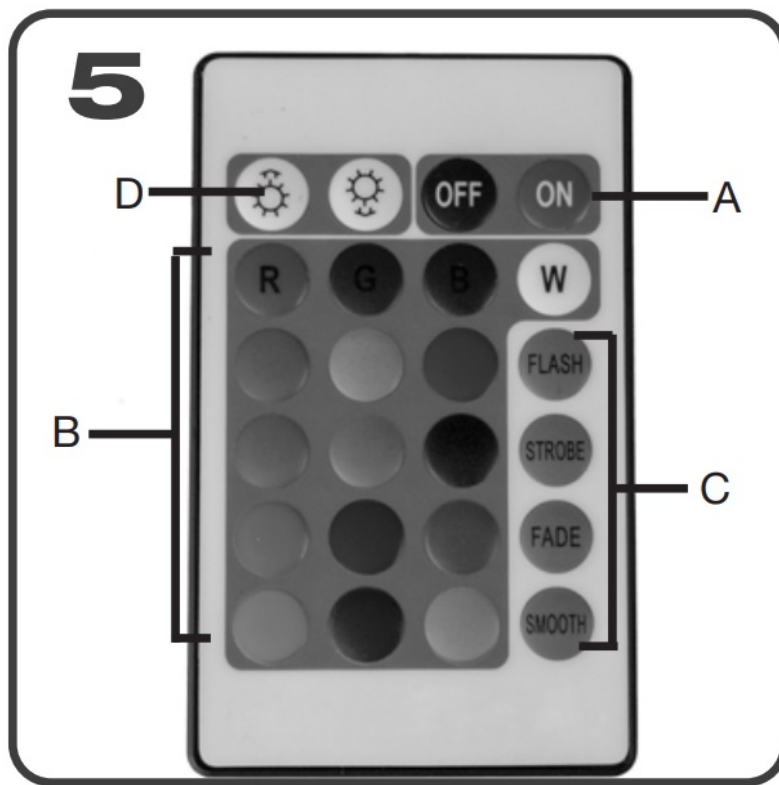
Step 3. Place the control box in a visible and open space

NOTE: the control box cannot be submerged or withstand heavy rainfall.

Step 4. Plug the transformer into a properly grounded electrical outlet.



Step 5. A is the power on and off buttons.* B is the solid color option. C is the effects buttons.



When solid color is chosen, D buttons can brighten the color or dim the color. When effects are chosen, D buttons can increase or decrease the speed.

*The remote sensor will time out during periods of inactivity. If your selection is not being read, simply press the “strobe” and “fade” buttons simultaneously before making your next selection.

LIGHT PERFORMANCE

Power Consumption

Power: 2.5 watts per light

Voltage: 12 volts

Cord length

0.5 ft. to the control box

12 ft. cord from the control box to first light

4 ft. cord between lights

MAINTENANCE

- The Color Changing Light Set may require cleaning from time to time for optimal performance.
- Before cleaning, always disconnect from the power source.
- Use a soft cloth or brush and warm water to clean parts.
- Reconnect to the power source when you are finished.

TROUBLESHOOTING

- Check to make sure you have turned on the lights using the remote.
- Check to make sure the plastic tab has been removed from the remote.
- The control box will time out during periods of inactivity. If your selection is not being read, simply press the “strobe” and “fade” buttons simultaneously before making your next section.
- Make sure to replace the 1 CR2025 battery every 6 months.
- Make sure the remote is within range of the control box.

- If lights fail to illuminate, check that lights are getting power by testing another appliance in the same power outlet.
- The light is designed to turn on when it gets dark, and turn off when it gets light. To activate the light during daylight hours, cover the sensor.
- If lights do not turn off during the daytime, check the sensor. Make sure the sensor faces up and is not covered by dirt or debris.

For more information on product maintenance and maintenance videos, visit www.totalpond.com

REPLACEMENT PARTS

For replacement parts, contact Customer Care, Monday – Friday:

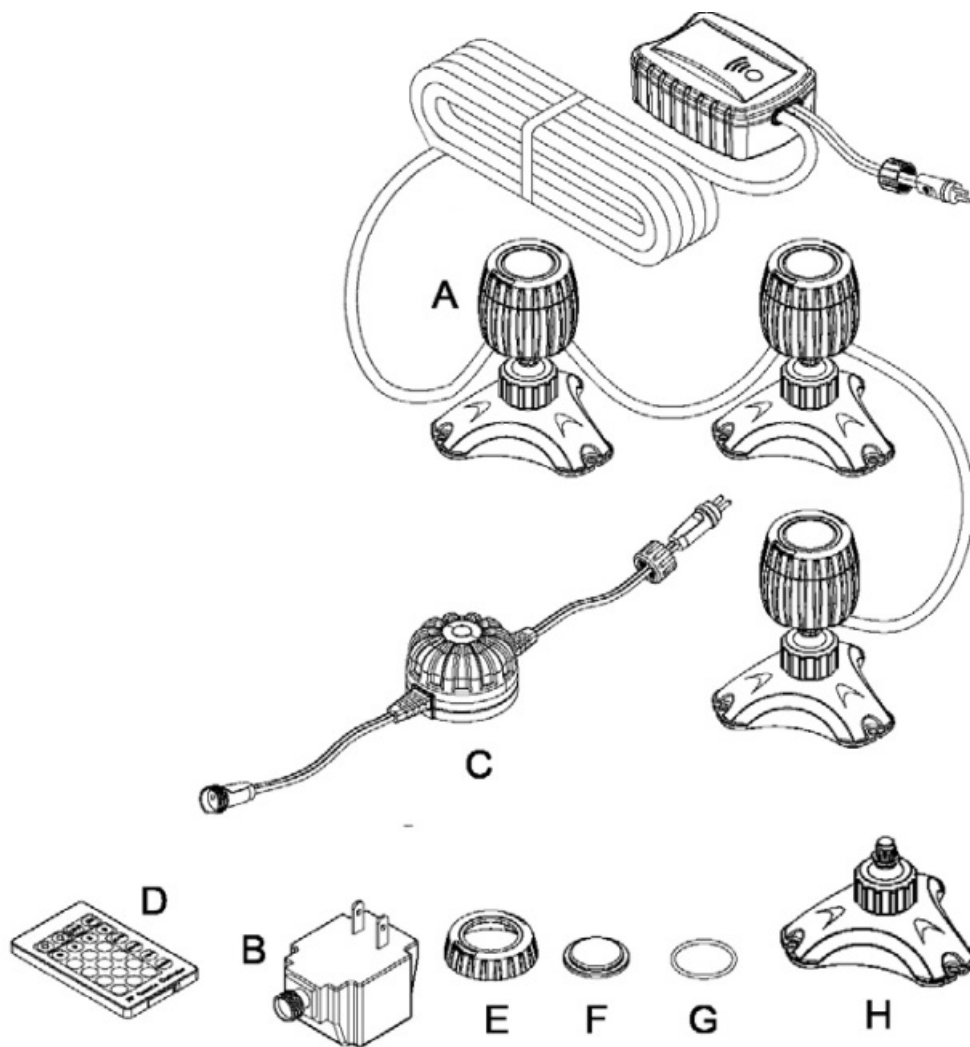


1-888-412-6001



customercare@totalpond.com

A	Lights with control box
B	Transformer
C	Dawn to Dusk sensor
D	Remote
E	Locking ring
F	Lens
G	O-ring
H	Base assembly



1 YEAR WARRANTY

www.totalpond.com/register

Date of purchase: ____/____/____

Item number _____

Questions? Call Customer Care at 1-888-412-6001

LIMITED WARRANTY

All pumps and electrical products are warranted to the user against defective material and workmanship, under normal working conditions. This warranty period begins on the date of purchase by the original purchaser.

APPLICATION

The warranty covers only properly installed and maintained units. Any damage or modification to the cord or to the unit will terminate the warranty. Pump warranty is limited to applications pumping fresh water in a pond or fountain only. Other liquid applications or extreme temperature uses must be approved in writing by the manufacturer. Receipt and product date code are required for warranty claims.

WARRANTY CLAIM

Warranty claims must be made by calling Customer Care (at 1-888-412-6001). If the item is determined to be defective, you will be given the authorization to return the defective part(s), freight pre-paid, along with proof of purchase.

DISPOSITION

The manufacturer will make a good faith effort for prompt disposition regarding all warranty claims. Returned products will be inspected to determine the cause of failure before the warranty is applied. The warranty does not cover any costs associated with the shipping, handling, installation or removal of products or parts subject to this warranty. For products damaged in transit, a claim should be filed with the carrier.

DISCLAIMER

Any oral statements made about the product by the seller, the manufacturer, the representatives, or any other parties do not constitute warranties, should not be relied upon by the user, and are not part of the contract for sale. The seller's and manufacturer's only obligation, and buyer's only remedy shall be for the manufacturer to either replace and/or repair at the manufacturer's sole discretion, the product as described above. Neither seller nor the manufacturer shall be liable for injury, loss or damages for lost profits, lost sales, injury to person or property, or any other incidental or consequential loss arising from any cause whatsoever, no matter whether based upon warranty, contract, negligence or another misuse, and the buyer and user agree that no other remedy shall be available to them. Before using, the buyer and user shall determine the suitability of the product for the intended use, and assume all risk and liability whatsoever in connection therewith. The warranty and remedy described in this limited warranty is an exclusive warranty and remedy in lieu of any other warranty or remedy expressed or implied. All other warranties and remedies are hereby expressly excluded, including but not limited to any implied warranty or merchantability of fitness for any particular purpose. This warranty gives the buyer and user-specific legal rights, and the buyer and user may also have other rights which vary from state to state. Some states do not allow exclusions or limitations of incidental or consequential damages, so the above limitations or exclusions may not apply to you.

Show us your ponds and projects! Share with us



TotalPond®


Need help?

Call Customer Care at 1-888-412-6001 (US) or visit www.totalpond.com

©GeoGlobal Partners, LLC.

TotalPond is a registered trademark of GeoGlobal Partners, LLC

Documents / Resources

	TotalPond 36138 Color Changing Light Set With Remote Control [pdf] User Manual 36138, Color Changing Light Set With Remote Control, Color Changing Light Set, Changing Light Set, Light Set
---	--

References

- [TotalPond Water Gardening](#)
- [TotalPond Water Gardening](#)
- [Register – TotalPond](#)