

Total Green MFG WG1A Time Delay Kit Instruction Manual

July 2,
2025



Contents [[hide](#)]

1 TIME DELAY KIT

1.1 (WG1A Forced Air Systems)

2 Documents / Resources

2.1 References

TIME DELAY KIT

(WG1A Forced Air Systems)

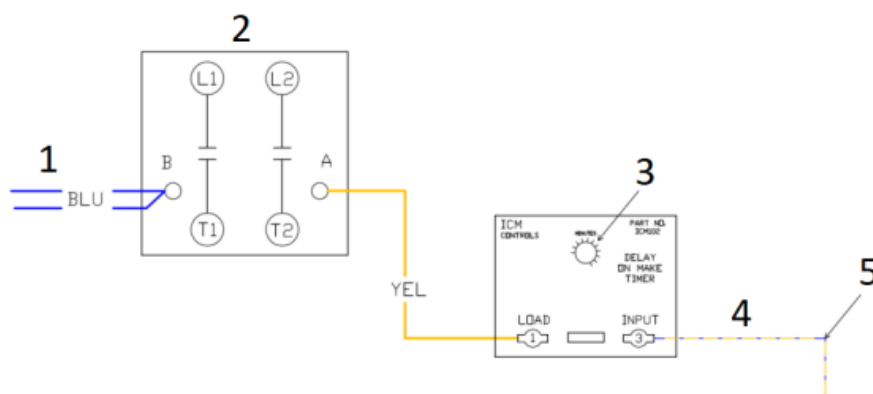


Figure 1. Delay Timer Wiring Diagram

2. COMPRESSOR CONTACTOR
3. SET TIMER FOR 2 MINUTES
4. WIRE ORIGINALLY GOING TO THE A TERMINAL OF THE CONTACTOR
5. WIRE COLOR TENDS TO BE YEL OR YEL/BLU

Some WG1A single stage units, those with analog controls, may experience high head pressure or low suction at start up. This is due to the slow ramp up rate some blowers equipped with ECM motors may experience.

This is not an indication of a faulty ECM motor nor an indication of equipment fault. The slow ramp up rate of the blower is purposely programmed into the ECM blower controller. Its purpose is to allow a standard air to air heat pump or air conditioner to achieve AHU or cased coil temperature before applying the full set CFM output.

This slow ramp up is not required of Waterless Geothermal equipment as near full capacity is achieved at start up. The slow ramp up rate may cause nuisance lock outs or, possibly a misdiagnosis of a faulty blower motor.

To correct this, Total Green MFG. is providing a delay on make timer kit to be field installed as needed in the compressor unit. Following the supplied wiring diagram and setting the timer for a 2 minute delay allows time for the blower to ramp up before starting the compressor.

Please note that this timer kit only applies to the WG1A model line. All other Waterless Geothermal units have a PLC control which already prevents the issue described above.

Please contact Total Green Mfg. @ [419-678-2032](tel:419-678-2032) with more information if needed.

Documents / Resources



[Total Green MFG WG1A Time Delay Kit \[pdf\]](#) Instruction Manual WG1A, WG1A Time Delay Kit, WG1A, Time Delay Kit, Delay Kit

References

- [User Manual](#)

📁 Total Green
MFG

💎 Delay Kit, Time Delay Kit, Total Green MFG, WG1A, WG1A Time Delay
Kit

Leave a comment

Your email address will not be published. Required fields are marked *

Comment *

Name

Email

Website

☐ Save my name, email, and website in this browser for the next time I comment.

[Post Comment](#)

Search:

[Search](#)

[Manuals+](#) | [Upload](#) | [Deep Search](#) | [Privacy Policy](#) | [@manuals.plus](#) | [YouTube](#)

This website is an independent publication and is neither affiliated with nor endorsed by any of the trademark owners. The "Bluetooth®" word mark and logos are registered trademarks owned by Bluetooth SIG, Inc. The "Wi-Fi®" word mark and logos are registered trademarks owned by the Wi-Fi Alliance. Any use of these marks on this website does not imply any affiliation with or endorsement.