

## TOSHIBA Setting IP Address on A3 Instructions

[Home](#) » [Toshiba](#) » TOSHIBA Setting IP Address on A3 Instructions 

### Contents

- [1 TOSHIBA Setting IP Address on A3](#)
- [2 Models Supported](#)
- [3 Documents / Resources](#)
- [4 Related Posts](#)

# TOSHIBA

### TOSHIBA Setting IP Address on A3



### Models Supported

### e-Bridge Next Series III

#### Colour e-STUDIO

2020AC / 2525AC / 3025AC / 3525AC / 4525AC / 5525AC / 6525AC **Mono e-STUDIO**  
2528A / 5525A / 6528A

### e-Bridge Next Series II

#### Colour e-STUDIO

2010AC / 2515AC / 3015AC / 3515AC / 4515AC / 5015AC / 5516AC / 6516AC / 7516AC **Mono e-STUDIO**  
2518A / 5518A / 7518A / 8518A

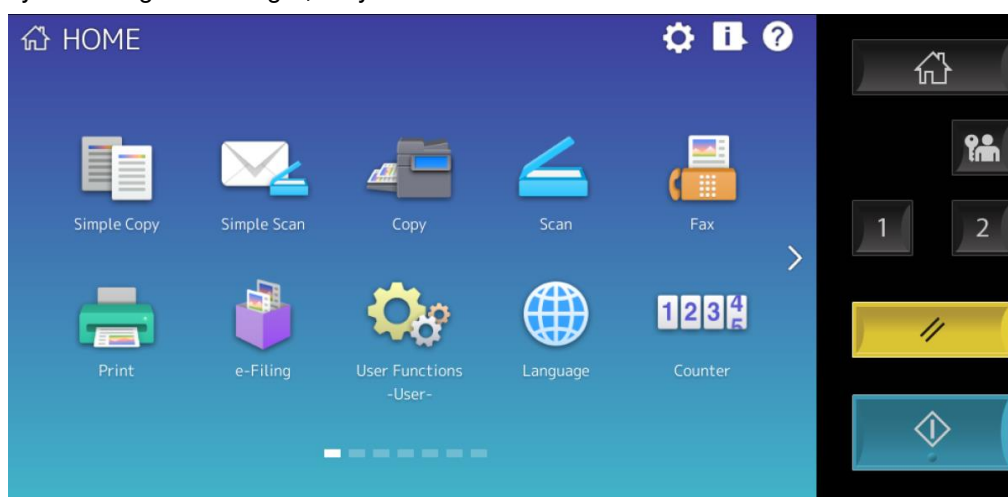
### e-Bridge Next Series I

#### Colour e-STUDIO

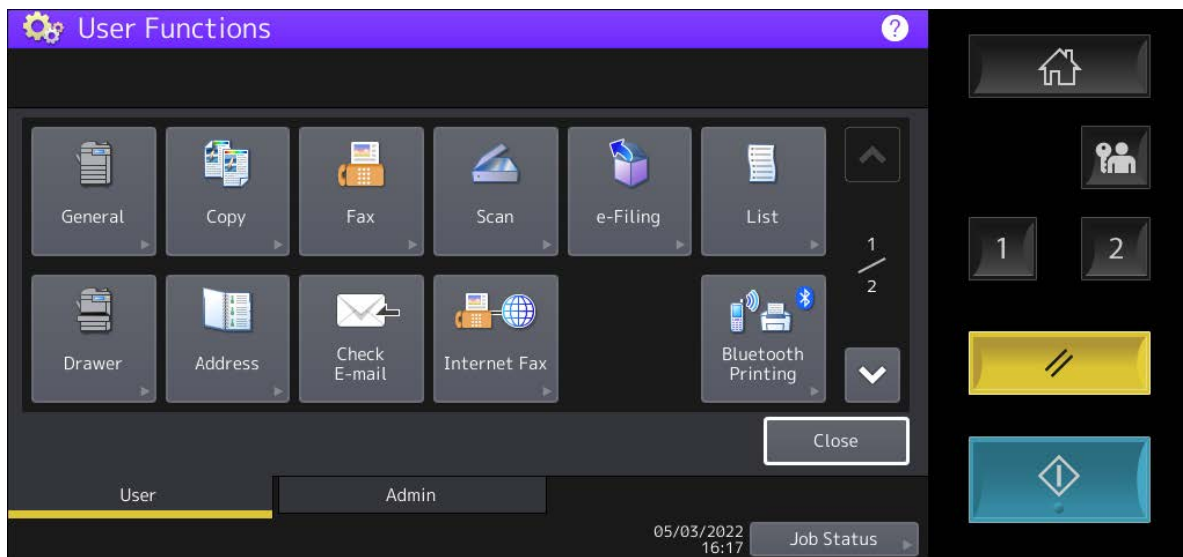
2000AC / 2505AC / 3005AC / 3505AC / 4505AC / 5005AC / 5506AC / 6506AC / 7506AC **Mono e-STUDIO**  
2508A / 3508A / 4508A 3508LP / 4508LP / 5508A / 7508A / 8508A

## Changing the Address on the MFD Front panel

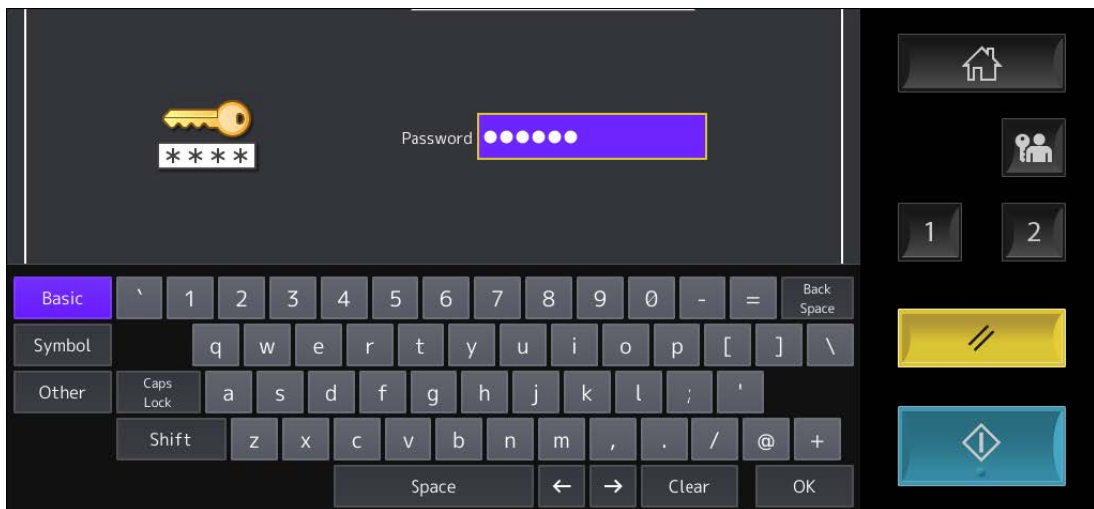
1. First go to the front panel of the copier, and press on User Functions –User- If you don't see this on your main panel, you may have to go to the right, may be on screen 2.



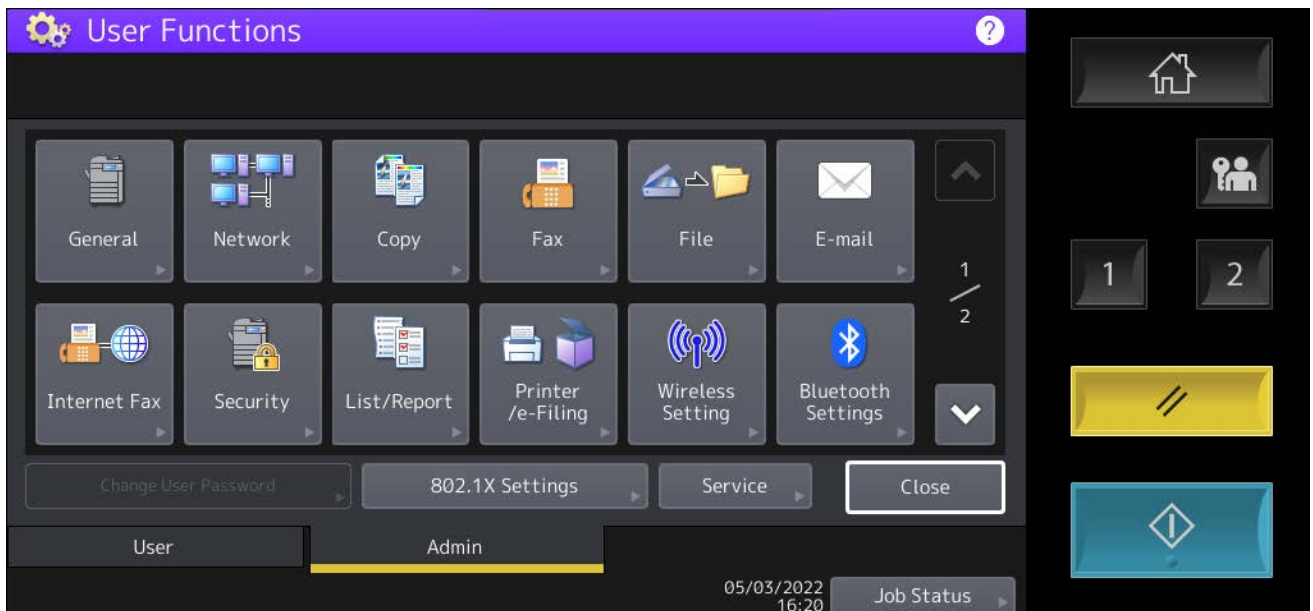
2. Then click on the Admin tab



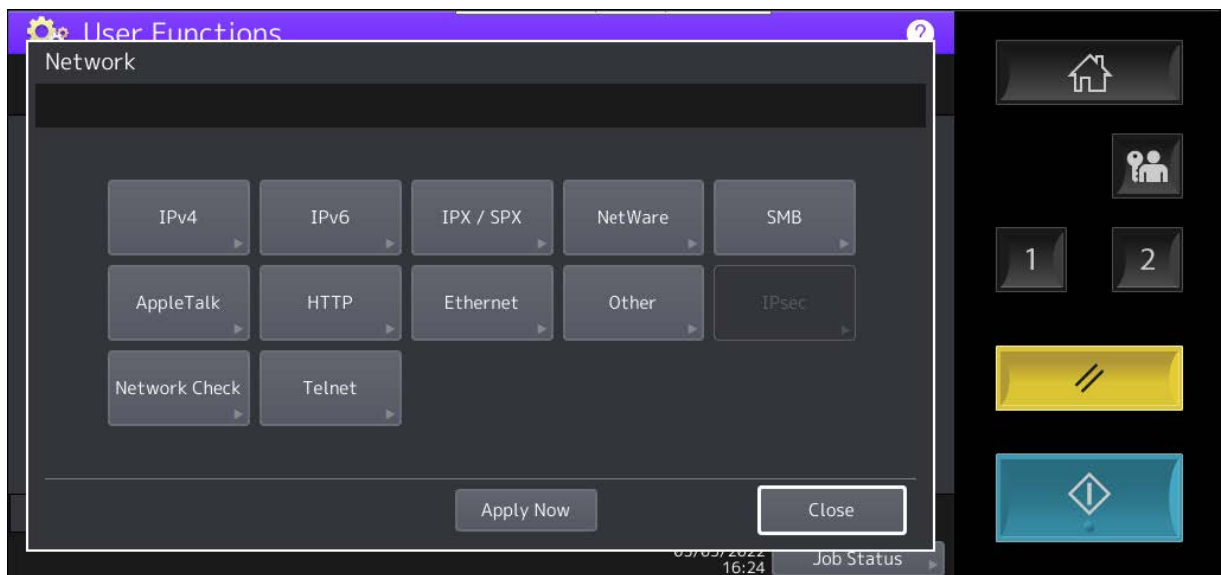
3. Next input your password of 123456 and press ok.



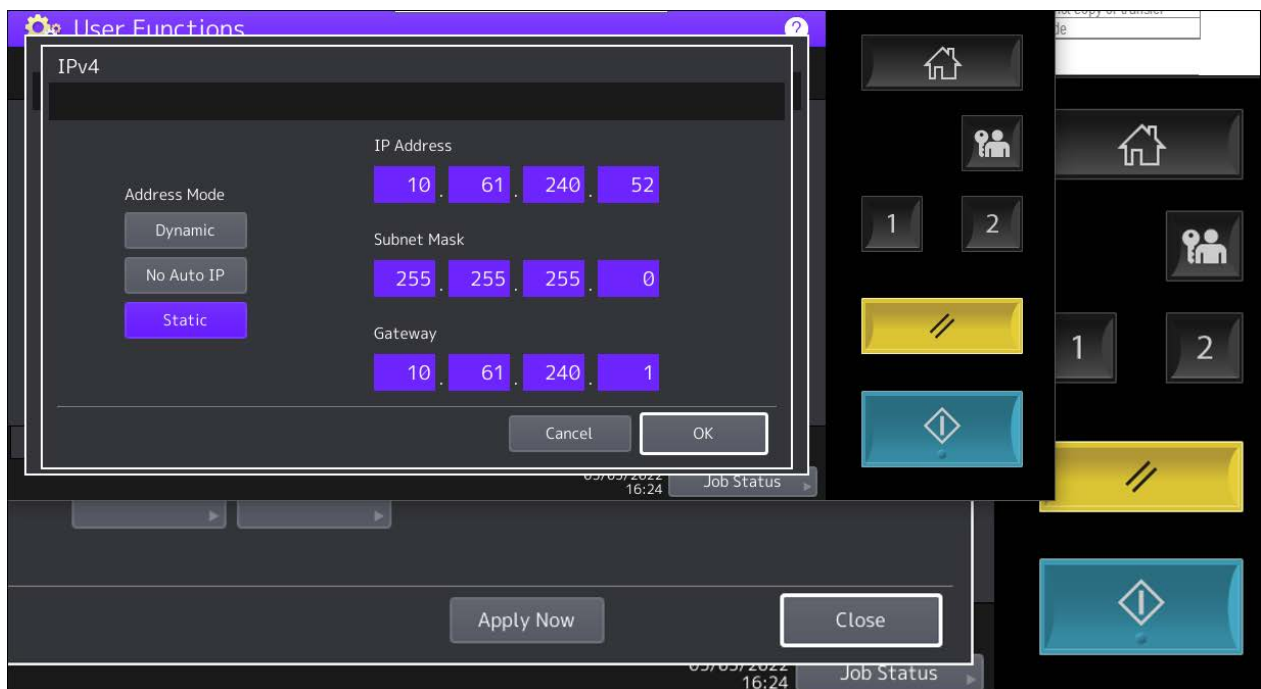
4. Next press on the Network button



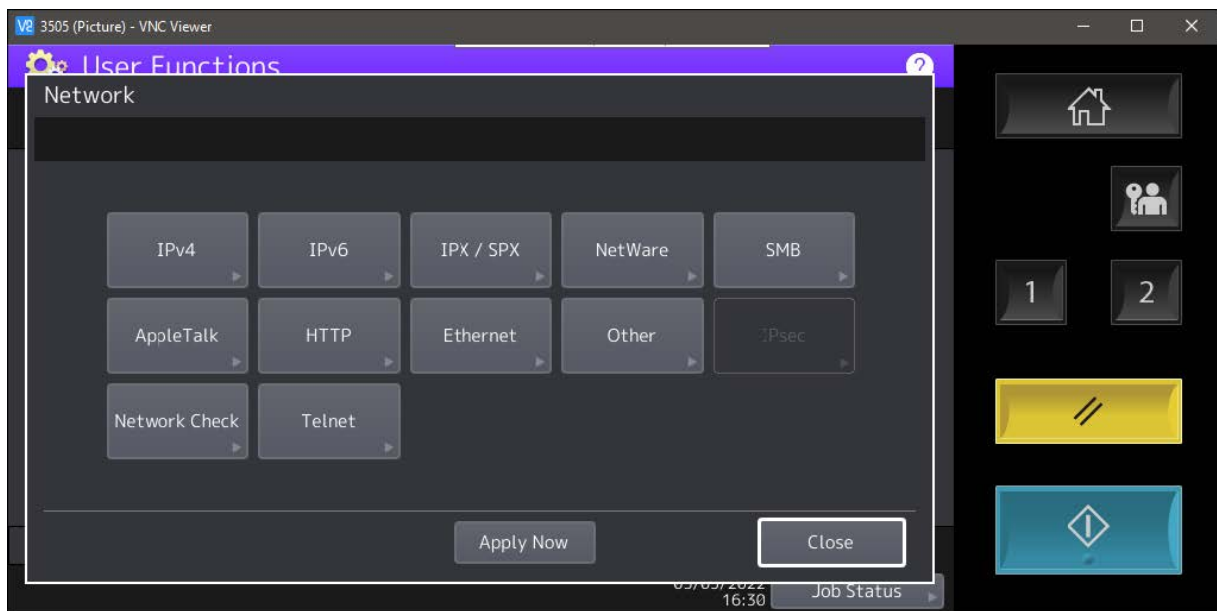
5. Then choose IPv4 from the list



6. Most commonly used are Static IP (hardcoded not depending on DHCP Server) or Dynamic (which will take an available address from your network router/server and assign the next available number). So here input your Static IP, dependent on a free IP address which is not being currently used. Or change to Dynamic, this will grey out your selections and choose the next available IP address.



7. Once you have updated this section, press on Apply Now, and close



8. Wait for the printer to come back to the main screen at ready. Repeat the process to get into the IPv4 area and check to ensure either
  - It has retained the static IP address you inputted
  - It has taken an available DHCP address from our Server or Router

**Next Section covers how to updated IP details via TopAccess (copier Web Browser Interface) Setting IP details via TopAccess**

1. Open a web browser window on your PC / Macintosh, input your printers IP address into the URL field(uniform resource location). Then click on Login on the right hand side of the page

Device Information	
Status	Ready
Name	MFP11814169
Location	
Copier Model	TOSHIBA e-STUDIO3505AC
Serial Number	CFJF63767
MAC Address	00:80:91:b4:45:19
Main Memory Size	4096 MB
Page Memory Size	846 MB
Save as File & e-Filing Space Available	120818 MB
Fax Space Available	958 MB
Contact Information	
Phone Number	
Message	
Alerts	•

Options	
Finisher	Saddle Stitch Finisher
Hole Punch Unit	None
Fax	None

Toner	
Yellow(Y)	27%
Magenta(M)	14%
Cyan(C)	19%
Black(K)	97%

Paper						
Drawer	Size	Thickness	Attribute	Capacity	Level	
Drawer 1	A4R	Plain	None	550	■ ■ ■ ■ ■	
Drawer 2	A3	Plain	None	550	■ ■ ■ ■ ■	
Large Capacity Feeder(Right)	A4	Plain	None	1000	■ ■ ■ ■ ■	
Large Capacity Feeder(Left)	A4	Plain	None	1000	■ ■ ■ ■ ■	

2. Next input your user name and password, admin as user, 123456 as the password



User Name: admin

Password: .....

Login Cancel

- Next click on Administration and then Network

TopAccess

e-Filing Logout

Device Job Status Logs Registration Counter User Management Administration

Setup Security Maintenance Registration AirPrint Application License

Setup

General Network Copier Save as file Email InternetFax Printer/e-Filing Printer Print Service ICC Profile Print Data Converter EWB ODCa Version

- Then scroll down to IPv4, here you have much of the same selections with regards to IPv4. Here set as either Static or Dynamic

IPv4

Address Mode: Dynamic

Obtain a Domain Name automatically: Enable

Obtain a Domain Server Address automatically: Enable

Obtain a WINS Server Address automatically: Enable

Obtain an SMTP Server Address automatically: Disable

Obtain a POP3 Server Address automatically: Disable

Obtain an SNTP Server Address automatically: Disable

IP Address: 10 61 240 52

Subnet Mask: 255 255 255 0

Default Gateway: 10 61 240 1

IPv6

- Next scroll back to the top of the screen and click on save

Basic Setting

Save Cancel

General Setting IPv4 IPv6 DNS DDNS LLNMR

General Setting

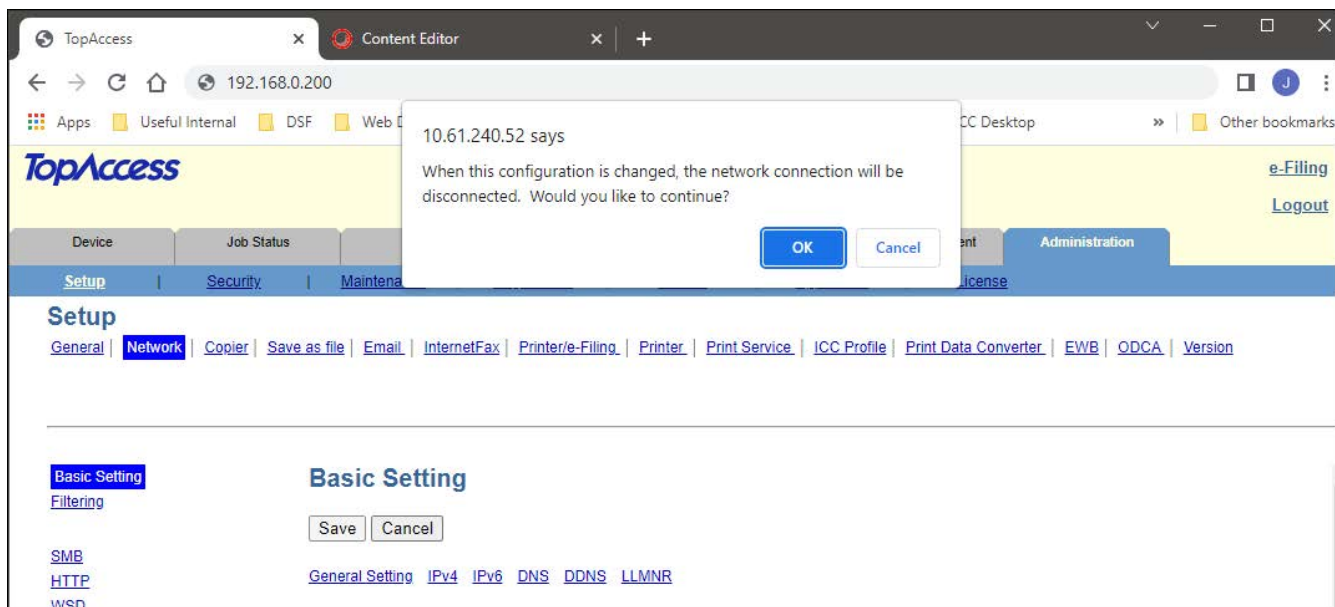
Ethernet Speed Duplex Mode: AUTO

Host Name: MFP11814169

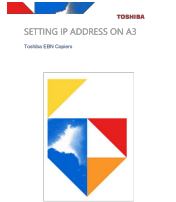
IP Conflict Detect: Enable

IPv4

- Here you click on OK, this will update any changes you have put into effect



Documents / Resources

	<p><b>TOSHIBA Setting IP Address on A3</b> [pdf] Instructions Setting IP Address on A3, IP Address on A3, Setting Address on A3, Address on A3</p>
--	--

Manuals+.