



---

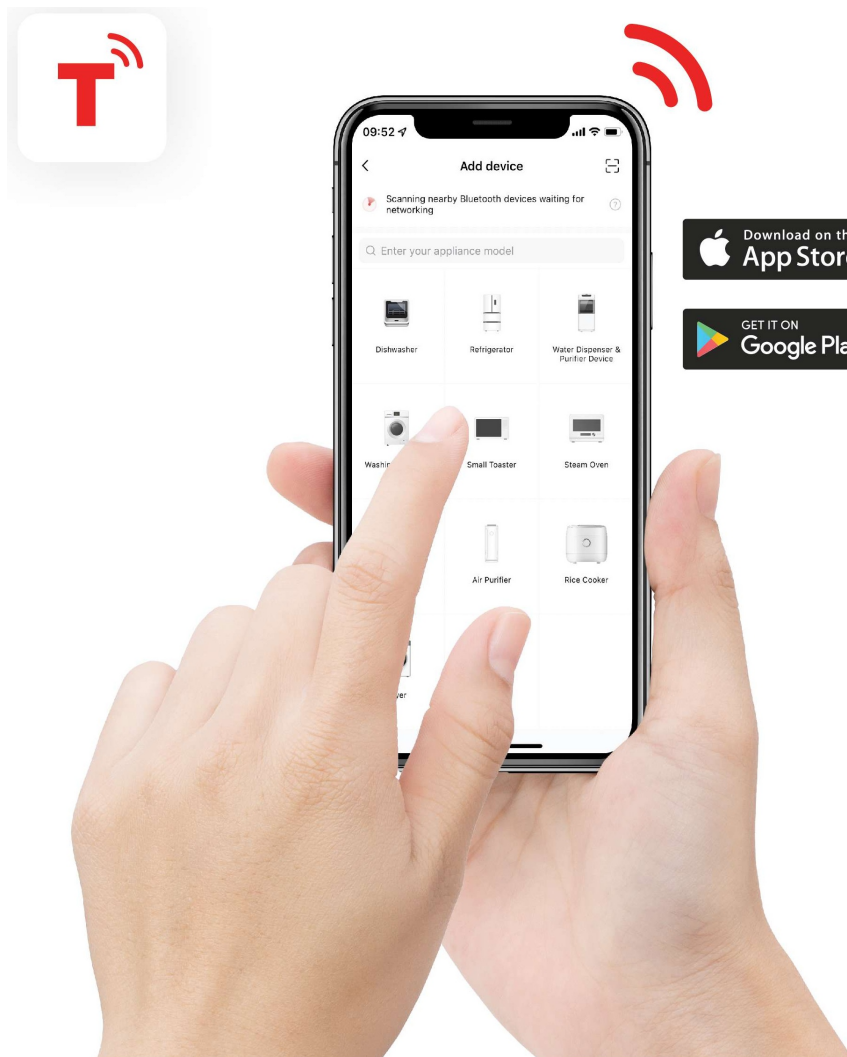
[Home](#) » [Toshiba](#) » **TOSHIBA GR-RS910WI TSmartLife App User Guide** 

**Contents** [ [hide](#) ]

- [1 TOSHIBA GR-RS910WI TSmartLife App](#)
- [2 DOWNLOAD THE TSmartLife APP](#)
- [3 REGISTER AND LOG IN](#)
- [4 CONNECT YOUR DEVICES TO TSmartLife](#)
- [5 QUICK TIPS](#)
- [6 STAYING CONNECTED MATTERS](#)
- [7 Documents / Resources](#)
  - [7.1 References](#)

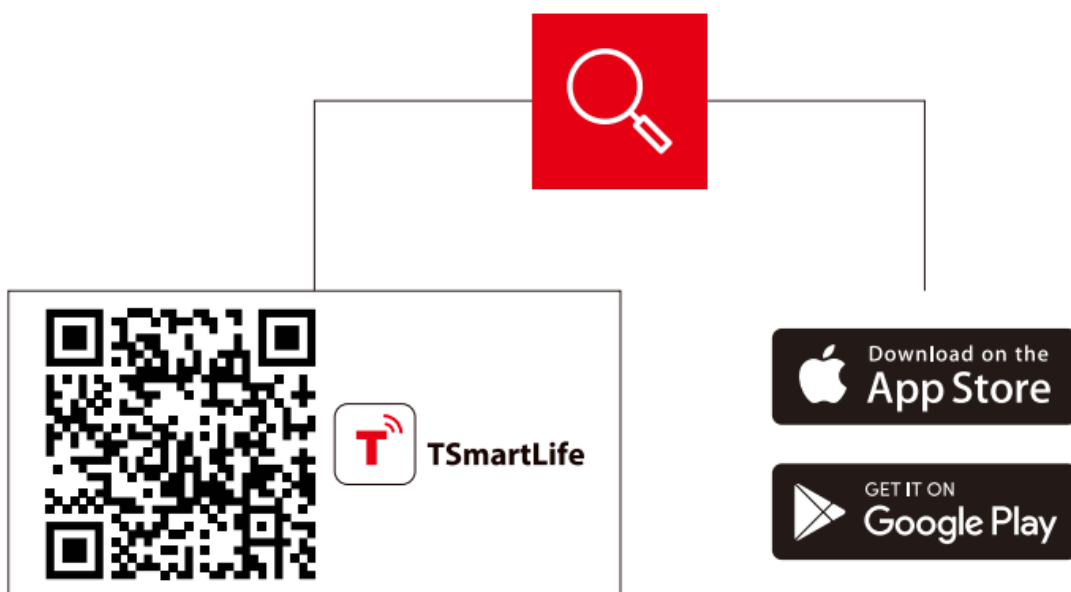
# TOSHIBA

## TOSHIBA GR-RS910WI TSmartLife App



## DOWNLOAD THE TSmartLife APP

- Scan QR code or find us on your app store



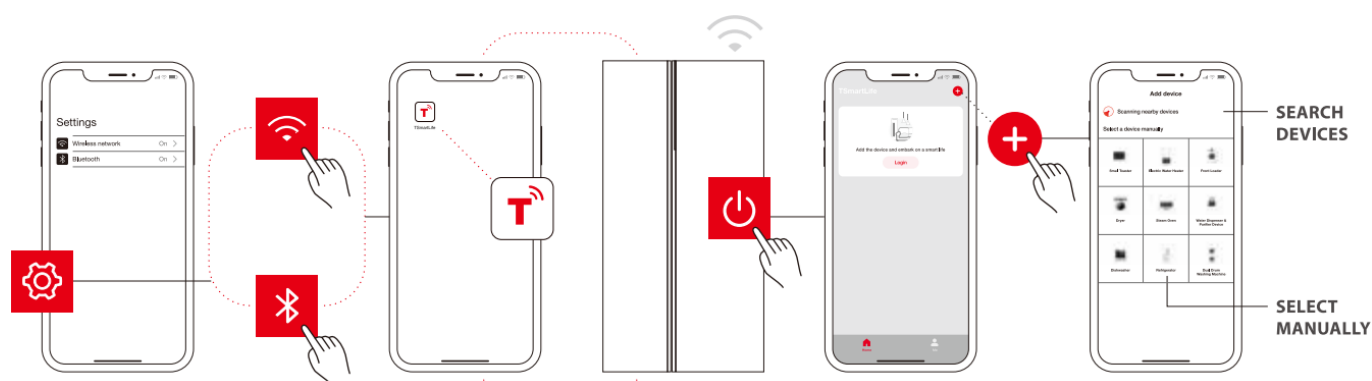
## REGISTER AND LOG IN

- Log in for existing users or sign up for new users



## CONNECT YOUR DEVICES TO TSmartLife

- **A:** Connect to a wireless network and enable Bluetooth.
- **B:** Open the TSmartLife app, Power on the selected device
- **C:** Add your device using one of the following methods:



## QUICK TIPS

- Make sure your devices are powered on.
- Keep your mobile phone close to your device during connection.
- Connect your mobile phone to the wireless network at home.
- Enable the 2.4GHz frequency on your wireless network router. Contact the manufacturer if unsure whether the router supports 2.4GHz.

- The device is unable to connect to a wireless network that requires authentication, and also appears in public areas such as hotels and restaurants.
- It is recommended to use a wireless network name that only contains letters and numbers. If your wireless network name contains special characters, modify it in the router. Disable WLAN+ (Android) or WLAN Assistant (iOS) when connecting your devices to the network.
- To reconnect a device to the wireless network, click “+” on the app home screen and add the device again by category and model according to the app prompts.
- [www.toshiba-lifestyle.com](http://www.toshiba-lifestyle.com)

## STAYING CONNECTED MATTERS

### # DetailMatter

### SMART ASSISTANT



### RELIABLE PARTNER



### TIMELY SUPPORT



## REMOTE CONTROL

The operation of the refrigerator can be controlled remotely on the APP.

- Adjust Temperature
- Super Cooling
- Super FRZ.
- Auto mode



## FOOD MANAGEMENT

- TOSHIBA's food management feature allows you to monitor the freshness of your food at all times.
- Organize your food regularly to prevent waste.



## ENERGY CONSUMPTION

- Automatic statistics of weekly, monthly, and annual power consumption so that the

user is always aware of the refrigerator's power consumption and provides energy-saving tips according to the refrigerator's habits.



## **ECOMASTER**

- Turn on the time you set to automatically adjust your refrigerator's temperature and defrost time, which can help you save energy and electric charge.



## **TURBO MODE**

- One touch switches on PureAir Turbo mode to effectively remove bacteria, purify odours, and keep the air inside the refrigerator fresh.



## **OPEN-DOOR ALARM**

- Send a reminder when the REF is not closed properly.



## **FAMILY CARE**

- Check the REF's opening record by family members.
- Send a reminder if the REF has not been opened during the set time.



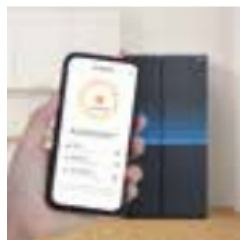
## **OTA UPGRADE**

- Delivering sustainable and scalable IoT services.



## **SELF DIAGNOSTICS**

- The refrigerator can actively perform self-tests for abnormalities, analyse faults, and fix them with a single click, helping users to solve problems faster and more effectively.



## **AFTER-SALES**

The user can call the after-sales by one click, and check the common FAQ user manual on the APP.

- After-sales
- FAQ information

- E-manual



Actual functions are subject to the version after activating the appliances

## Documents / Resources

	<a href="#">TOSHIBA GR-RS910WI TSmartLife App [pdf]</a> User Guide PMY-06, GR-RS910WI TSmartLife App, GR-RS910WI, TSmartLife App, App
--	--

## References

- [User Manual](#)

📎 app, GR-RS910WI, GR-RS910WI TSmartLife App, PMY-06, Toshiba, TSmartLife

📁 Toshiba App

## Leave a comment

Your email address will not be published. Required fields are marked \*

Comment \*

Name



Email

Website

☐ Save my name, email, and website in this browser for the next time I comment.

**Post Comment**

**Search:**

e.g. whirlpool wrf535swhz

**Search**

[Manuals+](#) | [Upload](#) | [Deep Search](#) | [Privacy Policy](#) | [@manuals.plus](#) | [YouTube](#)

This website is an independent publication and is neither affiliated with nor endorsed by any of the trademark owners. The "Bluetooth®" word mark and logos are registered trademarks owned by Bluetooth SIG, Inc. The "Wi-Fi®" word mark and logos are registered trademarks owned by the Wi-Fi Alliance. Any use of these marks on this website does not imply any affiliation with or endorsement.