



# TORO 41713 GeoLink GSM Precision Spray System Kit Instruction Manual

[Home](#) » [Toro](#) » TORO 41713 GeoLink GSM Precision Spray System Kit Instruction Manual 

## Contents

- [1 TORO 41713 GeoLink GSM Precision Spray System Kit](#)
- [2 Product Information](#)
- [3 Product Usage Instructions](#)
- [4 Frequently Asked Questions \(FAQ\)](#)
- [5 Ordering Replacement Parts](#)
- [6 Documents / Resources](#)
  - [6.1 References](#)
- [7 Related Posts](#)



**TORO 41713 GeoLink GSM Precision Spray System Kit**



## Product Information

### Specifications

- **Model Number:** 41713–Serial No. 323000000 and Up
- **Form Number:** 3456-326 Rev B

### Product Usage Instructions

#### Ordering Replacement Parts

To order replacement parts, please follow these steps:

1. Supply the part number of the desired part.
2. Indicate the quantity required.
3. Provide a detailed description of each part.

#### Understanding Reference Numbers

- Each identified part in an illustration has a reference number.
- The reference number for a part also appears in the parts list, along with other information about the part.

#### Service Assembly Reference Numbers

Parts in service assemblies have reference numbers in the form a:b. The 'a' represents the reference number of the entire service assembly, and the 'b' represents a sequential number unique to each part within the service assembly.

For example, if a wheel assembly is identified by reference number 6, the tire would be identified as 6:1, the valve as 6:2, and the wheel as 6:3. When ordering the assembly identified by reference number 6, you will receive all parts identified by reference numbers 6:1, 6:2, and 6:3. However, you may also order any part individually.

## Reference Numbers Indicating Quantity

In an illustration, if a reference number indicates more than one part, the reference number has the form nX y. The 'n' represents the quantity of the part, the 'X' is the multiplication symbol, and the 'y' represents the reference number.

For example, in an illustration, the reference number 2X 37 means that two of the parts identified by reference number 37 are indicated.

The product includes the following items:

- Multi Pro 5800 Precision Spray System Assembly
- Multi Pro 1750 Precision Spray System Assembly

### Multi Pro 5800 Precision Spray System Assembly

Ref.	Part Number	Qty.	Description
1	140-7378	2	Kit, Ags-2 Receiver +rtk Oaf
2:1	133-0374	1	Control Console-Xd
2:2	130-7299	1	Arm-Mount, Console

### Multi Pro 1750 Precision Spray System Assembly

Ref.	Part Number	Qty.	Description
1	140-7378	2	Kit, Ags-2 Receiver +rtk Oaf
2:1	133-0374	1	Control Console-Xd
2:2	130-7299	1	Arm-Mount, Console

## Frequently Asked Questions (FAQ)

- **Q:** How do I order replacement parts?
- **A:** To order replacement parts, please supply the part number, quantity, and description of each part desired.
- **Q:** What are reference numbers in the parts list?
- **A:** Reference numbers in the parts list indicate the identification number of each part in an illustration. They help identify and order specific parts.

## Ordering Replacement Parts

To order replacement parts, please supply the part number, the quantity, and the description of each part desired.

### Understanding Reference Numbers

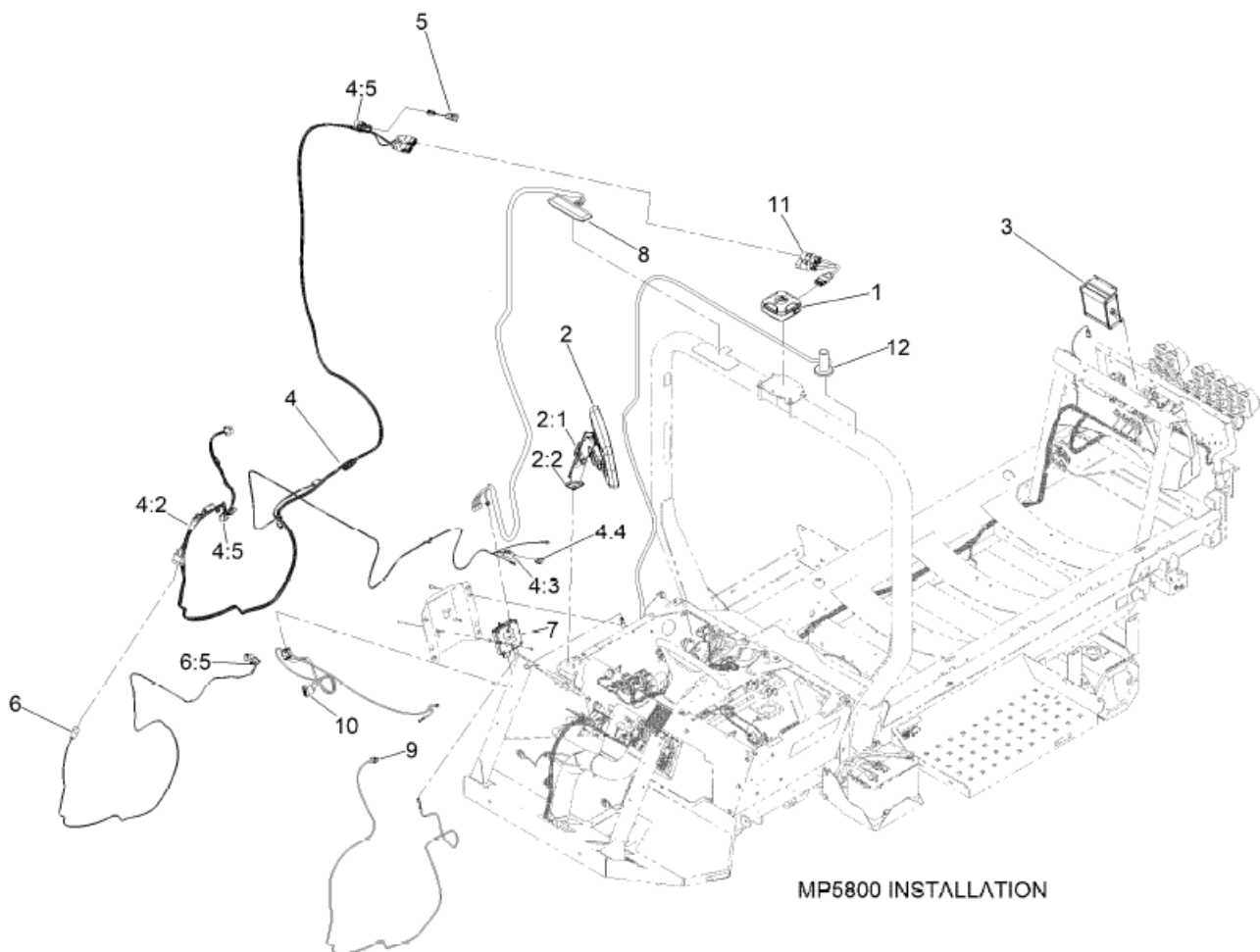
Each identified part in an illustration has a reference number. The reference number for a part also appears in the parts list, along with other information about the part. This catalog uses two special reference number formats, one to indicate parts in a service assembly and another to indicate the quantity of a given part in an illustration.

### Service Assembly Reference Numbers

Parts in service assemblies have reference numbers in the form a:b. The a represents the reference number of the entire service assembly and the b represents a sequential number unique to each part within the service assembly. For example, a wheel assembly might be identified by reference number 6, the tire by 6:1, the valve by 6:2, and the wheel by 6:3. When you order the assembly identified by reference number 6, you receive all parts identified by reference numbers 6:1, 6:2, and 6:3. However, you may also order any part individually. Reference numbers of this type appear in illustrations and in parts lists.

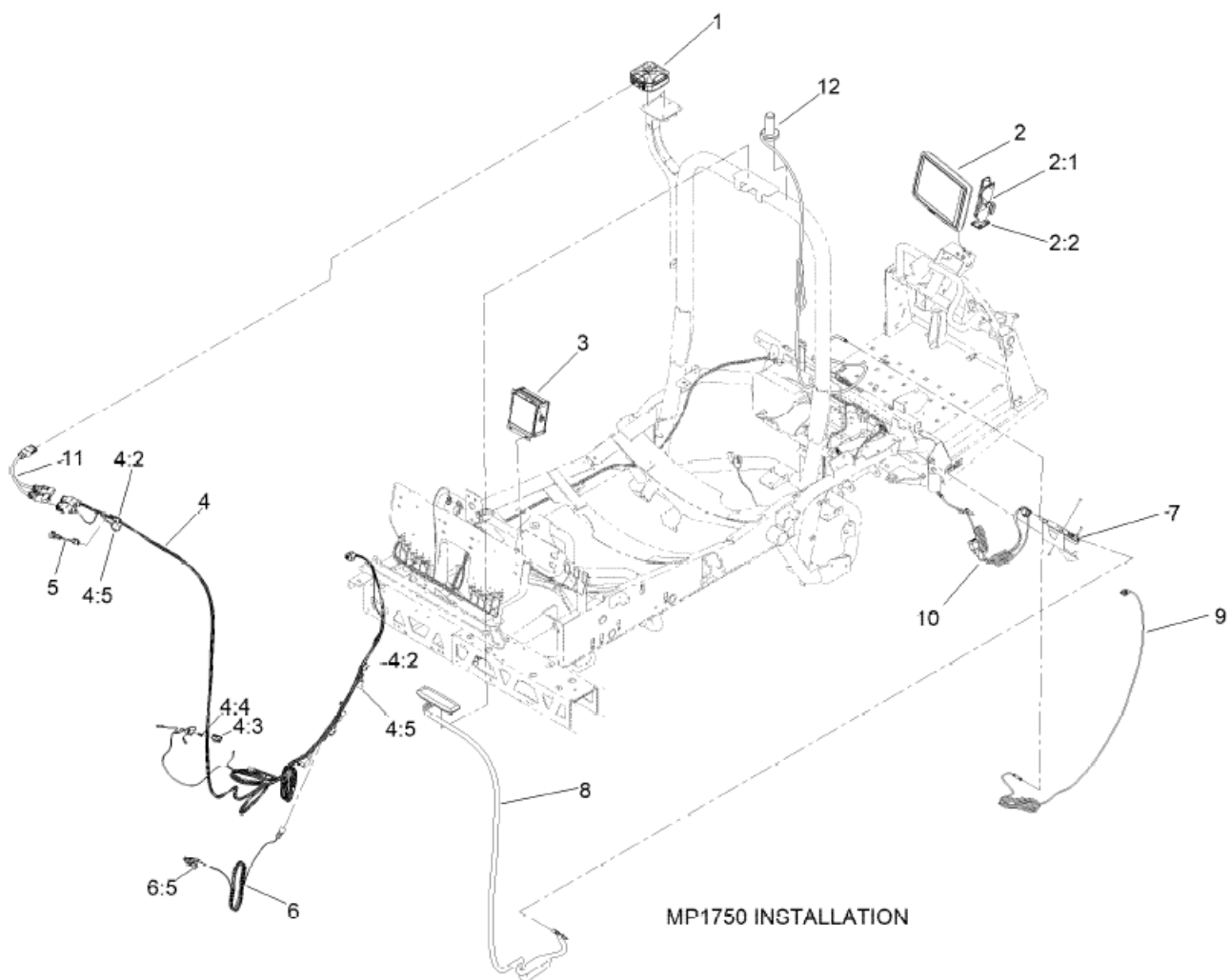
### Reference Numbers Indicating Quantity

In an illustration, if a reference number indicates more than one part, the reference number has the form nX y. The n represents the quantity of the part, the X is the multiplication symbol, and the y represents the reference number. For example, in an illustration, the reference number 2X 37 means that two of the parts identified by reference number 37 are indicated.



## Multi Pro 5800 Precision Spray System Assembly

<i>Ref.</i>	<i>Part Number</i>	<i>Qty.</i>	<i>Description</i>		<i>Ref.</i>	<i>Part Number</i>	<i>Qty.</i>	<i>Description</i>
1	140-7378	1	Kit, Aqs-2 Receiver +rtk Oaf		6	122-1650	1	Harness-Wire, Adptr
2	147-0615	1	Control Console-Xd		6:5	32180-089	1	Cap-Plug, 3 Way
2:1	133-0374	1	Arm-Mount, Console		7	147-4687	1	Modem-CI55,Universal
2:2	130-7299	1	Base-Mount, Ram		8	139-6148	1	Antenna ASM, CI55
3	137-4258	1	Controller –		9	147-3180	1	Harness-Xd To Modem,
			Rate/Auto-Section, Asc-10					CI55
4	122-1373	1	Harness-Wire, Geolink		10	138-6285	1	Harness – Modem To Power,
4:2	32180-043	2	Resistor-120 Ohm					CI-55
4:3	218-578	1	Fuse-Blade, 10 Amp		11	122-2815	1	Harness-Wire, Adaptor
4:4	32180-019	1	Cover-Fuse, Single		12	140-7342	1	Antenna-3Db, W/Magnetic
4:5	122-1404	2	Terminator-Isobus					Mount
5	122-1649	1	Harness-Wire, Adapter					



**Multi Pro 1750 Precision Spray System Assembly**

<i>Ref.</i>	<i>Part Number</i>	<i>Qty.</i>	<i>Description</i>		<i>Ref.</i>	<i>Part Number</i>	<i>Qty.</i>	<i>Description</i>
1	140-7378	1	Kit, Aqs-2 Receiver +rtk Oaf		6	122-1650	1	Harness-Wire, Adptr
2	147-0615	1	Control Console-Xd		6:5	32180-089	1	Cap-Plug, 3 Way
2:1	133-0374	1	Arm-Mount, Console		7	147-4687	1	Modem-CI55,Universal
2:2	130-7299	1	Base-Mount, Ram		8	139-6148	1	Antenna ASM, CI55
3	137-4258	1	Controller –		9	147-3180	1	Harness-Xd To Modem,
			Rate/Auto-Section, Asc-10					CI55
4	122-1373	1	Harness-Wire, Geolink		10	138-6285	1	Harness – Modem To Power,
4:2	32180-043	2	Resistor-120 Ohm					CI-55
4:3	218-578	1	Fuse-Blade, 10 Amp		11	122-2815	1	Harness-Wire, Adaptor
4:4	32180-019	1	Cover-Fuse, Single		12	140-7342	1	Antenna-3Db, W/Magnetic
4:5	122-1404	2	Terminator-Isobus					Mount
5	122-1649	1	Harness-Wire, Adapter					

Register at [www.Toro.com](http://www.Toro.com). Original Instructions (EN)



## Documents / Resources

	<p><b><a href="#">TORO 41713 GeoLink GSM Precision Spray System Kit</a></b> [pdf] Instruction Manual  41713, 41713 GeoLink GSM Precision Spray System Kit, GeoLink GSM Precision Spray System Kit, GSM Precision Spray System Kit, Precision Spray System Kit, Spray System Kit, Kit</p>
--	--

## References

- [User Manual](#)