

## **TORMEK**

**TORMEK-T-8-  
Original-  
Sharpening-  
System-PRODUCT**



# **TORMEK T-8 Original Sharpening System Instruction Manual**

[Home](#) » [TORMEK](#) » **TORMEK T-8 Original Sharpening System Instruction Manual** 

### **Contents**

- [1 TORMEK T-8 Original Sharpening System](#)
- [2 Specifications](#)
- [3 FAQ:](#)
- [4 Safety Instruction](#)
- [5 Direction of rotation](#)
- [6 Spare parts list](#)
- [7 Documents / Resources](#)
  - [7.1 References](#)
- [8 Related Posts](#)



**TORMEK T-8 Original Sharpening System**



## Specifications

- Model: T-8
- Article No: 3196221
- Serial No: [not provided]
- Power Supply: 220-240 V, 50-60 Hz
- Power Input: 200 W
- Speed: 100 rpm
- Continuous Duty: S1
- Max/Min Wheel Diameter: 250/180 mm
- Made in Sweden by Tormek AB, 711 34 Lindesberg

## FAQ:

### Q: Can I use the power tool in damp environments?

A: No, do not expose the machine to rain or use it in damp environments to avoid damage and electrical hazards.

### Q: What should I do before making adjustments to the machine?

A: Ensure that the wheel has stopped running completely before making any adjustments to the machine.

### Q: What is the recommended speed for using a grinding wheel?

A: Use a grinding wheel suitable for 150 RPM to ensure safe and effective operation of the machine.

## Safety Instruction

**WARNING** Read all safety warnings, instructions, illustrations and specifications provided with this power tool. Failure to follow all instructions listed below may result in electric shock, fire and/or serious injury.

**Save all warnings and instructions for future reference.**

The term “power tool” in the warnings refers to your mains-operated (corded) power tool or battery-operated (cordless) power tool.

### **1. Work area safety**

- Keep work area clean and well lit. Cluttered or dark areas invite accidents.
- Do not operate power tools in explosive atmospheres, such as in the presence of flammable liquids, gases or dust. Power tools create sparks which may ignite the dust or fumes.
- Keep children and bystanders away while operating a power tool. Distractions can cause you to lose control.
- The machine should be operated on a flat, stable surface.
- Make workshop child proof with padlocks or master switches.

### **2. Electrical safety**

- Power tool plugs must match the outlet. Never modify the plug in any way. Do not use any adapter plugs with earthed (grounded) power tools. Unmodified plugs and matching outlets will reduce risk of electric shock.
- Avoid body contact with earthed or grounded surfaces, such as pipes, radiators, ranges and refrigerators. There is an increased risk of electric shock if your body is earthed or grounded.
- Do not expose power tools to rain or wet conditions. Water entering a power tool will increase the risk of electric shock.
- Do not abuse the cord. Never use the cord for carrying, pulling or unplugging the power tool. Keep cord away from heat, oil, sharp edges or moving parts. Damaged or entangled cords increase the risk of electric shock.
- When operating a power tool outdoors, use an extension cord suitable for outdoor use. Use of a cord suitable for outdoor use reduces the risk of electric shock.
- If operating a power tool in a damp location is unavoidable, use a residual current device (RCD) protected supply.  
Use of an RCD reduces the risk of electric shock.
- This tool is equipped with an electric cord having an equipment-grounding conductor and a grounding plug. The plug must be plugged into a matching outlet that is properly installed and grounded in accordance with all local codes and ordinances. In the event of a malfunction or breakdown, grounding provides a path of least resistance for electric current to reduce the risk of electric shock.
- The conductor with insulation that has an outer surface that is green with or without yellow stripes is the equipment-grounding conductor. If repair or replacement of the electric cord or plug is necessary, do not connect the equipment-grounding conductor to a live terminal. Improper connection of the equipment-grounding conductor can result in a risk of electric shock.
- Check with a qualified electrician or service personnel if the grounding instructions are not completely understood, or if in doubt as to whether the tool is properly grounded.
- Use only 3-wire extension cords that have 3-prong grounding
- Connect the machine to an earthed power supply with the voltage and Hz, which is written on the marking plate. Use plugs and 3-pole receptacles that accept the tool's plug.
- Repair or replace damaged or worn cord immediately.

### **3. Personal safety**

- Stay alert, watch what you are doing and use common sense when operating a power tool. Do not use a

power tool while you are tired or under the influence of drugs, alcohol or medication. A moment of inattention while operating power tools may result in serious personal injury.

- Use personal protective equipment. Always wear eye protection. Protective equipment such as a dust mask, non-skid safety shoes, hard hat or hearing protection used for appropriate conditions will reduce personal injuries.
- Prevent unintentional starting. Ensure the switch is in the off-position before connecting to power source and/or battery pack, picking up or carrying the tool. Carrying power tools with your finger on the switch or energising power tools that have the switch on invites accidents.
- Remove any adjusting key or wrench before turning the power tool on. A wrench or a key left attached to a rotating part of the power tool may result in personal injury.
- Do not overreach. Keep proper footing and balance at all times. This enables better control of the power tool in unexpected situations.
- Dress properly. Do not wear loose clothing or jewellery. Keep your hair and clothing away from moving parts. Loose clothes, jewellery or long hair can be caught in moving parts.
- If devices are provided for the connection of dust extraction and collection facilities, ensure these are connected and properly used. Use of dust collection can reduce dust-related hazards.
- Do not let familiarity gained from frequent use of tools allow you to become complacent and ignore tool safety principles. A careless action can cause severe injury within a fraction of a second.
- Make sure your hands are dry and clean from grease and oil.
- Only use Tormek original jigs and accessories. Use of other accessories than those recommended can be a danger for the user.
- Keep your hands and fingers away from the area between the jig and the grinding wheel.

#### **4. Power tool use and care**

- Do not force the power tool. Use the correct power tool for your application. The correct power tool will do the job better and safer at the rate for which it was designed.
- Do not use the power tool if the switch does not turn it on and off. Any power tool that cannot be controlled with the switch is dangerous and must be repaired.
- Disconnect the plug from the power source and/or remove the battery pack, if detachable, from the power tool before making any adjustments, changing accessories, or storing power tools. Such preventive safety measures reduce the risk of starting the power tool accidentally.
- Store your power tools turned off, unplugged out of the reach of children and do not allow persons unfamiliar with the power tool or these instructions to operate the power tool. Power tools are dangerous in the hands of untrained users.
- Maintain power tools and accessories. Check for misalignment or binding of moving parts, breakage of parts and any other condition that may affect the power tool's operation. If damaged, have the power tool repaired before use. Many accidents are caused by poorly maintained power tools.
- Keep cutting tools sharp and clean. Properly maintained cutting tools with sharp cutting edges are less likely to bind and are easier to control.
- Use the power tool, accessories and tool bits etc. in accordance with these instructions, taking into account the working conditions and the work to be performed. Use of the power tool for operations different from those intended could result in a hazardous situation.
- Keep handles and grasping surfaces dry, clean and free from oil and grease. Slippery handles and grasping surfaces do not allow for safe handling and control of the tool in unexpected situations.
- Inspect the cord set periodically. If damaged, have it exchanged by qualified personnel. This is also valid

for an extension cable if used.

- Only use Tormek original grinding wheels intended for model T-2. Max. diameter 200 mm and max. width 40 mm. Hole diameter 12 mm. grinding wheel by hand.

## **5. Service**

- Have your power tool serviced by a qualified repair person using only identical replacement parts. This will ensure that the safety of the power tool is maintained.

In the event that your Tormek needs service – contact your Tormek dealer. In many cases the problem can be solved over the phone or by sending a spare part. Do not return the machine without an agreement with your Tormek dealer.

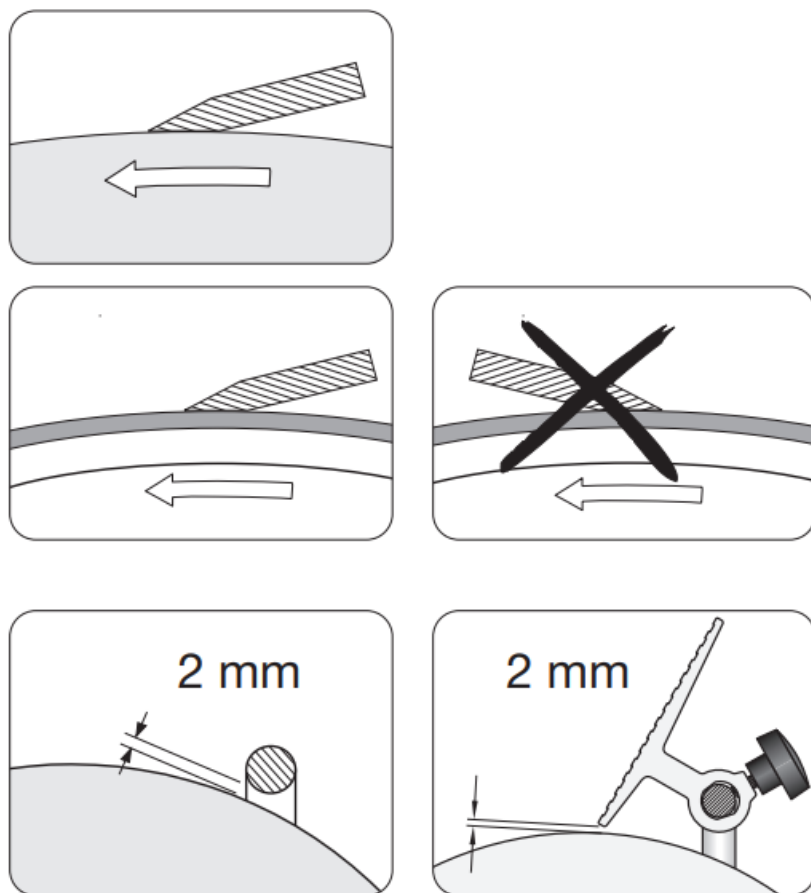
Tormek AB  
Torphyttvägen 40  
711 34 Lindesberg SWEDEN  
Tel: +46 (0) 581-147 90  
E-mail: [support@tormek.se](mailto:support@tormek.se)

## **Direction of rotation**

- Sharpening: For Free-hand sharpening: Sharpen along with the grinding wheel's direction of rotation.
- Honing: Always hone along with the honing wheel's direction of rotation. Otherwise, the tool can cut into the honing wheel.

## **Distance of supports**

When using tool rest the SVD-110 Tool Rest or universal support bar as a tool rest, the distance between the support and the grinding wheel must never exceed 2 mm. If you are sharpening using a grindstone adjust the support as the grindstone wears down.



#### After usage

- Never leave the machine switched on.
- Never leave a wet grinding wheel in freezing temperatures.
- Store the machine in a dry, locked area and out of reach of children and unauthorised personnel.

#### Marking plate for model Tormek T-8

Always hone **away** from the edge.

**MODEL: T-8**  
**ARTICLE NO:**  
**SERIAL NO:**  
**DATE:**

220-240 V, 50-60 Hz. 200 W (input),  
 100 rpm. Continuous duty S1.  
 Max/min wheel diameter 250/180 mm.

Made in Sweden by  
 Tormek AB, 711 34 Lindesberg  
[www.tormek.com](http://www.tormek.com)

#### Sound level

## T-8

LpA 59 dB(A)

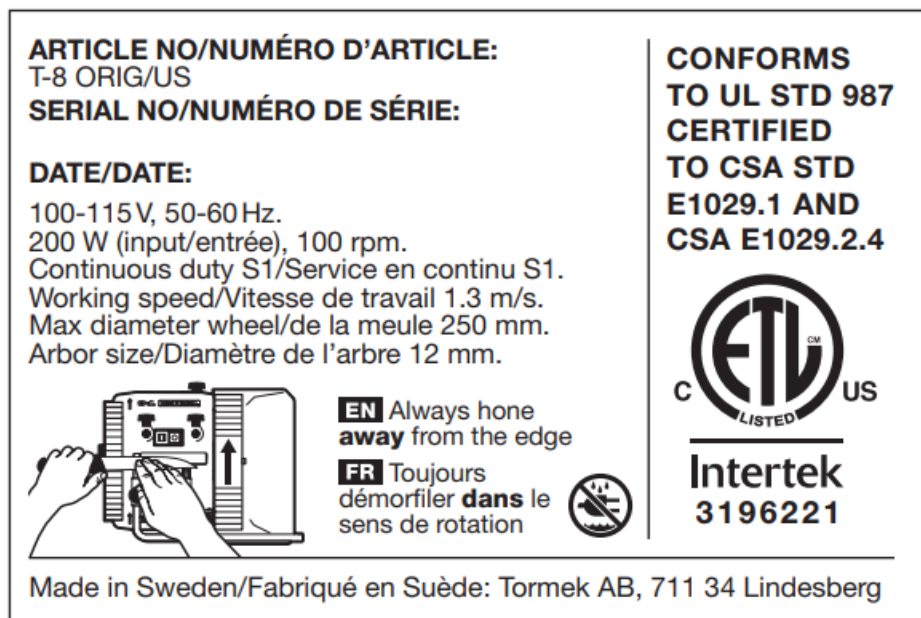
LWA 54 dB(A)

KpA 2.5 dB(A)

Use protective safety goggles.

Read the instructions before use.

### Marking plate for model Tormek T-8 ETL-Version

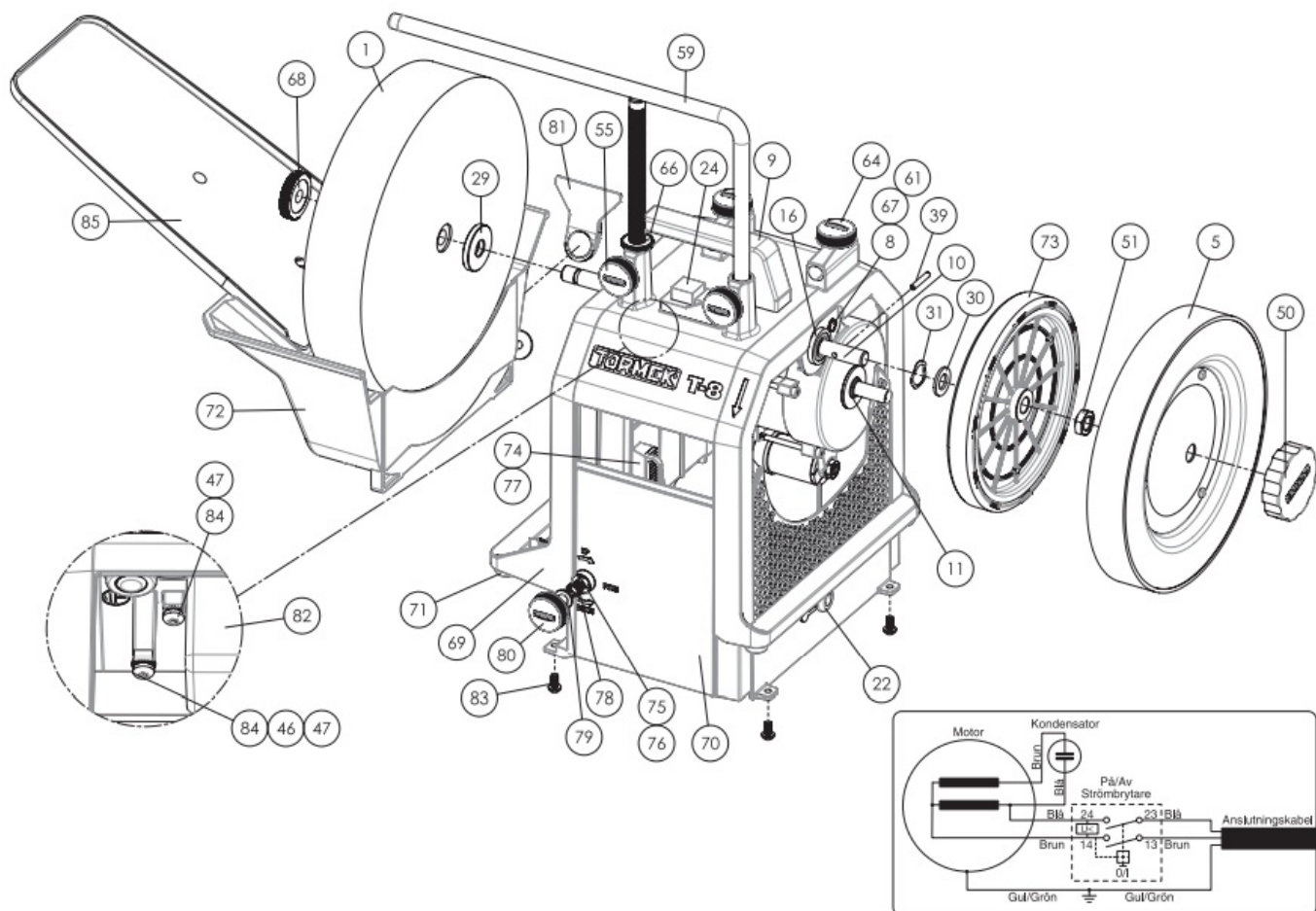


**WARNING** Read the instructions before operating the machine. Do not use in area where children may be present. Do not make adjustments until the wheel has stopped running. Wear eye protection. Use grinding wheel suitable for 150 RPM.

Do not expose the machine to rain and do not use it in damp environments.

### Spare parts list

#### Model T-8



Pos.	Designation	Quantity	Part no.	Pos.	Designation	Quantity	Part no.
1	Grinding wheel	1	6011	55	Locking knob for universal support	2	7031
5	Honing wheel	1	0591-07	59	US-105 Universal Support with Micro Adjust T-8	1	0220
8	Swing shaft	1	1015	61	* Spacer spring for motor	1	0561
9	Handle including nut & washer	1	3041	64	Locking knob	2	7120
10	** MSK-250 Stainless Steel Shaft with EzyLock	1	1041	66	Adjusting nut with dial	1	1162
11	Motor	1	6021 (230V) 6161 (115V)	67	* Bushing for swing shaft	1	3123
16	Main shaft bearing	2	3061	68	EzyLock	1	1190
21	* Power cable rack	1	6031 (SE) 6041 (CH) 6043 (US) 6050 (JP) 6053 (GB) 6055 (AU) 6057 (ZA)	69	Housing	1	2000
22	Grommet	1	6081 (230V) 6191 (115V)	70	Plastic cover	1	3070 (230V) 3130 (115V)
24	Power switch	1	6320 (230V) 6330 (115V)	71	Rubber foot	4	3198
29	Washer for grindstone	1	0130	72	R-3090 Water Trough for T-8	1	3090
30	Washer for drive wheel	1	5081	73	R-23 Drive Wheel with Rubber Ring T-8	1	2010
31	Wave washer	1	5410	74	Holder water trough	1	2020
39	Lock pin for wheel	1	5071	75	Gear shaft	1	2070
46	Collar washer	2	5001	76	Locking head	1	2080
47	Toothed lock washer	3	5021	77	Guide rail	2	3110
50	Locking knob for honing wheel	1	7041	78	Spring	1	0800
51	Nut. M12 h=4	1	1051	79	Washer 8.4×15×1.6	1	5020
				80	Water trough lift knob	1	7005
				81	Water trough scraper	1	3100
				82	Switch cover	1	3080
				83	Screw M5×10 mm	4	5590
				84	Screw M4×8 mm	3	5600
				85	Drip guard	1	3510


\* Not shown on the illustration.

\*\* Supplied only with MSK-250.


Weight (machine only): 14.8 kg



Documents / Resources

	<a href="#">TORMEK T-8 Original Sharpening System</a> [pdf] Instruction Manual T-4, T-8 Original Sharpening System, T-8, Original Sharpening System, Sharpening System
---	---

References

-  [Tormek | Sharpening machines for edge tools - Tormek](#)
- [User Manual](#)

[Manuals+](#), [Privacy Policy](#)

This website is an independent publication and is neither affiliated with nor endorsed by any of the trademark owners. The "Bluetooth®" word mark and logos are registered trademarks owned by Bluetooth SIG, Inc. The "Wi-Fi®" word mark and logos are registered trademarks owned by the Wi-Fi Alliance. Any use of these marks on this website does not imply any affiliation with or endorsement.