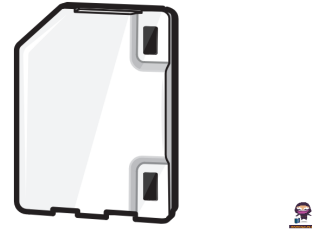


TORK 3.0 Sensor Communication Unit



## TORK 3.0 Sensor Communication Unit Installation Guide

[Home](#) » [TORK](#) » TORK 3.0 Sensor Communication Unit Installation Guide 

### Contents

- [1 TORK 3.0 Sensor Communication Unit](#)
- [2 Specifications](#)
- [3 Sensor Communication Unit 3.0](#)
- [4 Replace battery](#)
- [5 Installation](#)
- [6 Battery Replacement](#)
- [7 Usage](#)
- [8 FAQs](#)
- [9 Documents / Resources](#)
  - [9.1 References](#)



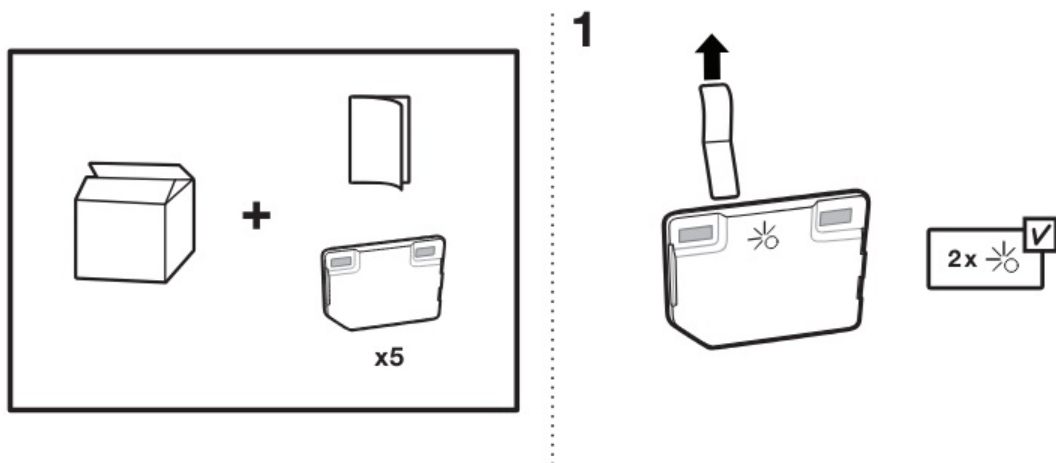
**TORK 3.0 Sensor Communication Unit**



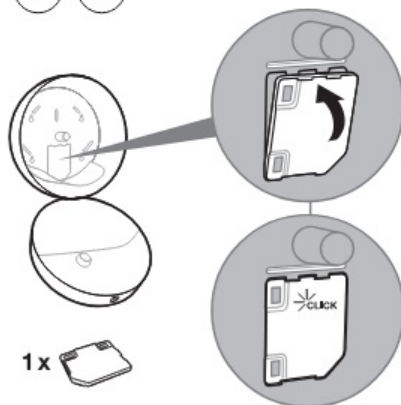
## Specifications

- Product Name: Sensor Communication Unit 3.0
- Model: 2a
- Dimensions: 2x x5
- Colour: Twin
- Components: 1x 2c Combination Cabinet, 2x T8
- Battery: 1 x CR3032
- Manufactured by: Essity
- Origin: Made in Sweden
- Version: A

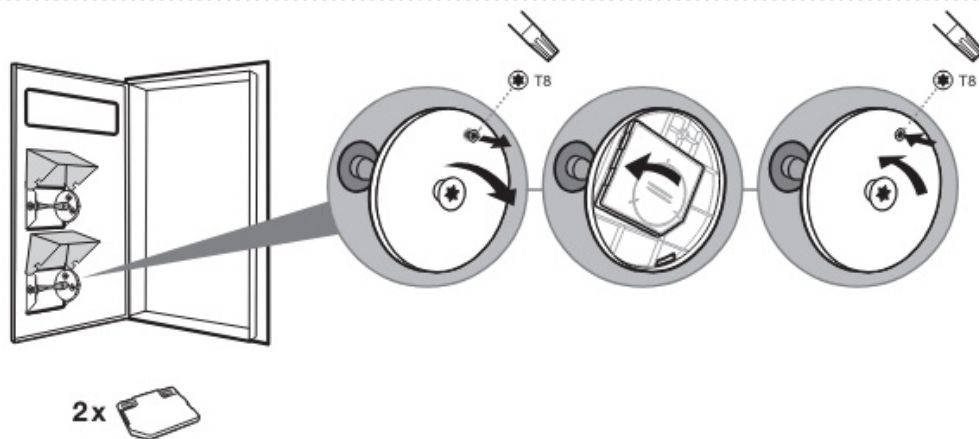
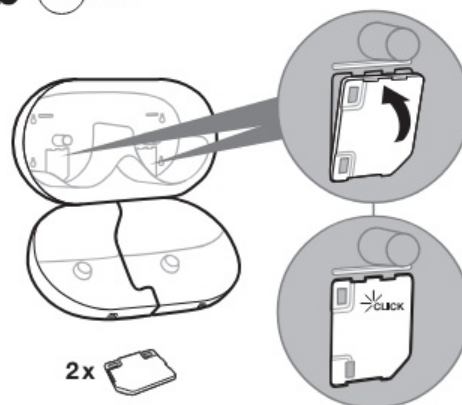
## Sensor Communication Unit 3.0



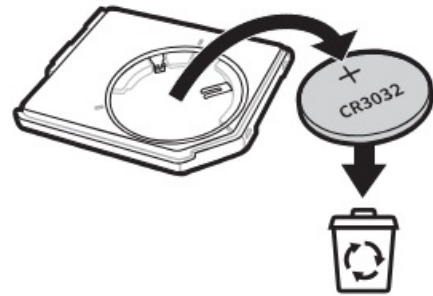
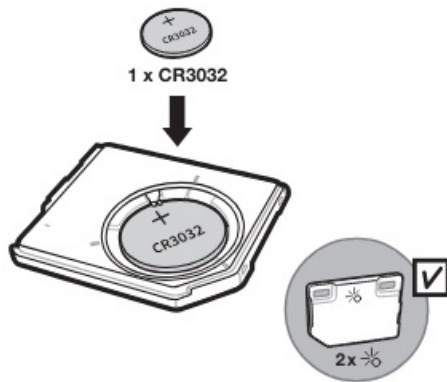
**2a** T8 T9



**2b** T9 Twin



**Replace battery**

**1****3****4****4**

## Installation

1. Open the 2c Combination Cabinet.
2. Insert the Sensor Communication Unit 3.0 into the cabinet.
3. Secure the unit in place and close the cabinet.

## Battery Replacement

1. Locate the battery compartment on the Sensor Communication Unit 3.0.
2. Remove the old CR3032 battery.
3. Insert a new CR3032 battery in the correct orientation.
4. Close the battery compartment securely.

## Usage

To activate the Sensor Communication Unit 3.0, press the designated button or switch as indicated on the unit.

## FAQs

### **Q: How do I know when to replace the battery?**

A: The unit will display a low battery indicator or may fail to function properly when the battery needs replacement.

### **Q: Can I use rechargeable batteries with this unit?**

A: It is recommended to use a CR3032 disposable battery for optimal performance.

**Q: How can I contact customer support for further assistance?**

A: For UK inquiries, contact Essity

UK Limited at +44 1582

677400. For North America, reach out to Essity HMS North America Inc. at 2929 Arch Street Suite 2600 Philadelphia, PA 19104.

Manufactured by Essity Hygiene and Health AB

SE-405 03 Göteborg, Sweden

Visiting address: Mölndals Bro 2, Mölndal

**UK**

Essity UK Limited

South Elds Road, Dunstable, Bedfordshire, LU6 3EJ, UK

+44 1582 677400

**North America**

Distributed by Essity HMS North America Inc

2929 Arch Street


Suite 2600

Philadelphia, PA 19104

[www.essity.com](http://www.essity.com), [www.torkglobal.com](http://www.torkglobal.com)

Made in Sweden

**Documents / Resources**

 <p>Sensor Communication Unit 3.0</p> <p>TORK</p>	<p><a href="#">TORK 3.0 Sensor Communication Unit</a> [pdf] Installation Guide 2a, 2b, 2c, 3.0 Sensor Communication Unit, Sensor Communication Unit, Communication Unit, Unit</p>
--	---

**References**

- [torkglobal.com](http://torkglobal.com) | Tork Global
- [User Manual](#)

**Manuals+**, [Privacy Policy](#)

This website is an independent publication and is neither affiliated with nor endorsed by any of the trademark owners. The "Bluetooth®" word mark and logos are registered trademarks owned by Bluetooth SIG, Inc. The "Wi-Fi®" word mark and logos are registered trademarks owned by the Wi-Fi Alliance. Any use of these marks on this website does not imply any affiliation with or endorsement.