

Torjim
SOFTBOX PHOTOGRAPHY
LIGHTING KIT



Torjim Softbox Photography Lighting Kit Instruction Manual

[Home](#) » [Torjim](#) » Torjim Softbox Photography Lighting Kit Instruction Manual 

Contents

- [1 Torjim Softbox Photography Lighting Kit](#)
- [2 INTRODUCTION](#)
- [3 SPECIFICATIONS](#)
- [4 WHAT'S IN THE BOX](#)
- [5 FEATURES](#)
- [6 SETUP GUIDE](#)
- [7 CARE & MAINTENANCE](#)
- [8 TROUBLESHOOTING](#)
- [9 PROS & CONS](#)
- [10 WARRANTY](#)
- [11 FREQUENTLY ASKED QUESTIONS](#)
- [12 References](#)

Torjim

Torjim Softbox Photography Lighting Kit



INTRODUCTION

To obtain professional lighting, the Torjim Softbox Photography Lighting Kit is essential for photographers and multimedia creators. With a high CRI of 90 for precise color rendering, this kit includes a 3000K-7500K daylight CFL lighting bulb, making it ideal for studio photography, video recording, and live streaming. The 85W CFL bulb provides steady, bright illumination that is perfect for product photography, videography, and portraiture.

Users can easily and uninterruptedly change the lighting configuration with a remote control. Flexible positioning is made possible by the height adjustment of up to five feet, and the softbox diffuser reduces harsh shadows and guarantees soft, uniform illumination. This lighting set, which costs \$49.99, is a cost-effective yet practical option for both novices and experts. This kit, which is made by Torjim and was first made accessible on April 6, 2023, is designed to improve your photography.

SPECIFICATIONS

Brand	Torjim
Price	\$49.99
Controller Type	Remote Control
Light Source Type	CFL Lighting Bulb
Color Temperature	3000K – 7500K
Wattage	85 Watts
Color Rendering Index (CRI)	90
Brightness	7500K 85W Light Bulb
Maximum Height	5 feet
Package Dimensions	17.56 x 9.37 x 6.5 inches
Item Weight	4.93 pounds
Date First Available	April 6, 2023
Manufacturer	Torjim

WHAT'S IN THE BOX

- Softbox
- 1 X Remote
- 1 X LED Bulb
- 1 X 60in Tripod Stand
- 1 X Soft Diffuser
- Manual

FEATURES

- **Superior Softbox Material:** Constructed from high-quality PET fabric, this softbox has a foldable nylon cover for even and gentle light diffusion.
- For a polished appearance, the silver particle inner baffle improves light reflection and removes harsh shadows.
- **Energy-Conserving Lighting:** Includes an 85W CFL daylight bulb, which uses up to 80% less energy than conventional lighting.
- **Adjustable Color Temperature:** Warm to cold lighting configurations are possible, ranging from 3000K to 7500K.

Variety of colors & brightness for you to choose



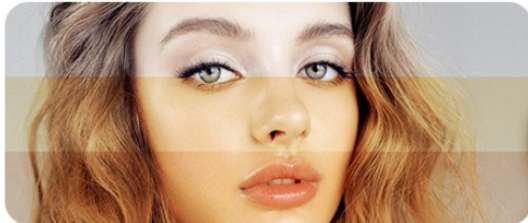
Color Temperature Range



Accurate Brightness Adjustment



7500K



4500k

3000k

100%

50%

20%

0%



- **High CRI (Color Rendering Index):** With a CRI of 90, images and videos have vivid, lifelike colors.
- **Operation via Remote Control:** Easily change the color temperature and brightness without having to physically tweak the configuration.
- **Rotatable Head:** With its 210° angle adjustment, it offers versatility for various lighting configurations and perspectives.

ADJUSTABLE SOFTBOX ANGLE

- 210° rotatable for different photographic needs -



- **Sturdy Aluminum Alloy Tripod:** Provides strong support and stability while reducing movement or vibrations during use.
- **Adjustable Height Tripod:** With a maximum height of five feet, this device accommodates various positioning requirements.



- **Soft Diffuser Included:** Produces a smooth light appearance, reduces glare, and enhances the naturalness of objects.
- **Multipurpose Use:** Suitable for product photography, live streaming, video recording, and portraiture.
- **Compact & Portable:** Simple to fold and store, making it ideal for on-location photography and travel.
- **Fast Assembly & Disassembly:** Designed for an easy setup and takedown process to enhance workflow efficiency.
- **Sturdy and Heat-Resistant Bulb:** The supplied CFL bulb maintains a low temperature to prevent overheating.

SETUP GUIDE

- **Check Package Contents:** Ensure the softbox, tripod support, diffuser, remote control, and LED bulb are included.
- **Assemble the Tripod:** Raise the tripod stand to the appropriate height and secure it with the knobs.
- **Attach the Softbox to the Stand:** Use the mounting bracket to fasten the softbox to the tripod.
- **Install the LED Light:** Carefully insert the 85W CFL bulb into the softbox socket.

- **Connect the Power Supply:** Plug the softbox into a power source to ensure proper operation.
- **Attach the Soft Diffuser:** Place the diffuser over the softbox to create uniform and smooth light.
- **Modify the Softbox Angle:** Rotate the softbox up to 210° for the ideal lighting position.
- **Use Remote Control:** Adjust the color temperature, brightness, and power settings remotely.
- **Set the Desired Color Temperature:** Adjust between 3000K (warm light) and 7500K (cool daylight) based on shooting conditions.



- **Test the Lighting Setup:** Take sample photos to ensure effective and balanced lighting.
- **Secure the Cables:** Arrange the power cord and remote receiver to prevent tripping hazards.
- **Position for Ideal Lighting:** Angle the softbox to prevent harsh shadows on your subject.
- **Employ Multiple Softboxes:** Strategically arrange additional softboxes for even illumination.
- **Verify Stability Before Use:** Ensure the softbox and tripod are securely locked into position.
- **Adapt to Shooting Needs:** Adjust the color temperature, brightness, and height for different photographic styles.

CARE & MAINTENANCE

- **Clean the Softbox Fabric Frequently:** Use a dry microfiber cloth to remove dust and dirt.
- **Prevent Water Exposure:** Keep electrical components and the softbox away from moisture.
- **Keep the Softbox Dry:** Store it in a cool, dry place when not in use to prevent damage.
- **Handle the LED Bulb Carefully:** Avoid touching the bulb directly to prevent fingerprints or damage.
- **Check Tripod Stability:** Ensure the locking knobs are tight before use to prevent swaying.
- **Avoid Overextending the Tripod:** Extending beyond the recommended height may cause instability.
- **Prevent Overheating:** Even though CFL bulbs produce minimal heat, allow them to cool before storage.
- **Replace the Bulb When Necessary:** Swap out the 85W CFL bulb if brightness diminishes.
- **Keep the Remote Control Battery Fresh:** Regularly replace the battery to maintain smooth operation.
- **Fold the Softbox Properly:** Store it carefully after use to prevent fabric wrinkles or tears.
- **Examine Cables for Wear and Tear:** Check power cords regularly for any damage.

- **Avoid Direct Sunlight:** Long exposure to sunlight can cause fabric discoloration and degradation.
- **Use a Protective Bag for Storage:** A carrying bag helps prevent dust buildup and extends the product's lifespan.
- **Handle Equipment with Care:** Avoid dropping the softbox, lightbulb, or remote to prevent damage.
- **Test Before Every Use:** Ensure all components function properly before major shoots.

TROUBLESHOOTING

Issue	Possible Solution
Light does not turn on	Ensure the power cord is properly connected
Bulb flickering	Tighten the bulb or try a different socket
Remote not responding	Check or replace the remote battery
Lighting is too dim	Increase brightness settings using remote
Softbox not staying in place	Adjust the tripod stand and tighten locks
Bulb overheating	Allow breaks during extended use
Light color seems off	Adjust color temperature settings
Remote works intermittently	Reduce distance between remote and light
Tripod stand wobbling	Place on a stable surface and secure locks
Softbox fabric wrinkled	Gently steam or leave open to smooth out

PROS & CONS

Pros	Cons
High-quality 85W CFL bulb with 7500K brightness	Bulb may take time to reach full brightness
Adjustable color temperature (3000K-7500K)	Remote range may be limited
Remote control for easy adjustments	Softbox material is delicate
Compact and lightweight for easy portability	Stand may not be ideal for outdoor use
Ideal for photography, video recording, and live streaming	Bulb replacement may require specific types

WARRANTY

The Torjim Softbox Photography Lighting Kit comes with a **1-year manufacturer warranty** covering defects in materials and workmanship. If you encounter any issues within this period, you may contact Torjim customer support for a replacement or repair.

FREQUENTLY ASKED QUESTIONS

Why is my Torjim Softbox Photography Lighting Kit not turning on?

Ensure the power cable is securely connected and the light bulb is properly installed. Try plugging it into a different outlet to test for power issues.

Why is my Torjim Softbox Photography Lighting Kit flickering?

This may be due to a loose bulb connection or voltage fluctuations. Tighten the bulb and check if the issue persists in another power outlet.

Why is the remote control of my Torjim Softbox Photography Lighting Kit not responding?

Make sure the remote control has working batteries and is within range of the lighting unit. If the issue persists, try resetting the light.

Why does my Torjim Softbox Photography Lighting Kit produce uneven lighting?

Adjust the angle of the softbox, ensure the bulb is evenly positioned, and check if the light diffuser is properly installed.

Why is my Torjim Softbox Photography Lighting Kit not reaching full brightness?

If the light appears dim, check the color temperature settings on the remote control and ensure the bulb is not nearing the end of its lifespan.

What type of light bulb is used in the Torjim Softbox Photography Lighting Kit?

The Torjim Softbox Photography Lighting Kit uses an 85W CFL daylight bulb with a color temperature range of 3000K to 7500K.

What is the maximum height of the stand included in the Torjim Softbox Photography Lighting Kit?

The stand in the Torjim Softbox Photography Lighting Kit can be adjusted up to 5 feet, allowing flexibility in lighting angles.

How is the Torjim Softbox Photography Lighting Kit controlled?

The Torjim Softbox Photography Lighting Kit is controlled via a remote control, making it easy to adjust brightness and color temperature settings.

References

- [User Manual](#)

[Manuals+](#), [Privacy Policy](#)

This website is an independent publication and is neither affiliated with nor endorsed by any of the trademark owners. The "Bluetooth®" word mark and logos are registered trademarks owned by Bluetooth SIG, Inc. The "Wi-Fi®" word mark and logos are registered trademarks owned by the Wi-Fi Alliance. Any use of these marks on this website does not imply any affiliation with or endorsement.