

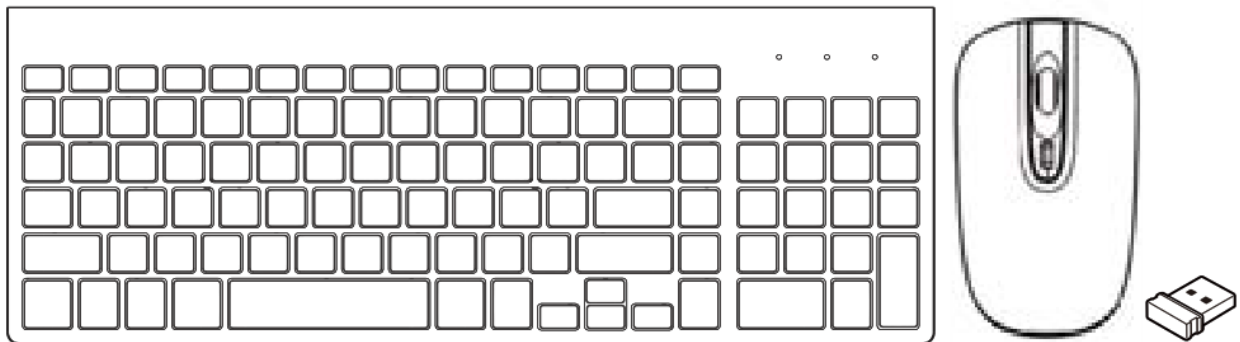


Torich TM-002 wireless keyboard and mouse set User Manual

[Home](#) » [Torich](#) » Torich TM-002 wireless keyboard and mouse set User Manual 

Torich

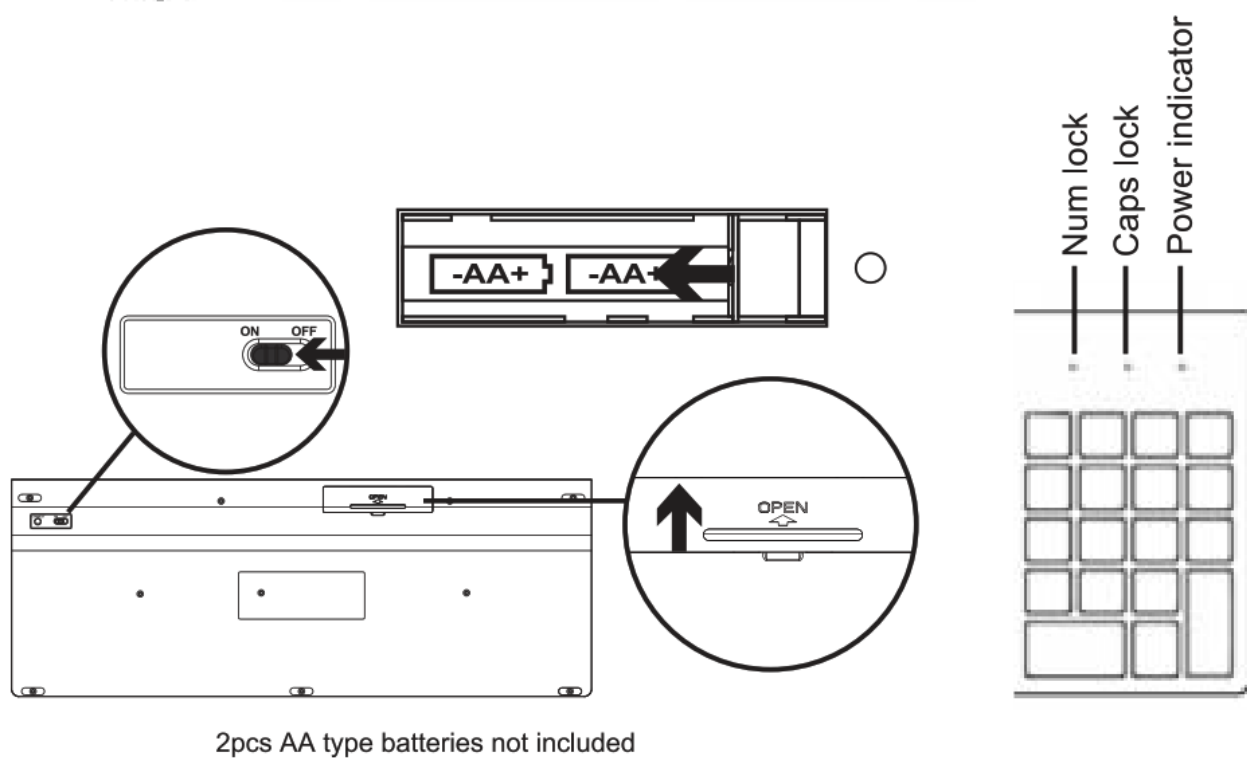
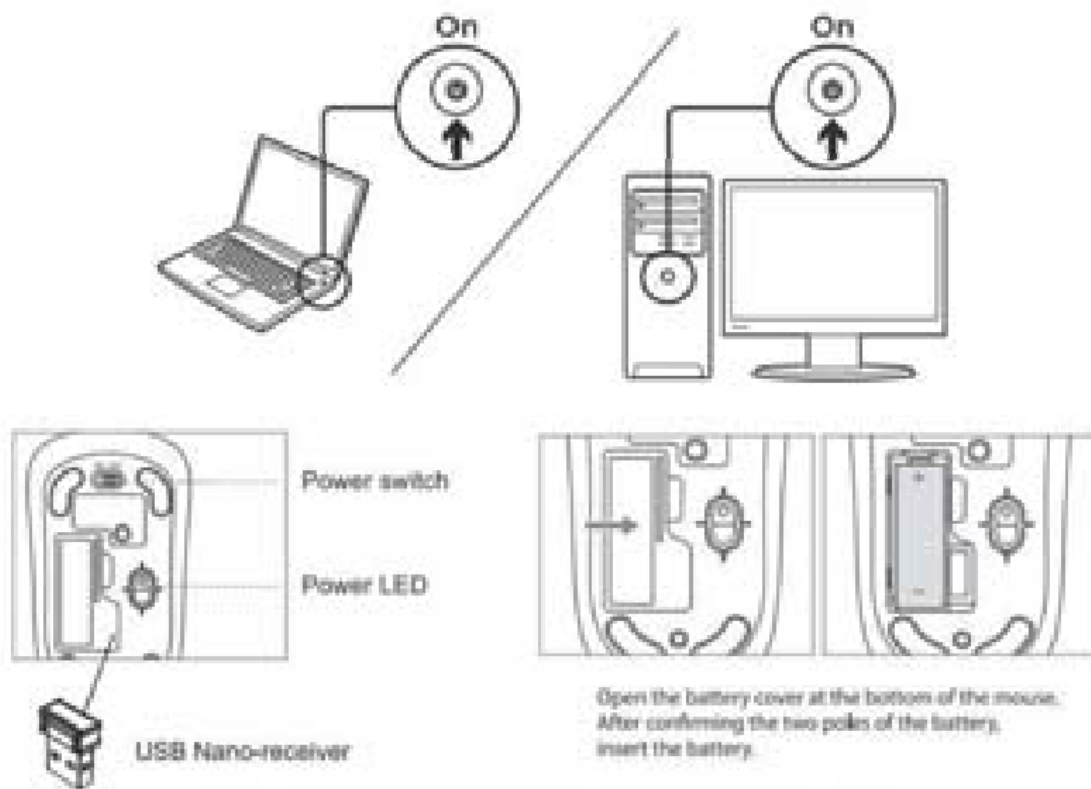
TM-002 wireless keyboard and mouse set User Manual



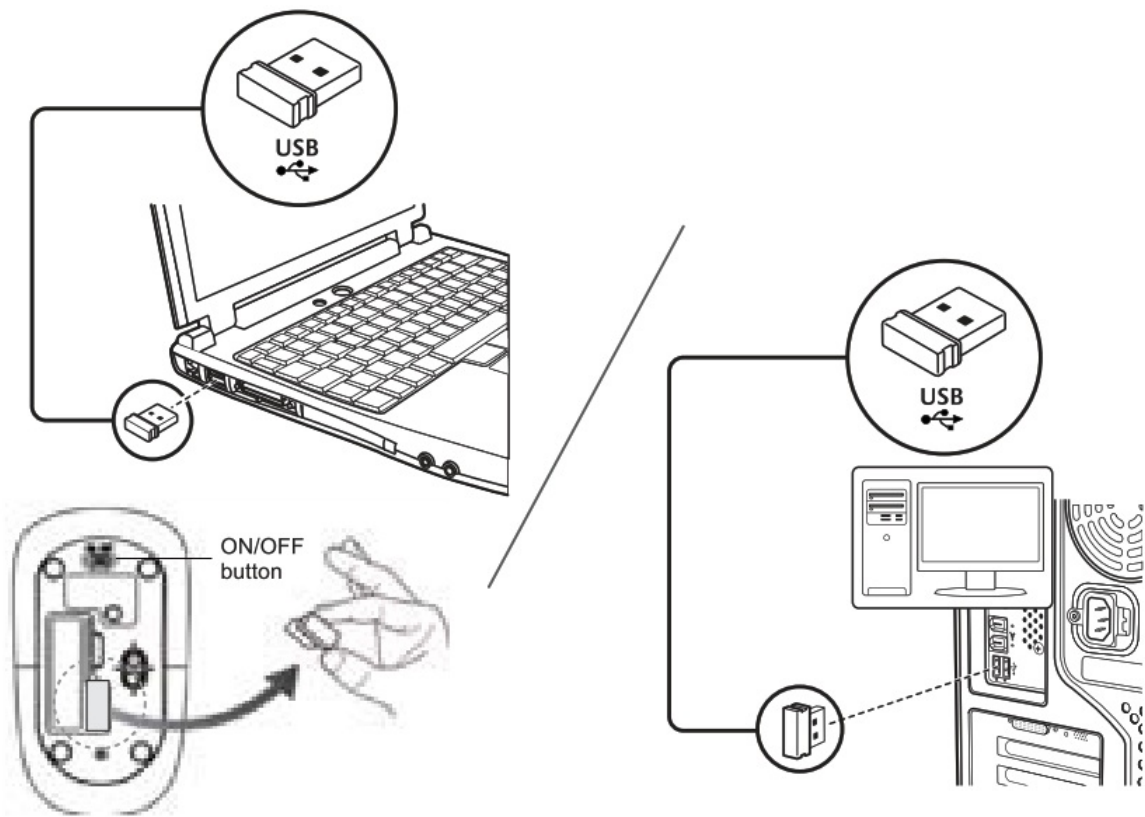
Contents

- [1 TM-002 wireless keyboard and mouse set](#)
- [2 Mouse features:](#)
- [3 Keyboard features:](#)
- [4 Troubleshooting:](#)
- [5 What's in the box:](#)
- [6 FCC Statement](#)
- [7 Documents / Resources](#)
- [8 Related Posts](#)

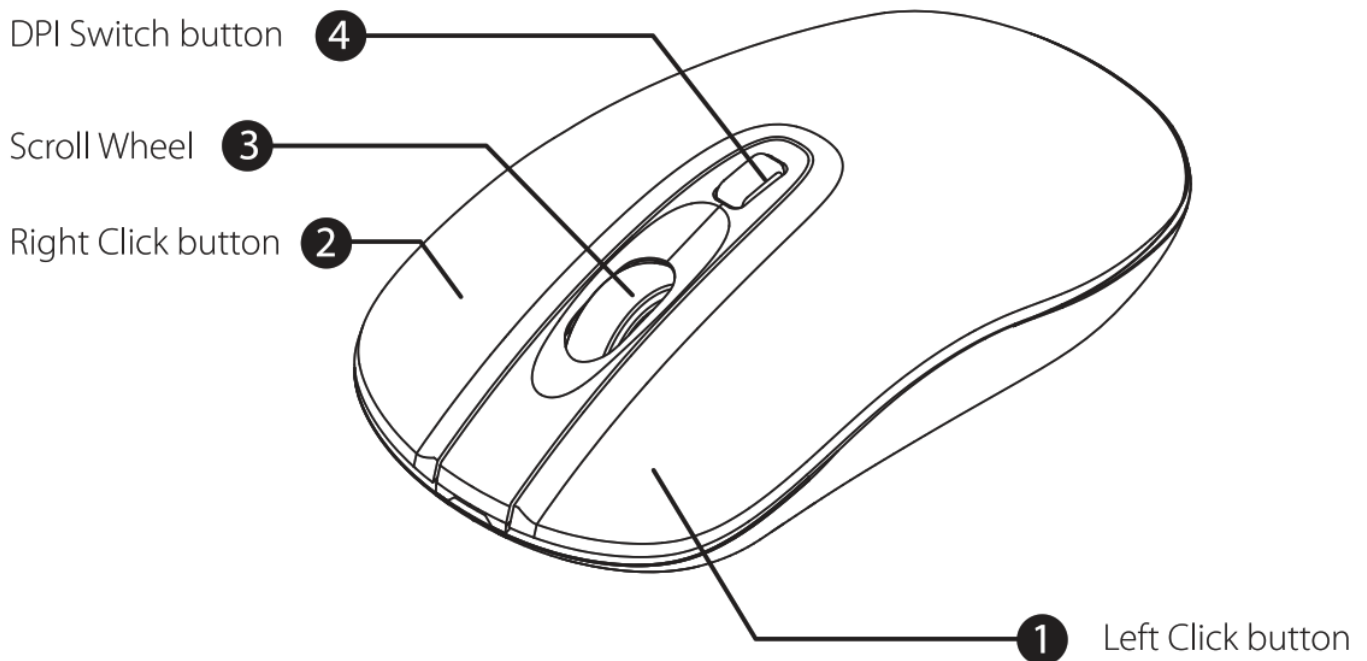
TM-002 wireless keyboard and mouse set



Take the USB nano receiver from the package and plug it into your PC or laptop; your keyboard and mouse ready for use

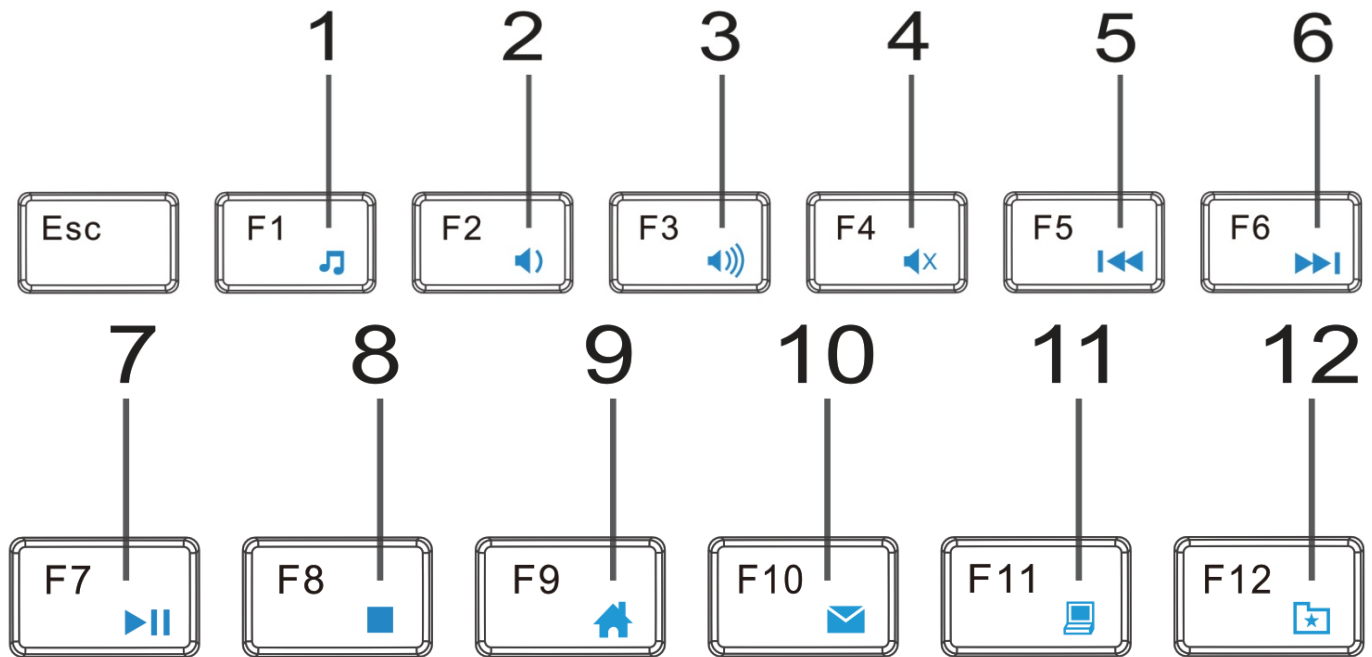


Mouse features:



1. Left click Button
2. Right-Click Button
3. Scroll Wheel
4. DPI Switch Button (dpi800/1200 /1600)

Keyboard features:



1. Music player
2. Decrease volume
3. Increase volume
4. Mute volume
5. Previous
6. Next

7. Pause/Play
8. Stop
9. Navigate to the internet home
10. Mail
11. Computer
12. Save as

Troubleshooting:

1. Wireless mouse press the DPI button to change the precision as your needs: Press the DPI button, the DPI is adjustable from 800 -1200(default) to -1600.
2. If the battery power is going to run up on the mouse, please replace it with 1 new M-type battery.
3. Trying to move the keyboard and mouse closer to the USB nano receiver. (Distance Range:10M)
4. If the keyboard power LED flashes 3s and then goes out occasionally (Low power indicating) or no indicator light when turning on the keyboard, please replace the batteries with a new one; or it will disconnect or response lagging.
5. Plug your nano receiver into some other USB port of your PC or laptop.
6. Put the AA battery(3pcs in total not included) into the mouse and keyboard in the right direction.
7. Keyboard loses connection with nano receiver:

If the power LED on the keyboard glows for 3s and then goes off, but your keyboard input is not recognized, it means the keyboard's connection to the nano-receiver has been lost. Please follow the instructions below step by step to reconnect:

1. Turn off the keyboard
2. Take the nano receiver out from the USB port
3. Press the ESC + (QWERTZ layout is keyed at the same time, then slide the switch to the ON position, and the power LED flashes for 5 seconds (the keyboard is activated). You have 5 seconds to plug and pair the receiver.

4. Plug the nano receiver back into the PC or laptop

If the Power LED flashes for 3 seconds, pairing succeeds, and if it blinks for 5 seconds, the connection failed. Repeat the pairing twice or three times if the connection is not made on the first try.

Very important:

*Please make sure to press ESC+ (QWERTZ layout is) before you turn on the keyboard;

*The LED flashes for 5s for the search, please make sure you connect the receiver to the PC during the search. When the LED dies, it means that the search is finished. If no connection is established, repeat steps 1—4 again.

*Power LED flashes red only for 3s and then goes off and the keyboard does not respond. The keyboard function is normal. All you have to do is reconnect to the receiver. Please follow the connection procedure described above.

If the red sensor LED on the button of the mouse keeps flashing but the cursor do not move, please try to pair it again as the below steps:

1. Pull out the receiver
2. Turn off the mouse
3. Then slide the switch to the ON position; the mouse is in resourcing status
4. Plug the receiver back to pc or laptop

What's in the box:

1. 1 wireless keyboard
2. 1 wireless mouse
3. 1x USB nano receiver
4. User manual

FCC Statement

NOTE: This equipment has been tested and found to comply with the limits for a Class B digital device, pursuant to part 15 of the FCC Rules. These limits are designed to provide reasonable protection against harmful interference in a residential installation. This equipment generates uses and can radiate radio frequency energy and, if not installed and used in accordance with the instructions, may cause harmful interference to radio communications. However, there is no guarantee that interference will not occur in a particular installation. If this equipment does cause harmful interference to radio or television reception, which can be determined by turning the equipment off and on, the user is encouraged to try to correct the interference by one or more of the following measures:

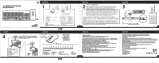
- Reorient or relocate the receiving antenna.
- Increase the separation between the equipment and receiver.
- Connect the equipment into an outlet on a circuit different from that to which the receiver is connected.
- Consult the dealer or an experienced radio/TV technician for help.

Changes or modifications not expressly approved by the party responsible for compliance could void the user's authority to operate the equipment. This device complies with Part 15 of the FCC Rules. Operation is subject to the following two conditions:

1. this device may not cause harmful interference, and
2. this device must accept any interference received, including interference that may cause undesired operation.



Documents / Resources

	<p>Torich TM-002 wireless keyboard and mouse set [pdf] User Manual</p> <p>TM-002 wireless keyboard and mouse set, wireless keyboard and mouse set, mouse set</p>
---	--

[Manuals+.](#)