

**TOPENS®**  
**TC196 Tuya WiFi**  
**Remote Control**



## TOPENS TC196 Tuya WiFi Remote Control User Manual

[Home](#) » [Topens](#) » TOPENS TC196 Tuya WiFi Remote Control User Manual 

### Contents

- [1 TOPENS TC196 Tuya WiFi Remote Control](#)
- [2 Product Information](#)
- [3 Product Usage Instructions](#)
- [4 Installation of the APP](#)
- [5 Settings of the App & Device](#)
- [6 Frequently Asked Questions](#)
- [7 FCC STATEMENT](#)
- [8 Feedback & Review](#)
- [9 Documents / Resources](#)
  - [9.1 References](#)

**TOPENS®**

**TOPENS TC196 Tuya WiFi Remote Control**



## Product Information

### Tuya WiFi Remote Control (Item No. TC196)

- Power Input: 9-24VAC/DC
- Function: Remote control for automatic gate opener
- Compatibility: iOS and Android devices

### Specifications:

- Power Input: 9-24VAC/DC
- Compatibility: iOS and Android devices

## Product Usage Instructions

### Power Supply

The TC196 can be powered by an adapter, AC-DC power supply, battery, or transformer with a power input of 9-24VAC/DC.

### Installation of the APP

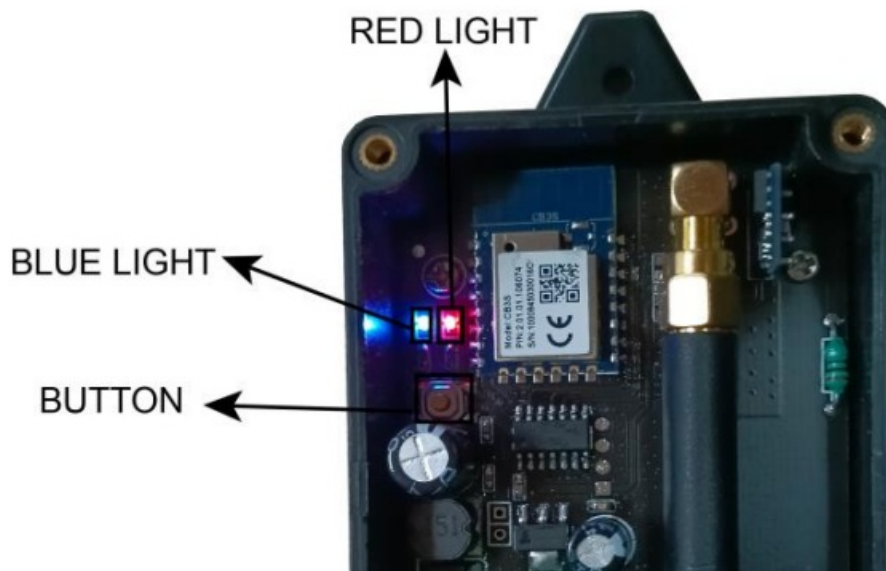
To install the app, search for TUYA Smart in the App Store (iOS) or Google Play (Android). Download and complete the installation. Note that only the owner can add the switch directly, others need to be shared access.

**Adding the WiFi Remote Control to the App and Programming it to the Gate/Door Opener** Open the app and then register. Click “Sign up”. Choose your location and input your email address to go to the next step. Remember to tick “I agree on Privacy Policy User Agreement Children’s Privacy Statement and Third Party Information Sharing List”. Please enter the verification code you get, and then set your password to complete the registration.

The registration process consists of the following steps:

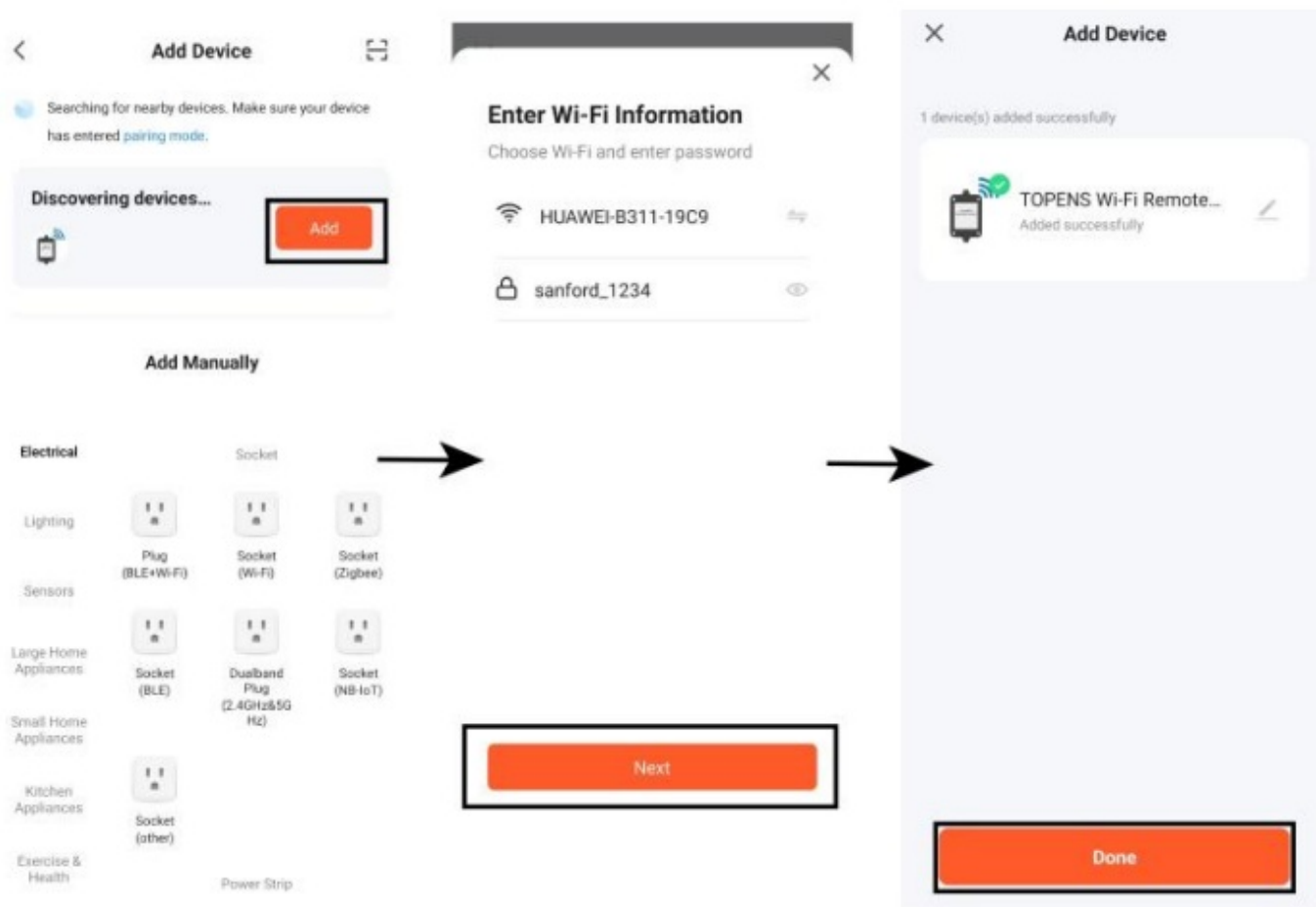
- Click "Sign Up" on the login screen.
- On the "Register" screen, select "United States of America", enter an email address (e.g., 13364@...com), and check "I Agree" to the terms and conditions. Click "Get Verification Code".
- On the "Enter Verification Code" screen, enter the verification code received via email. Click "Didn't get a code?" if needed.
- On the "Set Password" screen, enter a password (8-20 characters, mix of letters and numbers) and click "Done".

Power on the WiFi remote control, the red light will be on. Now you can configure the remote control to connect to the network (via WiFi). Login into the app and click “+” or “Add device” to add a new WiFi remote control. Make sure there is a WiFi network that your phone and the switch can be connected to. Please enable the “Nearby devices” permission and turn on Bluetooth. The APP will find the WiFi remote switch automatically. Then click “Add” to add a device. Finally, input the WiFi name and password to pairing the device. Then the phone will display that the device has been added successfully

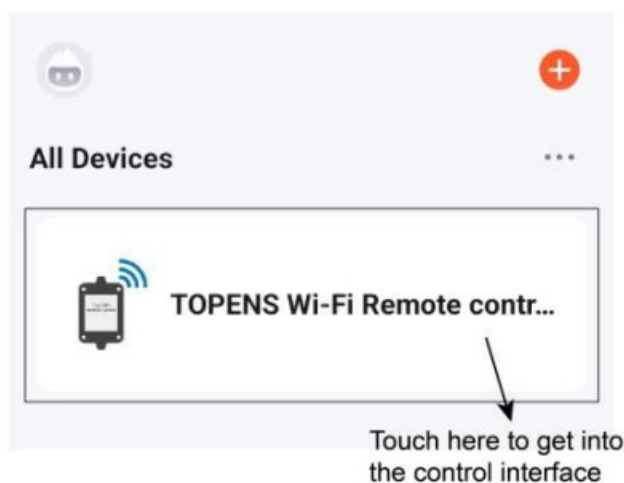


**NOTE:** If the device can not be found automatically, then you can press and hold the button and pair it again.





You can see the remote control in the app and click the WiFi remote control you have added. It will jump to the main control interface. You can operate the WiFi remote control on your phone.



On the main operation interface, you can see four buttons. These four buttons are equal to the four buttons of the gate/door opener remote control. The WiFi remote control can be programmed to control four swing gate openers or one sliding gate opener plus two swing gate openers. If you program the WiFi remote control to the sliding gate opener, the midway mode could be activated by pressing button B of the remote control when the gate is in the fully closed position. The swing gate opener does not have a midway mode.

**NOTE:** The WiFi remote control can be installed a maximum of 230 meters far away from the gate/door opener. You can use your phone to control the WiFi remote control to operate the gate/door opener after programming the WiFi remote control to it.

How to Program the WiFi Remote Control to the Opener Press and release the remote control programming button (CODE SW button, LNSW button, Learn button, etc.) on the gate opener control board, the CODE LED (REM LED, LEARN LED, LCD, etc.) will be ON or indicate the programming display, then press the A, B, C or D

button on the main operation interface of the TUYA Smart App two times. The red light on the WiFi remote control will flash 3 seconds after you press the button every time so the second time should be pressed after the red LED OFF. The CODE LED (REM LED, LEARN LED, LCD, etc.) of the gate opener will be OFF after the A, B, C, or D button is pressed for the first time, and then it will flash for 3 seconds and then to OFF or standby display after pressing the remote control button the second time. Now the remote control has been programmed successfully. NOTE: If it is not convenient to check the both LED status of the gate opener control board and TC196 at the same time, you can program the WiFi remote control to the opener just according to the LED status of the gate opener control board as the following steps

1. Press and release the remote control programming button (CODE SW button, LNSW button, Learn button, etc.) on the gate opener control board, the CODE LED (REM LED, LEARN LED, LCD, etc.) will be ON or indicate the programming display.
2. Press the A, B, C, or D button on the main operation interface of the TUYA Smart App for the first time, and the CODE LED (REM LED, LEARN LED, LCD, etc.) will be OFF.
3. Wait for 3 seconds and then press the A, B, C, or D button on the main operation interface of the TUYA Smart App for the second time. The CODE LED (REM LED, LEARN LED, LCD, etc.) will flash for 3 seconds and then to OFF or standby display. Now the remote control has been programmed successfully.

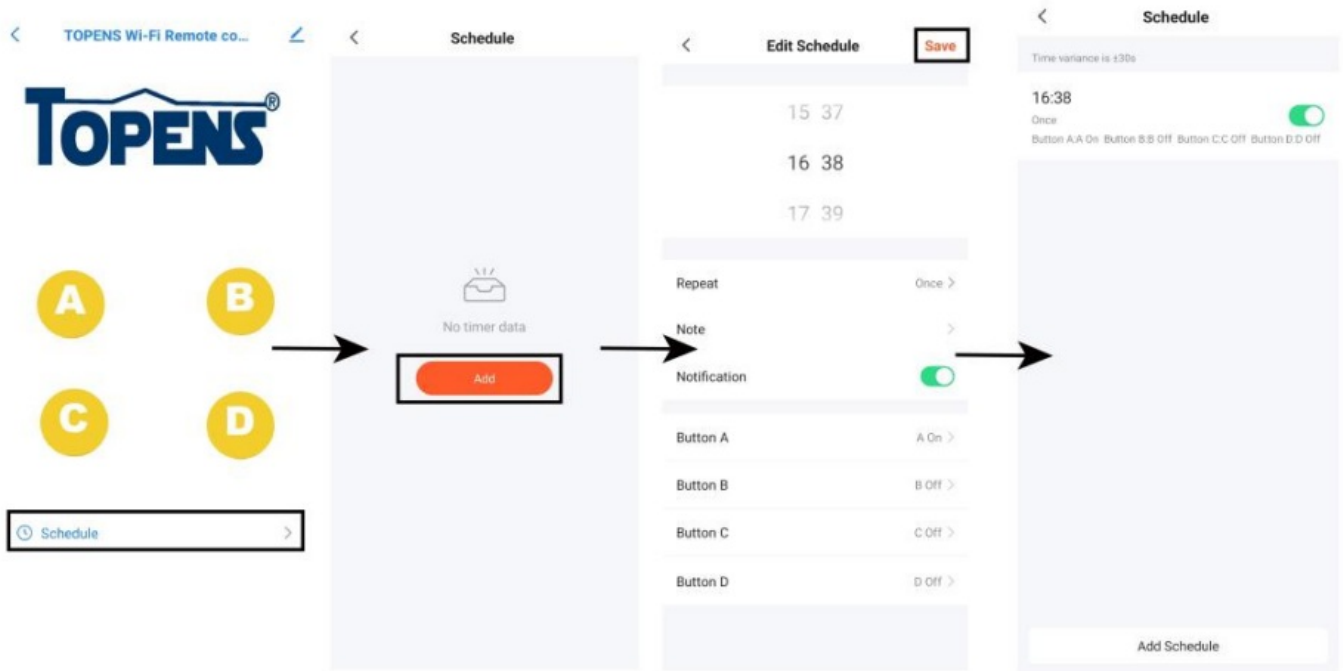


How to Erase the WiFi remote control code from the gate opener Press and hold the remote control programming button (CODE SW button, LNSWb button, Learn button, etc.) on the gate opener control board until the (REM LED, LEARN LED, etc.) from ON to OFF or LCD “dL”, and then release the button. Now all remote controls including the WiFi remote control codes have been erased from the gate opener.

## Settings of the App & Device

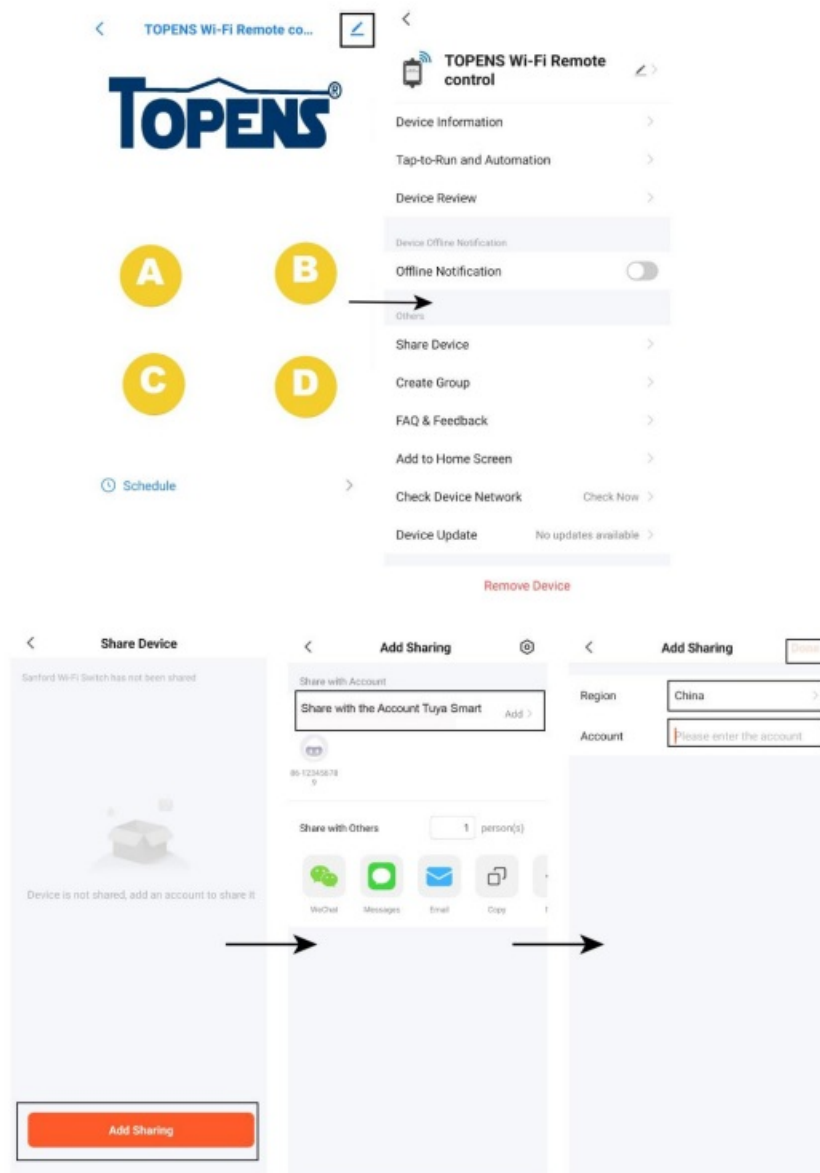
A schedule could be set to let the remote control work automatically if you want to. Click “Schedule” and then click “Add” to set a schedule. You can set the schedule as you need, then click “Save”.

**NOTE:** The schedule can only be implemented if WiFi is connected.



You can click the icon in the upper right corner to enter the setting of the device.


- You can rename the WiFi remote control, check the device information, check “Tap-to-Run” and “Automation”, and rate the WiFi remote control. You can also set device offline alerts.
- You can share the remote control with any other person. Click “Share Device” will enter sharing. Select the sharing method, you can choose third-party software or TUYA Smart. If you choose TUYA to share a device, select the country code and account to share it. The one you want to share should be installed in the app, register, and log into the app. The device will appear tonhis APP and he will have the right to control the device.




- You can create different devices in a group.
- If you have any questions, you can click “FAQ & Feedback” to inquire. You can click “More” to see more questions. If the list of issues does not have the questions you want feedback on, you can click “Unsolved? Send Feedback” for further feedback, and you can also check your feedback progress later.



<



**TOPENS Wi-Fi Remote control**



Device Information

Tap-to-Run and Automation

Device Review

Device Offline Notification

Offline Notification ☐

Others

Share Device

Create Group

FAQ & Feedback

Add to Home Screen

Check Device Network 

Check Now

Device Update 


No updates available

Remove Device


Cancel


Save

Create Group



Devices in the same group can be controlled together.

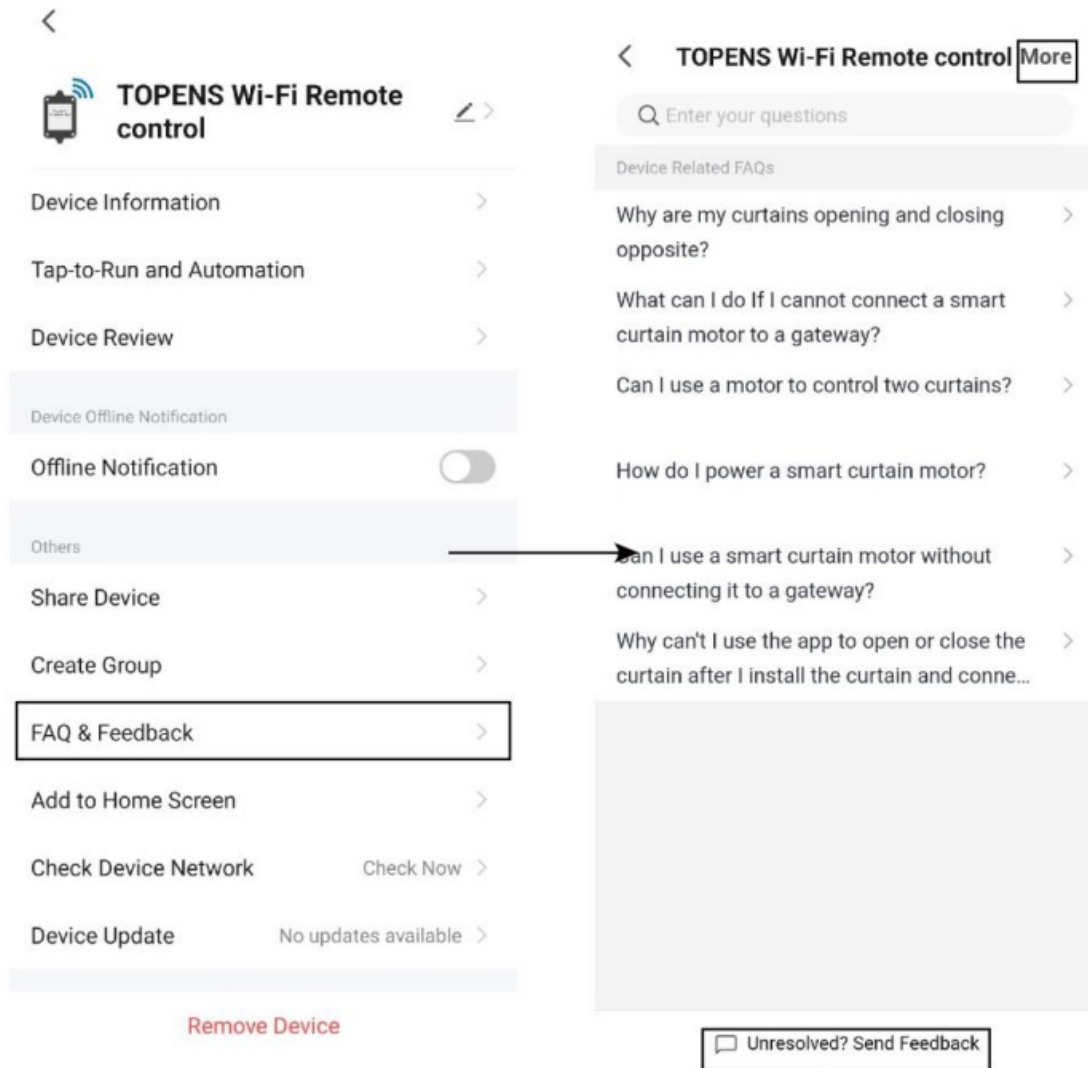




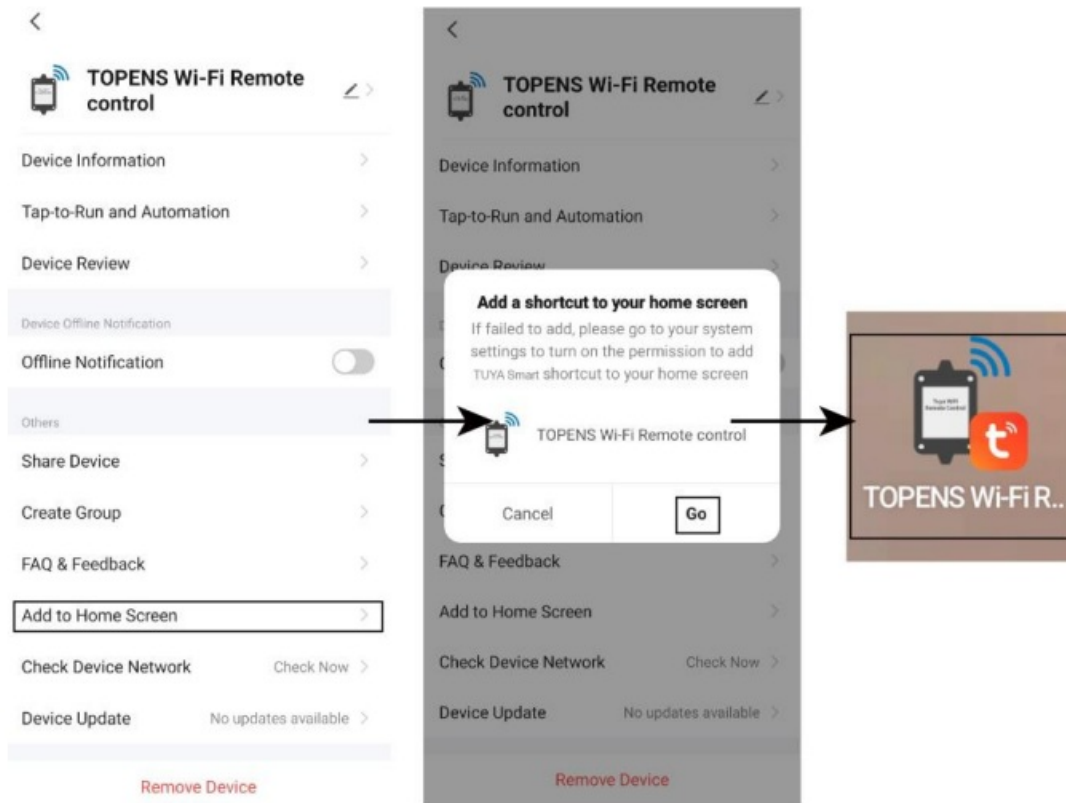
TOPENS Wi-Fi Remote co...

My home..

Devices to Be Added



- You can add a shortcut to your home screen. Click “Add to Home Screen”, please go to your system settings to turn on the permission to add the TUYA Smart shortcut to your home screen. Then you can see the shortcut on your phone.
- You can also check the device network and update the status.



## Frequently Asked Questions

### Q: Can multiple users control the WiFi remote control?

A: Only the owner can directly add the switch, while others need to be shared access by the owner to control the unit.

### Q: How do I reset the WiFi remote control if it cannot be found automatically?

A: Press and hold the button on the remote control to pair it again if it cannot be found automatically during setup.

## FCC STATEMENT

This device complies with part 15 of the FCC Rules. Operation is subject to the following two conditions:

- This device may not cause harmful interference, and
  - This device must accept any interference received, including interference that may cause undesired operation.
- Any Changes or modifications not expressly approved by the party responsible for compliance could void the user's authority to operate the equipment.

**Note:** This equipment has been tested and found to comply with the limits for a Class B digital device, under part 15 of the FCC Rules. These limits are designed to provide reasonable protection against harmful interference in a residential installation. This equipment generates uses and can radiate radio frequency energy and, if not installed and used by the instructions, may cause harmful interference to radio communications. However, there is no guarantee that interference will not occur in a particular installation. If this equipment does cause harmful interference to radio or television reception, which can be determined by turning the equipment off and on, the user is encouraged to try to correct the interference by one or more of the following measures:

- Reorient or relocate the receiving antenna.

- Increase the separation between the equipment and the receiver.
- Connect the equipment to an outlet on a circuit different from that to which the receiver is connected.
- Consult the dealer or an experienced radio/TV technician for help.
- This equipment complies with FCC radiation exposure limits set forth for an uncontrolled environment. This equipment should be installed and operated with a minimum distance of 20cm between the radiator & your body.

## Feedback & Review

Your comments and suggestions are important to us as they help us provide the best possible service. Should you have any need to contact us, the info below will help you get in touch:

**SCAN:**




**TOPENS Website:** [www.topens.com](http://www.topens.com)

**Contact Us: E-mail:** [support@topens.com](mailto:support@topens.com)

Kindly include your Product Model, Purchasing Date & Site, Order #, and your contact information. All your concerns will be replied within 24 hours.

**Tel:** +1 (888) 750 9899 (Toll Free USA & Canada)

## Documents / Resources

	<p><b><a href="#">TOPENS TC196 Tuya WiFi Remote Control</a></b> [pdf] User Manual</p> <p>TC196, TC196 Tuya WiFi Remote Control, Tuya WiFi Remote Control, WiFi Remote Control, Remote Control, Control</p>
---	--

## References

- [User Manual](#)

This website is an independent publication and is neither affiliated with nor endorsed by any of the trademark owners. The "Bluetooth®" word mark and logos are registered trademarks owned by Bluetooth SIG, Inc. The "Wi-Fi®" word mark and logos are registered trademarks owned by the Wi-Fi Alliance. Any use of these marks on this website does not imply any affiliation with or endorsement.