



TOPENS TC186 WiFi Surveillance Built-in Relay Switch Camera User Manual

[Home](#) » [Topens](#) » TOPENS TC186 WiFi Surveillance Built-in Relay Switch Camera User Manual 

*TOPENS TC186 Wi-Fi Surveillance Built-in
Relay Switch Camera User Manual*



User Manual of the WiFi Surveillance Camera Built-in Relay Switch (Model: TC186)

Contents

- 1 1. Specifications
- 2 2. Installation of the APP
- 3 3. Installation of the Micro SD card
- 4 4. Wire connection with the Gate/Garage Door Opener
- 5 5. Wire connection with the Automatic Industrial Equipment by controlling the power supply directly
- 6 6. Wire connection with the Automatic Industrial Equipment with remote control terminals
- 7 7. How to Add the Camera to the Android Phone
- 8 8. How to Add the Camera to the iOS Phone
- 9 9. How to Use the Camera to Activate the Gate Opener & the Industrial Equipment with Remote Control Terminals
- 10 10. How to Use the Camera to Control the Power Supply of the Industrial Equipment Directly
- 11 11. How to Share the Camera with Other Users
- 12 12. Other functions
- 13 Documents / Resources
 - 13.1 References
- 14 Related Posts

1. Specifications

- Pixel and resolution: 2M pixel (1080P)
- Network connection: WIFI
- Sensor and lens: CMOS, 6mm
- Night vision mode: ICR infrared filter type
- Night vision distance: 15m
- Working mode: Toggle or Self-hold Selectable
- Maximum capacity of the Relay Contact: 10A/250VAC 10A/30VDC

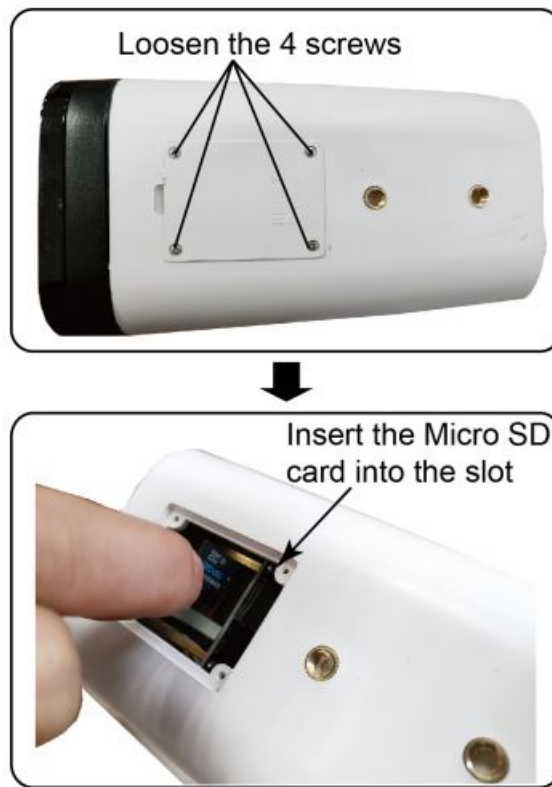
2. Installation of the APP

You can search “LinkCraft” in [Google Play](#) or iOS [APP store](#) to download & install the APP.

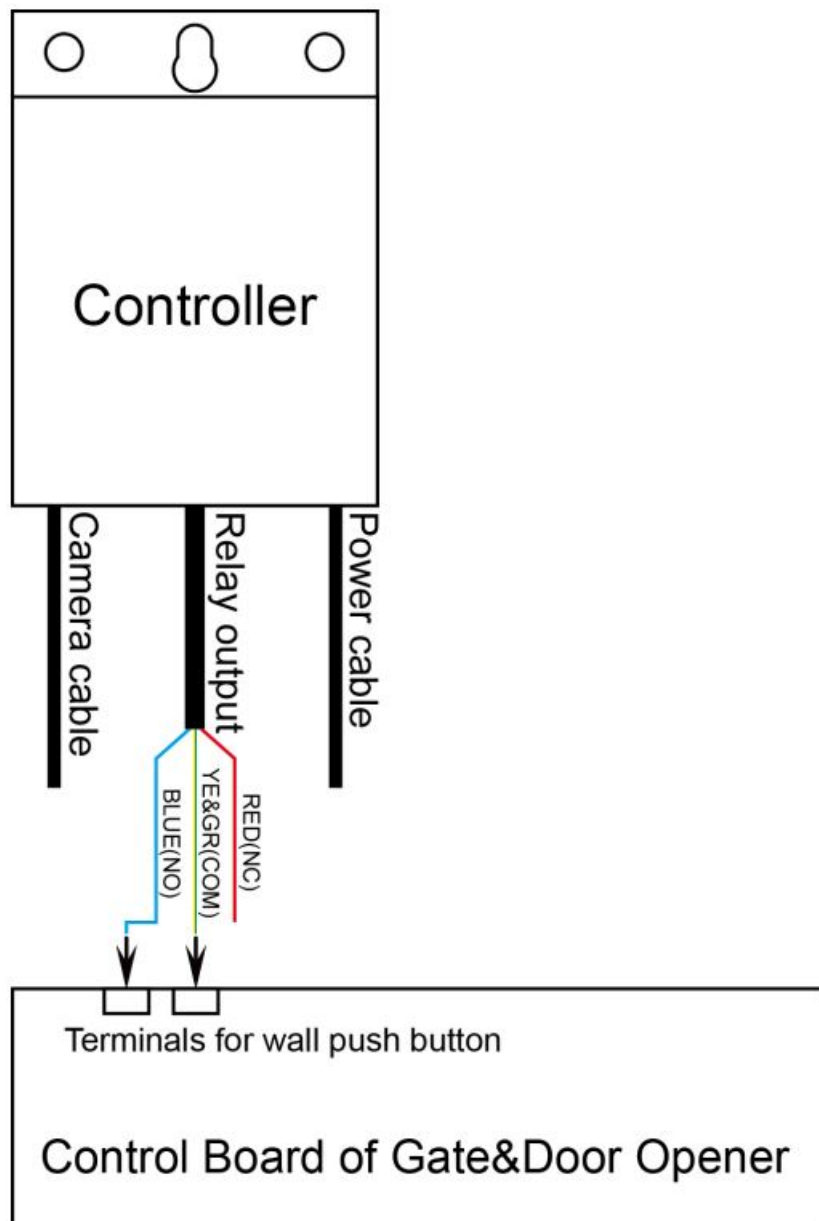
3. Installation of the Micro SD card

The camera supports an optional Micro SD card which storage could be up to maximum 128GB. You can install the Micro SD card to recording the monitoring video in the local card. You can find 4 screws on the bottom cover. Loosen the 4 screws and you’ll find a card slot. Insert the Micro SD card into the card slot and then fix the little plate back to the bottom cover to complete installation.

NOTE: The Micro SD card will record the monitor video after about 5 minutes when it’s installed into the camera at the first time.



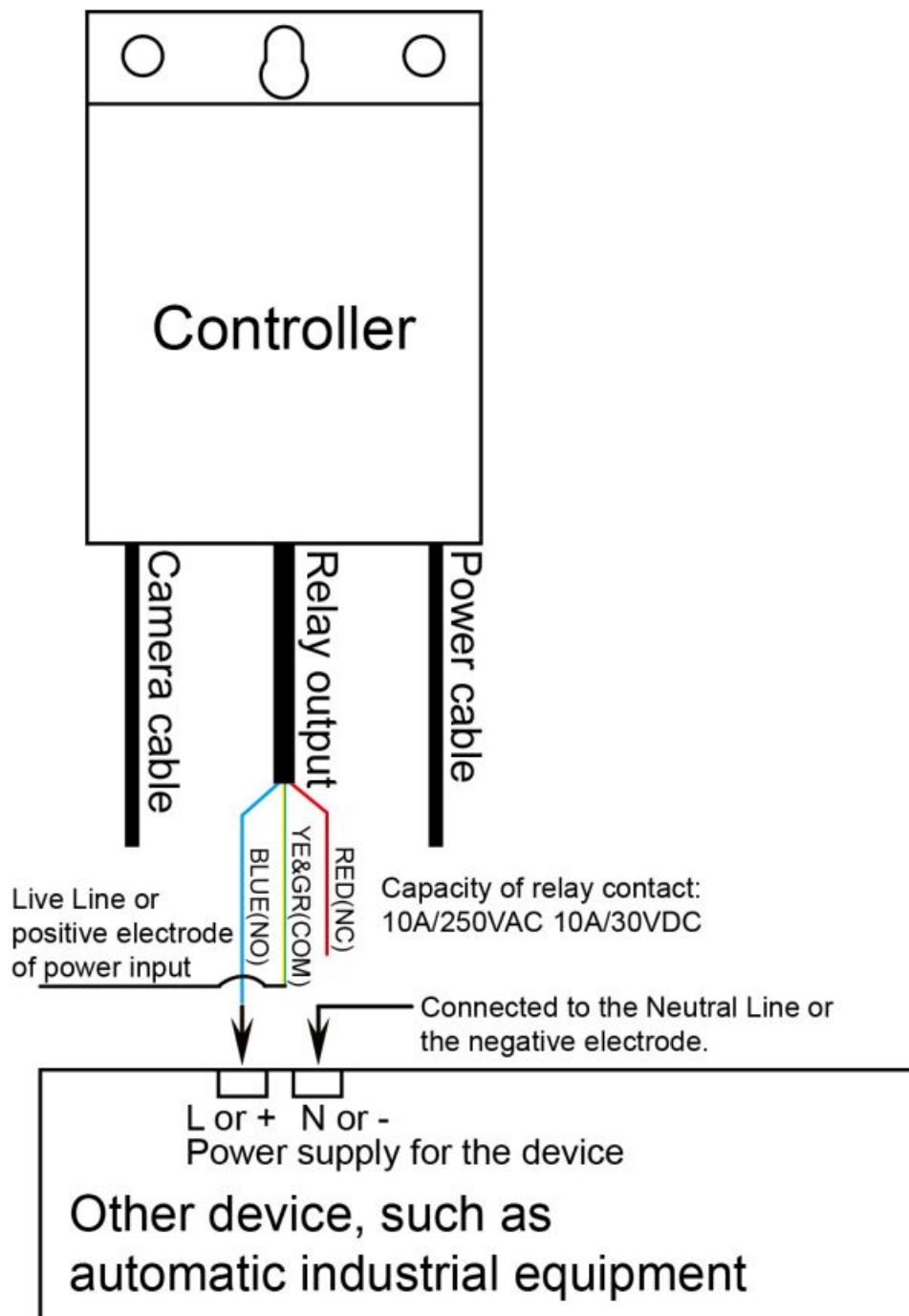
4. Wire connection with the Gate/Garage Door Opener



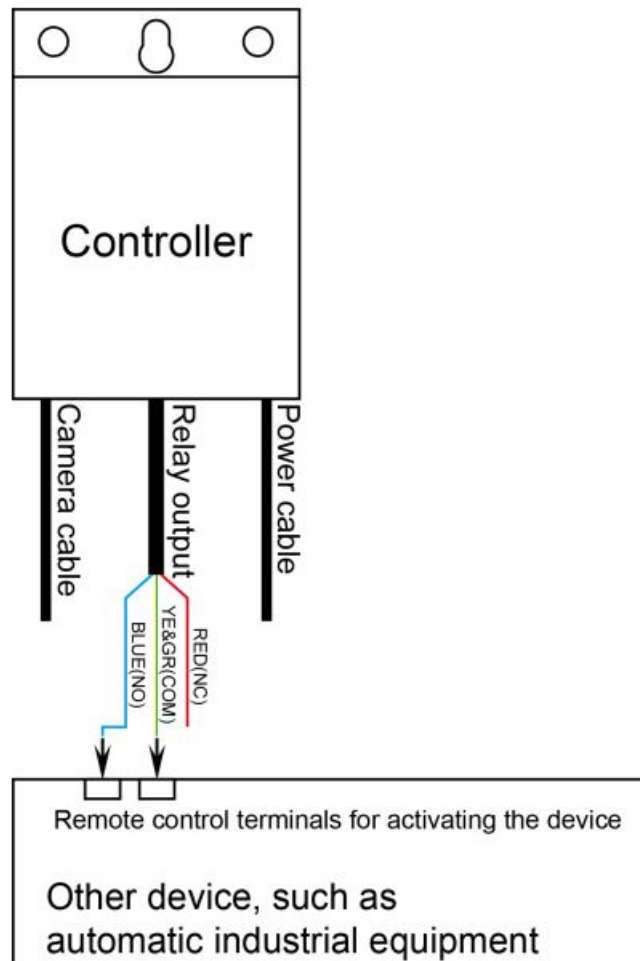
You can connect the BLUE wire and the YELLOW&GREEN wire to the exit or push button terminals of the control board (no matter the polarity) to activate the gate opener.

5. Wire connection with the Automatic Industrial Equipment by controlling the power supply directly

You can connect the YELLOW&GREEN wire (COM) to the LIVE LINE (or positive electrode of power input) and connect the BLUE wire (NO) to LIVE (or positive) power supply terminal of the equipment respectively. The Neutral power supply terminal of the equipment can be connected to the Neutral Line directly. You can set the camera to control the equipment via a timer (7 days * 24 hours).



6. Wire connection with the Automatic Industrial Equipment with remote control terminals

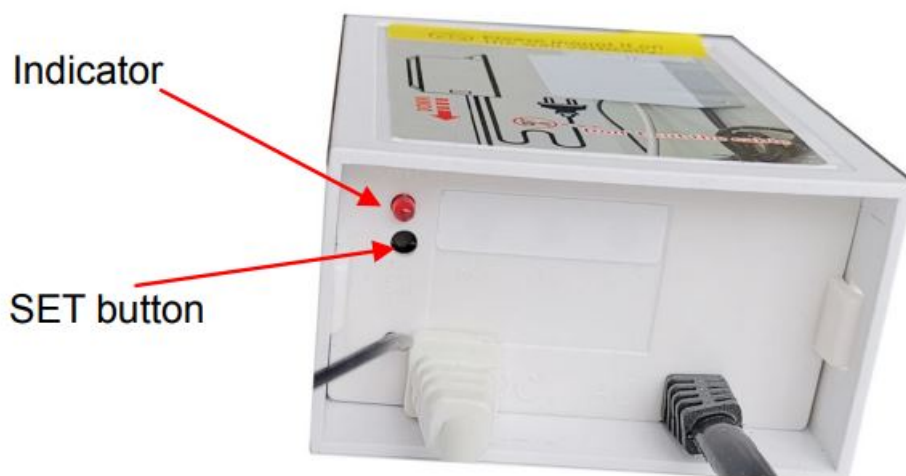


You can connect the BLUE wire and the YELLOW&GREEN wire to the wired remote control terminals of the equipment to control it via the camera.

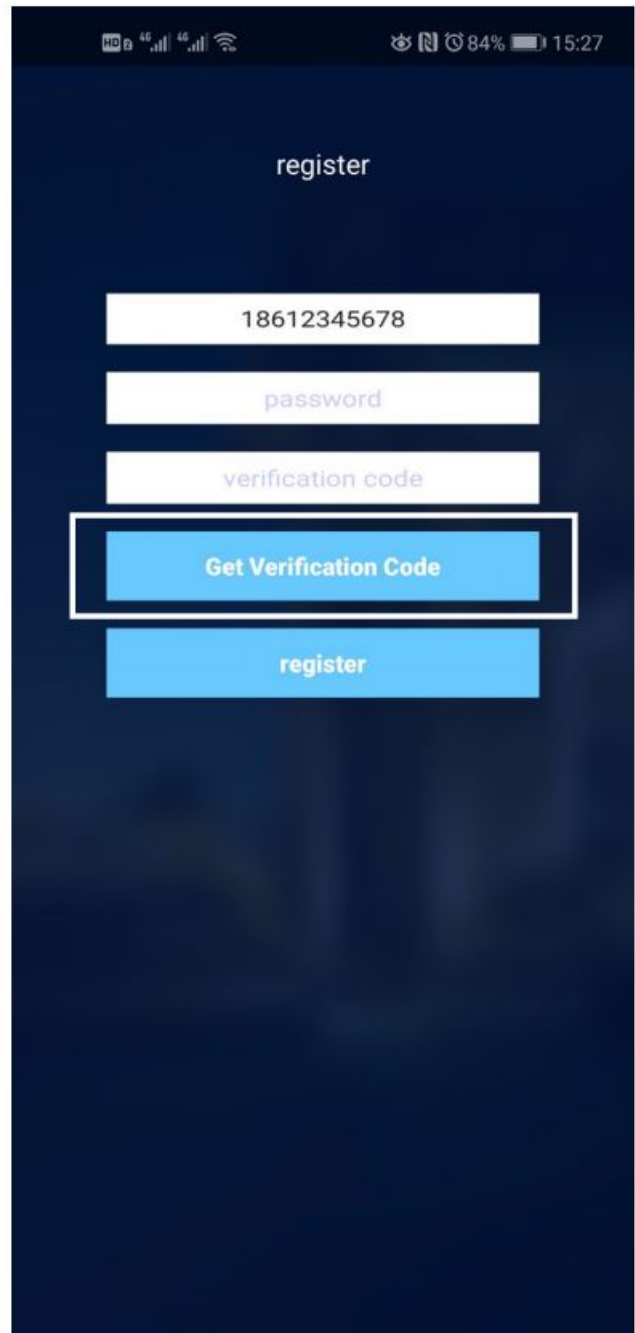
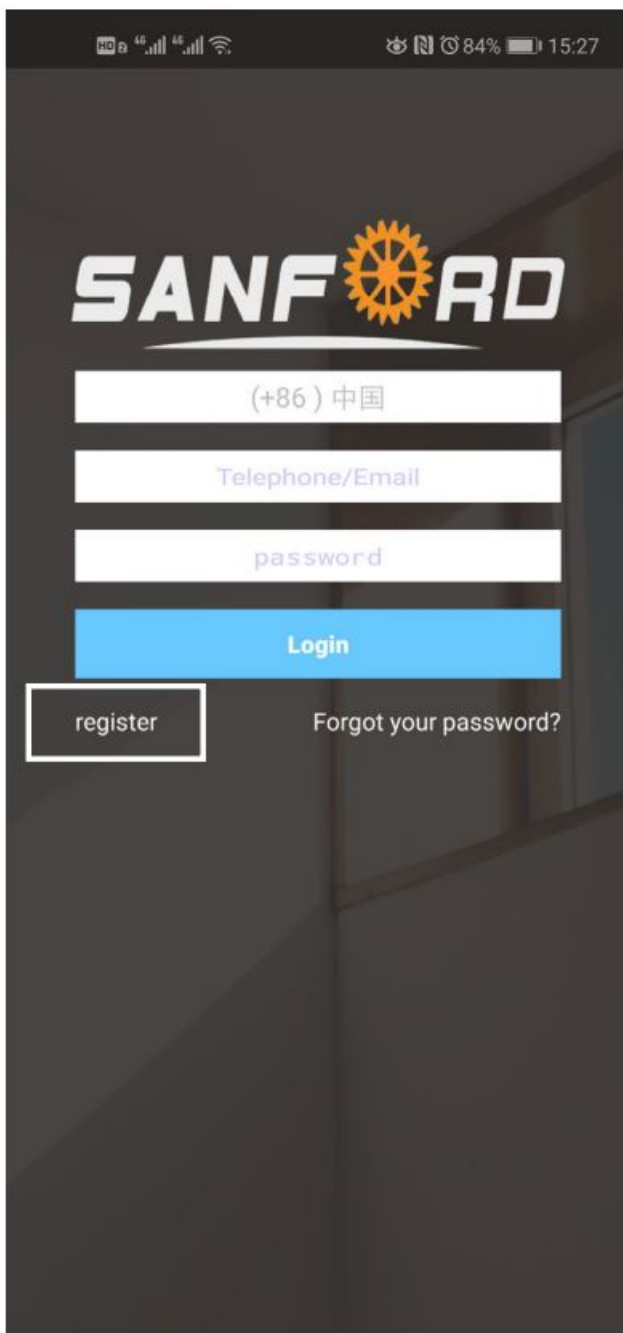
7. How to Add the Camera to the Android Phone

NOTE 1: The camera can access the network via ONLY WIFI. This can avoid running the wire.

NOTE 2: You must finish the configuration in 5 minutes, or the camera will quit the configuration automatically after that. Max. 50 cameras can be added to your phone.

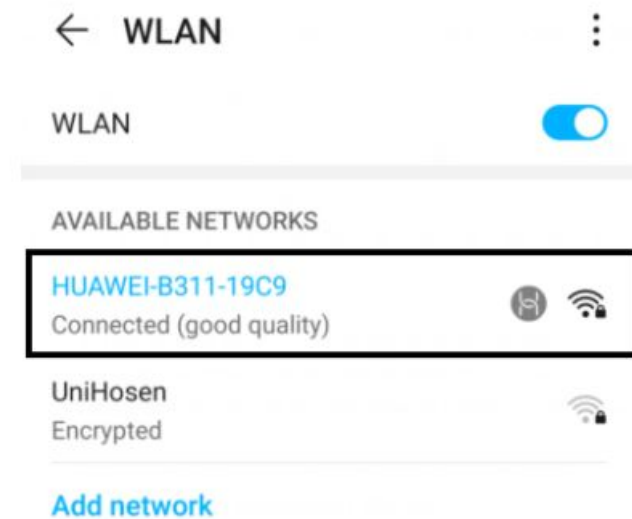


7.1 Open the APP and then click "register" to register a user account. Input your mobile phone number or your email address and set you own account password. Click "Get Verification Code" to send a code to your phone or your email box. Please input the received code to the blank bar of "Verification code". Finally click "register" to complete the registration.

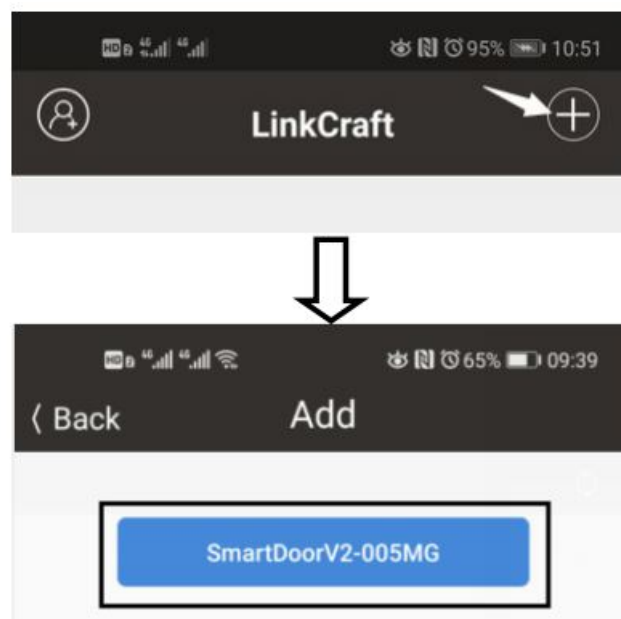


NOTE 1: The APP will recognize the Country Code of the SIM card of your phone. There is no need to input the Country Code when registering.

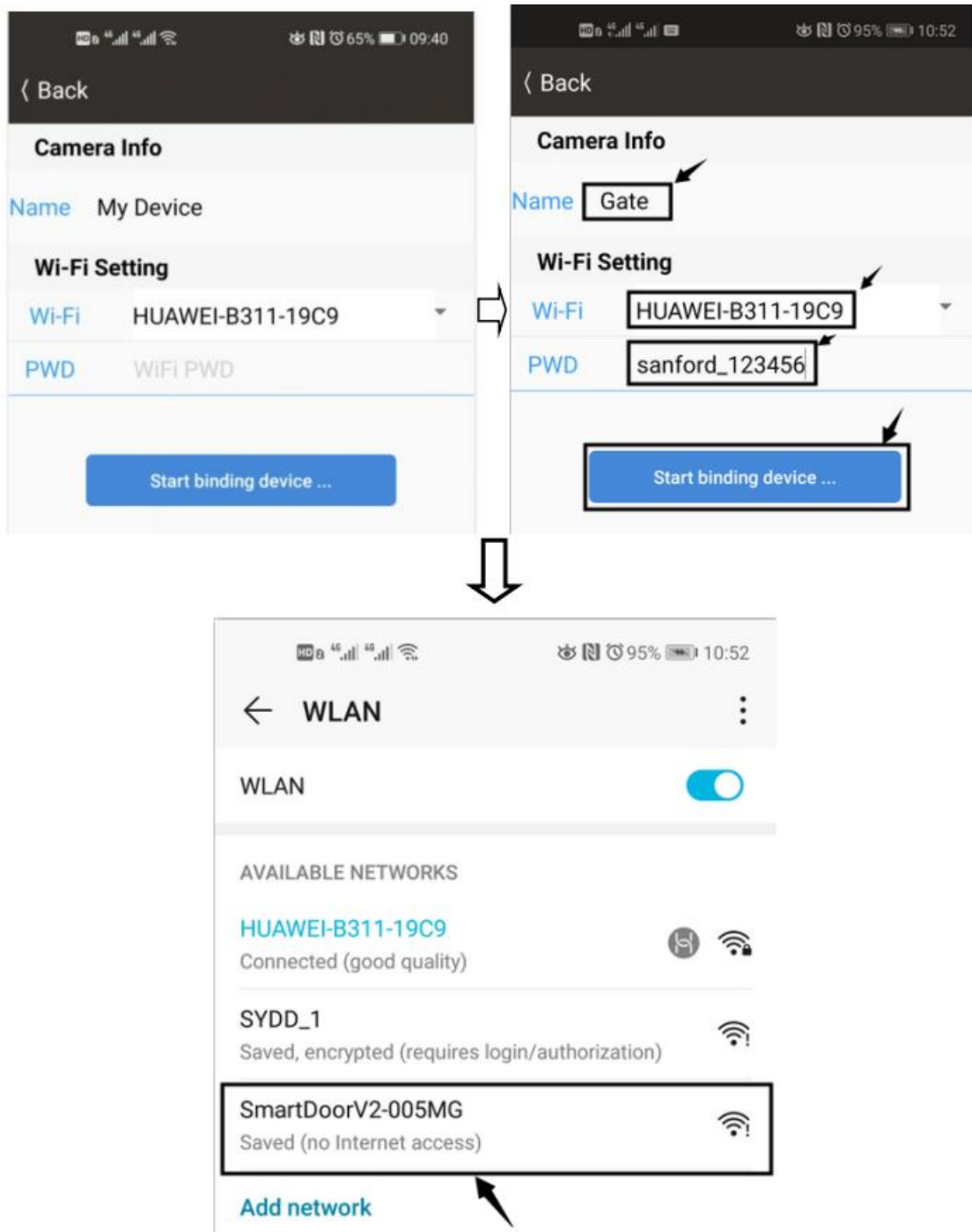
- 7.2 Ensure there is a WIFI network is available for your phone & the WIFI camera and the phone has been accessed into the WIFI network before configuring.



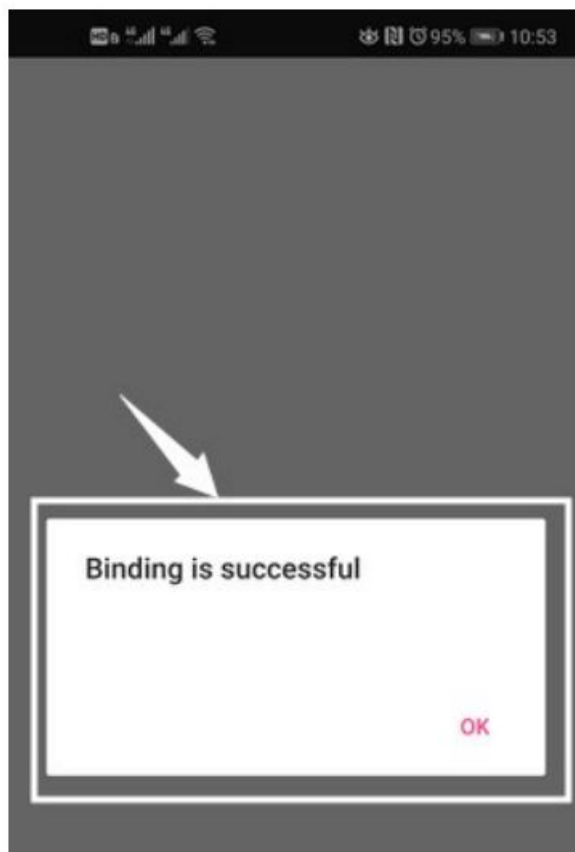
- 7.3 Power on the camera. Indicator will flash RED and GREEN light alternately slowly (1 second/once). Use a sharp tool to press and hold the SET button for more than 2 seconds until the indicator RED and GREEN light alternately quickly (0.5 second/once) and then release.
- 7.4 Login into the app and then click “+” to add a new WIFI camera. The APP will find the camera automatically.



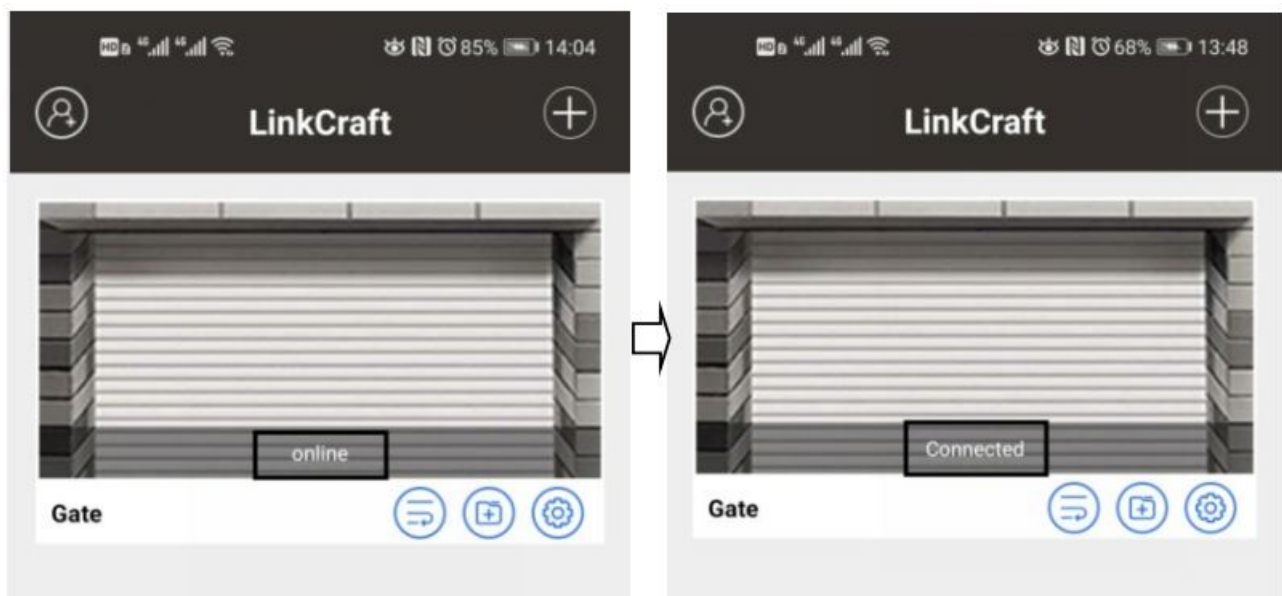
- 7.5 Click the device and it will jump to the WIFI configuring interface. And then you can re-name the camera if you want. Then input the WIFI name& password and then click “Start binding device..”. And then the phone will jump to the WLAN network connecting interface. Find the “SmartDoorV2-XXXXX” WLAN network (XXXXXX is the device ID, it should be correspondence with the ID labeled on the cover of the camera) and connect it to send the configuring parameters to the camera.



- 7.6 Click “BACK” function button of the phone to return to the “LinkCraft” APP once the WLAN network switch back to the WiFi network which you intend to use for the camera. And the APP will display a dialog box of “Binding is successful”.



- 7.7 Click “OK” to jump to the camera display interface after the binding is successful. After waiting for a few seconds, the “online” status will turn to “Connected” which indicates that the camera is properly connected to the network. You can’t touch the device to get into the main control interface until the status turns to “Connected”.



8. How to Add the Camera to the iOS Phone

- 8.1 Register a user account and login into the APP refer to step 7.1 and ensure your phone has been connected to a valid WiFi network similar as step 7.2.
- 8.2 Power on the camera. Indicator will flash RED and GREEN light alternately slowly (1 second/once). Use a sharp tool to press and hold the SET button for more than 2 seconds until the indicator RED and GREEN light alternately quickly (0.5 second/once) and then release.

- 8.3 Login into the app and then click “+” to add a new WiFi camera. The APP will notify you to jump to the WiFi setting to connect the WiFi of the camera.



Please select the wireless network of SmartDoor-0XXXX in Settings -> Wireless LAN -> Select Network. After successful link, return to this APP



- 8.4 Jump to the Wi-Fi settings according to the notification. Find the WiFi name of Smart Door-xxx and then connect it. Go back to the APP after connecting successfully. And then you can input the WiFi password for the camera. Click binding device to confirm. The APP will pop up a binding success dialog and also the camera will display in the APP. After waiting for a few seconds, the status will turn to “connected”, now you can get into the main control interface to control it.

Settings



Apple ID, iCloud, iTunes & App Store



Airplane Mode



WLAN

HUAWEI-B311-19C9



Bluetooth

On



Cellular



Personal Hotspot

Off



< Settings

WLAN

WLAN



✓ HUAWEI-B311-19C9



CHOOSE A NETWORK...

SmartDoorV2-00522



Other...



< Settings

WLAN

WLAN



✓ SmartDoorV2-00522

No Internet Connection



CHOOSE A NETWORK...

HUAWEI-B311-19C9



Other...



Go back to the LinkCraft APP to input the WiFi password 10

中国移动 4G 1:56 PM

<

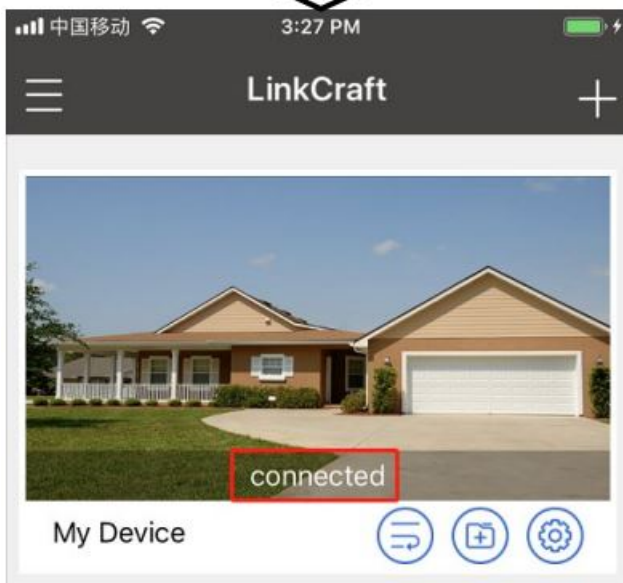
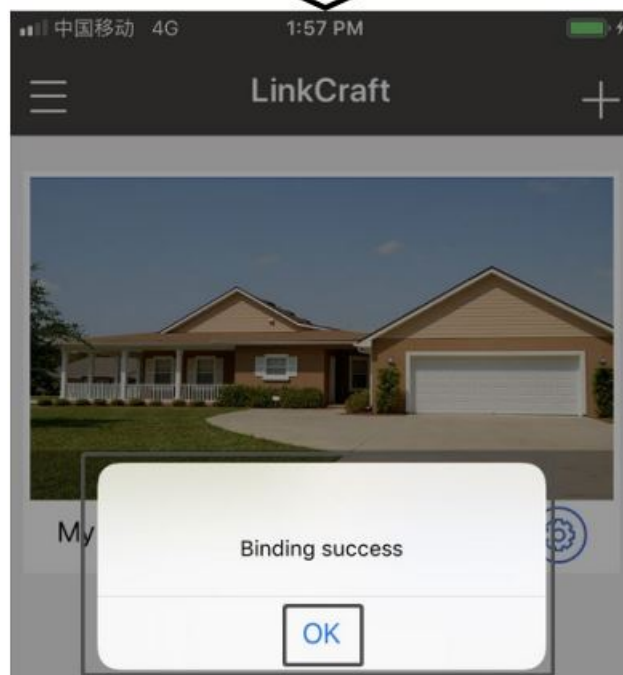
Device Information [D5WGDSM5X3000522]

name: My Door

Wireless Network Settings

WiFi HUAWEI-B311-19C9

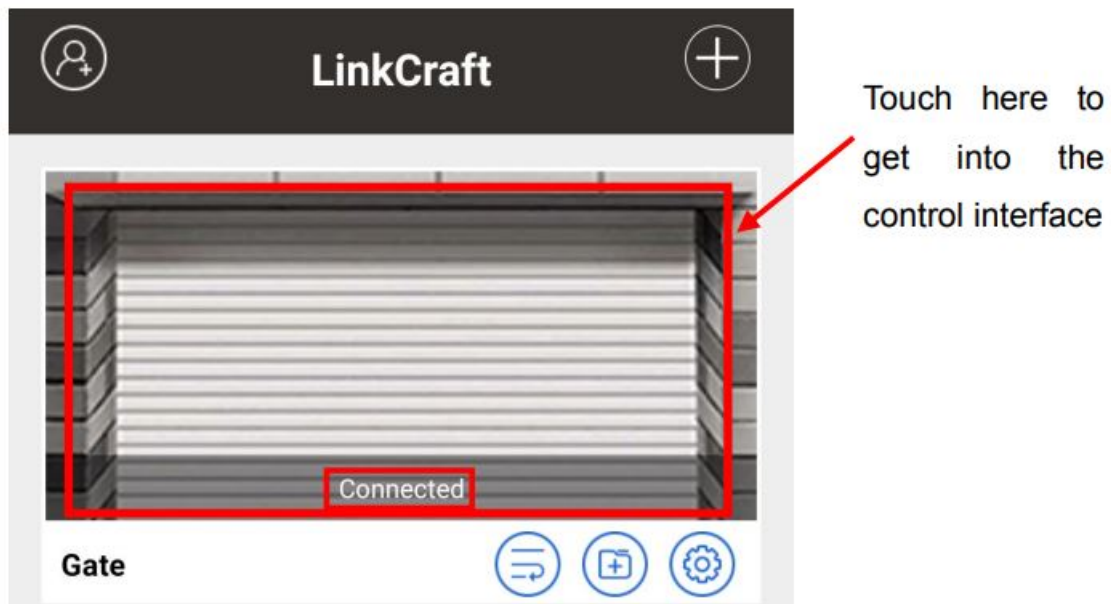
password:



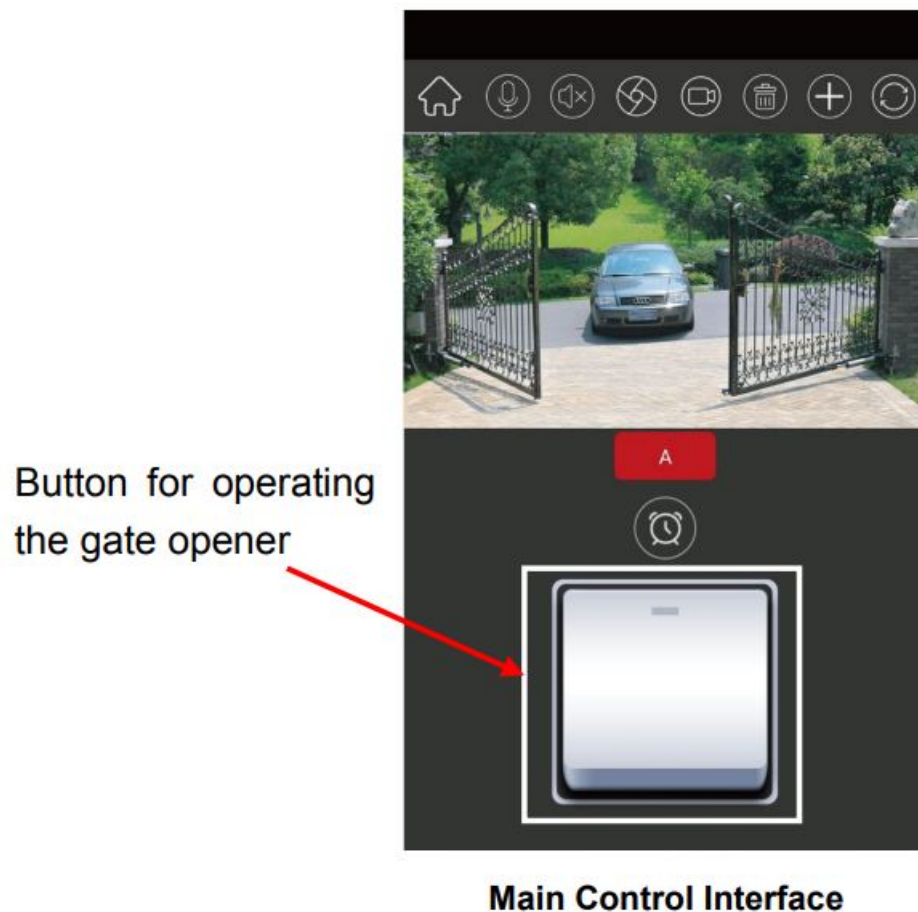
9. How to Use the Camera to Activate the Gate Opener & the Industrial Equipment with Remote Control Terminals

NOTE: Please ensure the camera has been connected to the gate opener or the equipment as Chapter 4 or 6 wiring diagram before activating the gate opener.

- 9.1 Click the camera to enter the monitor display and control interface when the status displays “Connected”.

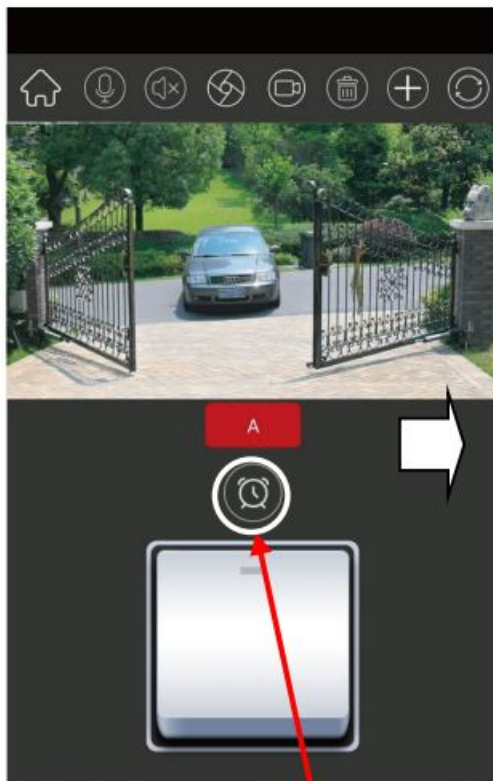


- 9.2 You can press the push button on the main control interface to activate the gate opener or the industrial equipment.

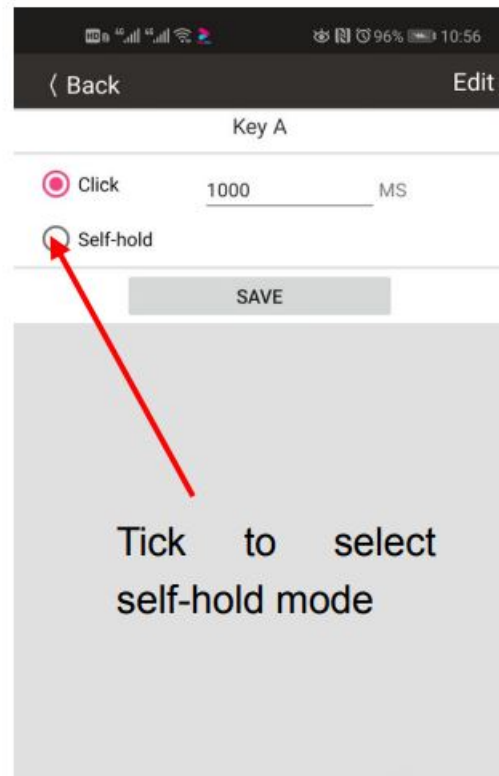


10. How to Use the Camera to Control the Power Supply of the Industrial Equipment Directly

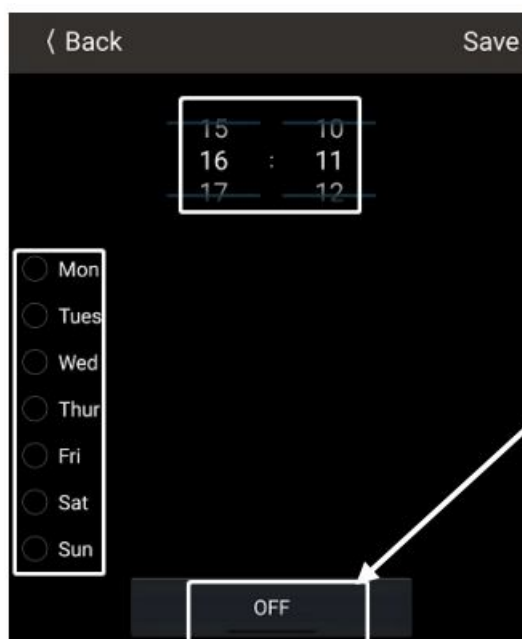
- 10.1 Click the camera to enter the monitor display and control interface when the status displays “Connected” (Refer to step 9.1).
- 10.2 You can press the timer setting icon on the main control interface to set the working mode of the switch to self-hold mode (The switch will hold the status once you press down the control button). The output of the relay switch will be always on or off according to the status of the push button.



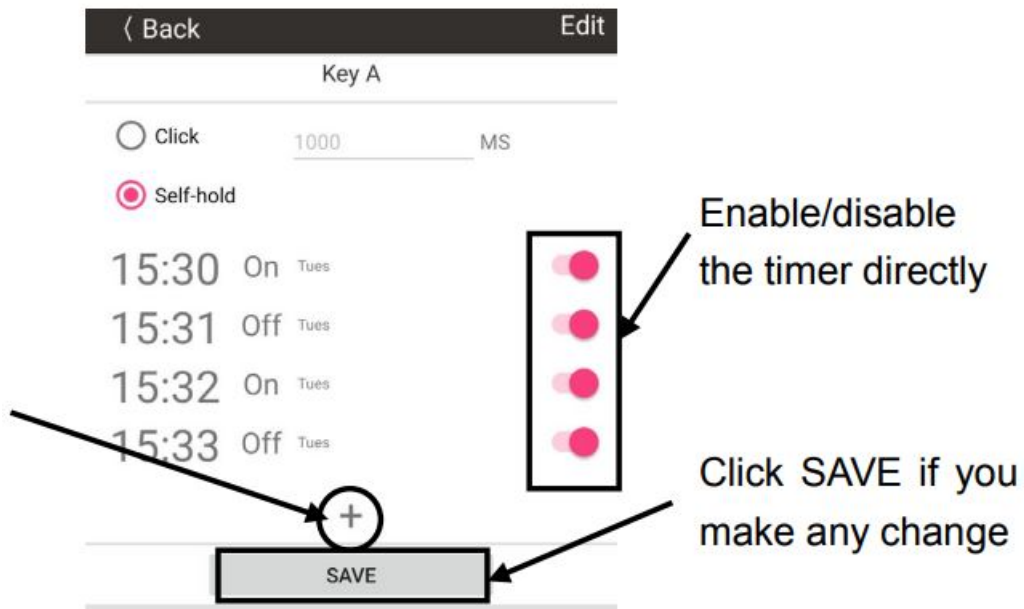
Timer setting icon



- 10.3 You can also set the timer (7*24Hours) to power on/off the device automatically according to the setting.

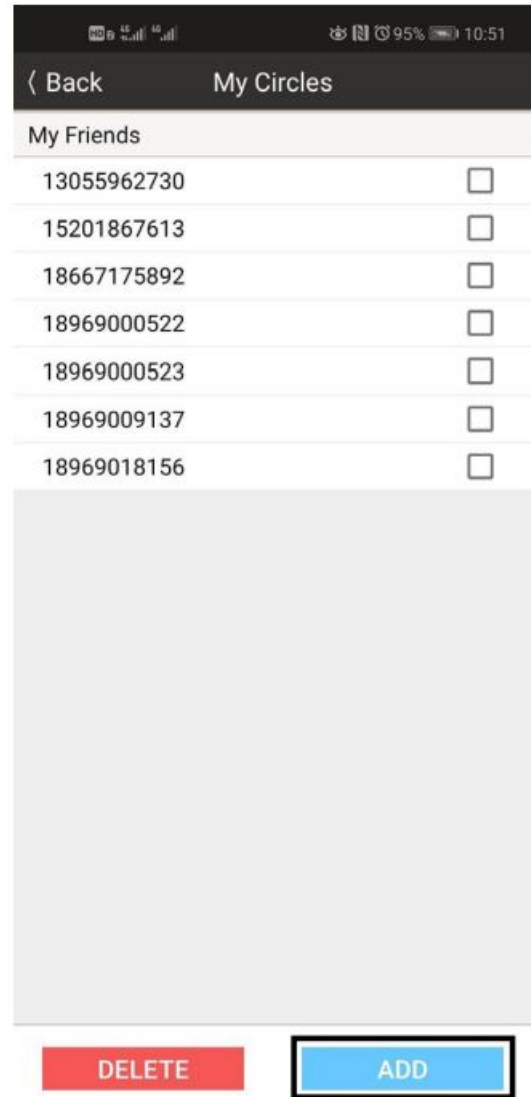
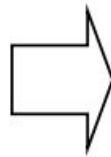
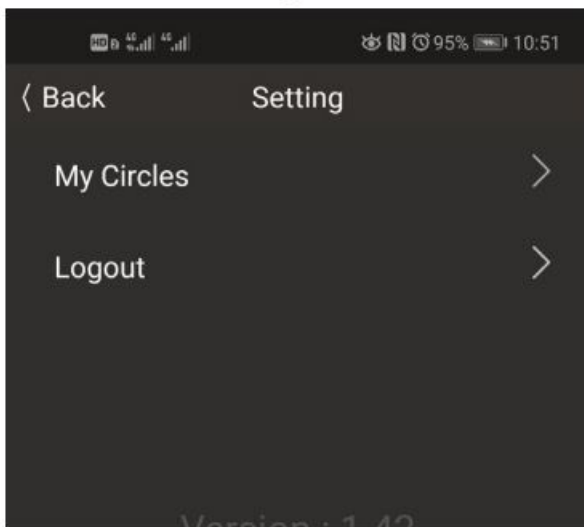
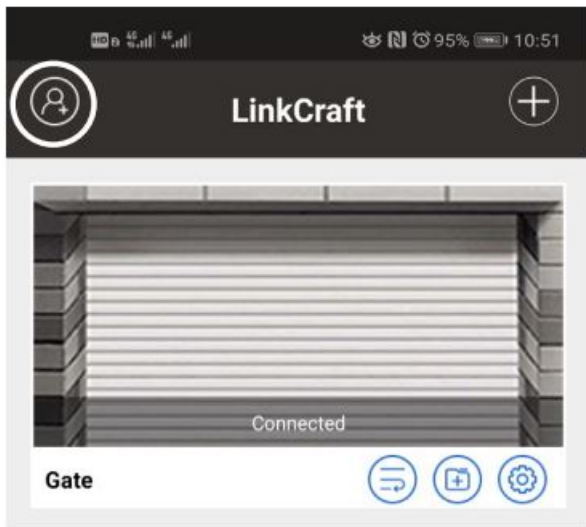


Click here to set the ON/OFF status of the relay output.

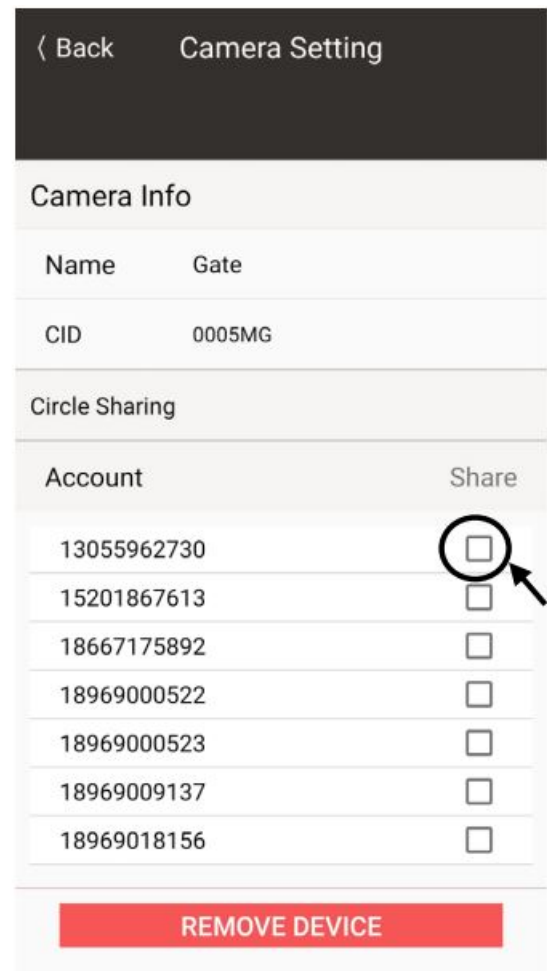


11. How to Share the Camera with Other Users

- 11.1 You can share the camera to any other person. The person which you intend to share the camera should install the APP and register a user account. Click on the top left corner of the APP's main interface to enter my circle settings and add a friend account.



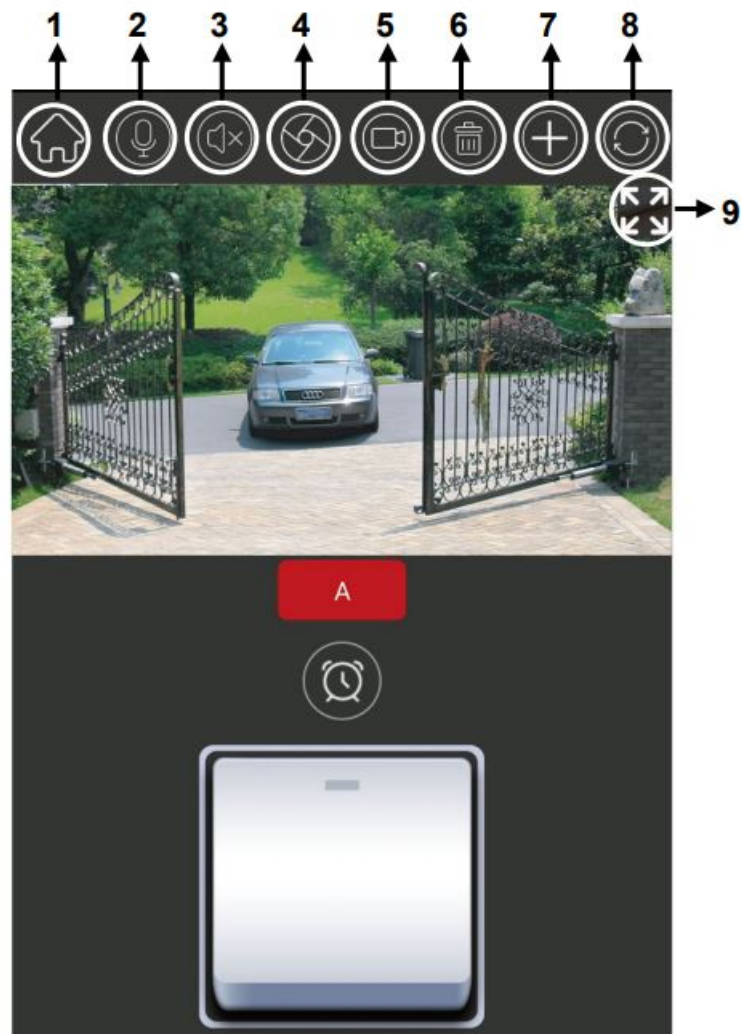
- 11.2 After the addition is completed, return to the main interface of the APP. Click the setting iron to get into the enable/disable sharing interface. You can tick the user account which you want to share. The account which has been shared should wait for about 1 minute before entering the APP to operate.



- 11.3 You can also remove the device or remove sharing in the above setting interface as needed.

12. Other functions

1. Touch to go back to the HOME.
2. No use for this model of camera.
3. No use for this model of camera.
4. Monitor screen capture which will be stored in your phone.
5. Shoot a short monitor video which will be stored in your phone.
6. No use for this model of camera.
7. No use for this model of camera.
8. Rotate the monitor screen 180o.
9. Maximize the monitor screen to full screen (The icon will display after touching the main monitor image area).
10. Video playback if there is a Mini SD card installed in the camera.
11. View the photo and video which you take with the NO. 4 and NO.5 function of the camera in your local device (mobile phone)




TOPENS Website

<http://www.topenstool.com/>

Any question, please do not hesitate to contact us: E-mail: support@topenstool.com
Kindly include your Product Model, Purchasing Date & Site, Order #,
and your contact information. All your concerns will be replied within
24 hours. Tel: +86 (571) 8908 0213 (China) Mon-Fri 9:00AM-5:30PM (UTC +08:00)

Documents / Resources

	<p>TOPENS TC186 WiFi Surveillance Built-in Relay Switch Camera [pdf] User Manual TC186, WiFi Surveillance Camera, Built-in Relay Switch, TC186 WiFi Surveillance Camera, TC 186 Built-in Relay Switch</p>
---	---

References

- [TOPENS Gate Opener Automatic Swing Gate Operator & Sliding Gate Motor](#)