



## TOPENS TC173 Wireless Push Button User Manual

[Home](#) » [Topens](#) » TOPENS TC173 Wireless Push Button User Manual 

### Contents

- [1 TOPENS TC173 Wireless Push Button](#)
- [2 Installation](#)
- [3 Program the push button to the control board](#)
- [4 Documents / Resources](#)
  - [4.1 References](#)
- [5 Related Posts](#)



### TOPENS TC173 Wireless Push Button

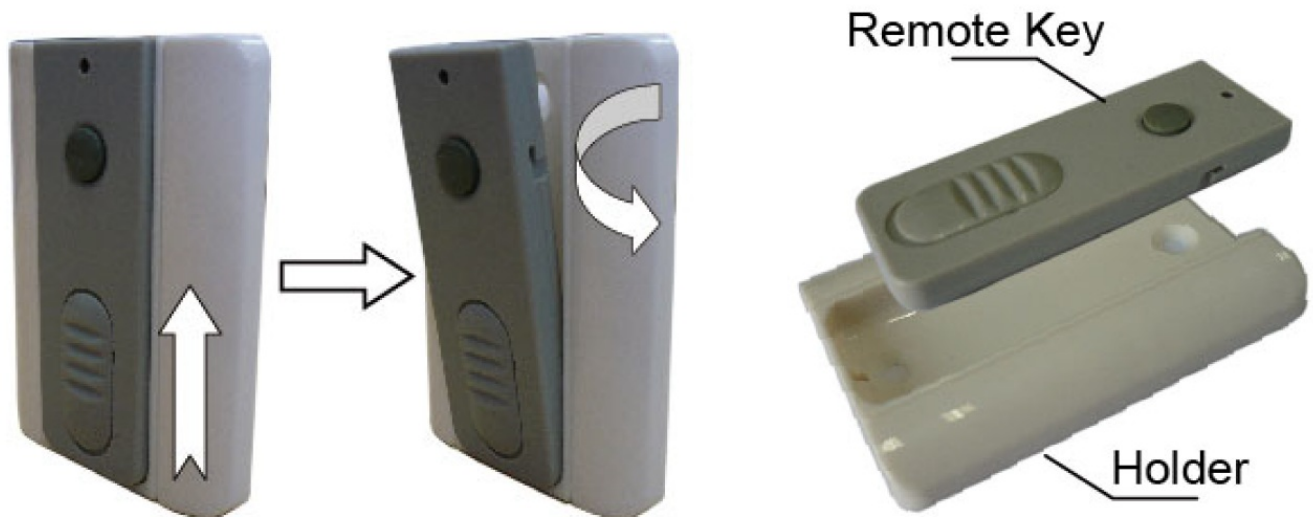


Thank you for purchasing the wireless push button remote control (TC173). It can be mounted not only on wall in

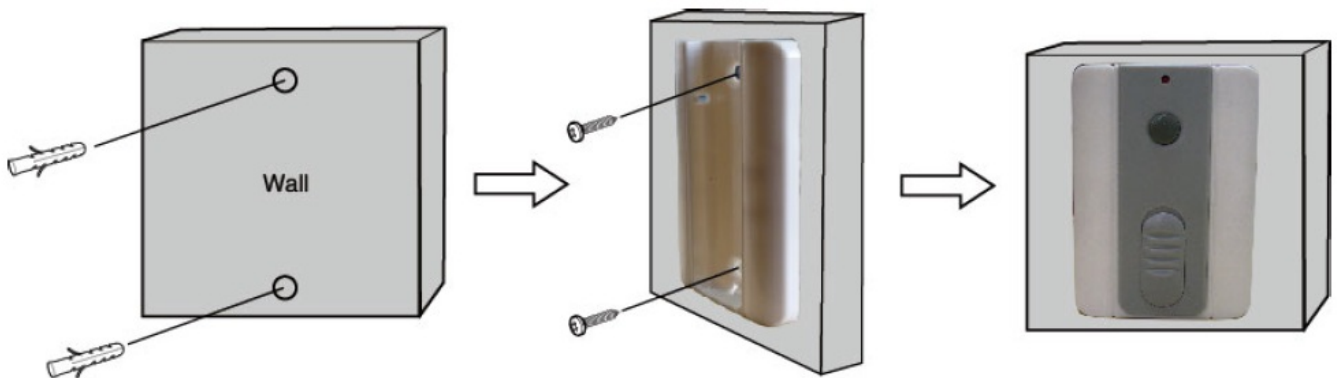
the room but also in the car or any other place for user convenience. Read the manual carefully and completely before you permanently mounting the push button.

## Installation

There are 2 parts of the push button, one is remote key and another is the holder. You should take the remote key out before the installation. You can detach the holder from the push button according to Fig.1.

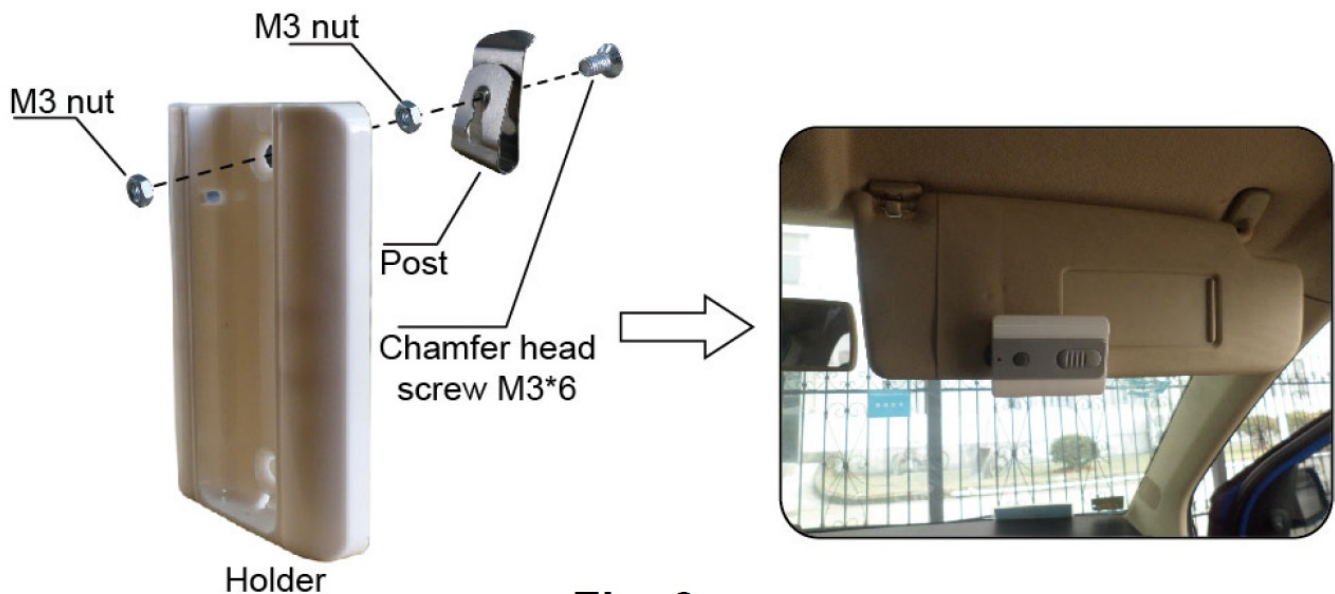


There are 2 methods to install the push button according to you needs. One is permanently mounting to the wall (Fig.2) and another is installing to the post for portable using (Fig.3).



## Program the push button to the control board

Press and release the button for learning the remote control on the control board, the LED will be on or displaying for programming. And then press the remote key of the push button twice in 2 seconds, the LED will flash for 4 seconds then back to standby mode. Now the push button has been programmed successfully.



[www.topens.com](http://www.topens.com)

Any question, please do not hesitate to contact us:

E-mail: [support@topens.com](mailto:support@topens.com)

Kindly include your Product Model, Purchasing Date & Site, Order #, and your contact information. All your concerns will be replied within 24 hours. Tel: +1 (888) 750 9899 (Toll Free USA & Canada)

## Documents / Resources

	<p><b><a href="#">TOPENS TC173 Wireless Push Button</a></b> [pdf] User Manual          TC173 Wireless Push Button, TC173, Wireless Push Button, Push Button, Button</p>
--	---

## References

- [TOPENS Gate Opener Automatic Swing Gate Operator & Sliding Gate Motor](#)