



TOPDON Volcano2000 Portable Lithium-ion Jump Starter User Guide

[Home](#) » [TOPDON](#) » TOPDON Volcano2000 Portable Lithium-ion Jump Starter User Guide

*TOPDON Volcano2000 Portable Lithium-ion
Jump Starter User Guide*

TOPDON



Volcano2000

Portable Lithium-ion Jump Starter for 12V Cars & Trucks
USER MANUAL

Contents [[hide](#)

- [1 Welcome](#)
- [2 About](#)
- [3 Features](#)
- [4 Package Contents](#)
- [5 Compatibility](#)
- [6 Specifications](#)
- [7 How To Use](#)
- [8 Attention:](#)
- [9 Battery Charging](#)
- [10 Troubleshooting Guide](#)
- [11 Warranty](#)
- [12 Documents / Resources](#)
- [13 Related Posts](#)

Welcome

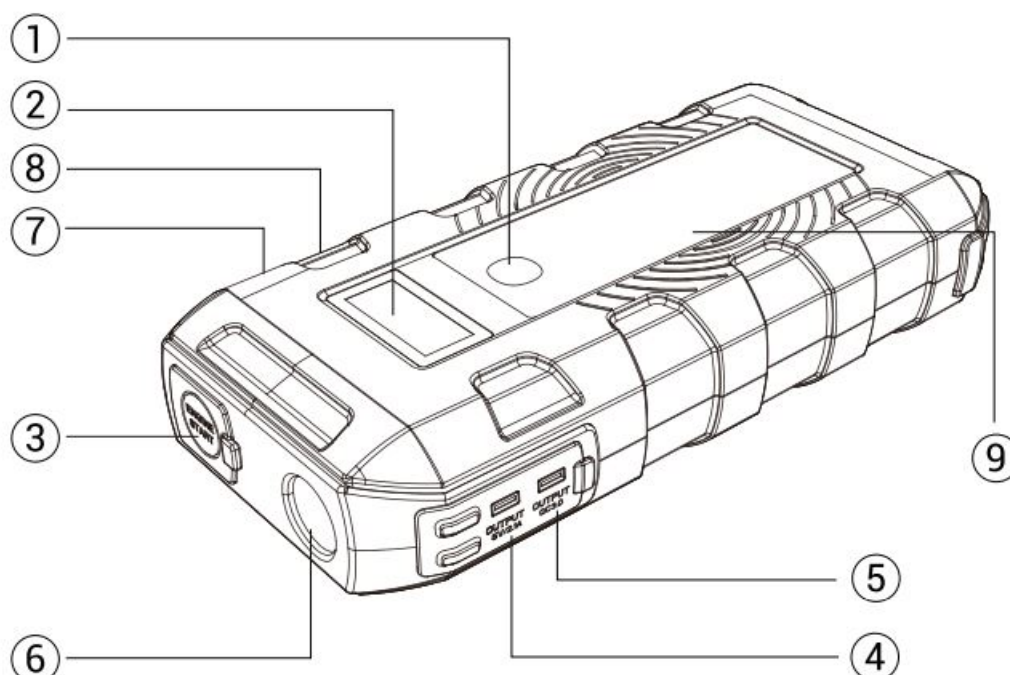
Thank you for purchasing TOPDON Jump Starter Volcano2000. Please patiently read and understand this User Manual before operating this product. If any issues arise from the operation of this product, welcome to contact support@topdon.com for official technical support.

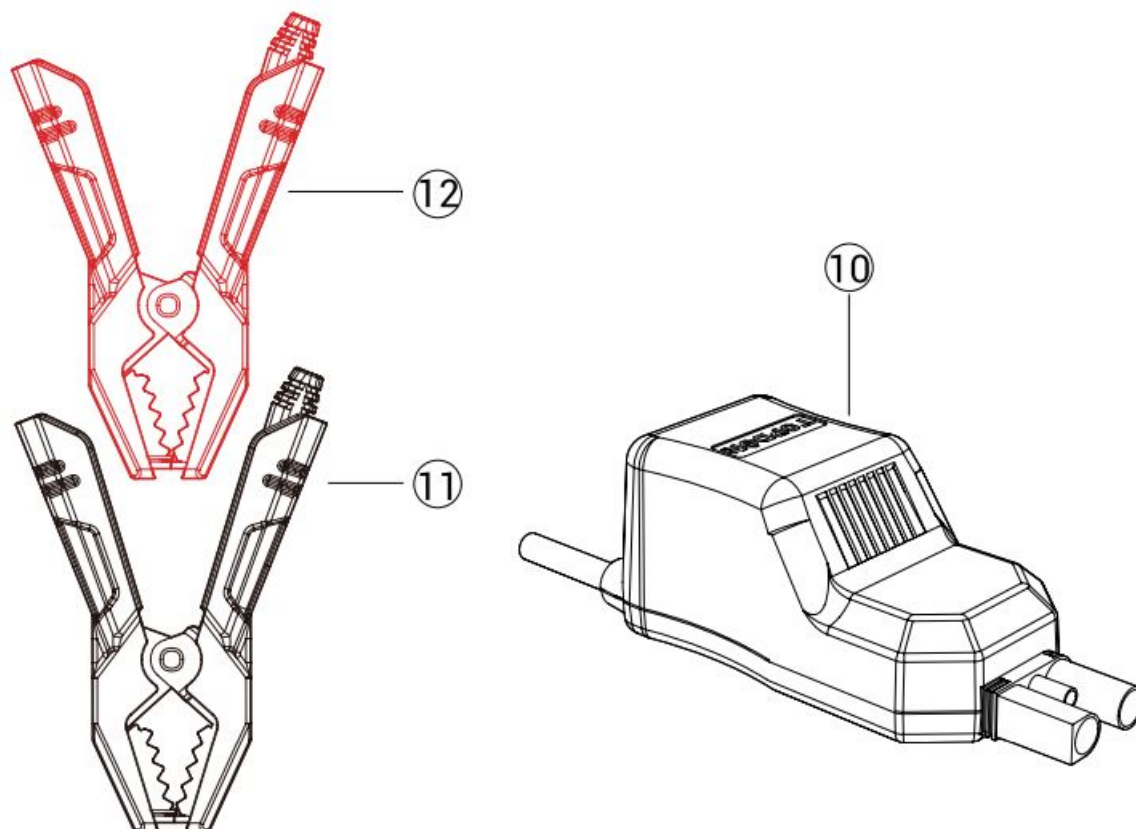
About

TOPDON Volcano2000 serves as a portable Jump Starter for cars, boats, motorcycles, ATVs, lawn mowers, caravans, tractors, trucks, etc., with 25-times boost capability on a single charge, and multiple protections against short circuits, overloads, and overcharging etc., for optimal user experience.

The Jump Starter can also be used in a variety of real-life applications for night illumination, outdoor activities, motoring life, and natural disaster emergency etc. with the added features as wireless charging, Type-C outputs, to be the intimate guardian in your journey.

Features





NO.	Function	Operation
1	Power Button	Press to charge the external electronic devices as cellphones etc.; Press to check its remaining battery capacity; Hold to turn on/off the flashlight.
2	LCD Display	Display the remaining power and output status.
3	Auto Jump Starting Port	12V, 2000A.
4	Output 5V/2.1A	Charge mobile devices and cameras etc, 50% faster than a standard charger.
5	Output QC3.0	Charge mobile devices and cameras etc, 75% faster than a standard charger.
6	Flashlight	Serve as Steady Light, or SOS, or Strobe.
7	Type-C Input & Output	Output port to charge mobile devices, laptops and cameras. Input port to charge this product.
8	DC Output	Power DC-powered devices as air-compressor, GPS, Vehicle Fridge, Vehicle Vacuum Cleaner, and Vehicle Air Purifier, etc.
9	Wireless Charging	Charge the Qi-certified cellphones.
10	Smart Clamp Plug	Insert the plug fully into the jump starter.
11	Black Smart Clamp	Connect to the negative terminal of the car battery.
12	Red Smart Clamp	Connect to the positive terminal of the car battery.

Package Contents

1. Lithium Jump Starter
2. Smart Battery Clamp
3. Type-C Cable
4. DC to Cigarette Lighter Converter
5. User Manual
6. Carrying Bag

Compatibility

The product is only compatible with the 12-volt lead-acid batteries, including 12v cars, trucks, pickups, motorcycles, boats, mowers, ATVs, tractors, caravans, etc. Do not use this product with any other type of batteries.

Specifications

Peak Current: 2000A

Type-C: in/out 5V/3A

Output 1: QC3.0 5V /3A, 9V /2A

Output 2: USB2.0 5V /2.1 A

DC Output: 12V/1 0A

Wireless charge:1 0W

Short Circuit Protection: Effective

Reverse Protection: Effective

The Operation Temperature: -20°C~ 70°C (-4 °F ~ 158 °F)

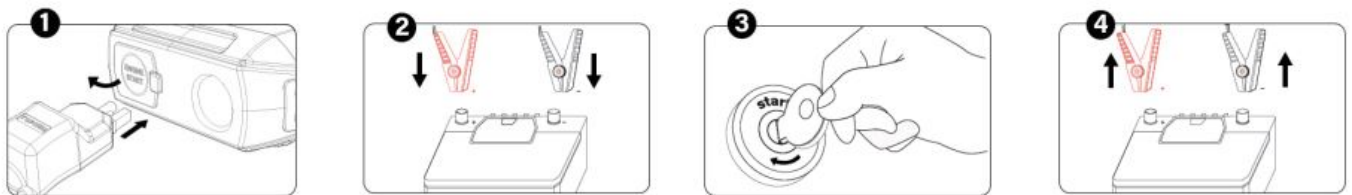
Over Discharge Protection: $\pm 3V \pm 0.5V$

Dimensions: 206*95.5*42 mm (8.11 *3.76*1.65 inches)

Weight 1.35kg (2.98lb)

How To Use

Jump Start Your Vehicle Battery.



1. Connect the smart battery clamp cable to the jump starter, the LED Indicator will flash alternately green and red indicating it is ready to use;
2. Connect the red clamp to the positive terminal (POS, P. +) of the battery; and connect the black clamp to the negative terminal (NEG, N.-) of the battery;
3. Start the vehicle;
4. When your vehicle is started, disconnect the clamps from the vehicle battery.

Attention:

LED Indicator	Tool Status
Red and green light flash	Ready to use
Green light on	Working status
Red light on	<ol style="list-style-type: none"> 1. Reverse Polarity Alert: battery clamps are connected to incorrect battery terminals. --double check; 2. Short Circuit Alert: battery clamps are connected to each other. --check whether two clamps are connected together; 3. Low Power Alert: device needs to be charged. --Charge the device in time; 4. Temperature Alert: battery temperature exceeds 149°F/65°C (+/-5°C). --Wait until the temperature is normal.
Red light flashes	Overload Alert: the current is reversing into the jump starter.

Charging the external electronic devices:

1. Press the “Power” button;
2. Use the USB cable to charge mobile devices as cell phones, tablets etc.; Use the 12V DC output to power appliances as air-compressors, vehicle refrigerators;

Use the LED Light as Flashlight or SOS, strobe:

1. Hold the “Power” button for 3 second to turn on LED Light;
2. Press the “Power” button to cycle the LED modes, from Steady Light, to “SOS”, and to Strobe.

Battery Charging

- Charge this product via the USB type-C input from the wall socket or other 5V-8V output devices.
- When this product is being charged, its LCD will display “Charging” message. When it’s fully charged, the LCD will display a “100%” message.
- Please charge this product for at least 8 hours before the first use.

5V USB Charger Rating			
	1A	2A	3A
Time	12hr	6hr	4hr



Important

- The battery jump procedure is only for use on vehicles with 12 volt batteries.
- Use only the smart battery clamps supplied with this product.
- Only jump start the vehicle when capacity is at least 50%.
- Better not get the two battery clamps contacted together.
- If the engine does not start, disconnect this product from the vehicle battery, and wait for at least 20 seconds before reconnecting. Maximum three attempts are allowed in 2 minutes.
- Once the vehicle engine is successfully started, disconnect the clamps within 30 seconds.
- DO NOT use this product if any cable, clamp or cord is damaged.
- DO NOT put the product under the direct sunlight or hot areas.
- DO NOT disassemble the equipment.
- DO NOT use chemicals or detergents to clean the product.
- DO NOT place the products in high temperature environment for a long time.
- Check the charge level of the device every four months, and charge the device if needed.

Troubleshooting Guide

Q: How to turn off this product?

A: This product will automatically power off while not being used.

Q: How long time does it need to get fully charged?

A: Via the Type-C USB input, the device will need approximately four to five hours to get fully charged.

Q: How many times can this product jump start a vehicle battery on a single charge?

A: About 25 times.

Warranty

- TOPDON One Years Limited Warranty The TOPDON Company warrants to its original purchaser that TOPDON products will be free from defects in material and workmanship for 12 months from the date of purchase (Warranty Period). For the defects reported during the Warranty Period, TOPDON will, according to its technical support analysis and confirmation, either repair or replace the defective part or product.
- This limited warranty is void under the following conditions:
Misused, disassembled, altered or repaired by a non-TOPDON technical repair specialist. Careless handling and violation of operation.

If you have any questions or doubts, please contact us via

Hotline 833-629-4832

Email support@topdon.com

Website www.topdon.com

Facebook [@TopdonOfficial](https://www.facebook.com/TopdonOfficial)

Twitter [@TopdonOfficial](https://twitter.com/TopdonOfficial)

MADE IN CHINA



Documents / Resources



[TOPDON Volcano2000 Portable Lithium-ion Jump Starter](#) [pdf] User Guide
TOPDON, Volcano2000, Portable, Lithium-ion, Jump Starter, for, 12V, Car, Trucks