



TOPDON RLink J2534 Programmer OEM Diagnostics User Guide

[Home](#) » [TOPDON](#) » TOPDON RLink J2534 Programmer OEM Diagnostics User Guide 

Contents

- [1 TOPDON RLink J2534 Programmer OEM Diagnostics](#)
- [2 Product Usage Instructions](#)
- [3 INTRODUCTION](#)
- [4 Product Overview](#)
- [5 LED Indicators](#)
- [6 Activate Device & Download Software](#)
- [7 Connect Device & Start Diagnosing](#)
- [8 FCC Statement](#)
- [9 Customer Service](#)
- [10 FAQ](#)
- [11 Documents / Resources](#)
 - [11.1 References](#)

TOPDON®

TOPDON RLink J2534 Programmer OEM Diagnostics



Specifications

- OBD-II Diagnostic Port
- Communication Indicator
- Power Indicator
- Connection Indicator
- RLink J2534 All-in-one Pass-thru Device
- LED Indicators
- USB Type-C Port

Product Overview

The TOPDON RLink J2534 is a versatile diagnostic tool designed for communicating with vehicles through the OBD-II port. It features LED indicators for easy status monitoring and a USB Type-C port for seamless connectivity.

Product Usage Instructions

Activate Device & Download Software

1. Download and install the RLink Platform software from www.topdon.com.
2. Launch the software, register/log in to your TOPDON account, and connect the RLink J2534 to your PC using the provided USB cable.
3. Bind and activate the device in the software.

4. Upgrade the firmware to the latest version.
5. Download specific drivers for OEM diagnostic software via Driver Management.
6. To ensure communication is normal, open the OEM diagnostic software, select RLink as the diagnostic interface, and turn the vehicle's ignition to the ON position to start diagnosing.

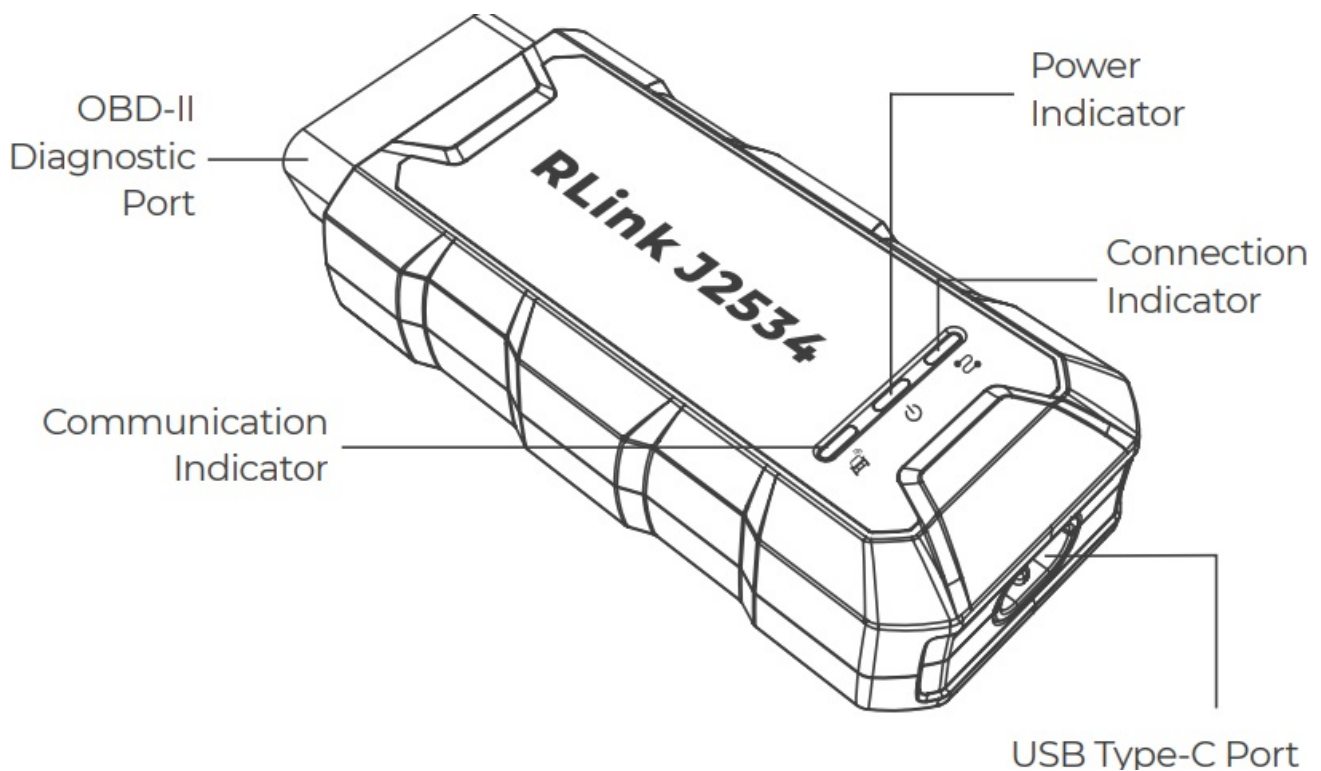
Connect Device & Start Diagnosing

Connect the RLink J2534 to the vehicle's DLC located under the dashboard with the vehicle's ignition OFF.

INTRODUCTION

- Thank you for purchasing the TOPDON RLink J2534. This quick user guide will walk you through the basic setup and operation of the RLink J2534.
- Please carefully read all the instructions before use. For further information, please download the detailed user manual via www.topdon.com/products/RLink-J2534.

Product Overview



LED Indicators

- **Connection Indicator:** Solid Blue: PC connected
- **Power Indicator:** Solid Red: power on
- **Communication Indicator:** Flashing Green: communicating with the vehicle

Activate Device & Download Software

1. Download and install the RLink Platform software on your PC.
 - Go to www.topdon.com. Click Diagnostic Tools > RLink J2534.

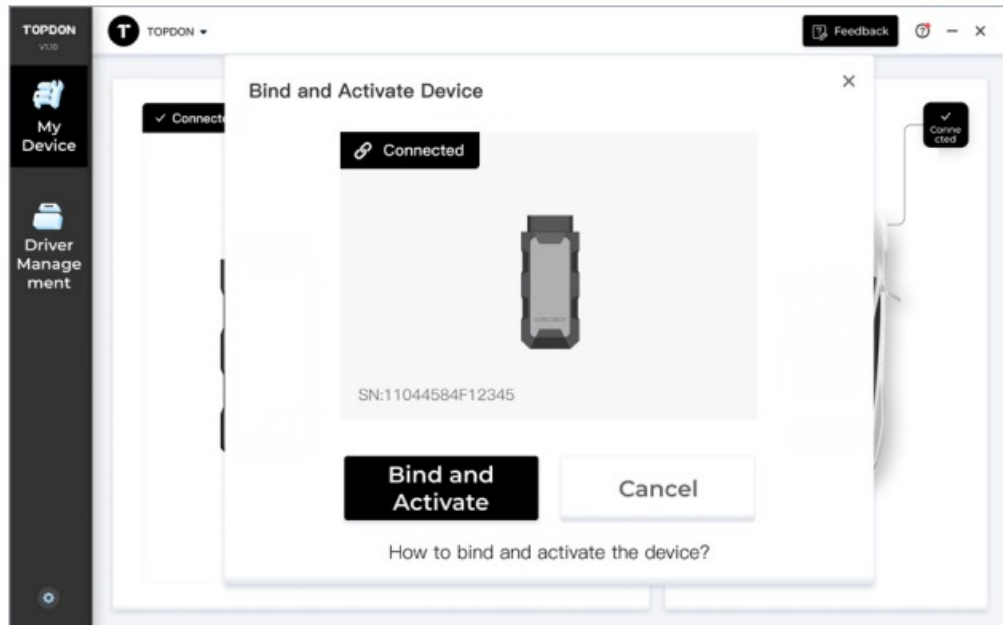
- Then click Download and click



- **Note:** It is recommended to disable antivirus software during installation. Because RLink Platform is the driver management platform for OEM software. It may be mistakenly removed by antivirus software.

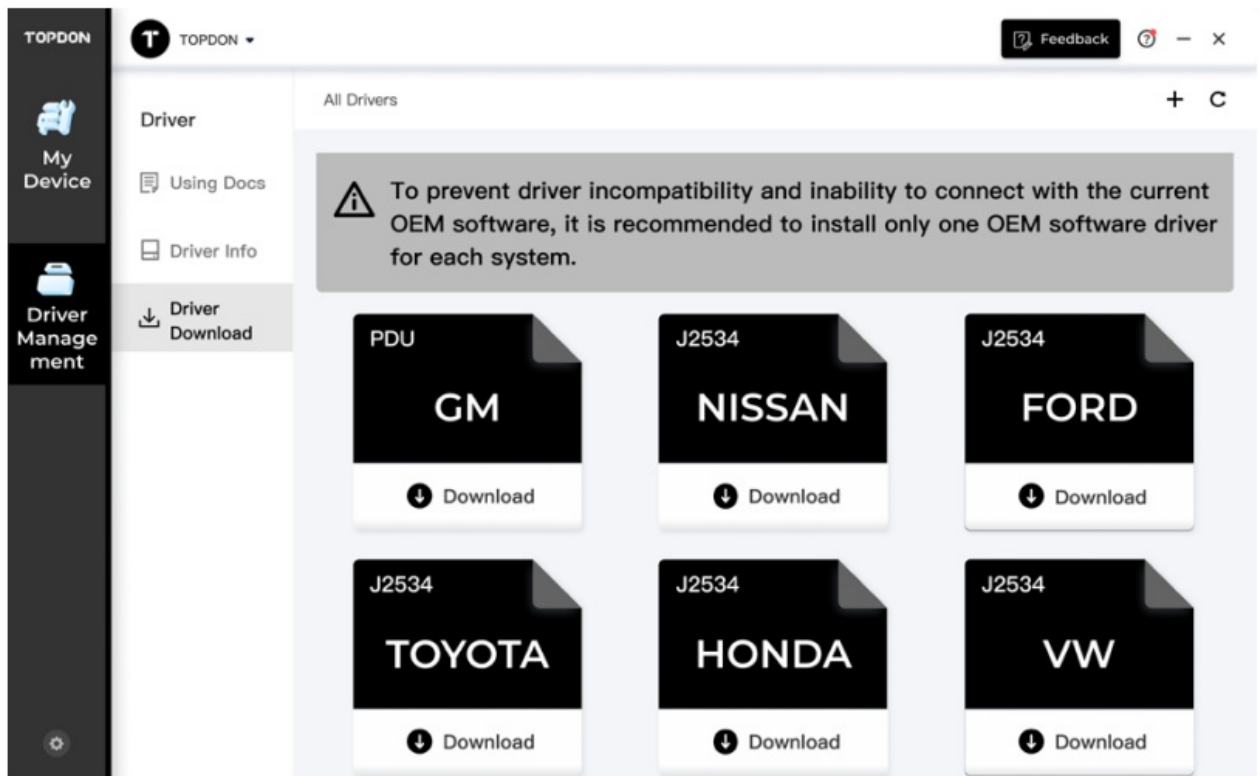
2. Launch the RLink Platform software. Register or log in to your TOPDON account. Connect the RLink J2534 to a PC using the supplied USB 2.0 cable. Then, click Bind and Activate to activate the RLink J2534.

- **Note:** Upgrade the firmware to the latest version after binding the device.



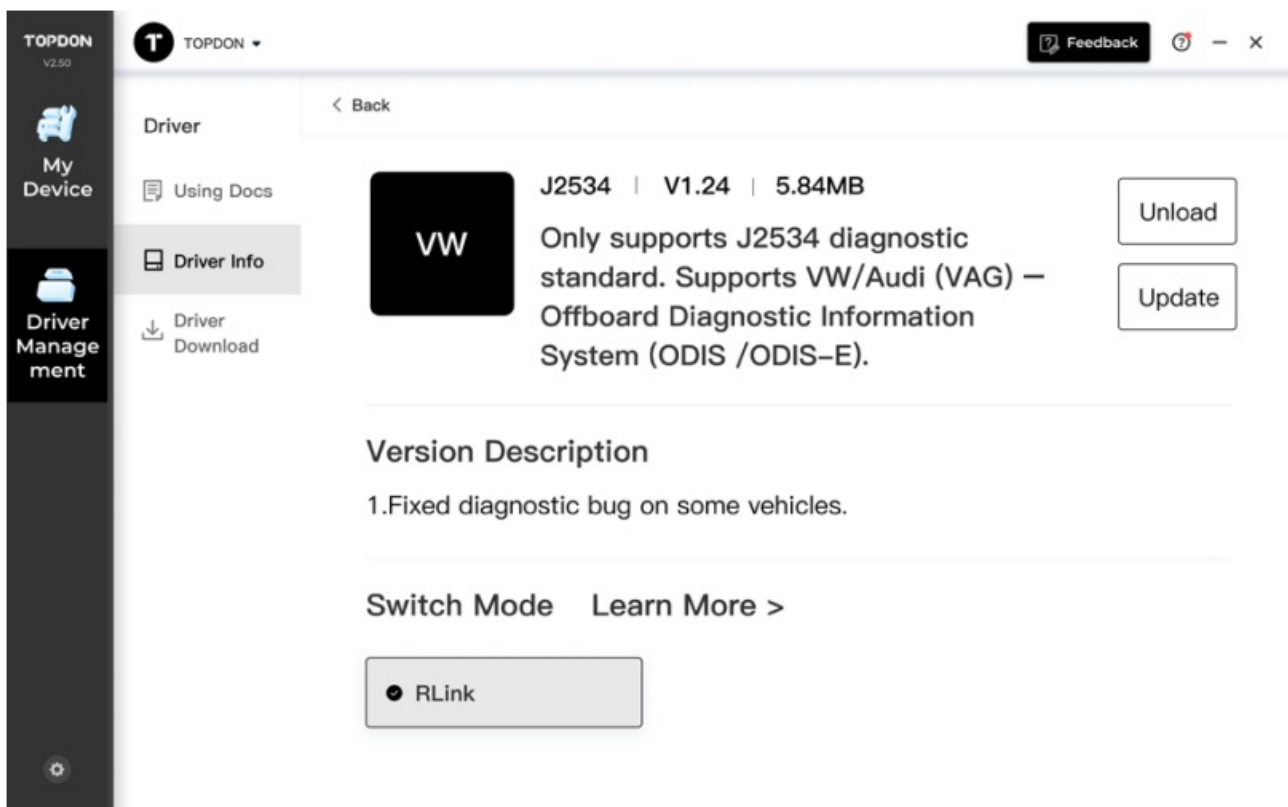
3. Click Driver Management > Driver Download to download the specific driver for the OEM diagnostic software.

- **Note:** The driver list is subject to the actual configuration of the product.



- **Note:** For the stability of the program, download the corresponding driver according to the OEM software of your PC. Do not download drivers that are not related to the OEM software.

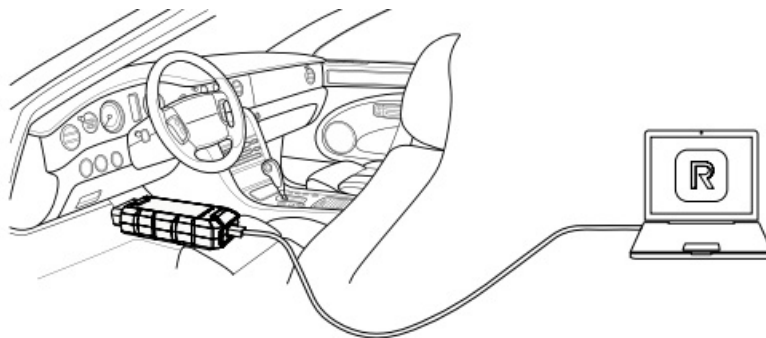
4. Click Driver Management > Driver Info after the driver is downloaded. Then click to open the driver you just downloaded and choose RLink mode.



- **Note:** The illustrations and screenshots used in this Quick User Guide may differ slightly from the actual product due to ongoing product improvements.

Connect Device & Start Diagnosing

1. Connect the RLink J2534 to the vehicle's Data Link Connector (DLC). The vehicle's DLC is usually located under the dashboard.
 - **Note:** Ensure the ignition is OFF before plugging in the unit.



2. Ensure that the communication is normal after the connection is completed. Then, open the OEM diagnostic software and select RLink as the diagnostic interface.
 - **Note:** The OEM diagnostic software can be obtained from the official website of the corresponding manufacturer or other channels.
3. Turn the ignition to the "ON" position. You are now ready to start diagnosing the vehicle.

FCC Statement

Any changes or modifications not expressly approved by the party responsible for compliance could void the user's authority to operate the equipment. This device complies with Part 15 of the FCC Rules. Operation is subject to the following two conditions:

1. this device may not cause harmful interference,

2. This device must accept any interference received, including interference that may cause undesired operation.

Note: This equipment has been tested and found to comply with the limits for a Class B digital device, under Part 15 of the FCC Rules. These limits are designed to provide reasonable protection against harmful interference in a residential installation. This equipment generates, uses, and can radiate radio frequency energy, and if not installed and used according to the instructions, it may cause harmful interference to radio communications. However, there is no guarantee that interference will not occur in a particular installation. If this equipment does cause harmful interference to radio or television reception, which can be determined by turning the equipment off and on, the user is encouraged to try to correct the interference by one or more of the following measures:


- Reorient or relocate the receiving antenna.
- Increase the separation between the equipment and receiver.
- Connect the equipment into an outlet on a circuit different from that to which the receiver is connected.
- Consult the dealer or an experienced radio/TV technician for help.

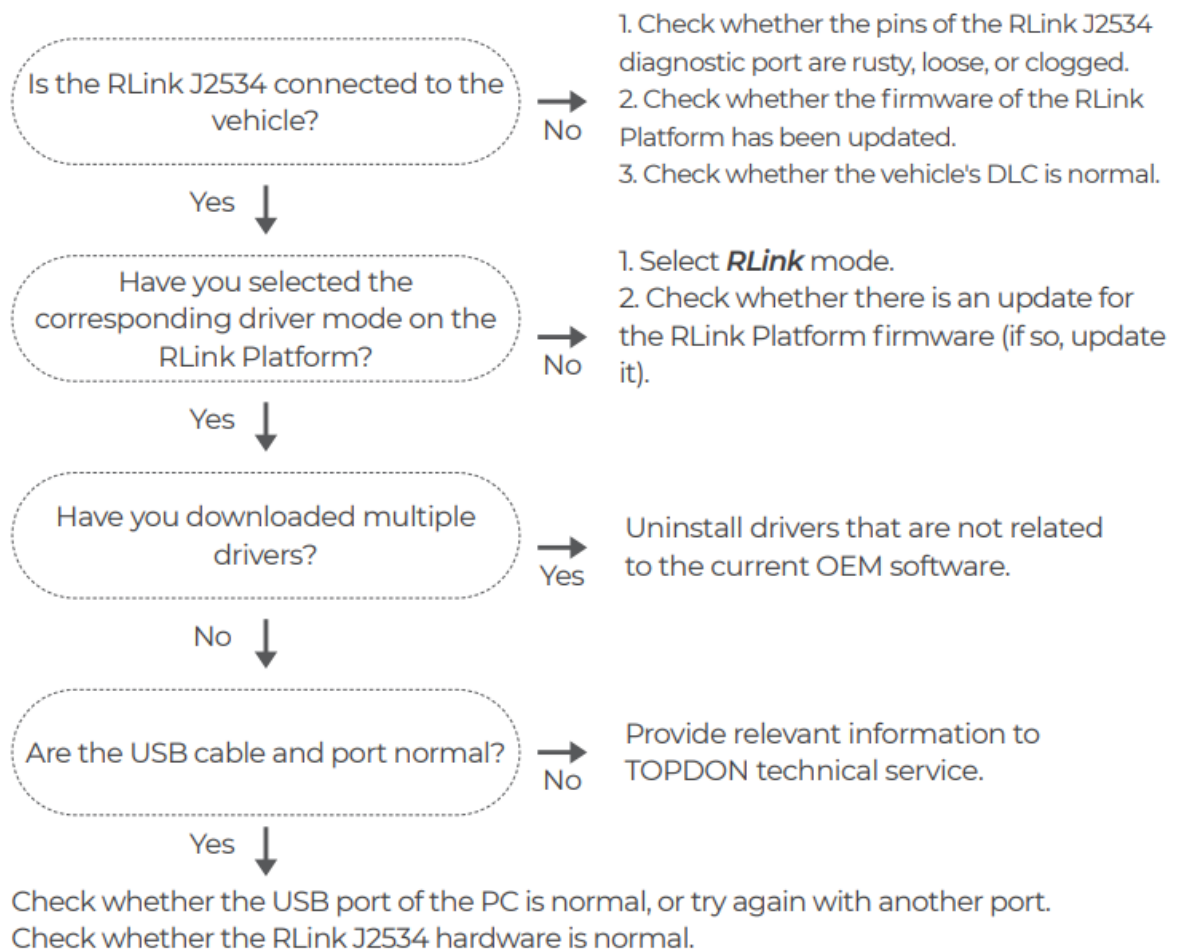
Customer Service

- TEL: +86-755-21612590 +1-[833-629-4832](tel:8336294832) (North America) +34 930 038 094 (Europe)
- EMAIL: SUPPORT@TOPDON.COM
- WEBSITE: WWW.TOPDON.COM
- FACEBOOK: @TOPDONOFFICIAL
- x: @TOPDONOFFICIAL



FAQ

- **Q: How do I download the driver management software of the RLink J2534?**
 - **A:** Go to www.topdon.com, click RLink J2534, and then download and install the RLink Platform. Disable antivirus software during installation to prevent removal by mistake.
- **What systems support installing the RLink Platform?**
 - Windows 7, 8, 10 or higher (64-bit). 32-bit is not supported.
 - How do I download the driver management software of the RLink J2534? Go to www.topdon.com. Click RLink J2534. Then click Download and click to  download the RLink Platform and install it on your PC.
 - **Note:** It is recommended to disable antivirus software during installation. Because RLink Platform is the driver management platform for OEM software. It may be mistakenly removed by antivirus software.
- **Why does it prompt that the email address is already registered?**
 - Please check if this account is already registered on another TOPDON device.
 - If you have already registered, just log in to the account and bind RLink J2534.
- **Why does it prompt that the device is bound to another account?**
 - Please choose the correct account to log in or contact TOPDON technical service to unbind.
 - **(Note:** One device can only be bound to one account.)
- **Why does it prompt that the vehicle is not connected?**



- **Note:** The details and functions of the product may differ from the actual product due to ongoing product improvements.
- The actual product shall prevail. Contact support@topdon.com for any problems. TOPDON technical support will reply within 24 hours.

Documents / Resources

	<p>TOPDON RLink J2534 Programmer OEM Diagnostics [pdf] User Guide RLink J2534 Programmer OEM Diagnostics, RLink J2534, Programmer OEM Diagnostics, OEM Diagnostics</p>
--	---

References

- [TOPDON Global | Pro Diagnostics, Battery Service, Thermal Imaging – HK Topdon Technology Co., LIMITED](#)
- [User Manual](#)

[Manuals+](#), [Privacy Policy](#)

This website is an independent publication and is neither affiliated with nor endorsed by any of the trademark owners. The "Bluetooth®" word mark and logos are registered trademarks owned by Bluetooth SIG, Inc. The "Wi-Fi®" word mark and logos are registered trademarks owned by the Wi-Fi Alliance. Any use of these marks on this website does not imply any affiliation with or endorsement.