



TOPDON Phoenix Display Tablet Instruction Manual

[Home](#) » [TOPDON](#) » TOPDON Phoenix Display Tablet Instruction Manual 

TOPDON

Contents

- [1 TOPDON Phoenix Display Tablet](#)
- [2 Phoenix / Phoenix Lite](#)
- [3 VCI \(Vehicle Communication Interface\)](#)
- [4 Register & Update](#)
- [5 Preparation & Vehicle Connection](#)
- [6 Start Diagnostics](#)
- [7 Documents / Resources](#)
- [8 Related Posts](#)

TOPDON Phoenix Display Tablet



Phoenix / Phoenix Lite

There are two main components to the Phoenix / Phoenix Lite system:

1. Phoenix / Phoenix Lite Display Tablet

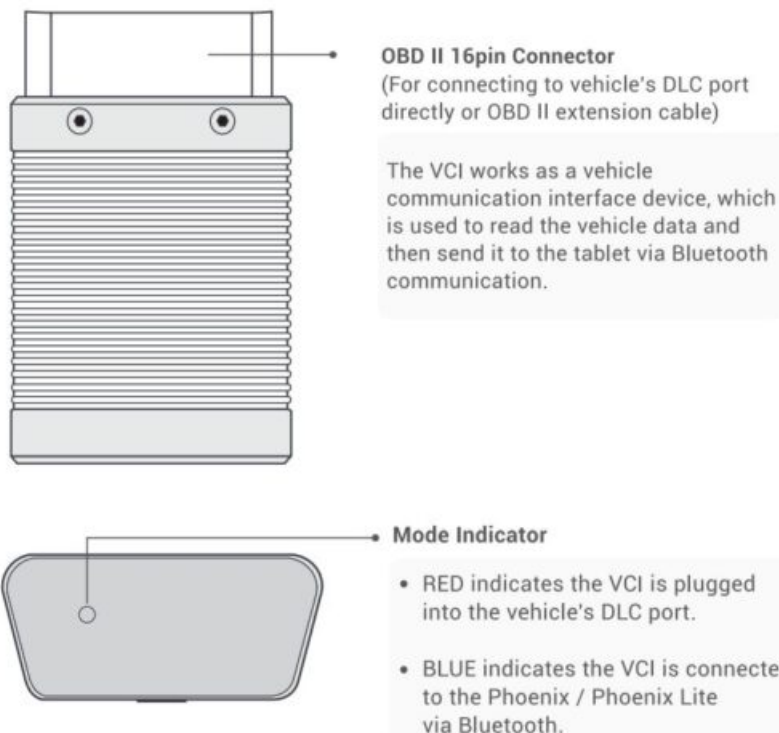
2. VCI (Vehicle Communication Interface)



IMPORTANT: Read the instruction carefully and use the unit properly before operating. Fail to do so may cause damage and/or personal injury, which will void the product warranty.

Note: This Quick Start Guide is subject to change without written notice.

VCI (Vehicle Communication Interface)

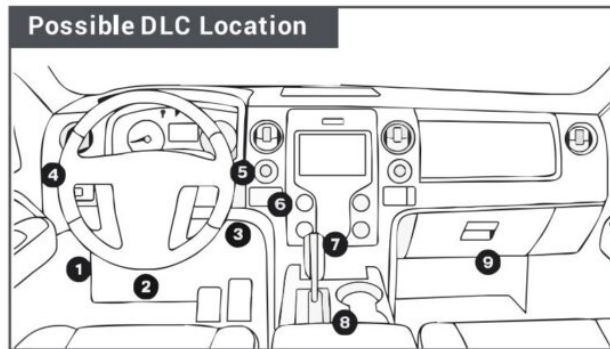


Install the VCI

1. Locate the vehicle's DLC port. See "Possible DLC Location".

2. Plug the VCI into the vehicle's DLC port.

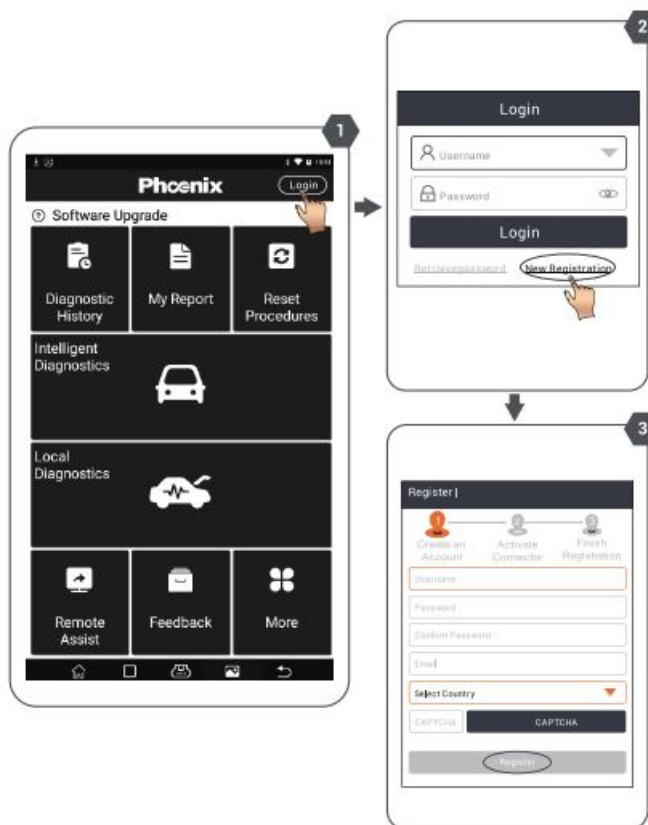
For non-16 pin DLC socket, refer to "Preparation & Vehicle Connection" for details.

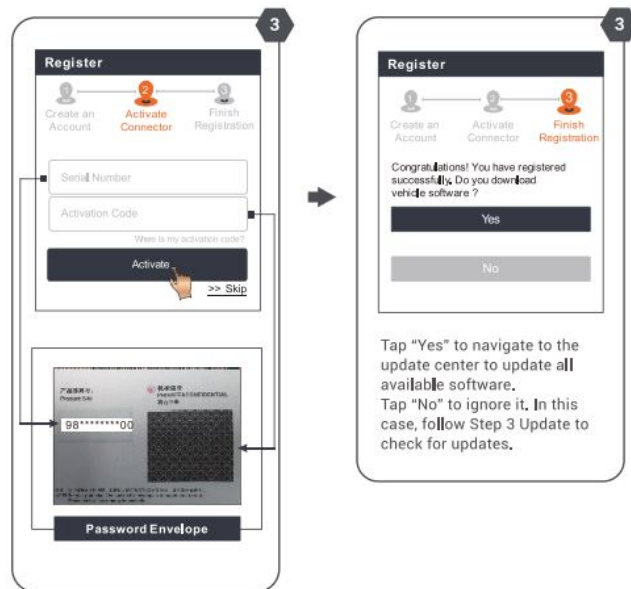


Remember to unplug the VCI from the vehicle while being idle, and exit all diagnostic processes before unplugging.

Register & Update

1. **Network Setting:** Tap Settings-> [Wi-Fi], select the desired Wi-Fi connection until "connected".
2. Launch the Phoenix / Phoenix Lite application, and register an account:





Update

All software is updated periodically. It is recommended to check regularly for updates and install the latest software version for the best service, functions and experience Tap Software Upgrade] on the main menu.

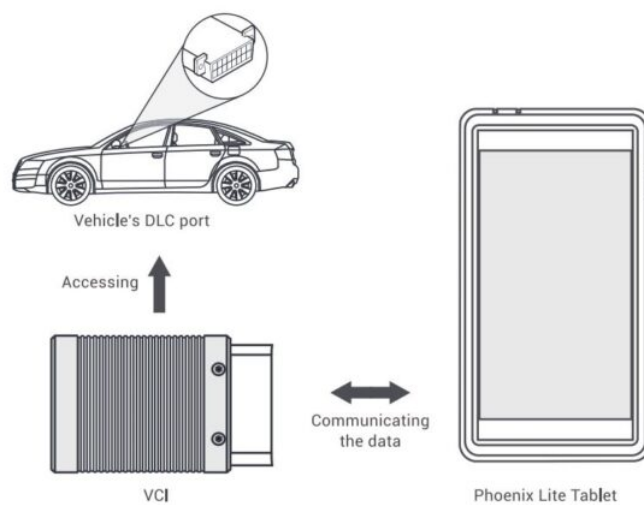
NOTE: Make sure the Wi-Fi connection is strong and stable while upgrading.

Preparation & Vehicle Connection

Preparation

1. The ignition is turned on.
2. The vehicle battery voltage is 9-18 volts.
3. The throttle is in the closed position.

Working Principle



Vehicle Connection

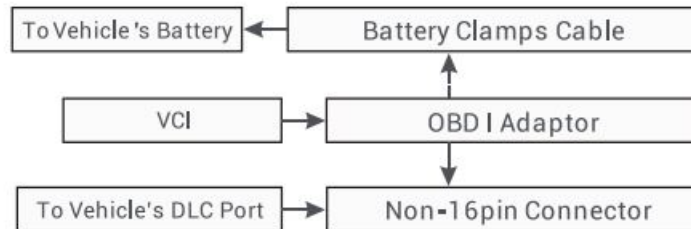
1. BD II Vehicle Connection

1. Plug the VCI into the Vehicle's DLC port directly, or use the OBDII extension cable to connect the VCI with the Vehicle's DLC port.

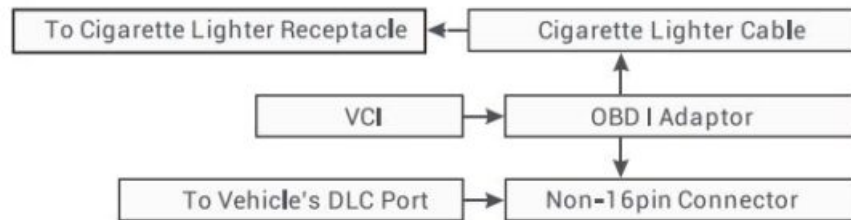
2. Non-OBD II Vehicle Connection

For non-OBD II vehicle, proceed as follows

1. Locate vehicle's DLC port (refer to Section "VCI").
2. Connect one end of the OBD II adaptor to the VCI, and the other end to the non-16 pin connector.
3. Plug the other end of the non-16 pin connector into the DLC port.
4. To supply power to the OBD I adaptor by one of the following ways:
 1. **Via battery clamps cable (optional):** Connect one end of the battery clamps cable to vehicle's battery, and the other end to the power jack of the OBD I adaptor.



2. **Via Cigarette lighter cable (optional):** Connect one end of the Cigarette lighter cable to vehicle's Cigarette lighter receptacle, and the other end to the power jack of the OBD I adaptor.



NOTE: Non-OBDII adapters are not included in Phoenix Lite package.

Start Diagnostics

Three diagnostic methods are available:

- **Intelligent Diagnostics:**

The system will automatically guide you directly to the fix and help you eliminate guesswork, without step-by-step manual menu selection.

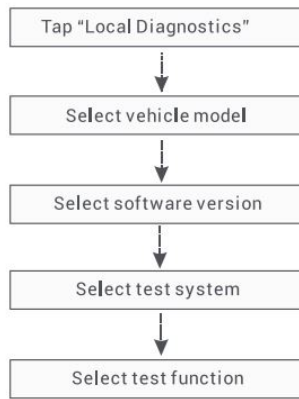
- **Local Diagnostics:**

You need to manually select the menu-driven command.

- **Remote Diagnostics:**

This helps repair shops or mechanics to diagnose a remote vehicle, and launch instant messages, allowing for improved efficiency and faster repairs.

For neW users, the Local Diagnostics is recommended as follows:



Documents / Resources



[TOPDON Phoenix Display Tablet](#) [pdf] Instruction Manual
Phoenix, Phoenix Lite, Phoenix Display Tablet, Display Tablet