



Topdon Technology BTMOBILE Lite Wireless Battery and System Tester User Manual

[Home](#) » [Topdon Technology](#) » Topdon Technology BTMOBILE Lite Wireless Battery and System Tester User Manual 

Contents

- [1 Topdon Technology BTMOBILE Lite Wireless Battery and System Tester](#)
- [2 WELCOME](#)
- [3 Package List](#)
- [4 Features](#)
- [5 APP Installation & Setup Installation:](#)
- [6 Operationn Introduction](#)
- [7 Cranking Test](#)
- [8 System Test \(Overall Test for Battery\)](#)
- [9 Technical Specification](#)
- [10 FCC STATEMENT](#)
- [11 FAQ](#)
- [12 Documents / Resources](#)
 - [12.1 References](#)
- [13 Related Posts](#)

TOPDON

Topdon Technology BTMOBILE Lite Wireless Battery and System Tester



WELCOME

Welcome

Thank you for purchasing the TOPDON BT MOBILE Lite wireless battery tester. Please read and understand this manual carefully before using this product. If any issues arise from the operation of this product, welcome to contact support@topdon.com for official technical support.

About

BT MOBILE Lite is a 6V/12V wireless battery and system tester, adopting the most advanced conductance detection technology and reverse polarity protection technology to provide key information about battery health for technicians, and professionals, so as to identify battery and charging problems quickly, easily and accurately.

Package List

Compatibility

Please be noted that battery type and CCA values (Cold Cranking Amp) marked on the battery label. Please refer to it before using BT MOBILE Lite.

1. Regular Flooded
2. AGM Flat plate
3. AGM Spiral
4. GEL
5. EFB

Note: If your vehicle battery is not the battery mentioned above and you are not sure about which type it is, please choose AGM to conduct test, and the error is within 10%.

Features



Indicator Display

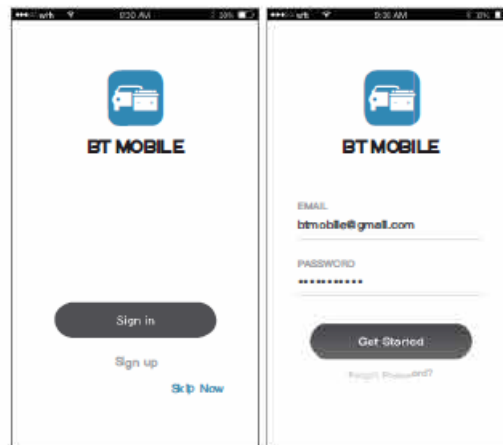
LED Indicator	Battery Status
Solid Green	Good Battery Connect
Solid Blue	Data Transferring

APP Installation & Setup Installation:

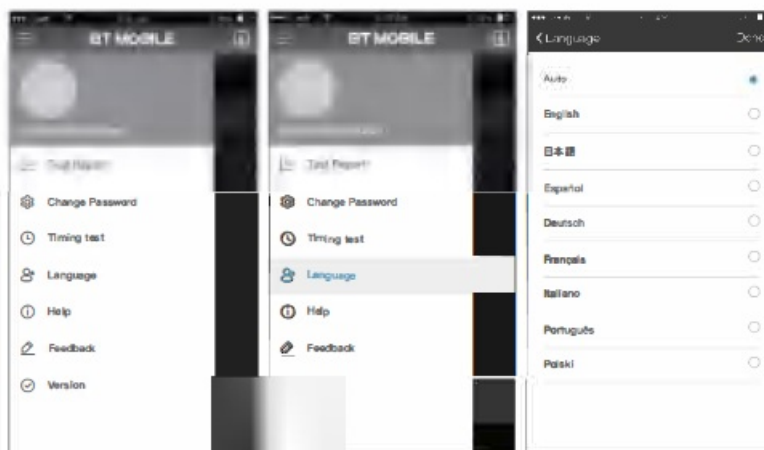
Download and install the App: “BT MOBILE” in Apple Store or Google Play. *Note: For Apple devices, update to iOS 8.0 or later; Android devices, OS 4.3 or later.

Setup:

For the first time, you can choose to register with email or skip login.



Drop-down Menu Function:



Operationn Introduction

Before Test:

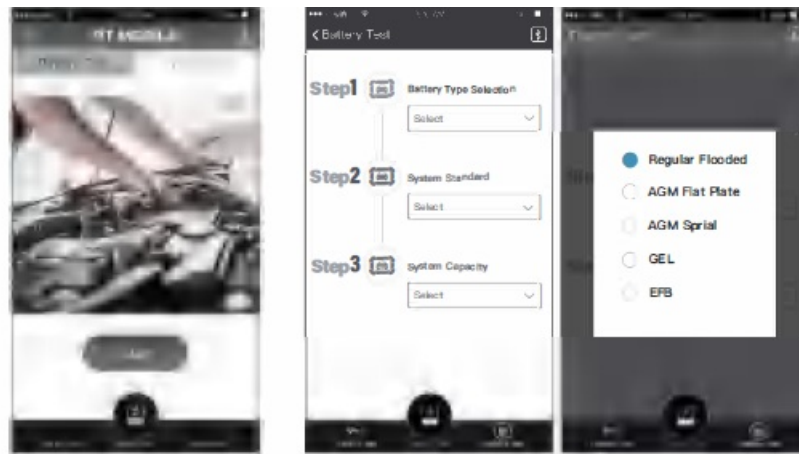
1. Before you test a battery in a vehicle, turn off the ignition, all accessories, loads. Close all of the vehicle's doors and trunk lid.
 2. Make sure the battery terminals are clean. Use a wire brush to clean hem, if necessary. t
 3. Connect the RED(+) Positive Battery Clamp to the(+) positive battery terminal, a co ec he BLACK(-) Ne a ve Ba ery Clamp o he(-) he correct terminals.
 4. Open the Bluetooth on the mobile phone.
 5. Test Introduction
- **BATTERY TEST:** Display SOH (State of Health}, SOC (State of Charge), Voltage, Current, Rating, and the readable analysis results on the App;
 - **CRANKING TEST:** Analyze the actual cranking voltage and the cranking me to help you quickly figure out the whole state of the starting syst g em, time to help quickly figure out the whole staate of the starting time.
 - **Note:** This tester works best if the battery connectors have been removed and the battery posts have been cleaned. Any corrosion between the tester clamps and the battery connectors, or between the battery connectors and the battery posts, will degrade the tester's efficiency.

Battery Test (for 12V battery)

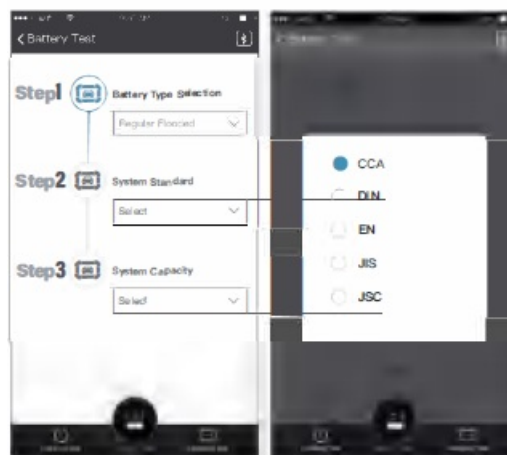
1. Open the APP on your mobile device and log in.
2. Click the flashing Bluetooth logo in the upper right corner of the home creen, to enter the connection interface, and search for the matching s device name.
3. If the Bluetooth connection is successful, the Bluetooth logo will stop flashing. t
4. Click the matching device name to connect.



- Click "Battery Test"on the home screen and click "Start"
- Select the battery type and click ok to confirm,

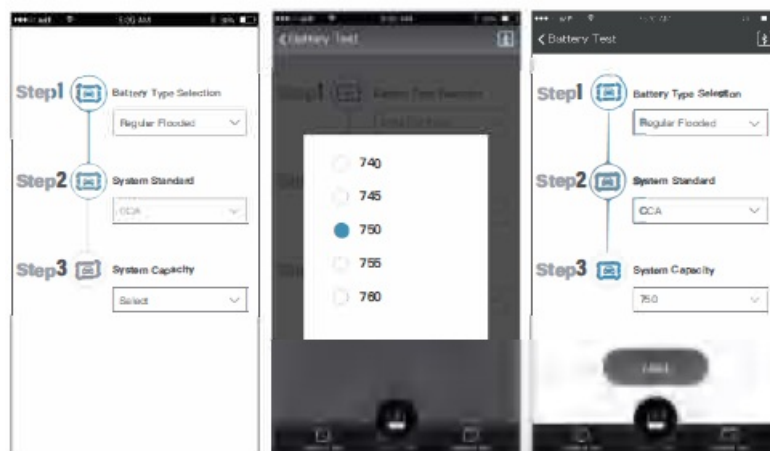


Select the battery standard marked on the battery label, and click “OK” to confirm.

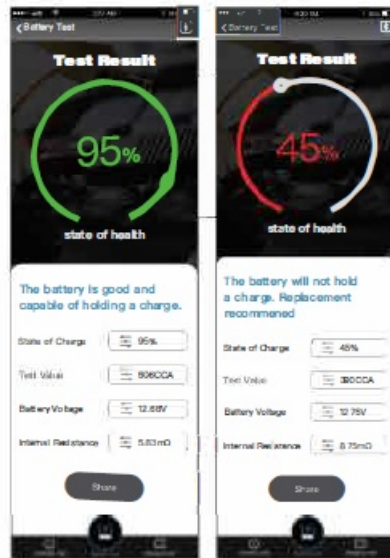


Note: If the battery is JIS standard, please refer to the table for value and select CCA (SAE) as the test standard (please Google JIS to CCA).

- Select battery capacity value marked on the battery label and click “OK” to confirm.



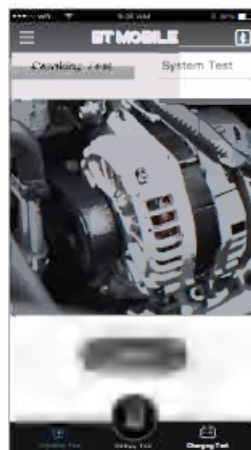
- Click “Next” and wait a few seconds for results.
- Drop down to share the results.



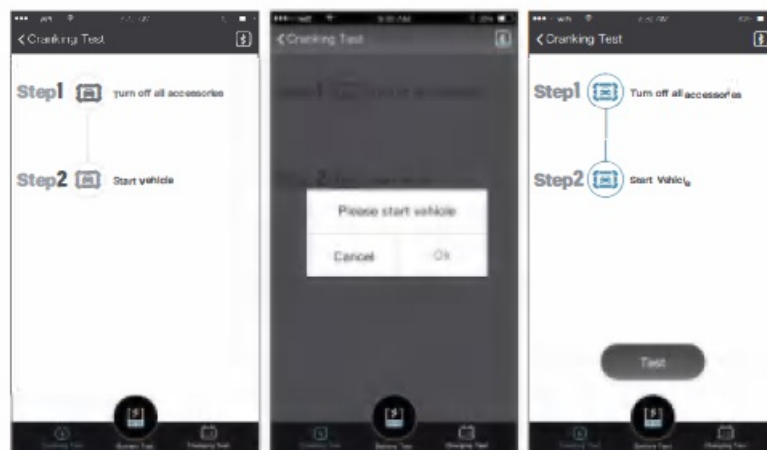
Cranking Test

The engine and all other accessory loads must be OFF during the test.

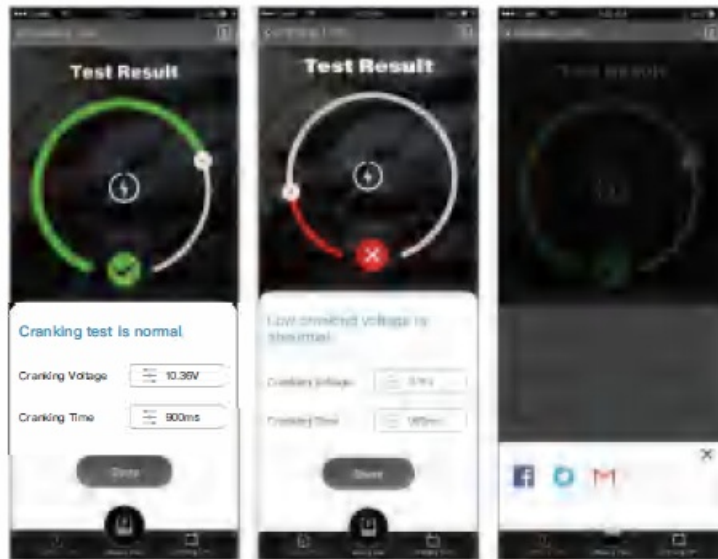
1. Click "Cranking Test" on the home screen, and then click "Start".



2. Follow the steps and start the vehicle.



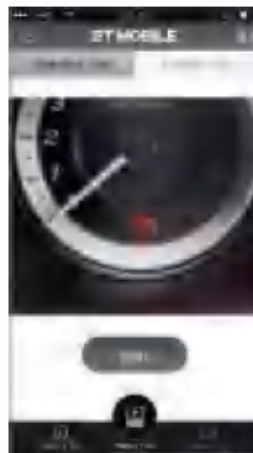
3. Click "Test" to get the results.
4. Drop down to share the results.



5. Charging Test

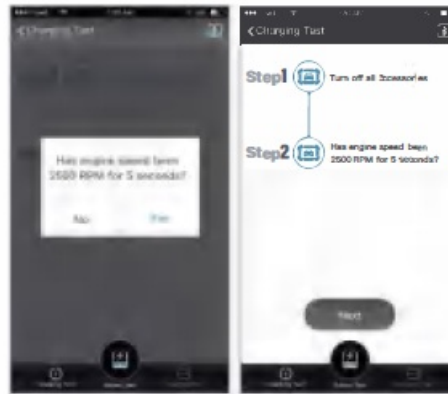
The engine must be ON during the test.

Click “Charging Test” on the home screen, then click “Start”.



6. Follow the steps and start the vehicle.



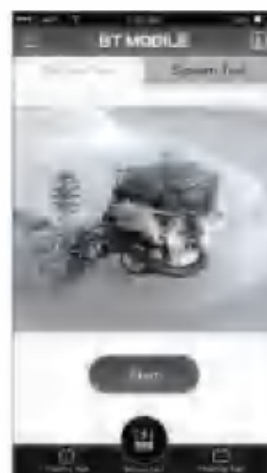


7. Step on the accelerator, increase the number of RPM to 2500, keep it for 5 seconds.
8. Click “Next” to get the results.
9. Drop-down to share the results.

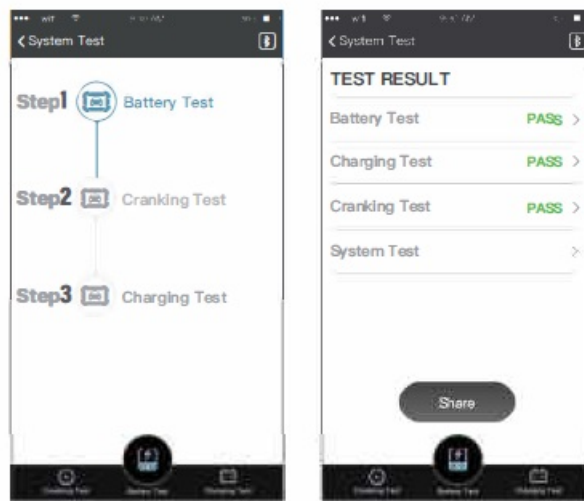


System Test (Overall Test for Battery)

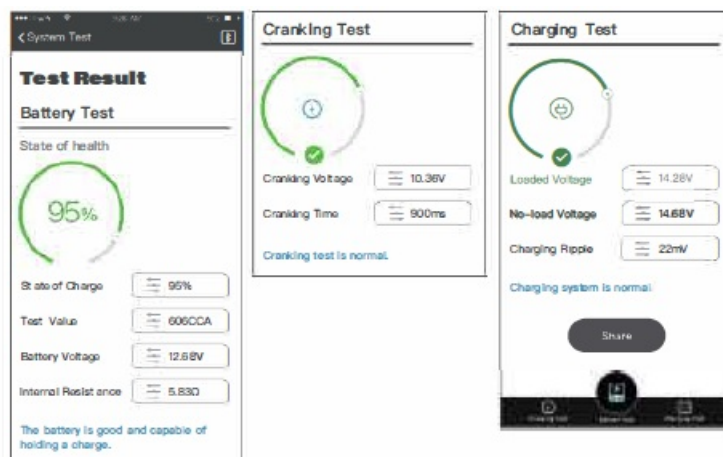
Select “System Test” in the upper right corner, or swipe the home screen left to the system test options.



Click “Start” to enter System Test operation interface and complete all tests (refer to Battery Test, Cranking Test, Charging Test for details) Click the right arrow to access to each test result report.



Click “System Test” to access to each test result report.



Drop down to share test results.

Technical Specification

- Working Temperature: -20°C~65°C (-4°F~ 140°F)
- Storage Temperature: -20°C~ 70°C (-4° F~ 158° F)
- Dimensions: 81 *68*27 mm (3.19*2.68 .06 inches)
- Weight: 250 g (8.81 oz)

Warranty

\$ TOPDON Two Years Limited Warranty

The TOPDON Company warrants to its original purchaser that TOPDON products will be free from defects in material and workmanship for 24 months from the date of purchase (Warranty Period). For the defects reported during the Warranty Period, TOPDON will, according to the technical support analysis and confirmation, either repair or replace the defective part or product.

This limited warranty is void under the following conditions:

Misused, disassembled, altered, or repaired by a non-TOPDON technical repair specialist Careless handling and violation of operation. Notice:All information in this manual is based on the latest information available at the time

of publication and no warranty can be made for its accuracy or completeness. TOPDON reserves the right to make changes at any time without notice.

Warnings

- DO NOT place the tester near the engine or exhaust pipe to avoid damage from high temperatures.
- DO NOT smoke, cause sparks, or strike matches near the battery when testing.
- DO NOT remove battery clamps while testing
- DO NOT put the tester into a highly humid or dusty environment. DO NOT disassemble the tester.

FCC STATEMENT

This device complies with Part 15 of the FCC Rules. Operation is subject to the following two conditions:

1. This device may not cause harmful interference, and
2. This device must accept any interference received, including interference that may cause undesired operation.
3. Warning: Changes or modifications not expressly approved by the party responsible for compliance could void the user's authority to operate the equipment.
4. NOTE: This equipment has been tested and found to comply with the limits for a Class B digital device, pursuant to Part 15 of the FCC Rules. These limits are designed to provide reasonable protection against harmful interference in a residential installation. This equipment generates uses and can radiate radio frequency energy and, if not installed and used in accordance with the instructions, may cause harmful interference to radio communications. However, there is no guarantee that interference will not occur in a particular installation. If this equipment does cause harmful interference to radio or television reception, which can be determined by turning the equipment off and on, the user is encouraged to try to correct the interference by one or more of the following measures:
5. Reorient or relocate the receiving antenna.
6. Increase the separation between the equipment and receiver.
7. Connect the equipment into an outlet on a circuit different from that to which the receiver is connected.
8. Consult the dealer or an experienced radio/TV technician for help.
9. RF warning statement:
10. The device has been evaluated to meet general RF exposure requirements. The device can be used in portable exposure conditions without restriction.

cautions

- Use this tester in accordance with these instructions, taking into account the working conditions and the work to be performed. Hazardous results could occur if the tool is used for purposes not intended.
- Before testing, make sure the battery terminals are clean. Grease and dust could result in inaccurate test results.
- Wear eye protection when working around batteries.
- Check the insulation layer of the battery clamps is in good condition (no damage, bareness, or disconnection) to avoid electric shock.
- Test in a well-ventilated area. Vehicle exhaust contains toxic carbon monoxide.
- Keep hair, hands, and clothing as well as tester leads and cords away from moving blades and belts.

- Keep the tester out of the reach of children.

FAQ

- **Q: Is BT MOBILE Lite able to test vehicle alternator?**

A: It can test the alternator.

- **Q: Is BT MOBILE Lite able to test motorcycle batteries?**

A: It can test the 12V battery, between 100 and 2000 CCA. If the motorcycle battery is within these values, then yes.

- **Q: How to set the CCA range?**

A: You can set the data near to the CCA standard number of your battery.

- **Q: Is BT MOBILE Lite able to test 12V deep cycle batteries?**

A: Yes.

- **Q: Will BT MOBILE Lite work on motorcycle charging systems?**

A: It works on a 12V system and the CCA range is between 100-2000.

- **Q: Will BT MOBILE Lite work with marine batteries?**

A: Yes, it can work with marine batteries

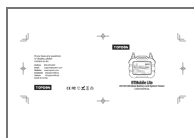
- **Q: What do SOH, SOC, and BAT mean?**

A: The SOH refers to the “State of Health”. The SOC is the “State of Charge” and the BAT is the “Resistance Value” of the battery.

- **Q: Will this accurately load test ATV batteries?**

A: Yes, it can accurately load test ATV batteries.

Documents / Resources



[Topdon Technology BTMobile Lite Wireless Battery and System Tester](#) [pdf] User Manual BTMOBILELITE, 2AVYW-BTMOBILELITE, 2AVYWB-TMOBILELITE, BTMobile Lite Wireless Battery and System Tester, Wireless Battery and System Tester

References

- [Ogmail.com](https://www.ogmail.com)