



# TOPBAND 24GA4D Remote Controller User Manual

[Home](#) » [TOPBAND](#) » TOPBAND 24GA4D Remote Controller User Manual 

# TOPBAND

## 24GA4D Remote Controller User Manual

### Contents

- [1 Packing List](#)
- [2 CAUTIONS AND NOTE](#)
- [3 IMPORTANT SAFETY INSTRUCTIONS](#)
- [4 SAVE THESE INSTRUCTIONS](#)
- [5 Abnormal status operation guide](#)
- [6 Specification](#)
- [7 Documents / Resources](#)
  - [7.1 References](#)
- [8 Related Posts](#)

### Packing List

Remote controller 1 set

User manual 1 set

This user manual is applicable to A4D product model. Please read this manual carefully and keep it properly before using the product.

### CAUTIONS AND NOTE

This device contains license-exempt transmitter(s)/receiver(s) that comply with Innovation, Science and Economic Development Canada's licence-exempt RSS(s).

Operation is subject to the following two conditions:

1. This device may not cause interference.
2. This device must accept any interference, including interference that may cause undesired operation of the device.

Changes or modifications to this unit not expressly approved by the party responsible for compliance could void the user's authority to operate the equipment.

This equipment has been tested and found to comply with the limits for a Class B digital device, pursuant to Part 15 of the FCC Rules.

These limits are designed to provide reasonable protection against harmful interference in a residential installation.

This equipment generates uses and can radiate radio frequency energy and, if not installed and used in accordance with the instructions, may cause harmful interference to radio communications.

However, there is no guarantee that interference will not occur in a particular installation. If this equipment does cause harmful interference to radio or television reception, which can be determined by turning the equipment off and on, the user is encouraged to try to correct the interference by one or more of the following measures:

- Reorient or relocate the receiving antenna.
- Increase the separation between the equipment and receiver.
- Connect the equipment into an outlet on a circuit different from that to which the receiver is connected.
- Consult the dealer or an experienced radio/TV technician for help.

This appliance has a polarized plug (one blade is wider than the other). As a safety feature, this plug will fit in a polarized outlet only one way. If the plug does not fit fully in the outlet, reverse the plug. If it still does not fit, contact a qualified electrician. Do not attempt to defeat this safety feature.

This device complies with Part 15 of the FCC Rules. Operation is subject to the following two conditions: (1) this device may not cause harmful interference, and (2) this device must accept any interference received, including interference that may cause undesired operation.

## **IMPORTANT SAFETY INSTRUCTIONS**

When using electrical appliances, especially when children are present, basic safety precautions should always be followed, including the following:

**READ ALL INSTRUCTIONS BEFORE USING**

**DANGER – To reduce the risk of electrocution:**

1. Always unplug this appliance immediately after using.
2. Do not use while bathing.
3. Do not place or store appliance where it can fall or be pulled into a tub or sink.
4. Do not place in or drop into water or other liquid.
5. Do not reach for an appliance that has fallen into water. Unplug immediately

**WARNING – To reduce the risk of burns, electrocution, fire, or injury to persons:**

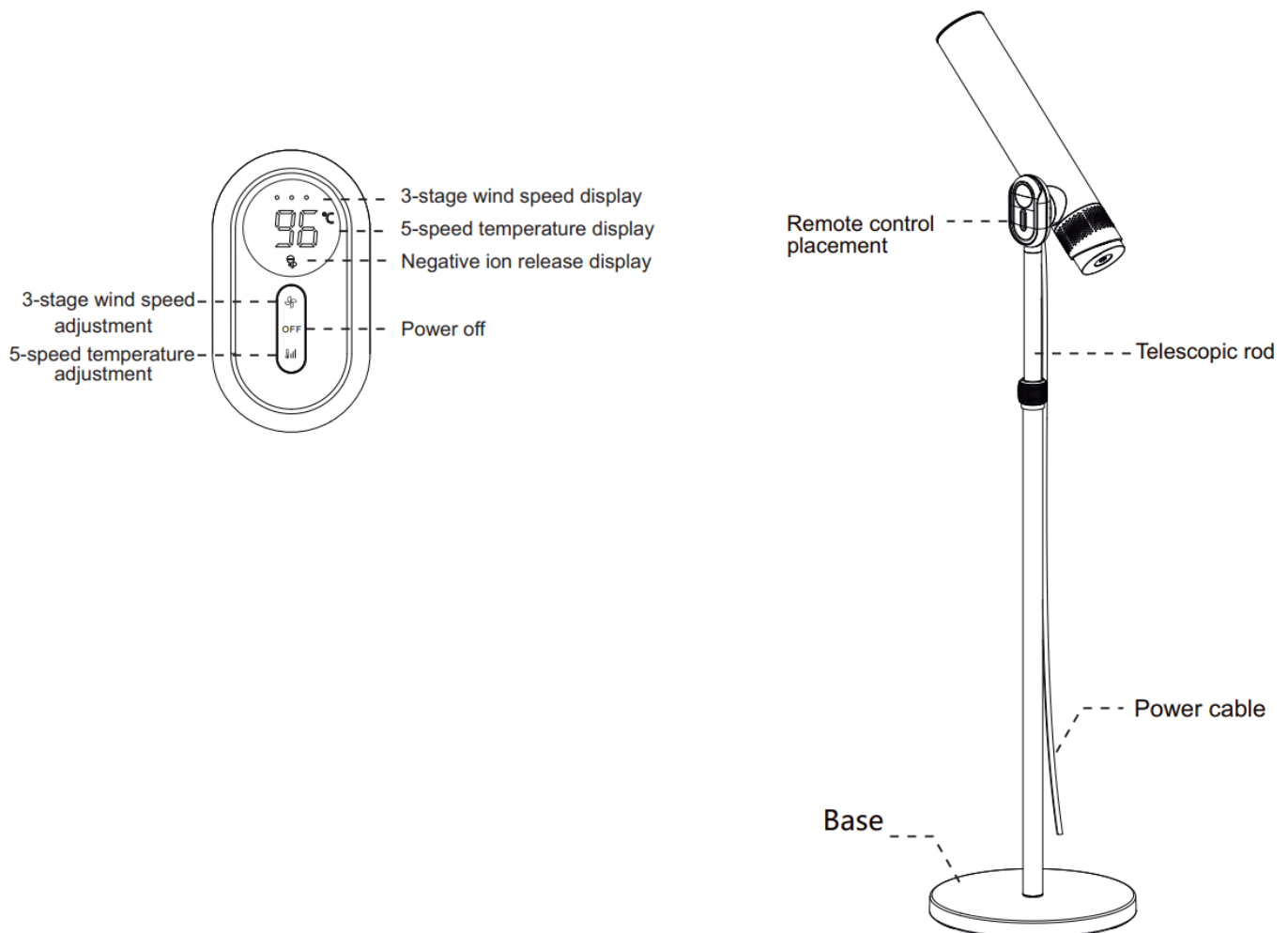
1. An appliance should never be left unattended when plugged in.
2. Close supervision is necessary when this appliance is used by, on, or near children or individuals with certain disabilities.
3. Use this appliance only for its intended use as described in this manual. Do not use attachments not recommended by the manufacturer.

4. Never operate this appliance if it has a damaged cord or plug, if it is not working properly, or if it has been dropped, damaged, or dropped into water. Return the appliance to a service center for examination and repair.
5. Keep the cord away from heated surfaces. Do not wrap the cord around the appliance.
6. Never block the air openings of the appliance or place it on a soft surface, such as a bed or couch, where the air openings may be blocked. Keep the air openings free of lint, hair, and the like.
7. Never use while sleeping.
8. Never drop or insert any object into any opening or hose.
9. Do not use outdoors or operate where aerosol (spray) products are being used or where oxygen is being administered.
10. Do not use an extension cord with this appliance.
11. Household use only.

## SAVE THESE INSTRUCTIONS

1. Do not direct hot air toward eyes or other heat sensitive areas.
2. Attachments may be hot during use. Allow them to cool before handling.
3. Do not place appliance on any surface while it is operating.
4. While using the appliance, keep your hair away from the air inlets.
5. Do not operate with a voltage converter.

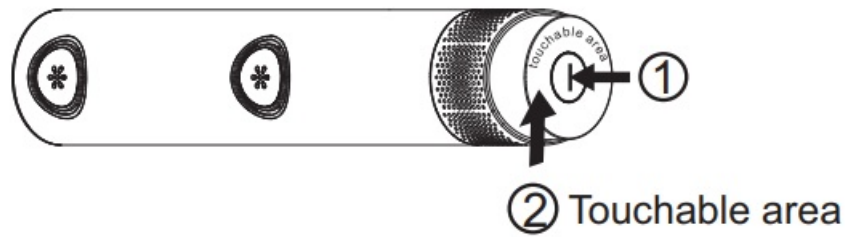
## Product introduction



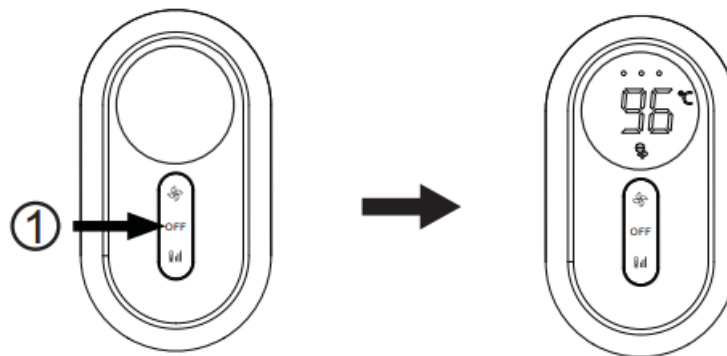
This symbol represents “Do not use this device in a bathtub, shower, or water-filled reservoir”

## Installation guide

1. Press the power button .the mood light turn on, and you will hear a “beep”. Quickly to start on-o button .the hair dryer is on.



2. Press the button to illuminate the screen ,then you can adjust the hair dryer with the remote controller.  
You can press the button to close the hair dryer when the screen is on.



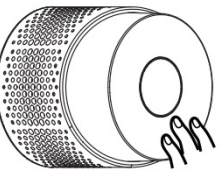

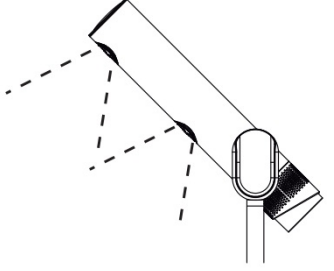
If the hair dryer is not powered on, please check whether the connection between the rod and the base is tightened.

## Abnormal status operation guide

### Remote controller Re-Connect

When the dryer is powered on normally, if the remote control has power but cannot control the hair dryer, please repair the remote control as follows:

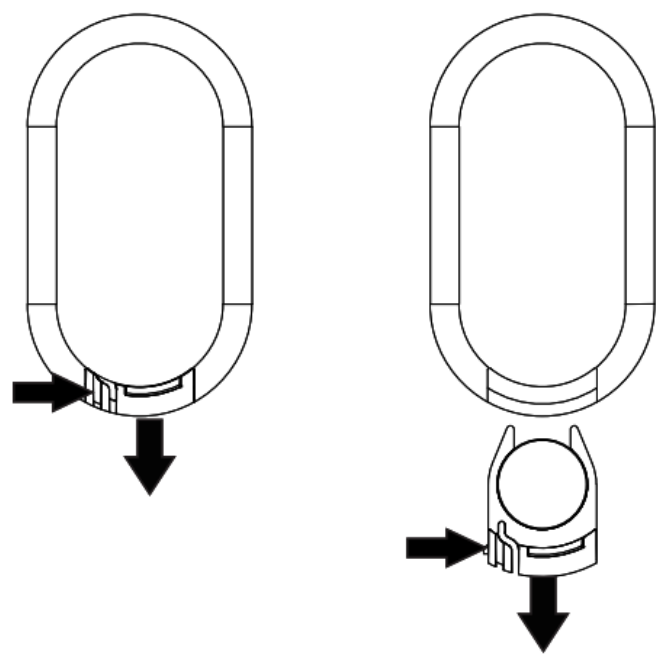
Prepare Make sure the hair dryer is powered on and the power button switch is pressed

Press and hold the button for about 3 seconds, the hair dryer will make a “beep” sound, the mood light will flash, you can let go at this time.	Press the button of the remote control	After the hair dryer receives the pairing signal from the remote control, the mood light changes from blinking to steady light, the hair dryer starts to blow hot air, and the pairing is successful.
		

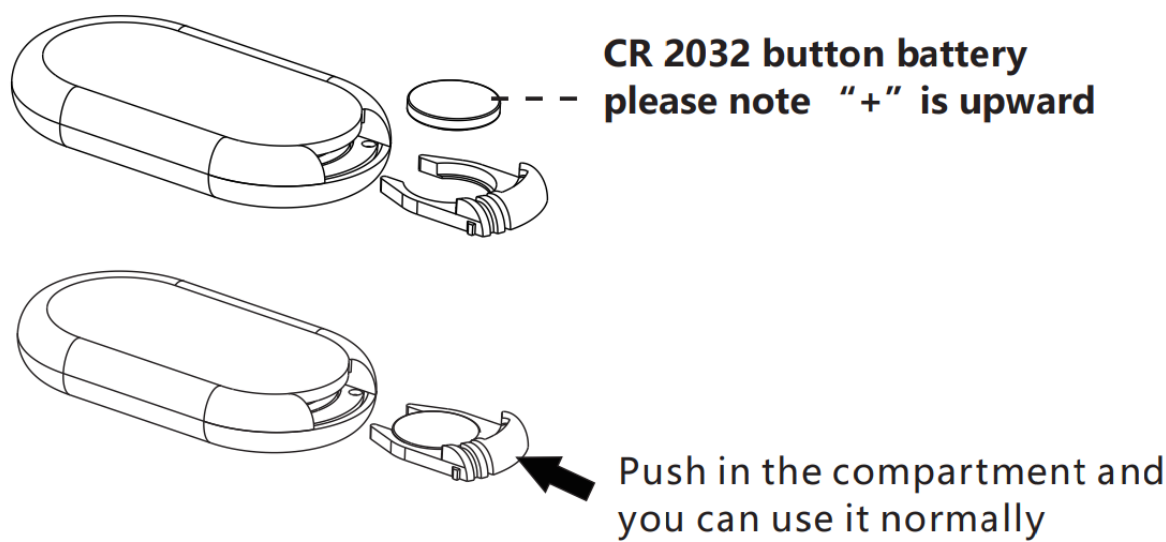
### The instructions of remote controller battery replacement

If the display does not light up after the remote control is turned on, the battery may be insufficient. Please replace

the battery as follows:



Pull out while pressing the left side to extract the battery compartment.



**Note:** When the battery is replaced, if the remote controller can not control the hair dryer, please re-connect with the main body

**Specification**

Product name	Remote controller
Product model	A4D
Rated voltage	3V
Date of manufacture	See commodity for details

TOPBAND

Documents / Resources

	<p><b>TOPBAND 24GA4D Remote Controller</b> [pdf] User Manual</p> <p>24GA4D, 2ADDW-24GA4D, 2ADDW24GA4D, 24GA4D Remote Controller, 24GA4D, Remote Controller, Controller</p>
---	--

References

Manuals+.