




TopAction B8, B10, B12 Series Cycle Computer User Manual

[Home](#) » [TOPACTION](#) » TopAction B8, B10, B12 Series Cycle Computer User Manual 

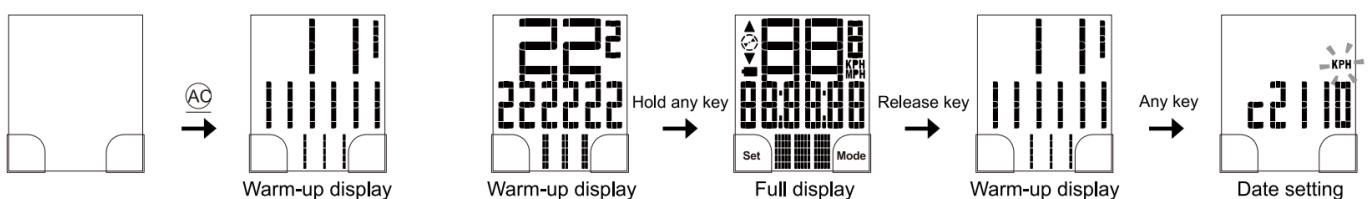
TopAction

B8, B10, B12 Series Cycle Computer
User Manual

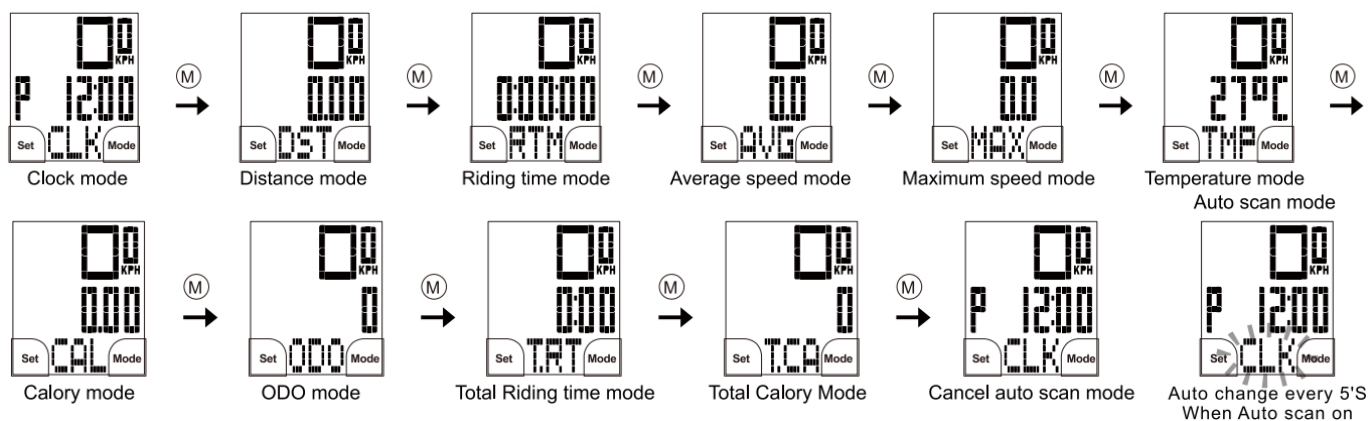
Contents

- [1 All clear \(initial\)](#)
- [2 Sensor Re – Pairing](#)
- [3 Speed stop status](#)
- [4 Data Reset](#)
- [5 Wireless Installation](#)
- [6 Key function description](#)
- [7 Warning / Caution](#)
- [8 FUNCTION](#)
- [9 Documents / Resources](#)
- [10 Related Posts](#)

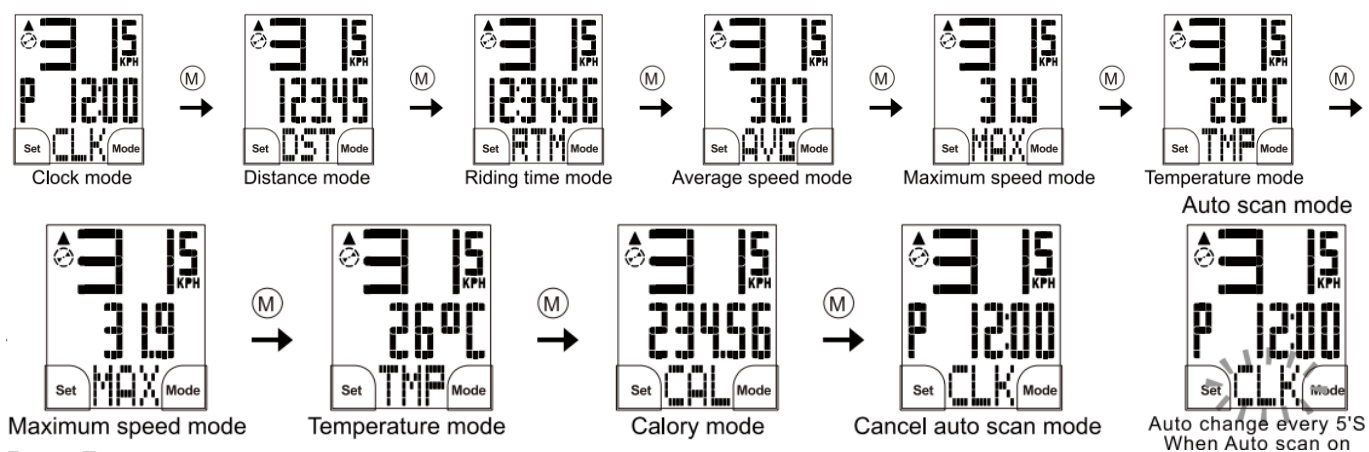
All clear (initial)



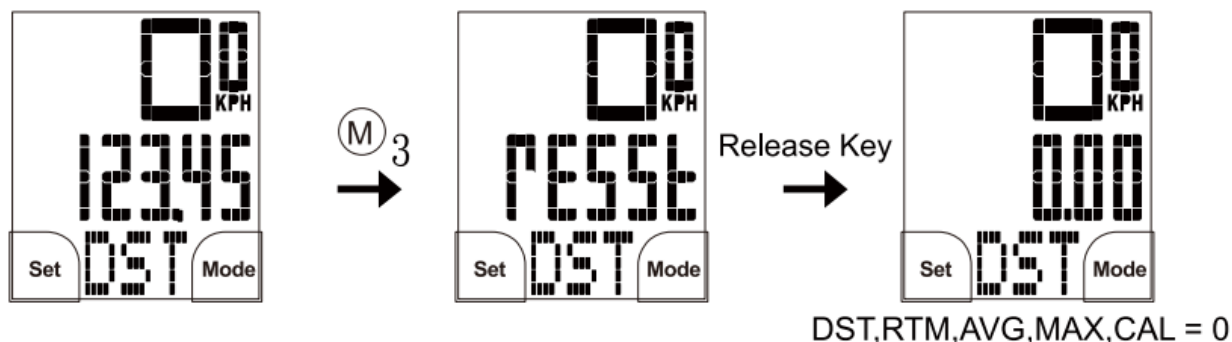
Data setting (Auto quit after 20'S without any operating)



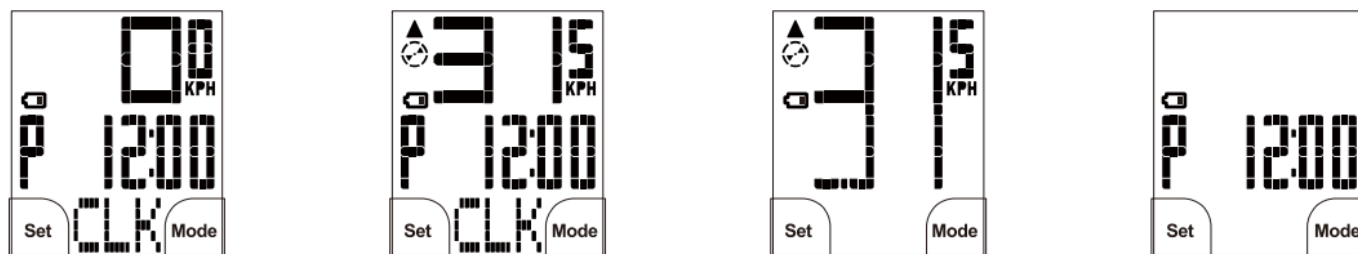
Speed stop status



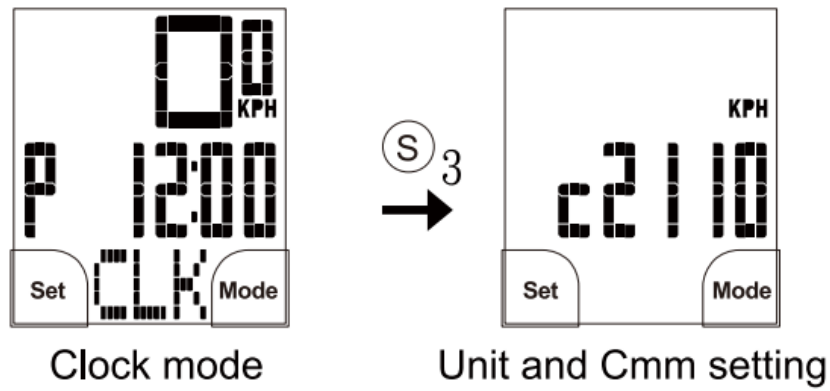
Data Reset



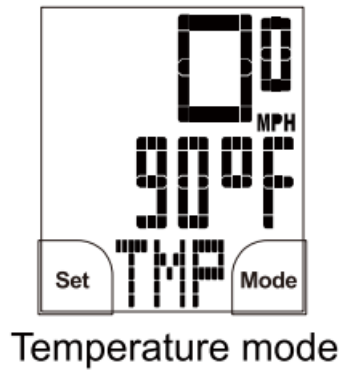
Low Battery indicator: Change battery immediately when the symbol appears, after changing battery,the symbol may keep displaying for 1 or 2 minutes,due t o there is a big capacitor inside the computer.“H Gk SE.



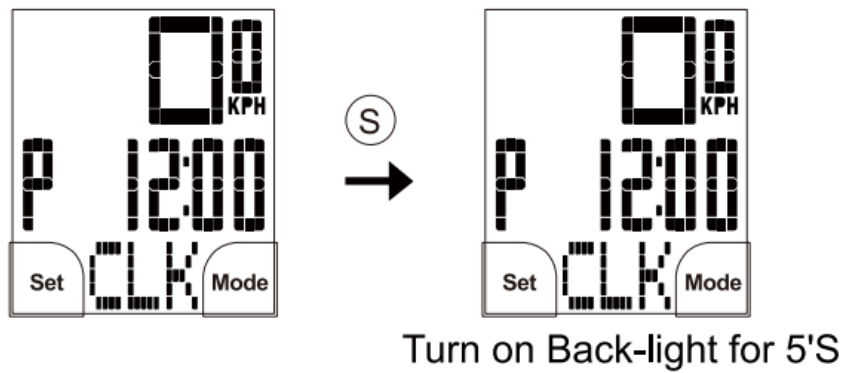
Enter data setting mode when under Speed stop status



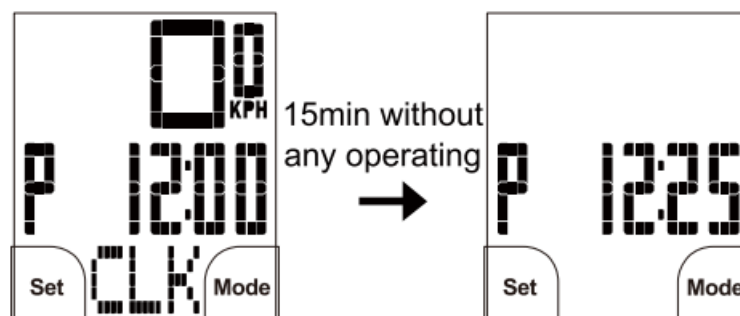
Imperial



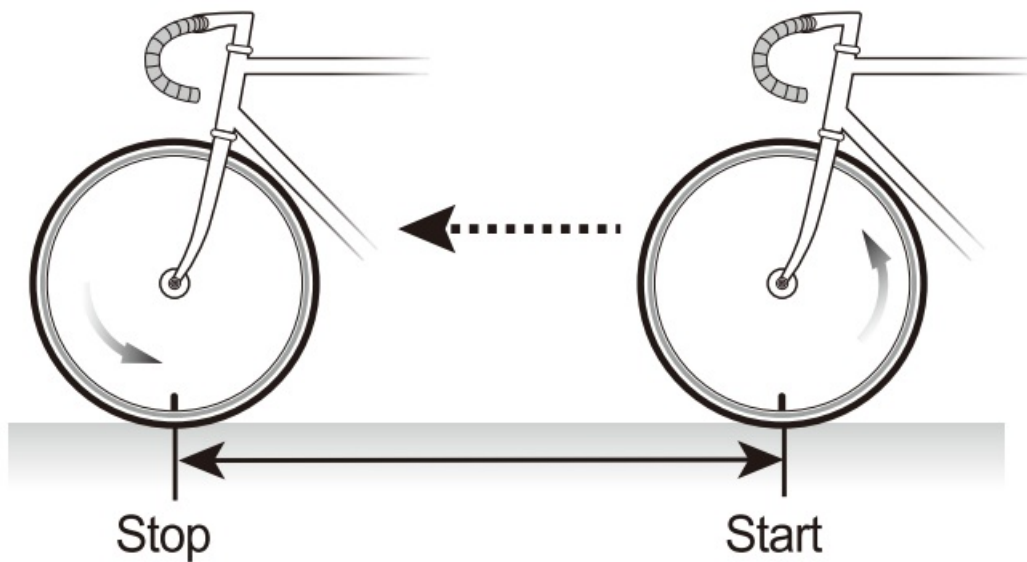
Turn on Back-light/optional



Power off



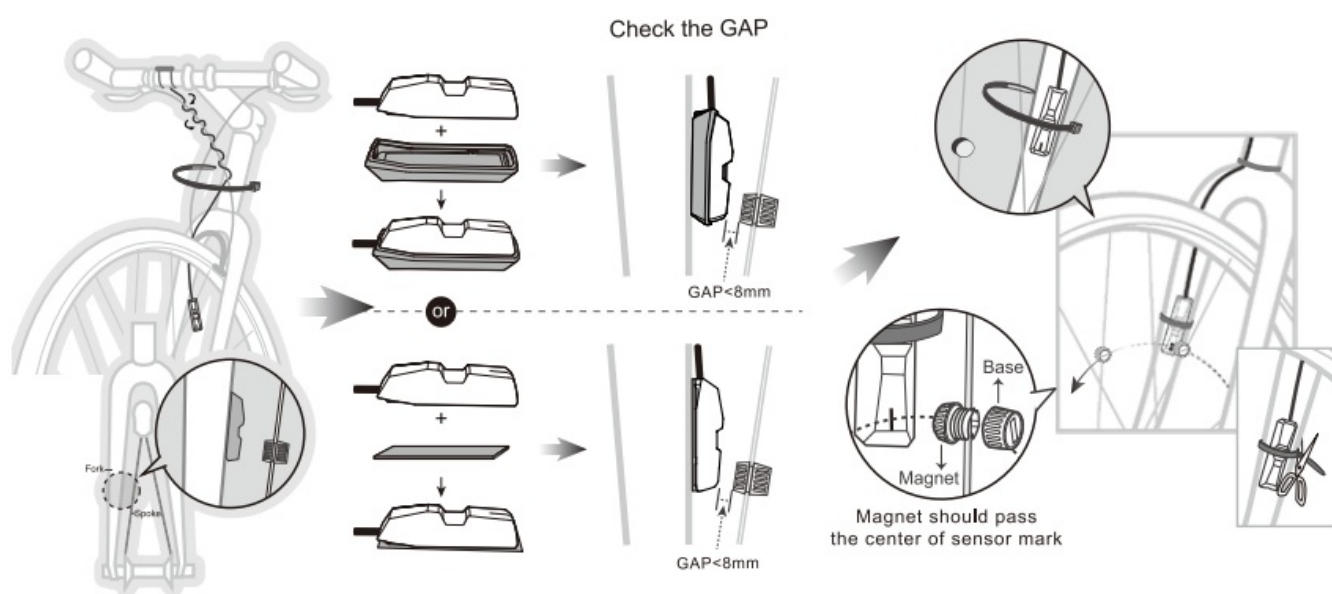
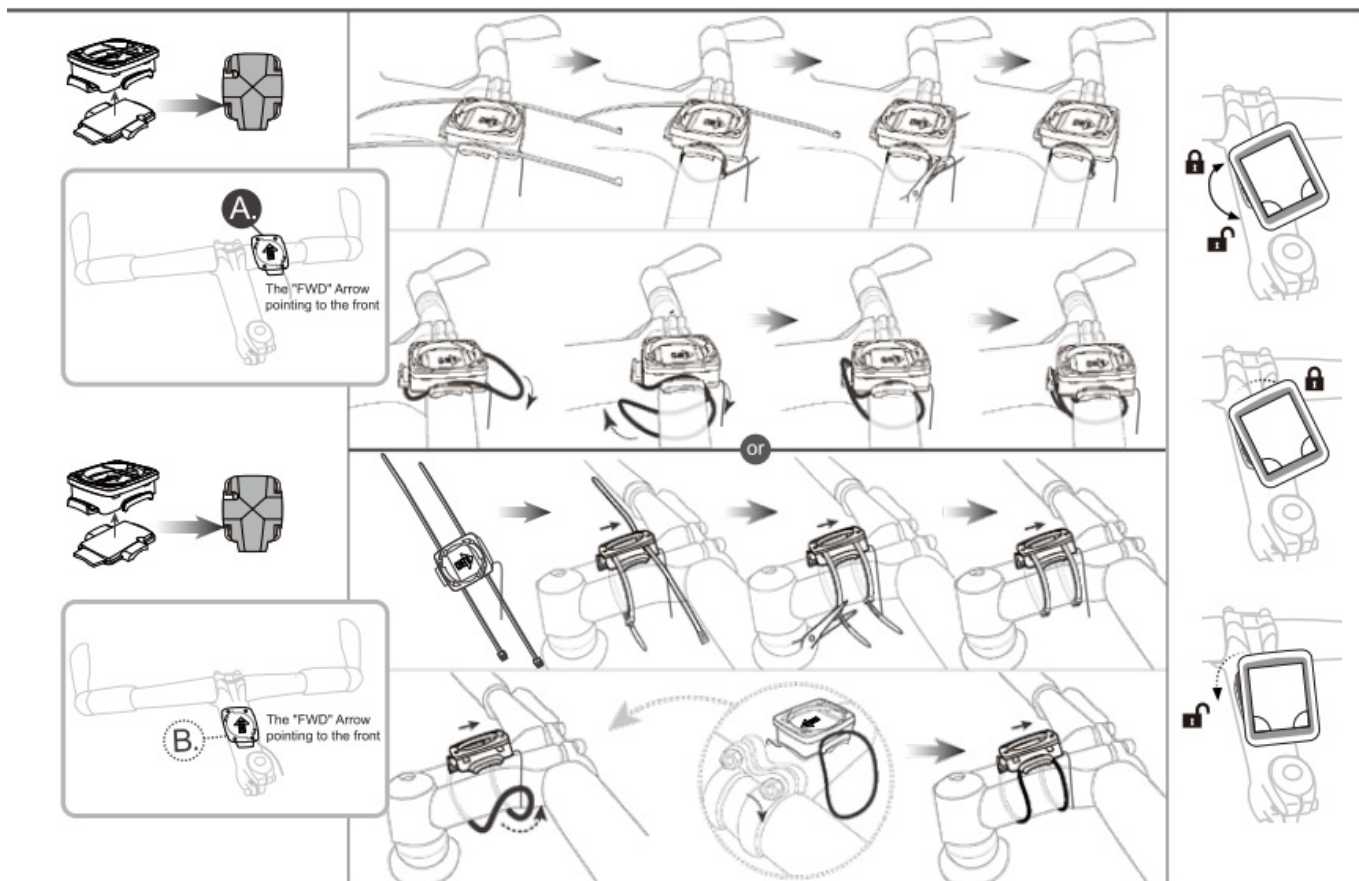
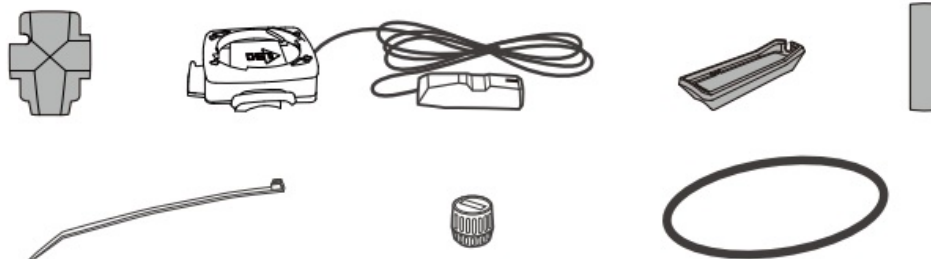
Wheel Circumference Measurement

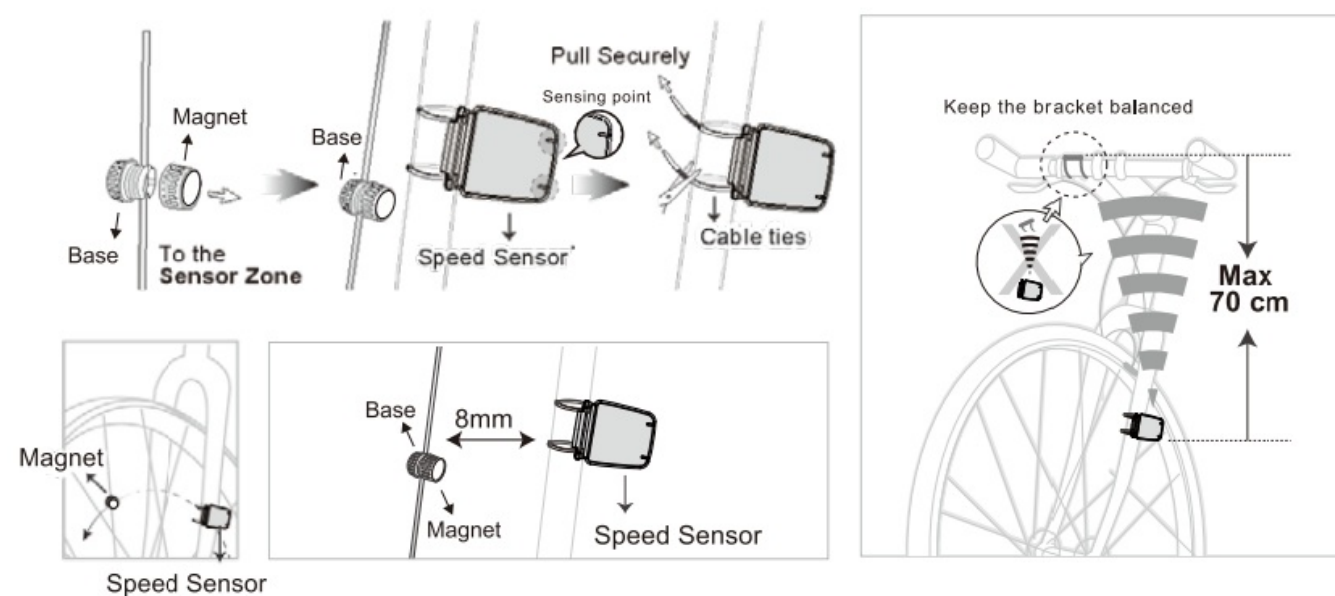
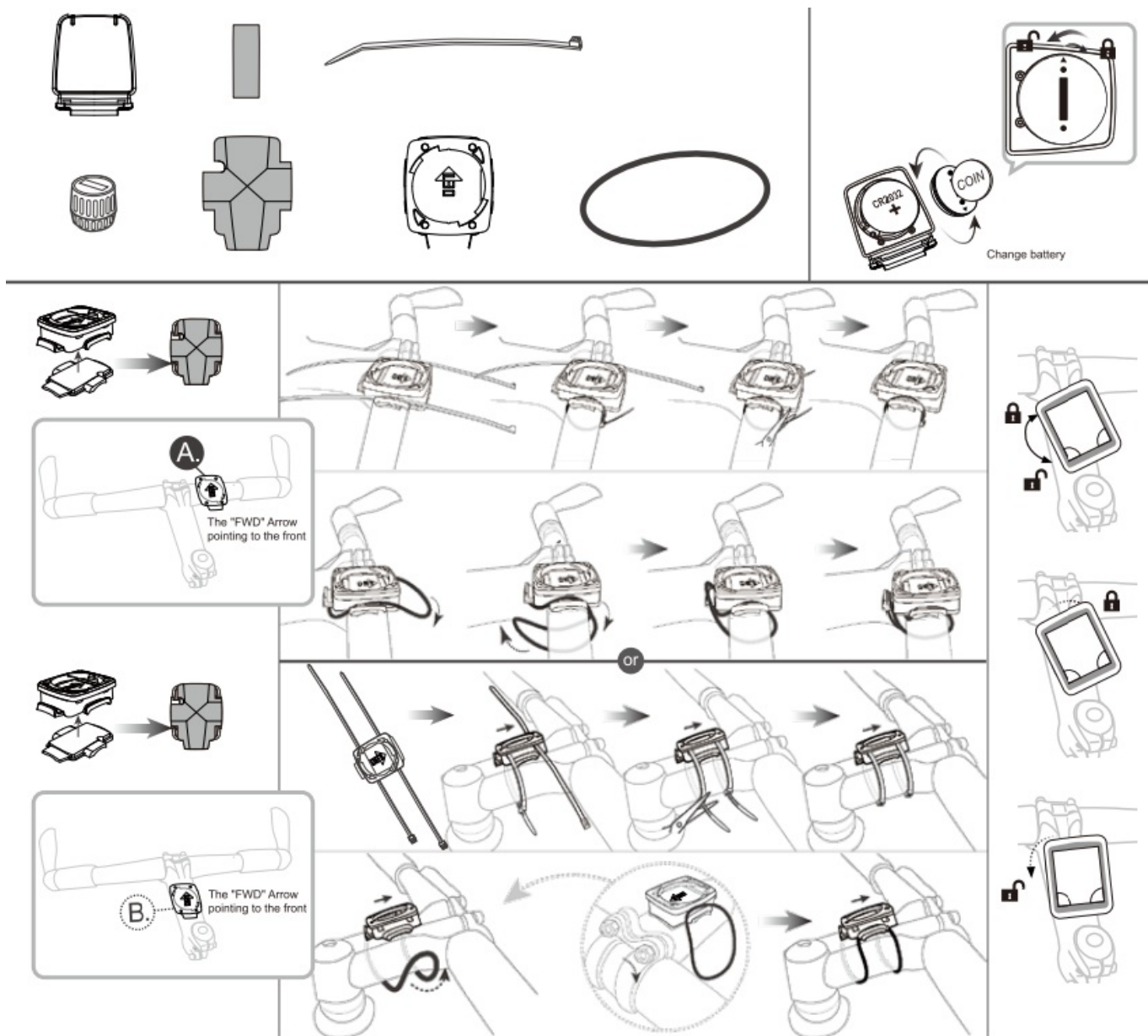


Wheel Circumference

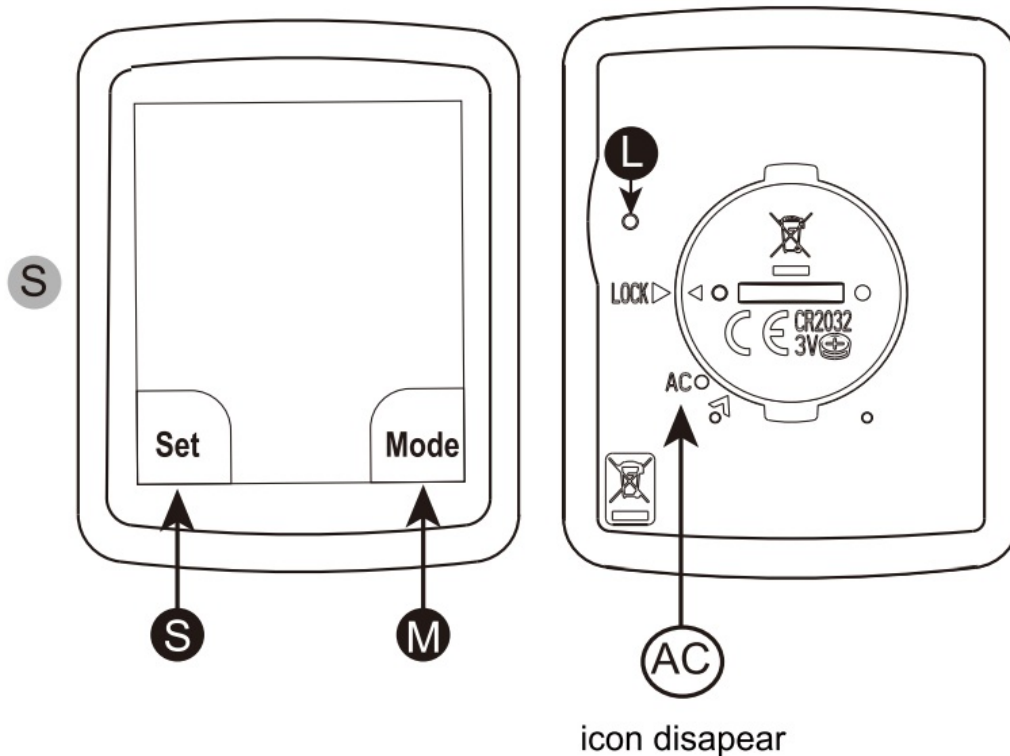
Tire size reference table							
Tire Size	Cirumferen ce Number	Tire Size	Cirumferen ce Number	Tire Size	Cirumferen ce Number	Tire Size	Cirumferenc e Number
18 Inch	1436 mm	26×1.40	1995 mm	28 Inch	2234 mm	702,a,,,,-	2110 mm
20 Inch	1596 mm	26×1.50	2030 mm	28.6 Inch	2281 mm	700×200	2092 mm
22 Inch	1759 mm	26×1.75	2045 mm	29×2.10	2324 mm	700×230	2112 mm
24×1.75	1888 mm	26×1.95	2099 mm	29×2.20	2333 mm	700x25C	2124 mm
24 Inch	1916 mm	26×2.10	2133 mm	29×2.35	2354 mm	700x28C	2136 mm
24×1318	1942 mm	27.5 x1.95	2167mm			700x32C	2155 mm
		27.5 x2.10	2192mm			700x35C	2164 mm
		27.5 x 2.35	2229mm			700x38C	2174 mm

Wireless Installation





Key function description



1. Mode KEY

M : means hold Mode key for 1's

M : means hold Mode key for 3's

M : means digital flash

All clear (**AC**) the computer :

Press (**S**) to All clear (initial) the cycle computer Hold 63's to check and reset EEPROM (This operating for factory only)

Press (**M**) for enter data setting mode

2. Data setting mode :

Press(**M**) for increase setting digital

Press(**S**) for change to next setting digital

Hold(**S**) 1'S for change to next setting mode

Hold (**S**)3'S for quit data setting mode

3. General mode :

Press(**M**) for change function display

Hold (**M**) 3'S for reset trip data

Hold (**S**) 3'S for enter data setting mode

Press(**L**) for Lock/Unlock touch key

Warning / Caution

1. Always pay attention to the road condition
2. Before the first time you use the computer, and after you change the battery, please do ALL Clear
3. Do not leave the computer under high temperature or direct sunlight for long
4. Do not disassemble the computer
5. Please check the position of magnet and sensor periodically

6. Do not use alcohol, thinner or benzine to clean the computer and accessories

Trouble Shooting		
Problem	Check Point	Solution
No display	1.The battery power 2.The installation of battery	1.Change battery 2.The positive pole (+) should face the battery cap
(No display of speed) or (displaying wrong data)	1.Computer is still in the setting mode 2.The distance between magnet and sensor 3.The position of sensor and computer 4.The setting of tire size 5.Check the battery of sensor 6.Interference nearby	1.Finish the setting and leave the setting mode 2.3. Please refer to the setup manual 4.Please refer to the installation manual 5.Change the battery 6.Stay away from the interference
The computer does not work properly		Do All Clear and then process the setting again
The screen turns black	The computer is under high temperature for long	Move the computer to cool place and it will work properly soon
The reaction of computer is slow	The temperature is below 0°C(32°F)	Put the computer above 0°C(32°F) for a while and it will work properly
Limited Warranty: (computer and sensor only) One year from the date you purchase the computer		

FUNCTION

Function	Specification	B8 / B8W	B10 / B10W	B12 / B12W
Current Speed	0.0-99.9 Kph / 0.0-62.0 mph	•	•	•
Average Speed	0.0-99.9 Kph / 0.0-62.0 mph	•	•	•
Maximum Speed	0.0-99.9 Kph / 0.0-62.0 mph	•	•	•
Trip Distance	0-999.99 Km / 0-999.99 mile	•	•	•
Odometer	0-999999 Km / 0-999999 mile	•	•	•
Riding Time	0:00:00- 99:59:59	•	•	•
Total Riding Time	0:00- 9999:59			•
Speed Pacer	Compare with Average Speed		•	•
12/24 Hours Clock	1:00- 12:59 / 0:00-23:59	•	•	•
Calory consumption	0-9999.99 Kcal		•	•
Total Calory consumption	0-999999 Kcal			•
Temperature	-10-60°C/14-140°F	•	•	•

TopAction

Documents / Resources



[TopAction B8, B10, B12 Series Cycle Computer](#) [pdf] User Manual

B8 B10 B12 Series Cycle Computer, B8 Series Cycle Computer, B10 Series Cycle Computer, B12 Series Cycle Computer, Cycle Computer, Computer, B8w, B10w, B12w

[Manuals+](#).