



TONMIND SIP-D26V Smart IP Video Intercom User Manual

[Home](#) » [TONMIND](#) » TONMIND SIP-D26V Smart IP Video Intercom User Manual 

TONMIND SIP-D26V Smart IP Video Intercom User Manual



Contents

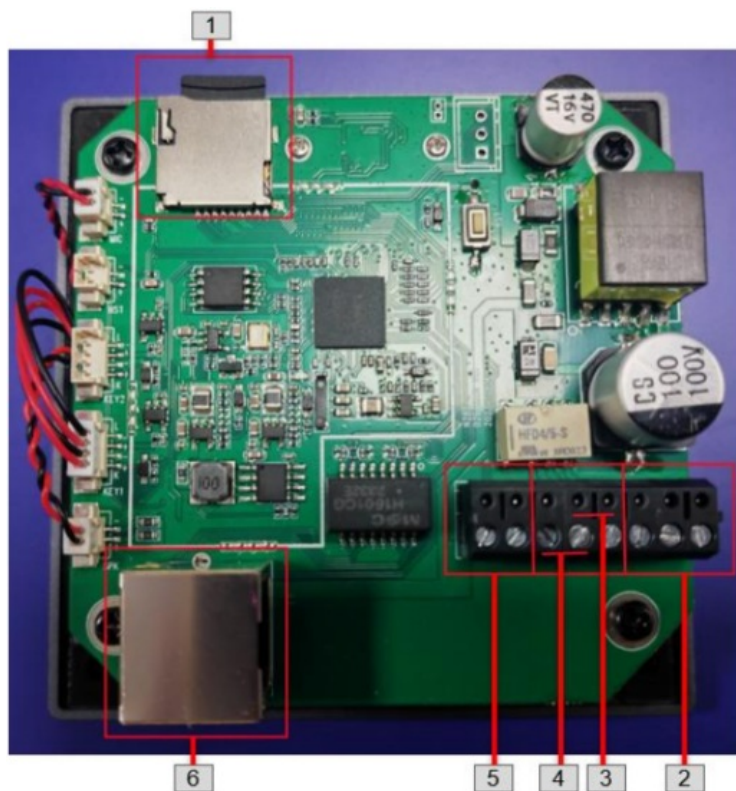
- [1 Overview](#)
- [2 Interface Description](#)
- [3 Web Configuration](#)
- [4 Status](#)
- [5 SIP Setting](#)
- [6 Basic Setting](#)
- [7 Media File](#)
- [8 Storage](#)
- [9 Network Setting](#)
- [10 Advance Setting](#)
- [11 RTP Multicast](#)
- [12 Schedule](#)
- [13 Http URL](#)
- [14 System](#)
- [15 Security](#)
- [16 Upgrade](#)
- [17 IPTool Configuration](#)
- [18 Documents / Resources](#)
 - [18.1 References](#)
- [19 Related Posts](#)

Overview

The SIP-D26V is a smart IP video intercom designed for two-way audio communication over IP networks. It is compatible with SIP & ONVIF protocols, enduring seamless integration with VoIP systems and security networks. The device is equipped with echo cancellation, automatic gain control, and noise reduction features to ensure clear audio quality, complemented by 2M pixel camera for high-definition video. The inclusion of a TF card slot allows for convenient storage of recorded footage. It supports PoE power supply and has a robust alloy shell, making it both durable and easy to install. With its comprehensive specifications and features, the SIP-D26V is an excellent choice for modern communication needs in secure environments.



Interface Description



1	SD card Interface	Video storage
2	Relay	NC, COM, NO
3	IO OUT	
4	IO IN	
5	DC power in	12V in
6	POE	802.3af

Wed Configuration

The web configuration encompasses all function settings. When both the device and your computer are connected to the same network, please open a browser and type in <http://192.168.5.200>. Then, log in using the default username and password provided below.

Username: admin

Password: tm1234

LoginIntercom

Usernameadmin

Password*****

LanguageEnglish

Sign inCancel

Forgot Password?

Status

You can access the firmware version, available space, and status of two SIP accounts for the SIP-D26V. Additionally, you can locate current network information such as Mac address, IP address, gateway, and more.



Status	
Sip Setting >	Device Time 2024-03-02 08:19:35
Basic Setting >	Device ID 5034D468287AA30C
Network Setting >	Firmware Ver D26V-V1.0.23
Advance Setting >	Free Space 4072KB
System >	SIP1 Status NONE
	SIP2 Status NONE
	Network
	MAC Address A2:C0:A4:3C:46:A1
	IP Address 192.168.5.233
	Subnet Mask 255.255.255.0
	Gateway 192.168.5.1
	Primary DNS 218.85.152.99
	Secondary DNS 218.85.157.99
	Refresh

SIP Setting

SIP Account

Each device supports two SIP accounts. Fill in the SIP extension messages in the provided blanks, and save the configuration. Afterwards, you can check whether it successfully registers on the “Status” page or not.


Outbound Proxy: Support to set outbound server, choose Disable or Enable.

Expire Time: Set the expire time registered account information.

Ringing Tone: 10 users upload media files.

Auto Answer: Answer immediately and answer delay when a calling income.

Encryption: Support SRTP or None

Account	<input type="text" value="Account 1"/>	NONE
User Name	<input type="text"/>	
Auth ID	<input type="text" value="6004"/>	
Password	<input type="password" value="****"/>	
Display Name	<input type="text" value="6004"/>	
Server Host	<input type="text" value="192.168.5.212"/>	
Server Port	<input type="text" value="5060"/>	
Outbound Proxy	<input type="text" value="Disable"/>	
Expire Time	<input type="text" value="180"/>	Seconds
Ringing Tone	<input type="text" value="Custom"/>	
	<input type="text" value="440/2000,0/4000"/>	
Auto Answer	<input type="text" value="Answer Delay"/>	
Delay Time (0 - 600)	<input type="text" value="2"/>	Seconds
Encryption	<input type="text" value="None"/>	
<input type="button" value="Save"/>		

SIP Advanced

SIP Protocol: UDP, TCP, TLS.

Audio Codec Setting: Four audio codes to compatible with major audio sources.

Video Codec Setting: Now only support H264 format.

SIP Protocol	<input type="text" value="UDP"/>
Audio Codec Setting	<div><input checked="" type="checkbox"/> OPUS</div> <div><input checked="" type="checkbox"/> G.722</div> <div><input checked="" type="checkbox"/> G.711U</div> <div><input checked="" type="checkbox"/> G.711A</div>
Video Codec Setting	<div><input checked="" type="checkbox"/> H264</div>
<input type="button" value="Save"/>	

Basic Setting

Audio Setting

Volume: Adjust volume at 0-100.

Amp Auto OFF: It's set defaulted as ON, then there is no noise went not broadcasting.

Jitter Buffer: To make the audio more stable.

HPF: High Pass Filter

NR: Noise Reduction

Volume (0-100)	<input type="text" value="60"/>	
Amp Auto OFF	<input type="text" value="YES"/>	▼
Jitter Buffer (60 - 2000)	<input type="text" value="180"/>	ms
HPF	<input type="checkbox"/>	
NR	<input type="checkbox"/>	
<input type="button" value="Save"/>		

MIC

Gain: Manual set, four option: none, low, middle, high.

Volume: Adjust MIC volume at 0-100.

AEC (acoustic echo cancelling): To make a perfect sound quality.

AGC (automatic gain control): Three option: low, middle, high.

HPF: High Pass Filter

NR: Noise Reduction

Gain	<input type="text" value="None"/>	▼
Volume (0-100)	<input type="text" value="60"/>	
AEC	<input checked="" type="checkbox"/>	
AGC	<input checked="" type="checkbox"/>	
AGC Target	<input type="text" value="Middle"/>	▼
HPF	<input checked="" type="checkbox"/>	
NR	<input checked="" type="checkbox"/>	
NR Level	<input type="text" value="1"/>	▼
<input type="button" value="Save"/>		

Media File

You can upload 10 media files as customers' demands: music, announcement, bells, etc.

#	Name	File
1	userfile1	bell1.mp3
2	userfile2	
3	userfile3	
4	userfile4	
5	userfile5	
6	userfile6	
7	userfile7	
8	userfile8	
9	userfile9	
10	userfile10	

Video Setting

Display: Manual set and default set

Brightness: <input type="range" value="85"/>	Contrast: <input type="range" value="70"/>
Saturation: <input type="range" value="64"/>	Sharpness: <input type="range" value="104"/>
BLC: <input type="range" value="0"/>	HLC: <input type="text" value="Off"/>
2D NR: <input type="range" value="18"/>	3D NR: <input type="range" value="10"/>
White Balance: <input type="text" value="Auto"/>	White Balance R Gain: <input type="range" value="25"/>
White Balance G Gain: <input type="range" value="25"/>	White Balance B Gain: <input type="range" value="25"/>
Power Frequency: <input type="text" value="50Hz"/>	Forced Anti-flicker: <input type="text" value="Off"/>
Horizontal Tailor: <input type="range" value="0"/>	Vertical Tailor: <input type="range" value="0"/>
Mirror: <input type="text" value="Off"/>	Flip: <input type="text" value="On"/>
Defogging: <input type="text" value="Off"/>	Defogging Level: <input type="range" value="128"/>
Exposure Type: <input type="text" value="Auto"/>	Exposure Time: <input type="text" value="1/2000"/>

Main Stream: Manual set and default set.

Resolution:	<input type="text" value="1080P"/>
Frame Rate:	<input type="text" value="30 fps"/>
Bit Rate:	<input type="text" value="2 Mbps"/>
I-frame Interval(15-60):	<input type="text" value="30"/>
Quality:	<input type="text" value="Custom"/>
Bit Rate Control:	<input type="text" value="CBR"/>
Profile:	<input type="text" value="Main"/>

Sub Stream: Manual set and default set.

Resolution: D1

Frame Rate: 30 fps

Bit Rate: 512 Kbps

I-frame Interval(15-60): 30

Quality: Custom

Bit Rate Control: CBR

Profile: Main

Save

Reset Default

OSD: on-screen display

Enable OSD: ☒

Color Style: White text on black

Font Size: Standard

Overlay Items: ☒Title ☒Resolution ☒Bitrate

☒Time ☒Week

Date Position: Top-Right

Date Format: yyyy-mm-dd hh:mm

Title Position: Top-Right

Title Message: D26V

Save

Reset Default

Privacy Mask: Able for 5 area set.

#	Enable	Color	Draw Area
1	<input type="checkbox"/>	<div></div>	<div>Draw Area</div>
2	<input type="checkbox"/>	<div></div>	<div>Draw Area</div>
3	<input type="checkbox"/>	<div></div>	<div>Draw Area</div>
4	<input type="checkbox"/>	<div></div>	<div>Draw Area</div>
5	<input type="checkbox"/>	<div></div>	<div>Draw Area</div>

Save

Reset Default

Storage

Base Setting: Enable storage or not, allow overwrite or not, Max record time(minutes)

Enable Storage: ☒

Allow Overwrite: YES

Max Record Time: 10

Save

Reset Default

Record Schedule: Manual set and default set.

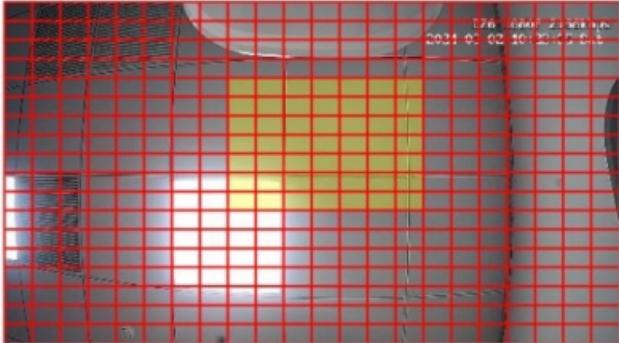
Enable Storage:	<input checked="" type="checkbox"/>
Video Stream:	Primary Stream
With Audio:	YES
Max Record Time:	10 min

Save

Reset Default

Motion Detection: After detecting as set, it starts to record video.

Enable:	<input type="checkbox"/>
Video Stream:	Primary Stream
With Audio:	YES
Pre-record:	3 s
Max Record Time:	90 s
Sensitivity	<input type="range"/>
Only Detect Human:	Enable
Block Count:	22x18



Add motion area : Drag from left to right. Remove motion area: Drag from right to left.

Save

Reset Default

SD Status

SD Card:	<div>Unmount</div> <div>Format</div>
Device Status:	Mount
Total Size:	58.21G
Used Size:	0M
Free Size:	58.21G
Used Percentage:	0.00%

Playback

The SIP-D26V allows you to save recorded footage, enabling you to playback and review it at your convenience. The playback feature displays a timeline where you can locate and watch specific recorded time periods highlighted in green below.



Network Setting

TCP/IP

DHCP: When you select DHCP and save the setting, IP address will be automatically assigned by a DHCP server. Afterward, you'll need to login again with the new IP address via your browser: 192.168.5.XXX.

Static IP Address: It is a default IP and will not be changed as following.

TONMIND

Tonmind SIP-D26V User Manual

ONVIF

After selecting Enable ONVIF, the device will be discoverable by ONVIF VMS during the search process.

Default user name: admin;

Password: tm1234.

Firewall

This function is utilized to enhance your network security. You can customise the firewall's automatic defence rules according to your requirements, as follows.

Status	>	Firewall Rules						
Sip Setting	>	#	Name	Type	IP/MAC	Action		
Basic Setting	>	1					<input checked="" type="checkbox"/>	
Network Setting	>	2					<input checked="" type="checkbox"/>	
TCP/IP	>	3					<input checked="" type="checkbox"/>	
ONVIF	>	4					<input checked="" type="checkbox"/>	
Firewall	>	5					<input checked="" type="checkbox"/>	
Advance Setting	>	Automatic Defense Rules						
System	>	#	Name	Protocol	Port Range	Rate		
		1				0	<input checked="" type="checkbox"/>	
		2				0	<input checked="" type="checkbox"/>	
		3				0	<input checked="" type="checkbox"/>	
		4				0	<input checked="" type="checkbox"/>	
		5				0	<input checked="" type="checkbox"/>	

Advance Setting

Input

Input: Key; I/O In; SIP 1; SIP 2.

Status	>	Input Settings	
Sip Setting	>	Input	Key
Basic Setting	>	File Enable	<input type="checkbox"/>
Network Setting	>	Sip Enable	<input type="checkbox"/>
Advance Setting	>	Url Enable	<input type="checkbox"/>
		Output Enable	<input type="checkbox"/>
		Relay Enable	<input type="checkbox"/>
		Save	

Status	>	Input Settings	
Sip Setting	>	Input	I/O In
Basic Setting	>	File Enable	<input type="checkbox"/>
Network Setting	>	Sip Enable	<input type="checkbox"/>
Advance Setting	>	Url Enable	<input type="checkbox"/>
		Output Enable	<input type="checkbox"/>
		Relay Enable	<input type="checkbox"/>
		Save	

RTP Multicast

Each device can receive up to 10 RTP addresses. Please note that when setting the same RTP addresses, port numbers should not use continuous numbers. Use discontinuous numbers e.g.:

239.255.1.2:8000, 239.255.0.1:8001, 239.255.0.1:8002 (×)

239.255.0.1:8000, 239.255.0.1:8002, 239.255.0.1:8004 (√)

- **Multicast address range:** 224.0.0.0-239.255.255.
- **Ports range:** 1024-65536
- Use IP Tool, Audio manager and PA System to make RTP multicast.

Priority	IP Address (e.g. 239.255.0.1:5004)
1	<input type="text"/>
2	<input type="text"/>
3	<input type="text"/>
4	<input type="text"/>
5	<input type="text"/>
6	<input type="text"/>
7	<input type="text"/>
8	<input type="text"/>
9	<input type="text"/>
10	<input type="text"/>

Schedule

This function is widely use in school, factory and office projects. Making a regular bell, announcement and alarm. Enable the schedule, you can name the schedule, then setting it step by step.

Status >

Sip Setting >

Basic Setting >

Network Setting >

Advance Setting ▾

Input

RTP Multicast

Schedule

Http URL

System >

Schedule

#	Name	Time	Action	File		
1					<input checked="" type="checkbox"/>	
2					<input checked="" type="checkbox"/>	
3					<input checked="" type="checkbox"/>	
4					<input checked="" type="checkbox"/>	
5					<input checked="" type="checkbox"/>	
6					<input checked="" type="checkbox"/>	
7					<input checked="" type="checkbox"/>	
8					<input checked="" type="checkbox"/>	
9					<input checked="" type="checkbox"/>	
10					<input checked="" type="checkbox"/>	

Http URL

User can control the alarm by HTTP URL:

1. Enable the selection;
2. Open any browser you have in computer;
3. Put the URL as the following examples, enter it.

Status	>	Http URL	
Sip Setting	>	Play File Enable	<input checked="" type="checkbox"/>
Basic Setting	>	Example1:	http://192.168.5.233/api/play?action=start&file=userfile1&mode=loop
Network Setting	>	Example2:	http://192.168.5.233/api/play?action=start&file=userfile1&mode=once&volume=10
Advance Setting	▼	Example3:	http://192.168.5.233/api/play?action=start&file=userfile1&mode=multple&count=10&volume=20
Input		Example4:	http://192.168.5.233/api/play?action=start&file=userfile1&mode=duration&count=10&volume=30
RTP Multicast		Example5:	http://192.168.5.233/api/play?action=stop
Schedule		Example6:	http://192.168.5.233/api/playringtone?action=start&value=440/2000,0/4000&duration=10&volume=100
Http URL		Example7:	http://192.168.5.233/api/playringtone?action=stop
System	>	Sip Call Enable	<input checked="" type="checkbox"/>
		Example1:	http://192.168.5.233/api/sipcall?action=call&number=100&line=auto
		Example2:	http://192.168.5.233/api/sipcall?action=call&number=100&line=1
		Example3:	http://192.168.5.233/api/sipcall?action=hangup
		Output Enable	<input checked="" type="checkbox"/>
		Example1:	http://192.168.5.233/api/output?action=on
		Example2:	http://192.168.5.233/api/output?action=on&duration=10
		Example3:	http://192.168.5.233/api/output?action=off
		Relay Enable	<input checked="" type="checkbox"/>
		Example1:	http://192.168.5.233/api/relay?action=on
		Example2:	http://192.168.5.233/api/relay?action=on&duration=10
		Example3:	http://192.168.5.233/api/relay?action=off

System

Date/Time

There are two update modes for time: NTP/local time. Please select one and configure the time zones accordingly. NTP sever and interval can choose default setting, then save the configuration.

Status >
Sip Setting >
Basic Setting >
Network Setting >
Advance Setting >
System ▾
Date/Time
Security
Upgrade

Date/Time

Device Time2024-03-04 10:23:18

Update ModeNTP ▾

TimeZoneGMT+08:00 ▾

NTP Serverpool.ntp.org ▾

NTP Interval10 Minutes

Save

Security

Set a new user name and password as needed, save the configuration, and then restart the login process.

Status >
Sip Setting >
Basic Setting >
Network Setting >
Advance Setting >
System ▾
Date/Time
Security
Upgrade

Security

User Name

Password

New User Name

New Password

Confirm Password

Save

Upgrade

When you reboot or reset the system, it will revert to its original settings, and you will need to log in to the web page again.

How to upgrade SIP-D26V firmware version in web interface?

1. Select the latest version firmware
2. Click upgrade to refresh, it would require about 20s.
3. Re-login the web interface, latest version has upgraded.

- Status >
- Sip Setting >
- Basic Setting >
- Network Setting >
- Advance Setting >
- System >

Date/Time

Security

Upgrade

Upgrade

Reboot

Reboot Device Now

Reset

Reset to Factory Setting

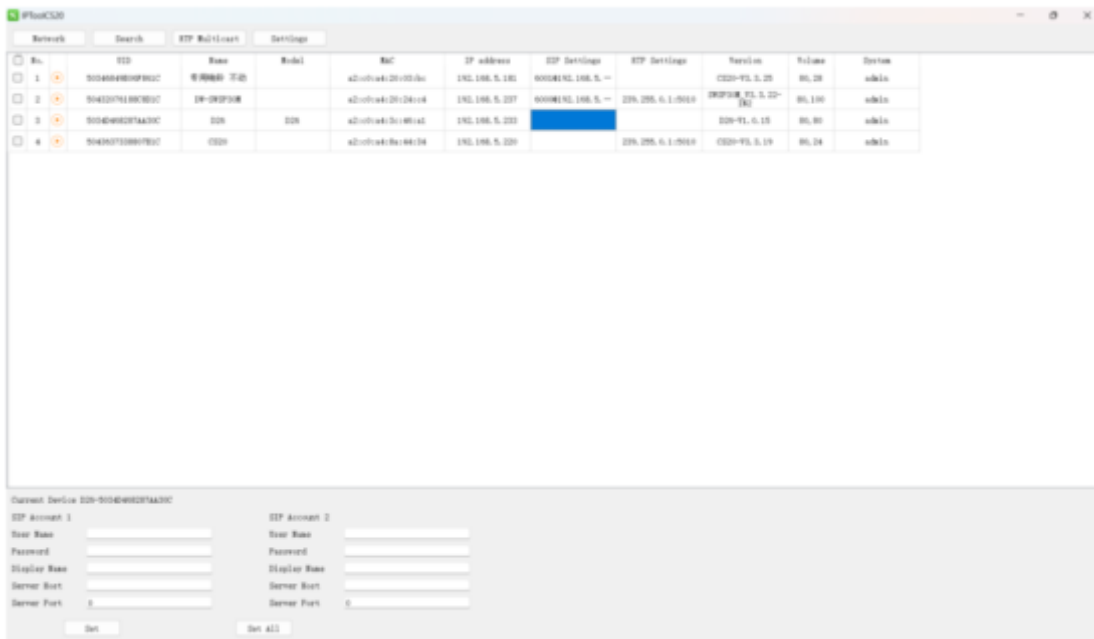
Upgrade

选择文件 未选择文件

IPTool Configuration

In addition to Web configuration, IPTool provides another option for quickly configuring basic information such as SIP account settings, volume settings, RTP Multicast Settings, and upgrades. Below are the steps to follow:


1. Download IPTool in <https://www.tonmind.com/category/downloads/5>.
2. Enter IPTool, scan local network, the device will appear and then start setting.



www.tonmind.com

TONMIND

Documents / Resources

	<p>TONMIND SIP-D26V Smart IP Video Intercom [pdf] User Manual</p> <p>SIP-D26V, SIP-D26V Smart IP Video Intercom, SIP-D26V, Smart IP Video Intercom, IP Video Intercom, Video Intercom, Intercom</p>
--	--

References

- [T PA System,IP Speaker,SIP Paging Adapter | Tonmind](#)
- [T www.tonmind.com](#)
- [T www.tonmind.com](#)
- [User Manual](#)

Manuals+. [Privacy Policy](#)

This website is an independent publication and is neither affiliated with nor endorsed by any of the trademark owners. The "Bluetooth®" word mark and logos are registered trademarks owned by Bluetooth SIG, Inc. The "Wi-Fi®" word mark and logos are registered trademarks owned by the Wi-Fi Alliance. Any use of these marks on this website does not imply any affiliation with or endorsement.