

TONMIND PA System Pro 2.0 Software User Manual

Contents

- [1 TONMIND PA System Pro 2.0 Software](#)
- [2 Product Specifications](#)
- [3 Product Information](#)
- [4 Frequently Asked Questions \(FAQ\)](#)
- [5 Overview](#)
- [6 Server Setting](#)
- [7 Client setting](#)
- [8 How to Create a Session](#)
- [9 How to Add New Users/Clients](#)
- [10 Documents / Resources](#)
 - [10.1 References](#)
- [11 Related Posts](#)



TONMIND PA System Pro 2.0 Software

Product Specifications

- **Product Name:** PA System Pro 2.0
- **Manufacturer:** Xiamen Tonmind Technologies Co., Ltd.
- **Version:** V2.1.0
- **Website:** <https://www.tonmind.com>

Product Information

The PA System Pro 2.0 is a professional audio system designed for broadcasting, SIP calling, meetings, and zone creation. It supports various audio sources such as speakers, microphones, live radio, RTP multicast, and text-to-speech (TTS) capabilities in multiple languages.

Product Usage Instructions

Server Setting

Start the Pro server to access the settings page.

- **General:** Configure language, startup options, port settings, and HTTP API.
- **System:** Check IP address, SIP server information, audio/video codecs, and RTP ports.
- **About:** View system version, machine code, and contact details.

Getting a License Key

Navigate to the 'About' section. 2. Copy the machine code and send it via email to sales@tonmind.com or contact Tonmind sales directly. 3. Receive the license key and activate it for the license to work.

Client Setting

Use the default client account to log in. Name: admin Password: admin

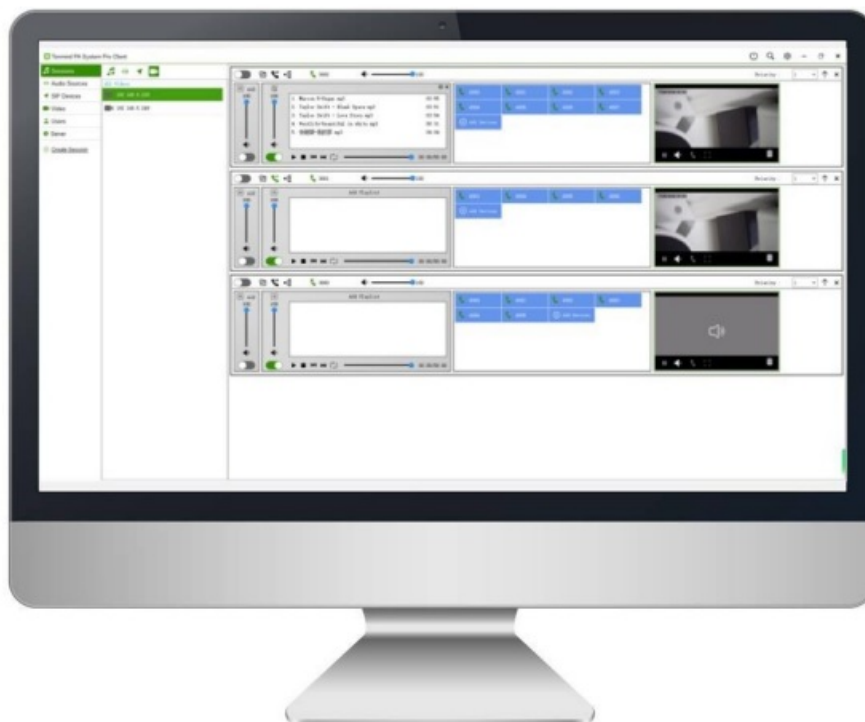
Frequently Asked Questions (FAQ)

How many SIP devices can be added to a session?

A maximum of 1000 SIP devices can be added to a session.

Overview

Tonmind PA System Pro 2.0 is an audio broadcast software with built-in SIP server. It has both server & client ends, thus supports multi-user management. The system enables a maximum of 1000 zones, and each zone is flexible to arrange Tonmind IP speakers, IP door phones, and any SIP devices for group paging. It creatively incorporates ONVIF CCTV, combining it with ONVIF speakers, making it perfect for security projects and various application scenarios. In sessions, it can achieve meeting function for each connected SIP extension, providing an all-in-one unified IP audio solution. The system supports SIP extension broadcasting, allowing playback of various audio sources, including SIP calls, live radio, local media players, universal windows media players (for example, Spotify, iTunes, VLC, etc.), also supports TTS (text-to-speech) for text messages. The system is ideal for use in School PA Systems, Commercial PA Systems, Transportation PA Systems, Hotel PA Systems, Health Care PA Systems, and more.



Main functions:

- Efficient manageable audio system.
- Video monitoring and management in zones.
- Priority broadcasting in each zone.
- Support group meeting.
- Support RTP Multicast, TTS, live radio, playlist.

- Support a maximum of 1000 SIP extensions.
- Support built-in bell ringing.
- Multi zones management.
- Multi kinds of audio streams.
- Flexible schedule configuration.
- Compatible with all windows music players.
- Provide all-in-one unified IP audio solutions.
- Manage and control various PA System excellently.

Sever Setting

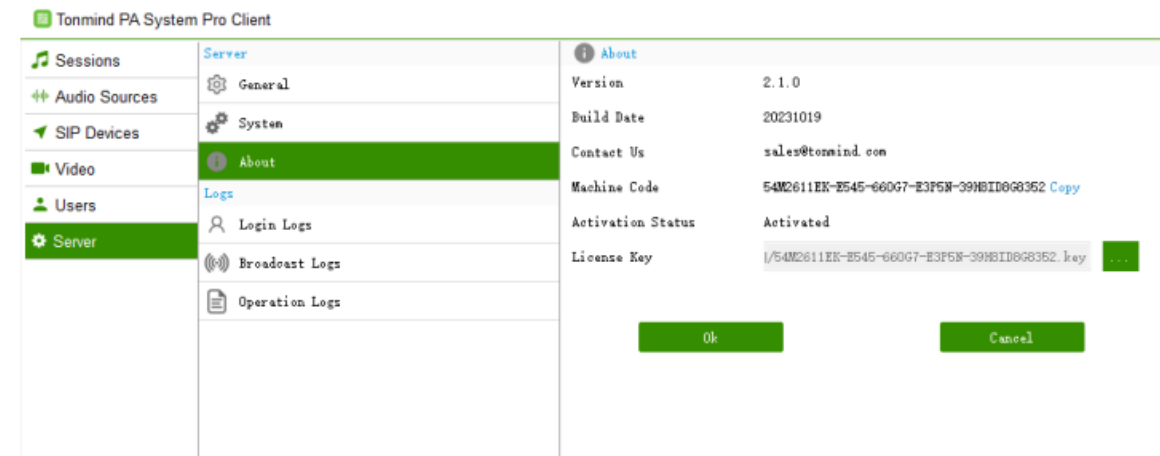
After click to start Pro server, then go into the page as below.

- **General:** Language, run at start up, port option and also HTTP API setting.
- **System:** Check the IP address, SIP sever info, audio/video codec and RTP port.
- **About:** Check system version, machine code and contact information.

Tab	Setting	Value	Action
System	Local IP	192.168.5.213	Select
	Local Netmask	255.255.255.0	
	SIP Server Port	5060	
	SIP Trunk Port	5080	
	NAT IP	<input type="checkbox"/> 192.168.5.213	
	Audio Codec Settings		
	OPUS	<input checked="" type="checkbox"/>	
	G722	<input checked="" type="checkbox"/>	
	PCMU	<input checked="" type="checkbox"/>	
	PCMA	<input checked="" type="checkbox"/>	
System	Video Codec Settings		
	VP8	<input checked="" type="checkbox"/>	
	H264	<input checked="" type="checkbox"/>	
System	RTP port	16384 - 32768	
	Save		

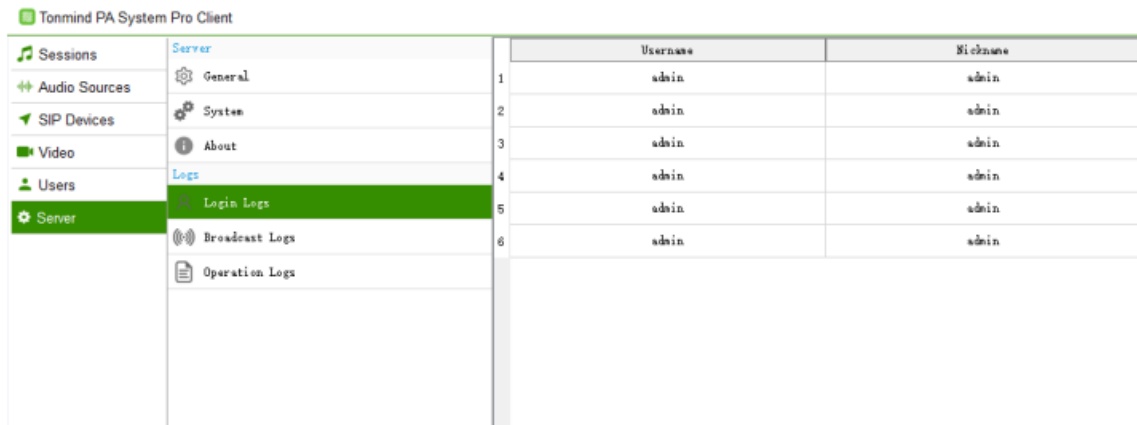
How to Get a License Key

- Enter option- "about".
- Copy the machine code to us by e-mail: sales@tonmind.com or contact Tonmind sales directly.
- We'll send a license key to you after receiving the machine code. Active it, and the license will work.



How to Check the System Log

We can check login, broadcasting and operating log in this part.

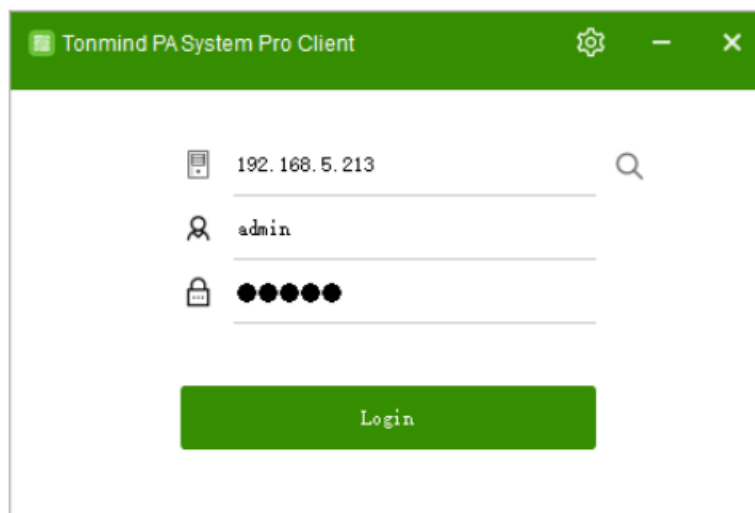


Client setting

Login Admin Account

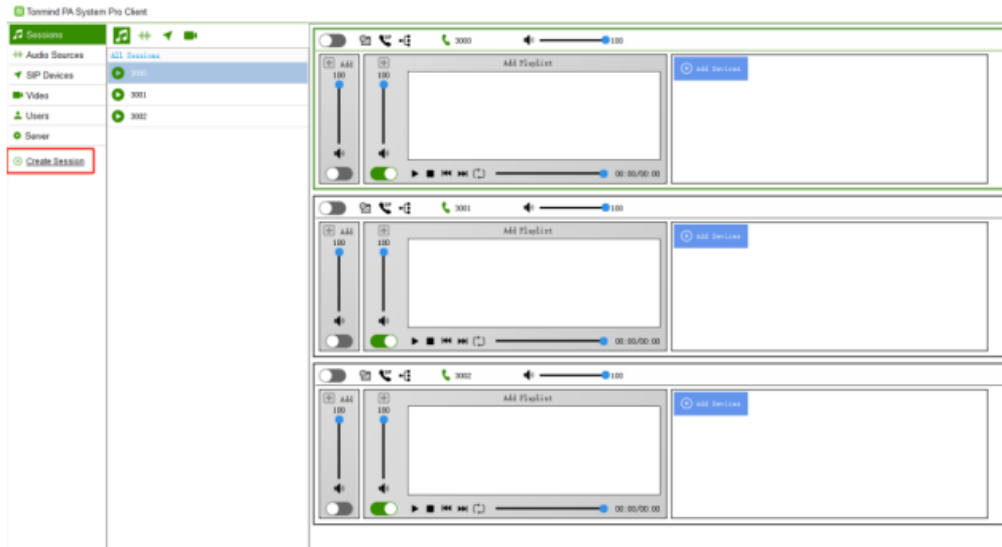
After start Pro server, there will come out a default client account, login with the info.

- **Name:** admin
- **Password:** admin



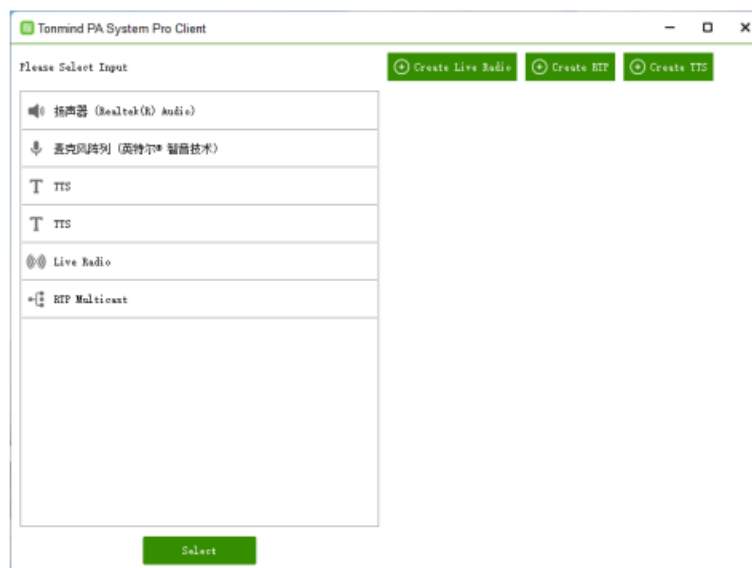
How to Create a Session

When customers want to create a zone or group for broadcasting, SIP calling or meetings, they can create a session, and new zones will be created as below. In these zones, we can add a maximum of 1000 SIP devices, 16 CCTV videos streams, and different audio sources such as real-time speaker/microphone, live radio, RTP and TTS. The session can also connect to other SIP sever, supporting output by RTP and HTTP. During the session, a meeting can be created for all SIP devices connected.

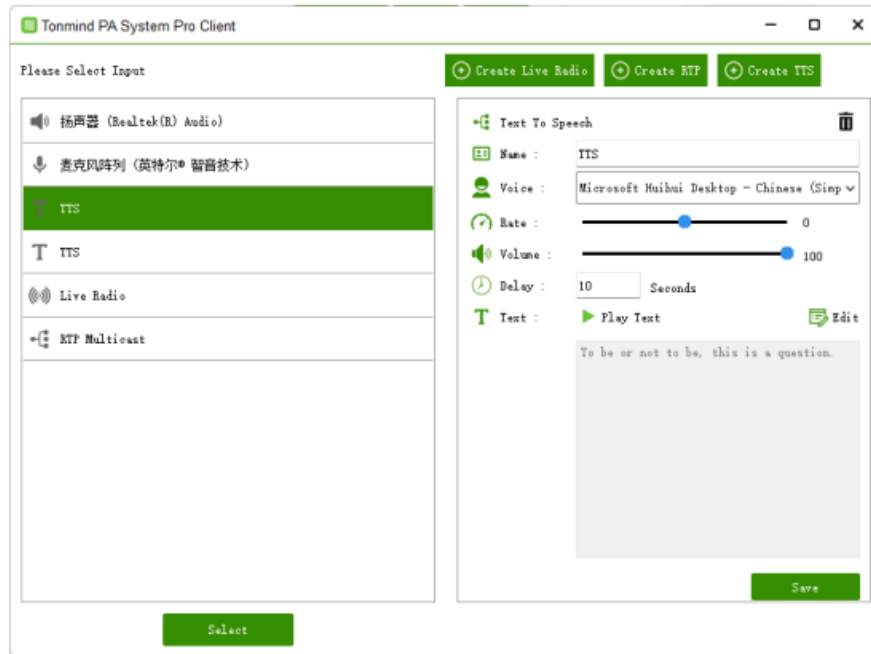


How to Add Audio Source and Playlist

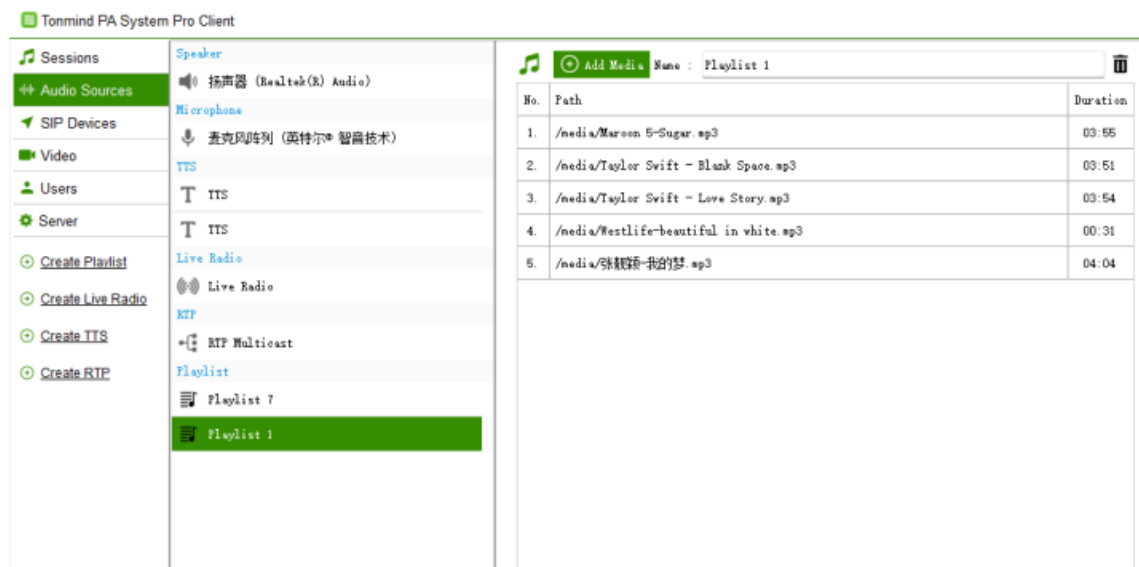
- **Speaker:** It can play universal windows media player (for example, Spotify, iTunes, VLC, etc.).
- **Microphone:** It's a live microphone which you can speak and make announcement directly on the PC.
- **Live radio:** Search and copy the live radio URL from the Internet.
- **RTP multicast:** Use a same RTP address here and different IP speakers to page.



- **TTS:** Input a text message and save it; it can be turn into an audio file played on the section. Currently, we offer a choice of two languages: Chinese and English. Set the voice rate and volume for broadcasting. The delay time determines how long it will be played after the session.

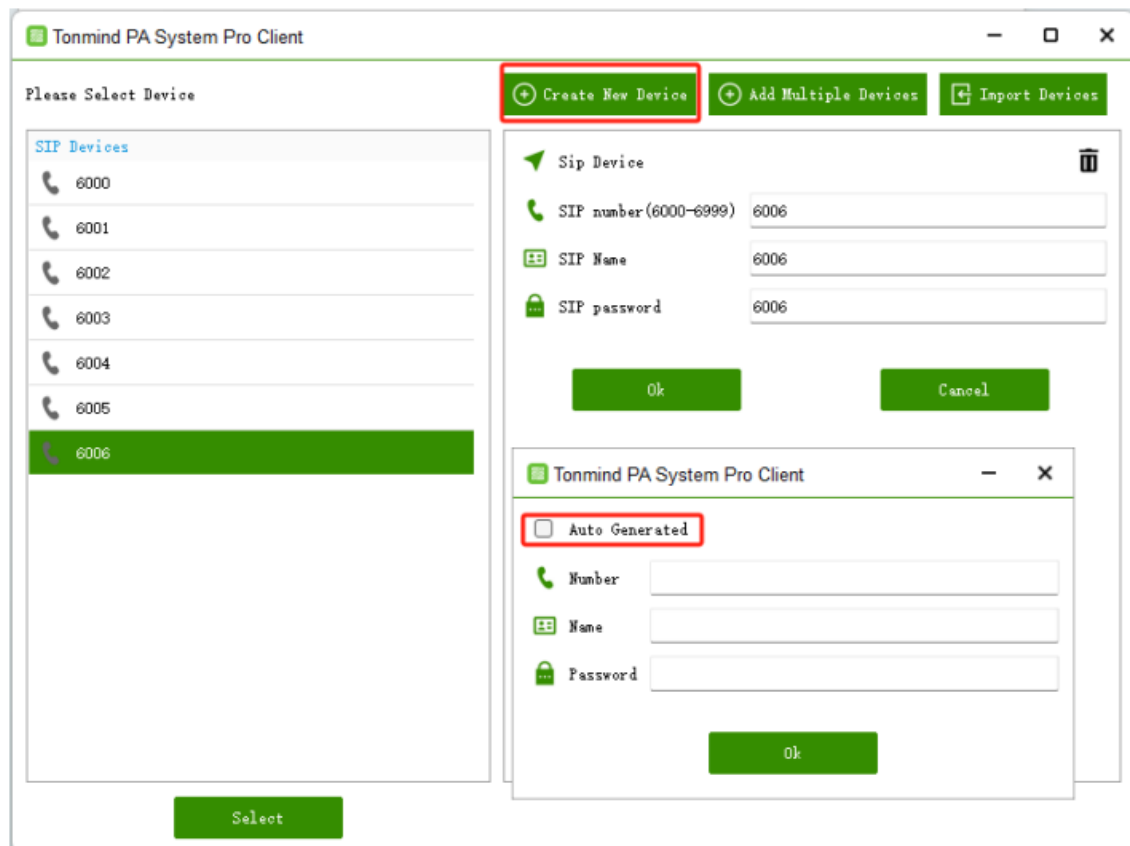


- **Playlist** Create a playlist: Click to add media, then we can upload mp3 files like music or any audio files from local PC.



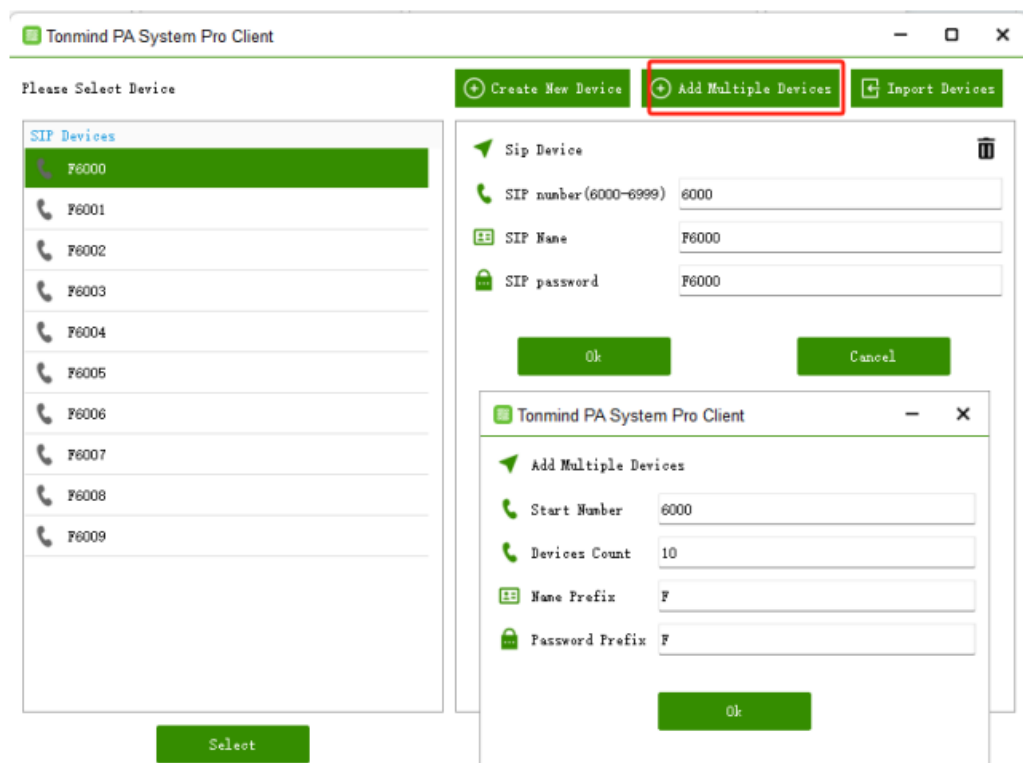
How to Add SIP Devices in Session

1. Click to "Add device", there will comes to the following page.
2. When create new device and choose auto created, that will have a default account immediately, you can keep this step and create new SIP account one by one.



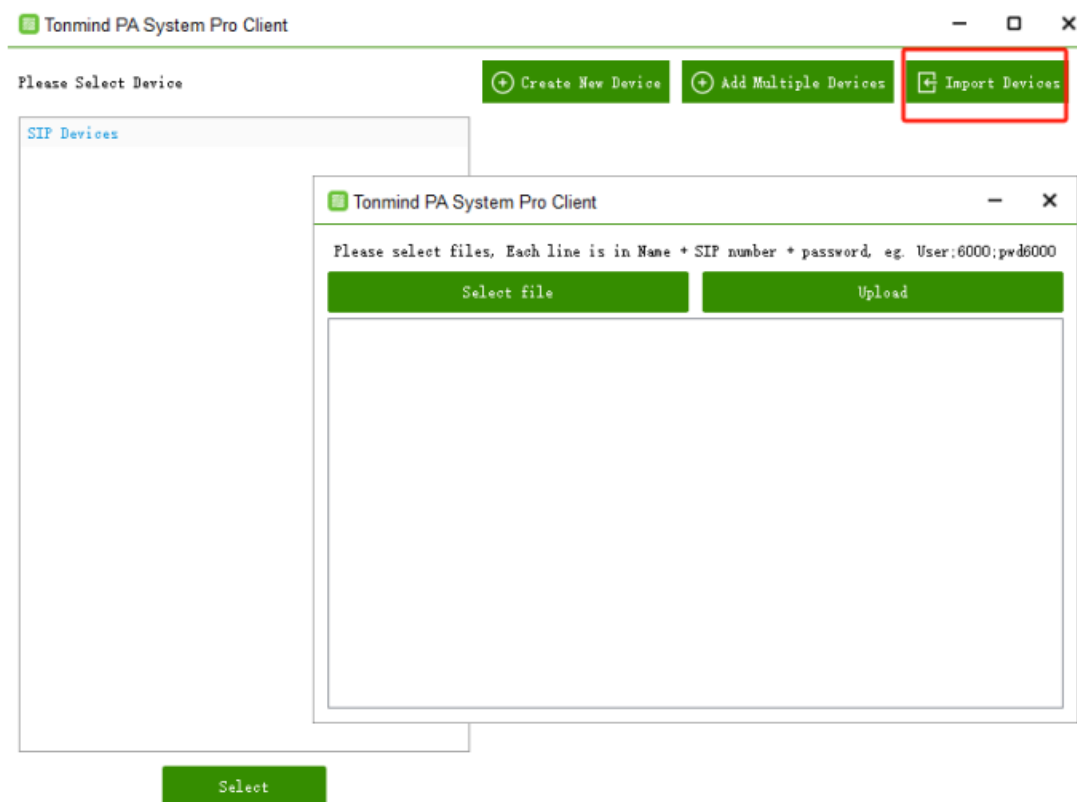
3. When you want to add more SIP accounts at one time, choose add multiple devices.

- **Start number:** e.g.: 6000, the first devices will be 6000 and later: 6001, 6002...
- **Device count:** The number you put will be how many accounts you want to add,
- **Name prefix:** Put any prefix to define each device;
- **Password prefix:** Each password will start with this prefix.



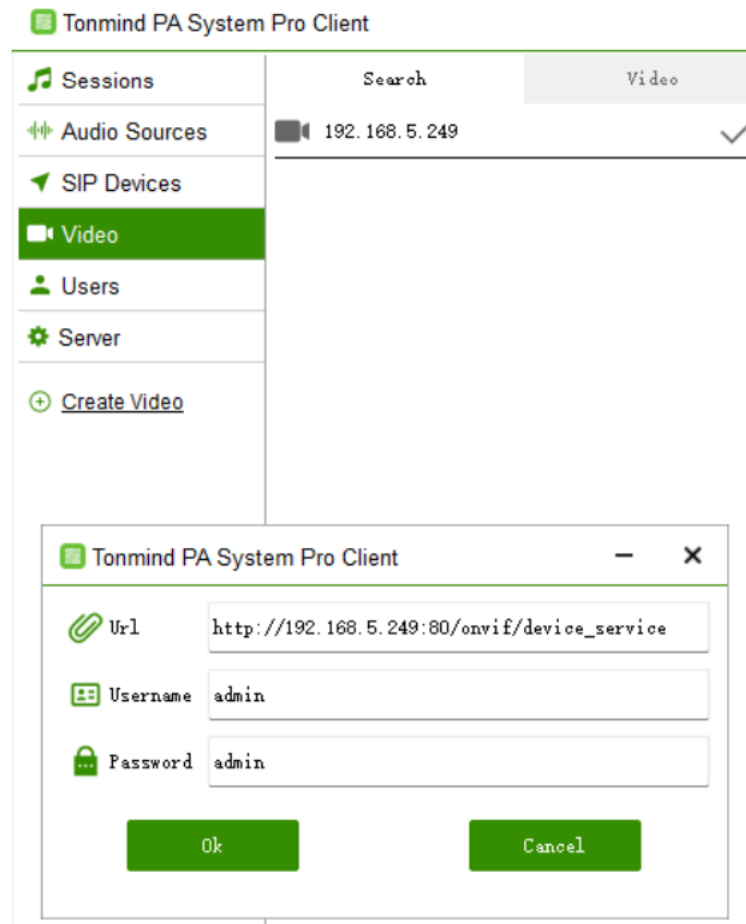
4. **Import device:** Use a document to add bulk accounts. Please select files; each line should be in this form:

Name + SIP number+ password, e.g., User:6000:pwd6000.

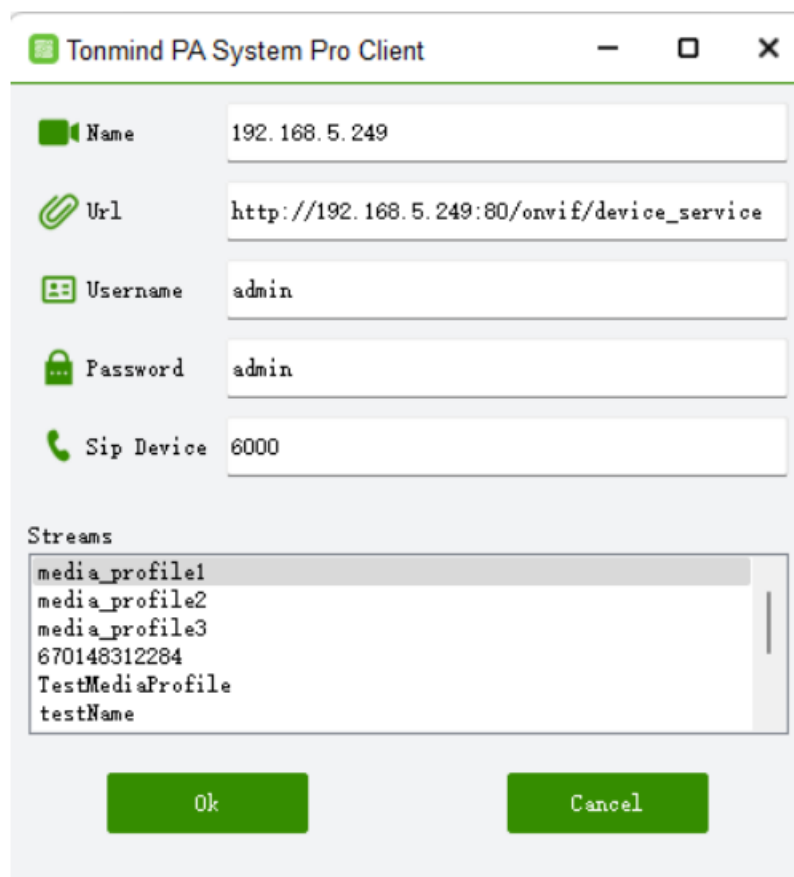


How to Add Videos in Session

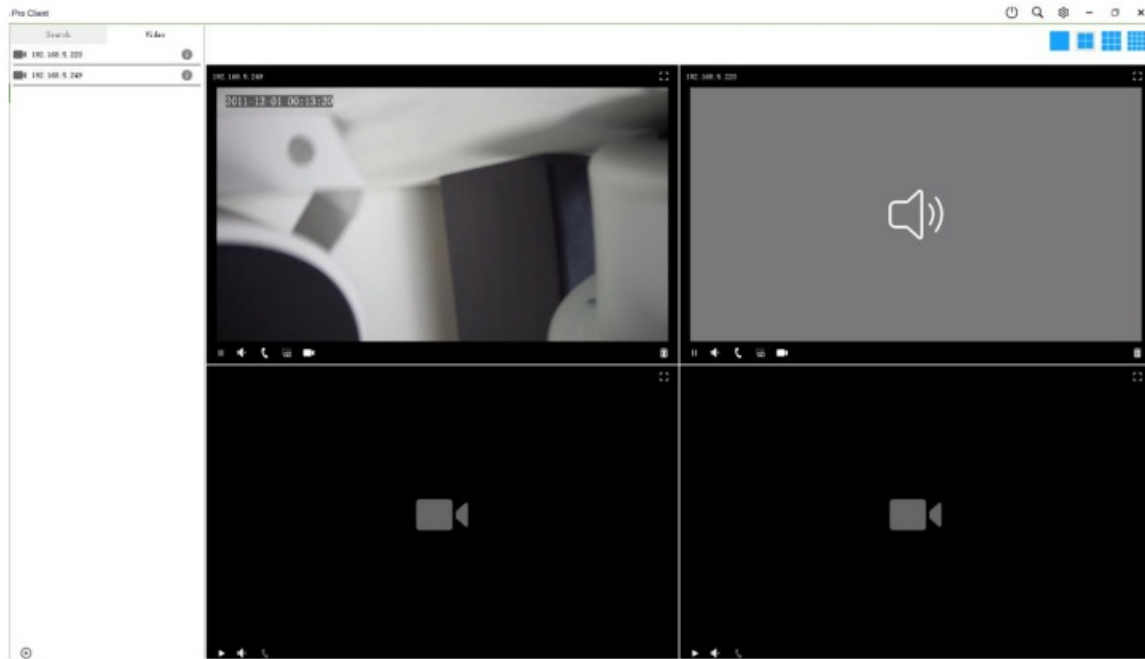
1. Enter video section, use search function, then we'll find videos and ONVIF speaker in the list;
2. Connect a Onvif IP camera by its username and password;



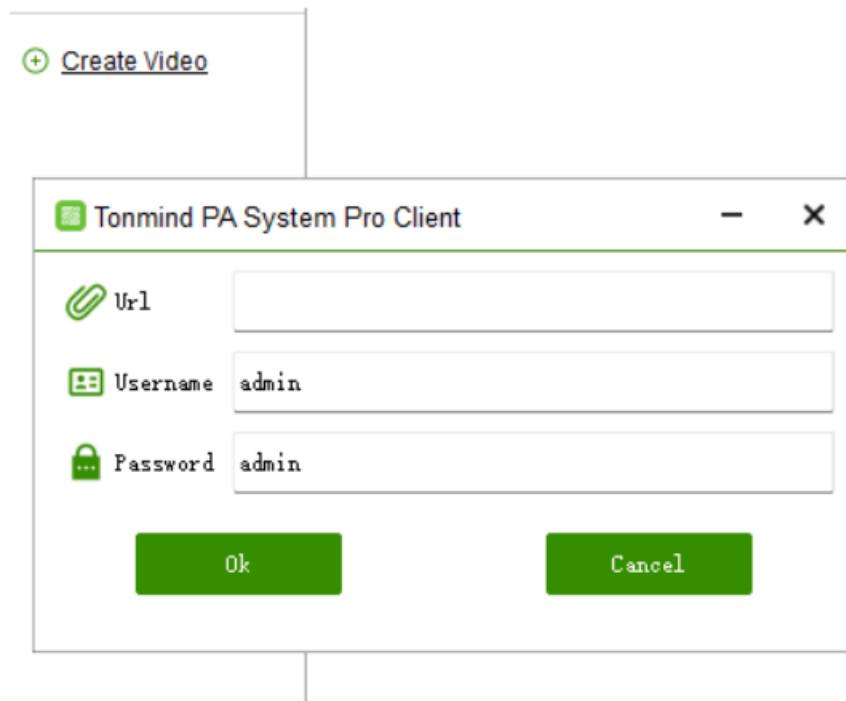
3. SIP device in the picture below means that we can put the SIP number of a connected IP speaker on it. Then users can call directly through the video;
4. Select any one of the streams and save ok key, then the video has been well connected; in the same way, we can add ONVIF speaker as well;



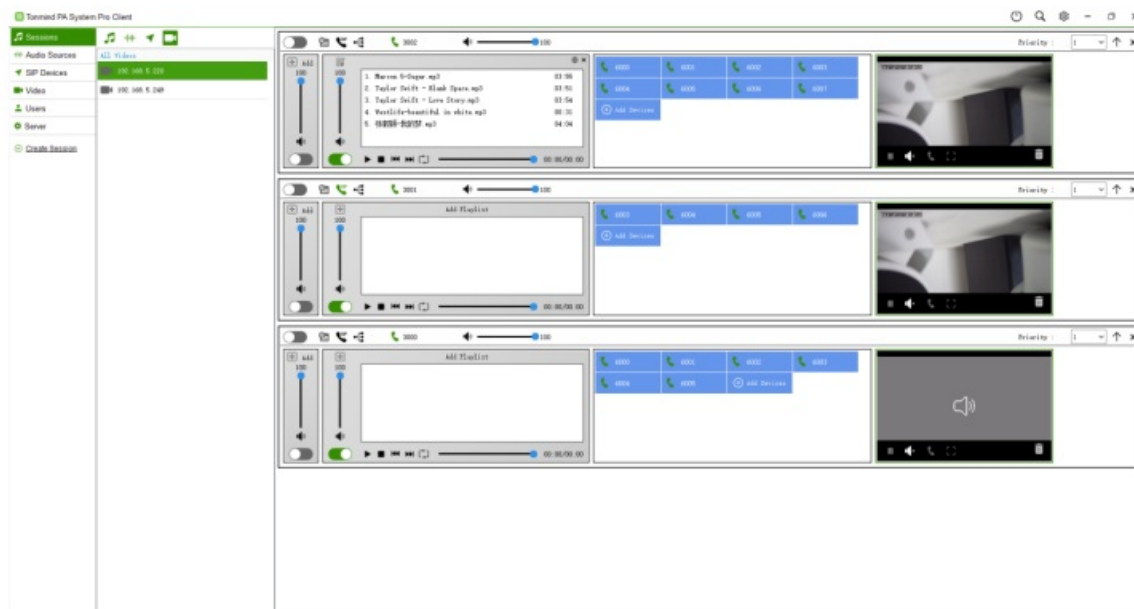
5. Pull the connected audio and video to the black area on the right size, then we can monitor the video and speaker as below.




6. We can also create the video by put its URL, find this URL from VMS manager or each CCTV'S default IP address.

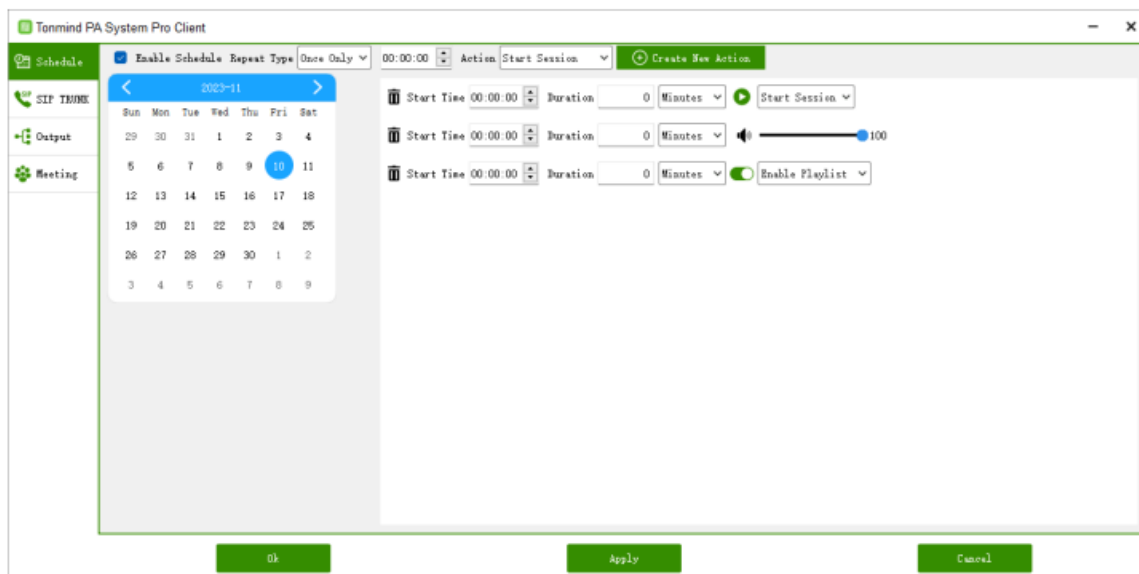


7. Turn back to session and add videos on the right side in the group, we can monitor the videos and IP speakers together.



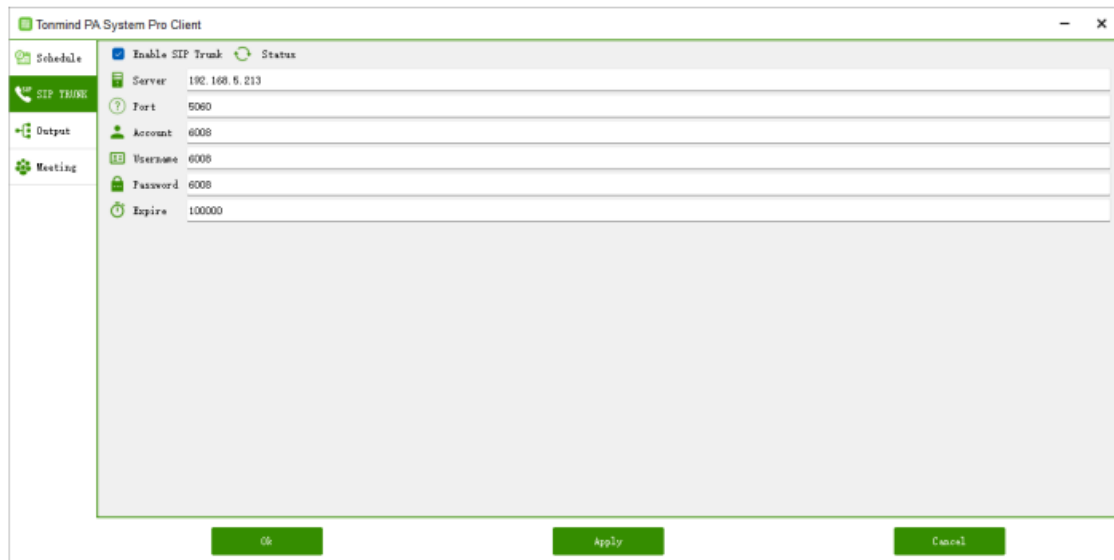
How to Set a Schedule

1. Find this logo  in session, enable section, we can choose repeat type, start time and action.
2. Start/stop session: It's able to turn on/off all the setting in the session.
3. Enable/disable playlist: It's able to turn on/off the playlist in the session.
4. Set volume: Adjust the volume in a certain time, like in midnight, the music can set to zero.



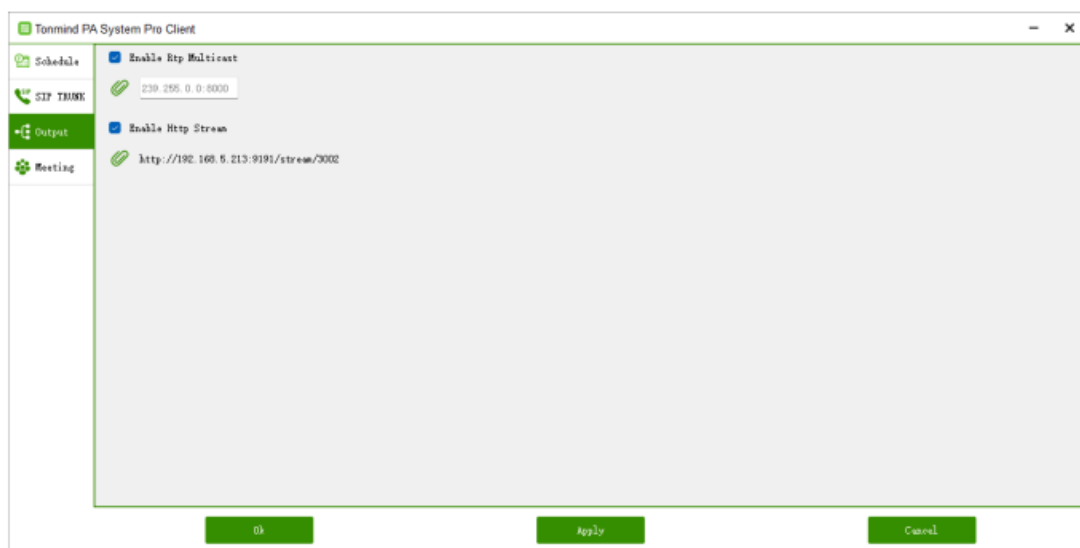
How the Session Register to SIP Server

1. Enable the SIP trunk, input effective SIP infos;
2. The SIP sever can be any other PBX, or pa pro built-in IP sever, below example is the system built-in sever.



How to Create an Output and Meeting

1. Enable RTP multicast: Enter a same RTP address here, then we can use other RTP tools like IP tool or audio managers, to broadcast the session.
2. Enable http stream: We can use another URL to manage the broadcast of this session.
3. Enable meeting: All SIP devices in this session can have a meeting, everyone can communicate with each other.

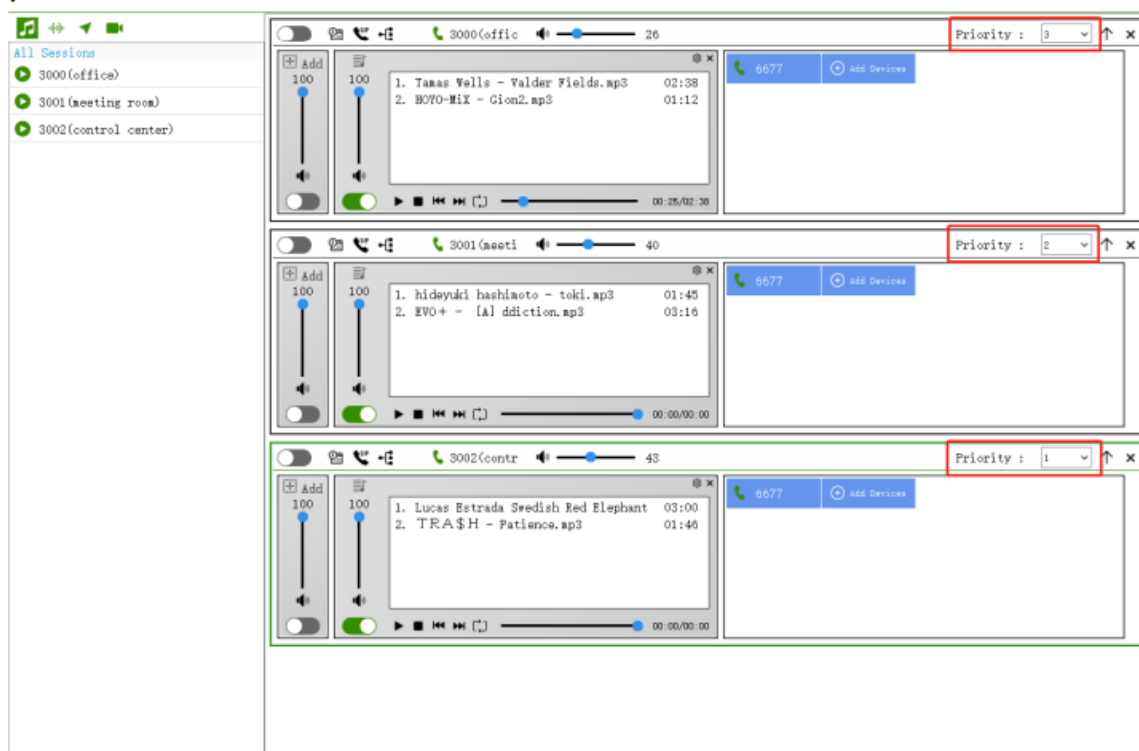


Priority in Sessions

It is used to define the zone paging's priority. There are 1-9 ranks for zones, the higher the number, the higher the rank.

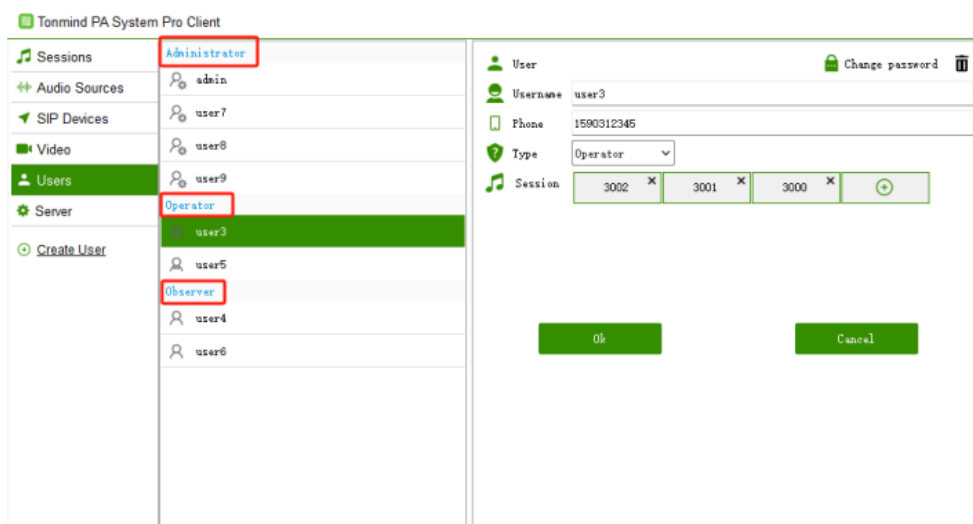
How can we understand this function? For example:

1. We have configured 3 zones: office (3000), meeting room (3001), and control center (3002). We then assigned priority ranks to each zone ranging from 1 to 3.
2. When all three zones are registered and have added the same SIP device account (6677) while playing music simultaneously, the SIP device (6677) will prioritize playing the music from the office (3000) due to its highest priority number (3).




How to Add New Users/Clients

- **Administrator:** The admin account is the top manager and cannot be edited or changed. It has the authority to manage all accounts below. A regular administrator can manage accounts of other operators and observers.
- **Operator:** It can only manager its own account's content.
- **Observer:** It can only check their account information but has no right to change any details. We can change the password once a new account is created; the default password: 1234.



Documents / Resources

	TONMIND PA System Pro 2.0 Software [pdf] User Manual PA System Pro 2.0 Software, Software
--	--

References

- [T PA System,IP Speaker,SIP Paging Adapter | Tonmind](#)
- [User Manual](#)

[Manuals+](#), [Privacy Policy](#)

This website is an independent publication and is neither affiliated with nor endorsed by any of the trademark owners. The "Bluetooth®" word mark and logos are registered trademarks owned by Bluetooth SIG, Inc. The "Wi-Fi®" word mark and logos are registered trademarks owned by the Wi-Fi Alliance. Any use of these marks on this website does not imply any affiliation with or endorsement.