



TONMiND PA System Lite Software User Manual

[Home](#) » [TONMiND](#) » TONMiND PA System Lite Software User Manual 

TONMiND PA System Lite Software User Manual



Contents

- [1 Overview](#)
- [2 System Options Setting](#)
- [3 Connect PA System Lite Dispatch Console](#)
- [4 Setup IP Audio Devices](#)
- [5 Setup Paging Zones](#)
- [6 Zones Control](#)
- [7 support](#)
- [8 Documents / Resources](#)
 - [8.1 References](#)
- [9 Related Posts](#)

Overview

About Tonmind PA System

Tonmind PA System Lite is one of Tonmind software solution, it has IP public address system, SIP voice, RTP multicasting modules integrated, it provides an all-in one unified IP audio solution. The IP Audio Center provides centralized IP audio endpoints management, public address, background music, intercom, emergency broadcasting, audio conferencing, IP phone call and more features. It is suitable for public safety, secure community, industry, transportation, school, health, Production Studios, Commercial & industrial Buildings and more application scenarios.

The main functions

The main functions of Tonmind PA System Lite is as below, Tonmind is keeping to update system as customer requirement and adopt new technology. Divide regions into zones per needs. Support SIP extension broadcast in different zones and each endpoint. The internal extension can make SIP calls. Initiate calls using SIP phones. Support LAN RTP multicast broadcast.

IP Audio Endpoints

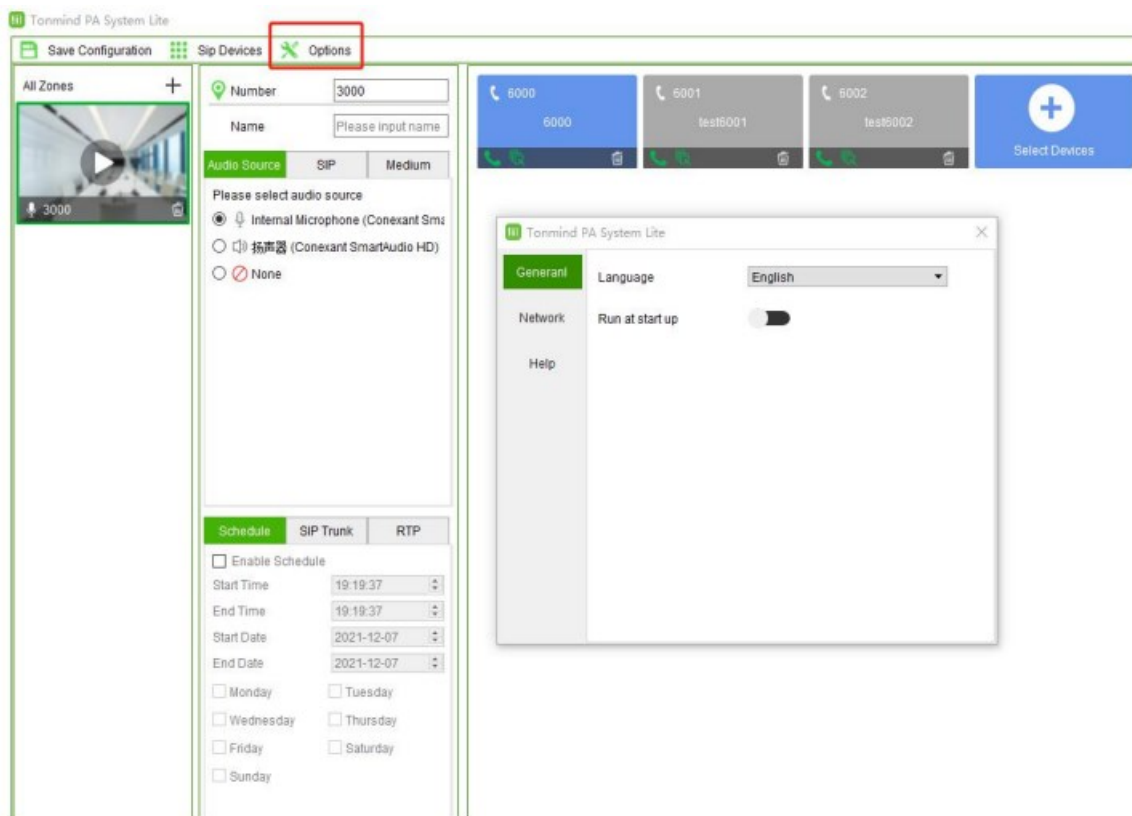
The following IP audio endpoints can be integrated into Tonmind PA System Lite:

1. Tonmind series IP SIP speakers and others
2. IP phones and soft phones

System Options Setting

After click to start the system, then go into the page as below, click the option for setting.

- General Language and run at start up
- Network Check the IP address and SIP port
- Help Check system version and contact information



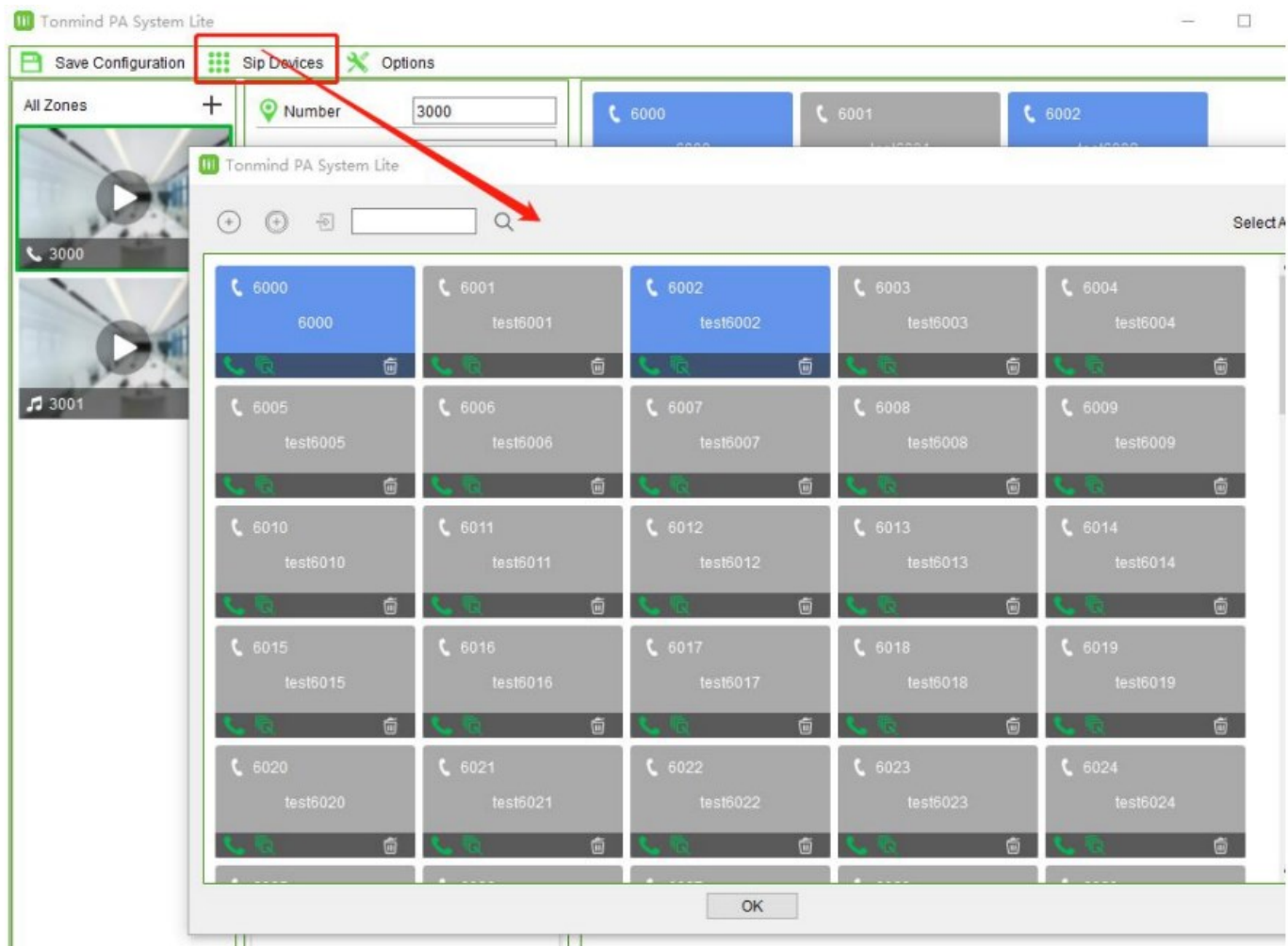
Connect PA System Lite Dispatch Console

For using Tonmind PA System Lite to control and the device like speakers and IPphone, the following settings need to be done.

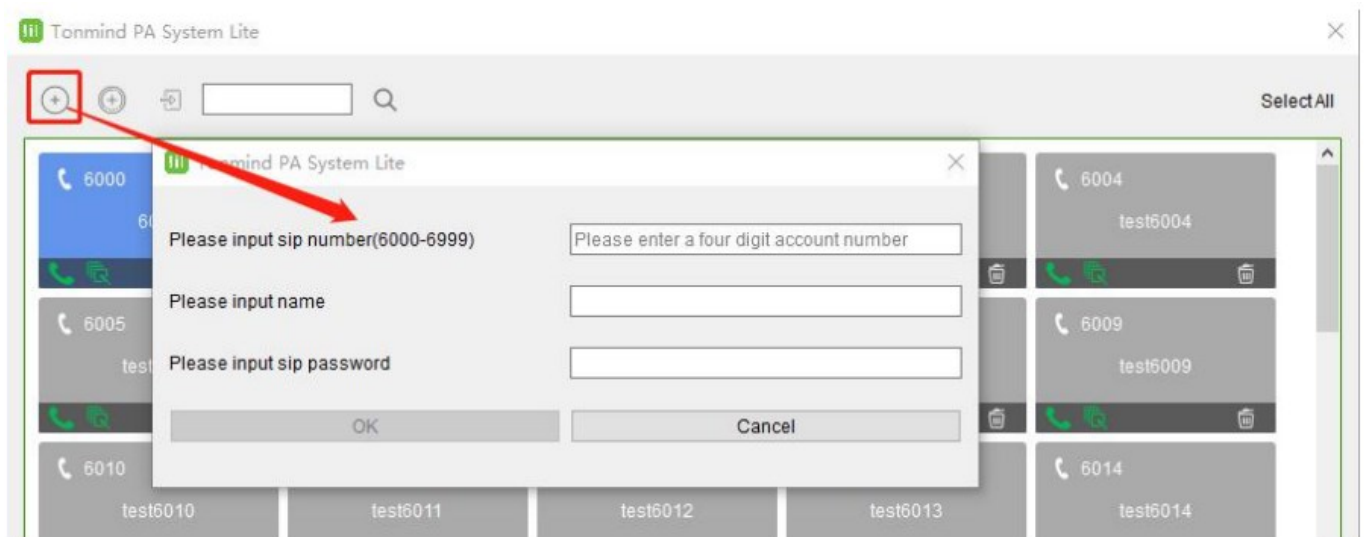
Create SIP Accounts

All IP audio endpoints to be connected to Tonmind PA System Lite support SIPprotocol, and each of them needs to be configured with a SIP account.

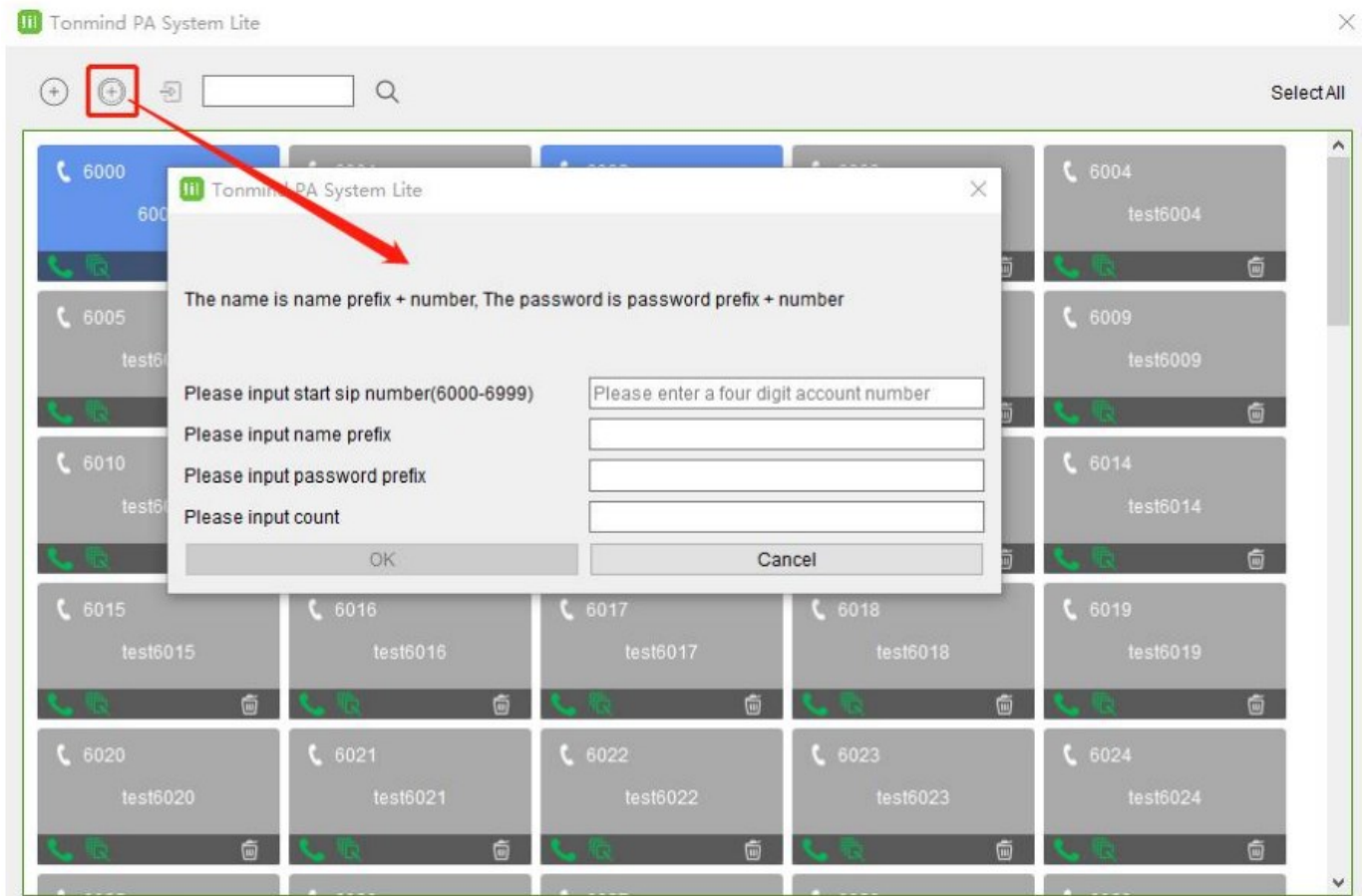
Please click Sip device -> go to setting screen, here on this page you can create oneSIPaccount at a time or you can bulk create SIP accounts.



To create a single SIP account, please click on the button., then Click OKto savethe speciaficaton.



- SIP Number: The SIP account number to be used by an IP audio device, for SIPregister and calling.
- Name: Creat a name for the device as need.
- Password: The password to be used for SIP register. To Create bulk SIP numbers, please click on button, button., then Click OKto savethe speciaficaton.



- Start SIP Number: The Start SIP account number to be used by an IP audio device, for SIP register and calling.
- Name: Creat a name for the device as need.
- Password: The password to be used for SIP register. •Count: How many device SIP number you want to creat, for example if the start sipnumber is 6000 and the count is 5, then here will creat five sip number to be 6000, 6001, 6002, 6003 and 6004.

Setup IP Audio Devices

There are 2 steps to register an IP Audio device to the Tonmind PA SystemLite. Herewetake SIP-S01 Network Speaker as an example.

First use our IP Tool to set up the SIP setting for speaker SIP-S01,by using our IPtool tosearch the device and then click sip setting. There each device could set twoSIPnumber.

IPToolCS20

Network Search RTP Multicast Settings

No.	UID	Name	MAC	IP address	Netmask	Gateway	SIP Settings	RTP Set
1	E4607CD01B172434	Floor 2	a2:c0:a4:13:09:fc	192.168.5.73	255.255.255.0	192.168.5.1	6000@192.168.5.164	239.255.0.

Current Device Floor 2-E4607CD01B172434

SIP Account 1

User Name: 6000

Password: 1234

Display Name: 6000

Server Host: 192.168.5.164

Server Port: 5060

Set

SIP Account 2

User Name: 6011

Password: test6011

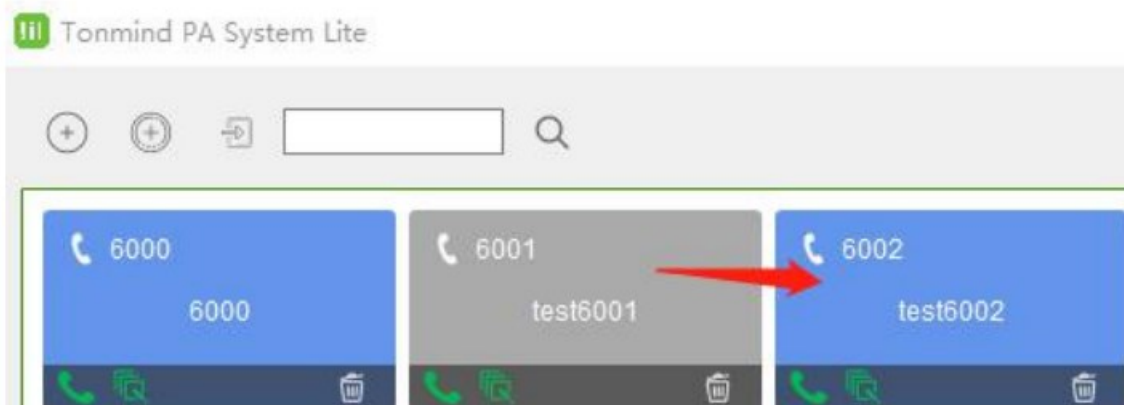
Display Name: 6011

Server Host: 192.168.5.30

Server Port: 15060

Set All

- User Name: Sip number register and calling.
- Password: The password to be used for SIP register.
- Name: Creat a name for the device as need. Server Host: Server IP Server Port: Default to be 5060. When each IP Audio device sends register requests to the Tonmind PA SystemLite, thedevice number, device type, device model and MAC address will be sent to TonmindPASystem Lite as well. Once registered, this device will be found on the TonmindPASystem Lite and also web interface, after success register, the corresponding SIPaccount color will change to be blue from gray.



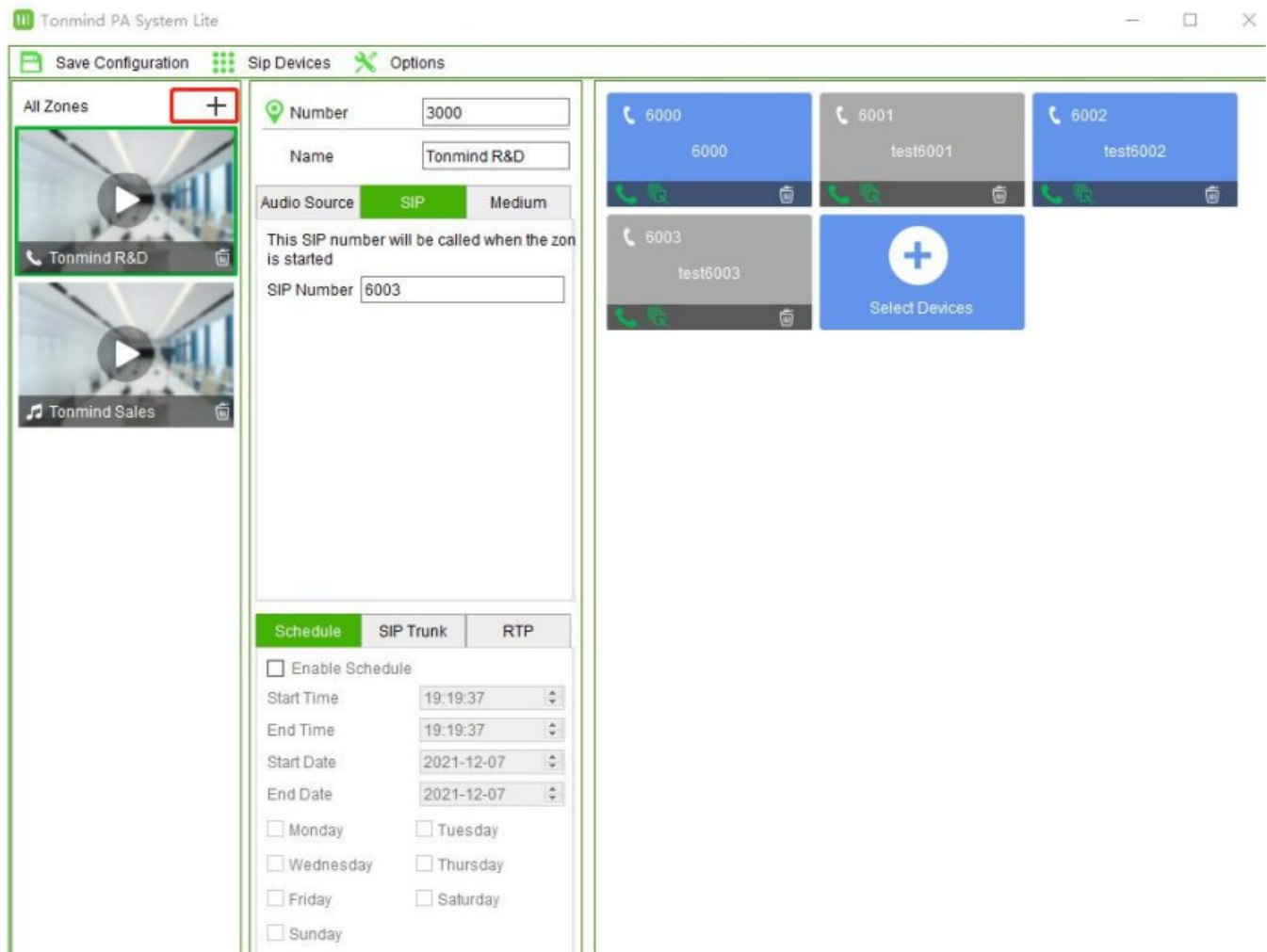
Addition: Setup IP Phone and Soft Phone

It is the same as above setting of IP Audio Devices, go into the web interface of the IP phone or soft phone, after finish the required information of SIP number, name, password, server IP and port, then it will send the message

to Tonmind PAsystemLite and if succeed, the correspondig server SIP account will change to blue, andit will be able for calling.

Setup Paging Zones

After registered all IP audio endpoints to the Tonmind PA System Lite, next stepyouhave to group them. A group/zone can be the IP audio devices of a specific area or asame type of IP audio devices. By grouping the IP audio devices, you can achieve group (zone) -based SIPpaging, music, notification, etc. To create paging groups, at the place of all zones , click the to add zones.



- Number: number can be dialed from an IP phone or other SIP IP audio device to make live announcements to this paging group.
- Name: A name to identify this group.
- Select Devices: Select the member devices of this group

Zones Control


After finish creating zones, there are some introduction of each zone controlling and functioning.

Voice source option


There are two kind of voice source, and Define to be two type: Audio source and Medium.

Save Configuration
Sip Devices
Options

All Zones +



Tonmind R&D



Tonmind Sales

Number
3000

Name
Tonmind R&D

Audio Source

SIP

Medium

Please select audio source

☒ Internal Microphone (Conexant SmartAudio HD)

☐ 扬声器 (Conexant SmartAudio HD)

☐ None

- Audio Source: two source, one is live microphone in, and the other one is the server could detect the signal from outside radio or music player like spotify and thenautoplaying
- Medium: Local file and support MP3

SIP function


The SIP number could be the zone number or device sip number, for single deviceor zones device control, and if the device is the IP phone, it is able to call them, vice versa.

Save Configuration


Sip Devices

Options

All Zones +



Tonmind R&D



Tonmind Sales

Number 3000

Name Tonmind R&D

Audio Source

SIP

Medium

This SIP number will be called when the zone is started

SIP Number 6000

3000

6000

6000

6003

test6003

Time &Schedule Set

Click the Enable Schedule button to start setting as you require, like start time, end time, date range.

Schedule

SIP Trunk

RTP

☒ Enable Schedule

Start Time

19:19:37

End Time

19:19:37

Start Date

2021-12-07

End Date

2021-12-07

☐ Monday
 ☐ Tuesday

☐ Wednesday
 ☐ Thursday

☐ Friday
 ☐ Saturday

☐ Sunday

SIP Trunk Set

When need to integrate our server Tonmind PA System Lite to other IP-PBX or someother SIP server, need to set SIP trunk as below, the thirty party server IP, port and nubmer and passwork and two others as you need, then it will be connecting to other devices and server.

Schedule	SIP Trunk	RTP
<input checked="" type="checkbox"/> Enable SIP Trunk		
SIP Server	<input type="text" value="Please input sip server"/>	
SIP Port	<input type="text" value="Please input sip port"/>	
SIP Number	<input type="text" value="Please input sip num..."/>	
SIP Password	<input type="text" value="Please input sip pass..."/>	
Display Name	<input type="text" value="Please input display n..."/>	
Expire Time	<input type="text" value="Please input expire time"/>	

RTP Set

And if some IP device do not have SIP number, it also support RTP Multicasting to them.

Schedule	SIP Trunk	RTP
<input checked="" type="checkbox"/> Enable RTP Multicast		
RTP Address	<input type="text" value="eg. 239.255.0.0:5008"/>	

We keep to update and develop the software systemandproduct line to our customer. Any questions please feel free to contact us, thanks.

support

Xiamen Tonmind Technology Co.,Ltd
Room 806, Building B, No.55 Wanghai Road, 2ndSoftware Park, Xiamen, Fujian,China,361008.
Tel: +86-0592-5928832
www.tonmind.com

TONMIND

Documents / Resources

	<p>TONMiND PA System Lite Software [pdf] User Manual</p> <p>PA System Lite Software, PA System Lite, Software</p>
--	---

References

- [T PA System,IP Speaker,SIP Paging Adapter | Tonmind](#)
- [T PA System,IP Speaker,SIP Paging Adapter | Tonmind](#)