



TONMiND Audio Manager Software User Manual

[Home](#) » [TONMIND](#) » TONMiND Audio Manager Software User Manual 

Contents

1 TONMiND Audio Manager Software

2 Introduction

3 System Options Setting

4 Installation Guide

5 How to Get License Key

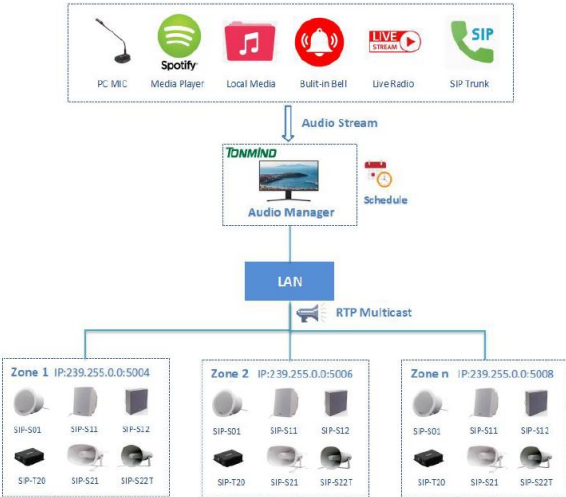
6 Documents / Resources

6.1 References

7 Related Posts



TONMiND Audio Manager Software



Introduction

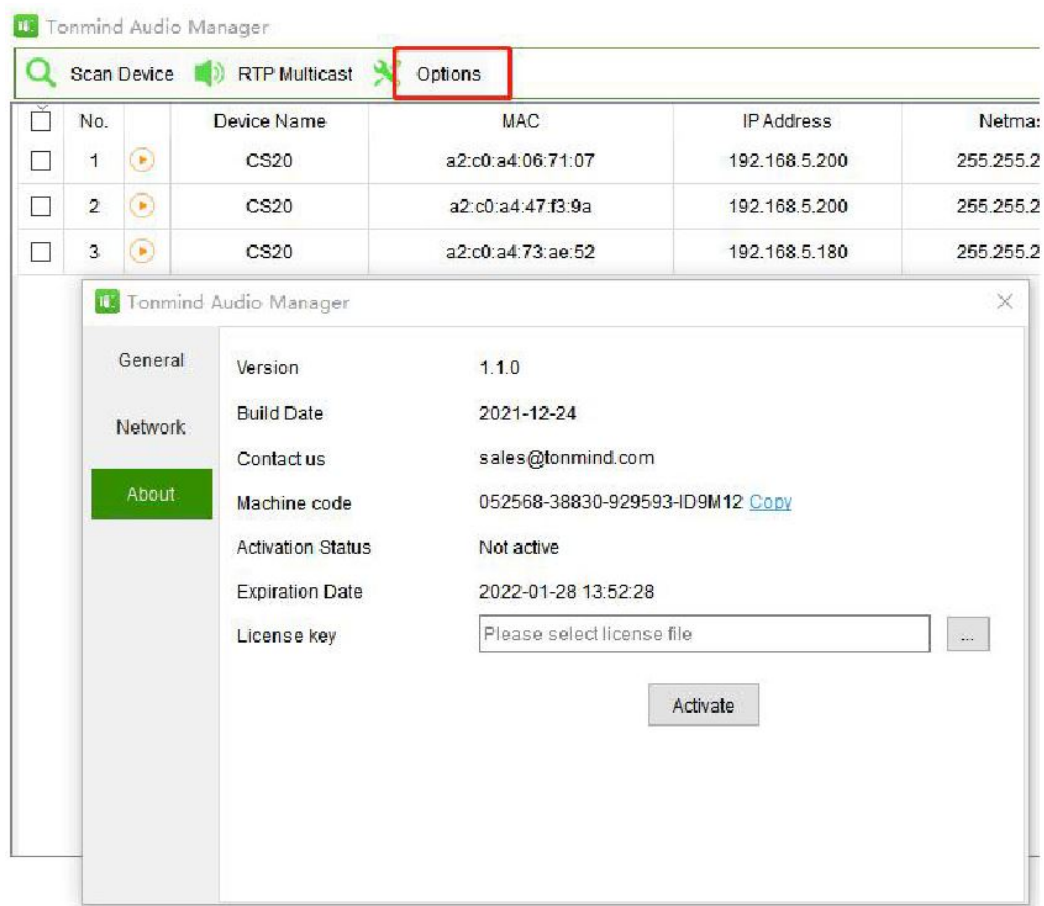
About Tonmind Audio Manager

Tonmind Audio Manager is an audio broadcast software based on IP multicast. It adopted to be used in LAN and supports auto scan batch setting of Tonmind IP Speaker and SIP Paging Adapter. It is able to play various audio sources from SIP call, live radio, local media player, universal windows media player (for example, Spotify, iTunes, VLC, etc.) via RTP Multicast. Users can easily set and control zones, contents, rings, volume and scheduling, especially used in school, retail or commercial centers.

System Options Setting

After clicking to start the system, then going into the page as below , click on the option for setting.

- General: Language(English/Chinese).
- Network: Check the IP address and SIP port.
- About: Check system version, contact information and authorized license.



Installation Guide

Scan Device

Click scan device, all IP speakers connected to the Internet will show as follows, and you can name the IP speaker after enter device name.

ii Tonmind Audio Manager

☐ Scan Device
 ☐ RTP Multicast
 ☐ Options

<input type="checkbox"/>	No.	Device Name	MAC	IP Address	Netmask	Gateway
<input type="checkbox"/>	1	CS20	a2:c0:a4:47:f3:9a	192.168.5.103	255.255.255.0	192.168.5.1
<input type="checkbox"/>	2	CS20	a2:c0:a4:73:ae:52	192.168.5.180	255.255.255.0	192.168.5.1
<input type="checkbox"/>	3	CS20	a2:c0:a4:06:71:07	192.168.5.200	255.255.255.0	192.168.5.1

SIP Setting

One device has two SIP accounts to register in IP PBX or other SIP server.

☐ Scan Device
 ☐ RTP Multicast
 ☐ Options

<input type="checkbox"/>	No.	Device Name	MAC	IP Address	Netmask	Gateway	SIP Account	RTP Mu
<input type="checkbox"/>	1	CS20	a2:c0:a4:47:f3:9a	192.168.5.103	255.255.255.0	192.168.5.1	6001@192.168.5....	239.255
<input type="checkbox"/>	2	CS20	a2:c0:a4:73:ae:52	192.168.5.180	255.255.255.0	192.168.5.1		239.255
<input type="checkbox"/>	3	CS20	a2:c0:a4:06:71:07	192.168.5.200	255.255.255.0	192.168.5.1	6503@192.168.5....	239.255

Current Device : CS20

SIP Account 1

User Name

Password

Display Name

Server Host

Server Port

SIP Account 2

User Name

Password

Display Name

Server Host

Server Port

RTP Multicast IP

There are 10 RTP addresses can be received for each device, please note that: port numbers do not use continuous numbers when setting the same RTP addresses. Use discontinuous numbers. eg:

239.255.0.1:6000 239.255.0.1:6001 239.255.0.1:6002 ×
 239.255.0.1:6000 239.255.0.1:6002 239.255.0.1:6004 (√)

- Multicast address ranges: 224.0.0.0-239.255.255.
- Port range: 1500-6300.

Tonmind Audio Manager

<input type="checkbox"/>	No.	Device Name	MAC	IP Address	Netmask	Gateway	SIP Account	RTP Multicast IP
<input type="checkbox"/>	1	CS20	a2:c0:a4:47:f3:9a	192.168.5.103	255.255.255.0	192.168.5.1	6001@192.168.5....	239.255.0.1:6000
<input type="checkbox"/>	2	CS20	a2:c0:a4:73:ae:52	192.168.5.180	255.255.255.0	192.168.5.1		239.255.0.1:5015
<input type="checkbox"/>	3	CS20	a2:c0:a4:06:71:07	192.168.5.200	255.255.255.0	192.168.5.1	6503@192.168.5....	239.255.0.1:5011

Current Device : CS20

1	<input type="text" value="239.255.0.1:6000"/>	6	<input type="text"/>
2	<input type="text" value="239.255.0.1:6002"/>	7	<input type="text"/>
3	<input type="text" value="239.255.0.1:6004"/>	8	<input type="text"/>
4	<input type="text"/>	9	<input type="text"/>
5	<input type="text"/>	10	<input type="text"/>

Firmware Version

How to upgrade Tonmind IP speaker's firmware version in AM system.

- Click firmware version No..
- Down load the latest firmware version from www.tonmind.com or contact Tonmind sales.
- Select the latest version firmware CS20-xxx-APP.bin.
- Click upgrade to refresh, it would require about 20s.

Tonmind Audio Manager

<input type="checkbox"/>	No.	ice N:	MAC	P Address	Netmask	Gateway	3IP Account	RTP Multicast IP	Firmware Version	
<input type="checkbox"/>	1		CS20	a2:c0:...	192.16...	255.255...	192.16...	6001@1...	239.255.0.1:6000	CS20-V2.8.5
<input type="checkbox"/>	2		CS20	a2:c0:...	192.16...	255.255...	192.16...		239.255.0.1:5015	CS20-V2.8.5
<input type="checkbox"/>	3		CS20	a2:c0:...	192.16...	255.255...	192.16...	6503@1...	239.255.0.1:5011	CS20-V2.8.5

Current Device : CS20

Firmware File

Volume

Setting output& input volume, it is able for one by one or bulk setting. Click to locate the speakers. After set, click the to check the volume.

Tonmind Audio Manager

<input type="checkbox"/>	No.	ice N:	MAC	P Address	Netmask	Gateway	3IP Account	TP Multicast I	rmware Versio	Volume	System	
<input type="checkbox"/>	1		CS20	a2:c0:...	192.16...	255.255...	192.16...	6001@1...	239.255.0....	CS20-V2.8.5	0,0	admin
<input type="checkbox"/>	2		CS20	a2:c0:...	192.16...	255.255...	192.16...		239.255.0....	CS20-V2.8.5	0,0	admin

Current Device : CS20

Input Volume : 0

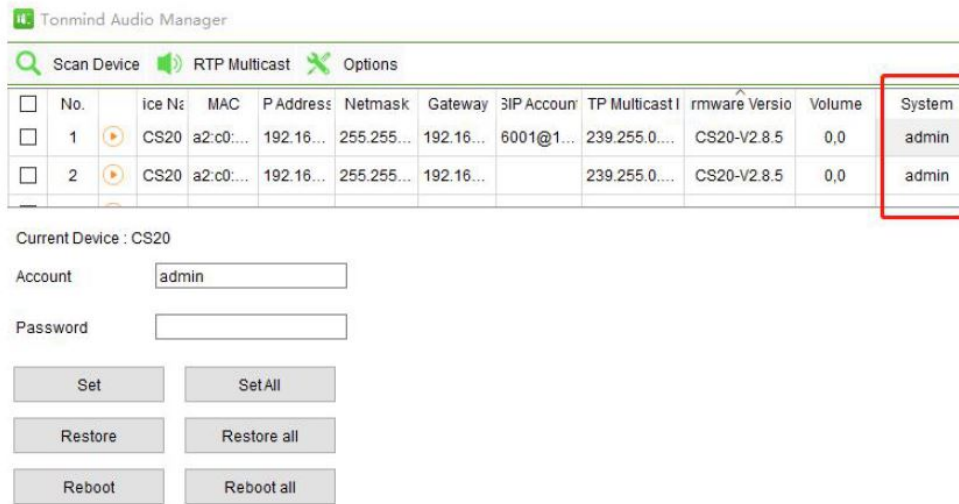
Output Volume : 0

Amp Auto OFF : ☒

System Restore

Account and password setting, Tonmind speakers and device factory setting is account: admin and password: tm1234.

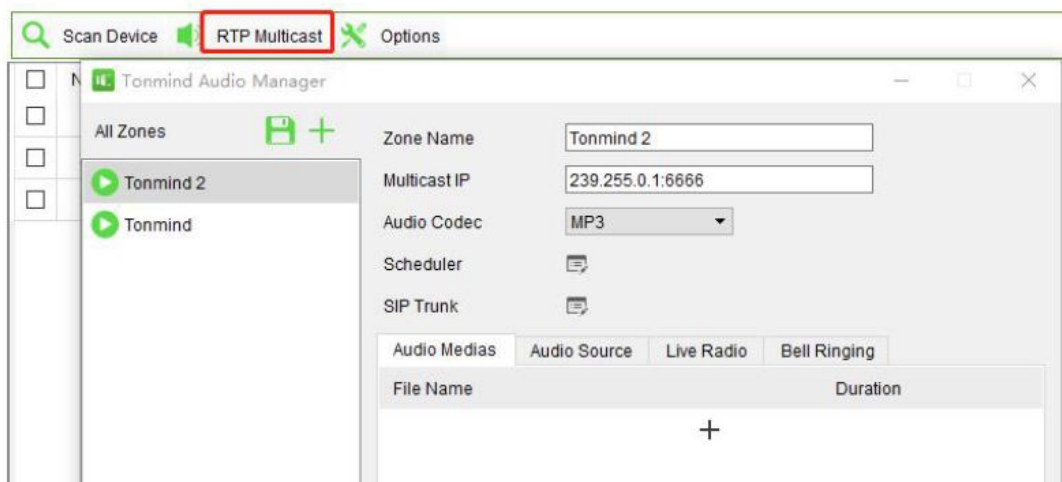
- Click , it will return to factory setting.



System RTP Multicast

Zone Setting

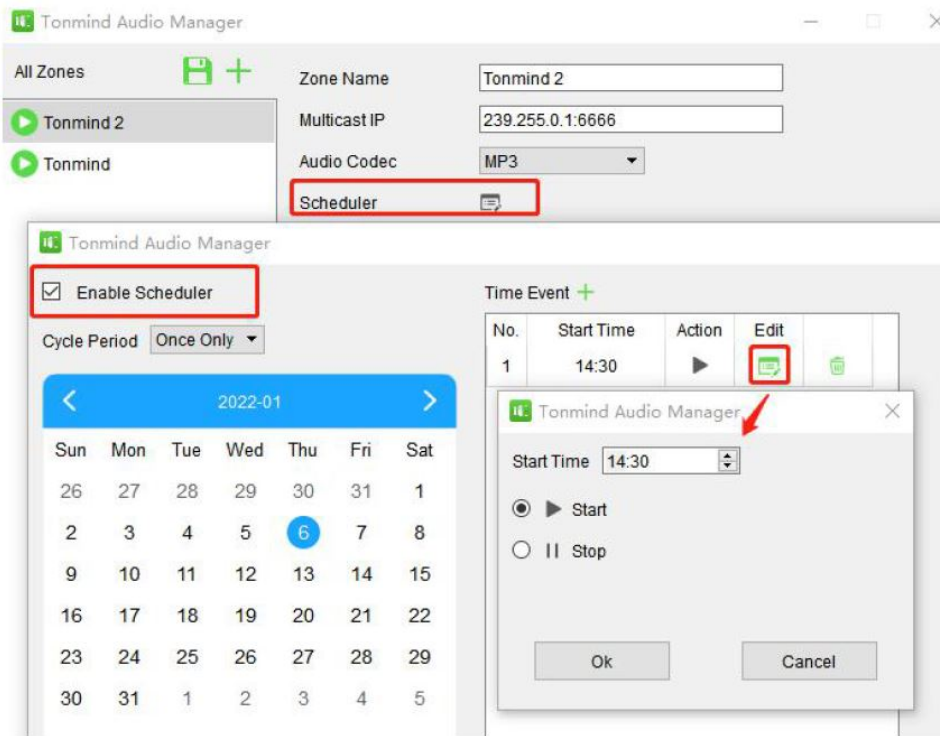
Click RTP multicast for zones setting,  for adding zones and  for setting saving.



- **Name:** A name to identify the zone.
- **Multicast IP:** RTP IP address for manage audio streams for the speakers and other device.
- **Audio Codec:** four options to be MP3, G722, PCMU, PCMA.

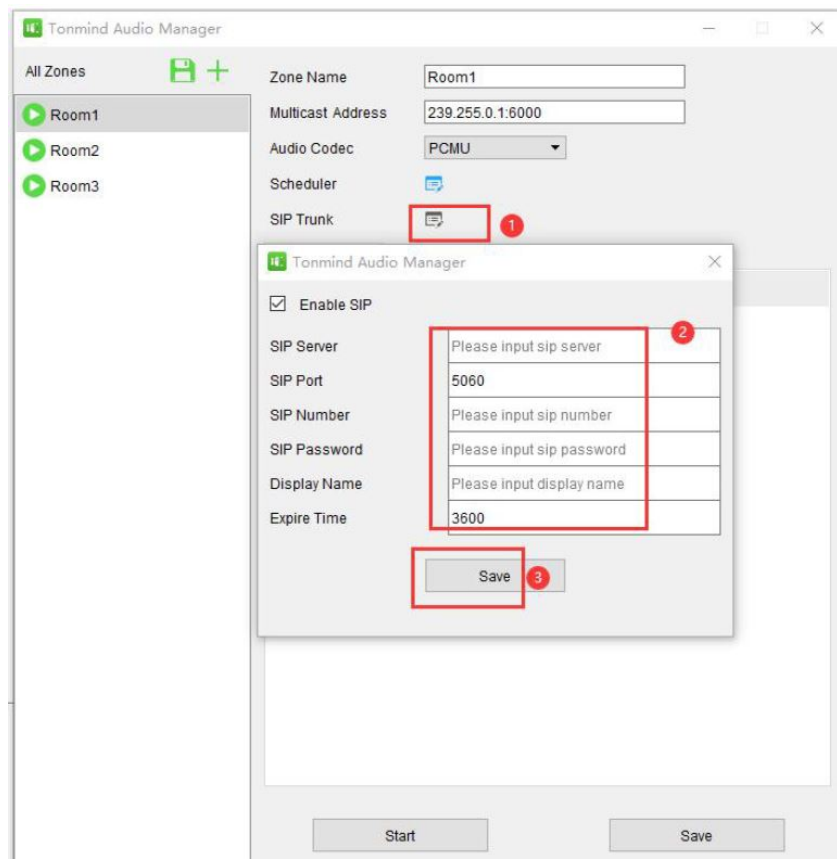
Schedule Setting

Click scheduler and choose enable scheduler for setting, there are four kind of cycle period to be once only, daily, weekly and monthly. For each time event, it is able for setting when to start or stop.



SIP Trunk Setting in Zone

- Press SIP trunk and enable SIP.
- Register a SIP account from a SIP sever, like PA system or IP PBX.
- Save the setting, then you can make phone call as a audio stream to the speakers and other device of the zone.

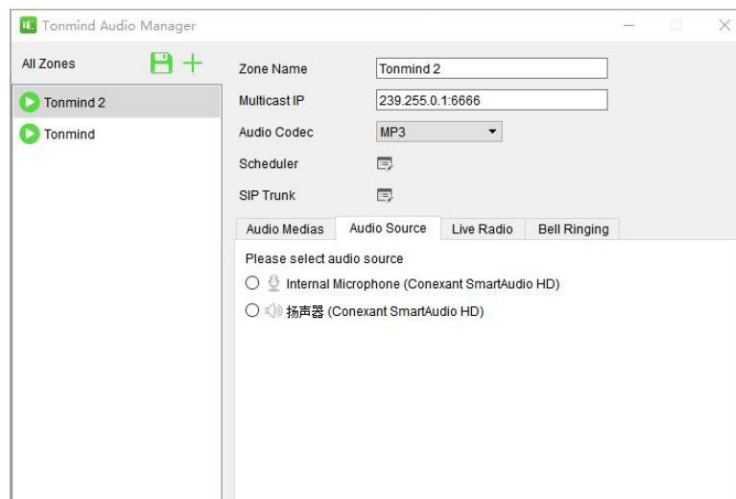


Audio Stream

Audio media: Local resources, you could add like MP3 docs to the system.



Audio source: There are two ways, one is live microphone in, you can announce directly in PC or a connected microphone. And the other one is the system could detect the signal from outside music player like spotify and then auto playing.



Live radio: put a live radio address and press start button, then the real-time radio is able be played.

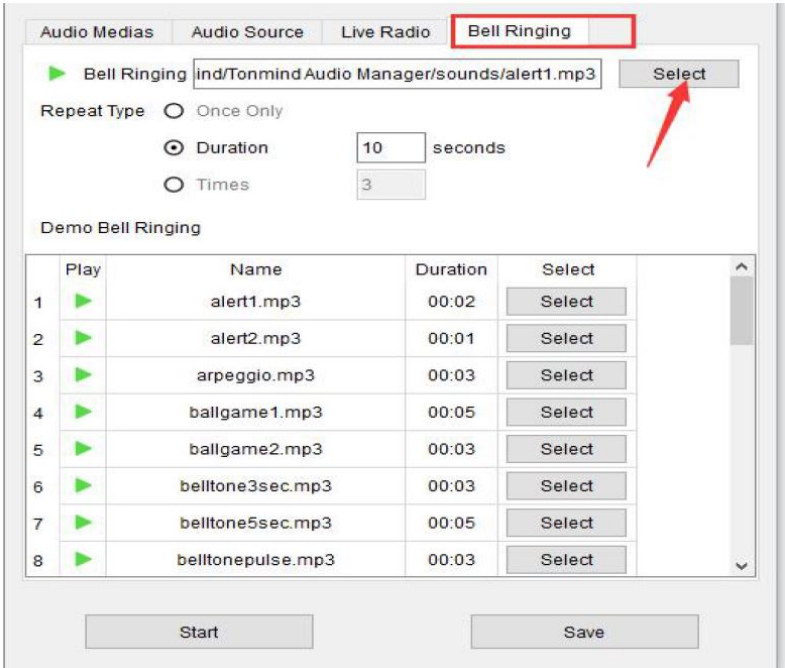


Bell ringing: there are 28 options build in, you can also customize your own and select from PC or connected device.

Repeat type:

- Once only: one time playing.

- Duration: unit seconds, for example if the audio is 2s and set 5s , so total is 2.5 cycle.
- Times: audio cycle times, for example if the audio is 2s and play 3 times, so total is 6s.




How to Get License Key

- Enter option-"about".
- Copy the machine code to us by e-mail: sales@tonmind.com or contact Tonmind sales directly.
- We'll send a license key to you after receiving machine code, active it then license works.

<https://www.tonmind.com>

Documents / Resources

	<p>TONMiND Audio Manager Software [pdf] User Manual Audio Manager Software, Audio Manager, Software</p>
---	---

References

- [T PA System,IP Speaker,SIP Paging Adapter | Tonmind](#)
- [T PA System,IP Speaker,SIP Paging Adapter | Tonmind](#)