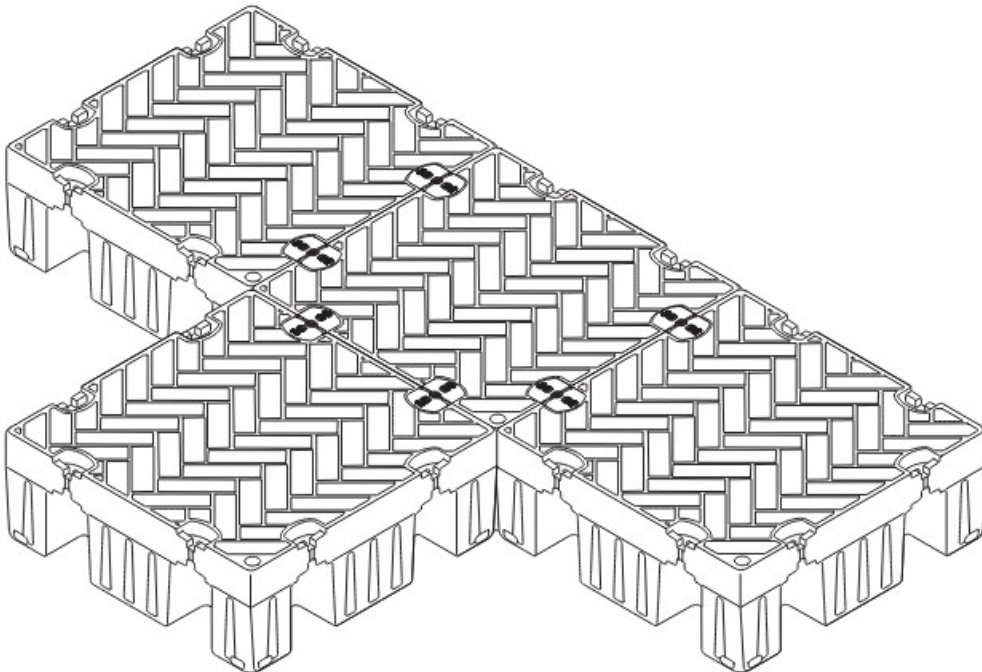
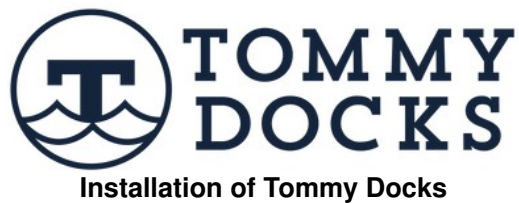




TOMMY DOCKS 12×8 Flexx Floating Dock and Accessories Instruction Manual

[Home](#) » [Tommy Docks](#) » TOMMY DOCKS 12×8 Flexx Floating Dock and Accessories Instruction Manual 

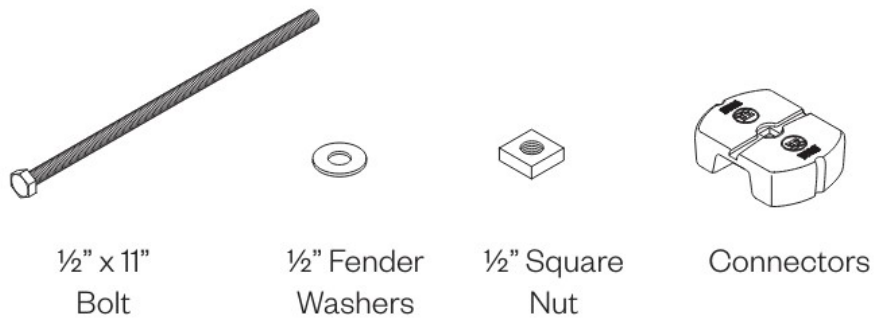


Flexx Floating Dock and Accessories

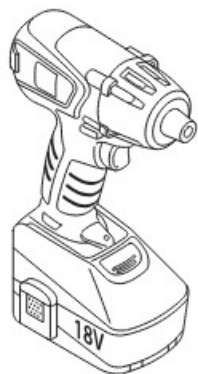
Contents

- [1 Connecting Flexx Floats](#)
- [2 Anchoring Options](#)
- [3 Attaching Gangway](#)
- [4 Attaching Ladder](#)
- [5 Attaching Bumper](#)
- [6 Attaching Cleats/LED Lights](#)
- [7 Documents / Resources](#)
 - [7.1 References](#)

Connecting Flexx Floats



Recommend Tools



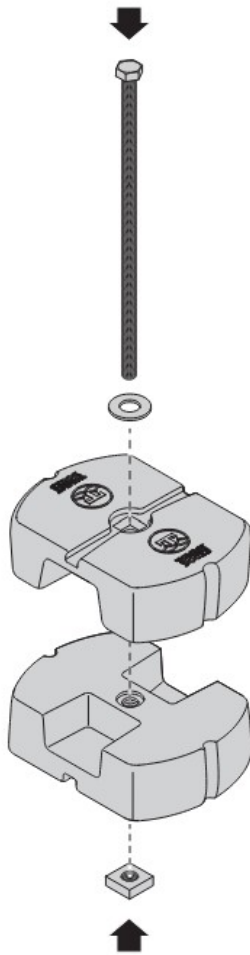
Cordless Drill

Set Drill torque setting to 13



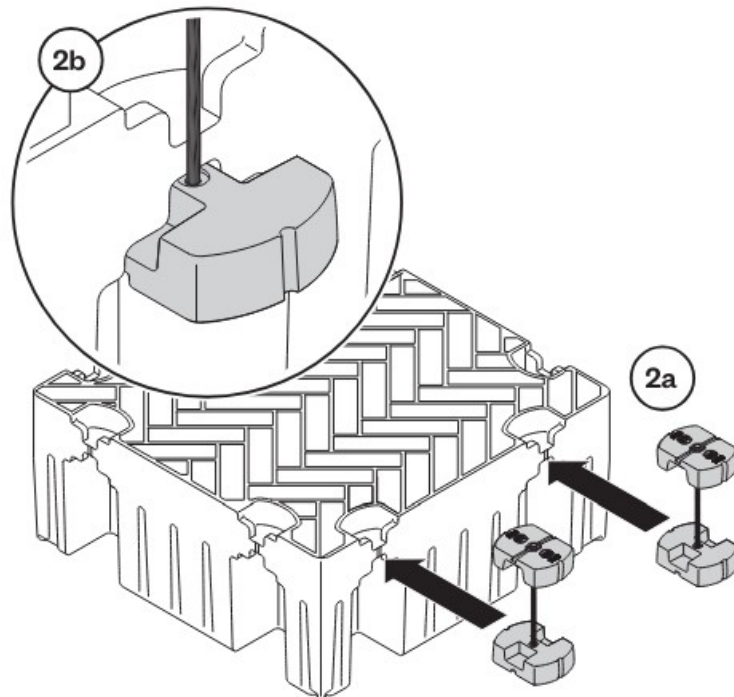
$\frac{3}{4}$ " Socket

1. Sit the Square Nut in the Bottom Connector. Then take the $\frac{1}{2}$ " x 11" Bolt and put it through the Washer, Top Connector and then the Bottom Connector as shown. Hand tighten the bolt to the $\frac{1}{2}$ " Square Nut under the Bottom Connector then stop after about an inch.



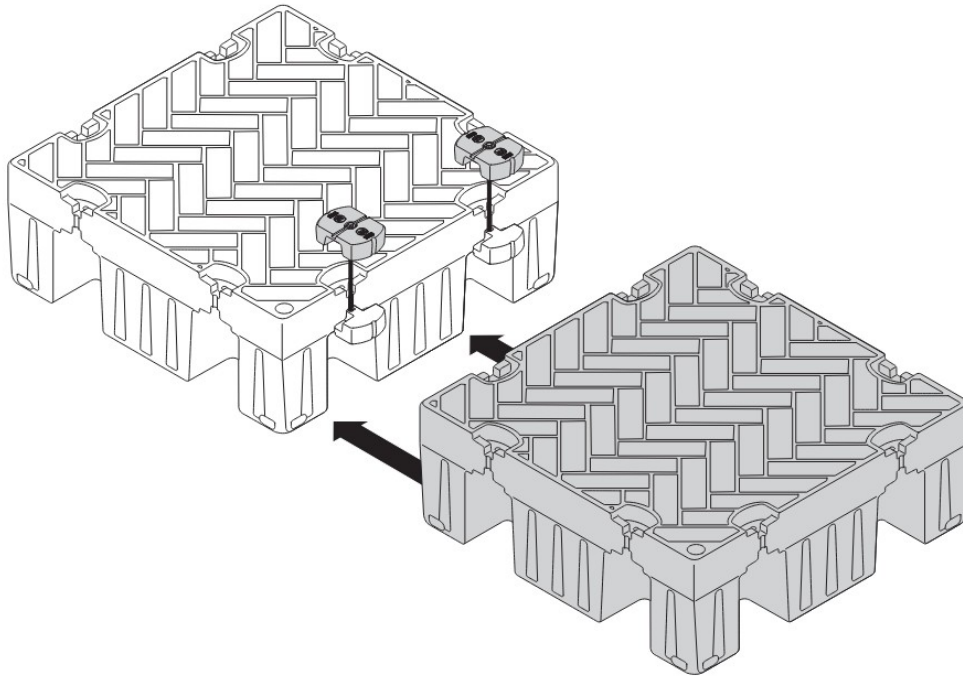
2. Place each Connector Assembly into the Float as shown to connect another float (2a & 2b).

Note: It is important that the bolt is not tightened all the way up to allow for the Connector Assembly to fit into place.



3. With the additional Float put into place, tighten each Bolt. Continue this process to arrange the remaining Floats.

Note: If you unscrew the Square Nut too fast to remove the Connectors, the Nut may fall into the water.



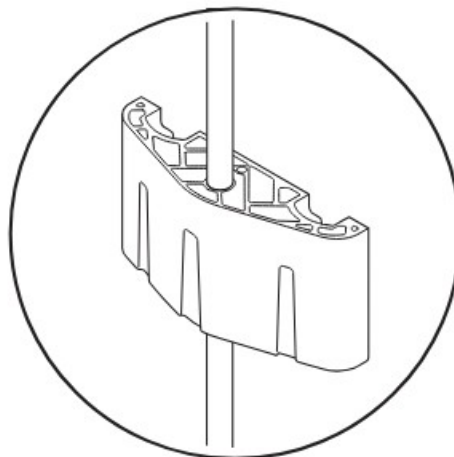
Note: Floats must be connected together to a flat face. You will not be able to attach the connectors to two sides of the float at once.



Anchoring Options

4. 4a. Pipe Guide (0-8')

For water depths up to 8 feet, use pipe guides with augured aluminum pipe. Ensure sufficient pipe length above the deck to accommodate water fluctuations. Beyond 8 feet, installing pipe becomes increasingly challenging.



TDFX-200, TDFX-201, TDFX-202

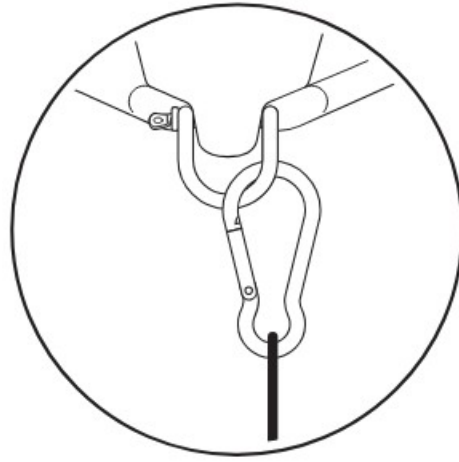
4b. Anchor Line (8'+)

For depths exceeding 8 feet, utilize anchor lines (rope, chain, or cable).

Choose anchors suitable for your lake bottom conditions, such as mushroom anchors, deadweight anchors, screw anchors, or pile anchors.

Ensure the lines are long enough to reach from the anchor point to the dock with some slack then tighten the

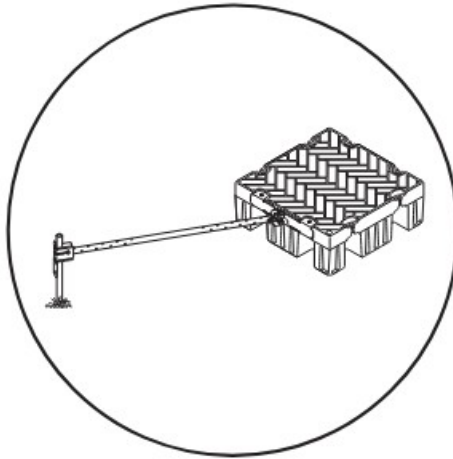
lines once satisfied with position. Opt for marine-grade ropes or chains for durability.



TDFX-204

4c. Shore Arm (8' +)

In depths of 8 feet or more, shore arms can secure the system to the shoreline, eliminating the need for water-based anchoring. Ideal for waterfronts with deep drop-offs and fluctuating water levels.



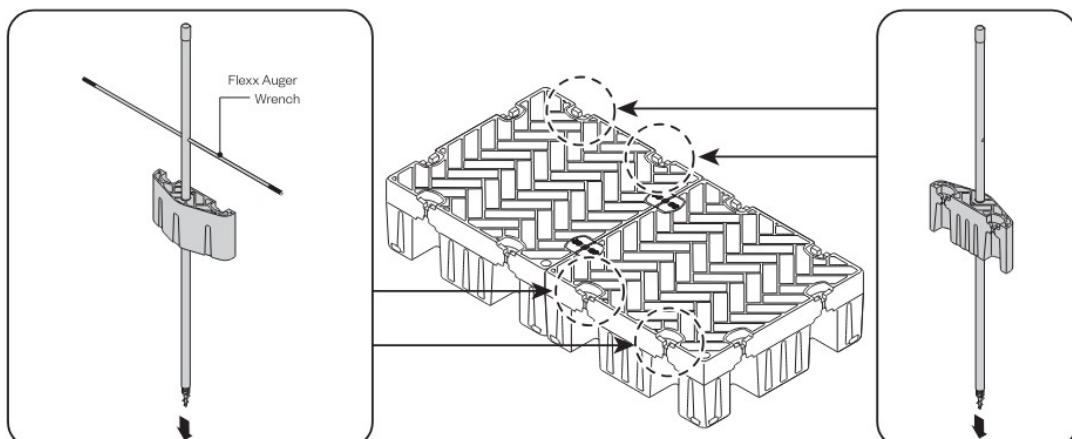
TDFX-219

There are many variables to consider when choosing the correct anchoring system. For assistance or inquiries, contact us at (715) 842-3804 or email info@tommydocks.com or visit tommydocks.com.

4a Pipe Guides, TDFX-200, TDFX-201, TDFX-202

After assembling the layout, align the Flexx Pipe Guide piece into place along the side of the desired Flexx Float and connect to it by using two sets of Connectors (see Step 1-3). It is recommended to stagger the Pipe Guides to provide more solid anchoring support throughout the dock layout. Use the Flexx Auger Wrench to turn the posts down into the lake bottom.

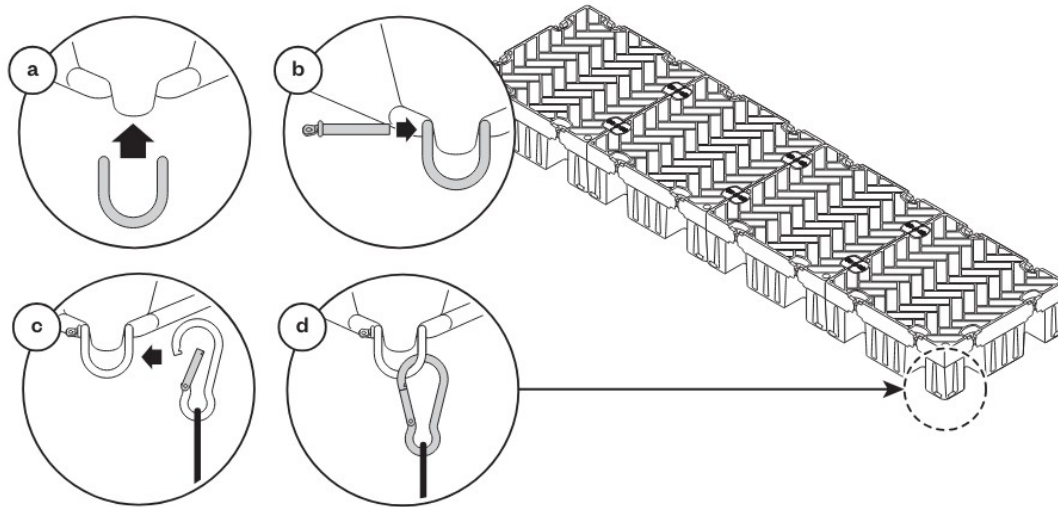
Note: The Flexx Auger Wrench pictured (item TD-10089) is sold separately."



4b Anchor Line, TDFX-204

Fasten the D-Ring to the bottom corner of the desired Flexx Float (a & b). Once in place, clip on the Anchor Line to the D-Ring using the attached Carabiner (c & d). Run the Anchor Line through your anchor and drop into the water. Criss-cross the lines for an optimal hold on the dock.

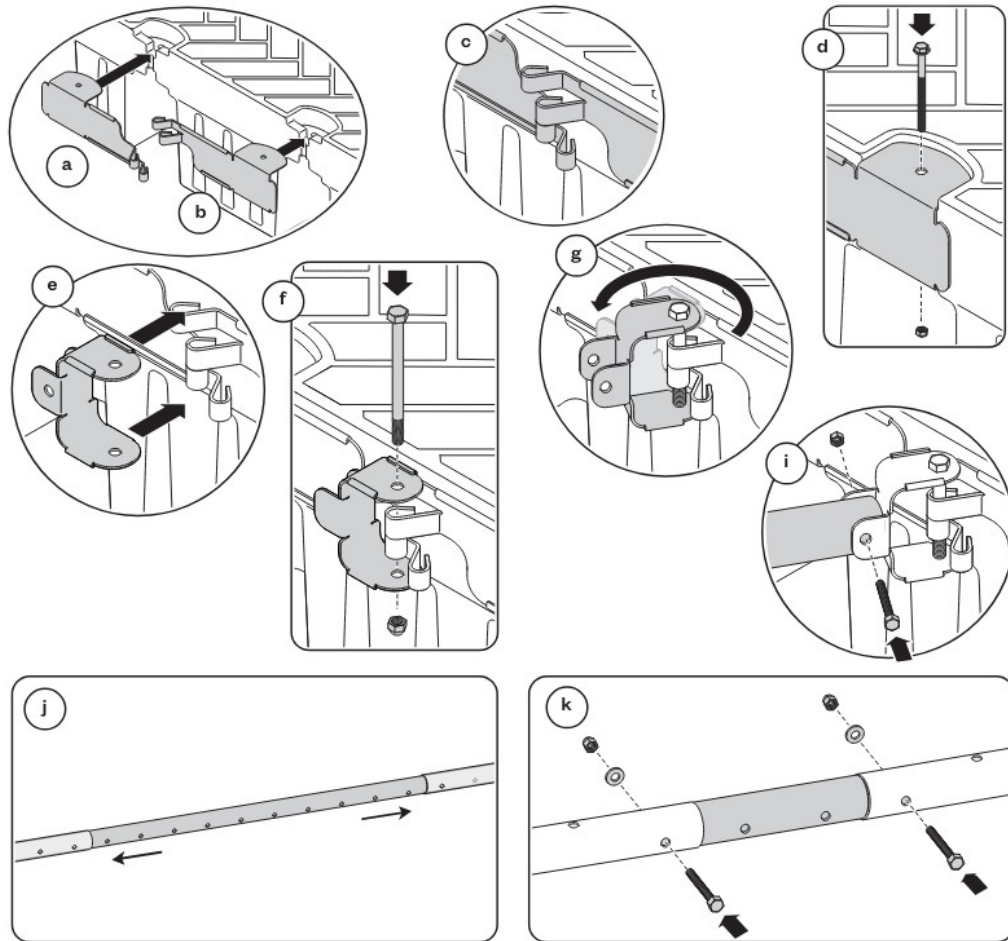
Note: If not using the Anchor Line Kit, the D-Ring (item TDFX-401) is sold separately.



4c Shore Arm, TDFX-219

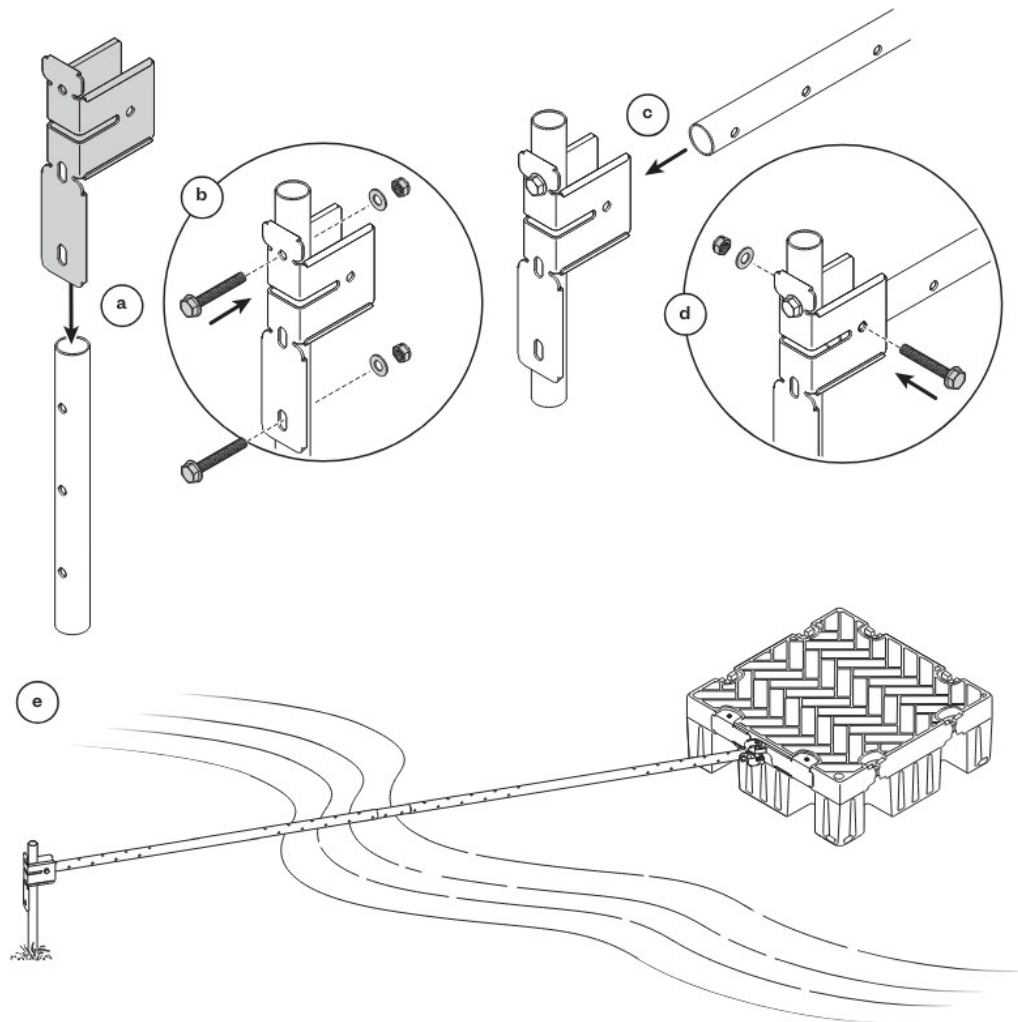
Place the Left Shore Arm Bracket into the left insert of the desired Flexx Float (a). Then place the Right Shore Arm Bracket in the right insert of the float (b) so the two center pieces align (c). Attach the Brackets by using the 1/2"-13 x 5-1/2" Bolt and 1/2" Nut (d). Place the Shore Arm Hinge over the center part of the Shore Arm Brackets (e). Fasten the 1/2"-13 x 6" Partially Threaded Bolt through to the 1/2" Nut on the bottom (f).

Swivel the Shore Arm Hinge to install hardware (g). Insert the end of the shore Arm Pole into the flanges of the Shore Arm Hinge, making sure holes in the Shore Arm Pole are aligned with the holes in the flanges of the Shore Arm Hinge and secure using one (1) 1/2"-13 x 3-1/4" Bolt and one (1) 1/2" Nut (i). Connect the two Shore Arm Poles to each other by placing each end of Shore Arm Extension into each Shore Arm Pole end (j). Choose desired length and then fasten the two posts to the Shore Arm Extension with two (2) 1-1/2"-13 x 3" Bolts, two (2) 1/2" Washers and Lock Nuts (k).



4c Place the Shore Arm Stake Bracket onto the top part of the Stake (a) and fasten together using two (2) 1-1/2"-13 x 3" Bolts, two (2) 1/2" Washers and two (2) Lock Nuts (b). Then secure the stake to shore. Once assembled, take the end of the Shore Arm Pole and place it into the Shore Arm Stake Bracket and fasten it to the Stake Bracket making sure holes in the Shore Arm Pole are aligned with the holes in the Shore Arm Stake Bracket (c).

Fastening using one (1) 1/2"-13 x 3-1/4" Bolt and one (1) 1/2" Nut (d). Assembly is now complete (e).

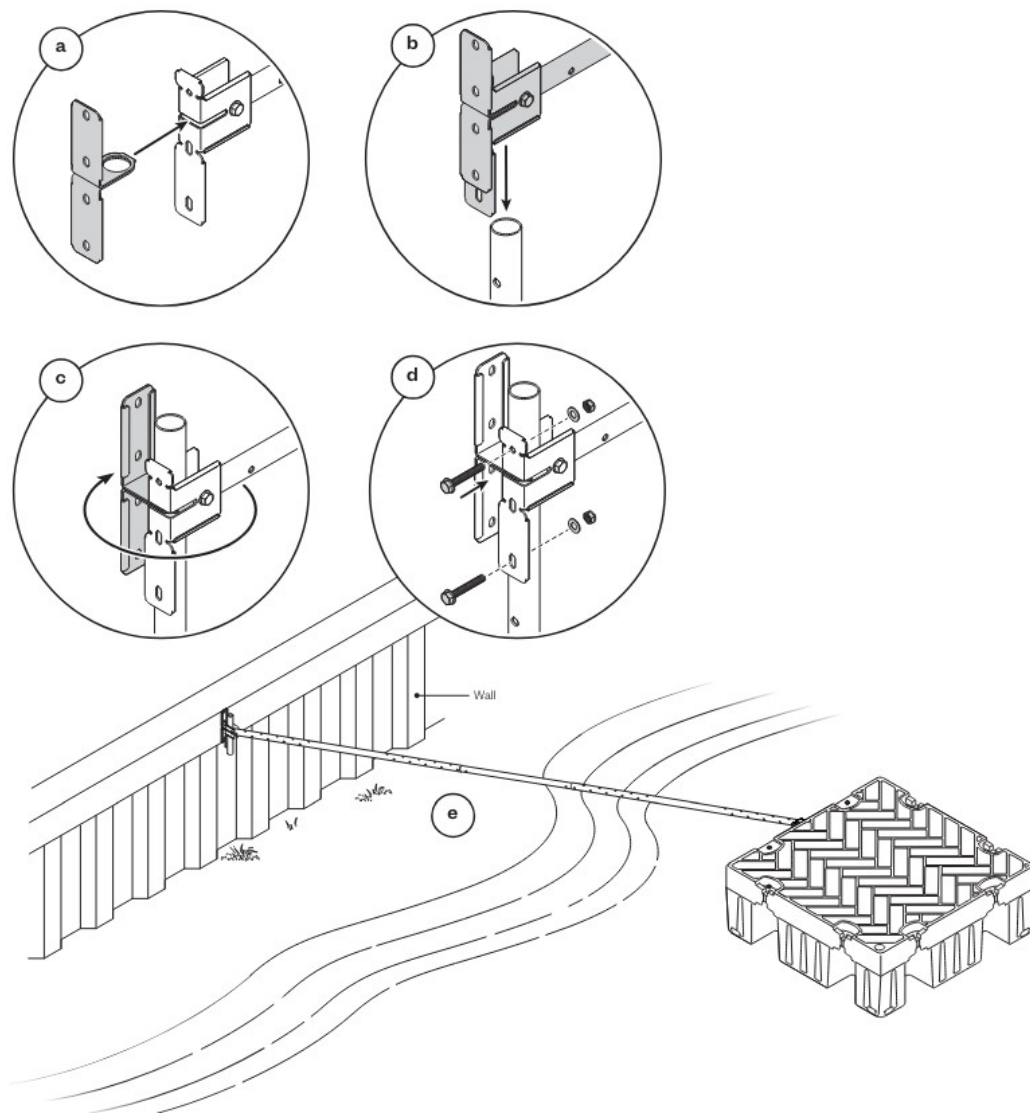


4c Shore Arm Seawall Kit, TDFX-229

Assemble the Shore Arm Seawall kit by taking the Seawall Bracket and sliding the rounded flange into the slit of the Shore Arm Stake Bracket (a). Then take the Shore Arm Seawall Pin piece and run it through the hole lined up on the two brackets (b). Turn Seawall Bracket right or left to better enable installation of bolts (c).

Then fasten the Shore Arm Stake Bracket to the Pin using two (2) 1-1/2"-13 x 3" Bolts, two (2) 1/2" Washers and two (2) Lock Nuts (d). Use desired fasteners to mount the Seawall Bracket to your seawall.

Note: The Shore Arm Seawall Kit (item TDFX-229) is sold separately.

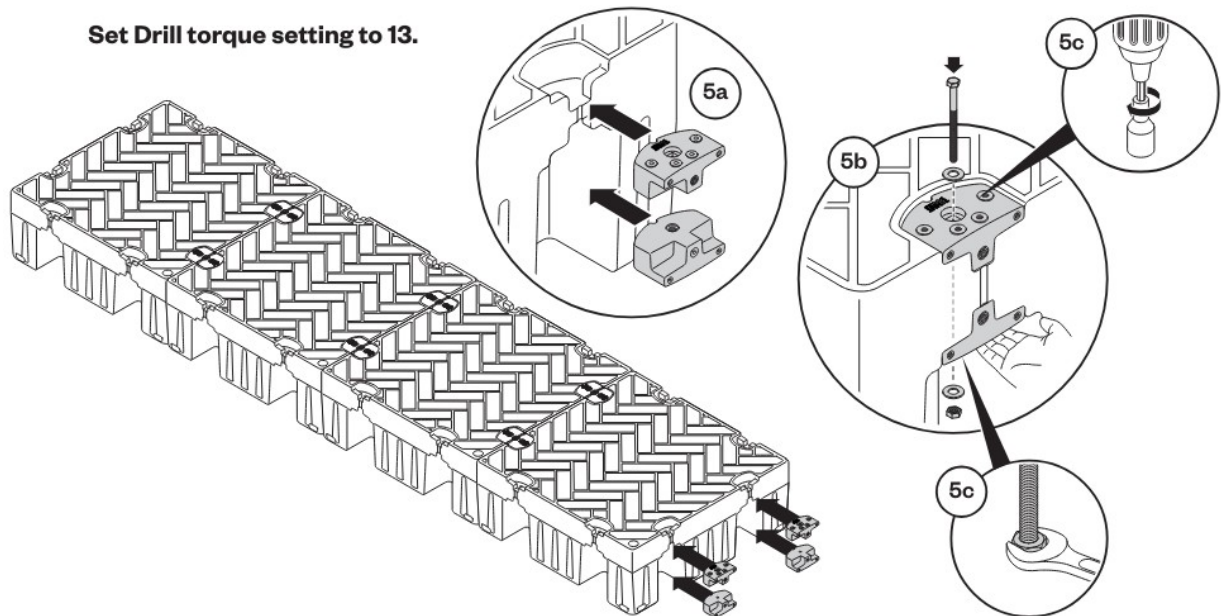


Attaching Gangway

5. Flat Face Connectors, TDFX-106

After assembling the layout, insert the Flat-Face Connectors to the desired Flex Float (5a) and attach the Top Flat Face Connector to the Bottom Flat Face Connector by running one (1) 1/2" x 7" Partially Threaded Bolt through the top 1/2" Washer and securing from underneath with the other 1/2" Washer and Nut (5b). Hold the Nut on the Bottom Flat Face Connector with a 3/4" Wrench and use the Cordless Drill to fasten onto the insert.

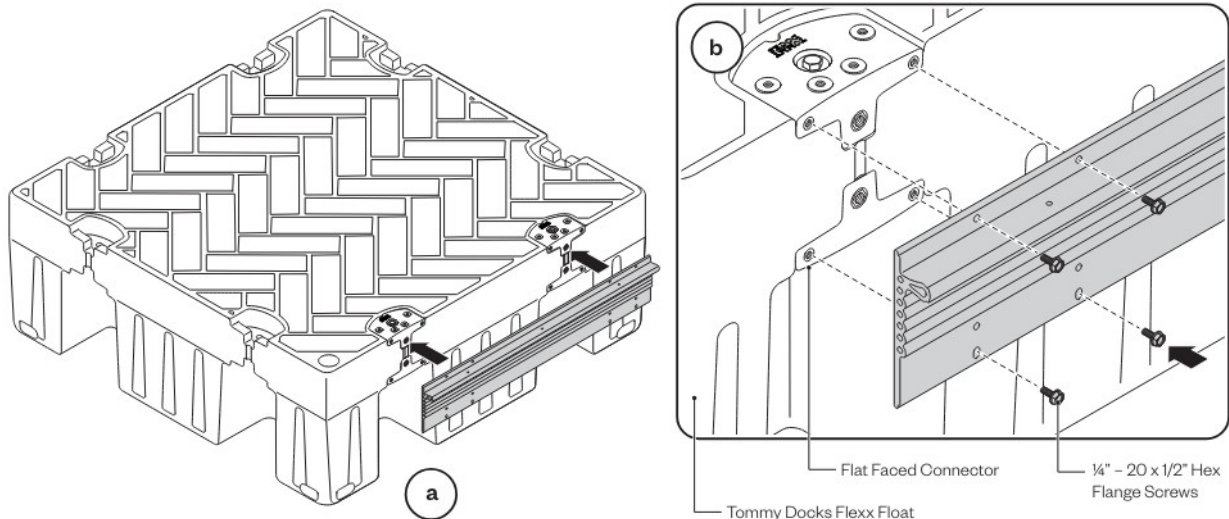
Set Drill torque setting to 13.



6. 6a Flexx Gangway, TDFXGWT-304, TDFXGWT-308, TDFXGWT-312

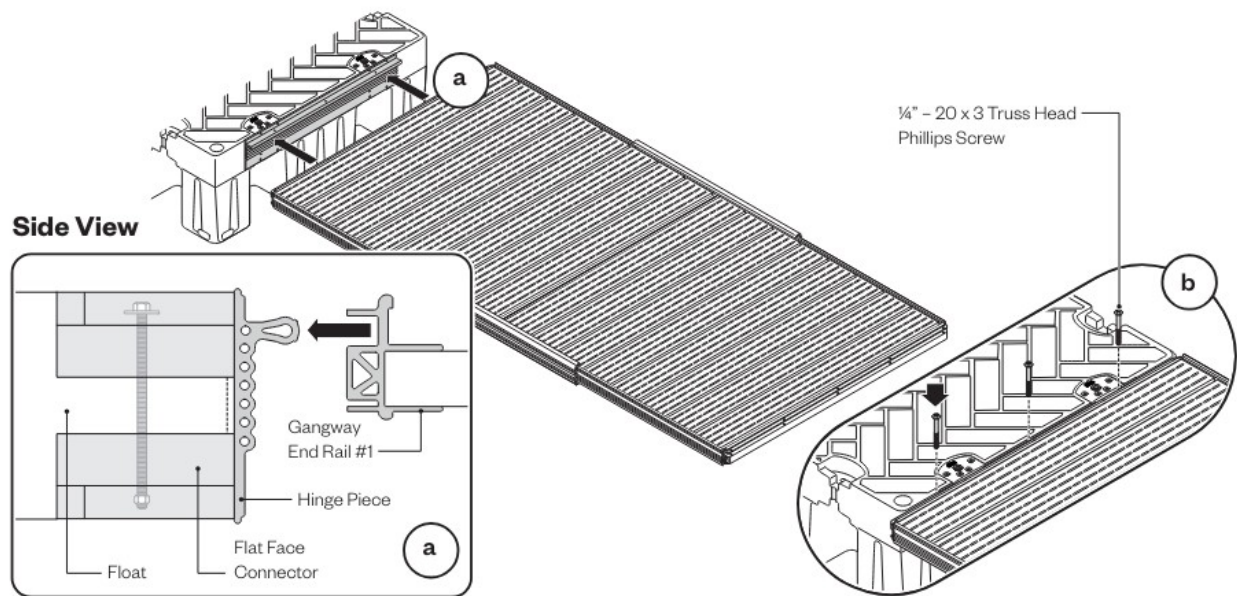
Align Gangway Hinge with Flat Face Connectors (a) and attach using the eight (8) 1/4"-20 x 1/2" Hex Flange Screws (b).

Set Drill torque setting to 10.



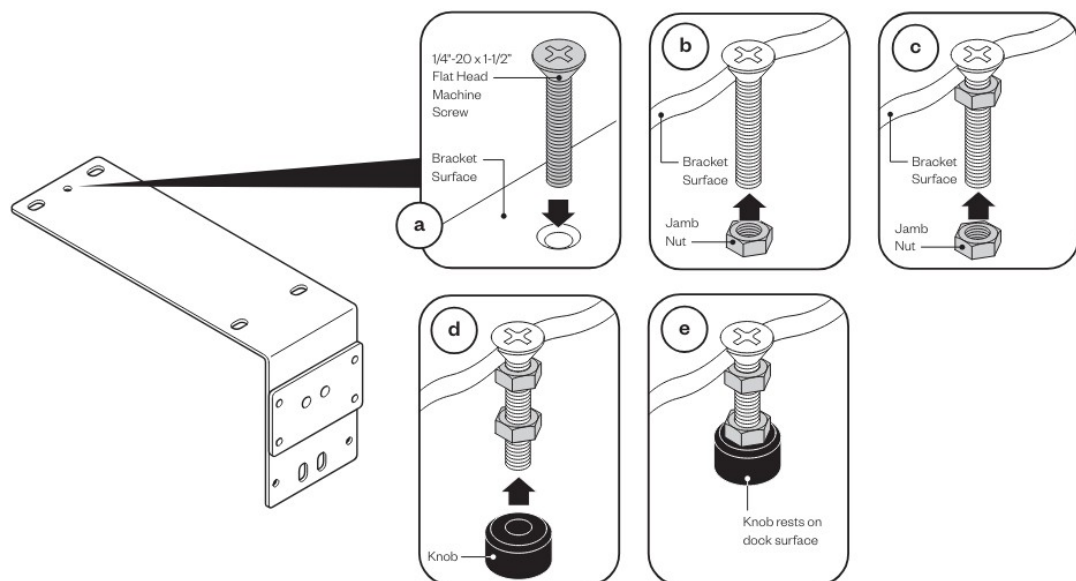
Attaching Ladder

6b Insert End Rail #1 of the Gangway section to the Hinge Piece (a) and fasten together using three (3) 1/4"-20 x 3" Truss Head Phillips Screws (b).

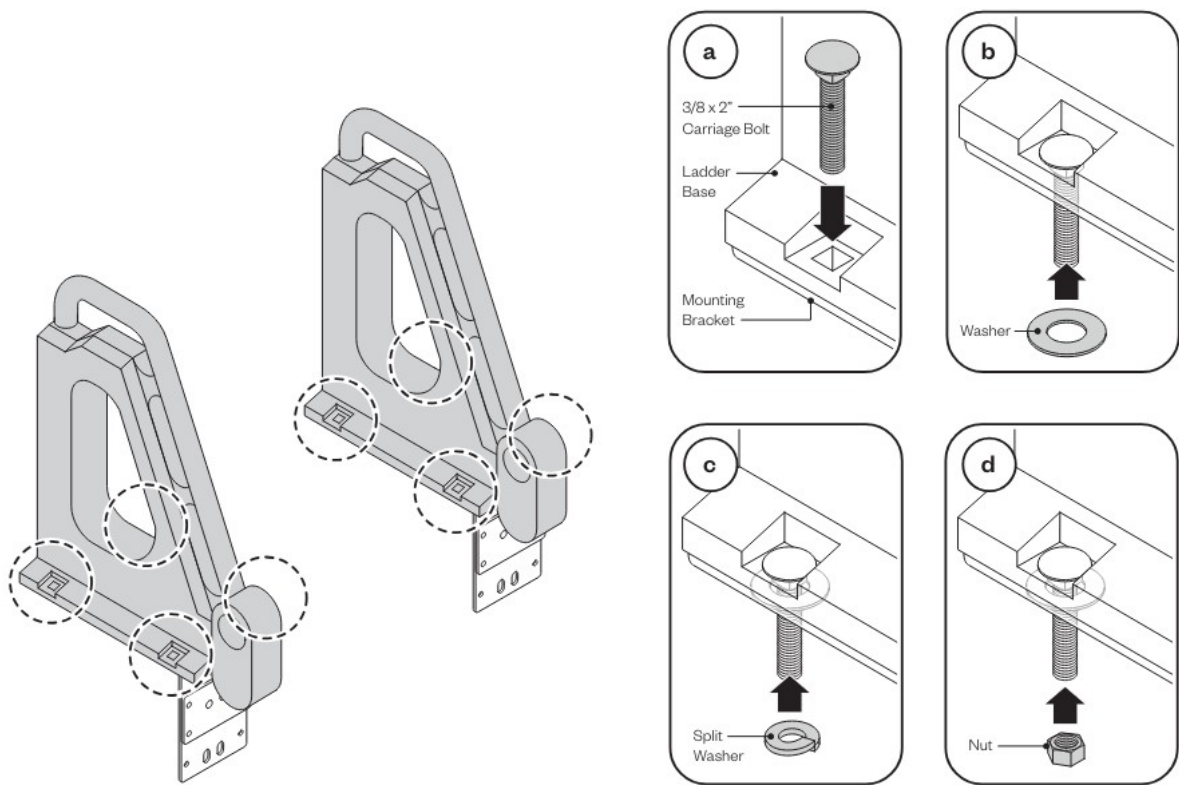


7. 7a Flexx Dock Ladder Kit, TDFX-207

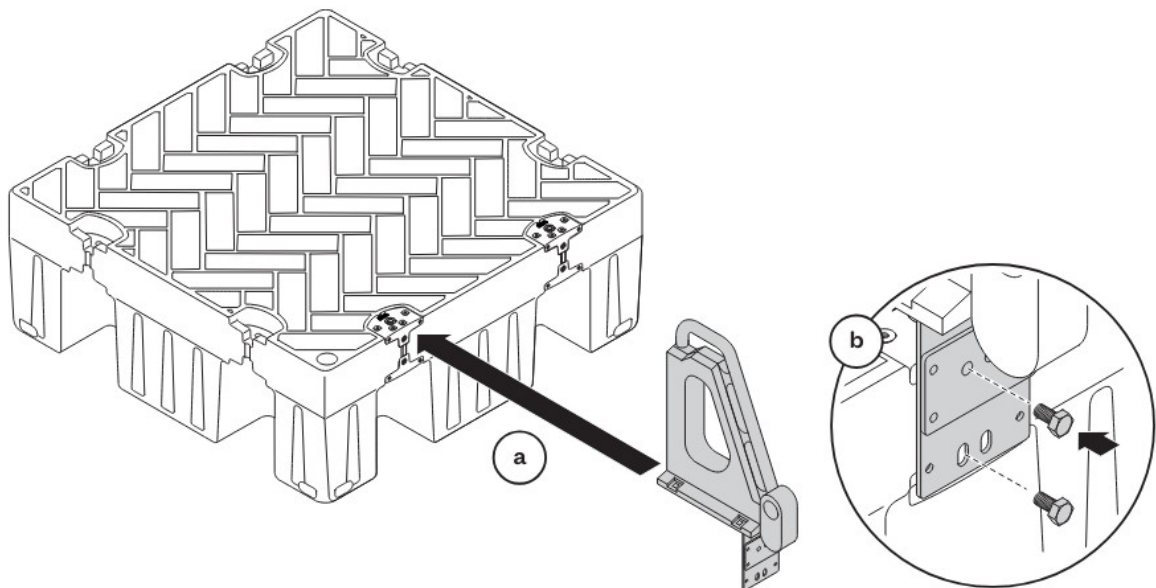
Place one (1) 1/4"-20 x 1-1/2" Flat Head Machine Screw through hole in the back of each Ladder Bracket (a). Attach one (1) Jam Nut onto each Screw and tighten so it is snug to each Ladder Bracket (b) (from the underside keeping it in place.) Then take the second Jam Nut and place it onto each Flat Head Machine Screw and tighten about 1/4" (c). Place one (1) knob onto each Flat Head Machine Screw (d) and tighten so it is snug with the second Jam Nut (e).



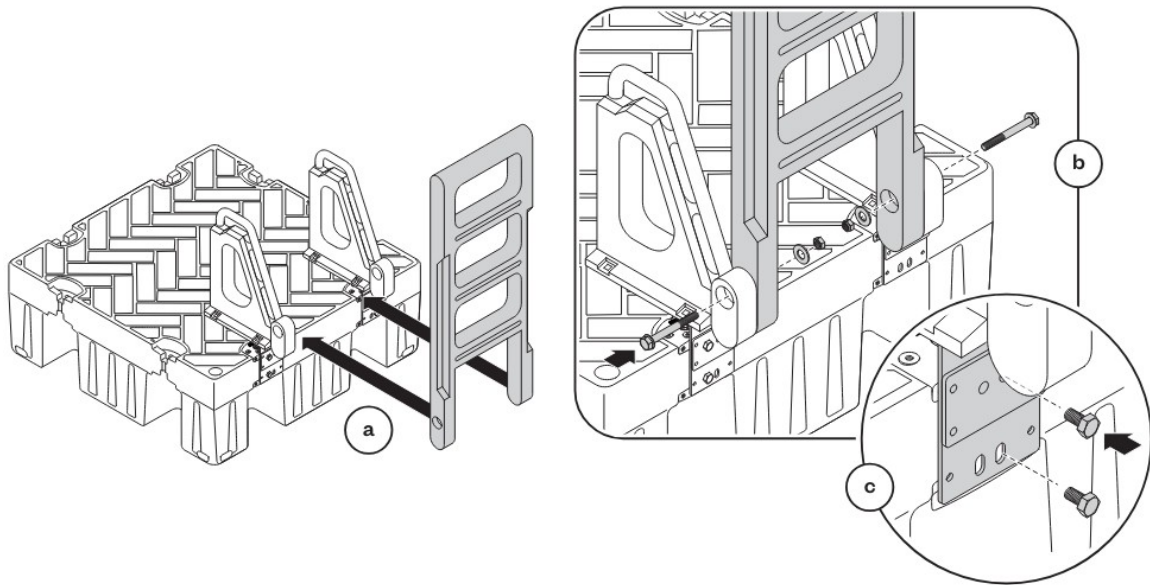
7b Secure Ladder Handles to Ladder Brackets by first inserting eight (8) 3/8" x 2" Carriage Bolts through Ladder Base and Ladder Bracket (a). On the underside, fasten the Flat Washer (b), Split Washer (c) and Hex Nut (d) onto each Carriage Bolt.



7c Align the left Ladder Brackets to the Flat Face Connector (a) and attach using the two (2) 1/2"-13 x 3/4" Hex Head Screws (b).



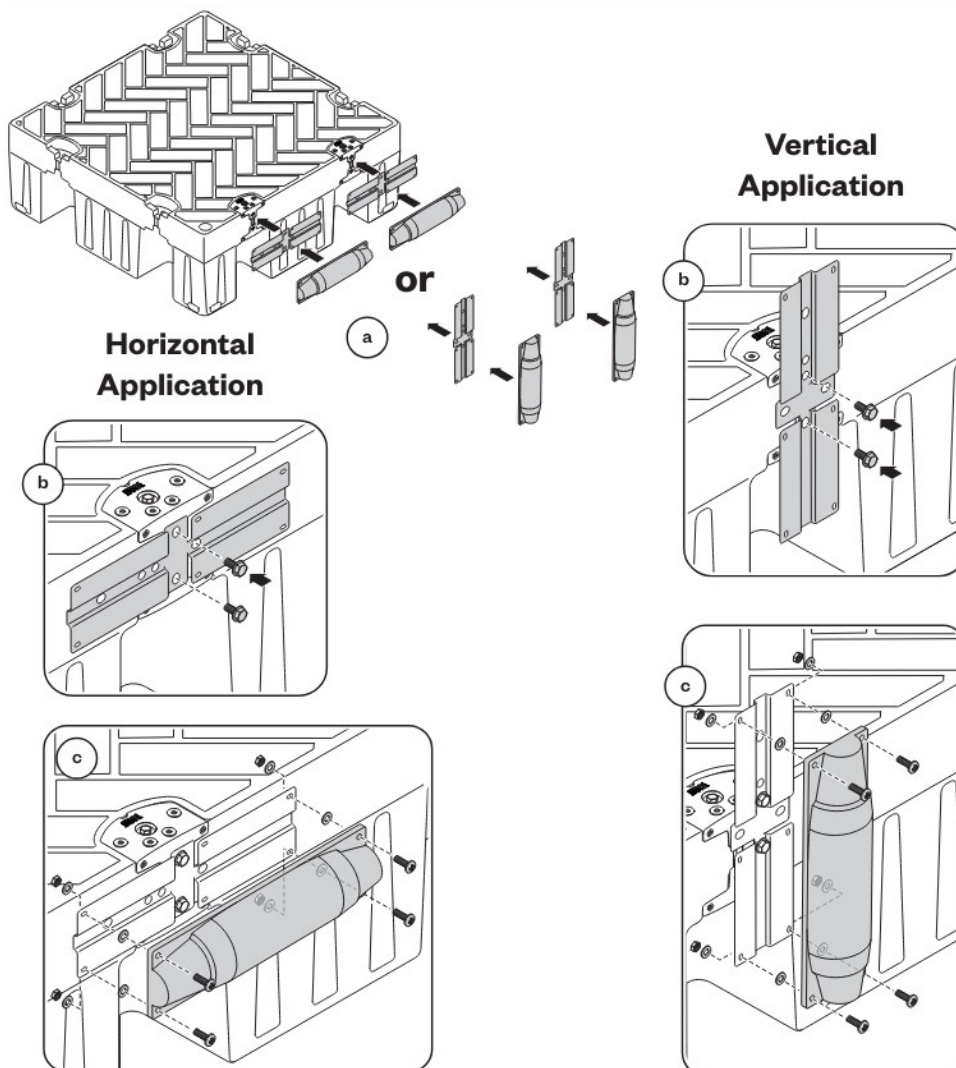
7d Place the second Ladder Bracket in place but do not attach it. Once the Ladder Brackets are in place, align Rungs with Ladder Brackets (a) and fasten the Rungs to the Ladder Handles with the provided hardware, two (2) 5/16" x 5" Partially Threaded Bolts, Washers and Lock Nuts (b). Fasten the second Ladder Bracket to the Flat Face Connectors using the two (2) 1/2"-13 x 3/4" Hex Head screws as performed in step (c).



Attaching Bumper

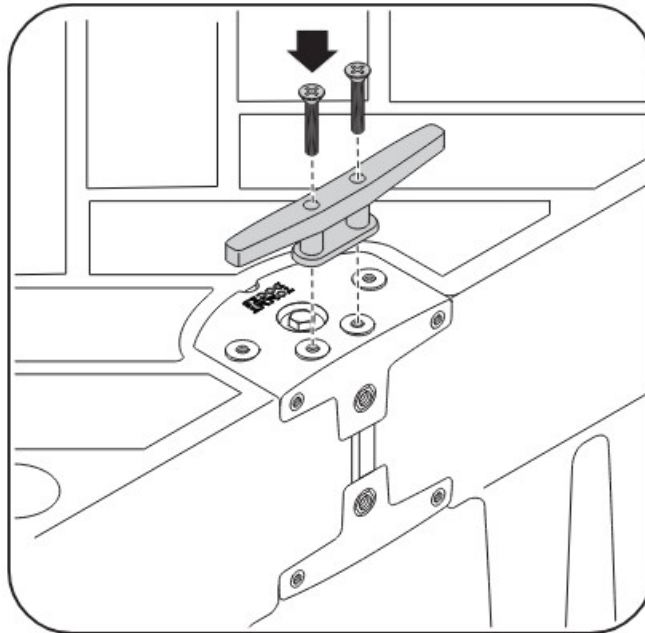
8. Flexx Bumper Kit, TD-30518

Align the Bumper Adapter Plates to the Flat Face Connectors (a) and attach using two (2) 1/2"-13 x 3/4" Hex Head Screws (b). The Adapter Plate can also be fastened vertically. Attach bumpers using four (4) 3/4" Screws, Washers and Nuts per Straight Bumper (c). Set Drill torque setting to 10.

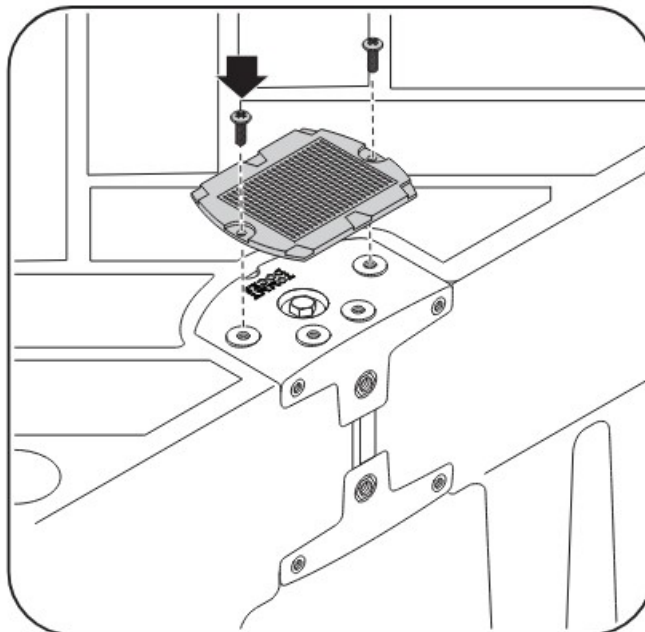


Attaching Cleats/LED Lights

9. 9a Flexx Dock Cleat Kit, TD-30525 Using the provided hardware, attach the Dock Cleats to the surface of the Flat Face Connectors using two (2) 10-32 x 1-1/2" Philips Flat Head Screws.



- 9b Flexx Light Kit , TD-30524 Using the provided hardware, attach the LED Solar Lights to the surface of the Flat Face Connectors using two (2) 8-32 x 1/2" Philips Pan Head Screws.



www.tommydocks.com

Tommy Docks
8608 Progress Way, Weston, WI 54476
Phone : 715-842-3804
Toll Free : 866-675-1880



[TOMMY DOCKS 12x8 Flexx Floating Dock and Accessories](#) [pdf] Instruction Manual
12x8 Flexx Floating Dock and Accessories, 12x8, Flexx Floating Dock and Accessories, Floatin
g Dock and Accessories, Dock and Accessories

References

- [User Manual](#)

[Manuals+](#), [Privacy Policy](#)

This website is an independent publication and is neither affiliated with nor endorsed by any of the trademark owners. The "Bluetooth®" word mark and logos are registered trademarks owned by Bluetooth SIG, Inc. The "Wi-Fi®" word mark and logos are registered trademarks owned by the Wi-Fi Alliance. Any use of these marks on this website does not imply any affiliation with or endorsement.