



TOMADO TSB9001B Stick Mixer Set Instruction Manual

[Home](#) » [TOMADO](#) » TOMADO TSB9001B Stick Mixer Set Instruction Manual 

TOMADO TSB9001B Stick Mixer Set Instruction Manual



Contents

- 1 SAFETY INSTRUCTIONS
- 2 PRODUCT DESCRIPTION
- 3 USING THE APPLIANCE FOR THE FIRST TIME
- 4 CLEANING AND MAINTENANCE
- 5 RECYCLING
- 6 ORDERING ACCESSORIES
- 7 WARRANTY CONDITIONS
- 8 Documents / Resources
 - 8.1 References
- 9 Related Posts

SAFETY INSTRUCTIONS

- First carefully read the instruction manual in full prior to using the appliance and store the manual in a safe place for future reference.
- Only use this appliance for the purposes described in the instruction manual.



Attention! Avoid contact with the blade when the appliance is switched on.

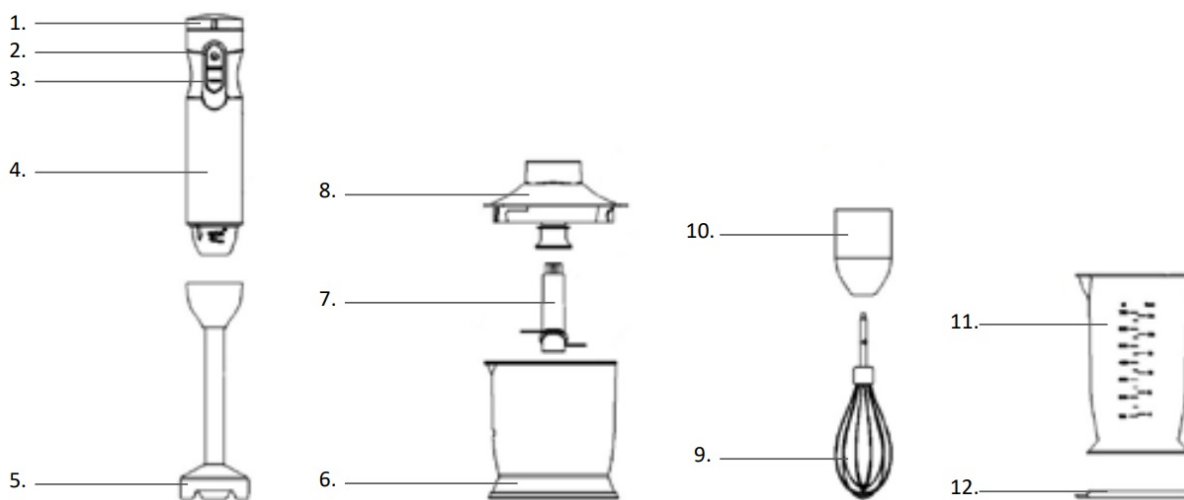


Warning: the blades of the stick mixer foot and mincer are very sharp.

- Make sure the appliance is switched off and remove the plug from the socket prior to changing accessories or touching parts that could rotate during use.
- Only connect the appliance to alternate current, to an earthed wall socket, with a mains voltage that corresponds with the information provided on the information plate of the appliance.
- Never bend the power cord sharply or allow it to run across hot parts.
- Fully unwind the cord to prevent it from overheating.
- Never place the appliance near appliances that give off heat, such as ovens, gas cookers, hotplates, etc. Keep the appliance away from walls or other objects that may catch fire, such as curtains, towels (cotton or paper, etc.).
- Always make sure the appliance is placed on an even, flat surface and is only used indoors.
- Do not leave the appliance unsupervised if the appliance is operational.
- Do not use the appliance if the plug, cord or appliance are damaged, or if the appliance no longer functions properly or if it is damaged in any other way. If this is the case, consult the retailer or our maintenance service.
- If the cord of the appliance is damaged, it should be replaced by the manufacturer, his customer service or a similarly qualified person in order to prevent hazardous situations.
- Do not pull the cord and/or appliance to remove the plug from the wall socket. Never touch the appliance with wet or damp hands.
- Keep the appliance out of reach of children. Children do not see the dangers associated with handling electrical appliances. Therefore, never allow children to operate electrical appliances without supervision. Keep the appliance and cord out of reach of children younger than 8 years of age.
- The appliance can be used by children of 8 years and older and persons with a limited physical, sensory or mental capacity or lack of experience or knowledge, provided they use the appliance under supervision or have been instructed about its safe use and understand the hazards involved.
- Children must not play with the appliance.

- The appliance may not be cleaned or maintained by children, unless this is done under supervision.
- If the appliance is not being used or is being cleaned, switch off the appliance and remove the plug from the socket.
- In case of a breakdown, never make repairs yourself; a tripped safety device in the appliance could indicate a defect that cannot be remedied by removing or replacing this safety device. Only original parts should be used.
- Never submerge the appliance, cord or plug in water.
- This appliance is intended for household and similar use, such as:
 - in staff kitchens, shops, offices and other work environments.
 - by guests of hotels, motels and other residential environments.
 - in Bed & Breakfast type environments
 - farms
- If the appliance is not used as intended, no compensation can be claimed in case of defects or accidents and the warranty will be invalidated.

PRODUCT DESCRIPTION



USING THE APPLIANCE FOR THE FIRST TIME

Follow these instructions when using the stick mixer for the first time: Carefully remove the stick mixer and accessories from the packaging and remove all packaging material.



Warning: the blades of the stick mixer foot and mincer are very sharp. Keep the packaging (plastic bags and cardboard) out of reach of children. After unpacking the appliance, carefully check it for external damage that may have occurred during transport.

Clean all accessories with warm water and a mild cleaning agent. Then dry these accessories thoroughly.

- stick mixer foot
- whisk
- mincer
- mincer cover
- blade

The outside of the motor unit and the coupling piece can be wiped with a lightly damp cloth.

Do not use aggressive cleaning agents. These could affect the material.

Always fully unwind the cord. Ensure that all of the components are properly dry before you start using the appliance.

STICK MIXER



Warning: the blades of the blender shaft are extremely sharp.

- Take the motor part and the blender shaft. Attach the blender shaft to the motor part by turning the blender shaft clockwise. To loosen it, turn the blender shaft the other way.
- Check whether the speed control is set on the lowest speed – to the right.
- Plug in the appliance.
- Lower the stick mixer into the food.
- Press the TURBO button for maximum speed or press the ON button to use the speed setting you can set on top of the motor part.
- As soon as you release the button (on or turbo), the stick mixer will stop.
- When you have finished mixing or blending and released the button, wait until the knives have stopped turning, before approaching the blender shaft with your hands.



The **SPEED CONTROL** is adjustable. By sliding the knob from right to left, the speed increases.

lowest speed = knob to the right

fastest speed = knob to the left

The **TURBO** button can also be used for instant power pulses without having to set the speed.

Attention: do not activate the stick mixer constantly, this can cause engine problems. Do not use the stick mixer for more than one minute continuously, wait until the engine is cooled down in three minutes before operating it again. Blend larger quantities in multiples sessions. The stick mixer can't exceed a running time of 15 seconds without a load.



Always unplug the appliance from the supply if it is left unattended and before assembling, disassembling and during cleaning.

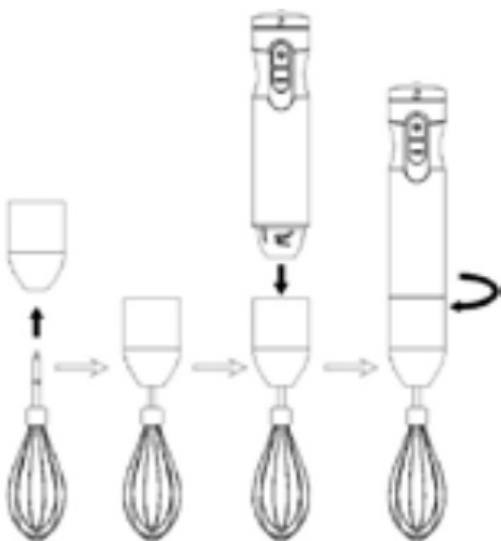
You can use the stick mixer in the measuring cup and also in another bowl. When blending directly in a saucepan while cooking, take the pan from the stove first to protect the appliance from overheating.

The anti-slip base is also an airtight lid for the measuring cup.

WHISK

Use the whisk for example for making whipped cream or beating egg whites.

- Take the motor part, the connector and the whisk.
- Attach the connector to the whisk.
- Attach the whisk to the motor part by turning the connector clockwise.
- Check whether the speed control is set on the lowest speed – to the right. You will get the best result.
- Plug in the appliance.
- Place the ingredients in the measuring cup. Make sure the measuring cup is not too full.
- Place the whisk in the measuring cup.
- Press the ON button to use the speed setting you have set on top of the motor part.
- As soon as you release the button (on or turbo), the whisk will stop.



Always unplug the appliance from the supply if it is left unattended and before assembling, disassembling and during cleaning. To remove the whisk after use, turn it anti clockwise from the motor part and pull the whisk from the connector

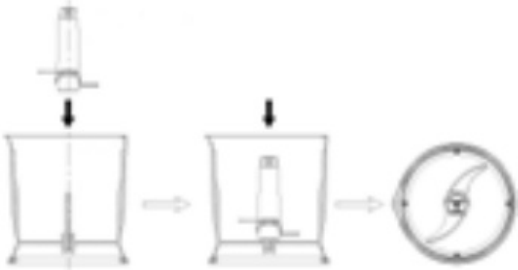
MINCER



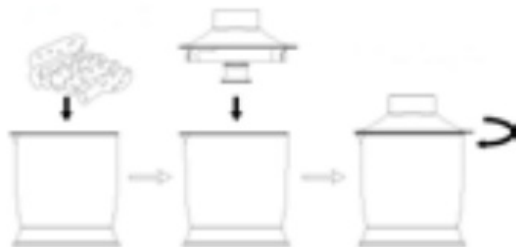
Attention: the blade of the mincer is very sharp. Be careful when assembling, emptying the bowl and cleaning.

The mincer is suitable for mincing or grinding meat, cheese, onions, herbs, garlic, carrots, nuts, etc.

Attention: do not grind hard ingredients such as ice cubes



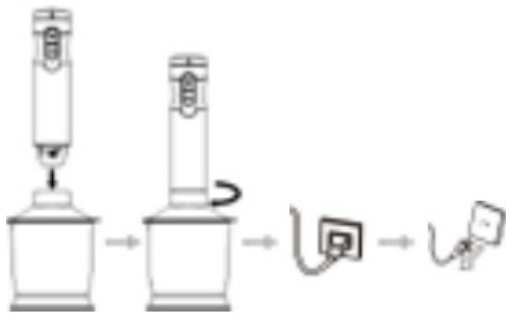
- Place the mincer on a flat surface.
- Place the blade correctly on the shaft of the mincer. **Be very careful, the blade is very sharp.**
- Place the ingredients in the mincer.
- Place the cover on the mincer and turn it clockwise until it snaps tight.
- Take the motor unit and turn it clockwise to attach it to the mincer's cover.
- Insert the plug in the socket.
- Press the on/off button for position I or II.
- While mincing, hold the motor unit with one hand and the mincer with the other hand.



Caution: do not switch on the mincer constantly, this could cause problems with the motor. Preferably use the mincer one minute each time and then allow the motor unit to cool down for one or two minutes.

- When you let go of the button, the mincer will stop. Wait until the blade stops rotating, before you unscrew the cover with motor unit from the mincer.

Always remove the plug from the socket when you leave the appliance unsupervised and before you assemble, disassemble or clean the appliance. In order to remove the motor unit after use, unscrew it counter-clockwise from the cover.



CLEANING AND MAINTENANCE

Always remove the plug from the socket when you leave the appliance unsupervised and before you assemble, disassemble or clean the appliance. Unscrew the motor unit from the accessory that has been used.

- The outside of the motor unit and the coupling piece can be wiped with a lightly damp cloth.
- Clean the stick mixer foot and the mincer's cover under the tap, using warm flowing water. If necessary, use a mild washing-up liquid.
- The stick mixer foot should not be cleaned in the dishwasher.

Warning: be careful when washing up the stick mixer foot and the mincer's blade. The blades are extremely sharp

- Do not use aggressive cleaning agents. These could affect the materials.
- Never submerge the motor unit in water or other liquids.
- These accessories may be cleaned in the dishwasher:
 - whisk (without coupling piece)
 - mincer
 - mincer blade

RECYCLING



■ This symbol means that this product should not be disposed of with regular household waste (2012/19/EU). Observe the rules that apply in your country for the separated collection of electric and electronic products. Correct disposal of the product prevents negative consequences for the environment and for public health. The packaging material of this product can be recycled for 100%. Please dispose of the packaging material separately.

ORDERING ACCESSORIES

Go to www.tomado.com/support to purchase accessories or spare parts.

WARRANTY CONDITIONS

A 24 month warranty is provided for this product. Your warranty is valid if the product has been used in accordance with the user instructions and for the purpose for which it was made. Also the original proof of purchase must be submitted, stating the date of purchase, the name of the retailer and the item number of the product. For extensive warranty information you are referred to our website: www.tomado.com/support

Tomado Electric Appliances

Postbus 159

6920 AD Duiven

The Netherlands



support@tomado.com



www.tomado.com



FSC

www.fsc.org

MIX

Paper from responsible sources

FSC® C152077



TOMADO®

Documents / Resources

	<p>TOMADO TSB9001B Stick Mixer Set [pdf] Instruction Manual TSB9001B Stick Mixer Set, TSB9001B, Stick Mixer Set, Mixer Set</p>
--	--

References

- [T Klantenservice](#)
- [User Manual](#)

[Manuals+](#), [Privacy Policy](#)