

## Contents [ [hide](#) ]

- [1 Tokai Rika K58U0 Smart LF Oscillator with Receiver](#)
- [2 Key Features](#)
- [3 PRODUCT OVERVIEW](#)
- [4 Product Usage Instructions](#)
- [5 FAQ](#)
- [6 Documents / Resources](#)
  - [6.1 References](#)

# TOKAI RIKA

## Tokai Rika K58U0 Smart LF Oscillator with Receiver



## Product Specifications

- **Model:** K58U0
- **FCC ID:** MOZK58U0
- **Usage:** Smart LF Oscillator with Receiver
- **Compliance:** FCC Part 15
- **RF Energy Levels:** Very low

## Key Features

- **Model:** K58U0
- **FCC ID:** MOZK58U0
- **Functionality:** Operates as a Smart Low-Frequency (LF) Oscillator with an integrated receiver
- **Frequency Bands:**
  - 125 kHz (LF) for proximity detection and key authentication
  - 433.92 MHz (RF) for communication with the key fob
- **Compliance:** Meets FCC Part 15 regulations, ensuring minimal interference and safe operation
- **RF Energy:** Emits very low levels of radio frequency energy, suitable for continuous use in vehicles

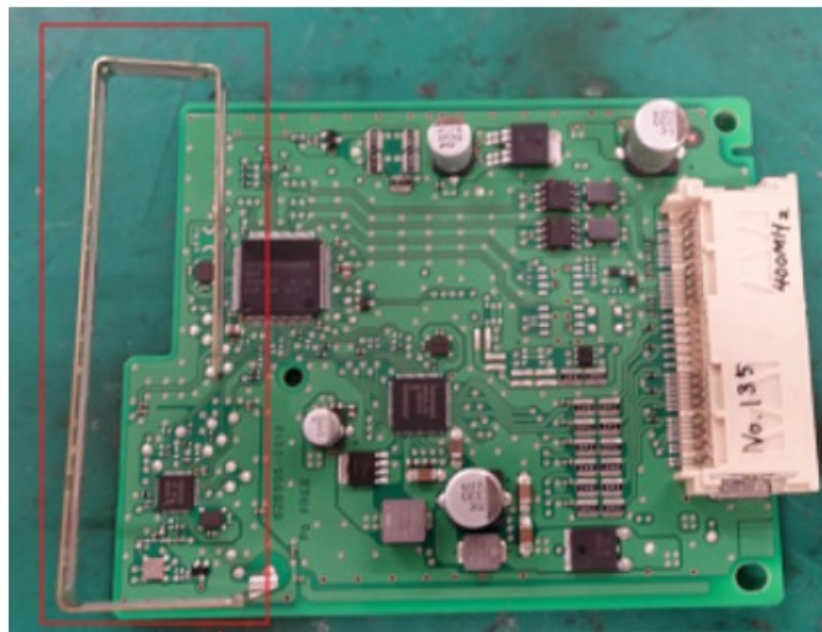
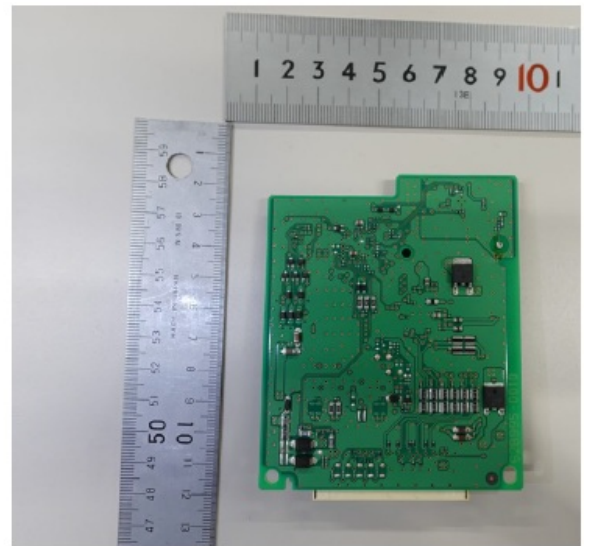
## PRODUCT OVERVIEW

### Printed Circuit Board

Front



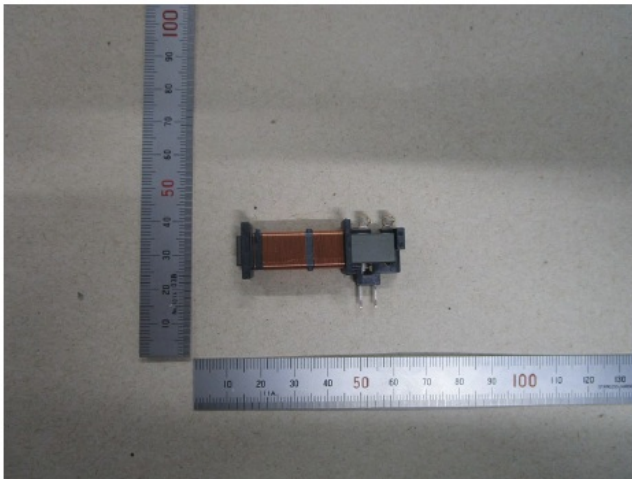
Rear View



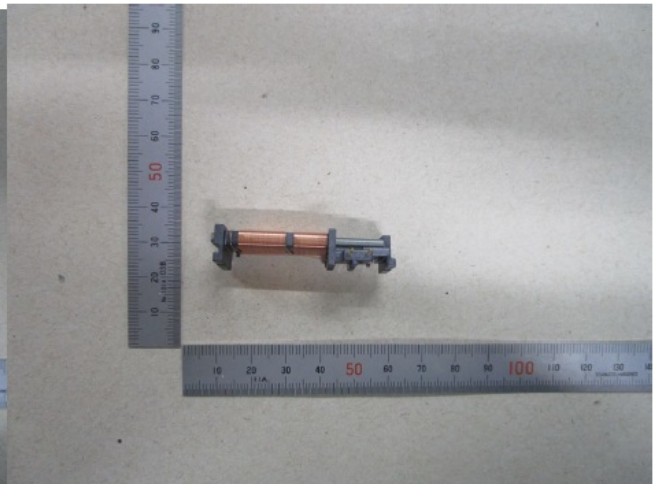
Receiver Antenna

Internal

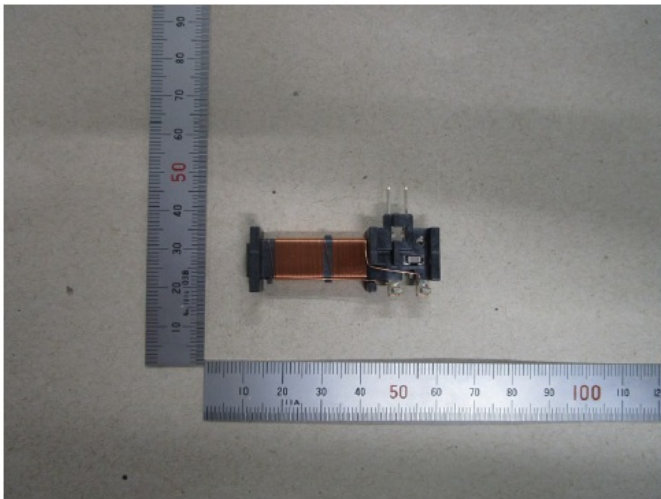
**Top View**



**Front View**



**Bottom View**



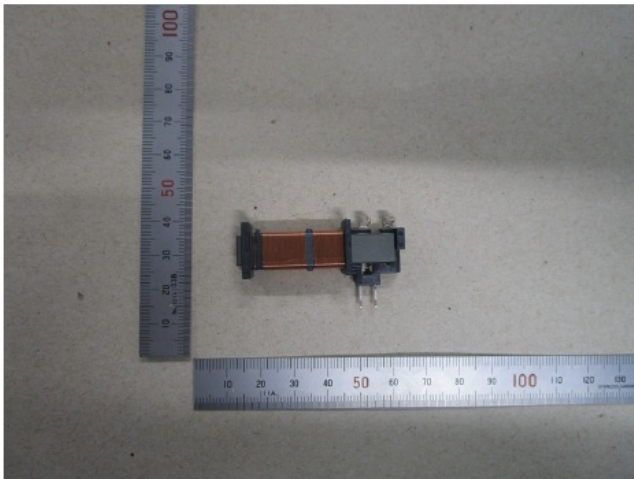
**Rear View**



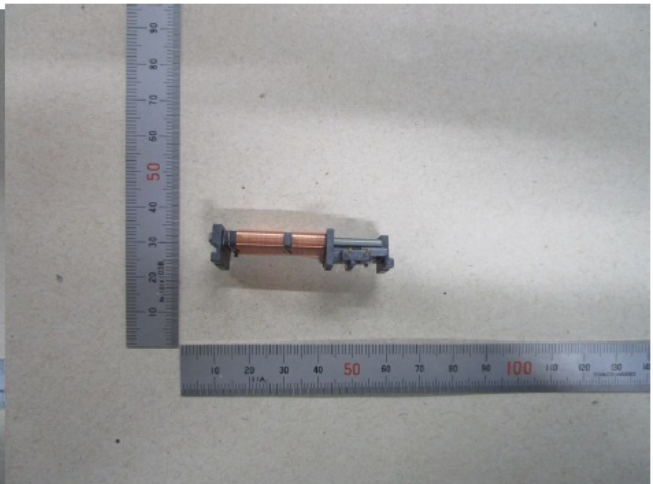
**Internal**



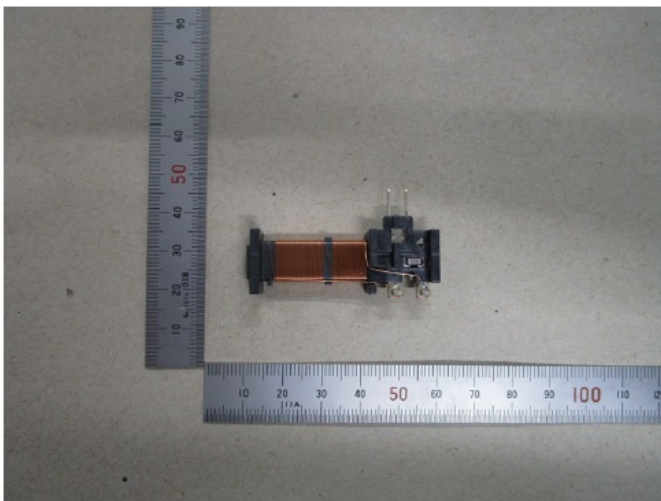
**Top View**



**Front View**



**Bottom View**

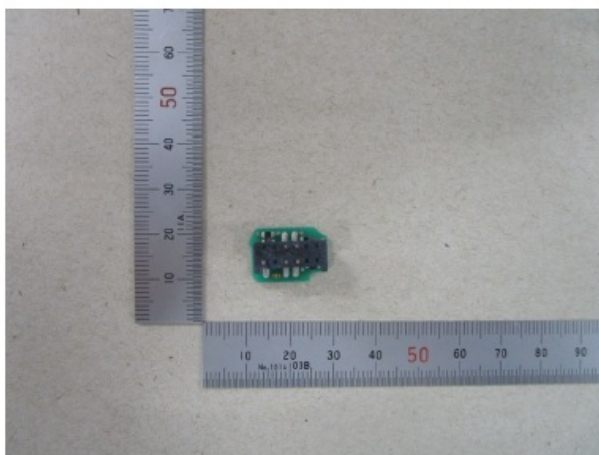


**Rear View**



## **Printed Circuit Board**

**Front View**



**Rear View**



## **Product Usage Instructions**

### **Installation:**

1. Ensure the device is securely installed in the designated location within the vehicle.
2. Connect the device according to the vehicle's user manual instructions.

**Operation:**

1. Ensure the device is powered on and functioning properly.
2. Follow the vehicle's user manual instructions on how to operate the device.
3. Avoid co-locating or operating this device near other antennas or transmitters.

**Maintenance:**

1. Regularly check the device for any physical damage.
2. Keep the device clean and free from dust or debris.
3. Refer to professional service personnel for any repairs or maintenance needs.

Since this device is always used with vehicle, it is not sold to general end users separately. The following statements must be described on the user manual of the vehicle;

**For vehicles sold in the U.S.A.:**

**FCC ID:** MOZK58U0

This device complies with part 15 of the FCC Rules.

**Operation is subject to the following two conditions:**

1. This device may not cause harmful interference, and
2. This device must accept any interference received, including interference that may cause undesired operation.

This transmitter must not be co-located or operated in conjunction with any other antenna or transmitter. This equipment complies with FCC radiation exposure limits set forth for an uncontrolled environment and meets the FCC radio frequency (RF) Exposure Guidelines as this equipment has very low levels of RF energy. Changes or modifications not expressly approved by the party responsible for compliance could void

the user’s authority to operate the equipment.

FAQ


**Q: Can this device be used outside of the U.S.A.?**

A: This device is specifically designed for use in vehicles sold in the U.S.A. Usage outside of the U.S.A. may not be compliant with local regulations.

**Q: What should I do if the device is not functioning correctly?**

A: If you encounter any issues with the device, refer to the vehicle’s user manual for troubleshooting steps. If problems persist, contact authorized service personnel for assistance.

Documents / Resources

	<a href="#">Tokai Rika K58U0 Smart LF Oscillator with Receiver [pdf]</a> User Guide K58U0, MOZK58U0, K58U0 Smart LF Oscillator with Receiver, K58U0, Smart LF Oscillator with Receiver, Oscillator with Receiver, Receiver
--	---

References

- [User Manual](#)

■ Tokai

Rika

◆ K58U0, K58U0 Smart LF Oscillator with Receiver, MOZK58U0, Oscillator with Receiver, Receiver, Smart LF Oscillator with Receiver, Tokai Rika



Leave a comment

Your email address will not be published. Required fields are marked \*

Comment \*

Name

Email

Website

☐ Save my name, email, and website in this browser for the next time I comment.

Post Comment

Search:

e.g. whirlpool wrf535swhz

Search

[Manuals+](#) | [Upload](#) | [Deep Search](#) | [Privacy Policy](#) | [@manuals.plus](#) | [YouTube](#)

This website is an independent publication and is neither affiliated with nor endorsed by any of the trademark owners. The "Bluetooth®" word mark and logos are registered trademarks owned by Bluetooth SIG, Inc. The "Wi-Fi®" word mark and logos are registered trademarks owned by the Wi-Fi Alliance. Any use of these marks on this website does not imply any affiliation with or endorsement.