

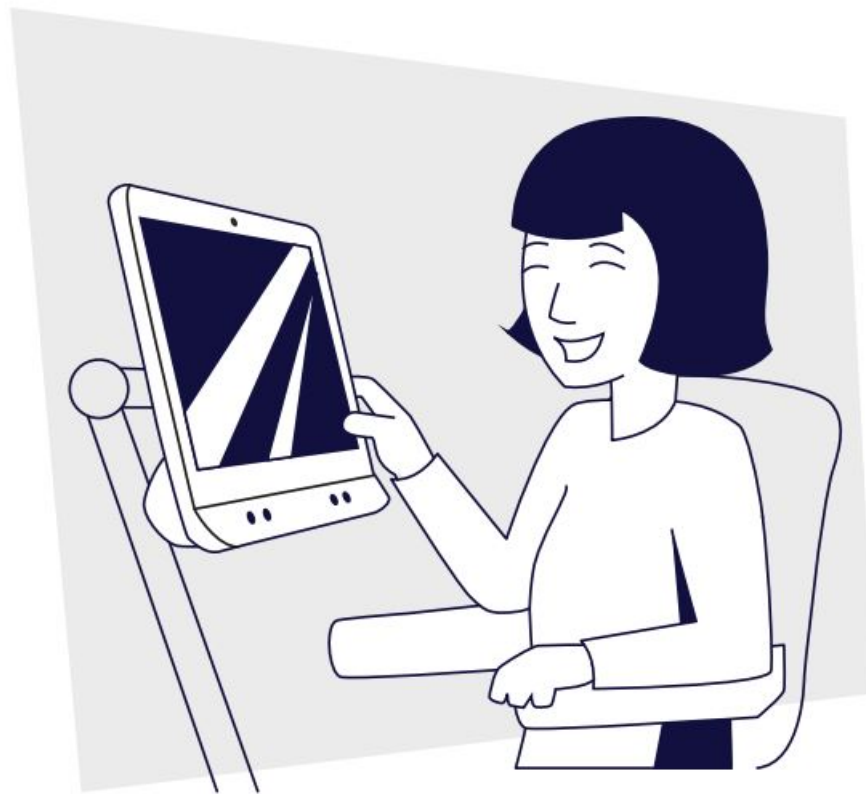


tobii dynavox TD I-13 Light Fast Durable Speech Generating Device User Guide

[Home](#) » [tobii dynavox](#) » tobii dynavox TD I-13 Light Fast Durable Speech Generating Device User Guide 

tobii dynavox TD I-13 Light Fast Durable
Speech Generating Device User Guide

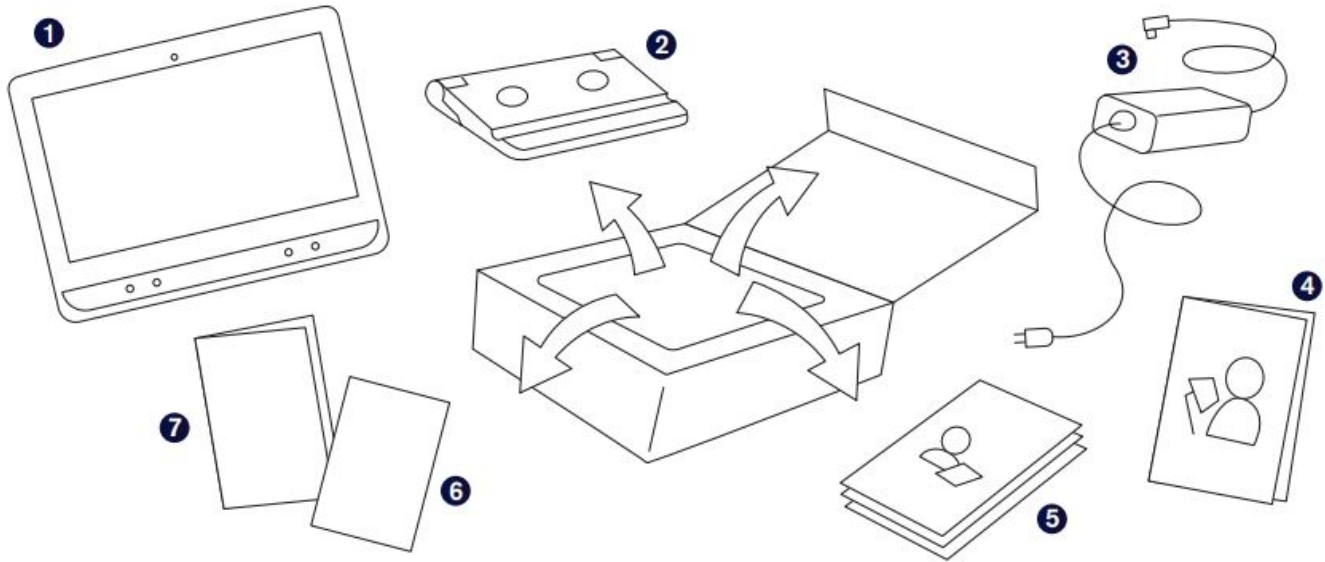
Getting Started Guide



Contents

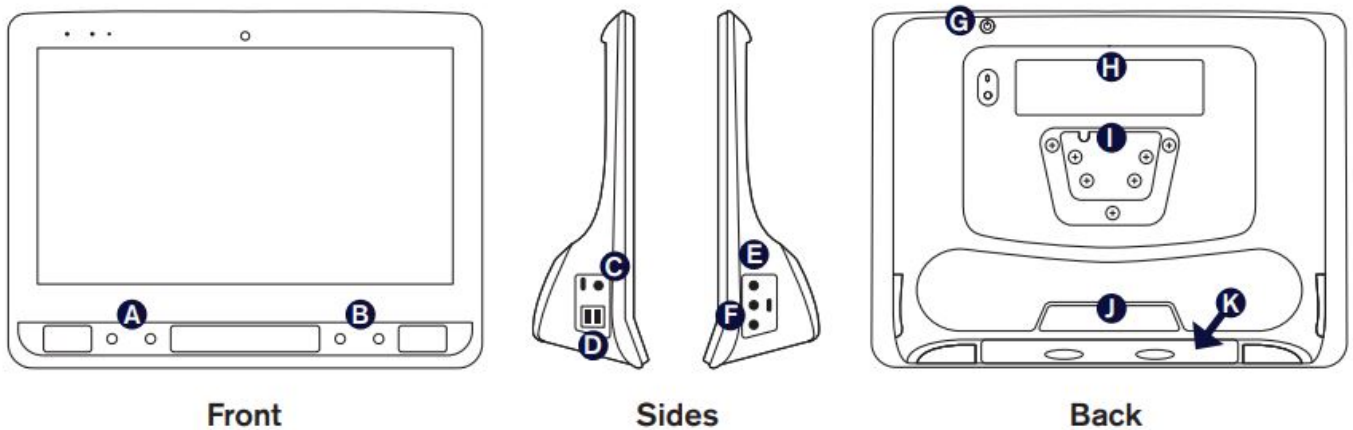
- 1 What's in the Box
- 2 Getting to Know Your Device
- 3 Step 1: Initial Setup
- 4 Step 2: Configure Communication Software
- 5 Step 3: Mount and Position
- 6 Step 4: Calibrate
- 7 Step 5: Learn, Practice, and Troubleshoot
- 8 Additional Resources
- 9 Documents / Resources
 - 9.1 References

What's in the Box



1. TD I-Series Device
2. Adjustable Base
3. Power Cable
4. Getting Started Guide
5. Training Cards
6. Safety & Compliance Booklet
7. Document Folder

Getting to Know Your Device



- A Adaptive Buttons
- B Volume Buttons
- C Power Connector
- D USB 3.0 Connectors
- E Head Phone Jack
- F Switch Ports 1 and 2
- G Power Button
- H Partner Window

- I Mounting Plate*
- J IR Receiver/Transmitter
- K Battery Access**

*If using a Daessy Mount, you will need a Conversion Plate.

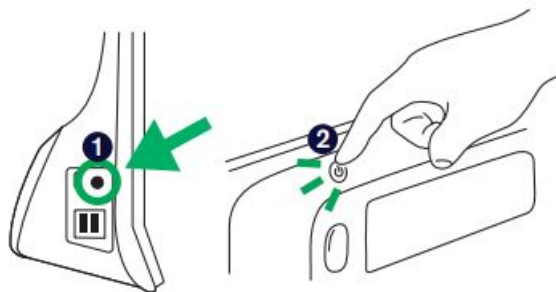
**Battery is located at the bottom of the device.

Follow the steps in this guide to set up and start using your device.

Step 1: Initial Setup

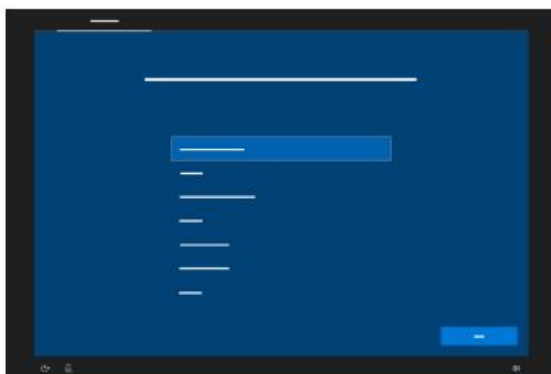
Plug in and Start the Device

1. Connect the power cable to the device and plug in to an outlet.
2. Press the Power button.



Setup When you turn on your device, you will see one of two screens. If your device has not been pre-configured, you will be prompted to complete the Windows Setup process first.

Windows Setup



Start Up Wizard: Pick Your App



While this process does not require a Microsoft account, we recommend that you connect to or create a user's account and not a caregiver's account.

Choose which app to automatically launch when the device powers on.

Step 2: Configure Communication Software

Follow the prompts in your chosen software to create a new user or restore an existing user file.



TD Snap
Symbol-Supported Communicators




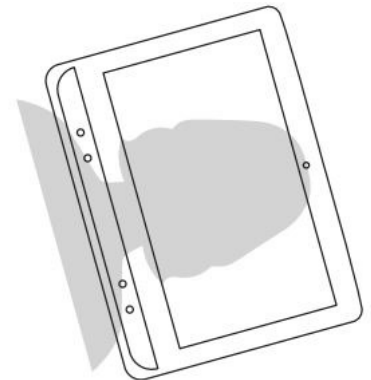
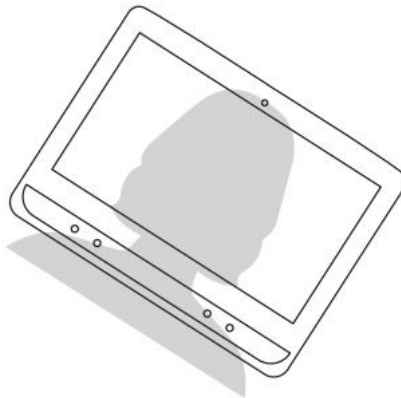
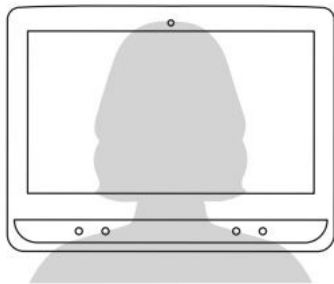
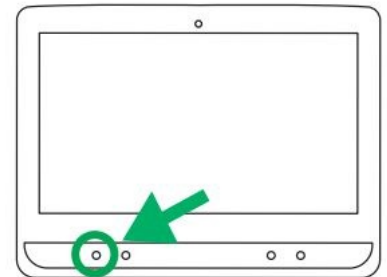
Communicator 5
Text-Supported Communicators

Note Do not perform calibration for Eye Gaze (Gaze Interaction) until the device has been mounted and the individual is positioned comfortably. See Step 3 for mounting and positioning tips.

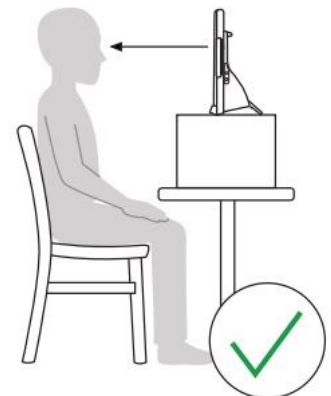
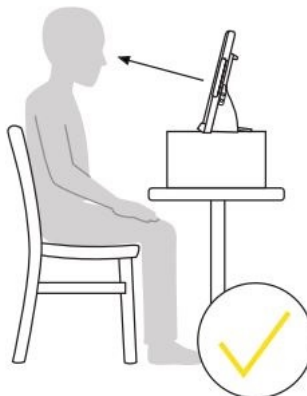
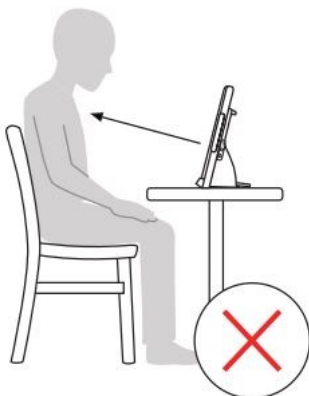
Step 3: Mount and Position

Prepare the user to start using eye tracking by positioning them comfortably. If they use glasses, make sure that they are wearing them and that the lenses are clean.

To launch Track Status, touch the Adaptive button  on the front of the device. Track Status helps you find the optimal distance and position for the device.



Place the I-Series device on your mounting system or on the adjustable base on a stable surface in front of the user at, or slightly below, their eye level. If their head is tilted left or right, tilt the I-Series device to match. It is important that the angle of the screen surface match the angle of the user's face. Most users, when seated at a table or desk, will need to have the I-Series device positioned higher than the table surface.



You may need to refine the position of the device during the Calibrate steps on the next page. Always adjust the position of the device to suit the user, not the other way around.

**Note**

A mounting system is the best option for precise device positioning that is easy to adjust throughout the day. Several mounting options are available, including floor mounts, desk mounts, and wheelchair mounts. Visit [TobiiDynavox.com](https://www.tobii.com/dynavox) or contact your local Tobii Dynavox partner.

Step 4: Calibrate

A perfect calibration score is not required to use eye tracking effectively. When you are just getting started, calibrate once without worrying too much about the scores and then let the individual practice using eye tracking. You can always revisit calibration later.

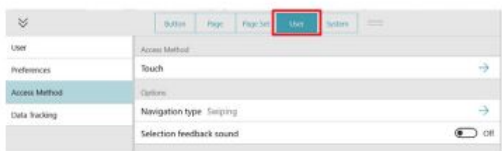
Note You don't need to calibrate each time you use the device.

To calibrate TD Snap:

- 1 Select the **Edit** button.

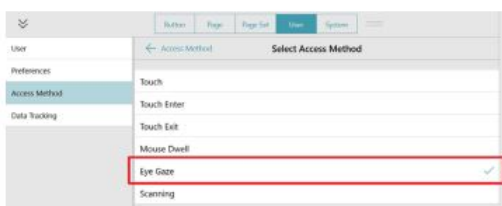


- 2 Select **User**.

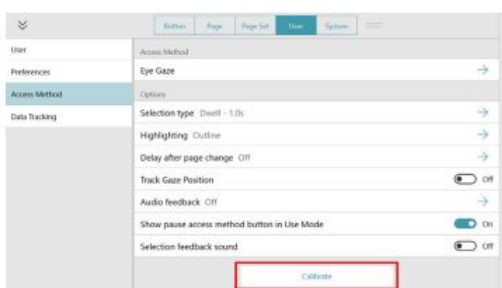


- 3 Select **Access Method**.

- 4 Select **Eye Gaze**.



- 5 Scroll down and select **Calibrate**.



To calibrate Communicator 5:

- 1 Open the **Quick Menu**.

To open the Quick Menu, press Ctrl + M on your keyboard, right click with your mouse, or touch, hold, then release anywhere on the screen.



- 2 Select **Advanced Settings**.



- 3 Select **Input Method** and confirm Gaze Interaction is selected.



- 4 Select **Gaze Interaction Settings**.

Here you can change the activation type between dwell and switch, change calibration profiles, and start a new calibration.



Step 5: Learn, Practice, and Troubleshoot

Your TD I-Series device is now ready to use! Feel free to start exploring your device and apps. When you are ready to learn more, check out the TD Snap Training Cards or Communicator 5 Training Cards. The training cards teach you how to use the main features of your communication software, grow your AAC communication skills, and troubleshoot issues.

TD Snap Training Cards



grco.de/bdSEpR



grco.de/bdqiVT

myTobiiDynavox.com



Your free myTobiiDynavox.com account gives you access to numerous benefits including cloud storage for backups, page set syncing and sharing, lesson plans and more!

Joining myTobiiDynavox will allow you to do the following:

- Safely back up your system
- Download free tools and resources
- Review free Core First lesson plans
- Learn about available updates
- Access Tech Support and FAQs
- Share page sets and Page Bundles

myTobiiDynavox



myTobiiDynavox.com

Additional Resources



Tobii Dynavox
Learning Hub
learn.tobiidynavox.com



TD Facebook
Community
qrco.de/TDFB



I-Series Product
Support
qrco.de/bbBdN3




I-Series User's
Manual
qrco.de/ISManual

UK Technical Support 0114 481 0011 support.uk@tobiidynavox.com

#12007970 Tobii Dynavox I-Series Getting Started Guide v.1.3 – en-UK

Documents / Resources

<p>tobii dynamox TD I-13 and TD I-16 Getting Started Guide</p> 	<p>tobii dynamox TD I-13 Light Fast Durable Speech Generating Device [pdf] User Guide TD I-13, TD I-16, TD I-13 Light Fast Durable Speech Generating Device, Light Fast Durable Speech Generating Device, Durable Speech Generating Device, Speech Generating Device, Generating Device</p>
--	---

References

- [tobiidynavox](#)
- [myTobiiDynavox](#)
- [I-Series \(I-13 I-16\) Product Support - Tobii Dynavox US](#)
- [qrco.de/bdqiVT](#)
- [qrco.de/bdSEpR](#)
- [I-Series \(I-13 I-16\) Product Support - Tobii Dynavox Global](#)
- [Tobii Dynavox Global: Assistive technology for communication](#)