



# TOBENONE UDS016D Triple Display USB-C Docking Station User Manual

[Home](#) » [TOBENONE](#) » TOBENONE UDS016D Triple Display USB-C Docking Station User Manual 



# TOBENONE

## UDS016D Triple Display USB-C Docking Station User Manual

### Contents

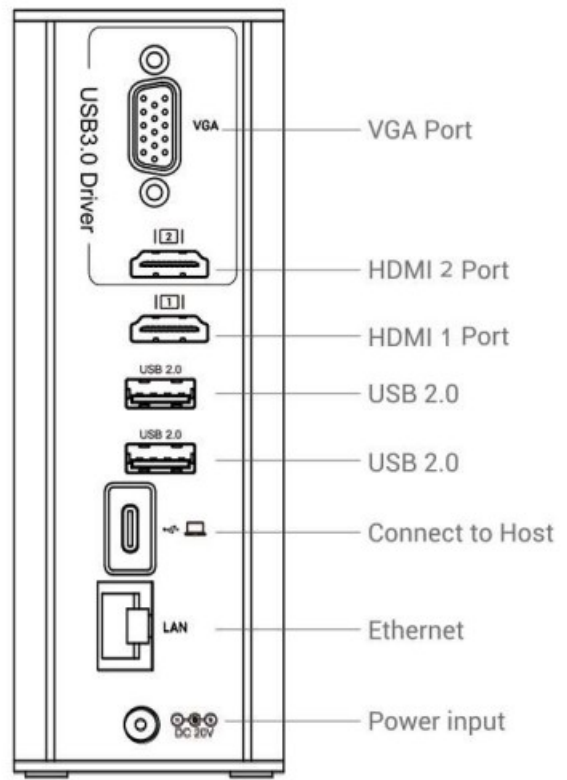
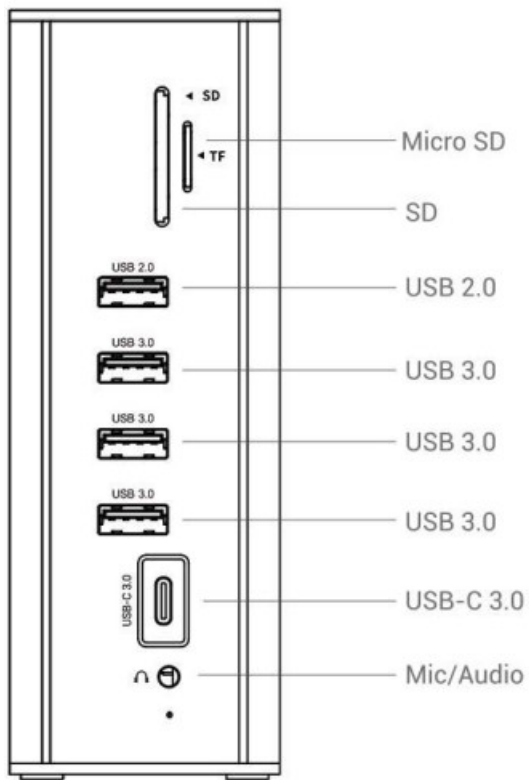
- [1 UDS016D Triple Display USB-C Docking Station](#)
- [2 Specifications](#)
- [3 Package Contents](#)
- [4 How to use](#)
- [5 Please Note:](#)
- [6 Documents / Resources](#)

## UDS016D Triple Display USB-C Docking Station

Thank you for purchasing our Multiport Docking Station

To use this Docking Station, the host USB-C port from your device must support DisplayPort Alt Mode and Power Delivery. Our UDS-016D Docking Station support MST(multi stream transport) for both Windows and macOS. It is easy to expand your USB C port to dual HDMI ports, VGA port, support 3 USB 3.0 and USB 2.0, RJ45 Ethernet, TF&SD card reader. If you need any assistance, please contact our support team with your product model number, order number via Email.

Get Support: [support@tobenone.com](mailto:support@tobenone.com)



## Specifications

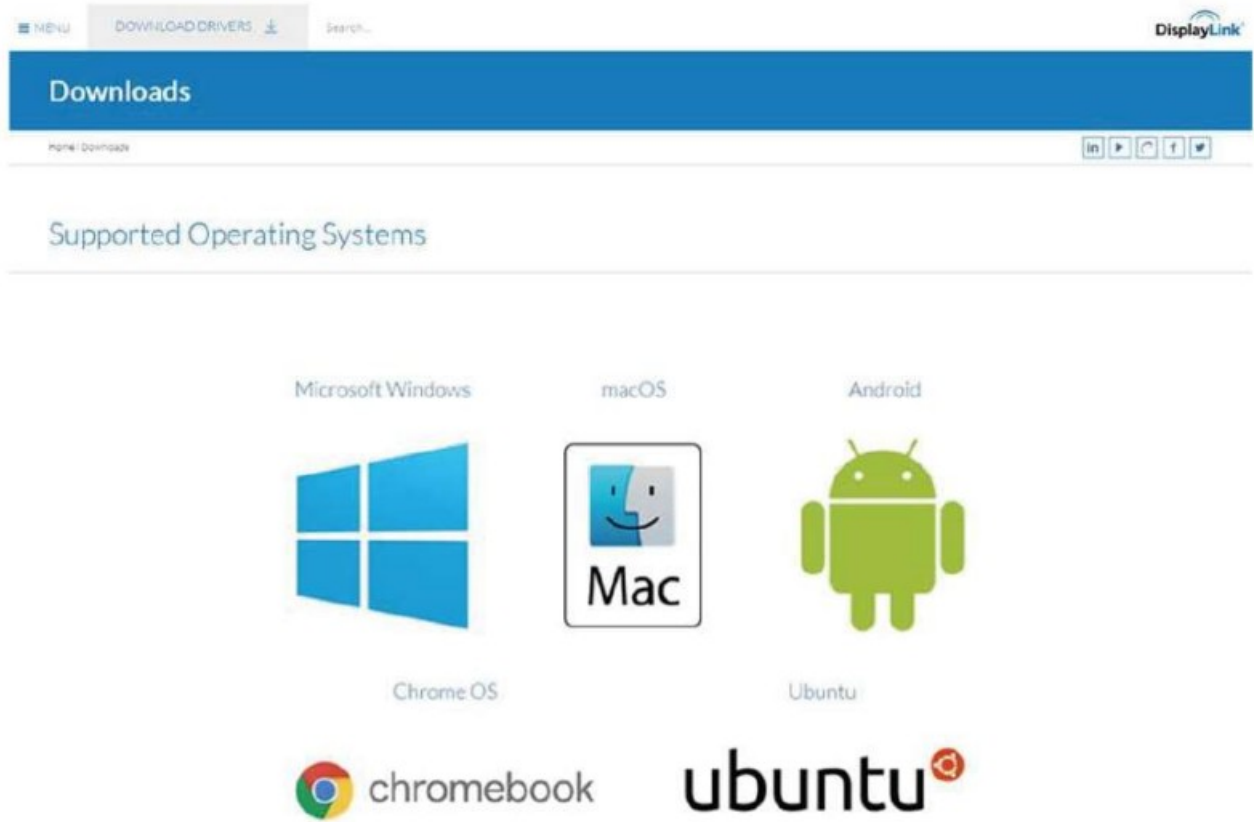
Product Model	UDS-016D
Interface	USB C Host USB-A 3.0 Portx3 USB-A 2.0 Portx3 USB-C 3.0 data transfer x1 HDMI 1x1 HDMI 2x1 VGA x1 Ethernet port (RJ45 port)x1 TF card slotx1 SD card slotx1 Audio/Mic 2 in 1x1 DC port(power input)x1
Connector	USB 3.1 Type-C connector
HDMI 1 output port	Up to 4K UHD ( 3840+*2160/60HZ ) work separately while source is DP1.4
VGA	1080P 60Hz
HDMI 2 output port	2650*1440/60HZ
Ethernet port(RJ-45 port)	Support 10/100/1000 BASE-TX Auto MDI/MDI-X. Data transfer: 1000Mbps
USB 3.0 Type-A port	Data transfer speed: up to 5Gbp/s
USB 2.0 Type-A port	Data transfer speed: up to 480Mbps for wireless receiver
SD/TF card slot	Supported memory card capacity: up to 256 GB Read/write speed: up to 104 MB/S SD/TF cards can't be used simultaneously
USB-C 3.0 data transfer port	Up to 5 Gb/s data speed & Maximum power output 5A/0.9A
Mic/Audio	Support Mic and Stereo Audio 2 in 1. Jack standard: CTIA
USB-C 3.0 port	Connect to the host laptop
DC port	Charge the laptop through the USB-C port, & Maximum support of 20V/3A and 55W.

## Package Contents

- USB C Docking Station
- USB-C to USB-C Cable
- Power Supply
- User Manual
- AC to DC Cable

## How to use

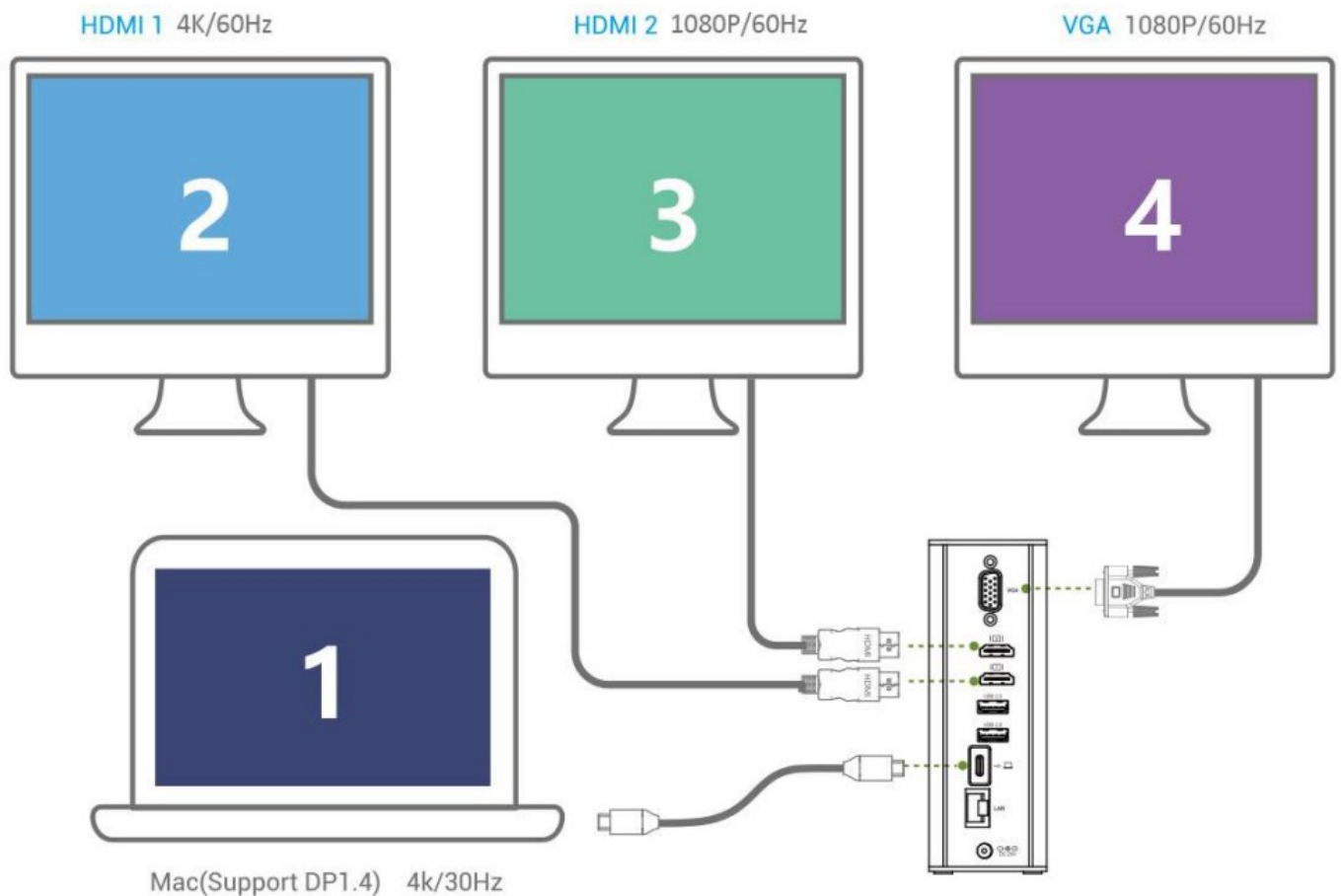
1. Please download and install the driver before use <http://www.displaylink.com/downloads>  
 Download driver from: [displaylink.com/downloads](http://www.displaylink.com/downloads)



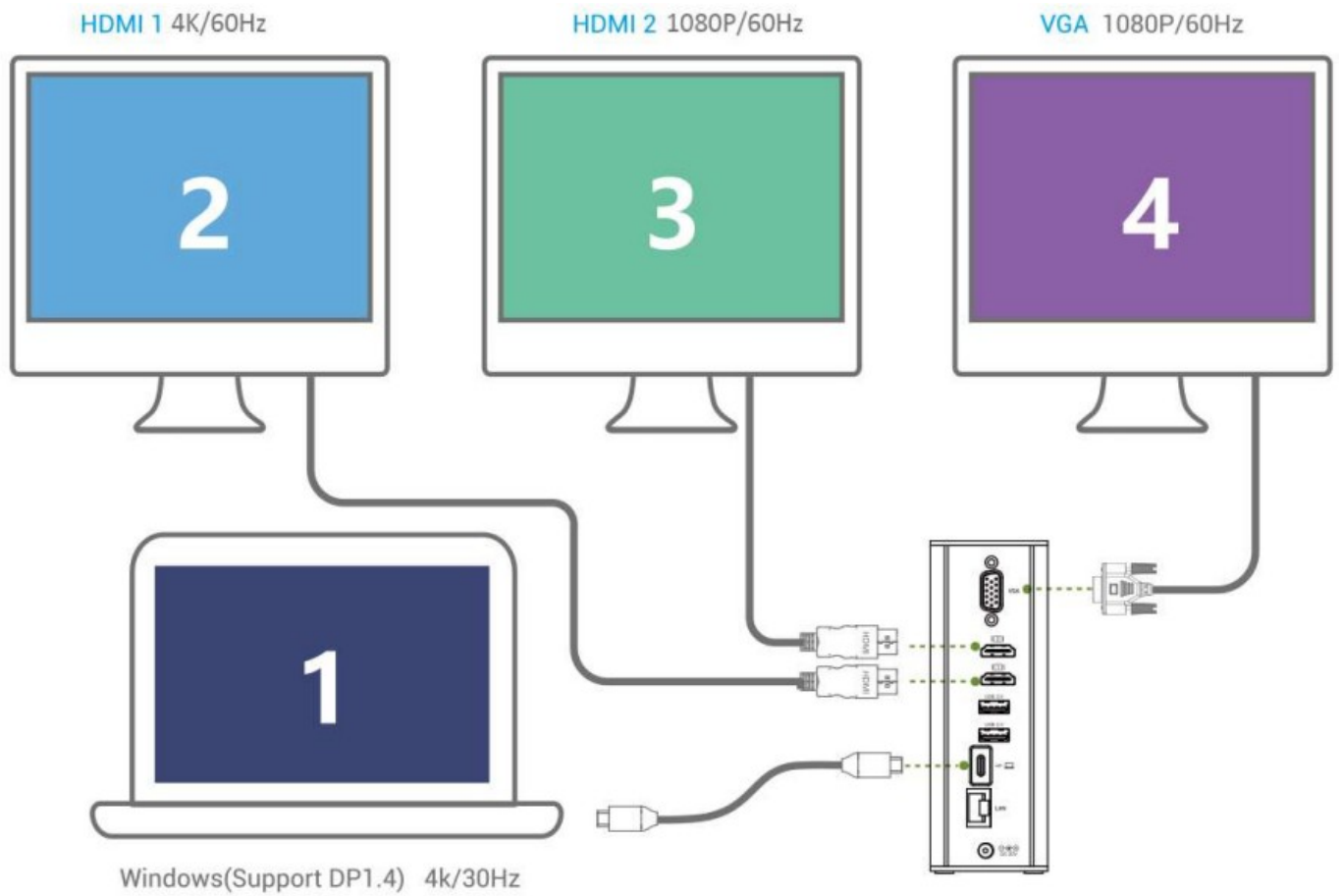
## 2. Set the Extend Mode and Mirror mode

### Extend Mode:

Mac: Setting: About This Mac>Display>Arrangement>Click Cancel Mirror Displays

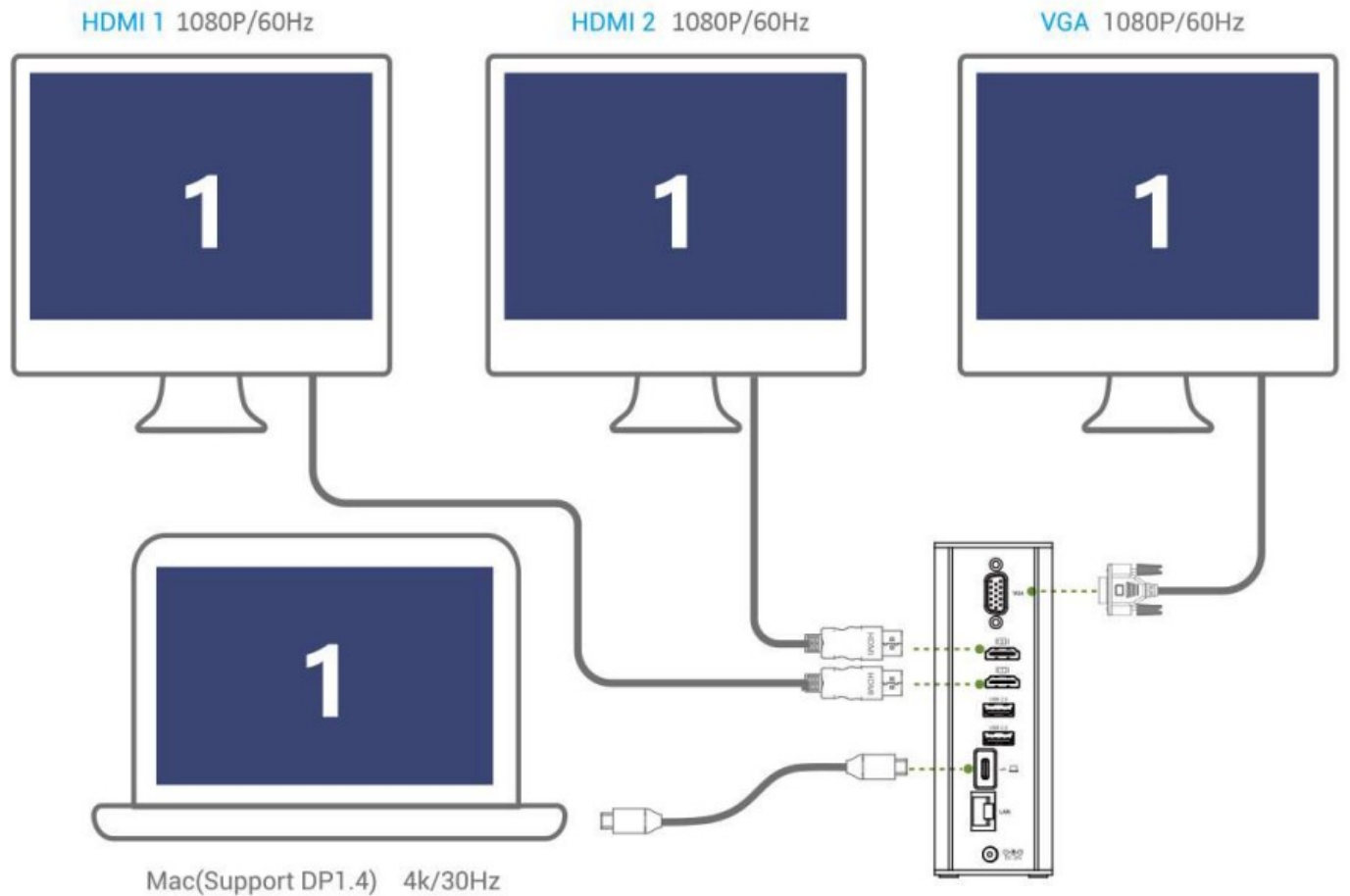


Windows: Please click Intel Graphics Settings for multi-display setting or hot key: Windows P



#### Mirror Mode:

Mac: Setting: About This Mac>Display>Arrangement>Mirror Displays

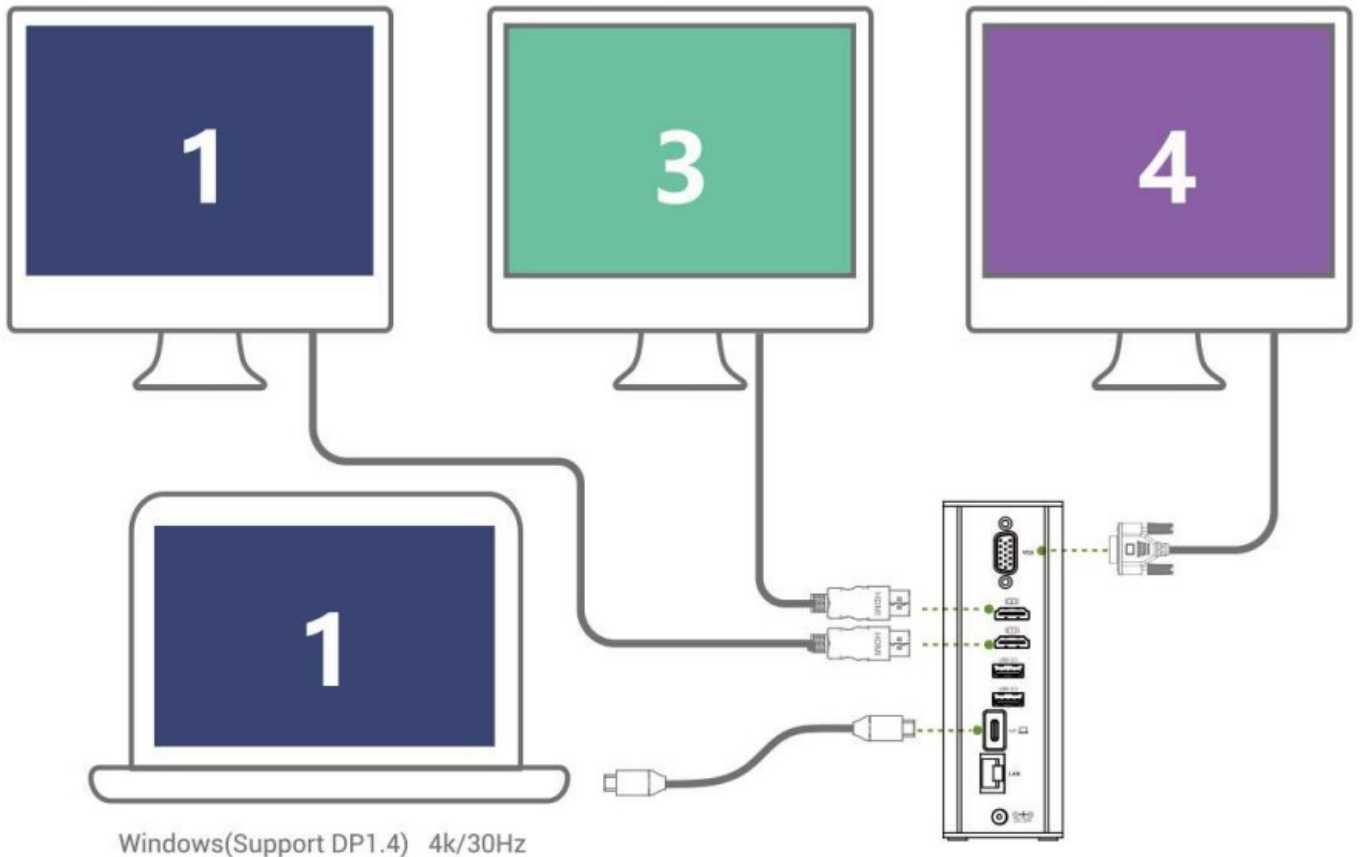


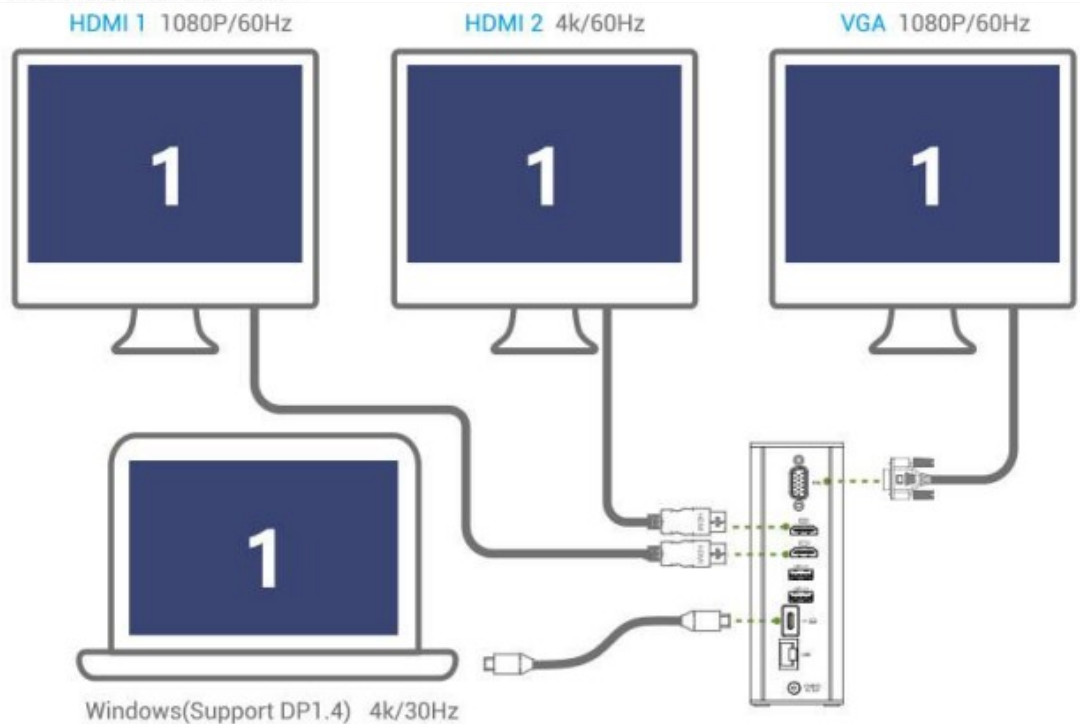
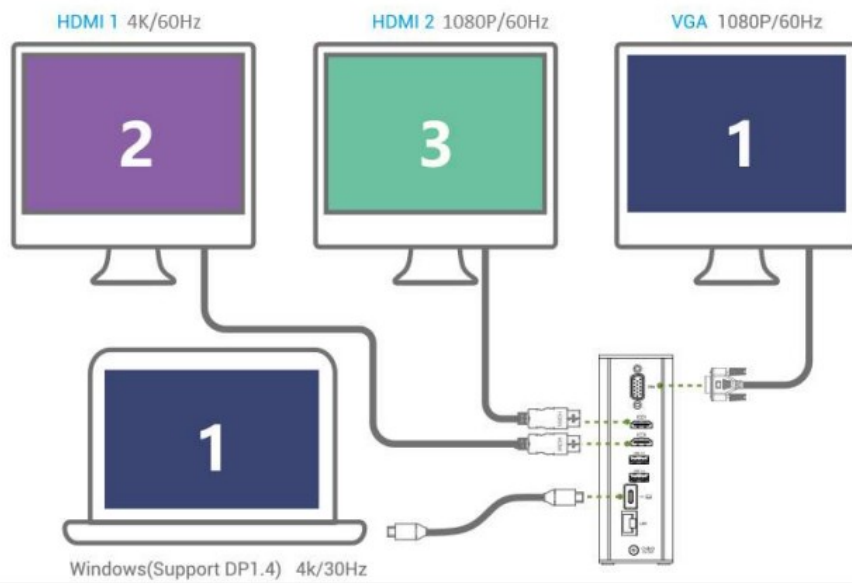
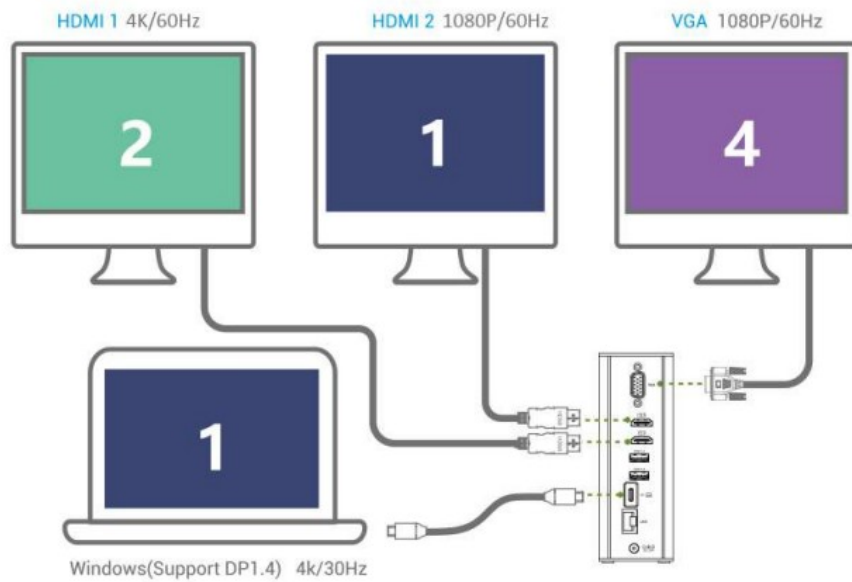
**Windows:** Windows laptop does not support three external monitors to mirror the laptop screen at the same time.

HDMI 1 1080P/60Hz

HDMI 2 1080P/60Hz

VGA 1080P/60Hz





**Compatible devices:** (Supporting Alt Mode and Power Delivery)

Including but not limited:

Apple: MacBook Pro 2016/2017/2018/2019/2020,

MacBook Air 2018/2019/2020,

Apple MacBook 2015/2016/2017/2018/2019/2020,

Acer: E5-575G

Asus: Q325UA, Zenbook Flip S , Zenbook 3 UX390UA,

eBook 3 UX490UA

Dell: XPS 12 9250, XPS 13 9350/9360/9370, XPS 15 9550/9560, Precision 5510/5520, Inspiron 7378/7389/7569, Latitude 5285/5580/E7370/E7480, Precision 5510/7510 Lenovo: Yoga 720 13" & Yoga 920, IdeaPad 720S,Mix 720,

1470/480/570, Thinkpad-X1, X270,

Razer: Blade (Late 2016), Blade Stealth (2015), Razer Blade Stealth (2017)

HP. Specter x360 13, Chromebook 13 G1, EliteBook x360 G2

Samsung: Chromebook Plus, Galaxy Tabor S,

Notebook 9 13.3"

Huawei: Mate Book X Pro

Surface book2

Google Chrome Book pixel (2016/2017)

### **Partially Compatible Devices:** (Supporting Alt Mode but not Power Delivery)

Asus: Zenbook UX430UA, Zen Book Pro UX501VW

Dell: Dell Alienware 13 R3, Alienware 15 R3, G7 15 Gaming 7588,

Latitude 5480, Precision 7520/7720, XPS 15 9570

HP. Specter 13 – v111dx, Specter 13.3

MSI:Ghost Pro-002, MSI GT62 Dominator Pro

Huawei: Mat eBook X

### **How to use the new Display Link Manager App?**

We recommend proceeding with following steps to install and use the new Display Link Manager App. They are to be followed once after installing the app.

1.1. First, uninstall the classic Display Link driver if you have it on your computer. Simply run the driver installer and select Uninstall.

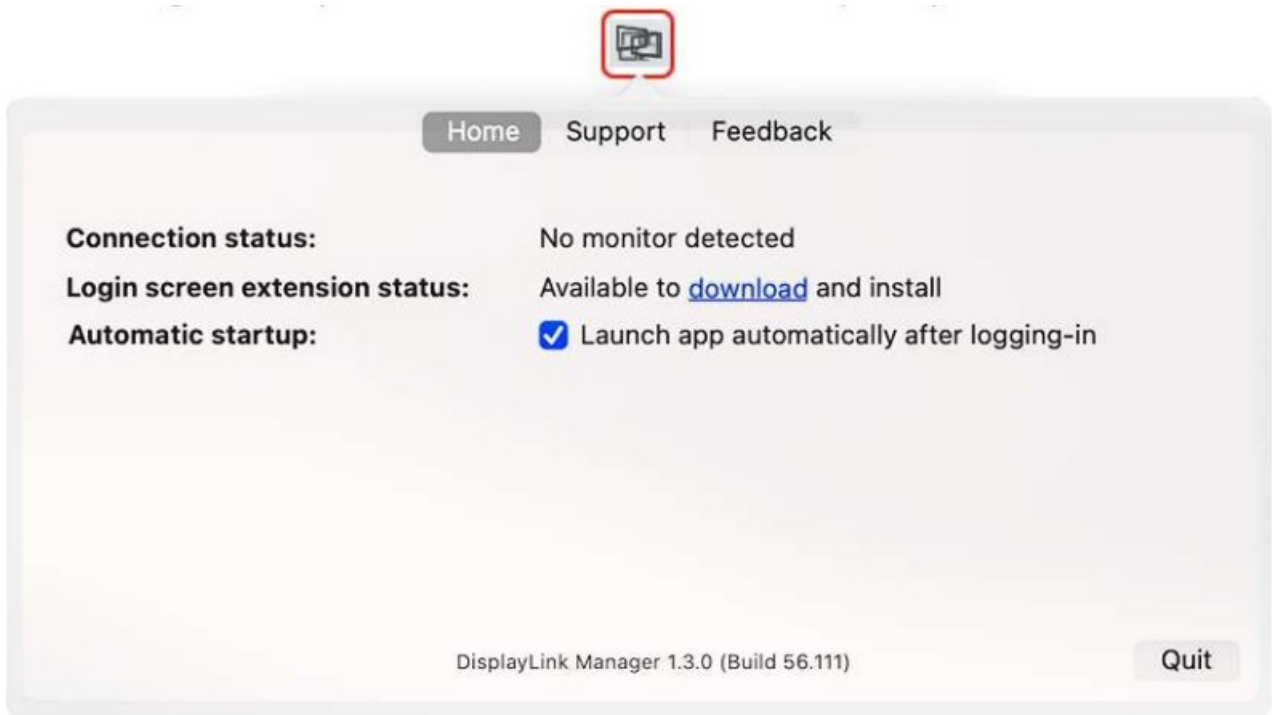
1.2. Download the Display Link Manager App and install it from the ZIP file

1.3. Navigate i n Finder to Applications and then open Display Link Manager

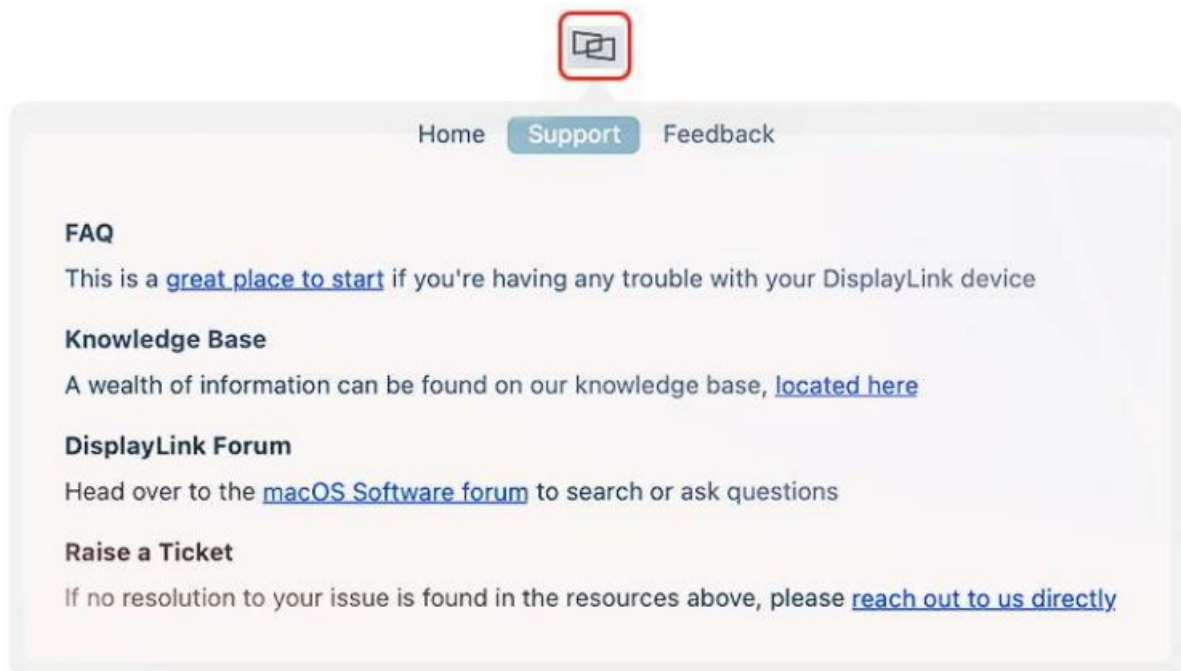


1.4. (Click the Display Link Manager App icon in the menu bar t o open the app. and you can confirm that the software has been installed and is running normally. Please select "Automatic startup" s o you can use the DS-

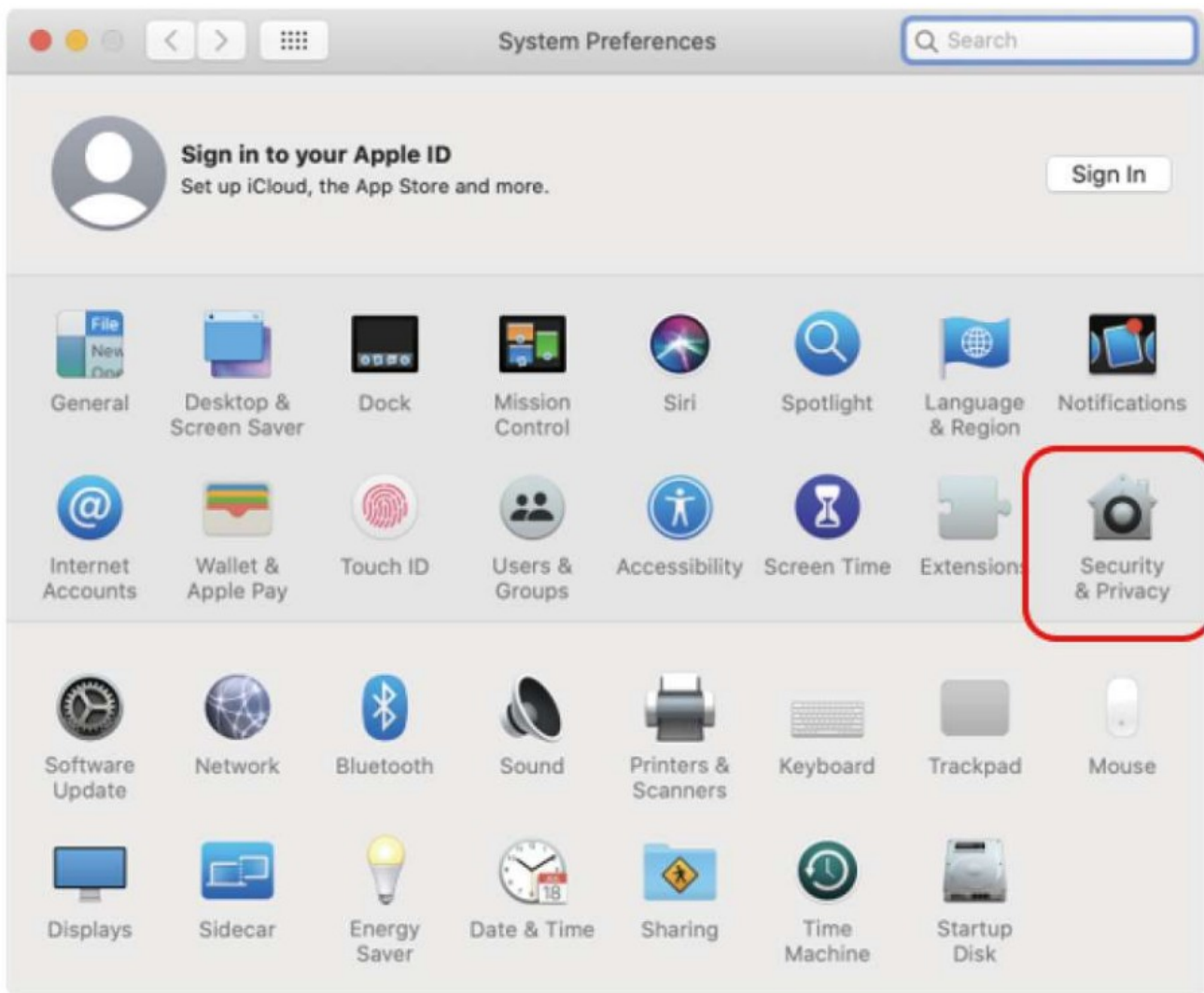
CO2 after logging in.



1.5. Also you can check the support page to check more details about the Display Link Manager App.

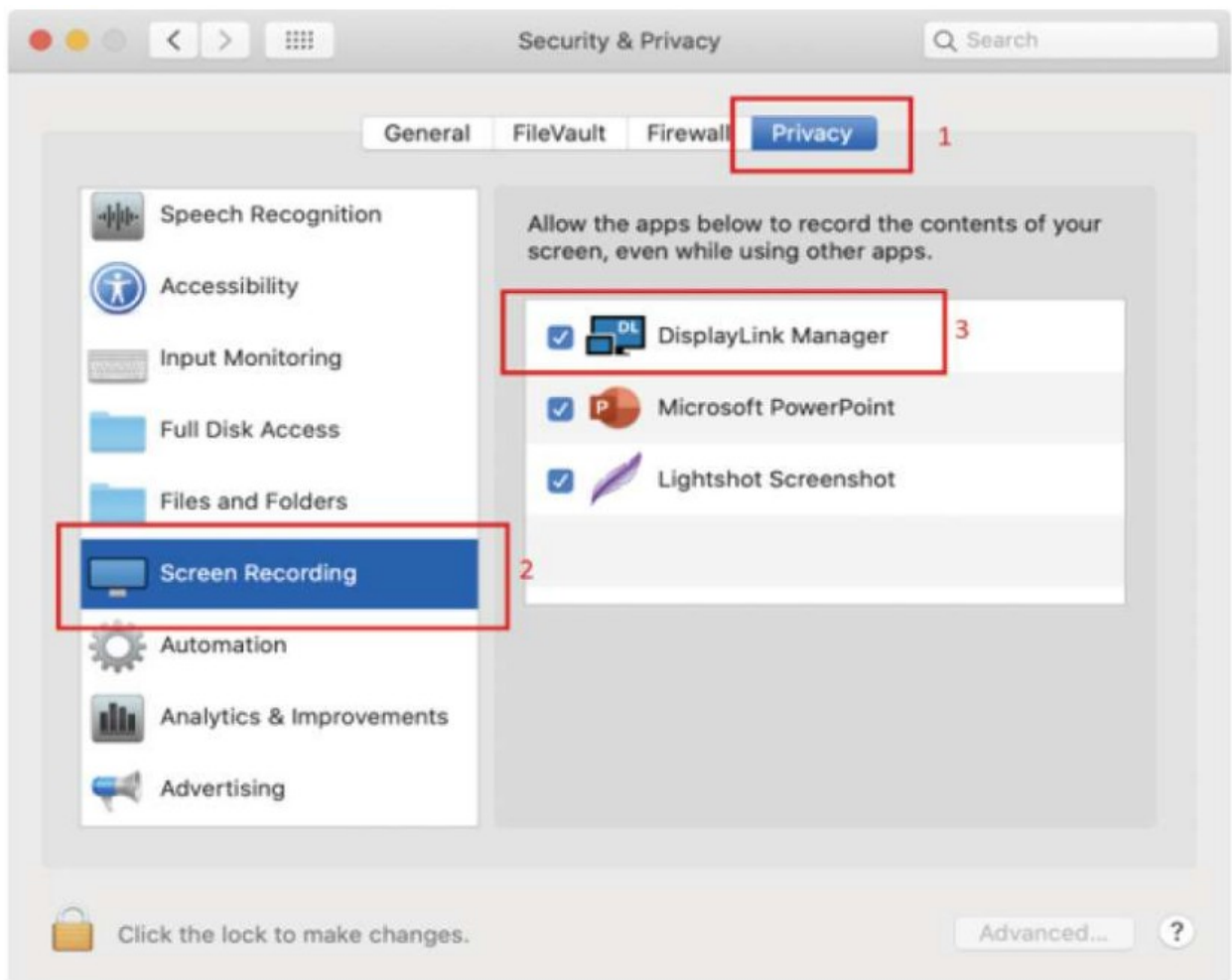


1.6. Now connect the peripheral with Display Link technology and navigate to your System Preferences to open Security & Privacy

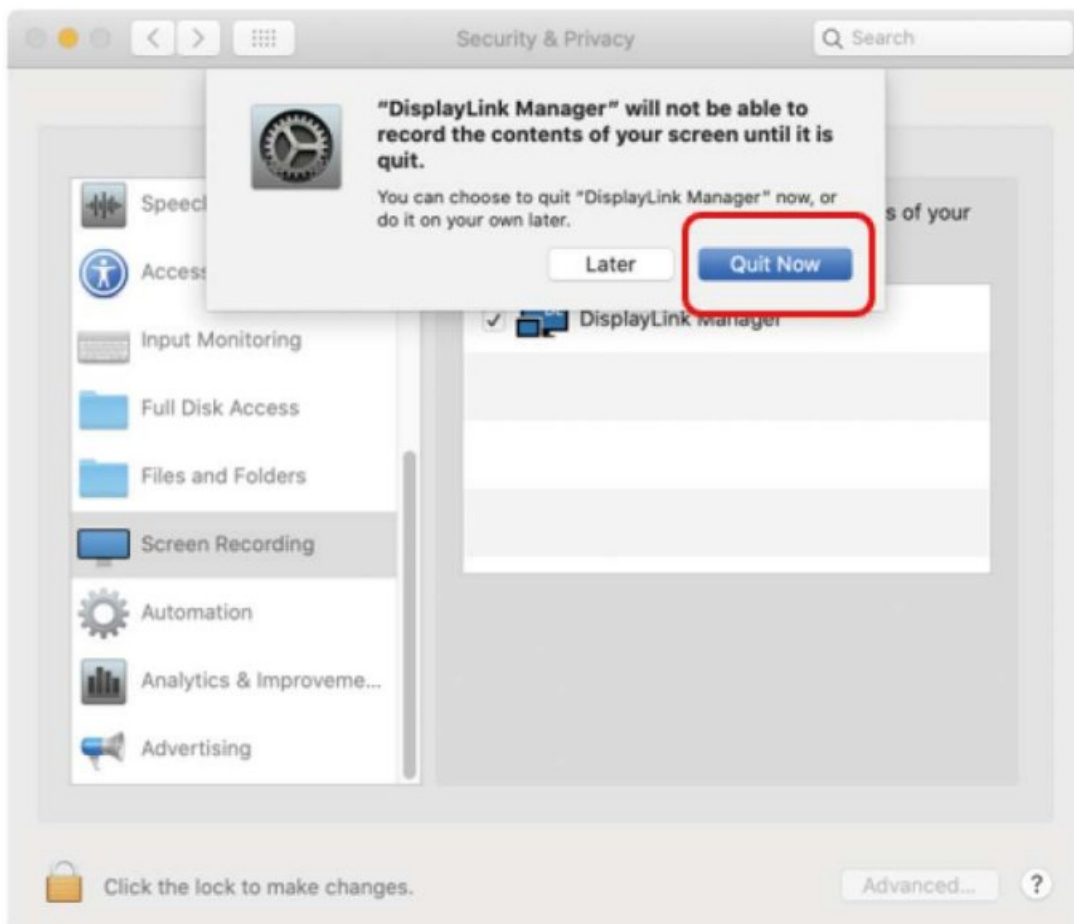


1.7. Enable “Screen Recording” to allow the Display Link Manager app to capture pixels and send them to your USB peripheral: Select the “Privacy” tab Navigate to “Screen Recording” in the list on the left Then tick the “Screen Recording” permission for Display Link Manager.

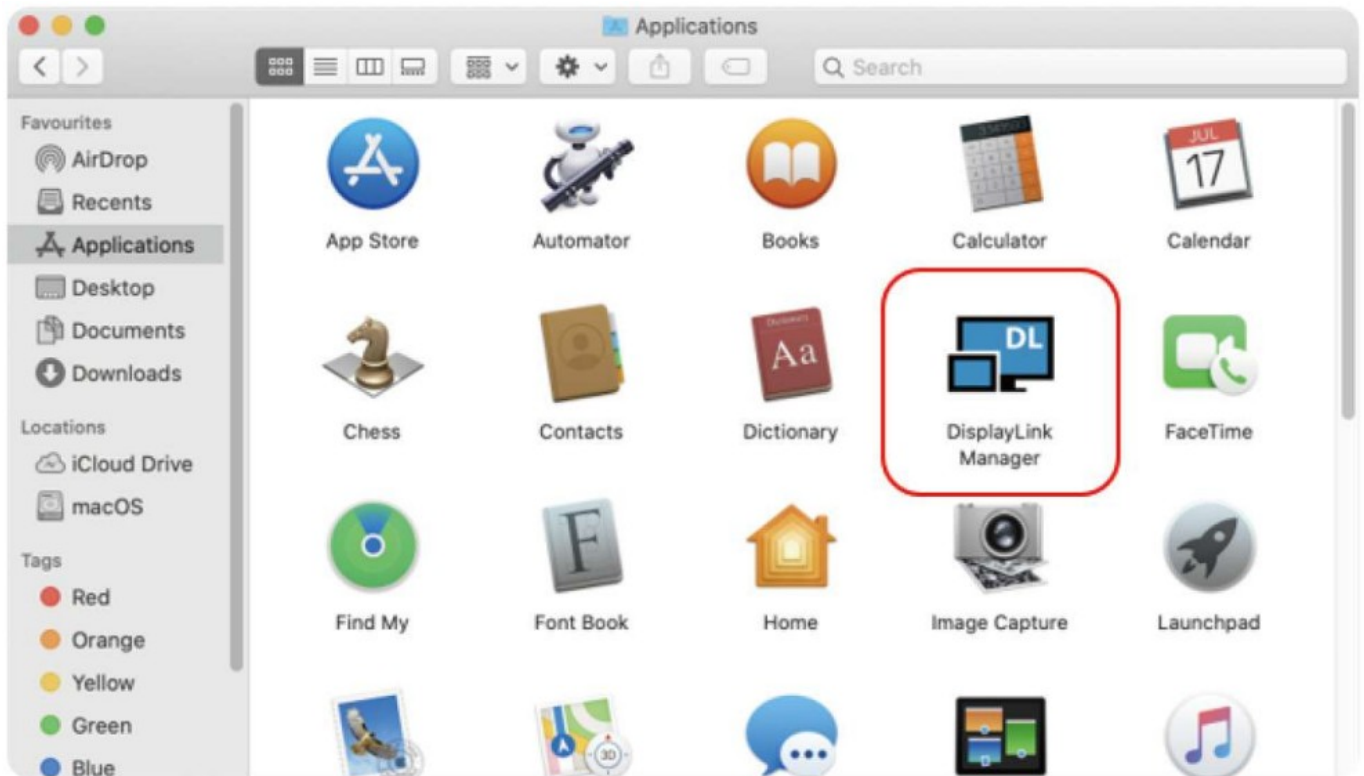
**NOTE:** Display Link driver requires that permission to capture pixels and send them through USB. Display Link driver does NOT record screen data.



2. Because the new permission will only be active the next time you start the application, macOS will invite you to "Quit Now". Please accept.



3. Now it has adequate permissions, re-open Display Link Manager from Applications in the Finder.



4. Your displays are now working properly.

Display Link Support <https://support.displaylink.com/>

The Display Link provides this support portal to try and answer common questions you might have about Display Link technology. If this still can't solve your problem, please feel free to contact us via [support@tobenone.com](mailto:support@tobenone.com).

DisplayLink Support

Support & Knowledge Base

Synaptics provides this support portal to try and answer common questions you might have about DisplayLink technology. However we cannot provide product specific support.

Synaptics is a chip and technology company and we do not sell any product directly to end users, therefore we only have a small end user support team. Members of the Synaptics team are active on the DisplayLink Forum, where your question may already be answered.

If you are having problems with a product containing DisplayLink technology, please contact the product manufacturer for support.

Before submitting a question or idea, please read our [Unsolicited Ideas Submission Policy](#).

I recommend... →

**MOST POPULAR SUGGESTIONS IN THIS COMMUNITY (139 SUGGESTIONS)**

Support Night Shift and f.lux for Mac OS  
PLANNING 946 tickets · 130 Comments pen

macOS App: Clamshell / Lid Closed Mode  
STARTED 824 tickets · 205 Comments pen

Make the Linux driver open source and get it into the kernel  
752 tickets · 43 pen Comments

[Post a new suggestion →](#)

**RECENTLY UPDATED SUGGESTIONS**

Make DisplayLink installer compatible with Ubuntu 21.04 (Hirsute Hippo)  
GATHERING FEEDBACK Updated 05/09/21

Enable visual accessibility settings for partially sighted users  
GATHERING FEEDBACK Updated 02/16/21

Retain Windows positions on screen when plugging in dock cable  
GATHERING FEEDBACK Updated 04/14/21

search

Contact DisplayLink

Give feedback

knowledge base

News 5

Tips and Tricks 20

Corporate Deployment 17

Troubleshooting: General 10

Troubleshooting: Windows 21

Troubleshooting: macOS 17

Troubleshooting: Android 6

Troubleshooting: Ubuntu 18

All articles

DisplayLink

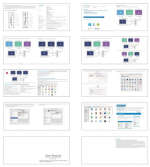
## Please Note:

1. The HDMI 2 and VGA only work if you download and install the Display Link driver
2. HDMI 1 and HDMI 2 can't output audio simultaneously for Mac OS or Windows.
3. The HDMI 2 port also output audio when you select 3.5mm audio port, it can't audio output individually.
4. AK@60Hz output only available when using a single HDMI 1 display. If HDMI2 displays are connected, for Mac Laptop, the maximum resolution is 2560\*1440 and 2048+1152 for your Windows Laptop that can't achieve 4K.
5. 2.4Ghz wireless devices such as wireless keyboard/mouse receivers, Bluetooth and WiFi adapter do not work in the USB3.0 ports, please try to connect the USB2.0 ports.
6. You unplugging the PD interface with your Mac laptop will cause the all other interfaces to be disconnected and reconnected which take 50s-90s. If you reconnect the PD power adapter in the waiting time, The HDMI 2 and VGA interfaces will reconnect automatic in 6s. But HDMI 1 is still be screen off, and your Mac laptop is not charged.
7. Due to power output limitations of some laptops, it is recommended that you connect only one HDD/SSD at a time.
8. It is NOT recommended that using the USB A port for charging iPads,tablets or smart phones.

**Register your product for a FREE upgrade to a 24-Month Warranty**

[www.tobenone.net/warranty](http://www.tobenone.net/warranty)

## Documents / Resources



**[TOBENONE UDS016D Triple Display USB-C Docking Station](#)** [pdf] User Manual  
UDS016D, UDS016D Triple Display USB-C Docking Station, Triple Display USB-C Docking Sta  
tion, Display USB-C Docking Station, USB-C Docking Station, Docking Station, Station

Manuals+.