



TOBENONE UC2401 DisplayLink Docking Station Triple Monitor User Guide

[Home](#) » [TOBENONE](#) » TOBENONE UC2401 DisplayLink Docking Station Triple Monitor User Guide 

Contents

- [1 TOBENONE UC2401 DisplayLink Docking Station Triple Monitor](#)
- [2 Free Warranty Extended](#)
- [3 Ports and Connectors](#)
- [4 Quick Start Guide](#)
- [5 USB-C DP Alt Mode](#)
- [6 Documents / Resources](#)
 - [6.1 References](#)
- [7 Related Posts](#)



TOBENONE UC2401 DisplayLink Docking Station Triple Monitor



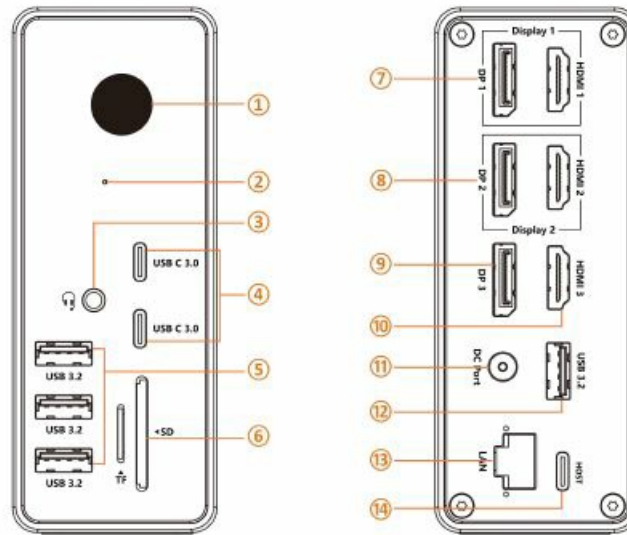
Free Warranty Extended

Register your product for a FREE upgrade to a 24-Month Warranty: <https://tobenone.com/warranty>

THANK YOU!

Thank you for purchasing TOBENONE Upgraded DisplayLink Docking Station UDS033! Our dock provides the ability to connect up to Triple 4K@-60Hz Displays, 6 USB peripherals, SD/TF 3.0, RJ45 Gigabit Ethernet, and 3.5mm stereo combo jack to your USB C laptop via one USB C cable.

Pons and Connectors



1. Power Button: Control dock power on/off
2. Green Power LED
3. 3.5mm Audio: Support mic&audio-out
4. USB C 3.0*2: Support data transfer and PD 18W output
5. USB A 3.2 *3: Speed up to 10Gbps
6. SD/microSD 3.0 Slot: Support SD&TF work simultaneously
7. Display 1: HDMI 1 or DP 1, resolution up to 4K@60Hz (driver-based)
8. Display 2: HDMI 2 or DP 2, resolution up to 4K@60Hz (driver-based) ®
9. Display 3: DP 3, resolution up to 8K@30Hz (Plug-and-Play)
10. Display 4: HDMI 3, resolution up to 8K@30Hz (Plug-and-Play)
11. DC Port: Connect the included power adapter, support 100W output
12. USB A 3.2: Speed up to 10Gbps
13. LAN Port: Speed up to 1000Mbps
14. HOST Port: Connect to the laptop

Quick Start Guide



Before connect the dock, please install the driver by visting : <https://www.synaptics.com/products/displaylink-graphics> You also can scan the right QR code and send it to the laptop.

1. Step 1: Please install the Displaylink Driver &: For macOS, after installing the DisplayLink driver, need to open Security&Privacy–Screen Recording–Allow DisplayLink manager to join. This dock uses screen recording to display the screen. Since the screen is recording, cannot watch any HDCP content(Netflix/Prime/ iTunes/Hulu ...). Must update your DisplayLink driver after you update the macOS system.

- Step 2: Connect the 120W power adapter to the dock's DC port (@)
- Step 3: Use the USB C cable coming with the dock to connect the dock and laptop via the HOST port (@)
- Step 4: Connect display 1 via HDMI 1 or DP 1 port ((J)), connect display 2 via HDMI 2 or DP 2 port(@), connect display 3/4 via HDMI 3 and DP 3 port(@, @))

Triple 4K@60Hz Displays Configuration



- Step 5: Attach USB-C devices to the USB-C ports(@). Attach USB devices(USB driver, keyboard, mouse, printer, etc.) to the USB ports(@,@).
- Step 6: Connect the speaker, headphones, or microphone to the audio port(@). And connect the ethernet cable to the ethernet port(@)
- Step 7: Turn on the power button(©)

| Item | Display 1 | | Display 2 | | Display 3 | Display 4 | Remark |
|------|----------------|----------------|----------------|----------------|----------------|----------------|-----------------------------------|
| | HDMI 1 | DP 1 | HDMI 2 | DP2 | HDMI 3 | DP3 | |
| 1 | 3840x2160/60Hz | | | | | | Single video output |
| 2 | | 3840x2160/60Hz | | | | | |
| 3 | | | 3840x2160/60Hz | | | | |
| 4 | | | | 3840x2160/60Hz | | | |
| 5 | | | | | 8K/30Hz | | |
| 6 | | | | | | 8K/30Hz | |
| 7 | 3840x2160/60Hz | | 3840x2160/60Hz | | 3840x2160/60Hz | 3840x2160/60Hz | Multiple video output for Windows |
| 8 | 3840x2160/60Hz | | | 3840x2160/60Hz | 3840x2160/60Hz | 3840x2160/60Hz | |
| 9 | | 3840x2160/60Hz | 3840x2160/60Hz | | 3840x2160/60Hz | 3840x2160/60Hz | |
| 10 | | 3840x2160/60Hz | | 3840x2160/60Hz | 3840x2160/60Hz | 3840x2160/60Hz | |
| 11 | 3840x2160/60Hz | | 3840x2160/60Hz | | 3840x2160/60Hz | | Multiple video output for MacBook |
| 12 | 3840x2160/60Hz | | 3840x2160/60Hz | | | 3840x2160/60Hz | |
| 13 | 3840x2160/60Hz | | | 3840x2160/60Hz | 3840x2160/60Hz | | |
| 14 | 3840x2160/60Hz | | | 3840x2160/60Hz | | 3840x2160/60Hz | |
| 15 | | 3840x2160/60Hz | 3840x2160/60Hz | | 3840x2160/60Hz | | |
| 16 | | 3840x2160/60Hz | 3840x2160/60Hz | | | 3840x2160/60Hz | |
| 17 | | 3840x2160/60Hz | | 3840x2160/60Hz | 3840x2160/60Hz | | |
| 18 | | 3840x2160/60Hz | | 3840x2160/60Hz | | 3840x2160/60Hz | |

USB-C DP Alt Mode

Please note that:

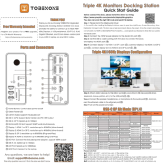
- A1: HDMI 1 and DP 1 cannot be used at the same time
- A2: HDMI 2 and DP 2 cannot be used at the same time
- A3: Full-function Windows laptop can extend up to 4 displays, must confirm laptop's USB C port support display. If the laptop's USB C port doesn't support display, DP 3 and HDMI 3 cannot work
- A4: Mac Book only can extend up to 3 displays, DP 3 and HDMI 3 cannot work simultaneously

Any questions, we are here to help Email: support@tobenone.com

The only question we can't fix is the one we don't know



Documents / Resources

| | |
|---|--|
|  | TOBENONE UC2401 DisplayLink Docking Station Triple Monitor [pdf] User Guide UDS033, A1COteXlo7L, UC2401, UC2401 DisplayLink Docking Station Triple Monitor, DisplayLink Docking Station Triple Monitor, Docking Station Triple Monitor, Station Triple Monitor, Triple Monitor, Monitor |
|---|--|

References

- [User Manual](#)