



TOALL L-Ring 2 Chart GPT Powered Ring User Manual

[Home](#) » [TOALL](#) » TOALL L-Ring 2 Chart GPT Powered Ring User Manual 

TOALL L-Ring 2 Chart GPT Powered Ring User Manual



Contents

- 1 Product introduction
- 2 Product Overview
- 3 Quick Start Guide
- 4 TOALL APP Connection
- 5 Recording Mode
- 6 AI Conversation Mode
- 7 Simultaneous Interpretation Mode
- 8 Touch Control Mode (Ordinary Bluetooth connection, without using the mobile APP)
- 9 L-Ring 2 Button Guide
- 10 Touch Buttons
- 11 Wearing and Operating the Space Ring
- 12 FCC Statement
- 13 Documents / Resources
 - 13.1 References
- 14 Related Posts

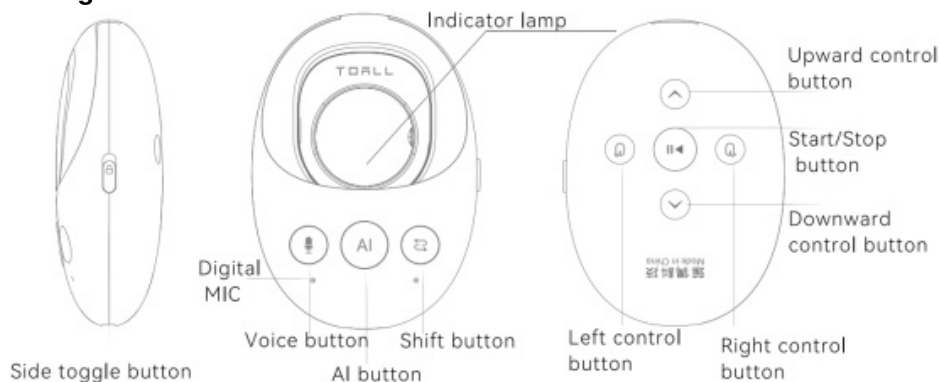
Product introduction

Welcome to use [TOALL] L-Ring. This product brings convenience to your work and entertainment with its excellent performance and comfortable use experience.

L-Ring



L-Ring2



Product Overview

This device works with a custom APP, supporting manual/automatic recording, interaction with AI tools such as Chat GPT, and realizing voice input, recording storage upload, voice-to-text, meeting minutes, and mind map generation.

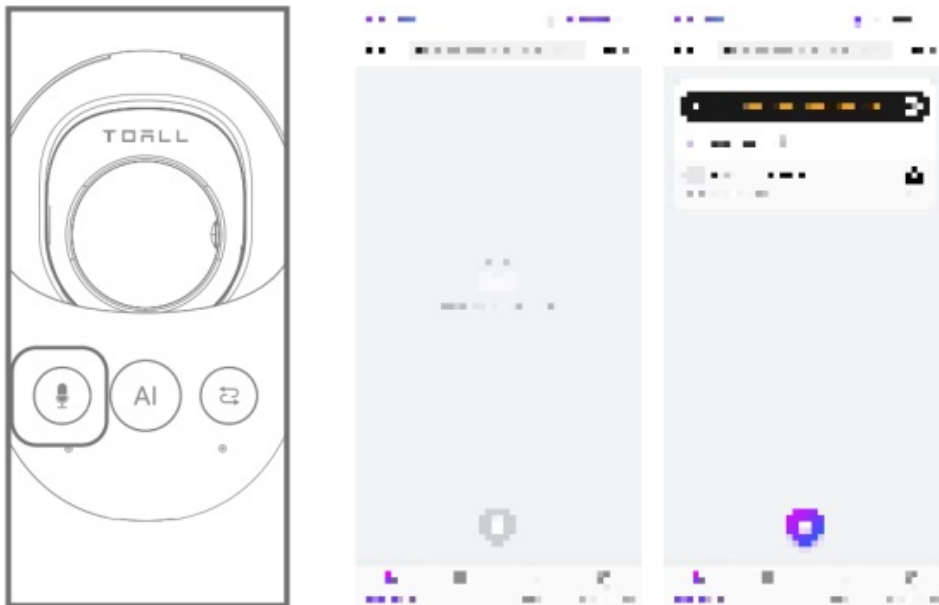
Quick Start Guide

TOALL APP Connection



1. Install the APP for the TOALL Space Ring, turn on Bluetooth,
2. Press the button to power on,
3. Open the APP, log in to the APP,
4. The APP will automatically recognize and connect to the device,
5. Successfully connect the device.

Recording Mode



1. Tap the record button to start recording
2. Tap the record button again to end this segment of recording (the recording will be automatically uploaded to the APP for review, transcription, meeting summaries, and mind maps).

AI Conversation Mode



- Press the AI button to engage in AI conversation, Press the AI button again to end the conversation.

Simultaneous Interpretation Mode

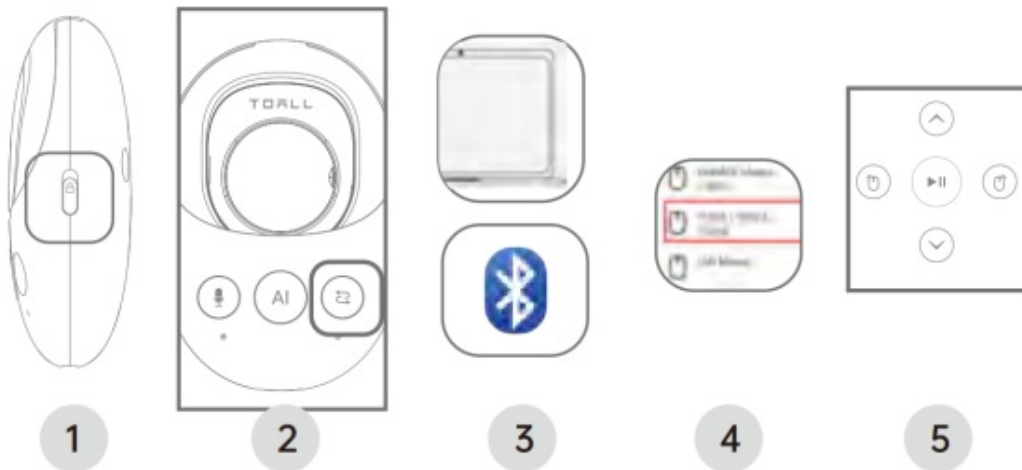


- Enter Simultaneous Interpretation Mode: Press the conversion button to enter Simultaneous Interpretation Mode and start interpreting, press the conversion button again to end this segment of speech.
- Voice Input and Translation: In Simultaneous Interpretation Mode, the device will receive voice input in

Language A in real-time and translate it into the text of Language B.

- Play Translated Voice: If you want to listen to the translated voice, please tap the speaker icon on the APP interface. The device supports mutual translation functions between multiple languages.
- Translation Result Display: The translated text will be directly displayed on the APP interface for easy viewing and follow-up by users.
- Press the conversion button again to exit Simultaneous Interpretation mode.

Touch Control Mode (Ordinary Bluetooth connection, without using the mobile APP)



- Enter Touch Control Mode:
 1. Press the side button of the AI compartment down to enter working mode
 2. Press and hold the shift button for 3 seconds
 3. Open Bluetooth on the computer and search for devices
 4. Connect to the Bluetooth named TOALL L-Ring 2
 5. After successful connection, the AI compartment blue light will stay on for 3 seconds before entering Touch Control Mode (at this time, the five touch buttons on the back will be activated)
- **Exit Touch Control Mode:** Press and hold the shift button again to exit.

L-Ring 2 Button Guide






Button up flick
— Sleep








Button down flick
— Power on

- The ring and compartment enter deep sleep.
- The compartment enters working mode, physical buttons are available, touch buttons are not available. When the compartment is in working mode, if there is no operation for 15 minutes, the ring and compartment will automatically enter deep sleep, any physical button can wake up, and it can also be woken up by flicking the

switch.

| | | |
|---|------------------|--|
|  voice button | tap | <ul style="list-style-type: none">• Press the voice button to start recording, press the voice button again to end recording. |
|  AI button | tap | <ul style="list-style-type: none">• Press the AI button to engage in AI conversation, press the AI button again to end the conversation. |
|  shift button | tap long presses | <ul style="list-style-type: none">• Press the shift button to enter Simultaneous Interpretation Mode, press the shift button again to end the current mode.• Press and hold for 3 seconds to enter “Touch Control Mode”, press and hold the shift button again to end the current mode. |

Touch Buttons

| | |
|---|---|
|  | Same as keyboard up arrow key supports single click, long press Double-click up arrow key same as page UP key (page turning function) |
|  | Same as keyboard down arrow key supports single click, long press Double-click down arrow key same as page Down key (page turning function) |
|  | Same as mouse left button supports single click, double click, long press, etc. |
|  | Same as mouse right button supports single click, long press, double click for Win+D combination key effect (one key to return to desktop/return to previous page) |
|  | Long press the start/stop button to achieve air mouse function Double-click the start/stop button same as long pressing the mouse scroll wheel effect (page translation), double-click the start/stop button to exit |

During the operation in the compartment, the device must run stably and must not freeze. If the device fails, you can perform a restart operation by pressing and holding the AI button for 10 seconds.

Wearing and Operating the Space Ring

1. **Wearing:** Position the Space Ring snugly on your right index finger, ensuring the control key aligns towards your right thumb. (Utilize the provided silicone finger sleeves for optimal fit across various finger sizes.)



2. **Activation:** Initiate by pressing the power button with your thumb (located above), enabling or pausing the

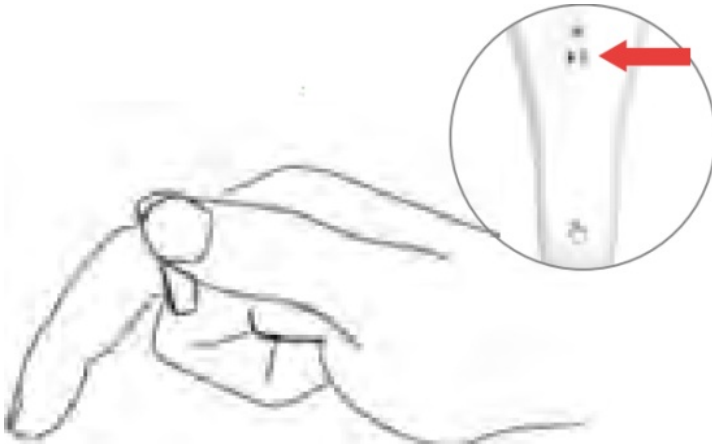
mouse functionality. (Successful activation prompts a single blink of the blue indicator light; when the ring functions, a rapid, faint blue pulse ensues, extinguishing upon pause.)



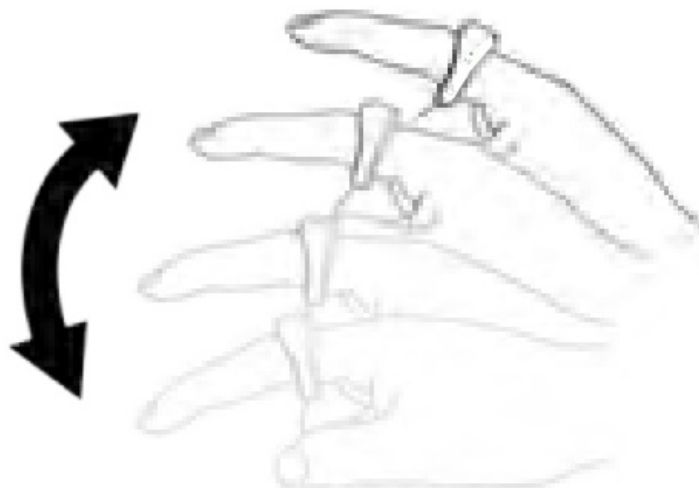
3. Use the ring to control the cursor's movement in all directions—up, down, left, or right. (Analogous to conventional mouse movements in all directions)



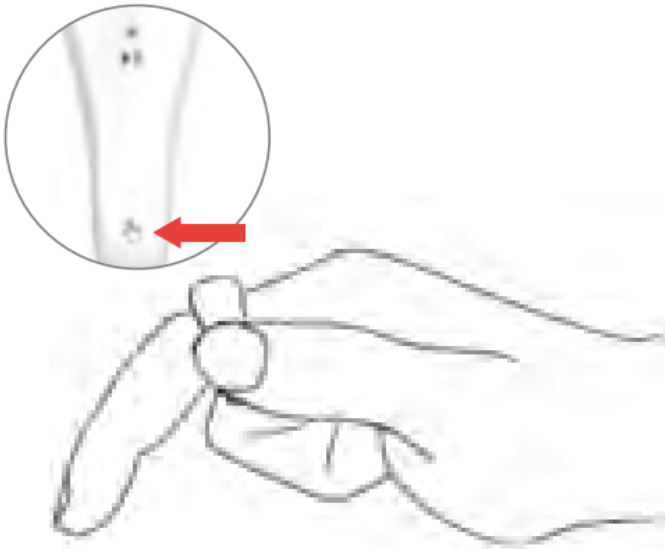
4. **Typing:** Engage cursor locking during typing with a single press of the power button;. After typing, press the power button again to deactivate. (This prevents the cursor from moving unpredictably while typing.)



5. **Page Navigation:** Effortlessly flip pages upwards or downwards by gesturing your finger accordingly.)

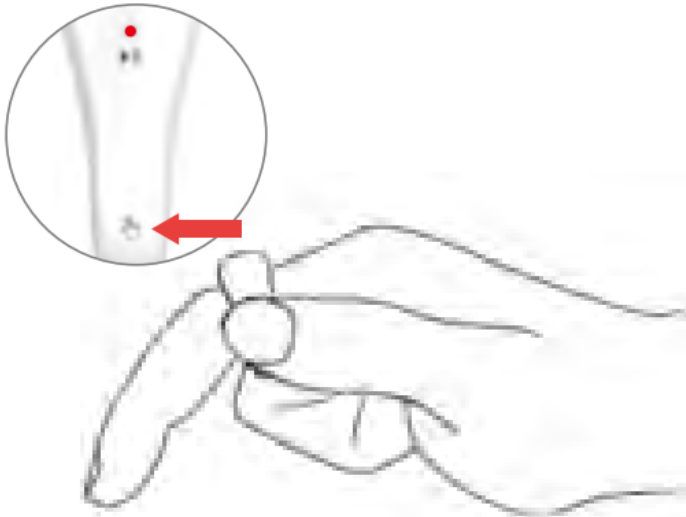


6. **Selection/Dragging:** Position the cursor, then employ a sustained thumb pressure on the gesture button to select or drag items.

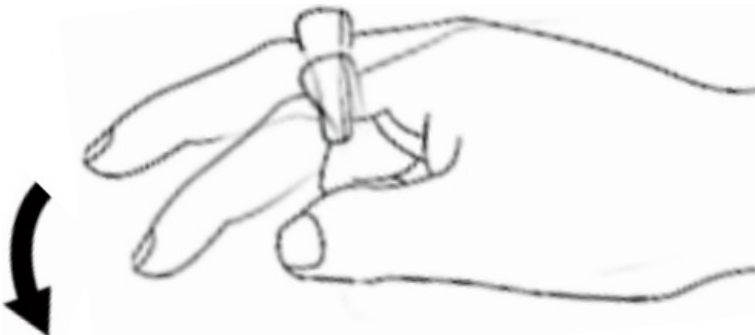


Gesture Mode (In Development)

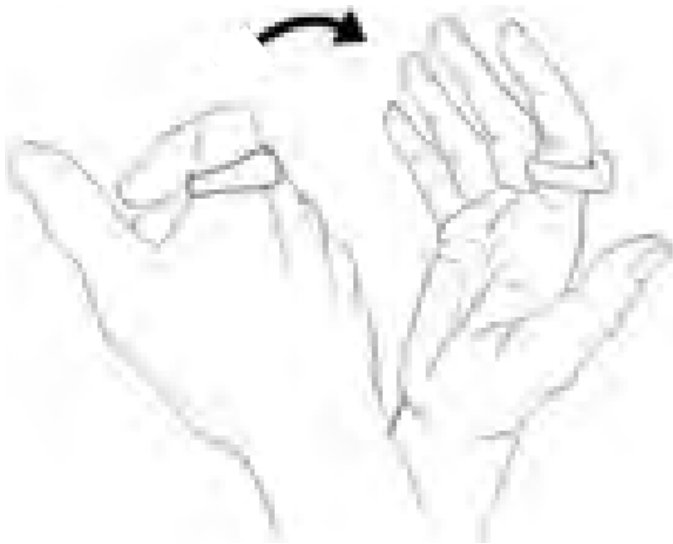
7. Single-thumb press on the gesture button (situated below) initiates gesture-based operation. (Illumination of the red indicator confirms successful activation.)



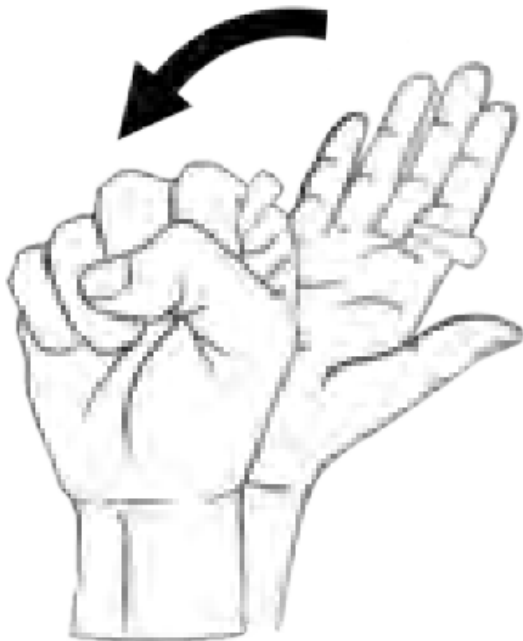
8. In the gesture-based mode, air-click with your index finger for item selection (akin to left-clicking of a mouse), or double-click in the air for item access (simulating double left-click of a mouse).



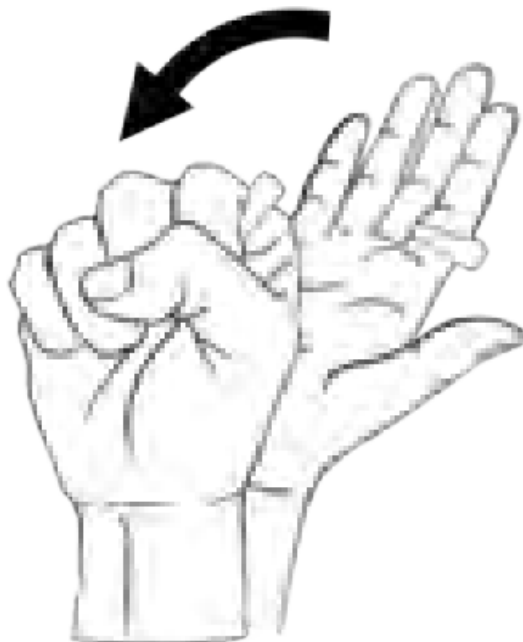
9. Tilt your right wrist to unveil the contextual menu, akin to right-clicking a mouse.



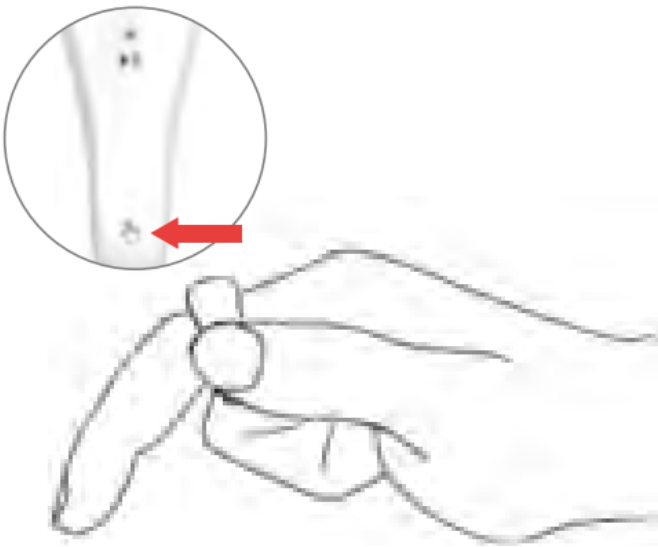
10. A right-hand grasp and leftward motion facilitate a seamless return to the desktop interface, currently compatible with Windows systems and select Android TVs.



11. Repeat the grasping motion to revert to the prior operational interface.



12. A single press on the gesture button restores cursor mobility, signaling departure from gesture mode.



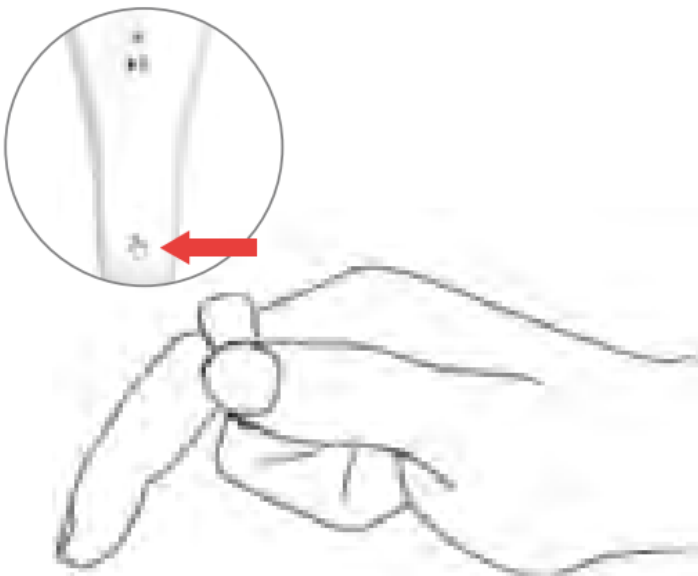
Touch Mode

13. A sustained thumb pressure on the power button for five seconds transitions into touch mode, indicated by two blinks of the purple indicator.

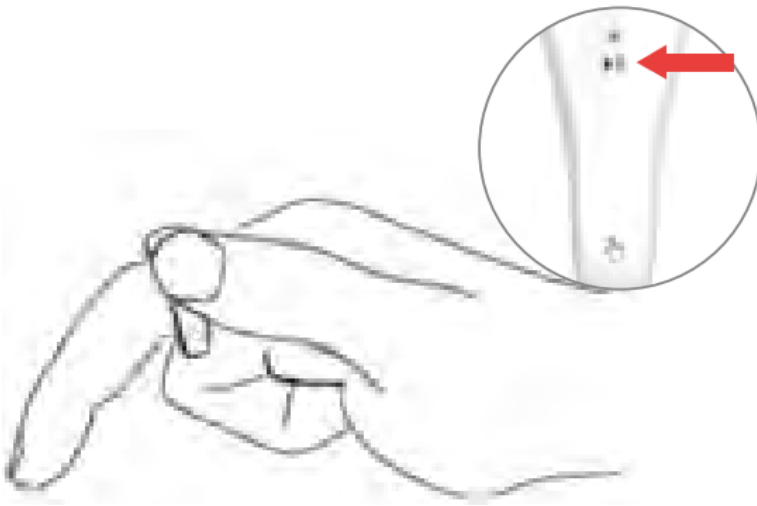
Exiting entails a similar five-second press.



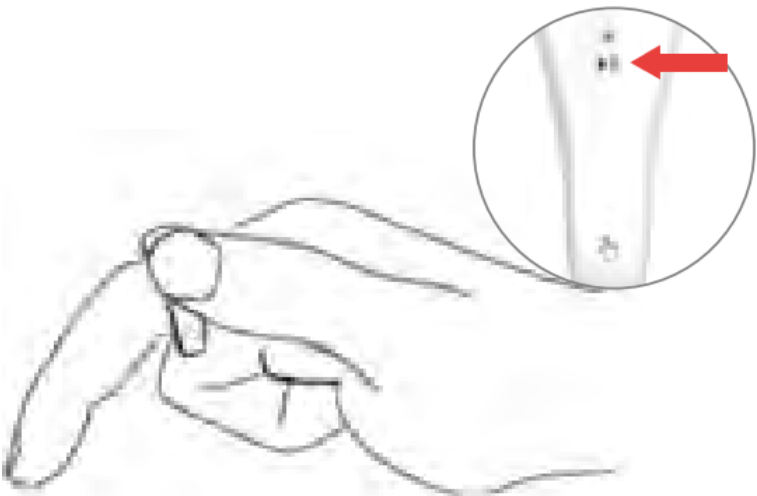
14. In the touch mode, use your thumb to single or double-click the gesture button (bottom button) to select or open objects. This action is equivalent to the typical left-click or double-click of a mouse.



15. With a thumb press on the power button (top button), the menu bar pops up. This action functions akin to a standard right-click on a mouse.



16. During typing, a double press on the power button (top button) pauses touch mode, serving as the equivalent of pausing mouse functionality.



FCC Statement

This device complies with part 15 of the FCC rules. Operation is subject to the following two conditions: (1) this device may not cause harmful interference, and (2) this device must accept any interference received, including interference that may cause undesired operation.

Changes or modifications not expressly approved by the party responsible for compliance could void the user's authority to operate the equipment.


NOTE: This equipment has been tested and found to comply with the limits for a Class B digital device, pursuant to part 15 of the FCC Rules. These limits are designed to provide reasonable protection against harmful interference in a residential installation. This equipment generates uses and can radiate radio frequency energy and, if not installed and used in accordance with the instructions, may cause harmful interference to radio communications. However, there is no guarantee that interference will not occur in a particular installation. If this equipment does cause harmful interference to radio or television reception, which can be determined by turning the equipment off and on, the user is encouraged to try to correct the interference by one or more of the following measures:

- Reorient or relocate the receiving antenna.
- Increase the separation between the equipment and receiver.
- Connect the equipment into an outlet on a circuit different from that to which the receiver is connected.
- Consult the dealer or an experienced radio/TV technician for help.

The device has been evaluated to meet general RF exposure requirement. The device can be used in portable exposure condition without restriction.



Documents / Resources

| | |
|---|--|
| <div><p>Product User Manual L-Ring 2</p><p>TOALL</p><p>Product Introduction The L-Ring 2 is a portable ring-shaped device that can be used in portable exposure condition without restriction.</p><p>Product Overview The L-Ring 2 is a portable ring-shaped device that can be used in portable exposure condition without restriction.</p><p>Quick Start Guide 1.1 TOALL APP Connection 1.2 TOALL APP Connection 2.1 Recording Mode</p></div> | <p>TOALL L-Ring 2 Chart GPT Powered Ring [pdf] User Manual LR003, 2BGSQ-LR003, 2BGSQ-LR003, L-Ring 2 Chart GPT Powered Ring, L-Ring 2, Chart GP T Powered Ring, Powered Ring, Ring</p> |
|---|--|

References

- [User Manual](#)

[Manuals+](#), [Privacy Policy](#)

This website is an independent publication and is neither affiliated with nor endorsed by any of the trademark owners. The "Bluetooth®" word mark and logos are registered trademarks owned by Bluetooth SIG, Inc. The "Wi-Fi®" word mark and logos are registered trademarks owned by the Wi-Fi Alliance. Any use of these marks on this website does not imply any affiliation with or endorsement.