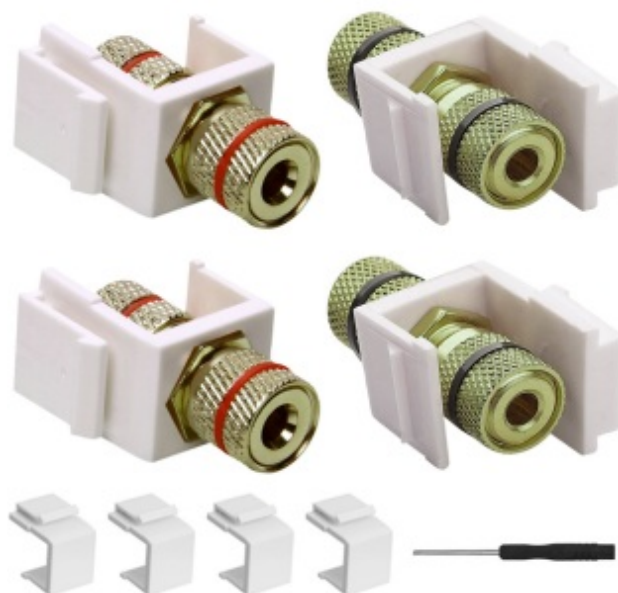


**Contents** [ [hide](#) ]

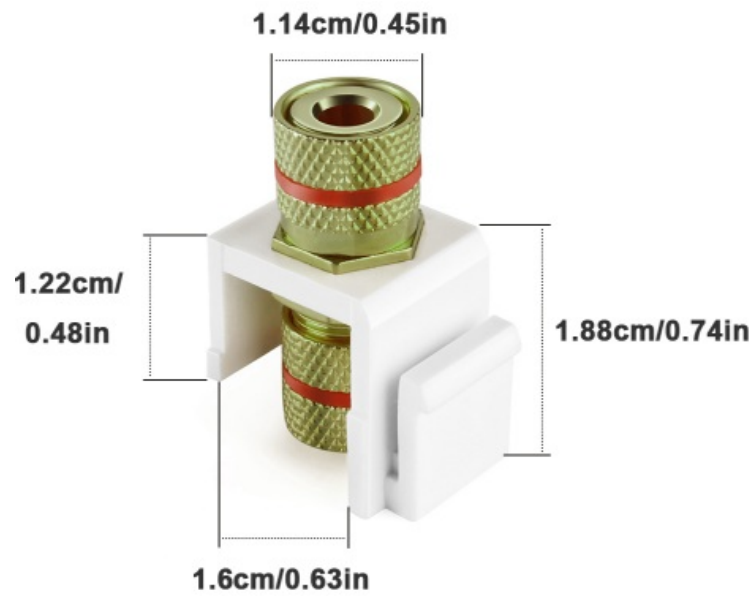
- [1 TNP Banana Jack Keystone Insert](#)
- [2 Product size](#)
- [3 Product display](#)
- [4 How to use](#)
- [5 Blank Keystone Jack Inserts & Screwdriver](#)
- [6 Wide compatibility](#)
- [7 Application](#)
- [8 Documents / Resources](#)
  - [8.1 References](#)

# TNP

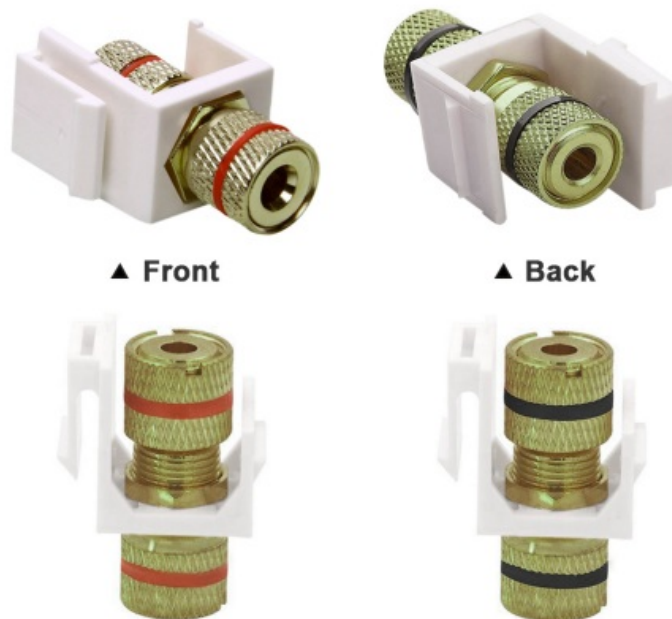
## TNP Banana Jack Keystone Insert



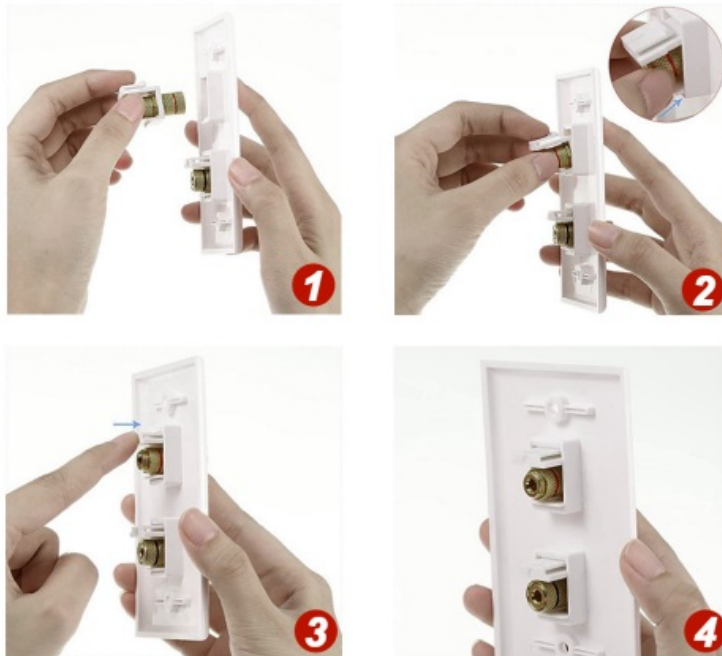
## Product size



## Product display



## How to use

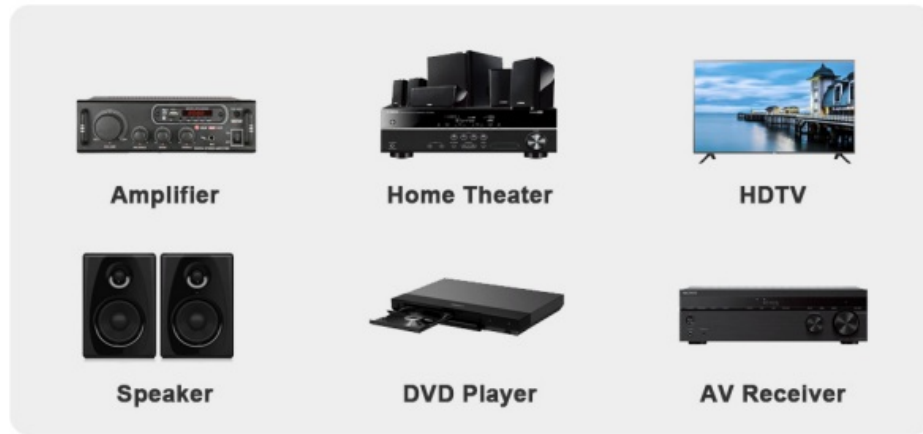


## Blank Keystone Jack Inserts & Screwdriver

- You can pry it up with a flathead screwdriver for easy removal on trapezoidal wall panels. (Figure 1)
- If the keystone wall plate has extra ports that are not being used, you can extra blank keystone jack inserts to seal the ports to keep out dust and debris. (figure 2)



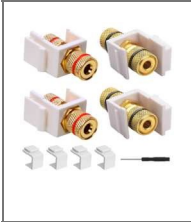
## Wide compatibility



## Application



## Documents / Resources



[TNP Banana Jack Keystone Insert \[pdf\]](#) Installation Guide  
Banana Jack Keystone Insert, Jack Keystone Insert, Keystone Insert, Insert

## References

- [User Manual](#)

 Banana Jack Keystone Insert, insert, Jack Keystone Insert, Keystone Insert,

 TNP   TNP

# Leave a comment

Your email address will not be published. Required fields are marked \*

Comment \*

Name

Email

Website

☐ Save my name, email, and website in this browser for the next time I comment.

Post Comment

Search:

e.g. whirlpool wrf535swhz

Search

[Manuals+](#) | [Upload](#) | [Deep Search](#) | [Privacy Policy](#) | [@manuals.plus](#) | [YouTube](#)

This website is an independent publication and is neither affiliated with nor endorsed by any of the trademark owners. The "Bluetooth®" word mark and logos are registered trademarks owned by Bluetooth SIG, Inc. The "Wi-Fi®" word mark and logos are registered trademarks owned by the Wi-Fi Alliance. Any use of these marks on this website does not imply any affiliation with or endorsement.