



TMT AUTOMATION ChowHUB Smart Wi-Fi Garage Door Opener User Manual

[Home](#) » [TMT AUTOMATION](#) » TMT AUTOMATION ChowHUB Smart Wi-Fi Garage Door Opener User Manual 

Contents

- 1 TMT AUTOMATION ChowHUB Smart Wi-Fi Garage Door Opener
- 2 Product Information
- 3 Product Usage Instructions
- 4 Introduction of the ChowHUB
- 5 Product overview
- 6 Kit contents
- 7 Specifications
- 8 Installation guide
- 9 Apply for a new Chow account
- 10 Connecting the ChowHUB to the Chow! App
- 11 Setting of Chow!APP cycle mode
- 12 Operation page
- 13 Wireless door sensor
- 14 Pairing remotes
- 15 Account management page
- 16 Owner shares device
- 17 FAQ
- 18 Documents / Resources
 - 18.1 References
- 19 Related Posts





Product Information

Introduction of the ChowHUB

This user manual provides information about the ChowHUB and its features and functions. The ChowHUB is a device that can upgrade an existing automation system to become a smartphone control unit through the TMT Chow! App. The ChowHUB can integrate with other TMT IoT accessories such as ChowCAM and ChowBELL on the Chow! App.

Product Overview

The ChowHUB is a universal stand-alone Wi-Fi HUB with the following features:

- Cover with R and P buttons
- Wi-Fi receiver board
- Terminals for wire connections
- Remote learn button
- 12-24V AC/DC power input
- AC power adaptor with 12V/1A output
- 3 individual input terminals
- 3 individual output terminals

Kit Contents

1. ChowHUB
2. Expansion screws (4)
3. Holder
4. Wire (3 pcs)
5. DoorStatus sensor
6. Power plug

Specifications

The ChowHUB has the following specifications:

- Frequency: [Frequency]
- Working temperature: [Temperature Range]
- Dimensions: [Dimensions]
- Power: [Power]

Product Usage Instructions

Installation Guide

General Installation:

1. Measure the drilling positions for the expansion screws with the holder. Fasten the holder with the expansion screws to the wall.
2. Install the antenna on the ChowHUB.
3. The ChowHUB will magnetically be attached to the holder.
4. Attach the power plug to the ChowHUB. The blue LED will blink right after it's plugged in, and the ChowHUB will be ready for pairing.

Wire Connection Cycle Mode For connecting to a push button terminal:

Connect terminals 1 and 2 to the push button terminal of your gate automation. Terminal 7 is for a wired limit switch that sends a signal to your smartphone when triggered. Please refer to the manual of your automation to find the push button terminal.

To control a second device:

Connect terminals 3 and 4 to the push button terminal of your gate automation. Terminal 8 is for a second wired limit switch that sends a signal to your smartphone when triggered. Please refer to the manual of your automation to find the push button terminal.

Wire Connection Open/Stop/Close Mode Before connection:

Make sure your gate automation system has an open/stop/close terminal. Terminal 7 is for a wired limit switch that sends a signal to your smartphone when triggered. Please refer to the manual of your automation to find the open/stop/close terminal.

Scenario 1:

Connect the wired door status sensor to terminals R1 and GND. Connect the open/stop/close terminals to GND, OPEN, STOP, and CLOSE. Please DO NOT connect the power plug and supply power from the motor at the same time.

Scenario 2:

Connect the wired door status sensor to terminals R2 and GND. Connect the open/stop/close terminals to GND, OPEN, STOP, and CLOSE. Please DO NOT connect the power plug and supply power from the motor at the same time.

Introduction of the ChowHUB

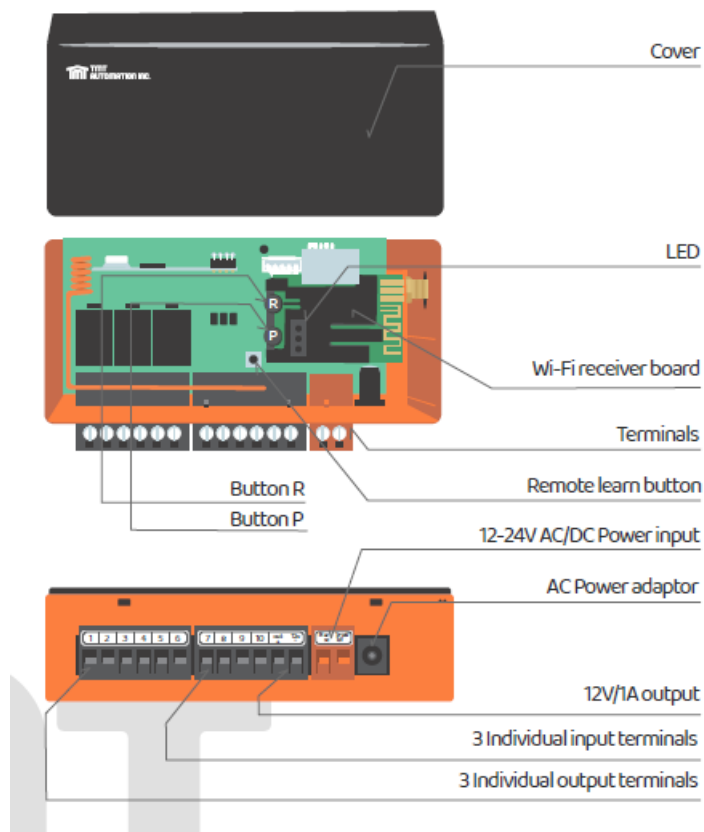
This user manual is designed to provide indications of the ChowHUB and its features and functions

ChowHUB is a device can upgrade the existing automation system to become a smartphone control unit through TMT Chow! APP

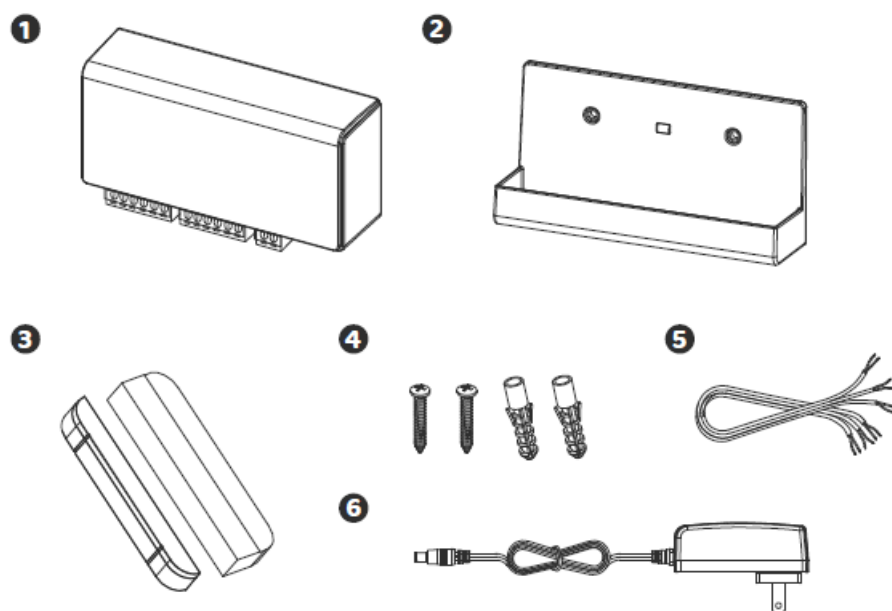
ChowHUB can intergrade with other TMT IOT accessories such as ChowCAM and ChowBELL on the Chow! APP

Product overview

Universal stand-alone Wi-Fi HUB



Kit contents



1. ChowHUB
2. Holder
3. Door Status sensor
4. Expansion screws
5. Wire*3pcs
6. Power plug

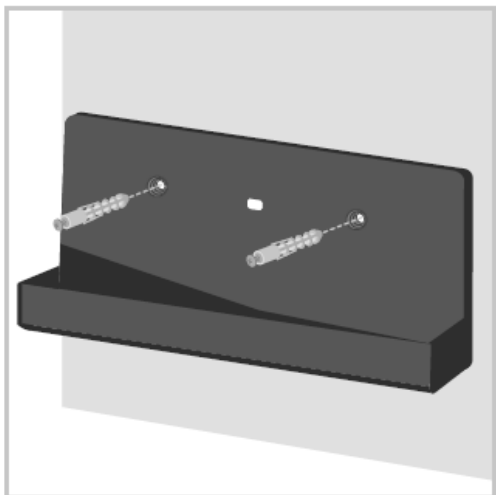
Specifications

Frequency	433 Mhz and 2.4GHz
Working temperature	-20°C~70°C
Dimensions	56x110x35mm
Power	AC/DC , 12V/24V , 1A

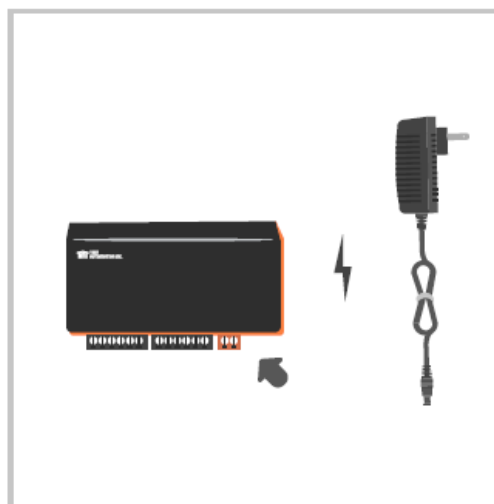
Installation guide

General Installation

1. Measure the drilling positions for the expansion screws with the holder. Fasten the holder with the expansion screws to the wall.
2. Install the antenna on the ChowHUB



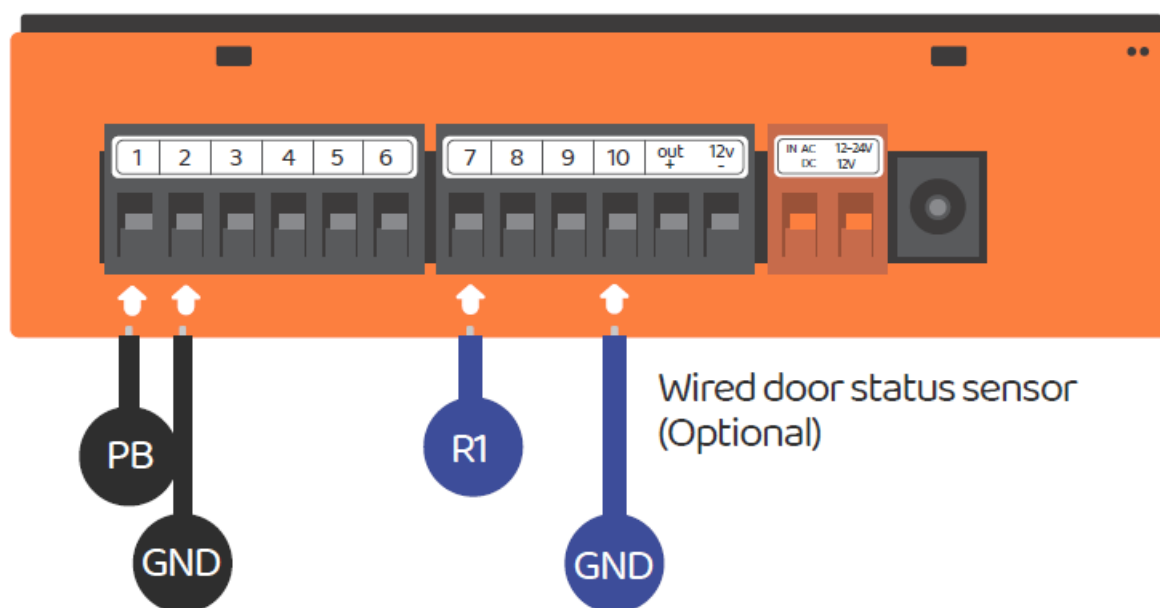
3. The ChowHUB will magnetically be attached to the holder.
4. Attach the power plug to the ChowHUB. The blue LED will blink right after it's plug in, and the ChowHUB will be ready for pairing.



Wire connection cycle mode

Please connect t1 and t2 terminals to the push button terminal of your gate automation. t1 is the terminal for a wired

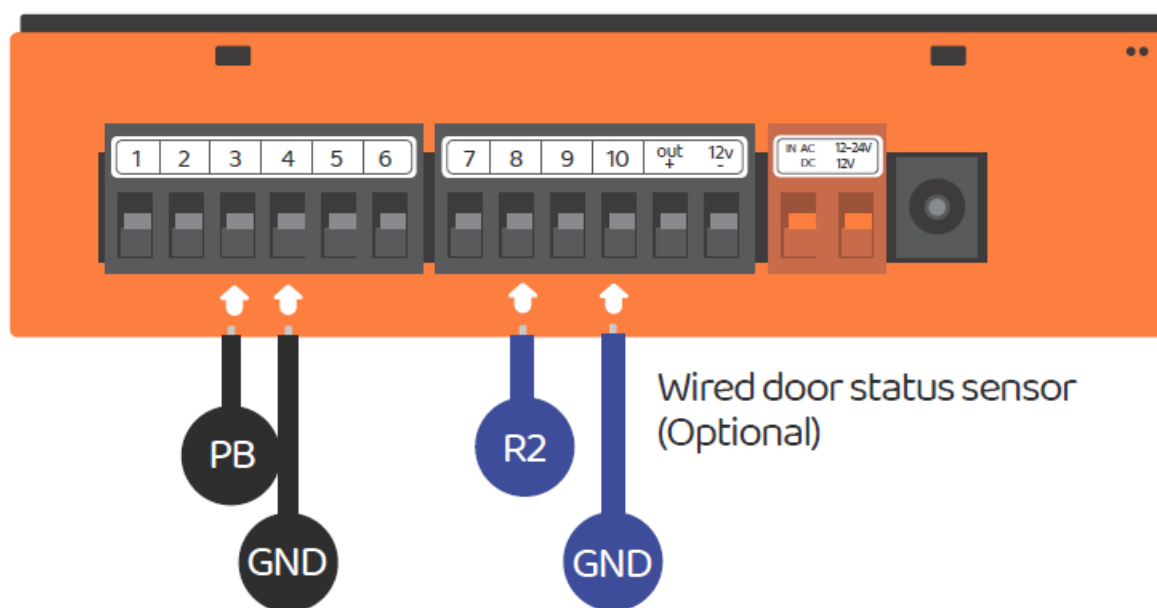
limit switch that sends signal to your smart phone when triggered. ***Please refer to the manual of your automation to find the push button terminal***



2. To control a second device. Please connect terminals 3 and 4 to the push button terminal of your gate automation.

8 is the terminal for second wired limit switch that sends signal to your smart phone when triggered.

Please refer to the manual of your automation to find the push button terminal

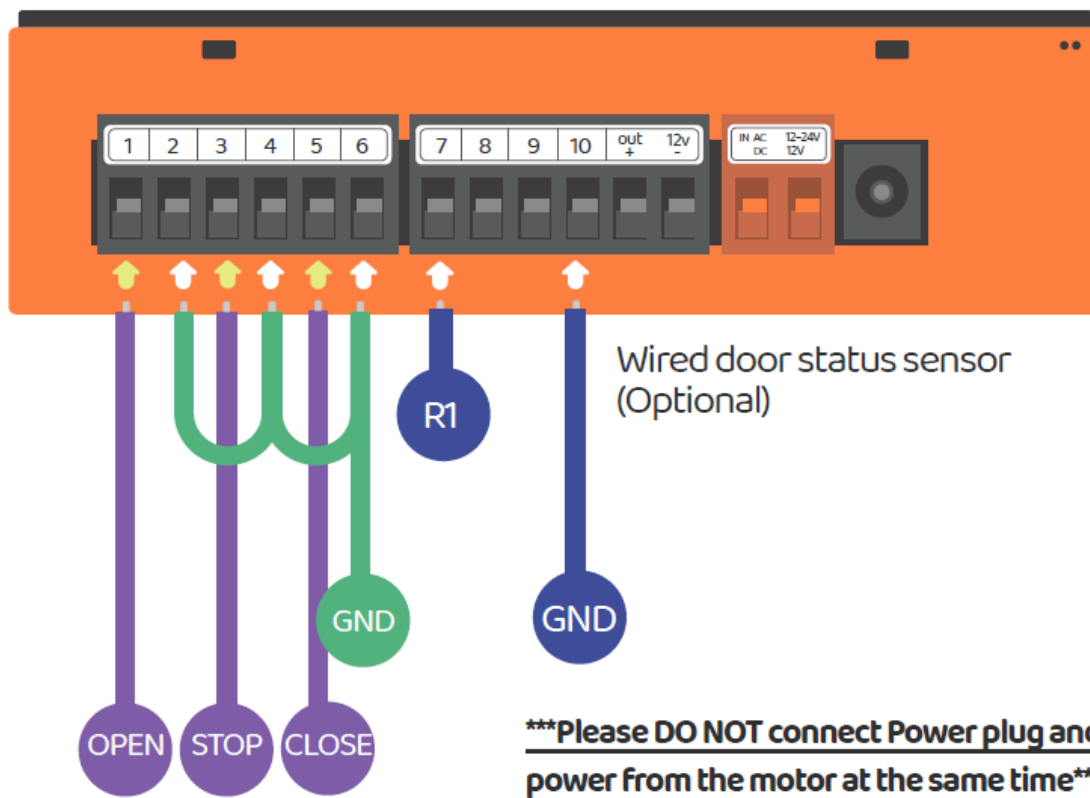


Wire connection open/stop/close mode

Before connection, please make sure your gate automation system has open/stop/close terminal.

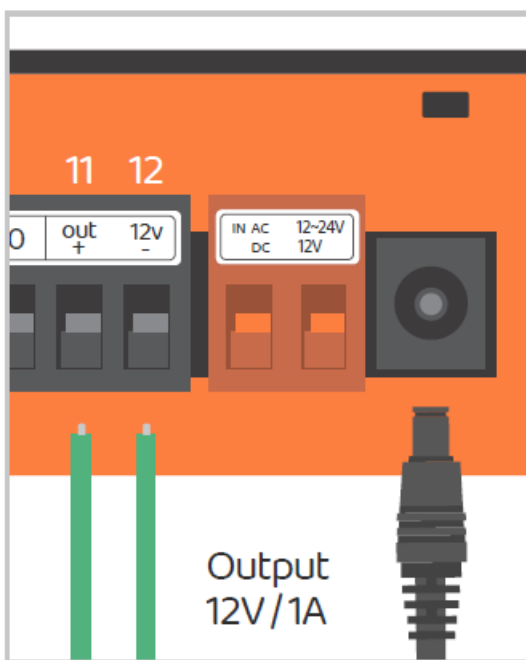
7 is the terminal for a wired limit switch which sends signal to your smartphone when triggered.

Please refer to the manual of your automation to find the open/stop/close terminal

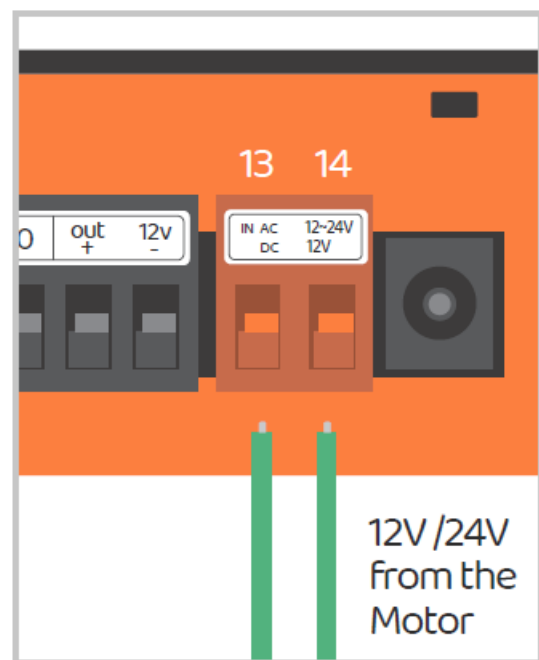


- Scenario 1
Ter 11minal and supply12 12V/1A when connect to Power plug
- Scenario 2
Ter 13minal and bec14 ome 12V/24V input terminals which can take AC or DC power from the motor










Scenario 1



Scenario 2



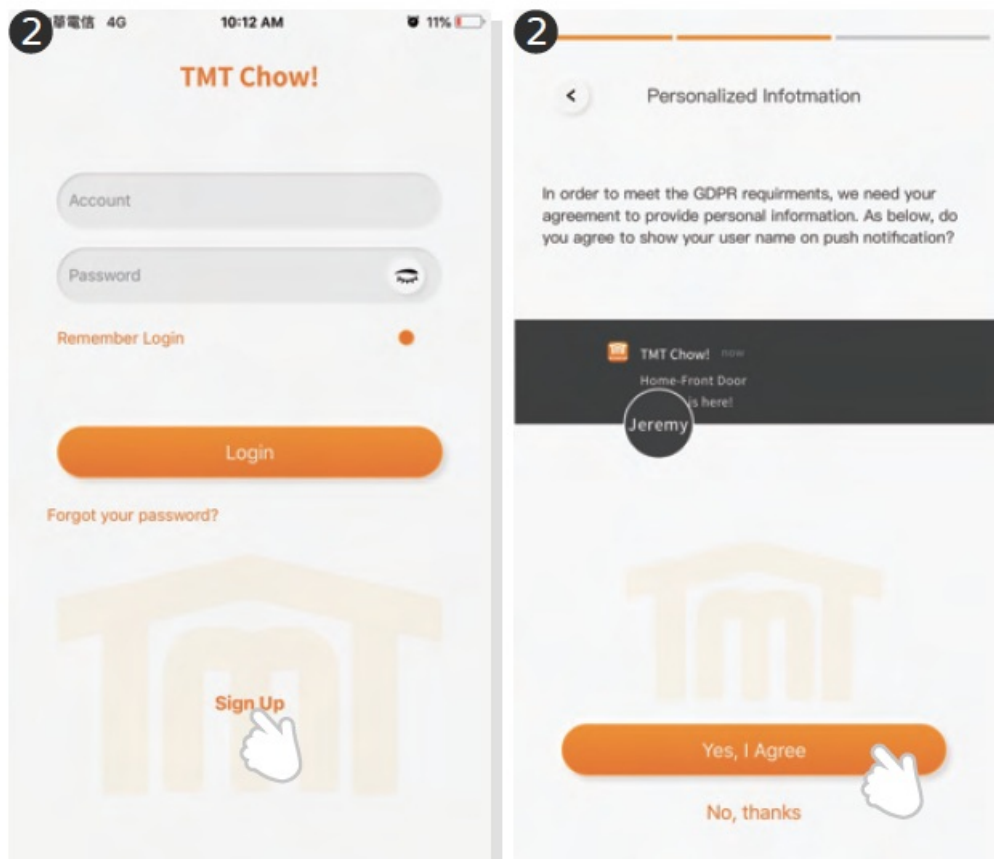
Output terminals

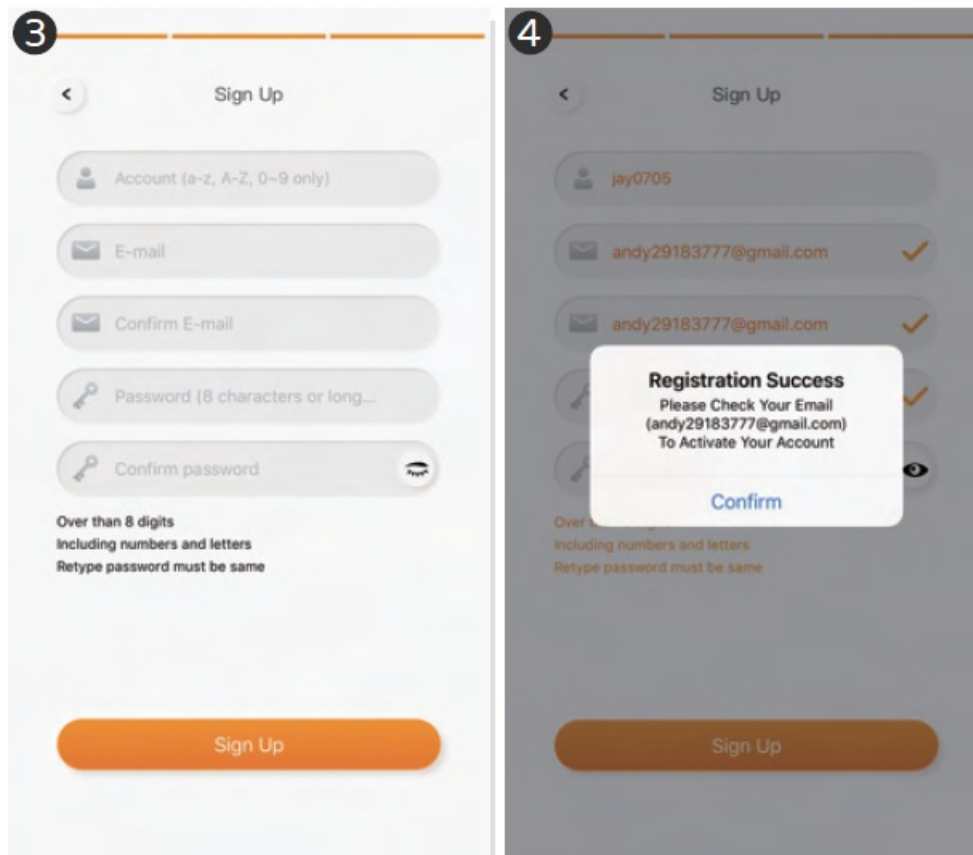
3 Outputs	Outputs #1 (APP-Door1)		Outputs #2 (APP-Door2)		Outputs #3 (APP-Door3)	
ChowHUB terminal	1	2	3	4	5	6
Device terminal	PB / Push button	GND	PB / Push button	GND	PB / Push button	GND
	Default NO Circuit		Default NO Circuit		Default NO Circuit	
APP parameter setting	 Relay 1 Mode NO		 Relay 2 Mode NO		 Relay 3 Mode NO	
	 Relay 1 Mode NC		 Relay 2 Mode NC		 Relay 3 Mode NC	
	 Relay 1 Mode None		 Relay 2 Mode None		 Relay 3 Mode None	
Input terminals						
3 Inputs	Inputs #1		Inputs #2		Inputs #3	
ChowHUB terminals	7	10	8	10	9	10
Wire trigger device	Sensor 1	GND	Sensor 2	GND	Sensor 3	GND
APP parameter setting	Trigger mode 1 (Default) NO circuit NC-NO OPEN;NC-NO CLOSE					
	Trigger mode 2 NC circuit NC-NO OPEN;NC-NO CLOSE					
	Function OFF					

Apply for a new Chow account



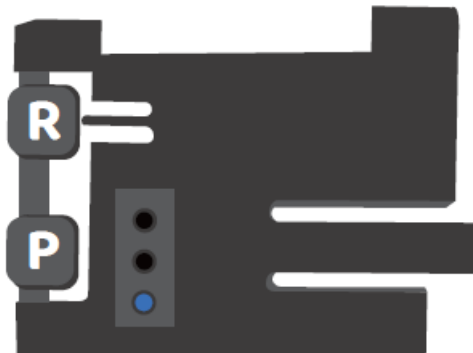
1. Please scan the QR code and download the Chow! App
2. Press sign up icon and press the agree icon to continue
3. Please type the following information for registration:
 1. Email (enter twice for verification)
 2. Password (enter twice for verification)
 3. The password should have at least 1 English character and at least 8 characters/numbers in total
4. The system will send a link to your email when the registration succeeds
5. Please go to your email , and click the link to activate your Chow account
6. Please log in to your Chow account





Connecting the ChowHUB to the Chow! App

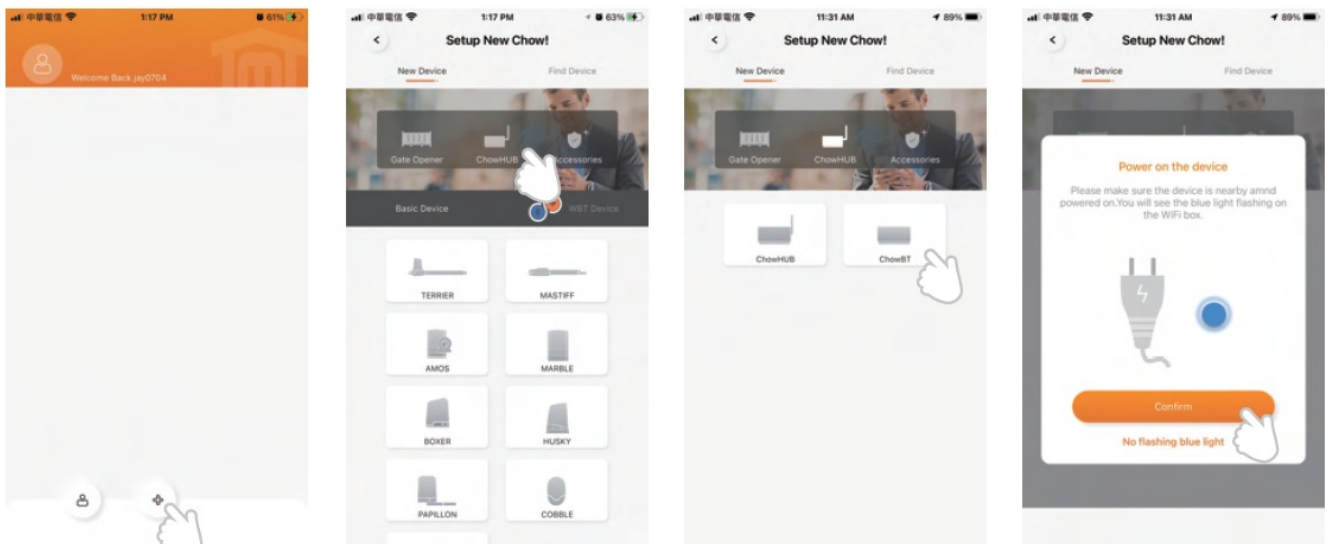
For initial setup, check if the blue indication light is flashing IF not, please follow below procedures to reset the device.



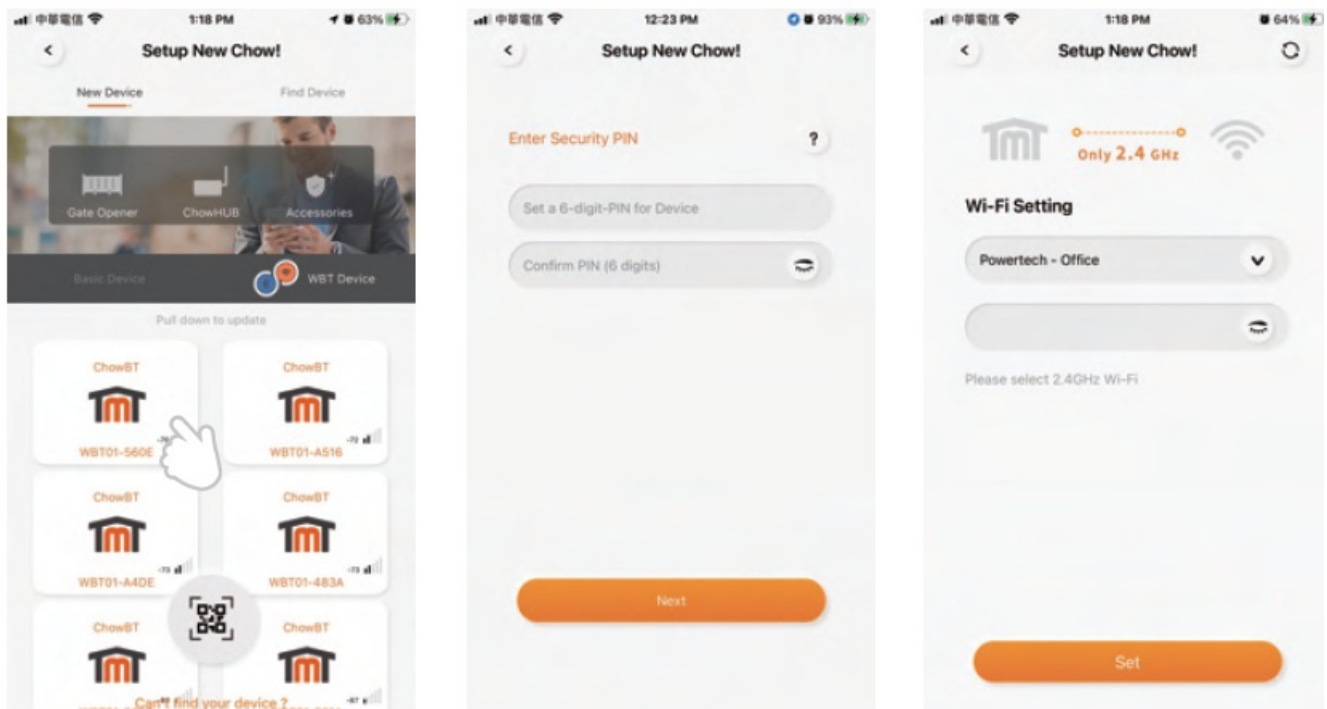
1. Press the P button for 5 seconds
2. Press the R button once

Please turn ON the Blue tooth function of your smartphone

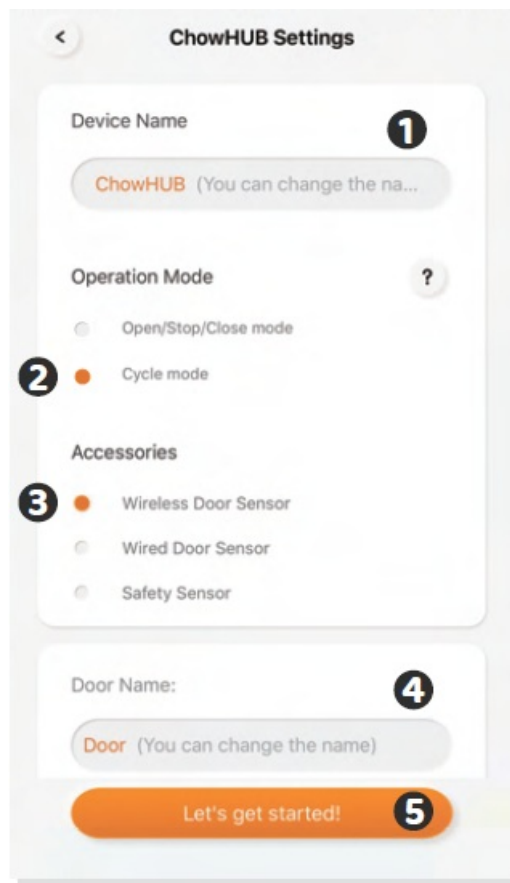
1. Tap the (+) icon to add a new device
2. Tap the ChowHUB to add a new device
3. Tap to ChowBT icon
4. Please check if you power the device



5. Please select your device
6. Set a security PIN code by enter the same code twice
7. Entering the correct password of your Wi-Fi
8. Tap the device at the main page to enter the setting page



Setting of Chow!APP cycle mode



1. Fill in the name of the device

2. Select the (cycle mode)

3. Select (wireless door sensor).

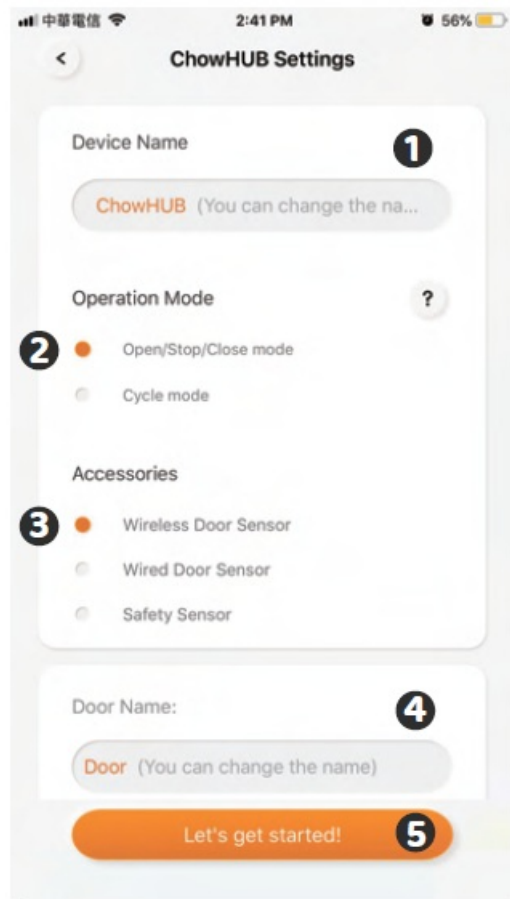
*** For the connection of wireless limit switch, please refer to

4. Select the corresponds door output (Door1 = Output 1)

1. enter the door name

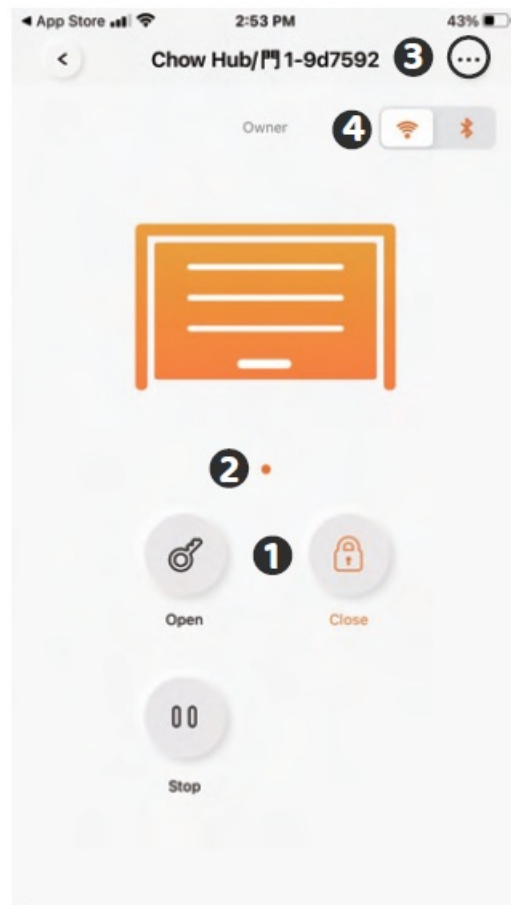
2. choose the door type (different icon) Garage door / Swing Gate / Sliding Gate 5. Lets get started !

Setting of Chow!APP open/stop/close mode



1. Fill in the name of the device
2. Select the (open/stop/close mode)
3. Select (wireless door sensor).
- ****For the connection of wireless door sensor, please refer to Page 11 Wireless door sensor.***
4. Enter the door name choose the door type (different icon) garage door / swing gate / sliding gate
5. Lets get started !
6. Select DC mode as the standard setting
7. Make the correct connection according to the diagram Start to use

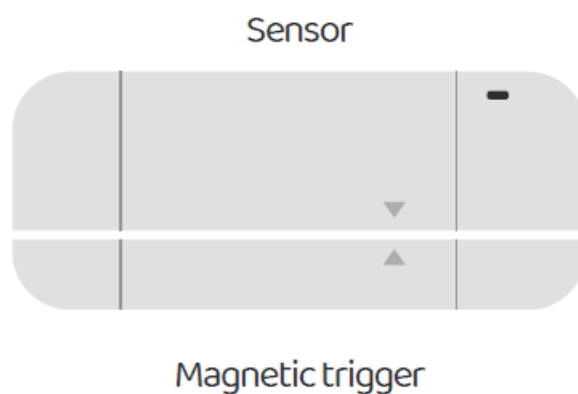
Operation page



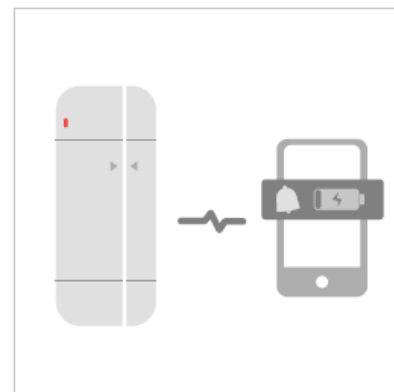
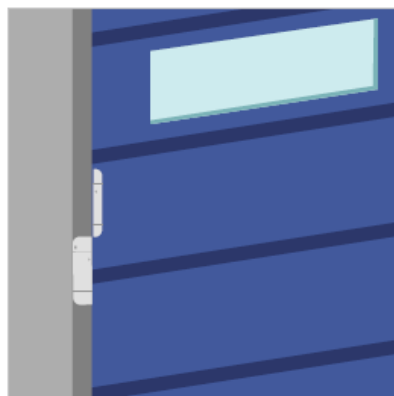
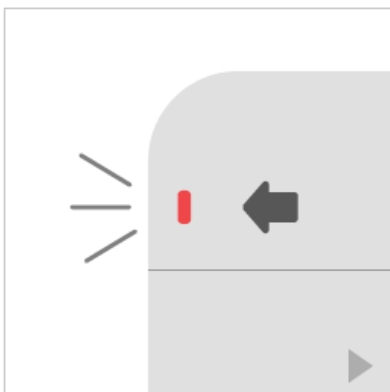
1. Operation button
2. Switching bar for different device
3. Setting page
 1. Device information
 2. Edit or add devices
 3. Available accessories
 4. Parameter settings
4. Switching button (Wi-Fi/Bluetooth)

Wireless door sensor

Door sensor



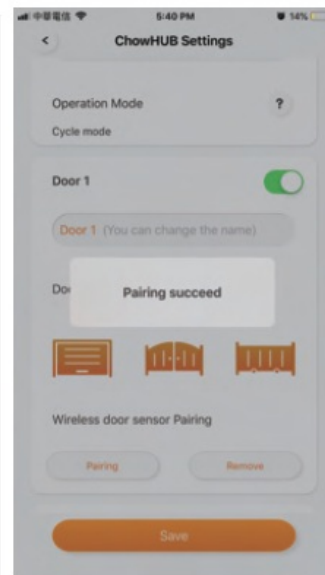
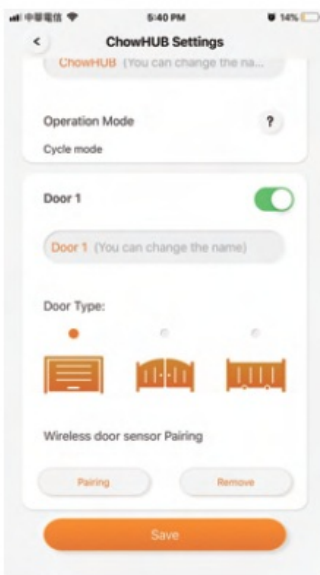
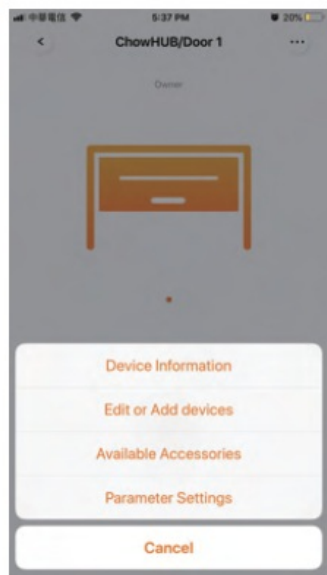
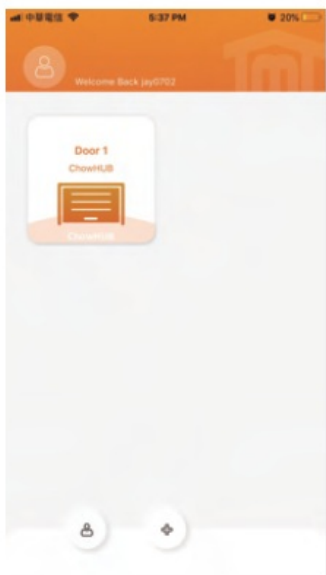
Door sensor consists of a magnetic trigger and a sensor. The Door sensor will send a signal when the gate opener reach the closed position.



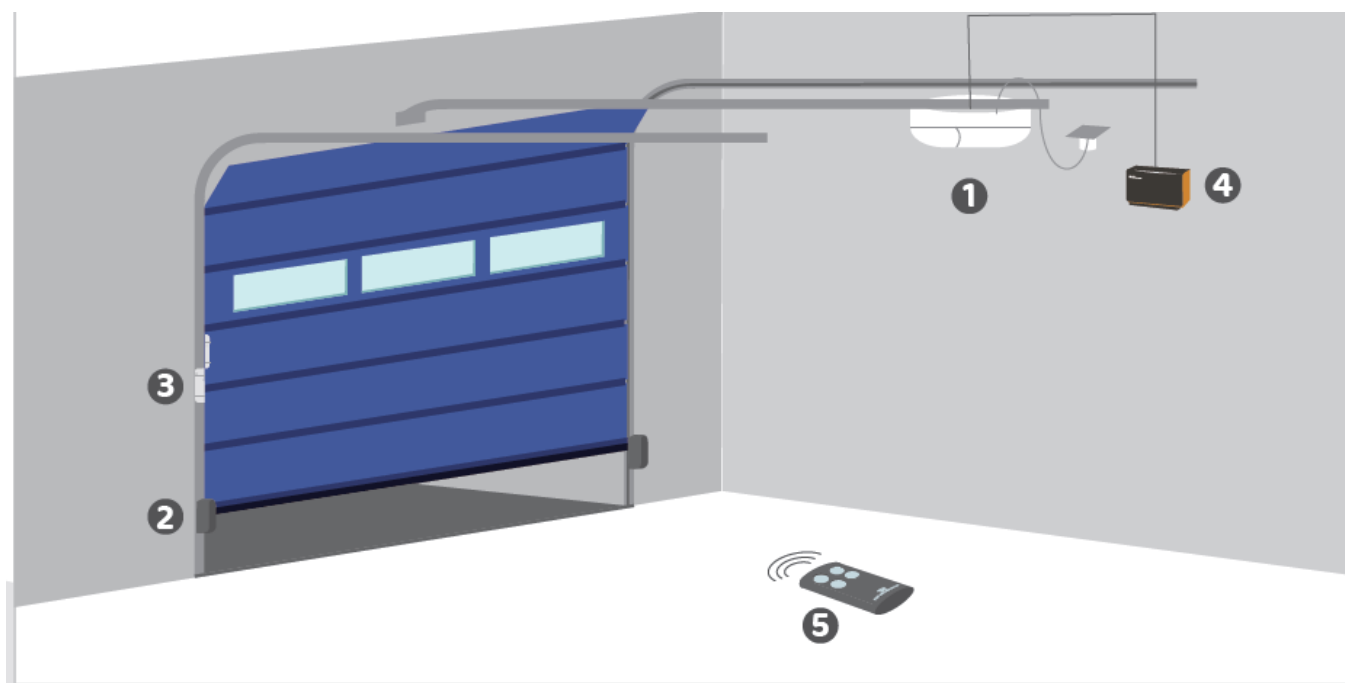
1. Pull out the isolation plate, and the LED will turn ON when the trigger close to the sensor.
2. Install the sensor at the door closed position.
3. Door sensor will send notification if battery capacity is lower than 20%

Connect the Door sensor to Chow! APP

1. Tap the ChowHUB icon on the main page Entering the setting page
Tap the (Edit or Add devices) Tap the (Pairing)
2. Align the trigger and sensor till the LED on the door sensor is ON.
3. The App shows (Learn Successfully).
4. The door sensor is recommended to be installed at the closed position of the gate or garage door




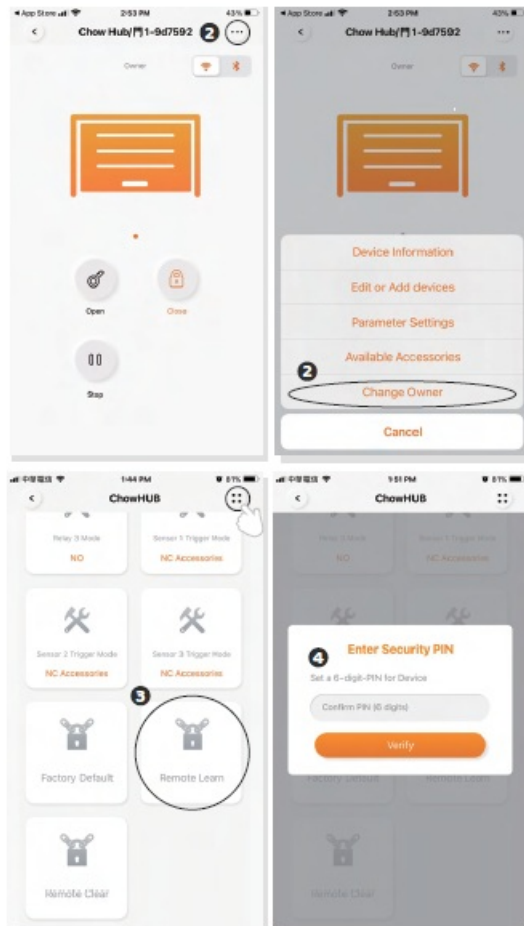
*** Please set stopper at the open limit position of the rack and after the setup is completed , then garage door opener can start the system learning process.***



1. Cobble Garage Door Opener
2. Photocells (Optional accessories)
3. Door status sensor
4. ChowHUB
5. Transmitter

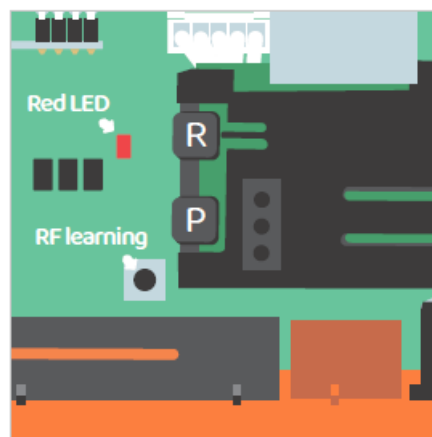
Pairing remotes

1. Please enter the Chow! App and tap on the ChowHUB icon on the main page
2. Please enter the setting page by tap the  icon
3. Enter the advanced page by enter the PIN code and find the remote learn function
4. Tap the remote learn and enter the PIN code again
5. Start the remote learn by tap the icon and the push notification will show start remote learning
6. Press any button of a remote and the push notification will show pairing success.
7. After 10 seconds, the remote learning mode will end automatically.

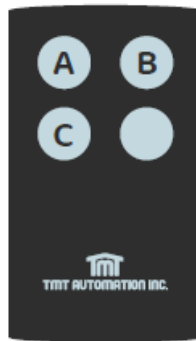


Pairing remotes with ChowHUB

1. Press the RF learning button for 3 second the red LED will turn ON.
2. Press any button of a remote and the red LED will blink.
3. After 10 seconds, the red LED will turn OFF and end the remote learning mode.



Pairing remotes with Chow! App



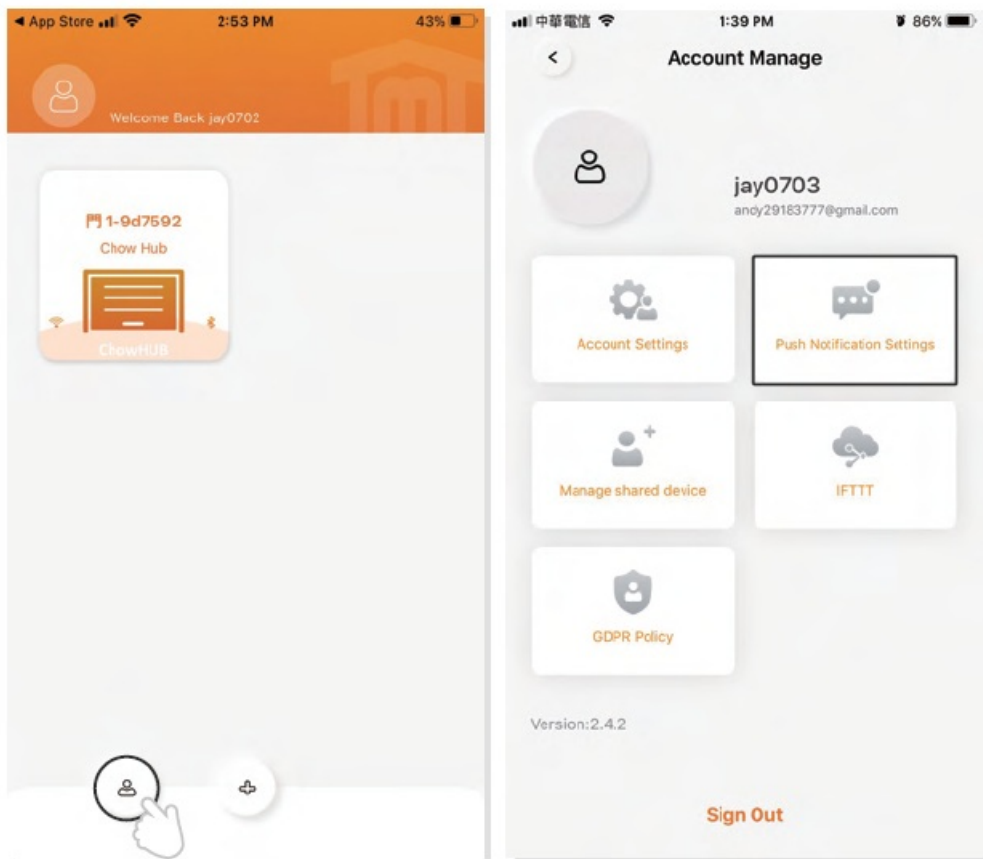
- A button: Trigger terminal 1,2
- B button: Trigger terminal 3,4
- C button: Trigger terminal 5,6

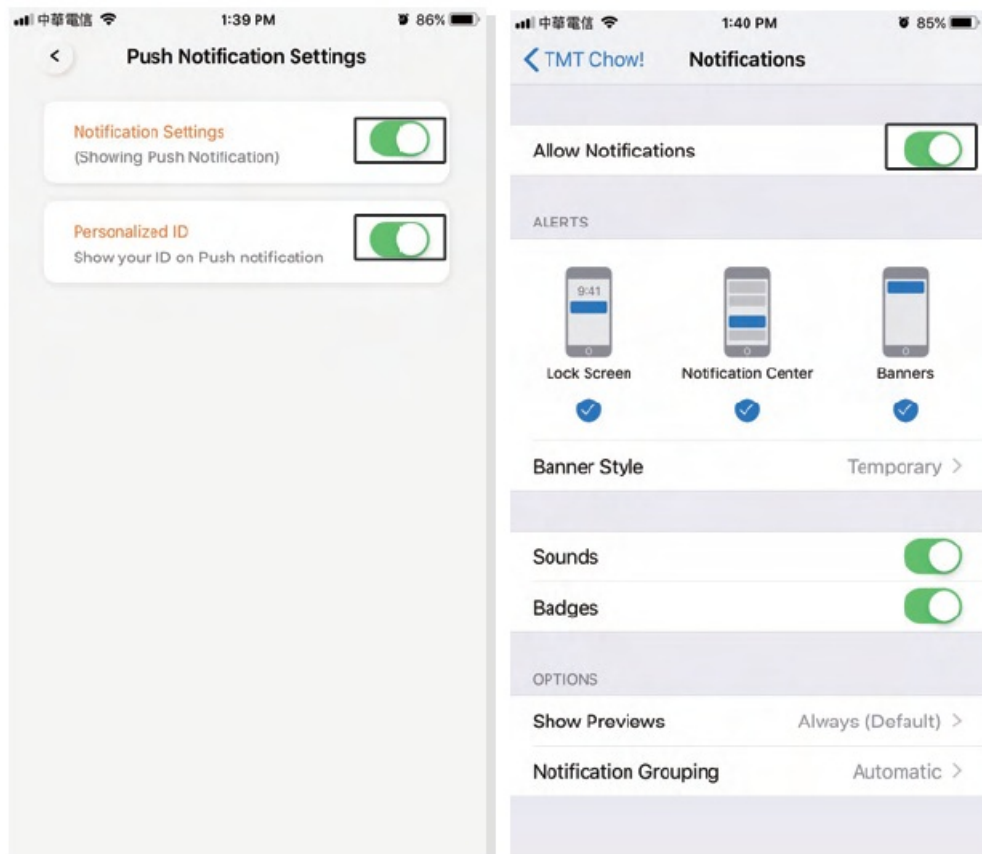
Account management page

Push notification

1. Press the icon at the button left to enter the account management page.
2. Tap the push notification setting.
3. Turn ON the switches of the notification.

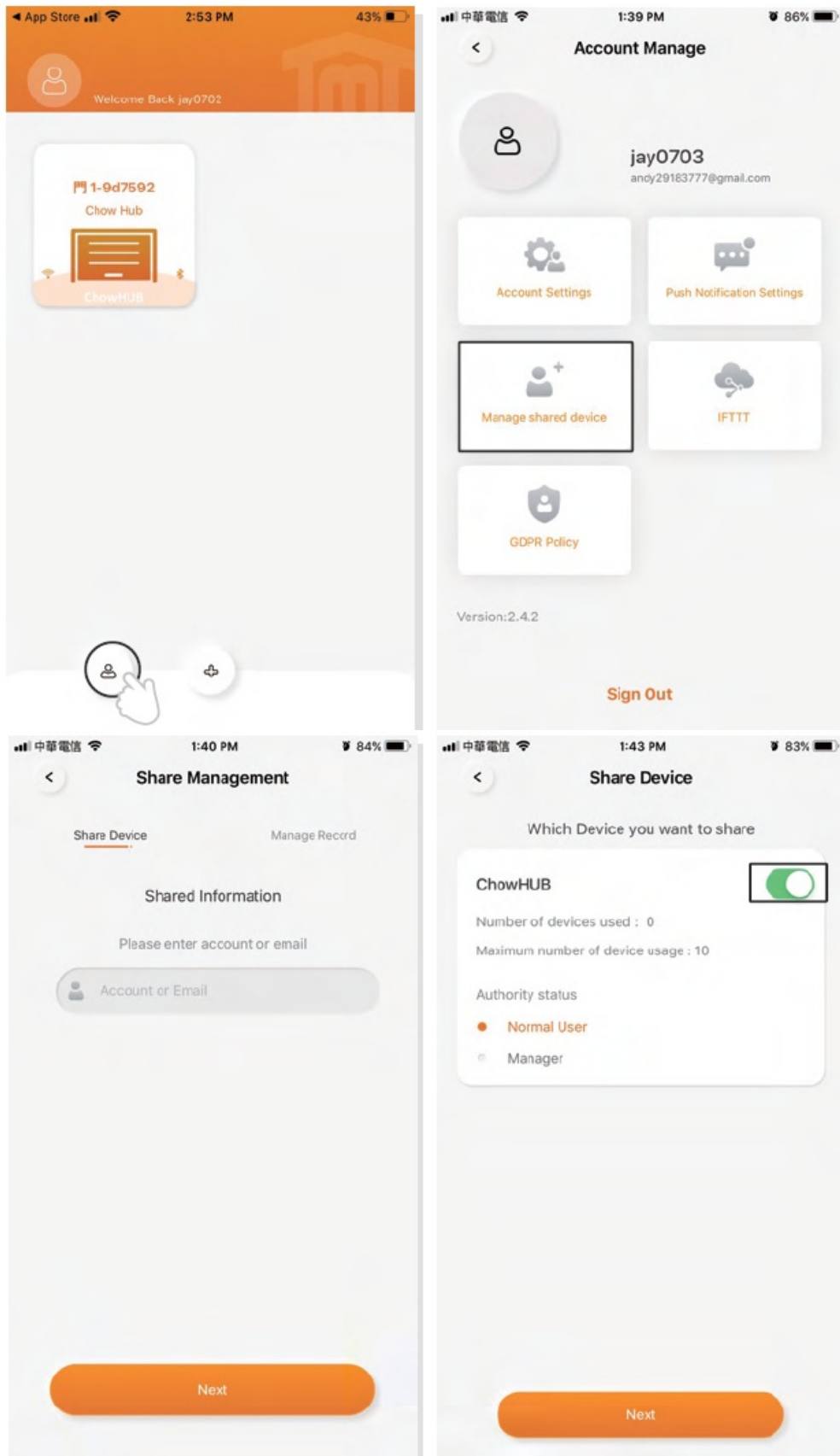
** Please go to the settings page of your smartphone. Find TMT chow and allow the notifications.***





Owner shares device

1. Press the icon at the button left to enter the account management page.
2. Tap the manage shared device.
3. Enter the account which you are going to share.
4. Choose the device you are going to share and tap next.



FAQ

Question 1

The blue LED is NOT blinking when the ChowHUB connects to the power plug.

Answer 1

Press the P button and the blue LED will blink.

Question 2

Blue and green LED blinks alternatively when connecting to Chow! App by the first user.

Answer 2

Entering a wrong password to your Wi-fi network.

Question 3

Red LED blinks when connecting to Chow! App by the first user.

Answer 3

The ChowHUB cannot identify the IP from the router.

Please turn off the router, turn on, and then reconnect again. Or please connect to other router.

Question 4

Red LED blinks when Enter the PIN code.

Answer 4

Entering the wrong PIN code. Please confirm the correct PIN code with the first user.

Question 5

Green LED blinks.

Answer 5

The Wi-Fi signal is weak. Please adjust the antenna of the ChowHUB or adding an Wi-Fi amplifier to enhance the Wi-Fi signal.

Question 6

Red LED stays ON.

Answer 6

Red LED stays ON indicates a system error. Please press the R button .

Question 7

Default to factory setting.

Answer 7

Default to factory setting will be applied when you lose your PIN code for sharing the device. After defaulting, please follow the previous indications to reconnect the ChowHUB to Wi-Fi network.

1. Tap the ChowHUB icon on the main page for 3 seconds and delete the ChowHUB
2. Open the ChowHUB, press the button for 5 seconds and release it. The Green LED will blink once.
3. Press the button. When the Blue LED blinks, it means the ChowHUB is successfully defaulted.

Question 8

Change the PIN code.

Answer 8

Enter the operation page of the device in Chow! App Tap the (Device information) in the setting page Tap (Pin code Setting) to set a new PIN code

Question 9


Change to another Wi-Fi network.

Answer 9

Enter the operation page of the device in Chow! App Tap the (Device information) in the setting page Tap the Wi-Fi icon to change to another Wi-Fi network

www.tmt-automation.com

Documents / Resources

	<p>TMT AUTOMATION ChowHUB Smart Wi-Fi Garage Door Opener [pdf] User Manual</p> <p>WBT, ChowHUB, ChowHUB Smart WiFi Garage Door Opener, Smart WiFi Garage Door Opener, WiFi Garage Door Opener, Garage Door Opener, Door Opener</p>
--	---

References

-  **[TMT AUTOMATION INC.](#)**