



TMEZON MZ-VDP-NE202 4-Wire Digital Analog Hybrid System User Guide

[Home](#) » [TMEZON](#) » TMEZON MZ-VDP-NE202 4-Wire Digital Analog Hybrid System User Guide 

Contents

- 1 [TMEZON MZ-VDP-NE202 4-Wire Digital Analog Hybrid System](#)
- 2 [Product Information](#)
- 3 [Product Usage Instructions](#)
- 4 [Description on indoor monitor](#)
- 5 [Wiring diagram](#)
- 6 [Specification for indoor monitor](#)
- 7 [Install the indoor monitor](#)
 - 7.1 [Wiring diagram for outdoor doorbell](#)
- 8 [Operation mode for outdoor doorbell](#)
- 9 [Menu operation](#)
- 10 [Setting](#)
- 11 [Live view on the monitor](#)
- 12 [Connect the network for the indoor monitor](#)
- 13 [Function description for the app](#)
- 14 [Documents / Resources](#)
 - 14.1 [References](#)
- 15 [Related Posts](#)



TMEZON MZ-VDP-NE202 4-Wire Digital Analog Hybrid System



Product Information

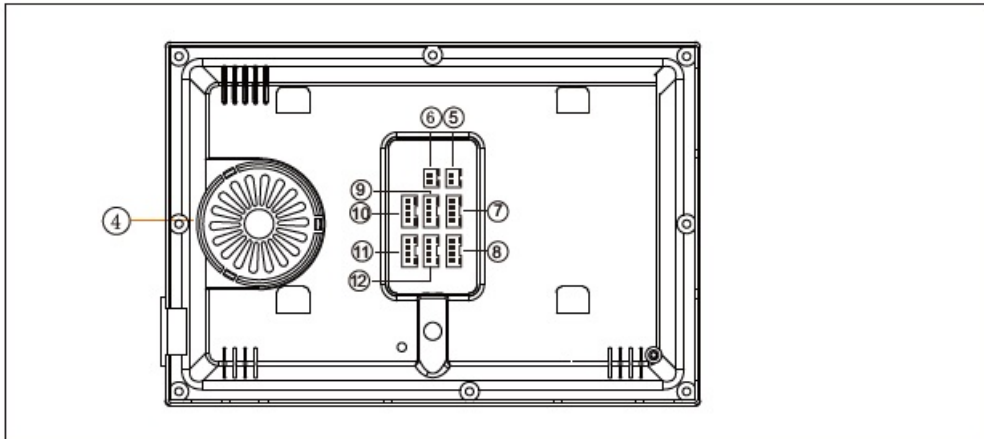
The product is a 4-wire digital-analog hybrid system that supports AHD/TVI/CVI 2MP resolution and Tuya Smart App. The indoor monitor has a model number MZ-VDP-NE202 and features a microphone, SD card slot, TFT LCD, speaker, power interface, independent unlock, IN and OUT connections, CAM1 and CAM2, DOOR1 and DOOR2, status and door indicators, lens/camera, IR-LED, RFID-card induction area, nameplate display area, call button, set button, door unlock delay adjustment, speaker volume adjuster, fingerprint sensing area, port for EXIT switch, and power interface for the doorbell. The outdoor doorbell has a sensor area with a resolution of 1920 X1080 PAL/NTSC and a standard view angle of 150 degrees. It has a standby current of Max60mA and work current of Max200mA. It requires a DC12V power supply and has a work temperature range of -40~+50 C. It can store up to 200 passwords and RFID cards and has a fingerprint capacity of up to 200.

Product Usage Instructions

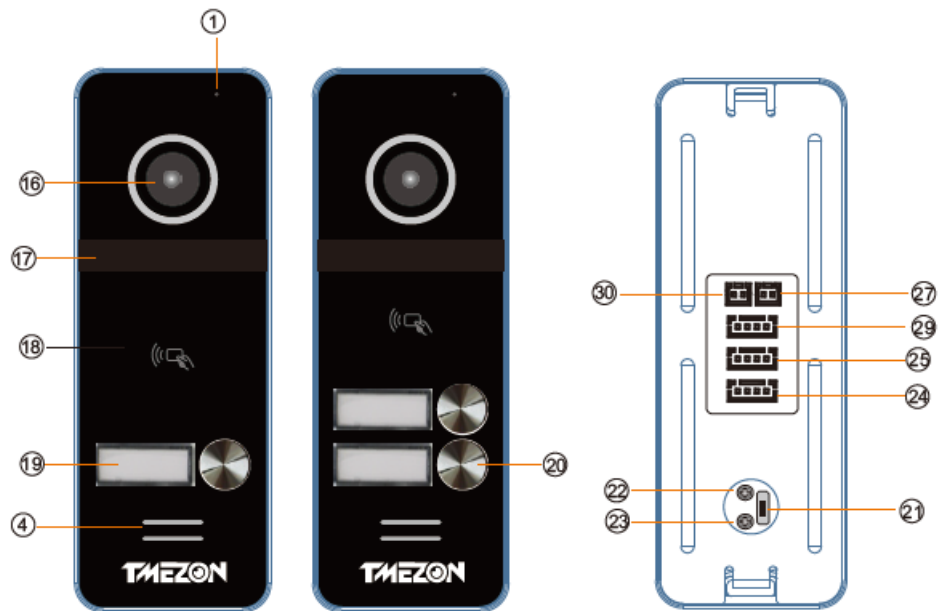
Follow the below instructions to use the product:

1. Install the indoor monitor by connecting it to the power supply using the DC-IN:12V-15V power interface.
2. Connect the outdoor doorbell to the indoor monitor using the wiring diagram provided in the manual. Pay attention to the name marked on the sticker of the machine to avoid wrong connection.
3. Install the outdoor doorbell using either Method A (Hatch Flush casing or Hatch Hole) or Method B (Angle bracket Flush casing).
4. Keep the devices away from intense radiation sources like TV, DVR, and AC power to avoid interference.
5. Do not disassemble the devices privately to avoid electric shock.
6. Avoid dropping, shaking, or knocking the devices as it may damage the elements.
7. Choose the best position to install the devices, keeping the horizontal view at 150cm.
8. Power down the devices before installation.
9. Keep the devices away from water, magnetic fields, and chemicals.
10. In case of any problems during installation or usage, send an email to the support team at support@tmezon.com for assistance.

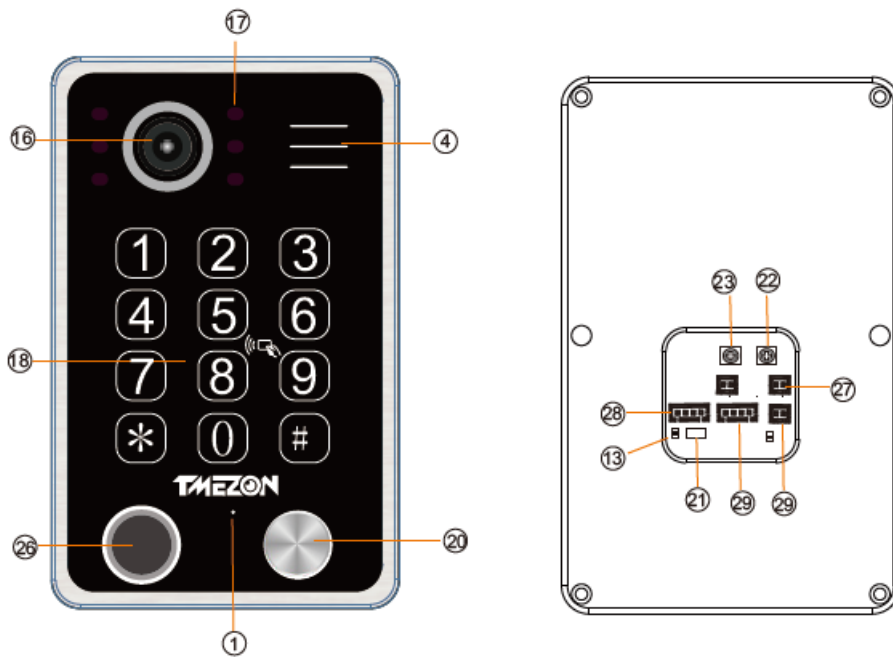
Description on indoor monitor



Model: MZ-VDP-NE202



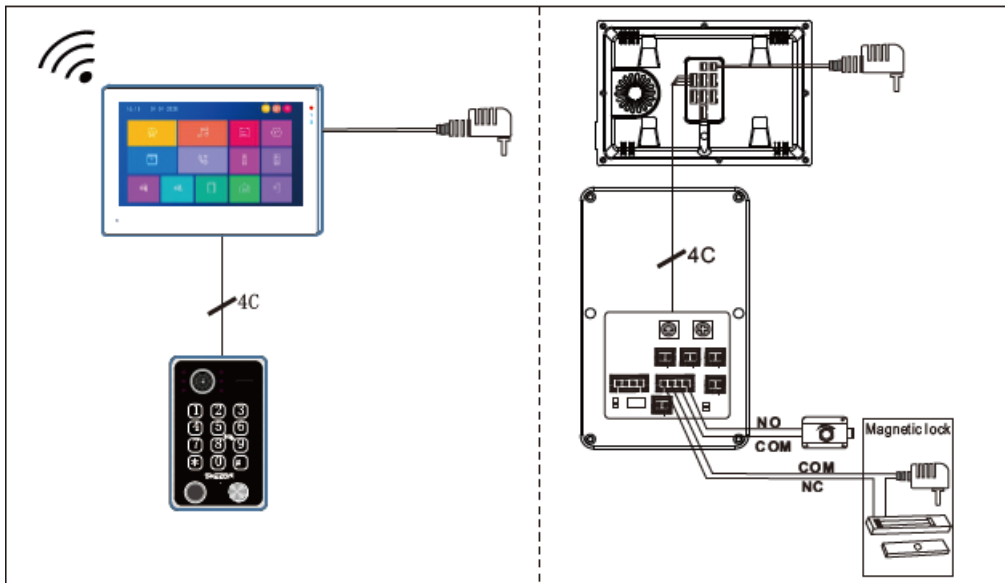
Model: MZ-VDP-NA262F



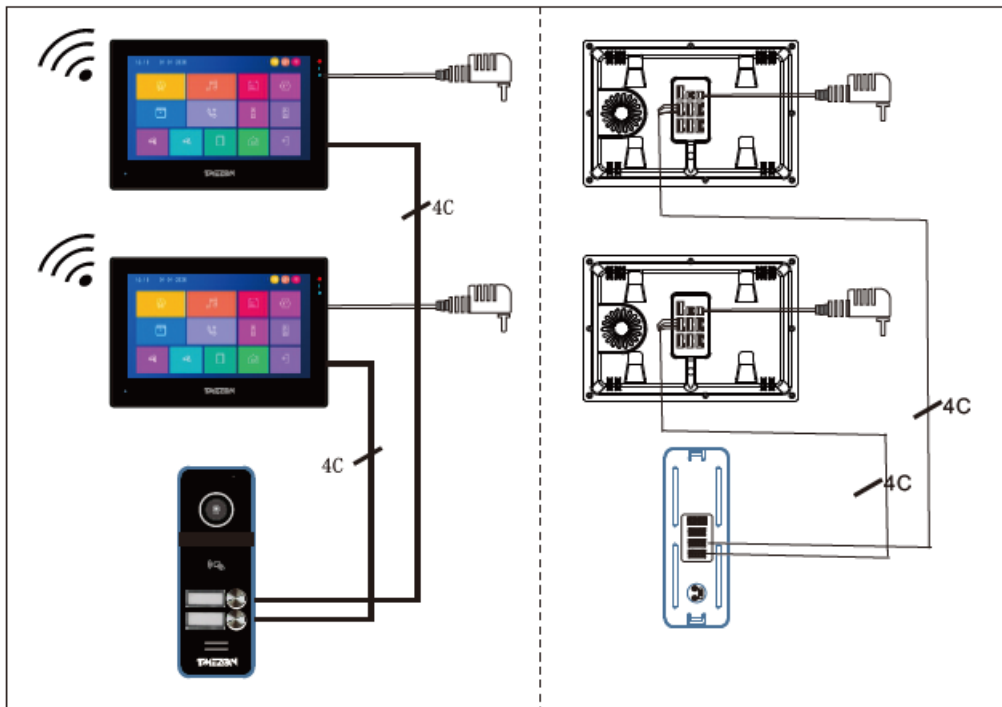
1	Microphone
2	SD card slot
3	TFT LCD
4	Speaker
5	Power interface for the monitor: DC-IN:12V-15V
6	Independent Unlock
7	IN (Connect the Slave monitor)
8	OUT (Connect the next indoor monitor)
9	CAM1
10	DOOR1
11	DOOR2
12	CAM2
13	Status indicator
14	DOOR1 status indicator
15	DOOR2 status indicator
16	Lens/Camera
17	IR-LED
18	RFID-card induction area
19	Nameplate display area
20	Call button
21	Set button
22	Door unlock delay adjustment
23	Speaker volume adjuster
24	Connect to Monitor 1
25	Connect to Monitor 2
26	Fingerprint sensing area
27	Port for EXIT Switch
28	Connect to the monitor
29	Connect to the doorlock
30	Power interface for the doorbell: DC-IN:12V-15V

Wiring diagram

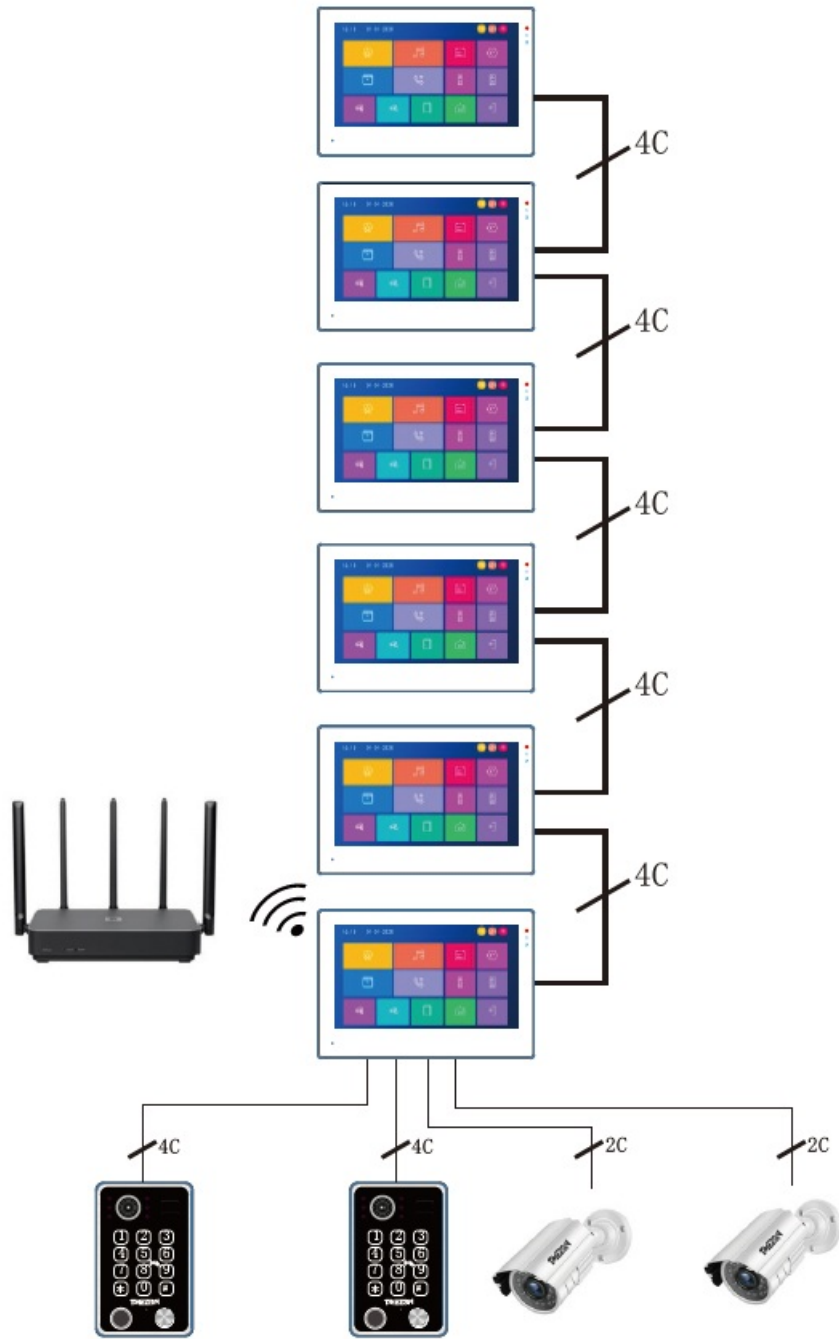
1*10" Monitor+1* Outdoor doorbell

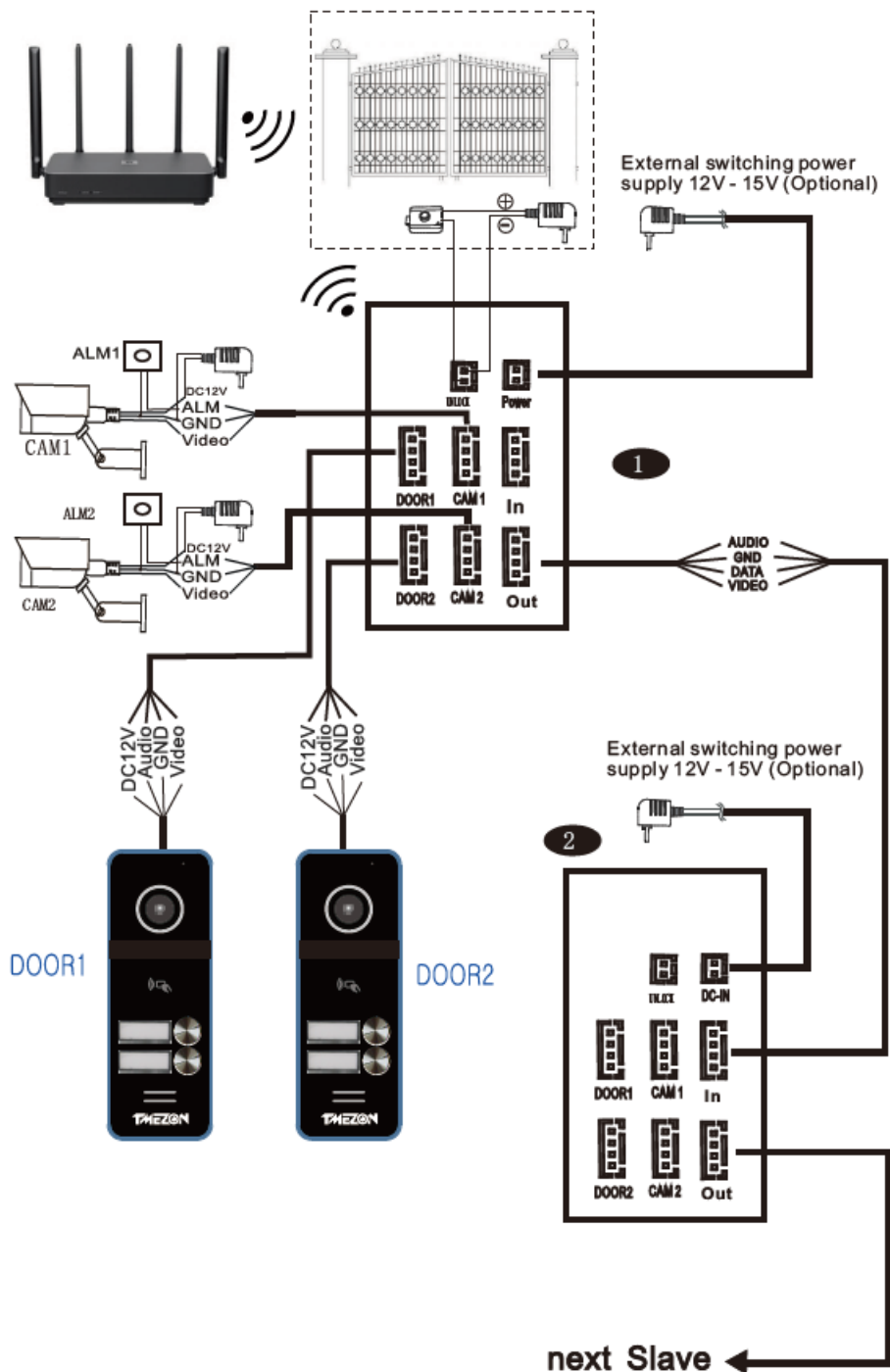


2 *7" monitors +1* Outdoor doorbell



1 Master Monitor+5 slave monitors+2 Outdoor doorbells + 2 CCTV Cameras





Note on wiring connection

Please pay attention to the name marked on the sticker of the machine to avoid wrong connection. Wiring requirements (The actual effect and the quality of wire rod has the very big relations):

1. 4 core ordinary unshielded and shielded wiring cable;
2. The effective distance from the outdoor camera to the furthest indoor monitor:
 1. Transmission <math>< 30\text{m}</math> (4×0.4mm)
 2. Transmission <math>< 60\text{m}</math> (4×0.65mm)



3. If you want to extend the distance to more than 60m, it is best to choose thick copper core cable, shielded wire or 3-core ordinary unshielded wire + 75-3 video cable. Connect the shield terminal to GND.

Three-wire unshielded cable + SYV75-3 video cable



Integrated video surveillance cable with power cord(2×0.5mm +75-3)



4. If user wants to use CAT5 or CAT6 network cable, effective distance from the outdoor camera to the furthest indoor monitor will be limited. For unshielded network cable, the distance will be up to 20m. For shielded network cable, the distance will be up to 40m. So CAT5 or CAT6 network cable is not recommended. CAT5 or CAT6 network cable consists of 4 pairs of twisted pairs(8 wires), here one pair of twisted pair will be used as one cable. Green & White+Green, Brown&White+Brown, Orange&White+Orange, Blue&White+Blue

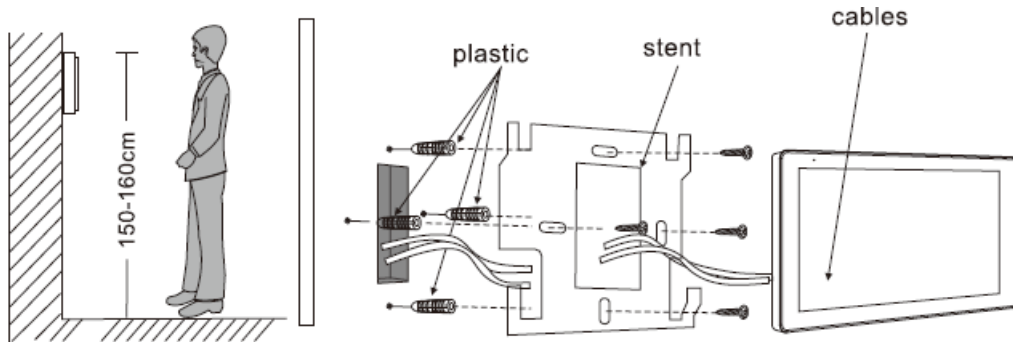


If it is a shielded wire, it must be connected to GND.

Specification for indoor monitor

Display screen	7" / 10. 1"
Definition	1024x600x3RGB
Standard	PAL/NTSC
Calling mode	Two-way conversation
Calling time	>120S
Standby current	Max 300mA
Work current	Max 800mA
Power supply	External switching power Supply(DC12V-15V)–Optional
Work temperature	0~+50 C
Installation way	Surface mounting
SD Max capacity	128GB(FAT) >Class10
Video format	AHD/CVI/TVI/CVBS
Resolution	1080P/960P/720P/480P

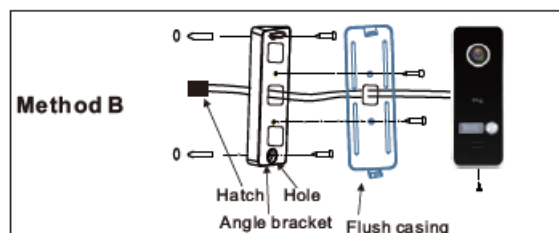
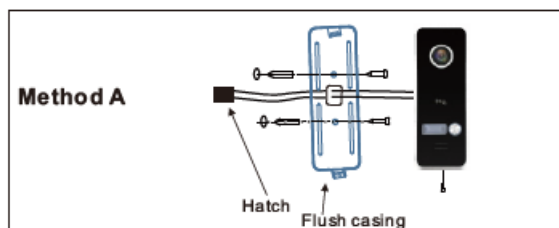
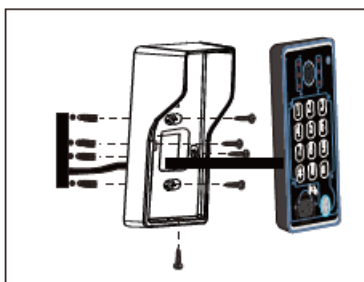
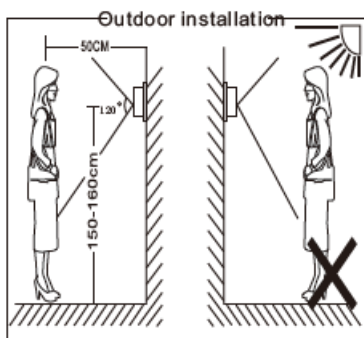
Install the indoor monitor



Specification for doorbell

Sensor area	1/2.9"
Resolution	1920 X1080
Standard	PAL/NTSC
View angle	150
Standby current	Max60mA
Work current	Max200mA
Power supply	DC12V
Work temperature	-40~+50 C
Password capacity	Max 200PCS
RFID card capacity	Max 200PCS (IC card, 13.56Mhz)
Fingerprint capacity	Max 200PCS

Install the outdoor doorbell

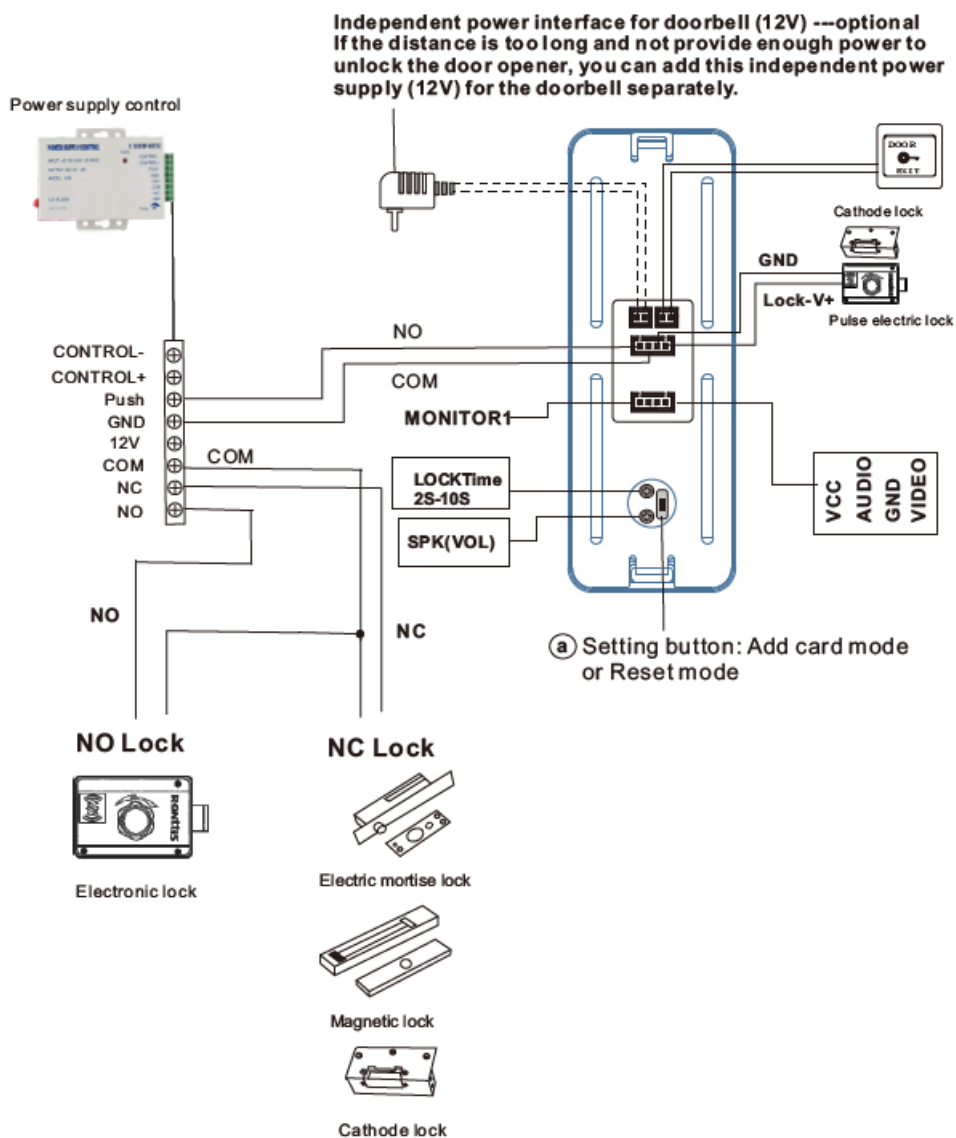


1. Please be far from the devices with intense radiation: TV, DVR, etc.

2. Do not disassemble privately to avoid the electric shock.
3. Do not drop, shake or knock the device, otherwise will damage the elements.
4. Choose the best position to install, the horizontal view is 150cm.
5. Please power down before installation.
6. Keep at a distance of more than 30cm with AC power to avoid interference.
7. Away from the water, magnetic field and chemicals

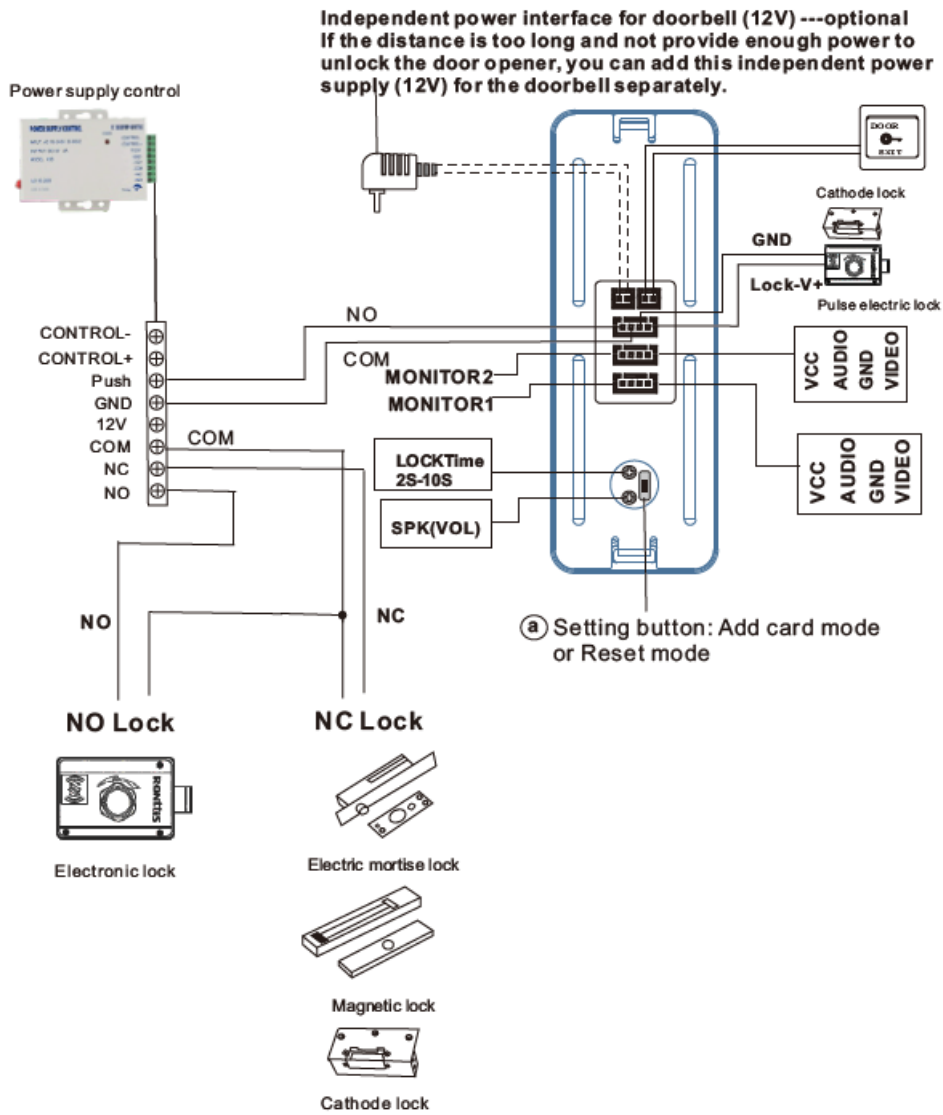
Wiring diagram for outdoor doorbell

Model: MZ-VDP-NE201



1. **Mode to add RFID card:** In standby mode, short press the setting button, enter the mode to add RFID card, swipe RFID card in the card swiping area, you can add a card, you can Repeat the RFID card to add more RFID cards, and then press the set button to exit the mode to add RFID card.
2. **Reset mode:** In standby mode, press and hold the setting button for 3 seconds to enter reset mode, then press the setting button three times, you will hear a sound, all card numbers will be deleted, and it will return to standby mode.

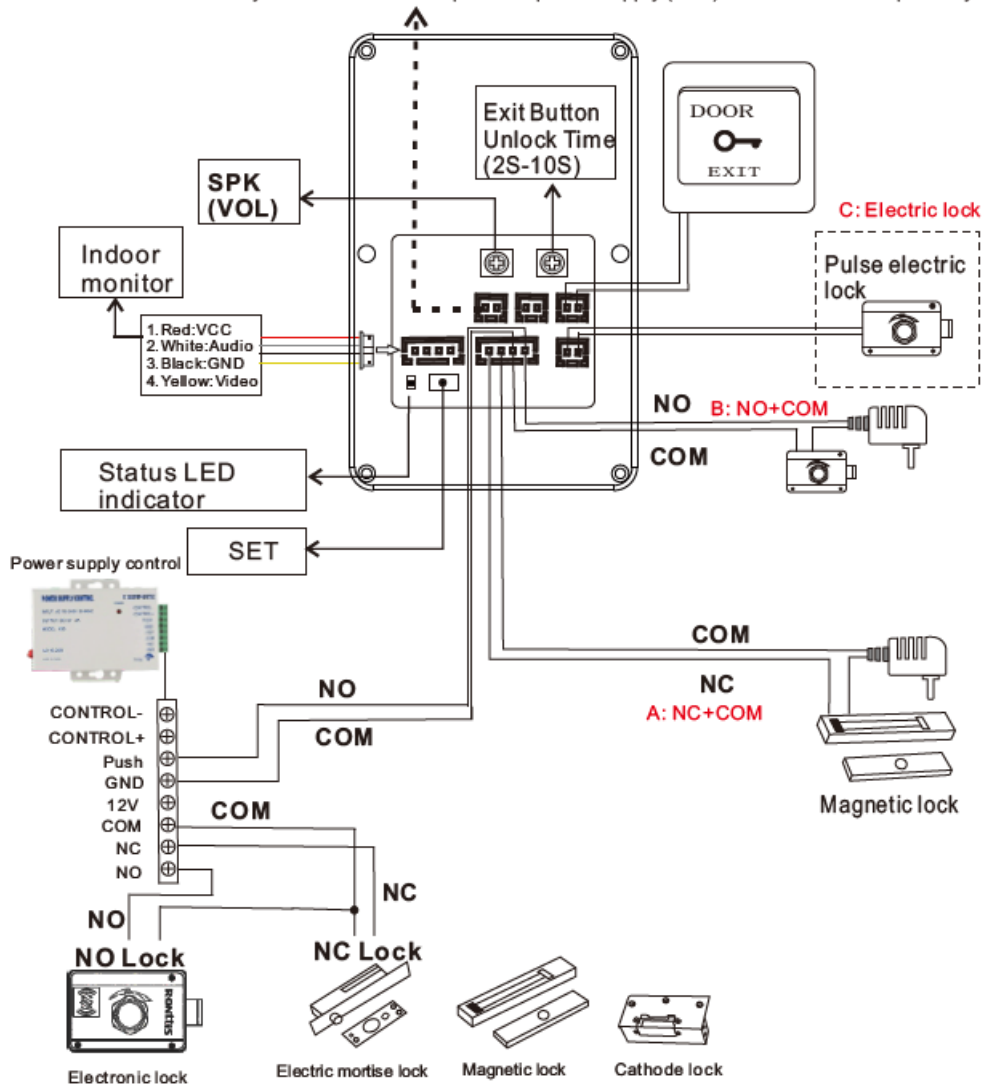
Model: MZ-VDP-NE202



- Mode to add RFID card:** In standby mode, short press the setting button, enter the mode to add RFID card, swipe RFID card in the card swiping area, you can add a card, you can Repeat the RFID card to add more RFID cards, and then press the set button to exit the mode to add RFID card.
- Reset mode:** In standby mode, press and hold the setting button for 3 seconds to enter reset mode, then press the setting button three times, you will hear a sound, all card numbers will be deleted, and it will return to standby mode

Model: MZ-VDP-NA262F

Independent power interface for doorbell (12V) ---optional
 If the distance is too long and not provide enough power to unlock the door opener,
 you can add this independent power supply (12V) for the doorbell separately.



1. **Type A:** NC+COM, it requires extra power supply for the lock itself only
2. **Type B:** NO+COM, it requires extra power supply for the lock itself only
3. **Type C:** For long distance connection between the monitor and the outdoor station, in case outdoor station can not get enough power from the monitor for normal working, it is suggested to provide DC12V power supply to the Power-In terminal, here the doorlock itself does not need extra power supply
4. Reset to factory setting: In standby mode, press and hold the setting button for 3 seconds to enter reset mode, then press the setting button three times, you will hear a sound, all configurations of RFID cards, fingerprints and password will be deleted, the doorbell will return to standby mode.

Operation mode for outdoor doorbell

Model: MZ-VDP-NA262F

1: Modify the administrator password

123456 + # + 0 + # + XXXXXX + # + *

Administrator password

new password

2: Add unlock password

123456 + # + 1 + # + XXX + # + XXXXXX + # + **

Administrator password

1: Mode to add new password

Serial number

new password

Example: serial number 012 password 222333

123456 + # + 1 + # + 012 + # + 222333 + # + **

3: Add RFID card unlock

123456 + # + 3 + # + XXX + # + RFID card  + # + **


Administrator password

3: Mode to add RFID card

Serial number

Swipe RFID card directly

4: Add fingerprint unlock

123456 + # + 5 + # + xxx + # +  + # + **

Administrator password

5: Mode to add fingerprint

serial number

Please record every direction of your fingers as much as possible, record at least 2 fingers

5: Delete password/RFID/fingerprint user

Delete by serial number

123456 + # + 2 / 4 / 6 + # + XXX + # + **

Administrator password

2: Delete password
4: Delete RFID
6: Delete fingerprint

serial number

Clear users by category

123456 + # + 2 / 4 / 6 + # + 99 + # + *

Administrator password

2: Delete password
4: Delete RFID
6: Delete fingerprint

99 is delete all

Long press the setting button on the back of the device for 3S, then short press the setting 3 times to restore to the factory mode

Backlight LED settings

123456 + # + 7 + # + 00 / 01 / 02 + # + *

00: Closed in any state
01: It lights up in any state
02: Closed at standby mode, lights up at working

Menu operation



①		Red means that motion detection of this channel is turned on, Gray means that motion detection of this channel is turned off
②		1: At home mode, normal working state. Notification will be pushed to the mobile phone. 2: Not at home mode, directly open the message reminder, visitors can record the message with video. Notification will also be pushed to the mobile phone. 3: Sleep mode: There will be no ringing inside and outside. The notification will be pushed to the mobile phone when the doorbell is pressed
③		Network connection status indication
④		Call log files.
⑤		Message record files.
⑥		Motion detection record files.
⑦		Alarm log files.

Menu styles

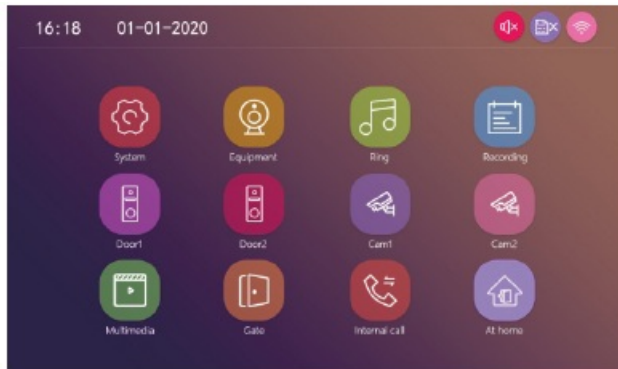
1. Win 10 style



2. Android style



3. Standard style



Three styles of interface can be set through the menu. No need to restart the monitor

Setting



System

1. Please format the SD card with the device.
2. Restore factory settings: All parameters are restored to factory mode. Note that TuyaSmart's device must be deleted together before it can be used again, otherwise it cannot be added and used by other accounts
3. The Device ID is an important configuration of the equipment in the system. It must be configured correctly, Otherwise it will not work properly. If the current device is connected to the Outdoor unit1, Device ID must be set to 1, and the others Slave monitors must be set 2/3/4/5/6, then work normally.

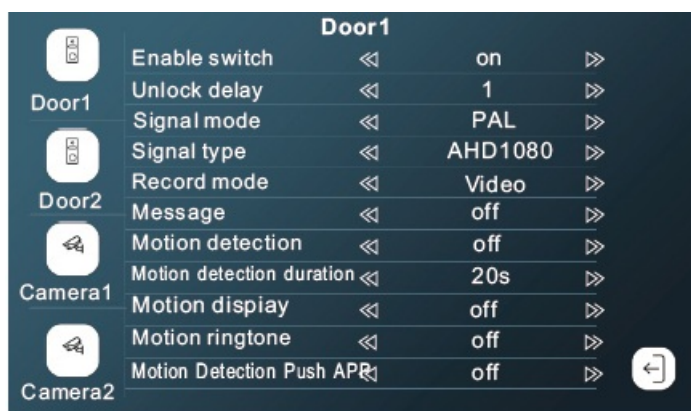
Time

1. **(Screen off):** Monitor will be off with no operation within 10s
2. **(Clock):** Time will be displayed on the screen at standby mode

Digital Frame

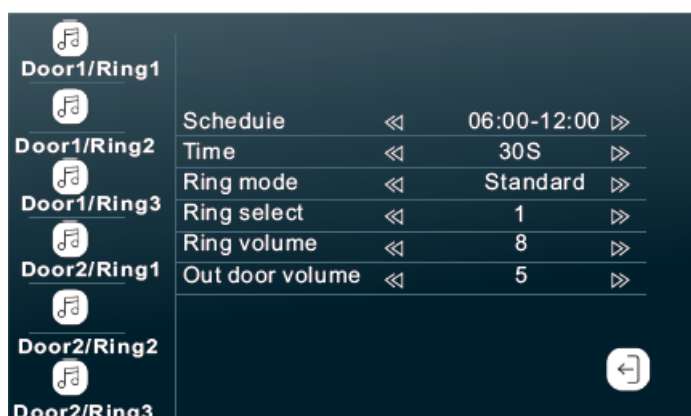
1. The picture file must be copied to the Digital Frame folder, the picture resolution must not be greater than: 2526×1576, the format is JPEG.
2. Long press the file to pop up the submenu, select “Delete” or “Delete All”, and click the file to enter the playback interface

Devices



1. If the channel is closed, it will be skipped when monitoring the polling screen. This channel and APP will not display this channel. Please set it carefully.
2. When Motion Detection Push APP is closed, the phone will not receive any push information.

Ring



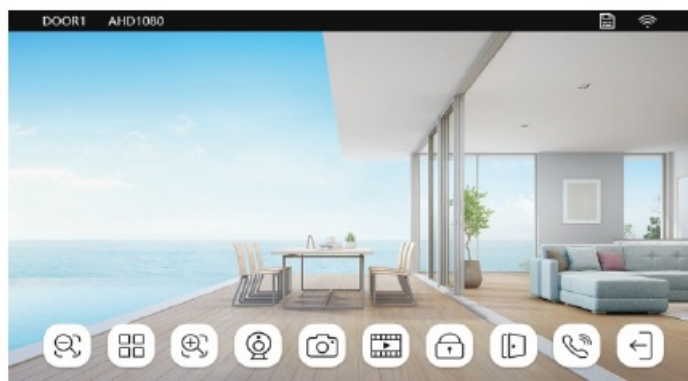
1. The ringtone of each channel can be set to three time periods, and different ringtone types and volume can be set, but it should, be noted that there can be no gaps and overlaps between the three time periods, otherwise the system will play the default parameters.
2. Please note that the volume setting of the Door bell cannot be greater than the volume of the indoor monitor.

Recording

Click the file to play directly, long press the file to enter the delete/read operation



Live view on the monitor



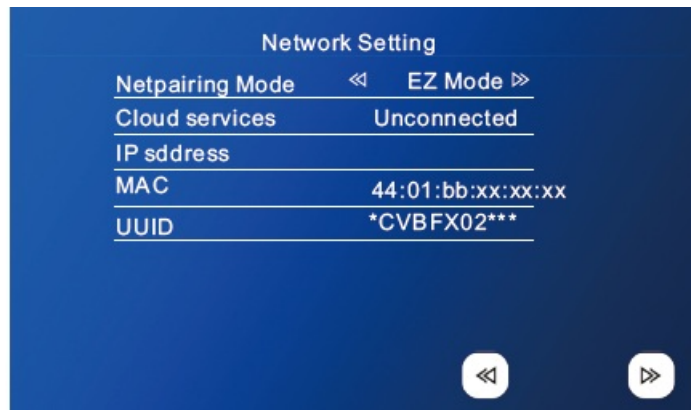
	Zoom out
	Volume, brightness, contrast, saturation
	Zoom in
	Switch to the next channel, Door1>Door2>Cam1>Cam2
	Snapshot
	Video
	Door 1/Door 2 unlock
	Release the door which connected to the indoor monitor
	Calling, Hang up/Return

Connect the network for the indoor monitor

- The app for the device is TuyaSmart. Please download the TuyaSmart app from Google Play Store or APP Store.
- The device only works with 2.4 GHz WiFi, not 5 GHz.
- User can configure the network for the monitor through AP mode or EZ mode.
- The mobile phone should be connected to 2.4 GHz WiFi first, then add the device to the app.

EZ mode

Select EZ mode and save it on the monitor, then add the device through app.



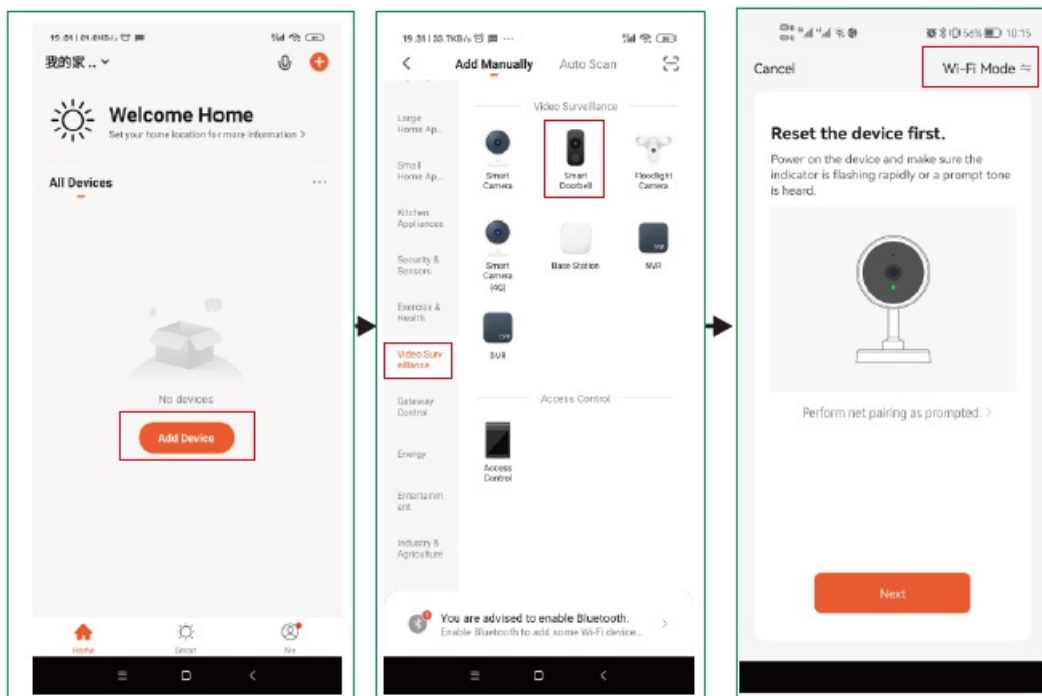
Add the device by EZ mode

EZ mode, only use the mobile phone to connect the WIFI router and match the WIFI password, as shown below

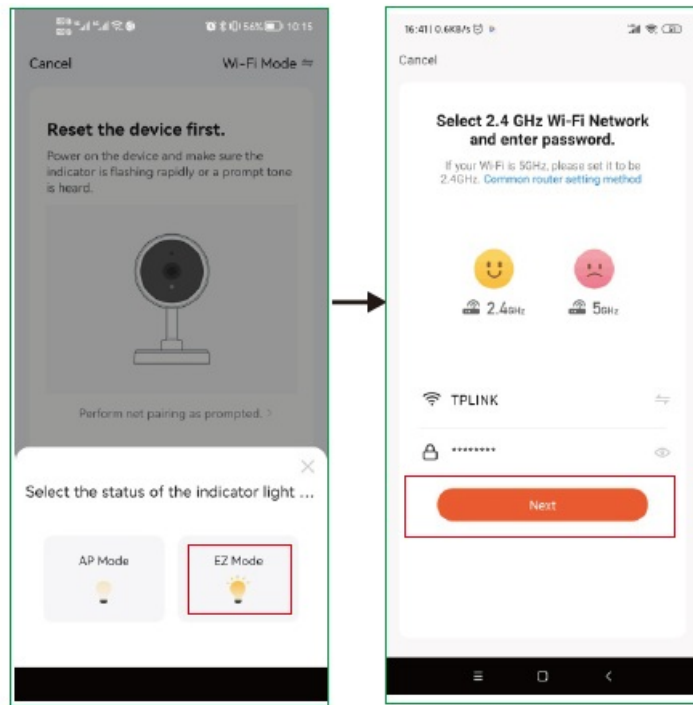
Scan QR code for tutorial video of the app connection through EZ mode



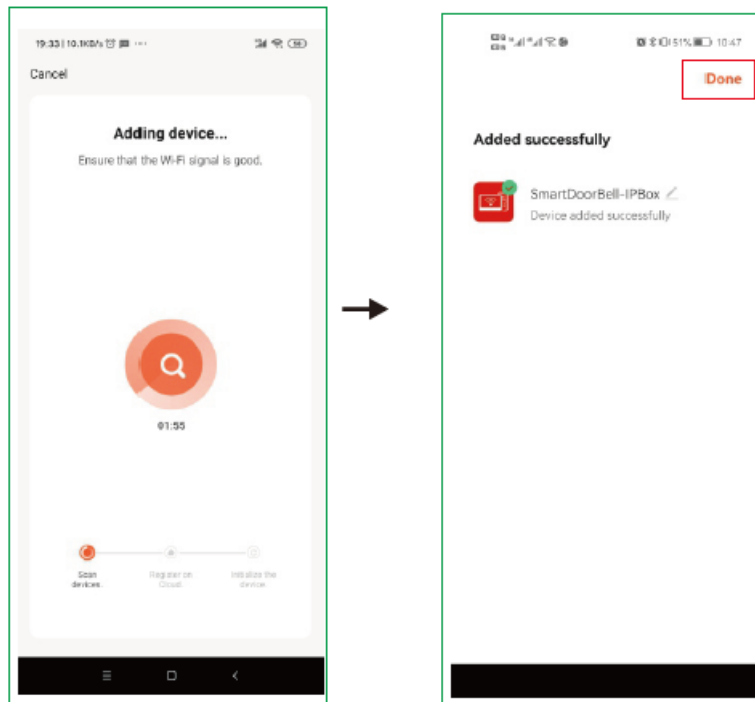
1. Open TuyaSmart and Add Device
2. Video Surveillance>Smart Doorbell
3. Select WiFi mode, click Next



4. Select EZ mode
5. Select 2.4Ghz WiFi network and enter password

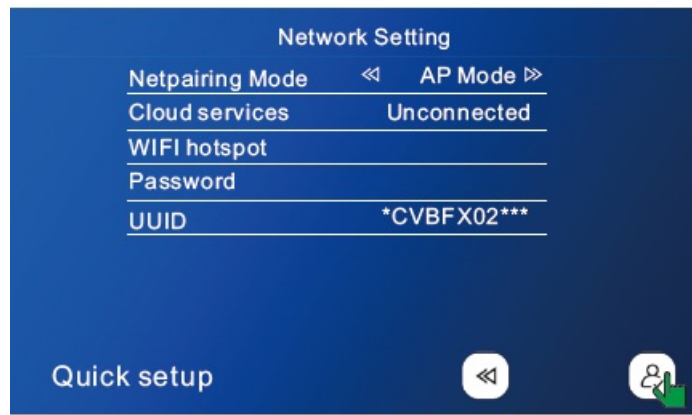


- 6. Adding device
- 7. Added successfully

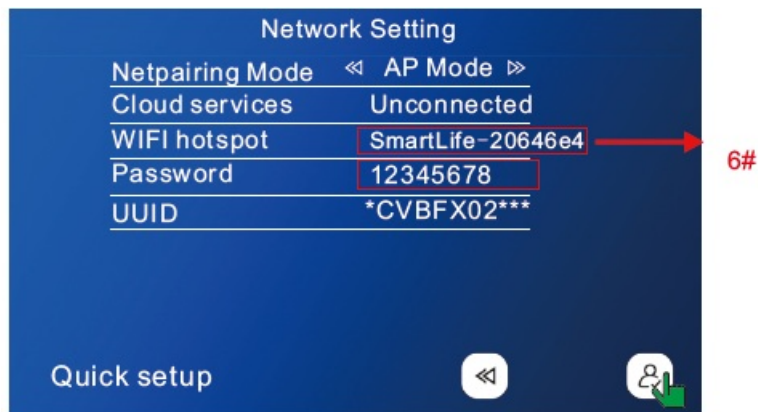


AP mode

To quickly configure the interface and configure the AP mode in (Settings>Network Interface), note: In (Settings>Network Interface), press the return button to restart the device. (Settings>Network Interface) view the WIFI hotspot name and password.



After restarting as prompted, enter the following interface in turn

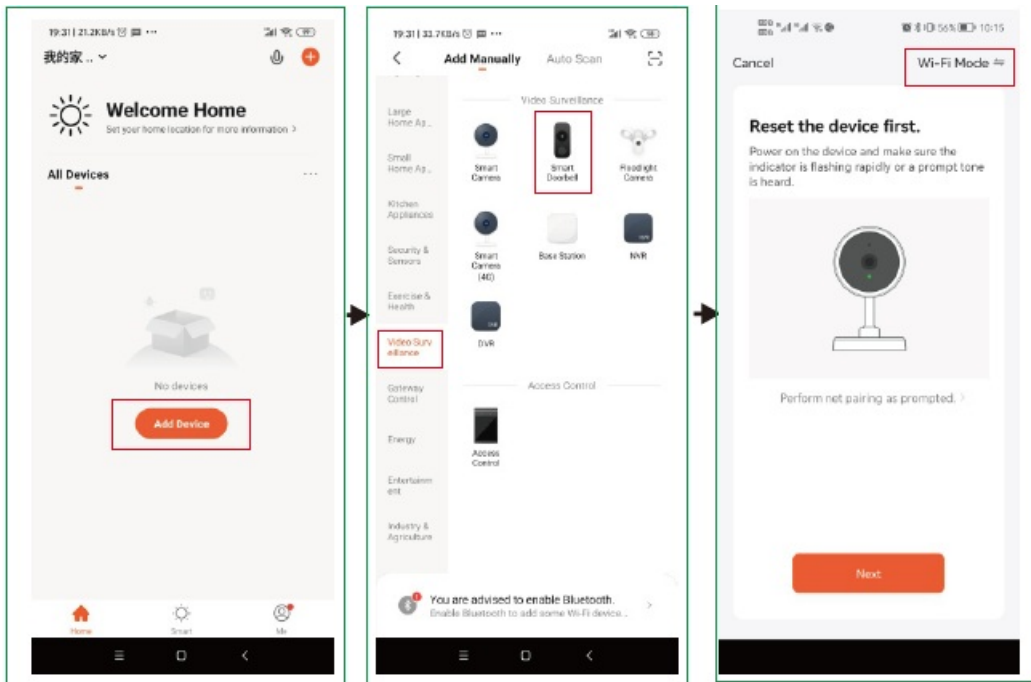


Tuya APP operates as follows

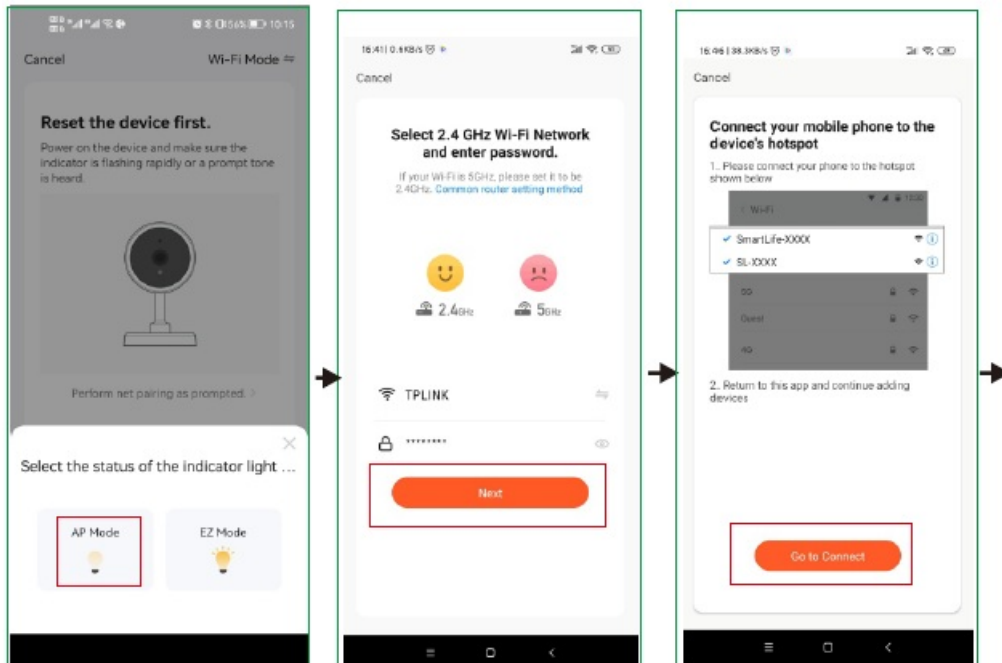
Add the device by AP mode



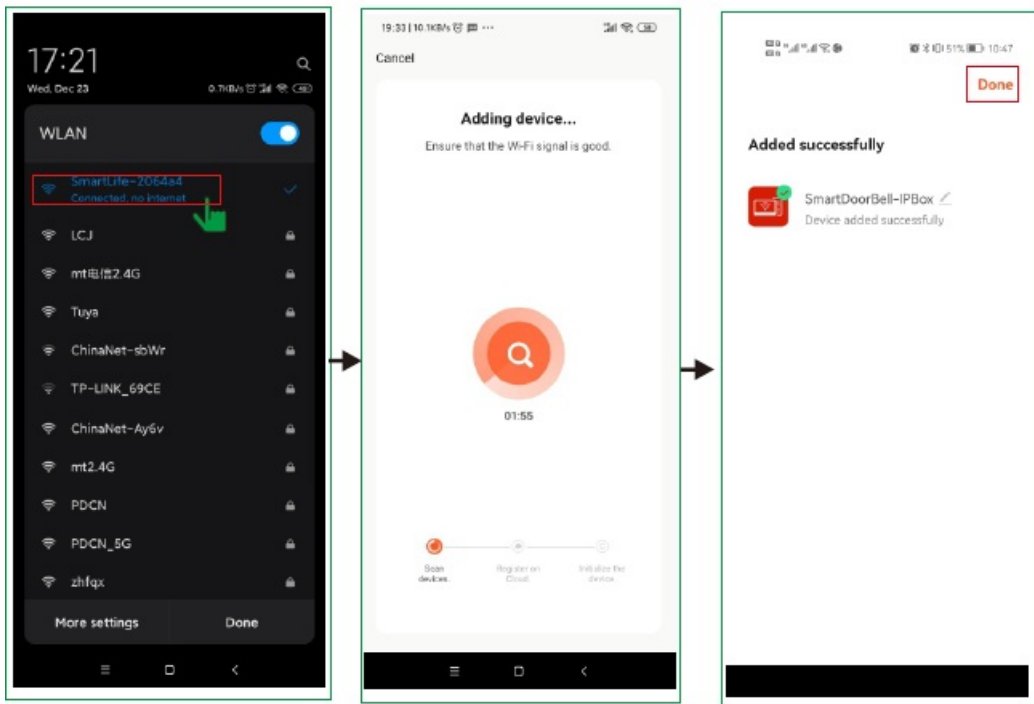
1. Open TuyaSmart and Add Device
2. Video Surveillance>Smart Doorbell
3. Select WiFi mode, click Next



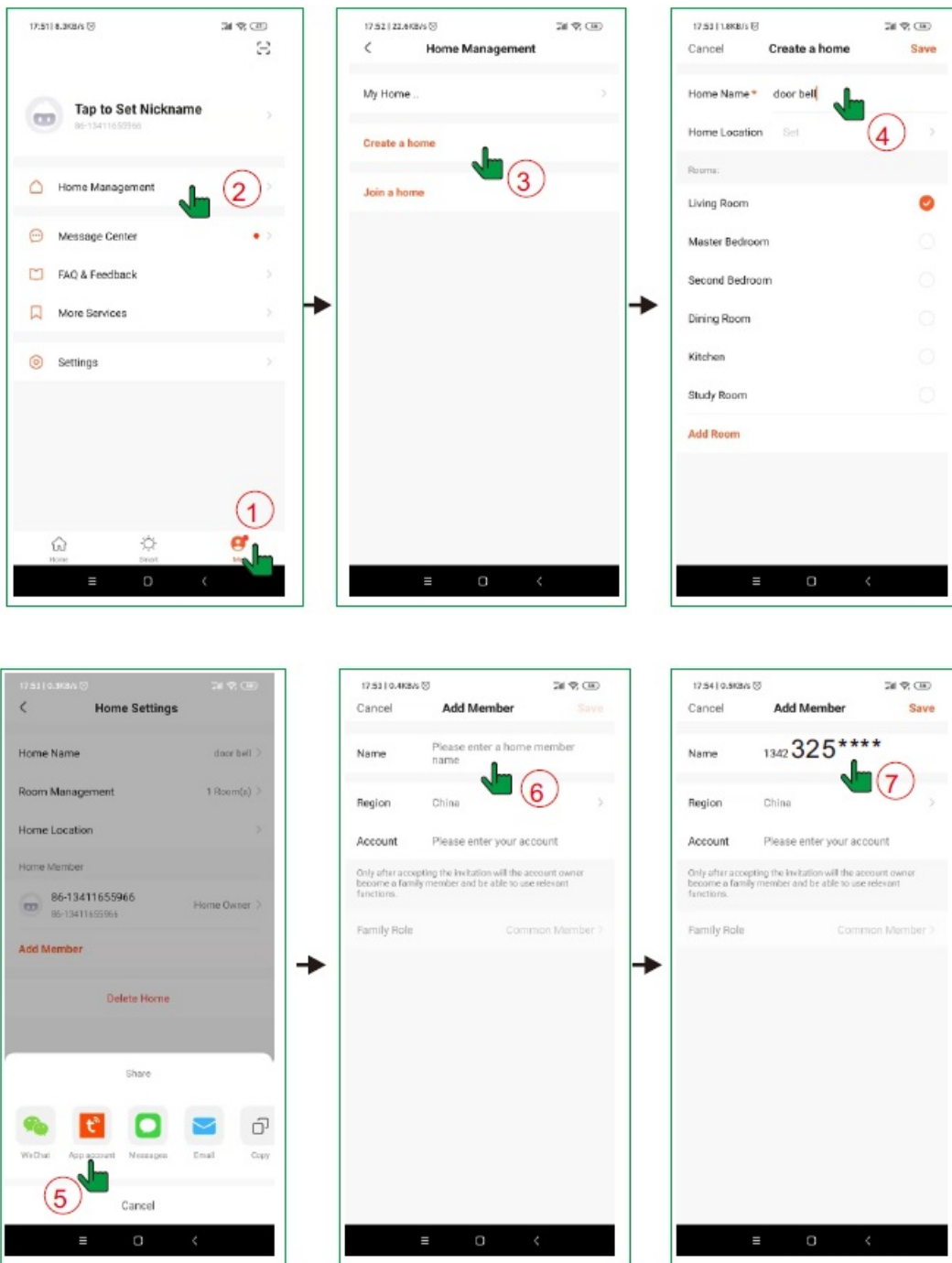
4. Select AP mode
5. Select 2.4Ghz WiFi network and enter password
6. Switch to smartphone's setting to connect the device's hotspot



7. The name of the WIFI hotspot is the same as that on the monitor, the device's password is 12345678
8. Return to app to add the device
9. Added successfully



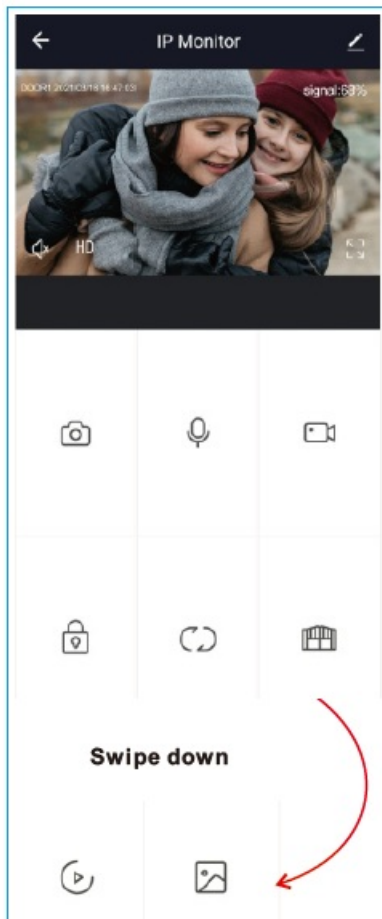
Share device through home management











Configure according to the process

Function description for the app

1. If the device has been successfully connected to the user's smartphone, the user needs to delete the device on the APP before adding it to another smartphone.
 (**Note:** The device should be deleted when the network is good, otherwise it's only deleted on the APP, but not on the server). After deleting, go back to the APP to check and confirm.
2. If a new user needs to add the device again after the machine restores to the factory settings, the current user needs to delete the device before re-adding. Otherwise, it is impossible to add the device to the app as new device




	Take pictures and save pictures on APP
	Talk
	The video is on the phone, not on the SD card
	Door Unlock: Release the electronic lock which connects with the outdoor doorbell.
	Channel switching, this is related to the indoor monitor menu setting. If you turn on 4 channels, you need to use the switches as: on
	Independent Unlock: Release the electronic lock which connects with the indoor monitor.
	Playback SD card recording
	Playback pictures

If you have any problem during the installation or the usage, please send email to our support team, we will help you solve the problem ASAP.

- **Support email:** support@tmezon.com
- **Official Website:** <http://www.tmezon.com>
- **Manufacturer:** Zhuhai Tmezon Technology Co., Limited Address: No.6.Pingbei 2nd.Rd, NANPING Technology Area, Zhuhai City,Guangdong,China

Documents / Resources

	TMEZON MZ-VDP-NE202 4-Wire Digital Analog Hybrid System [pdf] User Guide MZ-IP-V1026TW, MZ-IP-V726TW, MZ-VDP-NE202, MZ-VDP-NA262F, MZ-VDP-NE202 4-Wire Digital Analog Hybrid System, 4-Wire Digital Analog Hybrid System, Digital Analog Hybrid System, Analog Hybrid System, Hybrid System
---	--

References

- [video intercom doorbell system_wireless security system manufacturer_wireless home security system_secure closed circuit television camera-TMEZON](#)