



TMEZON MZ-IP-V1026TW 1080P IP WIFI Video Intercom User Guide

[Home](#) » [TMEZON](#) » TMEZON MZ-IP-V1026TW 1080P IP WIFI Video Intercom User Guide 

Contents

- 1 TMEZON MZ-IP-V1026TW 1080P IP WIFI Video Intercom
- 2 Product Information
- 3 Product Usage Instructions
- 4 Description on indoor monitor
- 5 Wiring diagram
- 6 Note on wiring connection
- 7 Specification for indoor monitor
- 8 Install the indoor monitor
- 9 Specification for doorbell
- 10 Install the outdoor doorbell
- 11 Wiring diagram for outdoor doorbell
- 12 Operation mode for outdoor doorbell
- 13 Menu operation
- 14 Menu styles
- 15 Setting
- 16 Devices
- 17 Ring
- 18 Recording
- 19 Live view on the monitor
- 20 Connect network for the indoor monitor
- 21 Add the device by EZ mode
- 22 AP mode
- 23 Add the device by AP mode
- 24 Share device through home management
- 25 Function description for the app
- 26 Documents / Resources
 - 26.1 References
- 27 Related Posts

TMEZON MZ-IP-V1026TW 1080P IP WIFI Video Intercom



Product Information

Specifications

- Technical Support: ZZZWPHJRQFRP
- Product Dimensions: 7XD6PDUW\$33
- Weight: \$+'79,&9,035HVROXWLRQ
- Model Number: 0DQXIDFWXUHU=KXKDL7PHJRQ7HFKQRORJ&R/LPLWHG
- Power Source: =KXKDL&LW*XDQJGRQJ&KLQD
- Operating Temperature: -40 to 70 degrees Celsius

Product Usage Instructions

Step 1: Unpacking

When you receive the product, carefully remove it from the packaging.

Step 2: Power Connection

Connect the power cord to the designated power outlet. Make sure the voltage matches the specifications mentioned in the user manual.

Step 3: Setting Up

Follow the instructions provided in the user manual to set up the product. This may involve installing software, configuring settings, or connecting to a network.

Step 4: Product Operation

Once the product is set up, refer to the user manual for detailed instructions on how to operate it. Familiarize yourself with the different features and functions of the product.

Step 5: Maintenance and Care

To ensure optimal performance and longevity of the product, perform regular maintenance as recommended in the user manual. Keep the product clean and protected from dust and moisture.

Frequently Asked Questions (FAQ)

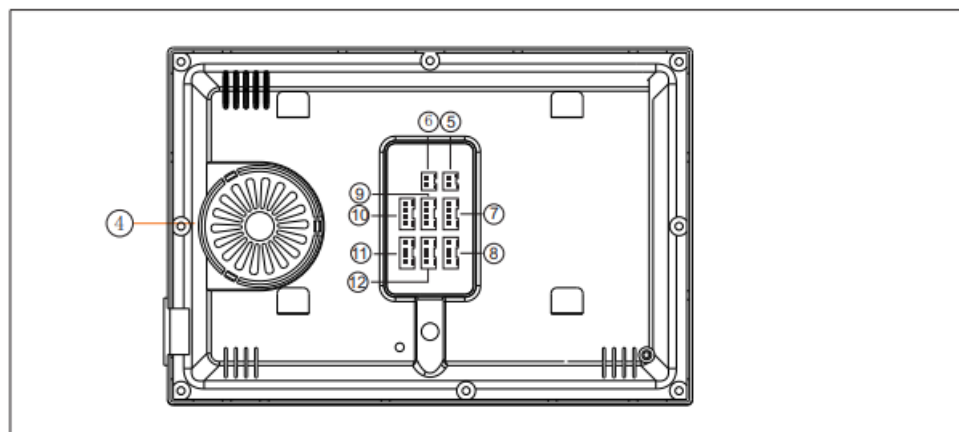
- Q: Where can I find technical support?

A: For technical support, please visit [ZZZWPH\]RQFRP](#) or contact our customer service hotline.

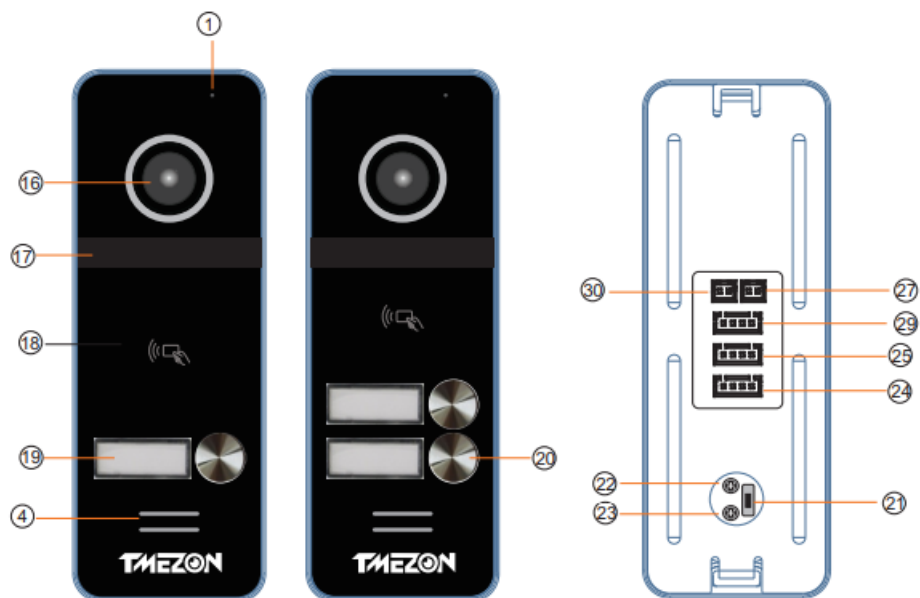
- Q: What is the operating temperature range of the product?

A: The product can operate within a temperature range of -40 to 70 degrees Celsius.

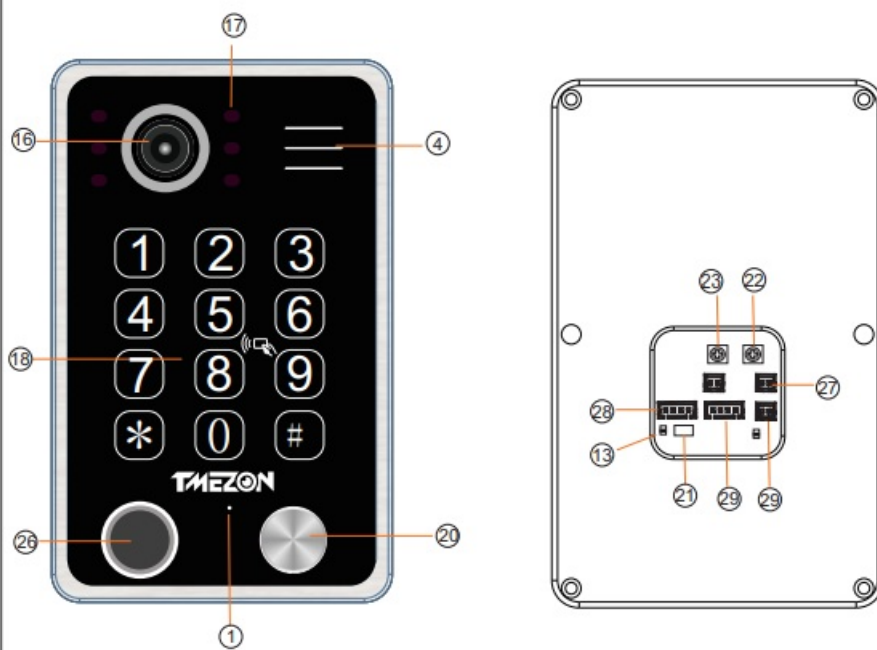
Description on indoor monitor



Model: MZ-VDP-NE202



Model: MZ-VDP-NA262F

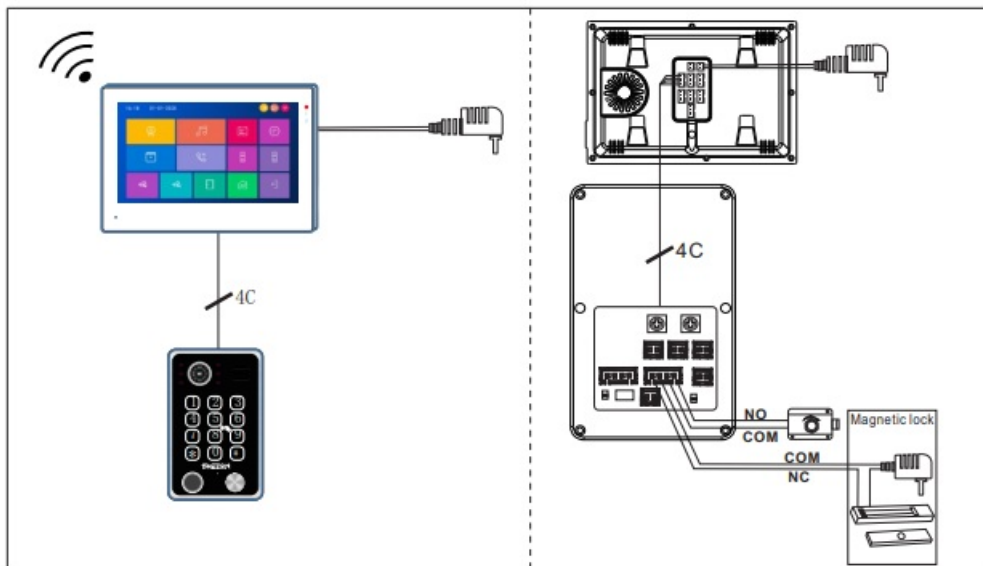


1. Microphone
2. SD card slot
3. TFTLCD
4. Speaker
5. Power interface for the monitor: DC-IN: 12V-15V
6. Independent Unlock
7. IN (Connect the Slave monitor)
8. OUT (Connect the next indoor monitor)
9. CAM1
10. DOOR1
11. DOOR2

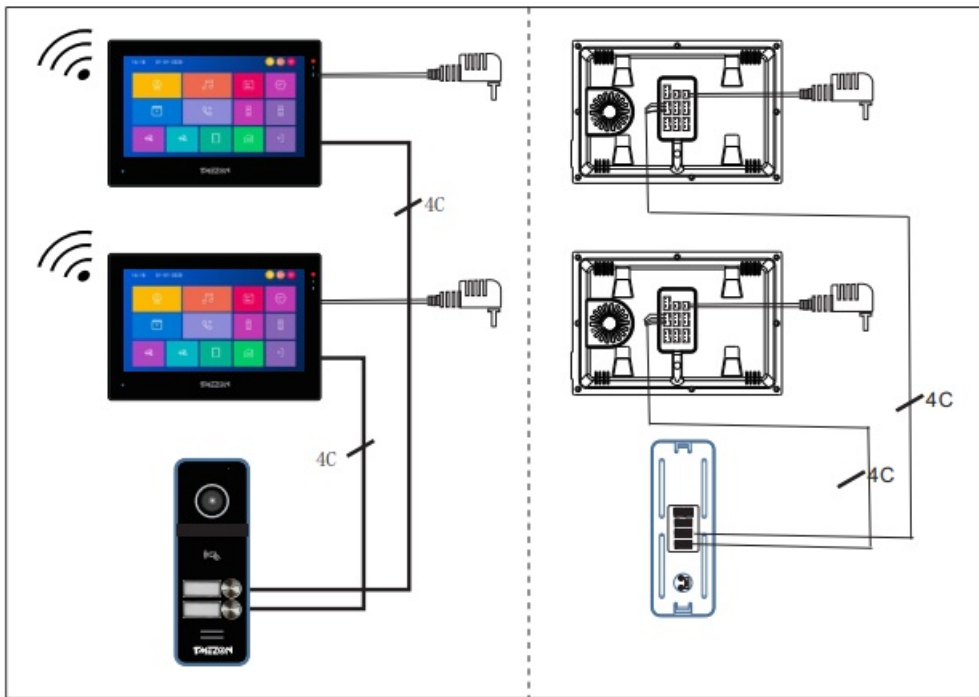
12. CAM2
13. Status indicator
14. DOOR1 status indicator
15. DOOR2 status indicator
16. Lens/Camera
17. IR-LED
18. RFID-card induction area
19. Nameplate display area
20. Call button
21. Set button
22. Door unlock delay adjustment
23. Speaker volume adjuster
24. Connect to Monitor 1
25. Connect to Monitor 2
26. Fingerprint sensing area
27. Port for EXIT Switch
28. Connect to the monitor
29. Connect to the doorlock
30. Power interface for the doorbell: DC-IN: 12V-15V

Wiring diagram

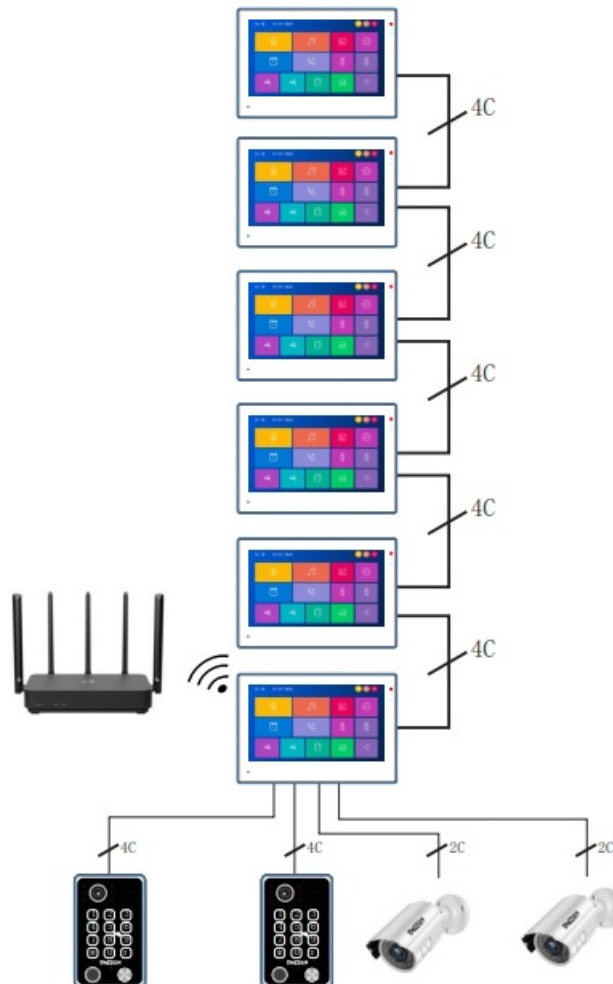
1*10" Monitor+1* Outdoor doorbell

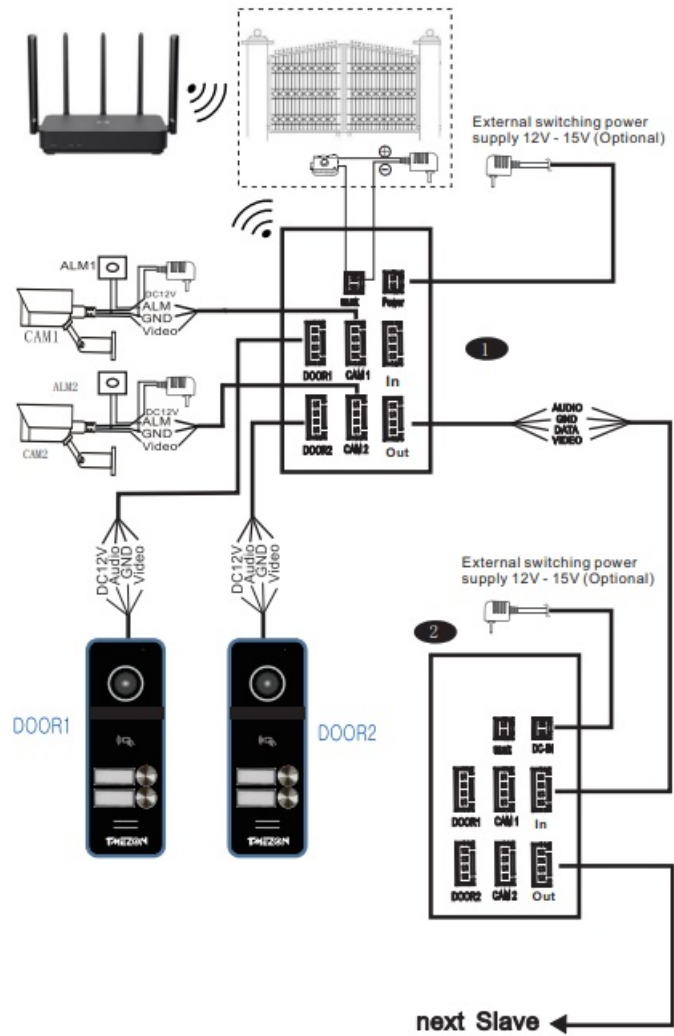


2 *7" monitors +1* Outdoor doorbell



1 Master Monitor+5 slave monitors+2 Outdoor doorbells + 2 CCTV Cameras





Note on wiring connection

Please pay attention to the name marked on the sticker of the machine to avoid wrong connection. The actual quantity of wire rod has the very old relations

- 4 core ordinary unshielded and shielded wiring cable:
- The effective distance from the outdoor camera to the furthest indoor monitor:
 - Transmission <30m (4×0.4mm)
 - Transmission <60m (4×0.65mm)



- If you want to extend the distance to more than 100m, it is best to choose thick copper core cable, shielded wire or 3-core ordinary unshielded wire + SYV75-3 video cable. Connect the shield terminal to GND

Three-wire unshielded cable + SYV75-3 video cable



Integrated video surveillance cable with power cord(2×0.5mm' +75-3)



- If user wants to use CAT5 or CAT6 network cable, effective distance from the outdoor camera to the furthest indoor monitor will be limited.

For unshielded network cable, the distance will be up to 20m.

For shielded network cable, the distance will be up to 40m.

So CAT5 or CAT6 network cable is not recommended.

CAT5 or CAT6 network cable consists of 4 pairs of twisted pairs(8 wires), here one pair of twisted pair will be used as one cable. Green & White+Green, Brown & White + Brown, Orange & White+Orange, Blue & White+ Blue.

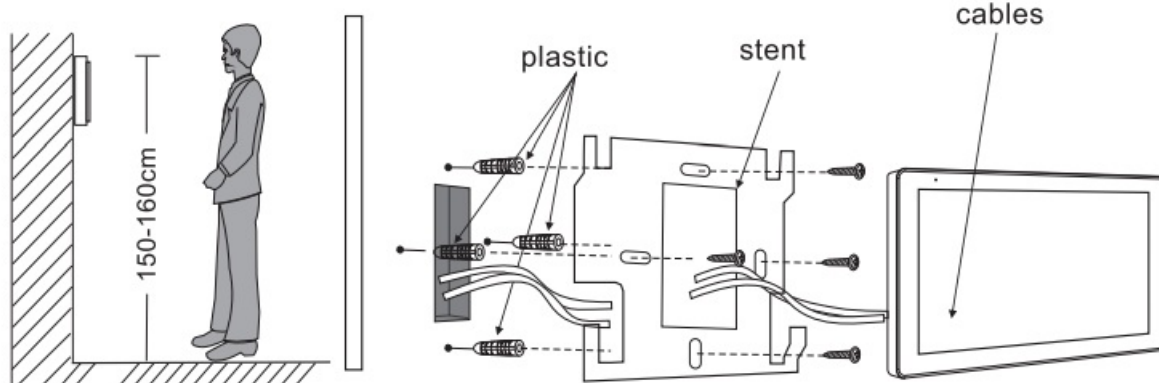


If it is a shielded wire, it must be connected to GND.

Specification for indoor monitor

Display screen	7" / 10.1"
Definition	1024x600x3RGB
Standard	PAL/NTSC
Calling mode	Two-way conversation
Calling time	>120S
Standby current	Max 300mA
Work current	Max 800mA
Power supply	External switching power Supply(DC12V-15V)--Optional
Work temperature	0~+50°C
Installation way	Surface mounting
SD Max capacity	128GB(FAT) ≥Class10
Video format	AHD/CVI/TVI/CVBS
Resolution	1080P/960P/720P/480P

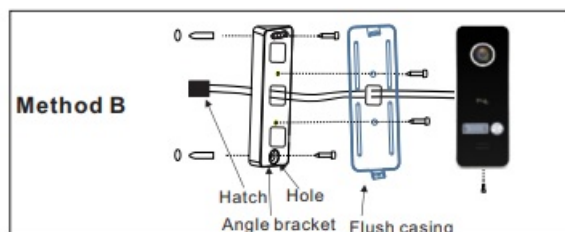
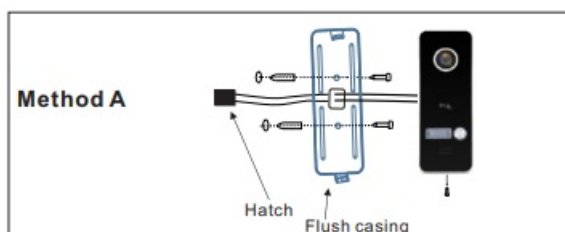
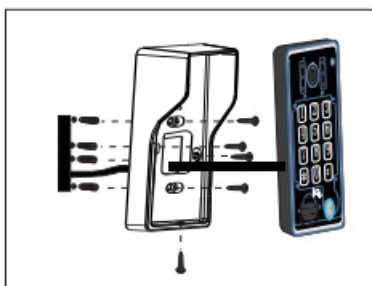
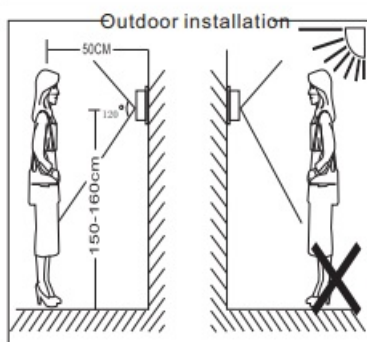
Install the indoor monitor



Specification for doorbell

Sensor area	1/2.9"
Resolution	1920 X1080
Standard	PAL/NTSC
View angle	150°
Standby current	Max60mA
Work current	Max200mA
Power supply	DC12V
Work temperature	-40~+50°C
Password capacity	Max 200PCS
RFID card capacity	Max 200PCS (IC card, 13.56Mhz)
Fingerprint capacity	Max 200PCS

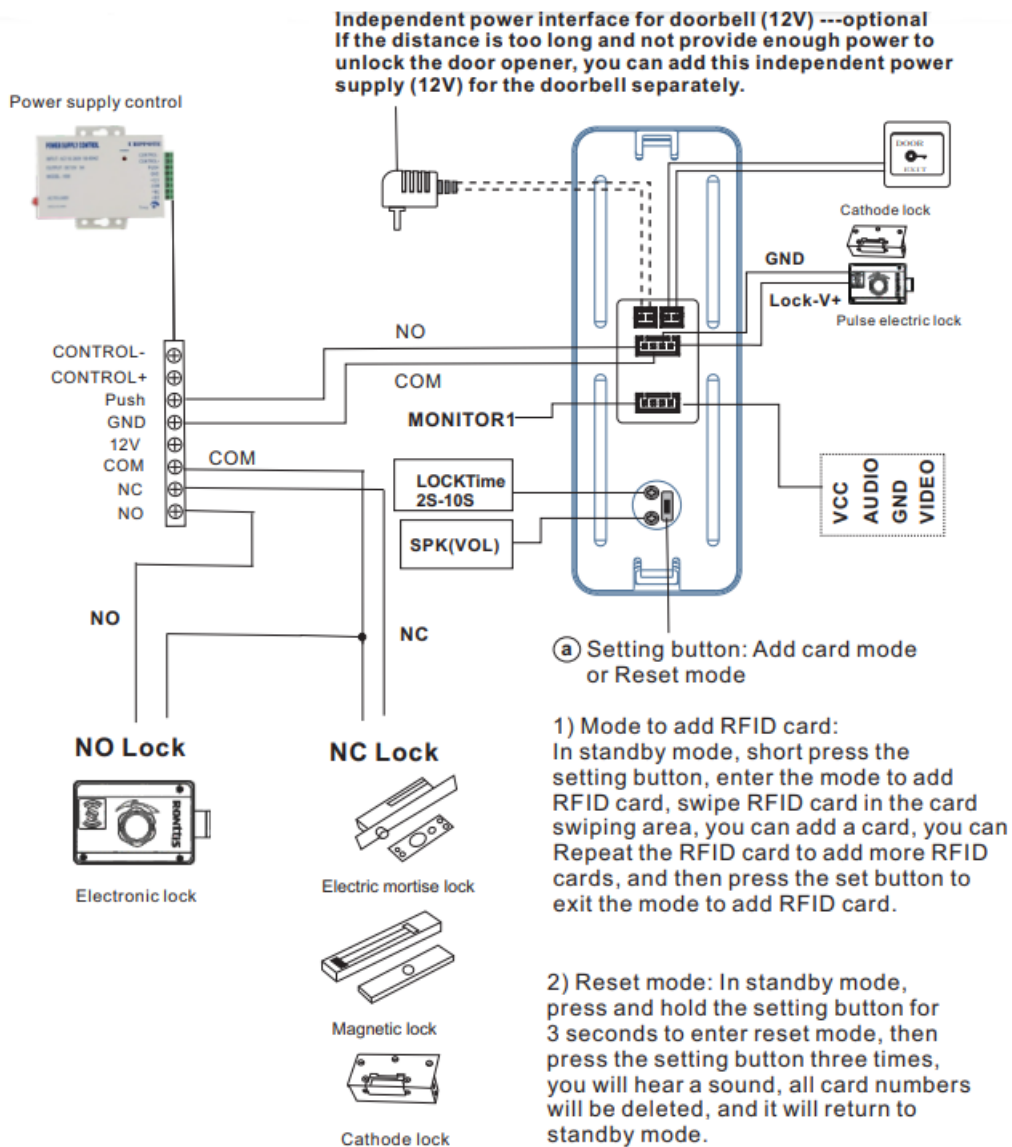
Install the outdoor doorbell



1. Please be far from the devices with intense radiation: TV, DVR, etc.
2. Do not disassemble privately to avoid the electric shock.
3. Do not drop, shake or knock the device, otherwise will damage the elements.
4. Choose the best position to install, the horizontal view is 150cm.
5. Please power down before installation.
6. Keep at a distance of more than 30cm with AC power to avoid interference.
7. Away from the water, magnetic field and chemicals.

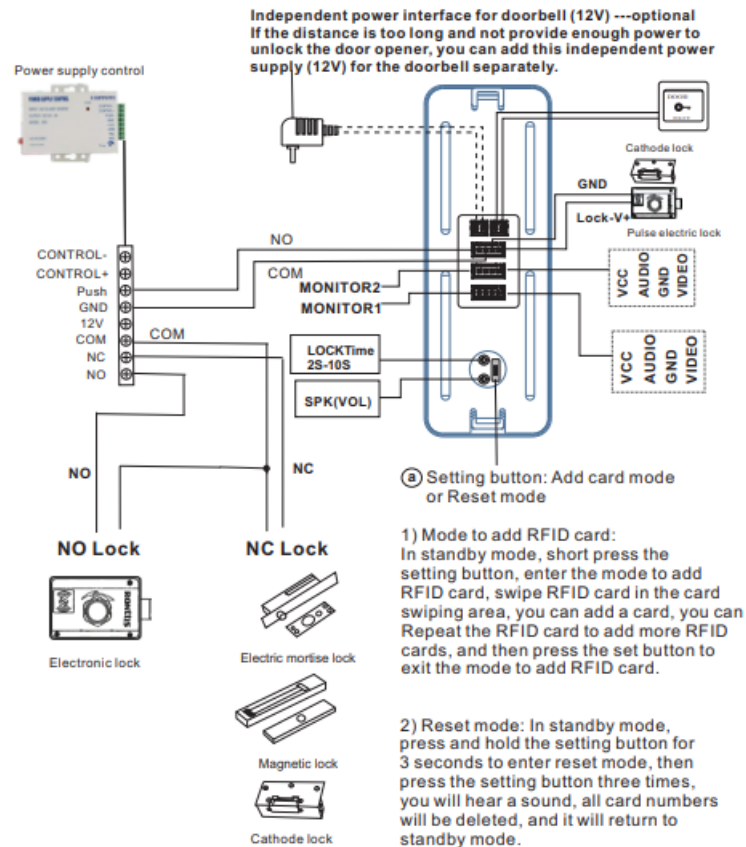
Wiring diagram for outdoor doorbell

Model: MZ-VDP-NE201



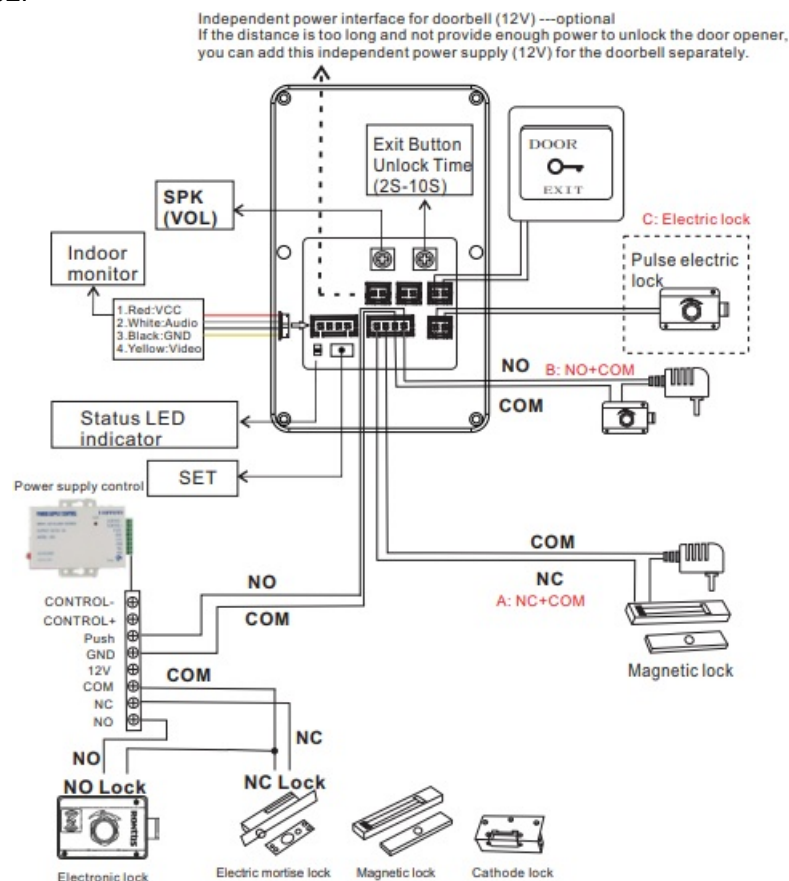
1. Mode to add RFID card: In standby mode, short press the setting button, enter the mode to add RFID card, swipe RFID card in the card swiping area, you can add a card, you can Repeat the RFID card to add more RFID cards, and then press the set button to exit the mode to add RFID cards
2. Reset mode: In standby mode, press and hold the setting button for 3 seconds to enter reset mode, then press the setting button three times, you will hear a sound, all card numbers will be deleted, and it will return to standby modes

Model: MZ-VDP-NE202



1. Mode to add RFID card: In standby mode, short press the exit the mode to add RFID card.
2. Read hold line sening button tor 3 seconds to enter reset mode, then You wil heartsout a hard numbers deleted, and it will return to standby mode.

Model: MZ-VDP-NA262F



1. Type A: NC+COM, it requires extra power supply for the lock itself only
2. Type B: NO+COM, it requires extra power supply for the lock itself only
3. Type C: For long distance connection between the monitor and the outdoor station, in case outdoor station can not get enough power from the monitor for normal working. it is suggested to provide DC12V power supply to the Power-In terminal, here the doorlock use rooes horneeo extra poover suoor.
4. Reset to factory setting: In standby mode, press and hold the setting button for 3 seconds to enter reset mode. then press the setting button three times. vou will hear a sound. all configurations of RFID cards, fingerprints and password will be deleted, the doorbell will return to standby mode.

Operation mode for outdoor doorbell

Model: MZ-VDP-NA262F

1: Modify the administrator password

123456 + # + 0 + # + XXXXXX + # + *

Administrator password

new password

2: Add unlock password

123456 + # + 1 + # + XXX + # + XXXXXX + # + **

Administrator password

1: Mode to add new password

Serial number

new password

Example: serial number 012 password 222333

123456 + # + 1 + # + 012 + # + 222333 + # + **

3: Add RFID card unlock

123456 + # + 3 + # + XXX + # + RFID card + # + **

Administrator password

3: Mode to add RFID card

Serial number

Swipe RFID card directly

4: Add fingerprint unlock

123456 + # + 5 + # + xxx + # + + # + **

Administrator password

5: Mode to add fingerprint

serial number

Please record every direction of your fingers as much as possible, record at least 2 fingers

5: Delete password/RFID/fingerprint user

Delete by serial number

123456 + # + 2 / 4 / 6 + # + XXX + # + **

Administrator password

2: Delete password
4: Delete RFID
6: Delete fingerprint

serial number

Clear users by category

123456 + # + 2 / 4 / 6 + # + 99 + # + *

Administrator password

2: Delete password
4: Delete RFID
6: Delete fingerprint

99 is delete all

Long press the setting button on the back of the device for 3S, then short press the setting 3 times to restore to the factory mode

Backlight LED settings

123456 + # + 7 + # + 00 / 01 / 02 + # + *

00: Closed in any state
01: It lights up in any state
02: Closed at standby mode, lights up at working

Menu operation



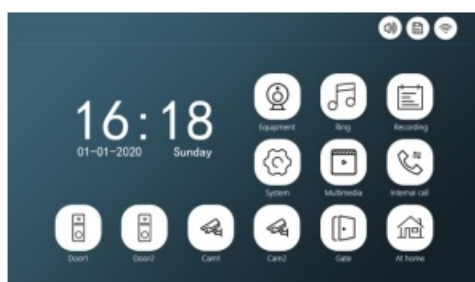
①		Red means that motion detection of this channel is turned on, Gray means that motion detection of this channel is turned off
②		1: At home mode, normal working state. Notification will be pushed to the mobile phone. 2: Not at home mode, directly open the message reminder, visitors can record the message with video. Notification will also be pushed to the mobile phone. 3: Sleep mode: There will be no ringing inside and outside. The notification will be pushed to the mobile phone when the doorbell is pressed
③		Network connection status indication
④		Call log files.
⑤		Message record files.
⑥		Motion detection record files.
⑦		Alarm log files.

Menu styles

Win10 style



Android style



Standard style



Three styles of interface can be set through the menu. No need to restart the monitor

Setting



1. Please format the SD card with the device.
2. Restore factory settings: All parameters are restored to factory mode. Note that Restore factor settings: A parameters are restored to factory mode. Note that TuyaSmart's device must be deleted together before it can be used again, otherwise it cannot be added and used by other accounts.
3. The Device ID is an important configuration of the equipment in the system. It must be configured correctly. Otherwise it will not work properly. If the current device is connected to the Outdoor unit1, Device ID must be set to 1, and the others Slave monitors must be set 2/3/4/5/6, then work normally.

Time

1. (Screen off): Monitor will be off with no operation within 10s
2. (Clock): Time will be displayed on the screen at standby mode

Digital Frame

1. The picture file must be copied to the Digital Frame folder. the picture resolution 1: The picture file must be copied to the Digital Frame folder, the picture resolution must not be greater than: 2526×1576, the format is JPEG
2. Long press the file to pop up the submenu, select "Delete" or "Delete All", and click the file to enter the playback interface.

Devices

Door1				
Door1	Enable switch	◀◀	on	▶▶
	Unlock delay	◀◀	1	▶▶
	Signal mode	◀◀	PAL	▶▶
Door2	Signal type	◀◀	AHD1080	▶▶
	Record mode	◀◀	Video	▶▶
	Message	◀◀	off	▶▶
Camera1	Motion detection	◀◀	off	▶▶
	Motion detection duration	◀◀	20s	▶▶
	Motion display	◀◀	off	▶▶
Camera2	Motion ringtone	◀◀	off	▶▶
	Motion Detection Push APP	◀◀	off	▶▶

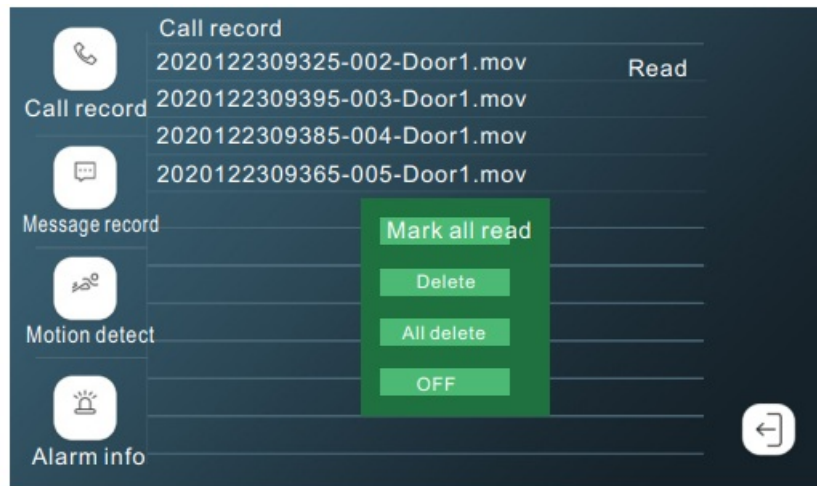
1. If the channel is closed, it will be skipped when monitoring the polling screen. This channel and APP will not display this channel. Please set it carefully.
2. When Motion Detection Push APP is closed, the phone will not receive any push information

Ring

Door1/Ring1	
Door1/Ring2	Schedule ◀◀ 06:00-12:00 ▶▶
Door1/Ring3	Time ◀◀ 30S ▶▶
Door2/Ring1	Ring mode ◀◀ Standard ▶▶
Door2/Ring2	Ring select ◀◀ 1 ▶▶
Door2/Ring3	Ring volume ◀◀ 8 ▶▶
	Out door volume ◀◀ 5 ▶▶

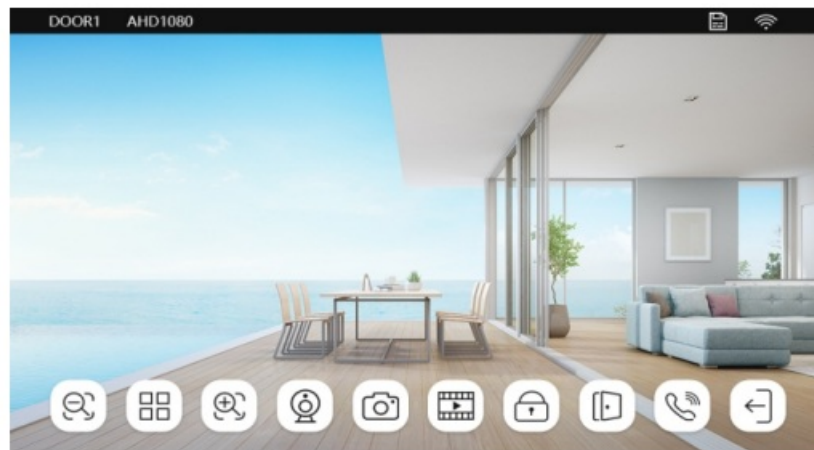
1. The ringtone of each channel can be set to three time periods, and different ringtone types and volume can be set, but it should, be noted that there can be no gaps and overlaps between the three time periods, otherwise the system will play the default parameters.
2. Please note that the volume setting of the Door bell cannot be greater than the volume of the indoor monitor.

Recording



1. Click the file to play directly, long press the file to enter the delete/read operation.

Live view on the monitor



	Zoom out
	 Volume, brightness, contrast, saturation
	Zoom in
	Switch to the next channel, Door1>Door2>Cam1>Cam2
	Snapshot
	Video
	Door 1/Door 2 unlock
	Release the door which connected to the indoor monitor
	Calling, Hang up/Return

Connect network for the indoor monitor

- The app for the device is TuyaSmart. Please download the TuyaSmart app from the Google Play Store or APP

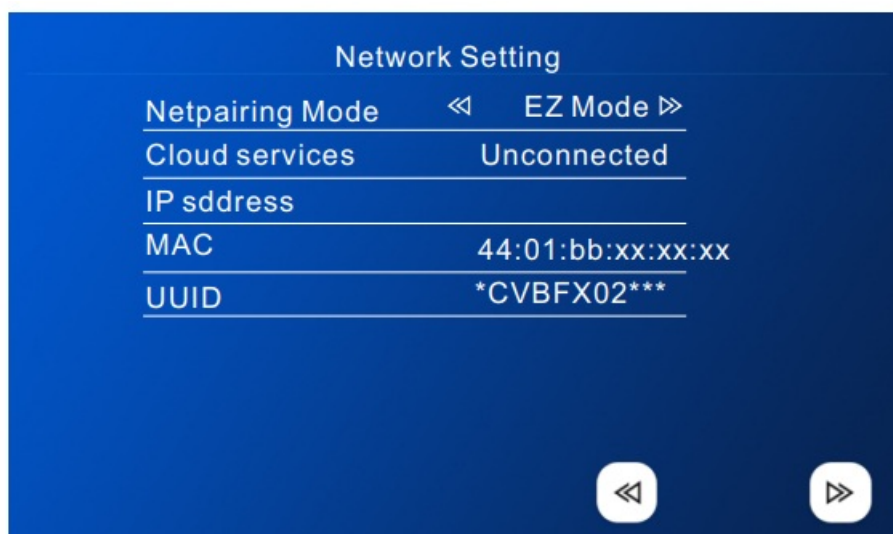
Store.

- The device only works with 2.4 GHz WiFi, not 5 GHz.
- Users can configure the network for the monitor through AP mode or EZ mode.
- The mobile phone should be connected to 2.4Ghz WiFi first, then add the device to the app

Scan the QR code for the instructions to create a 2.4Ghz WiFi



EZ mode



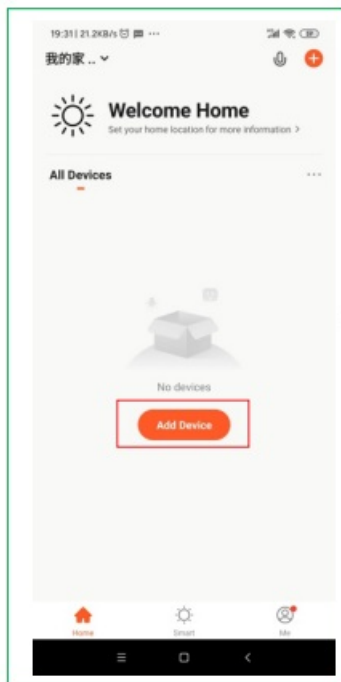
Select EZ mode and save it on the monitor, then add the device through app.

Add the device by EZ mode

EZ mode, only use the mobile phone to connect the WIFI router and match the WIFI password, as shown below

Scan the QR code for a tutorial video of the app connection through EZ mode

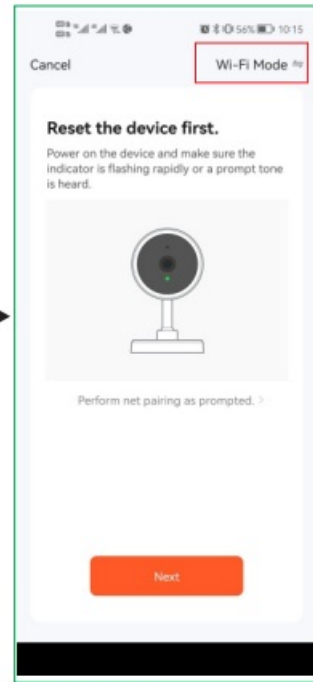




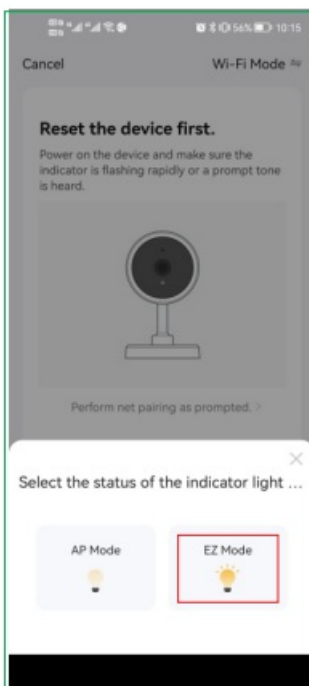
① Open TuyaSmart and Add Device



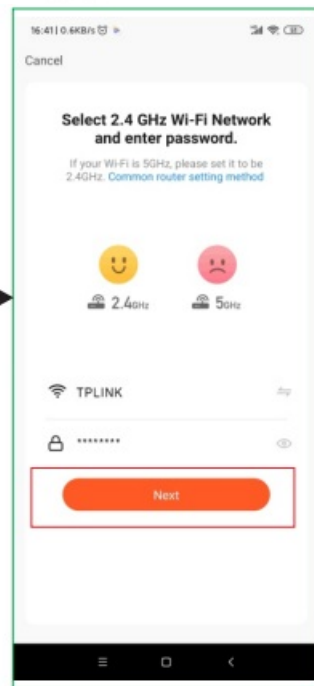
② Video Surveillance>Smart Doorbell



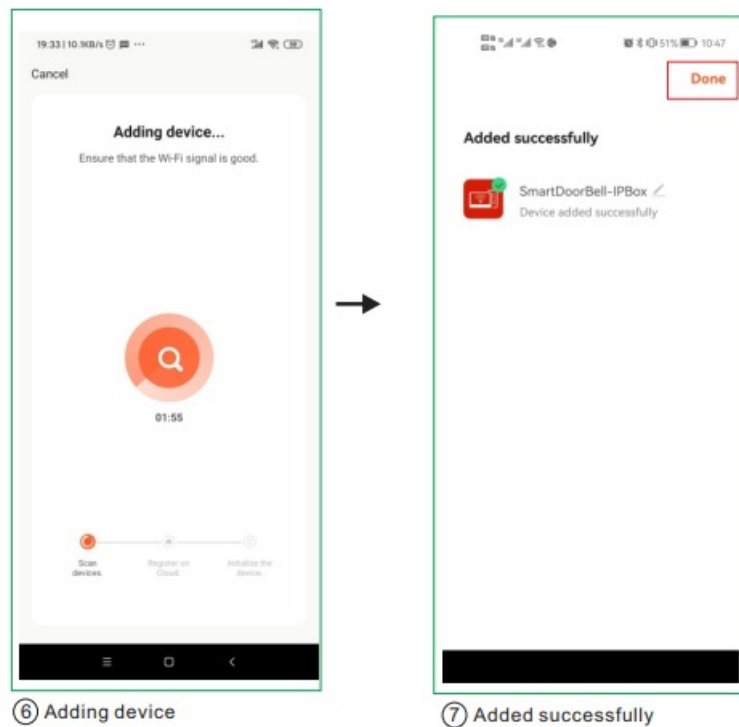
③ Select WiFi mode, click Next



④ Select EZ mode

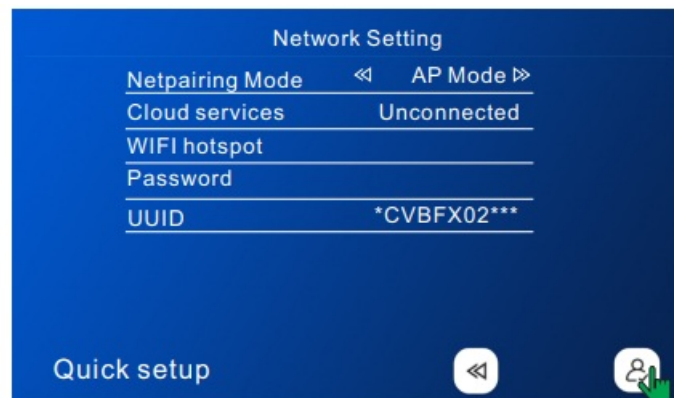


⑤ Select 2.4Ghz WiFi network and enter password

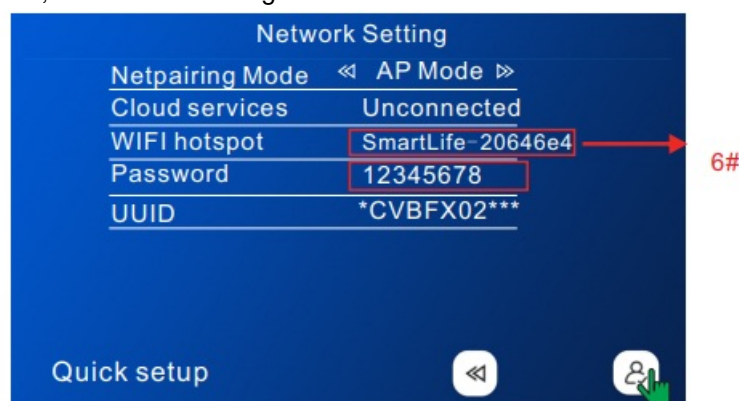


AP mode

To quickly configure the interface and configure the AP mode in (Settings>Network Interface), note: In (Settings>Network Interface), press the return button to restart the device. (Settings> Network Interface)Vieww the WIFI hotspot name and password.

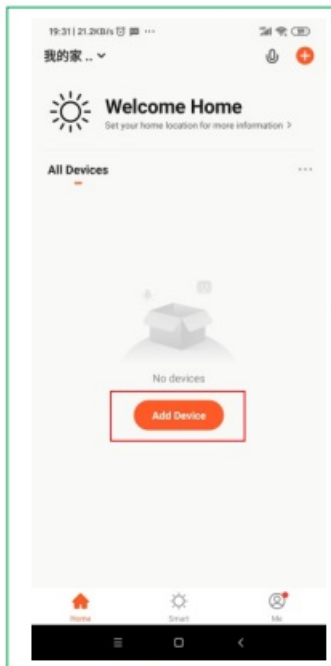


After restarting as prompted, enter the following interface in turn



Tuya APP operates as follows

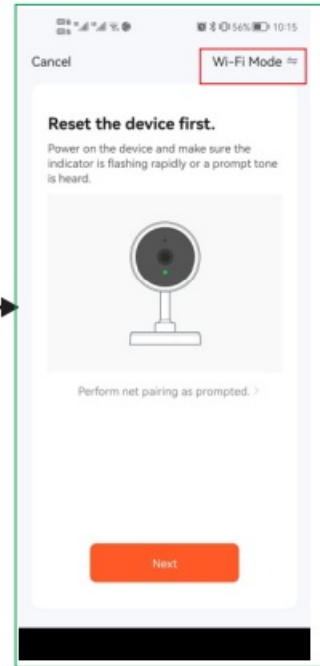
Add the device by AP mode



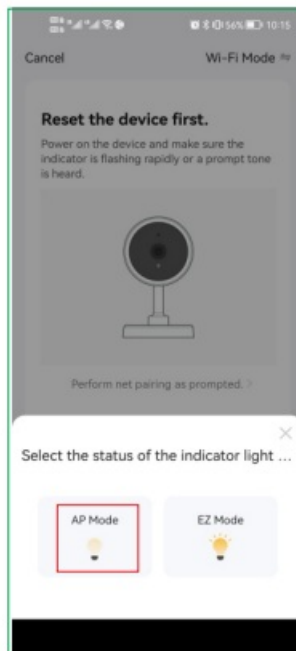
① Open TuyaSmart and Add Device



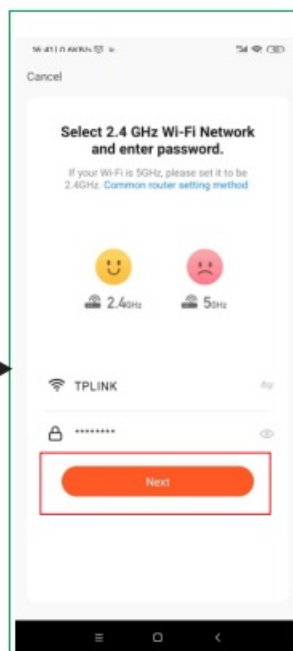
② Video Surveillance>Smart Doorbell



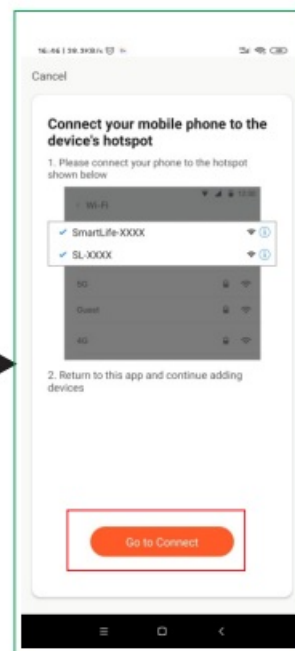
③ Select WiFi mode, click Next



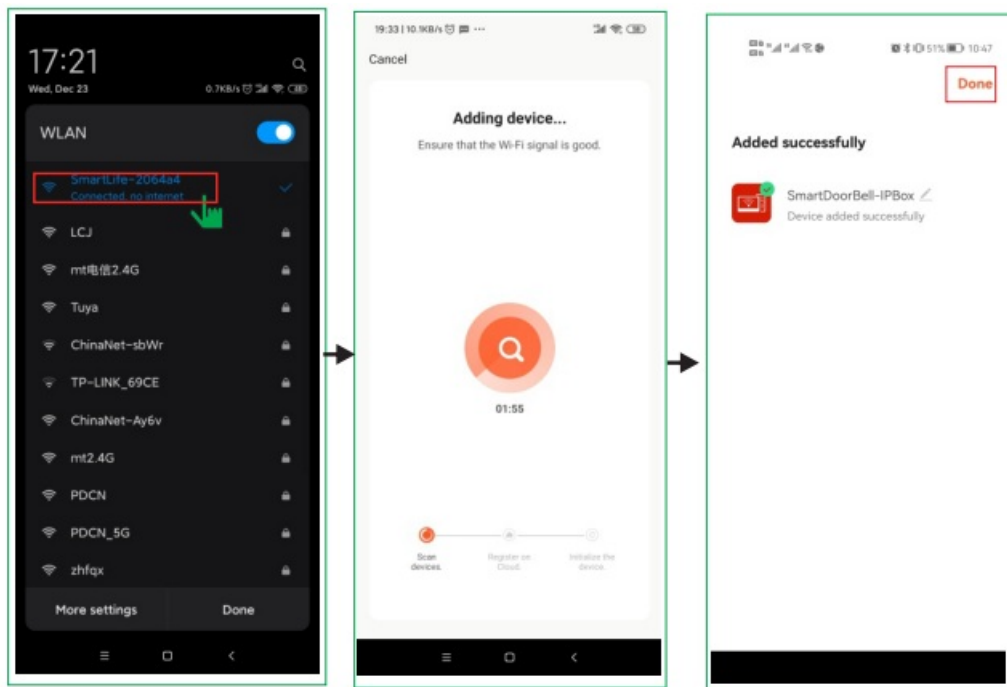
④ Select AP mode



⑤ Select 2.4Ghz WiFi network and enter password



⑥ Switch to smartphone's setting to connect the device's hotspot



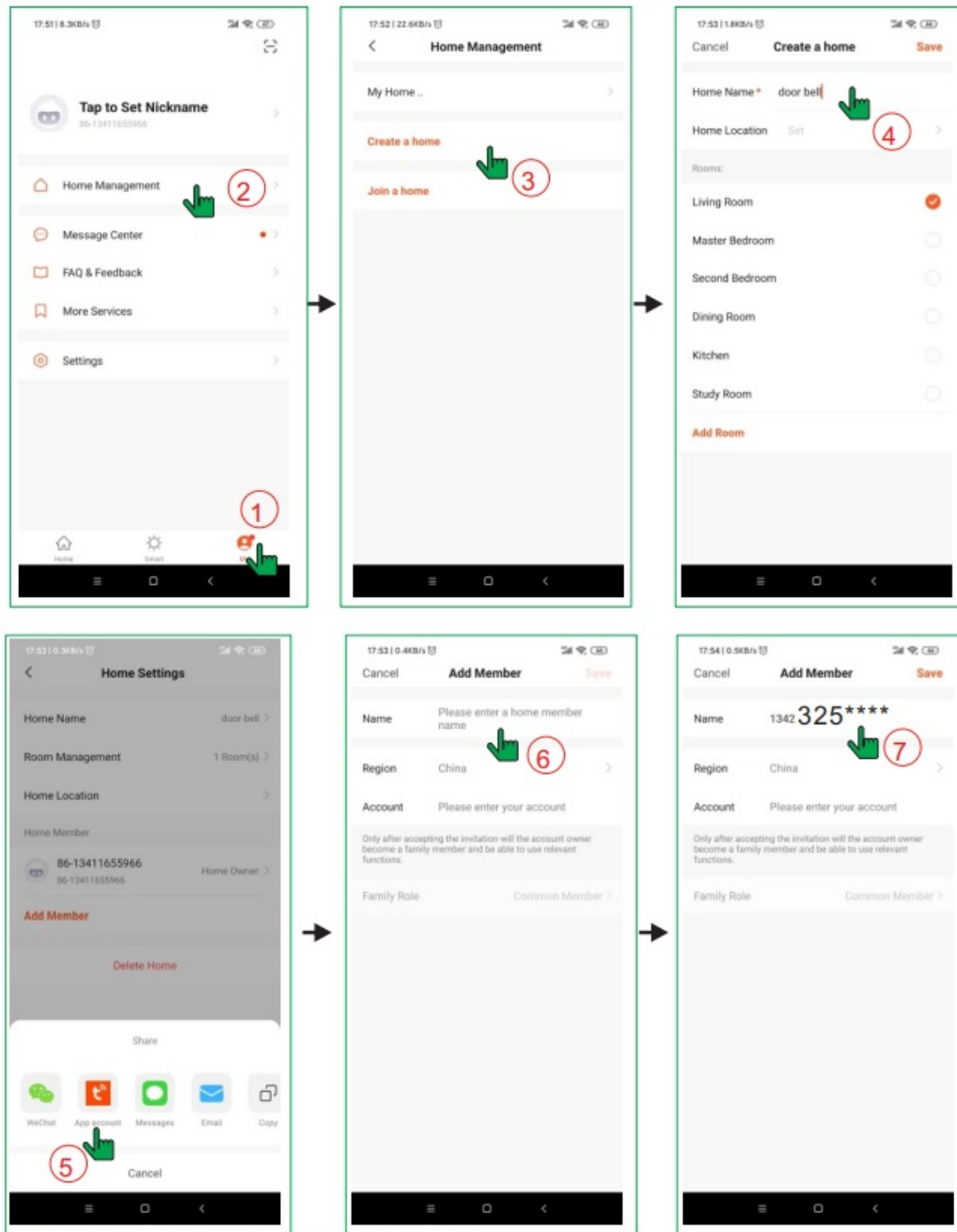
⑦ The name of the WIFI hotspot is the same as that on the monitor, the device's password is 12345678

⑧ Return to app to add the device

⑨ Added successfully

Scan the QR code for a tutorial video of the app connection through AP mode

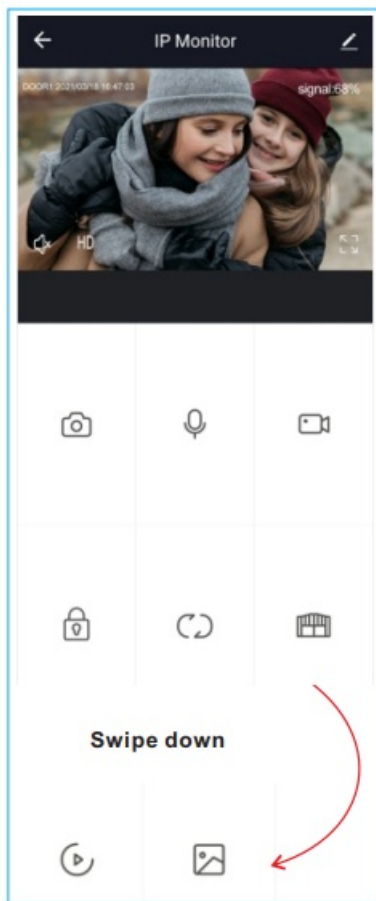
Share device through home management



Configure according to the process

Function description for the app

1. If the device has been successfully connected to the user's smartphone, the user needs to delete the device on the APP before adding it to another smartphone. (Note: The device should be deleted when the network is good, otherwise it's only deleted on the APP, but not on the server). After deleting, go back to the APP to check and confirm.
2. If a new user needs to add the device again after the machine restores to the factory settings, the current user needs to delete the device before re-adding. Otherwise, it is impossible to add the device to the app as a new device.



	Take pictures and save pictures on APP
	Talk
	The video is on the phone, not on the SD card
	Door Unlock: Release the electronic lock which connects with the outdoor doorbell.
	Channel switching, this is related to the indoor monitor menu setting. If you turn on 4 channels, you need to use the switches as: on
	Independent Unlock: Release the electronic lock which connects with the indoor monitor.
	Playback SD card recording
	Playback pictures

Technical support: support@tmezon.com

Official Website: <http://www.tmezon.com>

Documents / Resources

	<p>TMEZON MZ-IP-V1026TW 1080P IP WIFI Video Intercom [pdf] User Guide</p> <p>MZ-IP-V1026TW 1080P IP WIFI Video Intercom, MZ-IP-V1026TW, 1080P IP WIFI Video Intercom, WIFI Video Intercom, Video Intercom, Intercom</p>
--	---

References

- [User Manual](#)