



TMEZON MC-0702 Wi-Fi IP Video Intercom User Guide

[Home](#) » [TMEZON](#) » TMEZON MC-0702 Wi-Fi IP Video Intercom User Guide 

Contents

- [1 TMEZON MC-0702 Wi-Fi IP Video Intercom](#)
- [2 Connection diagram](#)
- [3 Connection Steps under AP Mode](#)
- [4 WIRING DIAGRAM](#)
- [5 Documents / Resources](#)
 - [5.1 References](#)



TMEZON MC-0702 Wi-Fi IP Video Intercom



Thank you for choosing JeaTone's products. This user guide is only part of the instructions and operations. Please read the manual for more operations.

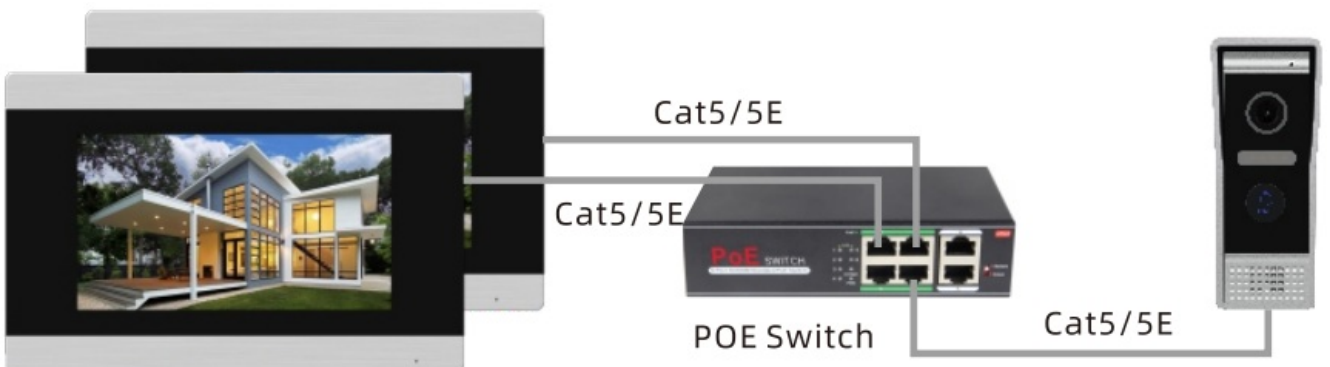


Connection diagram

1. The indoor monitor directly supplies power to the 87203 outdoor station.{Without POE}



2. Power the indoor monitor (one or more) and outdoor station through the POE switch



APP download & Regist

1. Before WiFi Connection, download “Tuya smart” APP in Android Market, or 105 at APPstore.
2. Run APP, and re gist. Please note to select the country and region.
3. APP Login after regist.



Tuya Smart



Smart Life

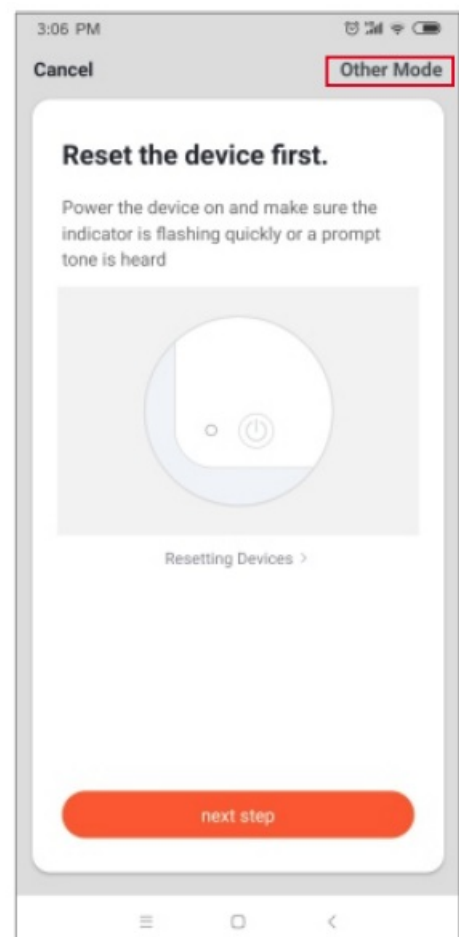
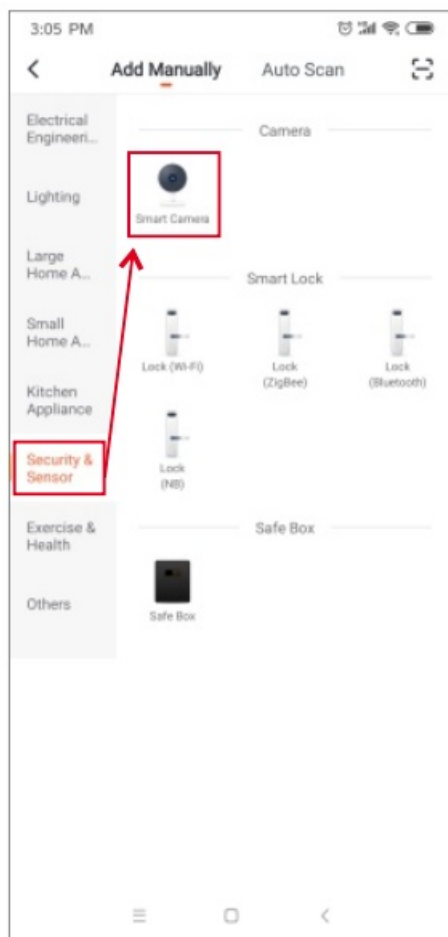
Note: Wireless network setting must be used with the mobile phone APP (Tuya smart).

When the outdoor station is pressed, there will be a notification in the smart phone.

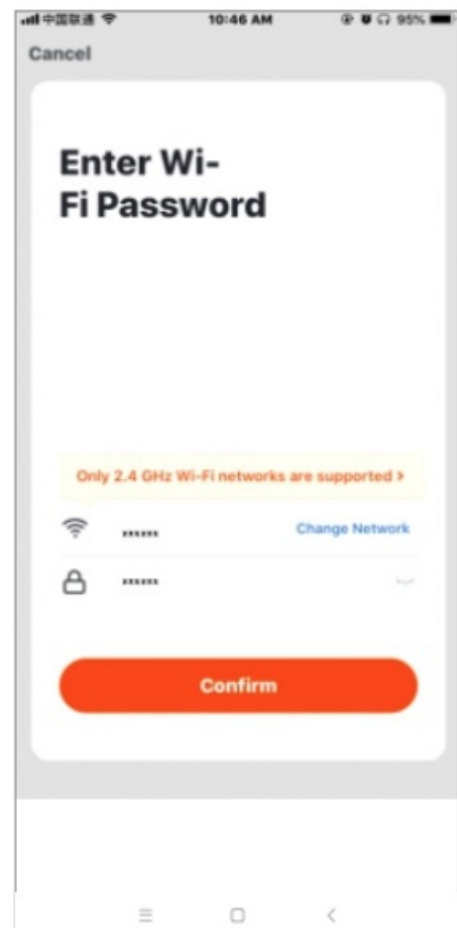
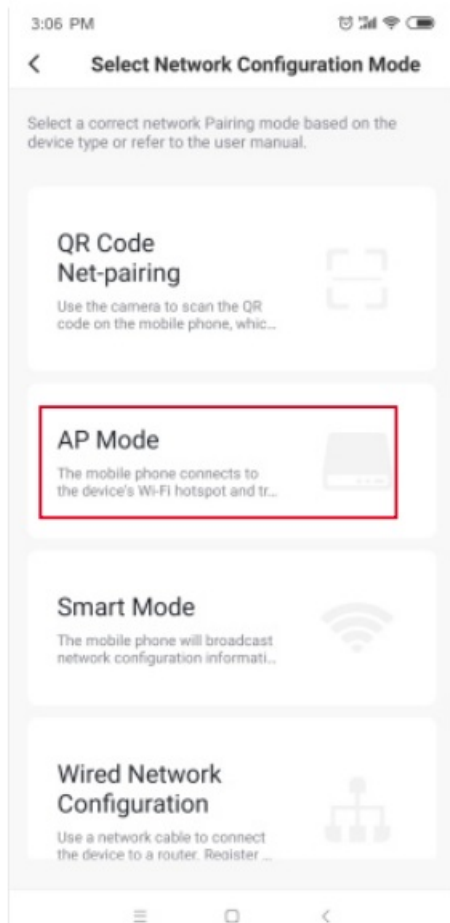
Note: If more than 2 monitors are connected, only the monitor which is set as 01 or by default has cloud intercom function. Please operate it on the 07 monitor.

Connection Steps under AP Mode

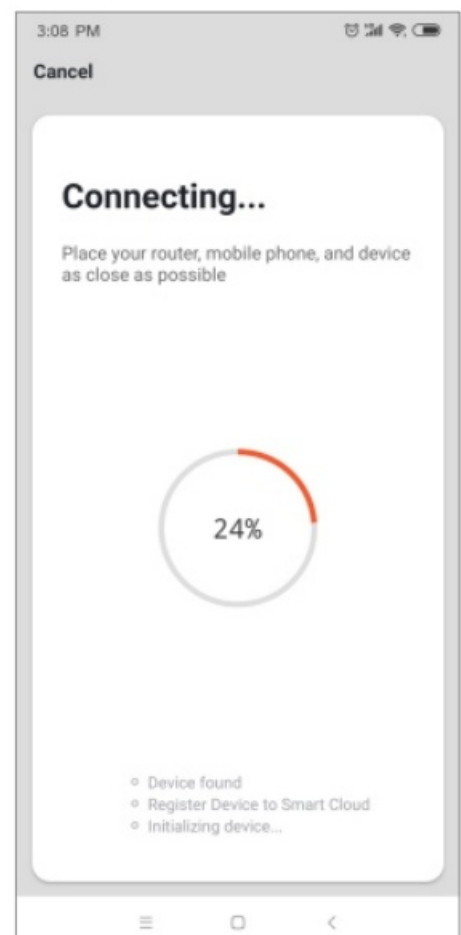
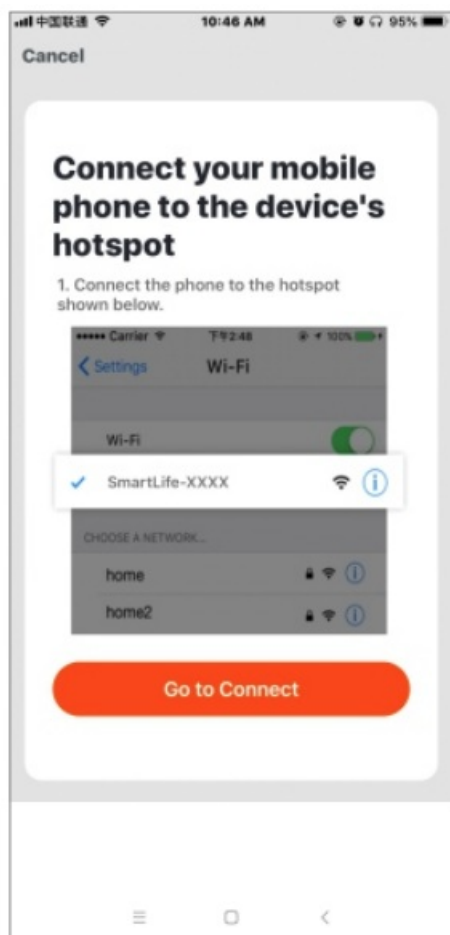
1. Smartlife-xxxxxxx is on after indoor monitor power on.
2. Open “Settings” at mobile, go to “WLAN” , check if Smartlife-xxxxxxx is available. If have, go to Step 4. If no, go to Step 3.
3. Go to the monitor’s menu Video Intercom→ Cloud Intercom→Wifi Connection, click Valid twice and run AP Mode, the indoor monitor will restart, and Smartlife-xxxxxxx is available.
4. Open “TuyaSmart” , select “Add Device” or Click the “+” at the top right corner, and enter the interface as below:
5. Select “Security & Sensor” category and find “Smart Camera”, and enter the Interface as below:
6. Click the “Other Mode” at the top right corner, and enter the Interface as below:



7. Select “AP Mode”, and click “Next step”,and enter interface as below:
8. Input the Wi-Fi name and password of your home, click “Confirm” and enter the Interface as below:

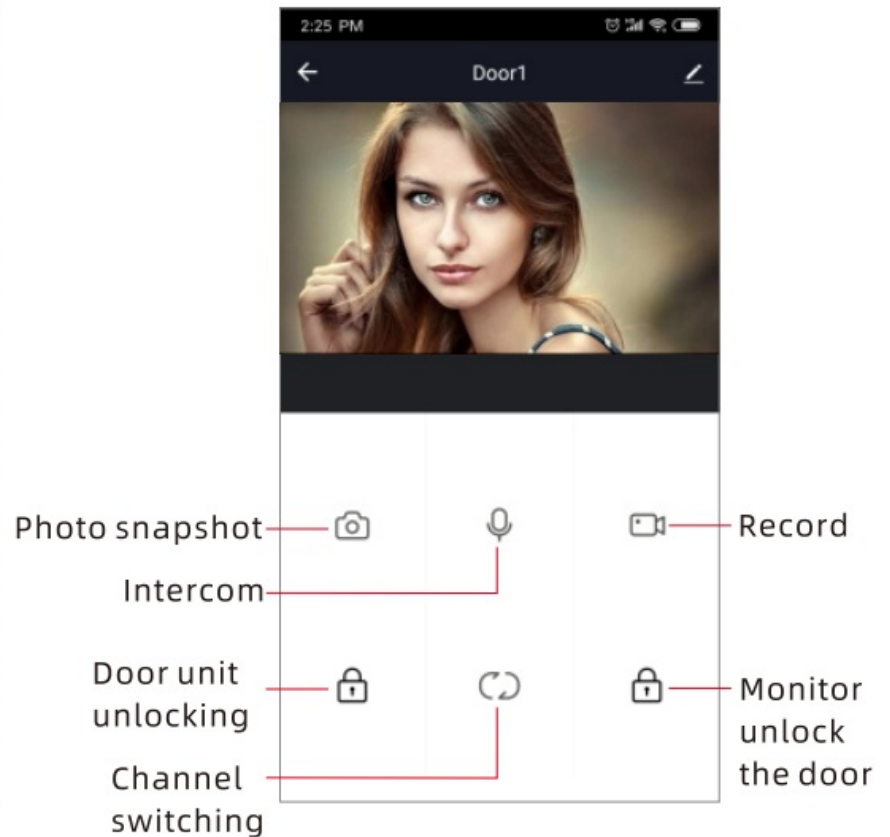


9. Open "Setting" in the mobile phone→ "Wireless & Network" and connect to Smartlife-xxxxxxx, return to "Tuya smart" App after successful connection.and enter interface as below:



10. Wait till 100% connection.

11. After successfully connect to the Wi-Fi, the indoor monitor will show the symbols of Wi-Fi and server at the top left corner.

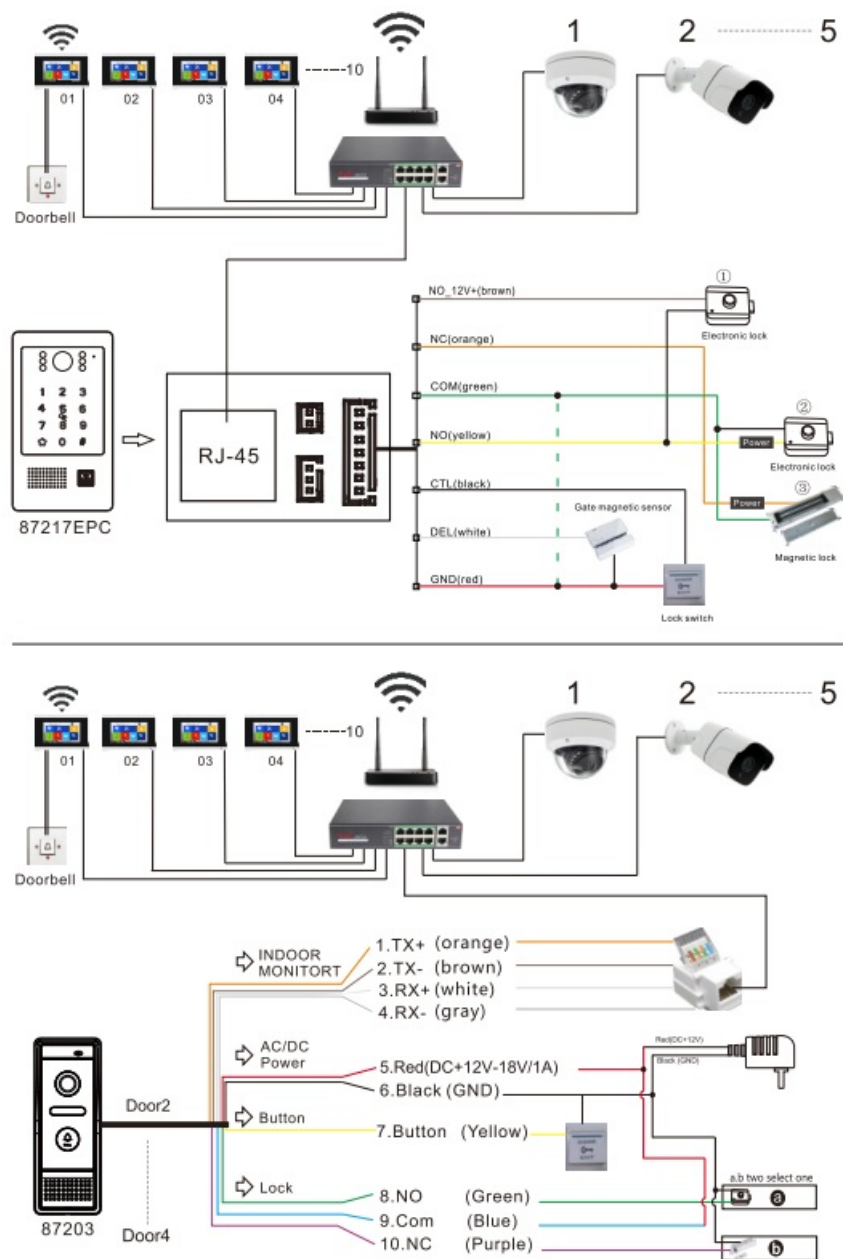


Attention:

1. It might fail monitoring at the first time after successful connection, please quit and use the outdoor unit to call the monitor, so that the server can send signal to the outdoor unit.
2. The mobile phone which is IOS system might occur the situation that Wi-Fi automatically switch, and result in connection failure, please forget all the household, Wi-Fi that you have connected before the connection.

WIRING DIAGRAM

(Miltple Devices)



Note:

Support POE function need use POE splitter in outdoor station.

Different locks have different work powers. It is recommended to power the door locks separately.

Designed and produced byJeaTone

Statement

- If there is any doubt or disputable regarding information in this manual, you can contact us for clarification.
- There maybe some difference between the description provided here and the actual devices, as our products are constantly developing and upgrading. We apologize if this manual does not contain all of the latest updates. Thanks.



[TMEZON MC-0702 Wi-Fi IP Video Intercom](#) [pdf] User Guide

MC-0702 Wi-Fi IP Video Intercom, MC-0702, Wi-Fi IP Video Intercom, IP Video Intercom, Video Intercom, Intercom

References

- [User Manual](#)