

TKH
TKH FD2026M IP
Fixed Dome
Camera



TKH FD2026M IP Fixed Dome Camera User Guide

[Home](#) » [TKH](#) » TKH FD2026M IP Fixed Dome Camera User Guide 

Contents

- [1 TKH FD2026M IP Fixed Dome Camera](#)
- [2 Product Usage Instructions](#)
- [3 Unpack](#)
- [4 Installation Notices](#)
- [5 Connectors](#)
- [6 Connector Definition](#)
- [7 Camera Cabling](#)
- [8 Waterproof Notice](#)
- [9 Accessing the Camera – DHCP](#)
- [10 Auto detect with SDM2](#)
- [11 1st time camera login](#)
- [12 Browser-based Viewer](#)
- [13 Documents / Resources](#)
 - [13.1 References](#)
- [14 Related Posts](#)



TKH FD2026M IP Fixed Dome Camera



Specifications

- Model: FD2026M
- Resolution: 6MP
- Type: IP Fixed dome camera
- Zoom: 5x motor zoom
- Power: DC 12V

Product Usage Instructions

Unpacking

1. Remove the Camera Unit, Mounting Plate, Duster, CAT-6 RJ45 conduit & Pin pusher, Screws, and Plastic Screw Anchors from the packaging.

Connector Definitions

1. Alarm I/O: Used for Alarm I/O connection.
2. Audio I/O: Line In and Line Out connection.
3. RJ-45 Port: For network and PoE connections. Contact Siquira for a compatible PoE injector.
4. Power(DC 12V): Power Connection.
5. Reset Button: Press and hold for at least 10 seconds to restore the camera to factory defaults.
6. Micro SD Card Slot: Insert an SD card to store videos and snapshots. Do not remove the SD card when the camera is powered on.

Installation Notices

Installation should be carried out by qualified personnel following local procedures. The camera contains batteries; do not attempt battery replacement due to the risk of explosion. Use only with UL listed I.T.E. with PoE output for PoE connection.

Camera Cabling

Ensure proper alignment of the rubber during installation for waterproofing.

Accessing the Camera – DHCP

1. Connect the camera to the network switch and access the camera's IP address via DHCP.
2. Upon first-time camera login, set a strong password for security.
3. For browser-based viewer access, use the provided credentials.

Micro SD Card Usage

Avoid continuous recording with the micro SD card 24/7 as it may affect long-term data reliability. Contact the manufacturer of the micro-SD card for more information on reliability and life expectancy.

FAQ

Q: Where can I find additional manuals and firmware for the product?

A: You can find additional manuals, datasheets, EU Declaration of Conformity, and the latest firmware for this product at tkhsecurity.com.

Unpack



Camera Unit



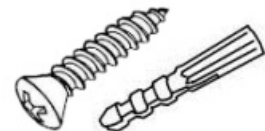
Mounting Plate



Duster



CAT-6 RJ45 conduit
& Pin pusher



Screws(4x) &
Plastic Screw
Anchors (4x)



Conduit



Security Torx



Quick Start Guide

Subject to modification. Actual product and accessories may differ in appearance.

Installation Notices

- Caution installation shall be performed by qualified personnel only. Installation shall be in accordance with local procedures. The camera contains batteries.
- Battery replacement shall not be applied in view of the risk of explosion. Dispose of used batteries according to the instructions.
- For “PoE” input connection, use only with UL listed I.T.E. with “PoE” output. Description for the “PoE” is intended to be connected to not exposed (outside plant) networks or equivalent statement in installation instructions.

Connectors

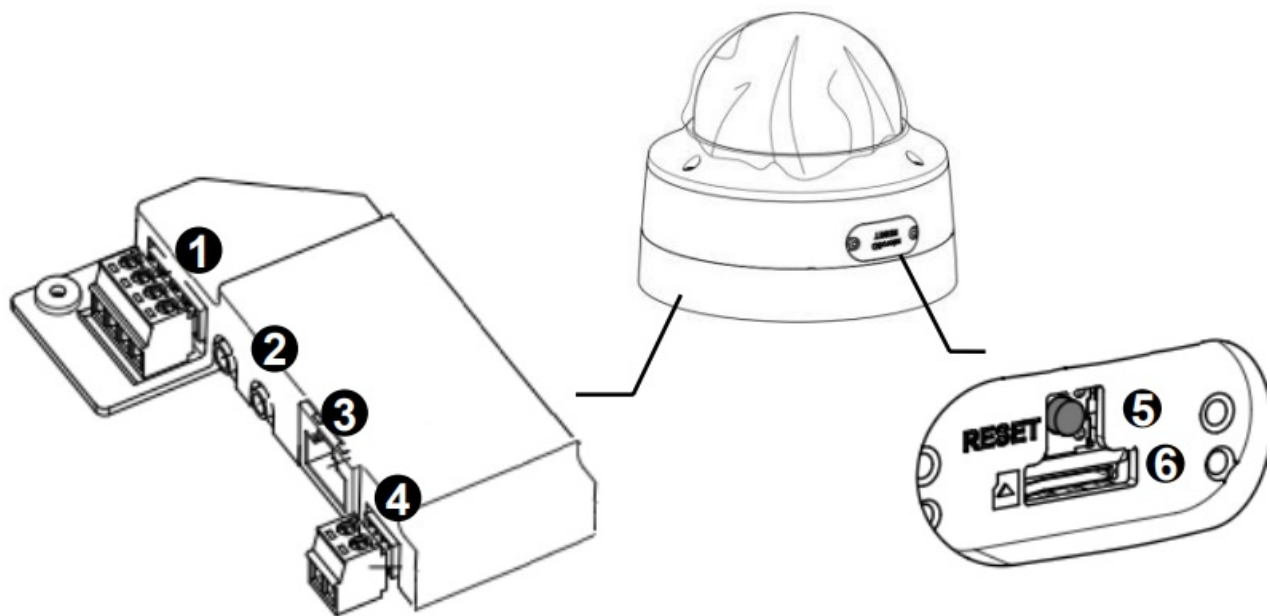


Figure 1 Camera Connectors

To restore camera to factory defaults, power up with Reset button pressed for at least 10s.

Connector Definition

No.	Connector	Definition
1	Alarm I/O	Alarm I/O connection
2	Audio I/O	Line In and Line Out connection
3	RJ-45 Port (Contact Siquira for a compatible PoE injector.)	For network and PoE connections
4	Power(DC 12V)	Power Connection
5	Reset Button	To restore camera to factory defaults, power up with Reset button pressed for at least 10s.
6	Micro SD Card Slot	Insert the SD card into the card slot to store videos and snapshots. Do not remove the SD card when the camera is powered on.

Camera Cabling

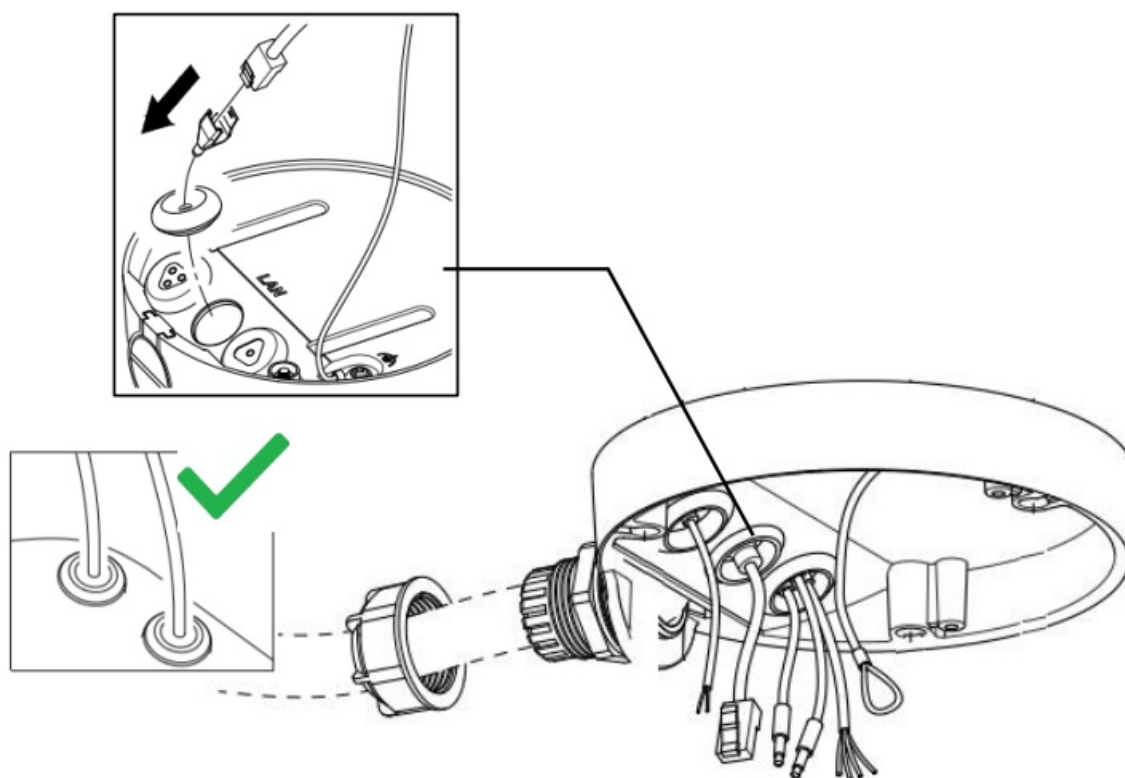
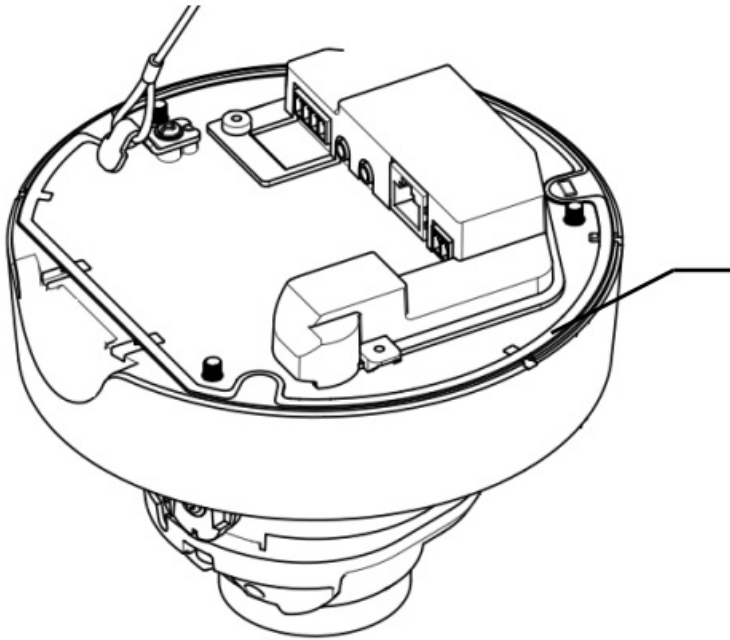


Figure 2 Cabling

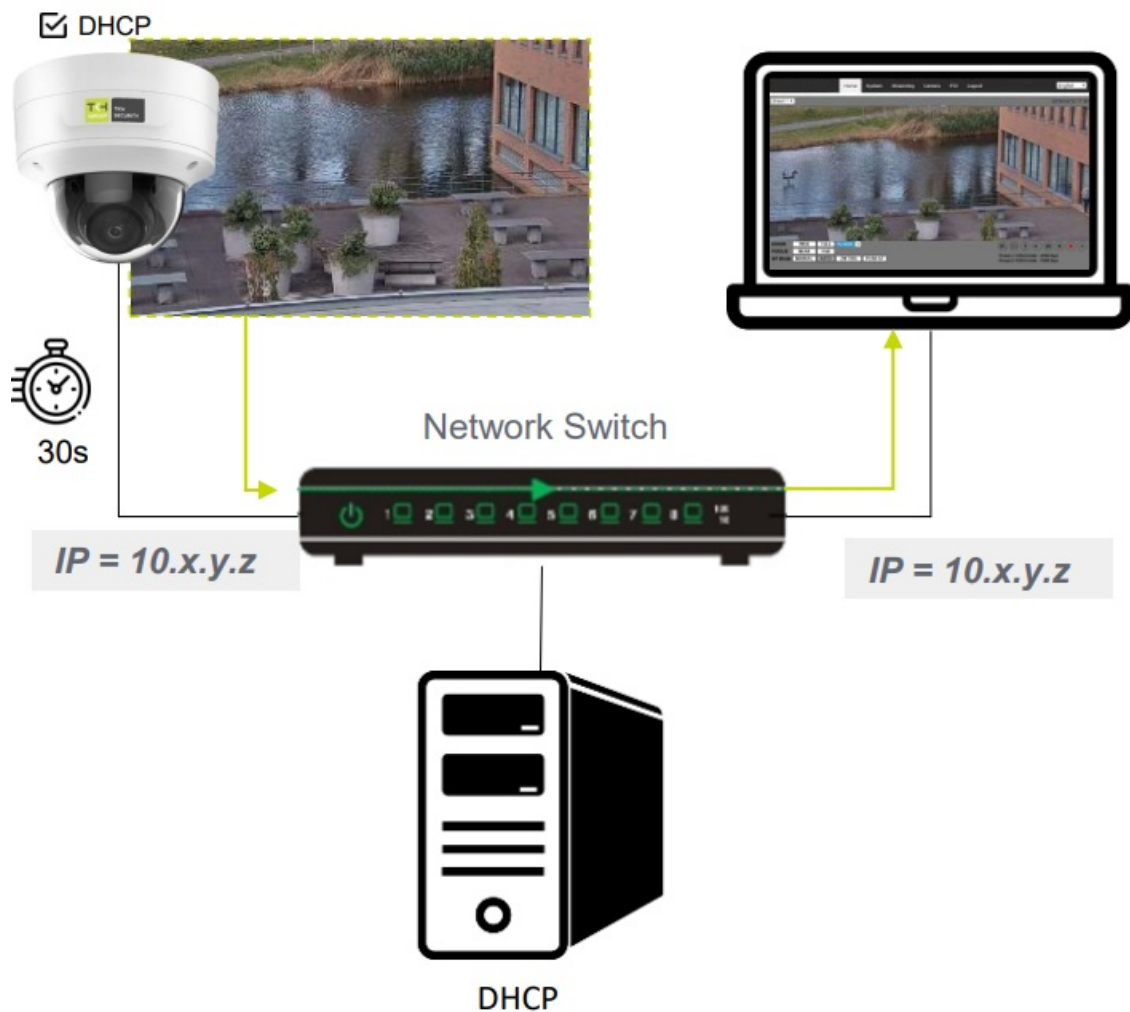
Waterproof Notice



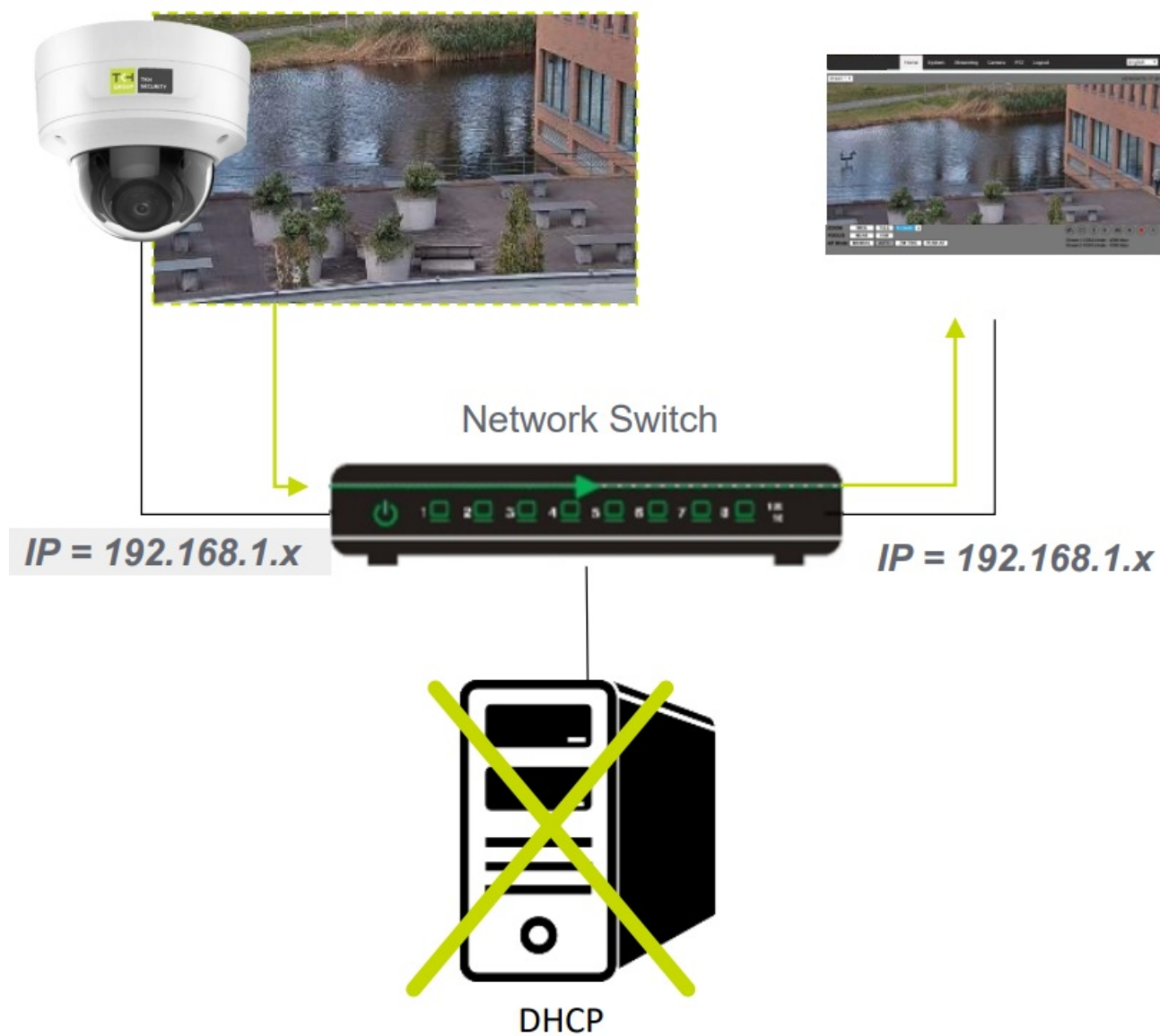
Please make sure the rubber is properly aligned during installation.

Figure 3 Rubber

Accessing the Camera – DHCP

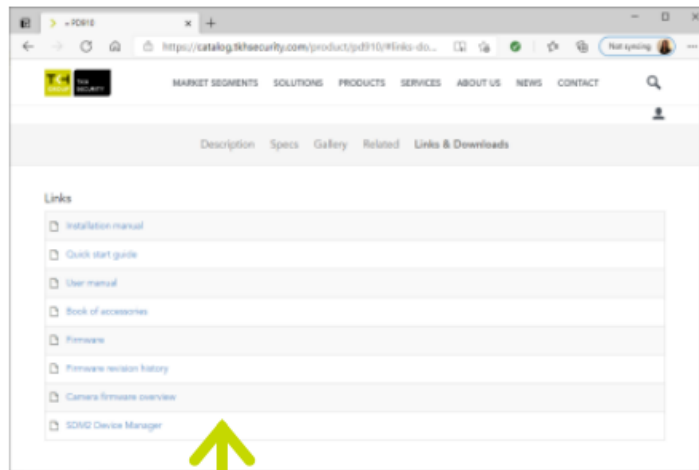


Accessing the camera – Fixed IP



Auto detect with SDM2

1



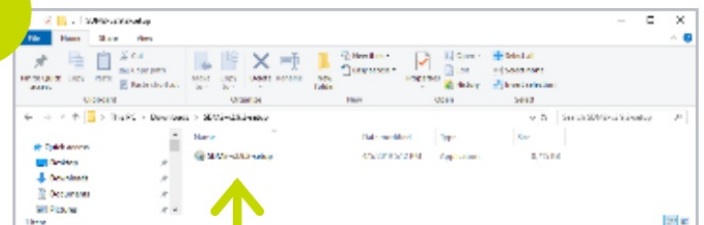
Tkhsecurity.com



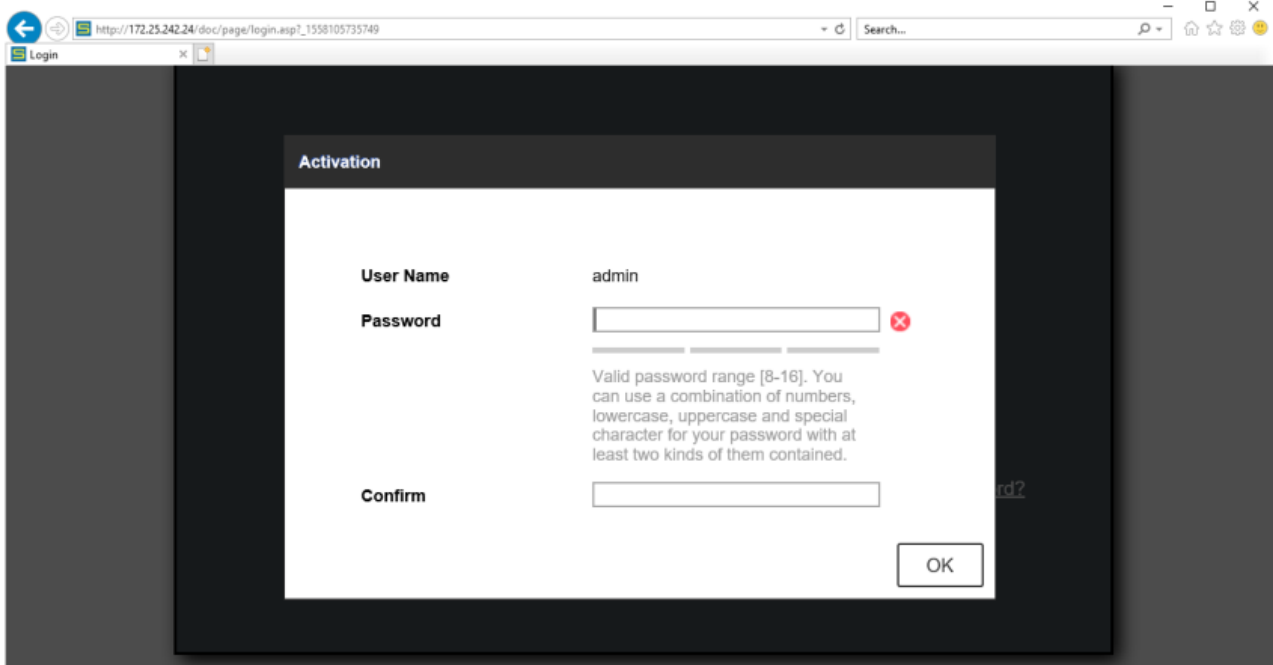
2



3



1st time camera login



qwer1234 ❌

x6W@oM0a!9#F ✅

1st time camera login

TKH GROUP TKH SECURITY

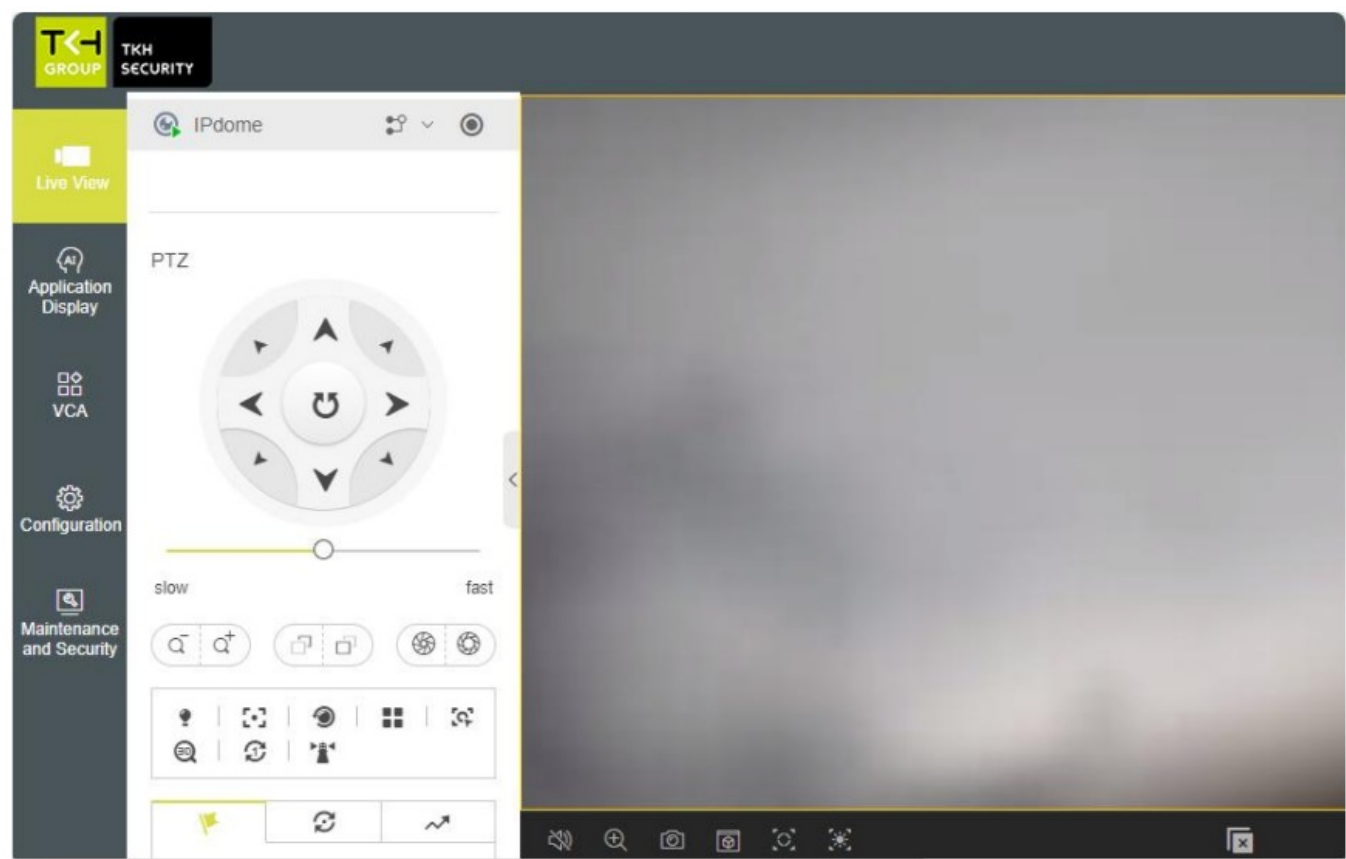
User Name

Password

Language

[Forgot password?](#)

Browser-based Viewer



It is not recommended to continuously (24/7) record with the micro-SD card, as the camera may not support long-term continuous data read/write. Contact the manufacturer of the micro-SD card for information regarding the reliability and the life expectancy.



© TKH Security B.V. 2024 | Version 2 (20241209) | FD2026M-QS-EN

Documents / Resources

	<p>TKH FD2026M IP Fixed Dome Camera [pdf] User Guide FD2026M IP Fixed Dome Camera, FD2026M IP, Fixed Dome Camera, Dome Camera, Camera</p>
--	---

References

- [> TKH Security - Home – TKH Security](#)
- [User Manual](#)

[Manuals+](#), [Privacy Policy](#)

This website is an independent publication and is neither affiliated with nor endorsed by any of the trademark owners. The "Bluetooth®" word mark and logos are registered trademarks owned by Bluetooth SIG, Inc. The "Wi-Fi®" word mark and logos are registered trademarks owned by the Wi-Fi Alliance. Any use of these marks on this website does not imply any affiliation with or endorsement.