



TKH BL2005v2M 5MP Vandal Bullet Camera User Guide

[Home](#) » [TKH](#) » TKH BL2005v2M 5MP Vandal Bullet Camera User Guide 



BL2005v2M
5MP Vandal Bullet Camera
Quick Start Guide



Find additional manuals, the datasheet, the EU Declaration of Conformity, and the latest firmware for this product at: tkhsecurity.com



<http://tkhsecurity.com>

Contents

- 1 Unpack
- 2 Installation Notices
- 3 Connectors
- 4 Connector Definition
- 5 Camera Cabling
- 6 Waterproof Notice
- 7 Accessing the Camera – DHCP
- 8 Accessing the camera – Fixed IP
- 9 Auto-detect with SDM2
- 10 1 st time camera login
- 11 Browser-based Viewer
- 12 Documents / Resources
 - 12.1 References
- 13 Related Posts

Unpack



Subject to modification. Actual products and accessories may differ in appearance.

Installation Notices



CAUTION INSTALLATION SHALL BE PERFORMED BY QUALIFIED PERSONNEL ONLY. INSTALLATION SHALL BE IN ACCORDANCE WITH LOCAL PROCEDURES. THE CAMERA CONTAINS BATTERIES. DO NOT REPLACE IN RISK OF EXPLOSION.

BATTERY REPLACEMENT SHALL NOT BE APPLIED IN VIEW OF THE RISK OF EXPLOSION. LE REMPLACEMENT DES PILES NE DOIT PAS ÊTRE APPLIQUÉ AU RISQUE D'EXPLOSION. DISPOSE OF USED BATTERIES ACCORDING TO THE INSTRUCTIONS. METTRE AU REBUT LES BATTERIES

FOR “PoE” INPUT CONNECTION, USE ONLY WITH UL LISTED I.T.E WITH “PoE” OUTPUT. DESCRIPTION FOR THE “PoE” IS INTENDED TO BE CONNECTED TO NOT EXPOSED (OUTSIDE PLANT) NETWORKS OR EQUIVALENT STATEMENT IN INSTALLAION INSTRUCTIONS

Connectors

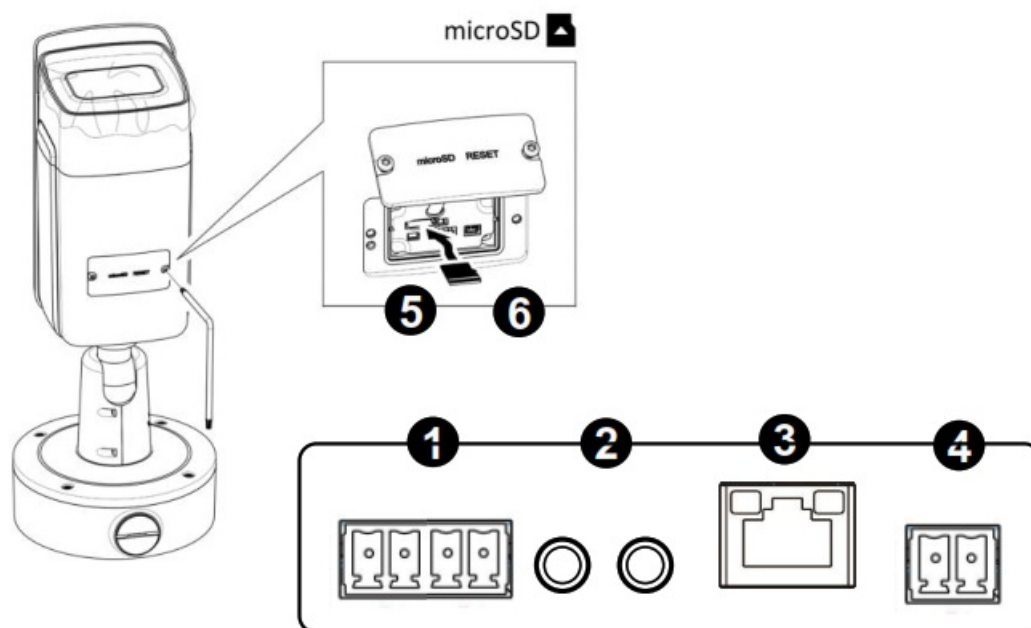


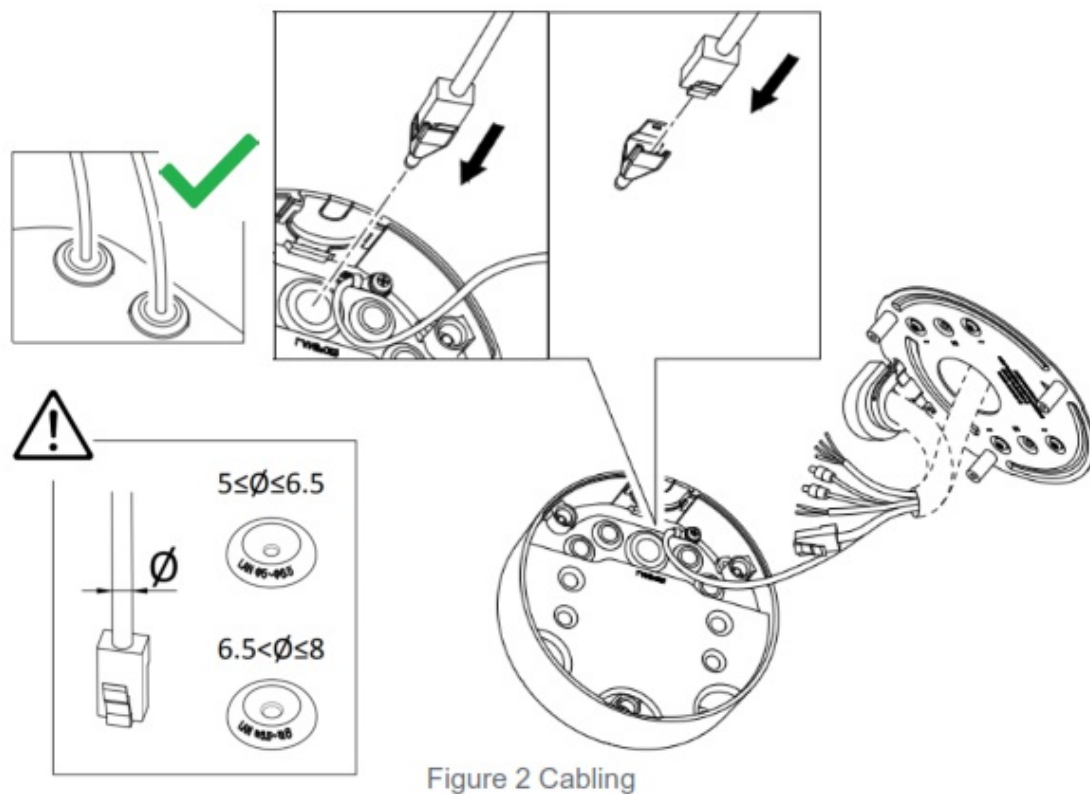
Figure 1 Camera Connectors

Connector Definition

NO.	Connector	Definition
1	Alarm I/O	Alarm I/O connection
2	Audio I/O	Line In and Line Out connection
3	RJ-45 Port	For network and PoE connections. Please contact Siqua for a compatible PoE injector.
4	Power(DC 12V)	Power Connection
5	Micro SD Card Slot	Insert the SD card into the card slot to store videos and snapshots. Do not remove the SD card when the camera is powered on.
6	Reset Button	Press the button with a proper tool for at least 20 seconds to restore the system.

Table 1 Connector definition

Camera Cabling



Waterproof Notice

A bullet camera is suggested to be mounted either by wall/pole mount or ceiling mount. Other mounting may cause potential water leakage at the camera, which is not covered in the warranty.

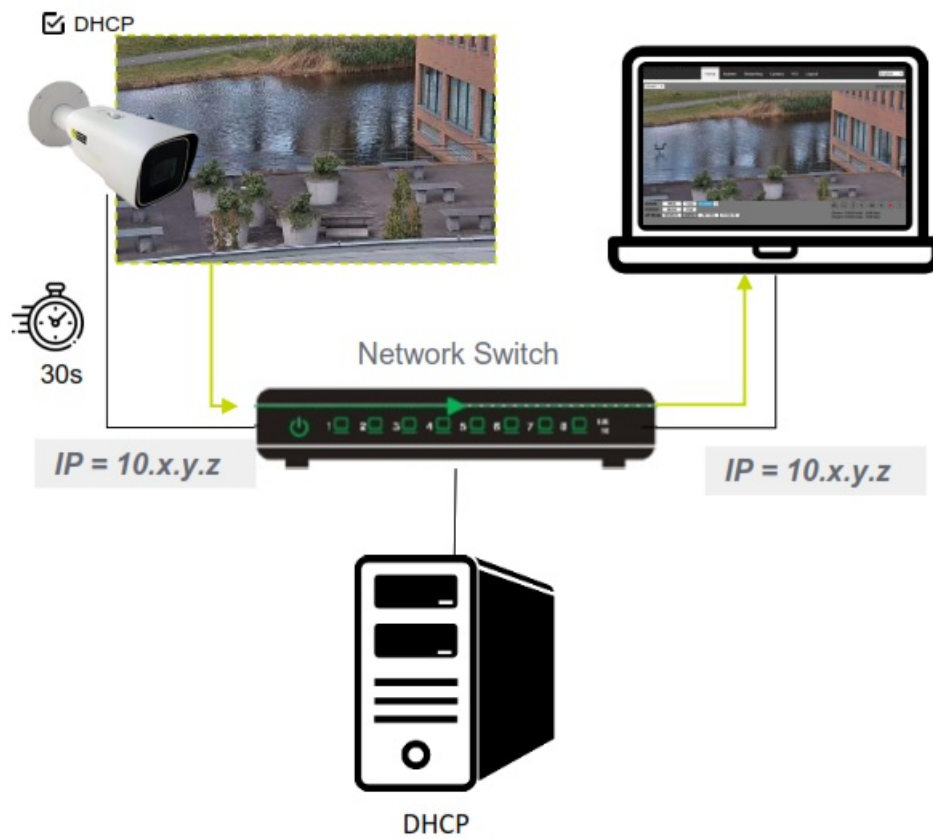


Figure 3 Wall/Pole Mount

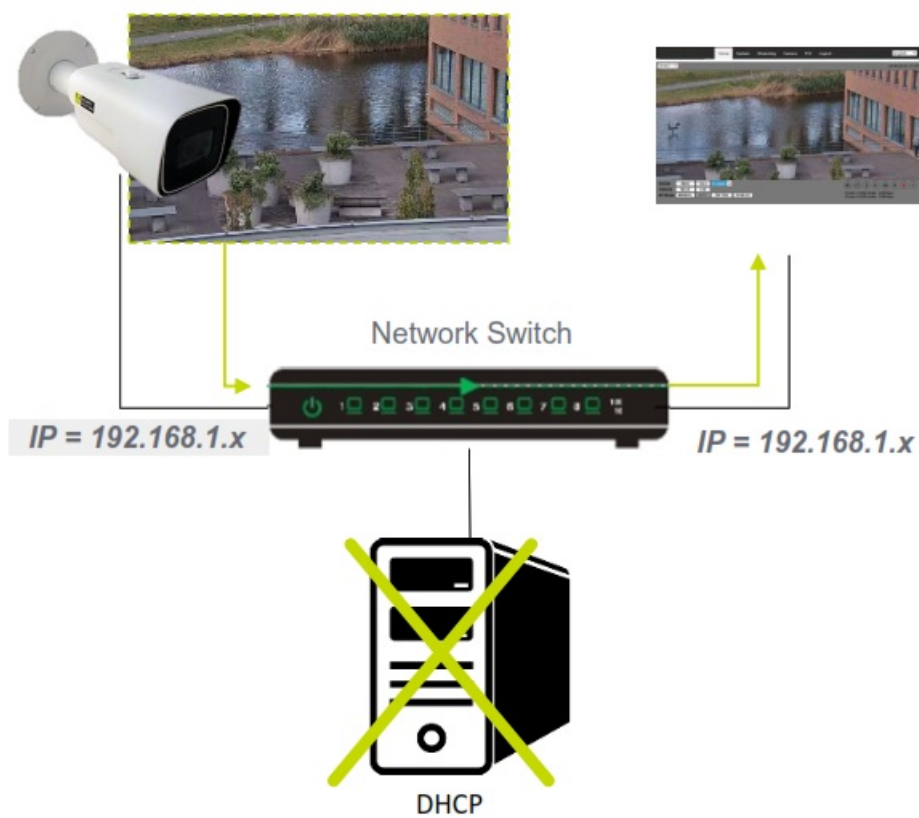


Figure 4 Ceiling Mount

Accessing the Camera – DHCP



Accessing the camera – Fixed IP



Auto-detect with SDM2



<http://tkhsecurity.com>

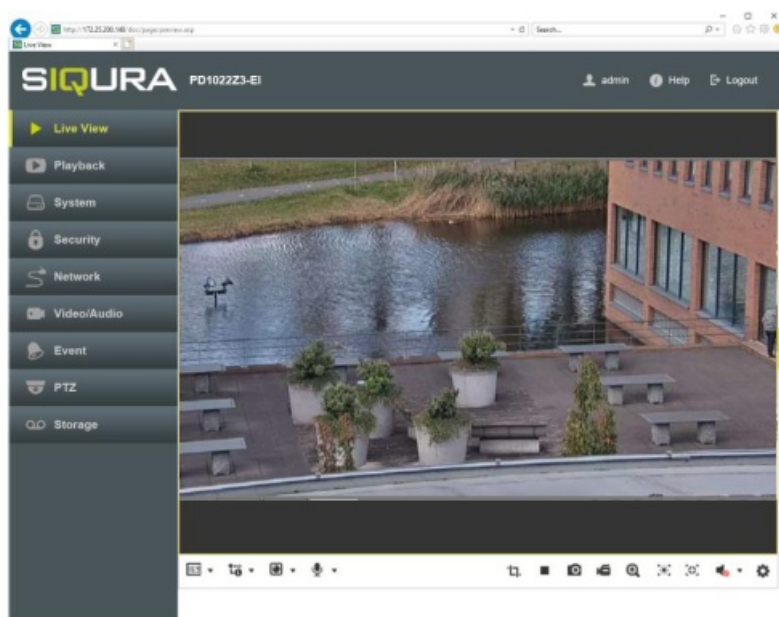
1 st time camera login

Set a strong password

qwer1234 ❌

x6W@oM0a!9#F ✅

Browser-based Viewer



IT IS NOT RECOMMENDED TO CONTINUOUSLY (24/7) RECORD WITH THE MICRO SD CARD, AS THE CAMERA MAY NOT SUPPORT LONG-TERM CONTINUOUS DATA READ/WRITE. CONTACT THE MANUFACTURER OF THE MICRO SD CARD FOR INFORMATION REGARDING THE RELIABILITY AND THE LIFE EXPECTANCY.

© TKH Security B.V.
2021 | Vision 1 (20211123) | BL2005v2M QSG

Documents / Resources



[TKH BL2005v2M 5MP Vandal Bullet Camera](#) [pdf] User Guide
BL2005v2M 5MP Vandal Bullet Camera, BL2005v2M, 5MP Vandal Bullet Camera

References

- [TKH Security](#)